

DATES TO REMEMBER - 2015

January 10-17

- PA Farm Show

January 21-24

- 103rd Annual Convention—Hershey

February 15

- Baking Contests intent to participate due

February 28

- Queen Competition intent to participate

- FAIRTALK material for March issue due

March 25 (week of)

- 1st Quarter FAIRTALK emailed

April 16

- PSACF Board Meeting

April 22

- PSACF Zone 4 Mtg. - Shady Maple

April 23

- PSACF Zone 3 Mtg. - Fayette County Fair

April 24

- PSACF Zone 1 Mtg. - Scrubgrass Grange

April 25

- PSACF Zone 2 Mtg. - Lycoming County Fair

May 14-16

- IAFE Zone 1 meeting Buffalo NY

May 31

FAIRTALK material for June due

June 24 (week of)

- 2nd Quarter FAIRTALK emailed

August 31

- Baking Contest checks (PA Preferred, Angel Food)

- FAIRTALK material for Sept issue due

September 1

- Showcase apps. For 2016 Convention mailed

September 24 (week of)

- 3rd Quarter FAIRTALK emailed

September 30

- Zone Junior Fair Person nominations due to Zones

October 15

- Showcase apps. Due

- 2016 Request for Fair info material, PSACF Associate Dues Invoices, PSACF/PSSA Convention material, Trade Show apps. mailed.

October 15

- PSACF Board Meeting

October 21

- PSACF Zone 4 Mtg. - Shady Maple

October 22

- PSACF Zone 3 Mtg. - Huntingdon County Fair

October 23

- PSACF Zone 1 Mtg. - Scrubgrass Grange

October 24

- PSACF Zone 2 Mtg. - Schuylkill County Fair

November 1

- Fair Person Of the Year apps. Due

- Communications Competition apps due

- Queen Competition Applications due

November 15

- Reimbursement apps.—Fair Fund due

- Baking Contests Summaries due

November 20

FAIRTALK material for December issue due

November 29—December 3

- IAFE Convention - Las Vegas

FAIRTALK



"News From The PA State Association of County Fairs"
"THE VOICE OF THE PENNSYLVANIA FAIR INDUSTRY"

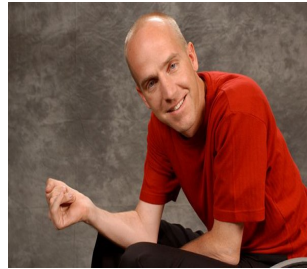
VOL. 28

December 2014

NO.4

CHAD HYMAS TO DELIVER OUR KEYNOTE ADDRESS AT THE 2015 CONVENTION

Kevin D. Bieber



Chad Hymas, a well-known motivational speaker will be at Hershey addressing us for the opening of the 2015 convention. Chad has an incredible resume and has travelled all over the world presenting too many organizations and companies. Chad has also presented at the annual IAFE convention a couple of years ago. Chad not only has the chal-

lenges of a busy travel schedule, but also faces a handicap that he will tell you more about.

The seminar committee has been working very hard once again to bring a full slate of professional and educational seminars to you while in Hershey. We all certainly hope you will consider taking the time to come to the convention and partake of the many seminar opportunities that we have prepared to give you.

Marla Calico and Jayme Buttke will be in Hershey to present the Consumer Protection Class on Wednesday of convention week, they have agreed to stay an extra day or two in order to share their expertise in some seminar formats. Marla will present a seminar titled 60 tips in 60 minutes, I have been assured although this will be a fast paced seminar, you will come away with lots of new things to think about. Jayme will follow up that seminar on "Leadership".

Friday will continue to be a fun filled, educational day as we welcome Barney Cosner back to Hershey. Yes, Barney loved it here so much last year and from what many of you told me, you loved him, I invited Barney back. Barney will present two seminars throughout our convention. Bob Johnson who is the OABA Exec. Director will be presenting a seminar on this day also. Bob is presenting a seminar titled "Put Your Carnival Cards on the Table". For those of you waiting to hear the latest on the Special Baking Contest, Karen and Kevin will be there to give you all the information you will need to prepare for the 2015 fair season.

Saturday will bring high energy as we welcome back Barney Cosner and a very special guest in a previous Fair Queen Casey Hall. I have asked Casey to present a seminar that she recently presented at the IAFE Zone Meeting. She was enjoyed by all and I promise you will enjoy her too. Finally for Saturday I am working on bringing back the folks from Harrisburg to talk about Food Safety Updates.

See "Chad" — Next Page

PSACF OFFICERS - 2014-2015

President

John D. Blaney, Jr.
247 Curfew Rd.
Perryopolis, PA 15473
(724) 677-2228

Exec. Secretary/Treasurer

Harry Reffner
128 Cumberland Drive
Bedford, PA 15522
(866) 814-6985

Vice President

David Reese, DVM
10 Dry Run Rd. - Left Branch
Pine City, NY 14871
(607) 733-3154

Immediate Past President

Ron Miller
612 Skyline Dr.
Bernville, PA 19506
(484) 955-8574

PSACF DIRECTORS - 2014-2015

C. Sherman Allen
903 Diamond Square
Meadville, PA 16335
(814) 382-2922

Judy Kmetz
367 Smith Pond Rd.
Shavertown, PA 18708
(570) 675-2952

John Berne
PO Box 141
Crosby, PA 16724
(814) 887-5396

Craig Lash
246 Dairy Ln
West Newton, PA 15089
(724) 872-8967

Kevin D Bieber
PO Box 105 613 Main St.
Oley, PA 19547
(610) 987-6529

John McMullen
363 E. Phila. St. (Box 175)
Armagh, PA 15920
(814) 446-6692

Luke E Bruckhart
1063 Shelly Rd
Manheim, PA 17545
(717) 665-5198

Jeanne Miller
299 Riley Dr.
Girard, PA 16417
(814) 774-5703

Jim H Davis
6176 Shavers Creek Rd
Petersburg, PA 16669
(814) 669-4268

Dr. Sally K Nolt
25 Iris Circle
Elizabethtown, PA 17022
(717) 367-7256

Roger Dirlam
250 Sunrise Ave.
Honesdale, PA 18431
(570) 253-3540

Rodman R. Ralston
7015 Old Berwick Rd.
Bloomsburg, PA 17815
(570) 759-0406

Karen Dobson
9 Ebelhare Rd
Pottstown, PA 19465
(610) 469-0263

Bill Ritzman
42 N. Market St.
Millerstown, PA 17062
(717) 589-9997

Martha Ebersole
640 Dellville Rd.
Duncannon, PA 17020
(717) 834-4435

Debbie Stephenson
667 Washington Road
Prosperity, PA 15329
(724) 627-4752

Susan Hahn
1424 Church Rd.
Pen Argyl, PA 18072
(610) 863-6816

George Witherite
150 Mountain View Ln.
Spring Mills, PA 16875
(814) 387-4916

David Hallstrom
482 East 8th St
Clearfield, PA 16830
(814) 765-8366

Samuel J Zaffuto
355 N Park St.
Sykesville, PA 15865
(814) 894-5723

Dick Horstman
5 S. Kings Creek Rd.
Burgettstown, PA 15021
(724) 729-3701

MEMBERS AT LARGE

Milliron Associates
Andrew Goodman
Government Relations
200 N. Third Street
Harrisburg, PA 17101
(717) 232-5322

Galla Higinbotham
5075 Wrenwood Ln
Alexandria, PA 16611
(814) 669-4443

Boots Hetherington, Admin.
PA Agricultural Fair Program
PA Farm Show Complex
2300 N. Cameron St.
Harrisburg, PA 17110
(717) 787-6257

FAIRTALK published four times per year by the Association. Send information for the publication to:
Harry Reffner
128 Cumberland Rd,
Bedford, PA 15522

From "Chad" — previous page

As I am sure you will agree, we have a full slate of high energy people just waiting to share ideas, thoughts and educate all of us in this great industry we call PA FAIRS. All we need is you to be in Hershey from January 21st to through the 24th.

JUDGES SCHOOL SCHEDULED

On Wednesday, January 21, 2015 the Pennsylvania State Association of County Fairs and the Pennsylvania Farm Show will host a Judge's School during the Pennsylvania State Association of County Fairs Convention at the Hershey Lodge and Convention Center. You may choose two sessions to attend.

The day starts at 12:30 PM with an orientation session on ethics in the judging process. This is followed by the six sessions.

Session choices for this year are as follows. Presenters will be announced.

- Baked Goods
- Clothing, Needlecraft, Quilting
- Vegetables
- Nuts
- Flowers
- Christmas Trees

The first session is from 1:20 - 2:30 PM and the second is from 2:35 - 3:55 PM.

The fee for the school is \$10.00 per person.

At the conclusion of the sessions a certificate of attendance is given to all participants who complete the program.

By mid-February the "PSACF Suggested Judges List" is compiled and goes online on the Fair Association website, www.pafairs.org. Many fairs have found it very helpful in finding qualified judges.

If you are planning to participate in Judges School, you need to pre-register by January 15, 2015. Send your name, address, phone number and e-mail to Beverly Gruber, P.O. Box 5, New Tripoli, PA 18066. If you prefer, registration may be called in. Phone 610-767-5026 or email lowhill@rcn.com or b.gruber@rcn.com.

See registration next page

Judge's School Registration

Name _____

Address _____

City, State, Zip _____

Phone _____ Email _____

Number of People _____ @ \$10.00 = \$ _____

Return form and check payable to Beverly Gruber • P. O. Box 5 • New Tripoli, PA 18066

Registration may be called in. Phone 610-767-5026. Please register by January 15, 2015.

FAMILY FEUD IS BACK AT CONVENTION SIGN UP NOW !!!!

BY: KEVIN D. BIEBER

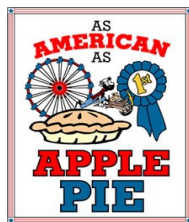
What would the PSACF and PSSA convention be without a little fun amongst our fair families? Well, to satisfy that "fun" part, we are bringing back Family Feud on Saturday afternoon. Last year presented lots of laughing, stiff competition and yes, silly answers. However it was all in fun. The Huntingdon County Fair took the championship last year, who is going to try to be the champion this year?

I was amazed at how many fairs wanted to participate last year, so this year I am asking for you to sign up ahead of time. Unfortunately due to time on Saturday afternoon, we have to limit the game to 4 teams of 5 people. If more than 4

teams sign up, we will hold a drawing to see which 4 fairs will be on stage this year.

How do you sign up? It is easy, please e-mail me at kevin.bieber@nationalpenn.com or call my cell at 484-256-8009 and I will put you on the list. Make sure you have 5 willing players from your fair who will participate. If I have more than 4 fairs that would like to participate, the PSACF Board will hold a drawing to see who will be on the Feud !!!!!

**SURVEY SAYS See you at
Hershey !!!!!!!!!!!!!!!!!!!!!!!**



2014 SPECIAL BAKING CONTESTS

Our home mailboxes were a flurry of activity these past few weeks as Fairs sent in the Special Baking Contest Summary reports for their 2014 Angel Food Cake, Blue Ribbon Apple and PA Preferred Chocolate contests! Any sponsored premium money not awarded must be returned to the PSACF Office. Include a description of which placings are being returned (*ex: 3rd place, PA Preferred Cookies, Brownies, Bars*). We will be invoicing the fairs that have not yet returned unused premiums or did not submit a contest report.

Soon your local baking winners will be heading to Harrisburg to compete in the State finals at the PA Farm Show. They will receive a post card (*before Christmas*) with instructions on when, where and how to participate in the Farm Show finals in January. Our goal is to show our sponsors how much these contests mean to our fair exhibitors by having a great turnout at Farm Show! So remember that if your fair's first-place winner cannot attend, you can certify your next place winner.

Frequently Asked Questions we get from the contestants about the PA Farm Show competition . . .

1. ***"I don't have my Winner Certification paper! Where do I get one?"*** The Fairs must give their certified winner the signed form. That is their "ticket" to enter at Farm Show. Carbonless duplicate forms were included in the Fairs' contest packets in April. Forms are also available on PSACF's website under the "Contests" section of the "Member Fairs Only" webpage.
2. ***"My Fair only gave me one (1) signed Certificate Form! What do I do now?"*** We need an original and 1 copy when the contestant enters at Farm Show. Most likely the Fair printed the single page form from the PSACF website. The winner can just make a photocopy of the signed Certificate.
3. ***"Do I need to fill out an entry form or enter my cake/pie/cookies online through the PA Farm Show's website?"*** No. All Special Baking contests co-sponsored by PSACF are strictly handled through Kevin and Karen. As long as the contestants have their signed Winner Certification, their baked entry and any other required items listed in the contest rules, they are good to go. No other entry paperwork is needed. Please do not call the PA Farm Show office as they will not be able to assist with information about these contests.
4. ***"I really want to enter at Farm Show, but I can't get there. Can someone else bring my entry?"*** Yes. As long as your helper has the original signed Winner Certification Form, the baked entry and all other required items per the contest rules, they can enter the contestant's item.
"Do you have to present at the time of award to get your ribbon/cash prize?" No. While we certainly encourage contestants to stick around for the live judging, it is not required. We will contact any absent winners and their fairs after the contest.

To learn more about how to run a successful baking contest at your 2015 Fair, come to the Special Baking Contest Seminar at Convention on Friday, January 23. We will review any rule updates, give tips and ideas, and address any issues/concerns. In the meantime, feel free to contact the appropriate committee chairpersons with any questions:

Angel Food Cake and Apple Pie

Kevin Bieber (484-256-8009, email kdbieber@natpennbank.com)

PA Preferred Chocolate Cake and Chocolate Cookie, Brownie, Bar

Karen Dobson (610-212-6180, email kardob@msn.com).



ASSOCIATE MEMBERS REPORT

-Galla
Higginbotham

During the busy holiday season, getting ready for the January 2015 PSACF/PSSA convention is also on the "to do" list. I welcome new associates and hope to meet you in person in Hershey.

Consider, if you have not already done so, reserving a booth in the Trade Show. The deadline for sending in the paperwork is December 15th. The buffet lunch that was in the back of the trade show has been eliminated due to the exhibitors needing more room. If you miss the deadline and wish to have a booth, contact Dick Horstman (724-729-3701). He should be able to find you a space since there will be more room this year.

Trade Show participants who have booths will be given menus each day with the option to order food that will be delivered to your booth.

Thank you to W. A. DeHart for generously providing coffee once again.

The Wednesday evening Entertainment Showcase has a great line-up this year, with much diversity and talent.

We fair associates invite everyone – especially those who are attending for the first time – to visit the Trade Show! And plan to spend some time there!

Pennsylvania has one of the premier trade shows in the country. There will be well over 150 booths – all in one room! Among the many acts and attractions, booking agents, musical attrac-

tions, thrill and stunt shows, equipment companies, sound & light companies, carnivals, fair supply and insurance companies, rodeos, fireworks, food concession suppliers, special services and printers, there is indeed something for every fair and for every budget – small, medium and large.

We invite all fair buyers to come and see everything we have to offer to make your fair a success.

Be sure to play the "Sticker Game" sponsored by the state fair board. Attendees are encouraged to collect a certain amount of stickers throughout the Trade Show which then makes them eligible on Saturday afternoon for some great prizes.

The Trade Show is open Thursday and Friday 10:30 – 4:00 and 9:00 – 12:00 on Saturday.

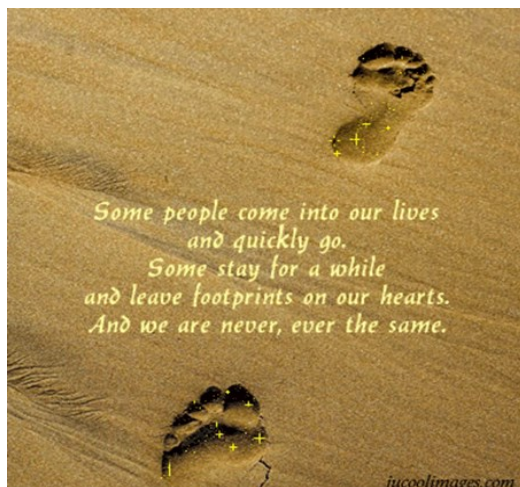
Note to associates: our meeting will be on Thursday at 4:00 - right after the trade show closes. In prior years we met in the back area of the trade show. If that is not possible with the new layout I will advise you where this will take place.

**Fill all your fair needs and
SUPPORT YOUR ASSOCIATES
VISIT**

The Trade Show
**Your #1 source for fair industry
Goods, services and entertainment!**

I look forward to seeing everyone at the 2015 convention! Merry Christmas and Happy New Year!

Galla dangalla@uplink.net



Memorial Table at Convention

Once again the Trade Show will have a Memorial Table for remembering our dearly departed fair friends.

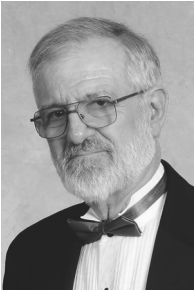
If your Fair grieved the loss fair volunteers, directors or staff persons this year, we encourage you to honor their memory by bringing photos of them to place on the Memorial Table.

Photos should be framed, and should include an attached note with the following information:

Deceased's name
Home Fair
Position or Title

For questions about the Memorial Table, contact John Berne at 814-887-5396.

Thank you for making the Memorial Table a true tribute to these dedicated men and women who left behind a legacy for our fairs!



FROM THE PRESIDENT

As I write this last article for the newsletter, I find it hard to believe that two years have gone by so quickly! It has indeed been a pleasure to serve as your President. I am truly grateful to our past president Ron Miller and Dave Mallard for allowing me to work with them to get fair funding restored to its' full level. I am also pleased that the legislative consultants at Milliron and Goodman, LLC have been a good investment for our organization.

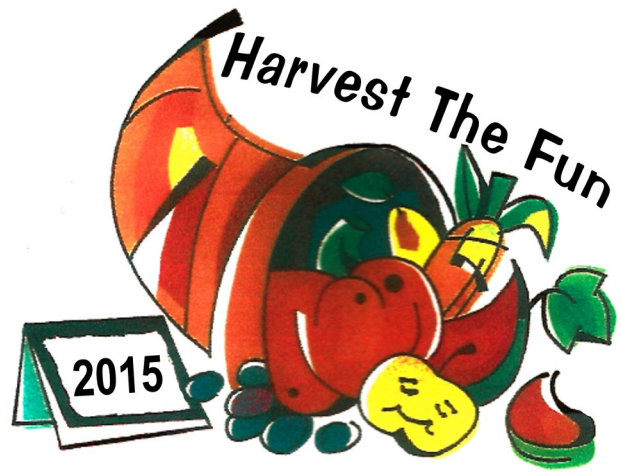
My wife and I have truly enjoyed meeting so many wonderful 'fair' people as we traveled the state to over 100 fairs while I served as vice president and president. It has been encouraging to see how creative all of you can be to tell the story of agriculture. I am so proud of how differently and uniquely each of you meet the bottom line to qualify for state reimbursement. As your Past President, I intend to keep visiting fairs and experience the new ideas...

Remember to come to the convention to share your great ideas and pick up a few new ones at our great line up of seminars and table topics. Also if no one from your fair has attended the Consumer Protection Program (ecoli school), this is the last time it will be offered at the PA convention, so sign up today! This workshop can be a good investment for your fair in the off-chance of an outbreak at your fair.

Now that elections are over, introduce yourself and invite your new representatives and sen-

ators to your fair and please make sure that each new and previous person has a copy of the Economic Impact Study. Also remember to give one to your local government reps also. (ie. Twp. Supervisors, Mayor, Councilmen, etc.) Additional copies can be obtained from your Secretary/Treasurer, Harry Reffner.

I really believe that education of agriculture can best be shared in the fun environment of each of our unique fairs. So the theme for the 2015 fairs will be: "Harvest the Fun". Artwork will be available or you may use your own.



My wife, Hazel and I wish each of you a Merry Christmas and a Happy New Year and great weather for your 2015 Fair!

John

We Offer An Award You Can Be Proud Of....
Plus A Full Line of Fair Supplies & Specialty Advertising

Regalia
 MFG. CO.
1-800-798-7471

Quality You Trust.....Service You Depend On

e-mail cindy@regaliamfg.com *www.regaliamfg.com*



Convention Photography

"What I like about photographs is that they capture a moment that's gone forever, impossible to reproduce." Karl Lagerfeld



The 2015 will be full of fun times and memorable events. PSACF welcomes back Tim McGowan Studio and Associates as they return to Hershey to capture those moments. Their professional photographers will be available throughout the Convention to anyone who wants a photo taken. This includes photos of your fair committee, family, fair organization and local fair queen – candid shots or formal portraits. There is no charge to have the photos taken, only if you wish to purchase any. The photographers will be set up for formal portraits at the south end of the hallway, just outside the Great

American Hall in the Lodge. They will also be present at the scheduled convention events. You can order photos at the Convention, or choose to view them later on the web at

www.PSACF15.photoherald.com;
Passcode = **2015**



Tim McGowan Studio and Pro Media Concepts, LLC is available to photograph your fair and events, weddings, senior portraits, aerial photography of your farm or fair, and fundraising with photos. Contact their studio at 717-866-9094, cell number 717-228-5357, email tmstudio@comcast.net or stop and speak to them at Convention. You can also visit their website at www.timmcgowanstudio.com.



TABLE TOPICS

BY: DEBBIE STEPHENSON

Hello to all as we are gearing up for another convention. As you will notice the committee has put the table topics online for you to choose what topic suits your fair needs when you get to convention. If you see a topic that you would like to chair for us please let me know. This entails being the lead person in getting people to speak about what

their fair does and gives idea's to other fairs for them to take home to share with fair members that possibly might not be able to attend. We really appreciate all the help! If there are any topics that you don't see here that you would like to see next year, please let us know at the convention or drop us a note stating the topic and the title. Hope to see you all there. Have a wonderful Holiday Season!!



103rd ANNUAL CONVENTION
PA State Association of County Fairs and
PA State Showmen's Association
The Hershey Lodge & Convention Center,
Hershey PA
Wednesday - Saturday, Jan. 21 - 24, 2015



HOTEL RESERVATIONS

2015 Convention reservations will now be accepted by the Hershey Lodge.
 Deadline is January 5, 2015. For lodging:

phone 1-800-HERSHEY (717-437-7439) or online at <https://resweb.passkey.com/go/PSACF2015>

All Queen candidates must use the Queen special code of FAIRQUEEN2015; otherwise, no special code is required. Be sure you have a credit card with you and respond to all questions. Rooms will be available by 4:00pm and check out at 11:00am daily for all.

CONVENTION REGISTRATION

ADVANCE REGISTRATION is essential to the smooth operation of the convention. Registration is:

\$30 (received on or before December 15, 2014)

\$50 (received after December 15, 2014)

MEALS

Meal(s) that are purchased are not refundable; there will be a bulletin board near the registration area for you to place a "for sale" notice if you wish to resell them. A limited number will be available for purchase at convention.

TENTATIVE CONVENTION SCHEDULE

Wednesday, January 21, 2015

MEALS ON YOUR OWN-ALL

8:30am-2:30pm Food Safety-"Serv Safe" (see newsletter article for details – PA Showmen or fairs who are members of PA Showmen [1 person per fair] may register; others to be considered after deadline if space available) Click here to obtain registration form.

9:30am-4:00pm Consumer Protection Program Workshop (Box Lunch \$16/ or on your own 15 minutes for lunch break. Must register before Dec 31, 2014) Click here to obtain registration form.

11:00am-5:00pm	Registration Desk Open
12:30pm-3:45pm	Seminar - "Judging School"
2:00pm-3:00pm	Table Topics 7, 13
2:00pm-4:00pm	Seminar - "Trucking Regulations Update"
3:15pm-4:15pm	Table Topics 8,17
4:00pm-8:00pm	Enter Communication Exhibits
	Trade Show Set-up
4:45pm	PSSA Board Meeting
4:45pm	PSACF Board/Reorg. Meeting
6:30pm-10:00pm	ENTERTAINMENT SHOWCASE

Thursday, January 22, 2015

MEALS ON YOUR OWN-BREAKFAST & LUNCH

8:00am-5:00pm	Registration Desk Open
8:00am-9:00am	Enter Communication Exhibits
8:00am-10:30am	Trade Show Set-up
8:30am-9:00am	First-Timers Session
9:00am-9:30am	Opening Entertainment
9:30am-10:45am	Opening Celebration
	Keynote Speaker – Chad Hymas
10:30am-4:00pm	Trade Show Open
	Communication Exhibits Open
	(Badge Required)
10:30am-4:00pm	PA Dept. of Agriculture display, etc.

1:00pm-2:30pm	Seminar – 60 Tips in 60 Minutes
1:00pm-3:15pm	Spouse Program - "Bag & Basket" Bingo
1:15pm-2:15pm	Table Topics 4,6,20
1:30pm-3:00pm	Meeting - Sire, Quaker & USTA
3:00pm-4:30pm	Seminar – "Leadership"
3:15pm-4:15pm	Table Topics 1,10,11
4:00pm	Associates Gathering
5:30pm	PSACF & PSSA Board
	Group Photos
5:45pm	Hospitality Time & Cash Bar
6:15pm	PSACF ANNUAL BANQUET
6:45pm	Dinner (reserved seating-ticket required-\$32)

Friday, January 23, 2015

MEAL ON YOUR OWN-LUNCH

7:30am-5:00pm	Registration Desk Open
7:30am	COMMUNICATIONS BREAKFAST
	meal (served) 7:30am; awards 8:15am-9:00am
	(ticket required-\$17)
9:15am-11:00am	Memorial Service /
	PSACF Annual Meeting
10:30am-4:00pm	Trade Show Open
	Communication Exhibits Open
	(Badge Required)
10:30am-4:00pm	PA Dept. of Agriculture display, etc.
12:30pm-2:00pm	Seminar- Put Your Carnival Cards on the Table
12:30pm-2:00pm	Round Table –Pa Fair Fund Reimbursement
2:00pm-3:30pm	Seminar - "Special Baking Contests"
2:00pm-3:30pm	Spouse Program - "Flower Arranging 101"
2:15pm-4:00pm	Seminar – R U Really an Ag-vocate?
2:15pm-3:15pm	Table Topics 7, 9, 12
3:30pm-4:30pm	Table Topics 3, 5, 15
6:15pm	Hospitality Time & Cash Bar
6:45pm	PA SHOWMEN ANNUAL BANQUET
	(Reserved seating-ticket required-\$34)

Saturday, January 24, 2015

7:30am-5:00pm	Registration Desk Open
7:00am-8:30am	BREAKFAST (buffet)
	(ticket required-\$15)
8:45am-10:15am	Seminar – What Constitutes a Good Fair Organization?
9:00am-10:30am	Seminar – Opportunities in Agriculture for Youth
9:00am-10:00am	Table Topics 2, 16, 19
9:00am-Noon	Trade Show Open
	Communication Exhibits Open
	(Badge Required)
9:30am-11:00am	Seminar – "Food Safety Updates"
9:30am-10:45am	Spouse Program – Antique Appraisal
10:30am-11:30am	Table Topics 4, 14, 18
11:30am-12:30pm	PSSA Annual Meeting
Noon-12:30pm	Communication Exhibits Released
Noon	BOX LUNCHEON
	(ticket required-\$16)
[followed by drawings at 12:30pm]	Auction Drawings - Winner must be present
2:45pm-4:15pm	Family Feud
4:30pm	Mass
6:00pm	QUEEN CORONATION BANQUET
	(Reserved seating-ticket required-\$32)

Sunday, January 25, 2015

8:00am	PSACF Exec. / Conv. Breakfast
--------	-------------------------------

TABLE TOPICS

1. IAFE "101" – with Marla Calico
2. Escorts on or from your grounds – Do you really need one?
3. Advance Promotions: Timing & Techniques – by Neal Fehnel
4. Big name Sponsors – how do I get them
5. Animal Health Issues
6. Overwhelmed with what? (campers, employees, people in general?) You tell us!!
7. Volunteers
8. Introduction to Social Media – By Spots N Dots
9. Bring on the Press!! Media handling before, during, and after the crisis.
10. Midway Promotions That Work – by Allen Bartlebaugh
11. Online entries at their Best!!
12. Screening those "unwanted" vendors
13. LOST!!!!
14. Free Family Fun
15. Intermediate Social Media – with Spots N Dots
16. Martech made easy with I Pads
17. Planning for the worst – can you?
18. Board Members Only Session
19. Museums on your fairgrounds
20. Junior Fair Boards

SEMINARS

Food Safety Updates

The Food Safety updates will be presented by The PA Department of Agriculture. – Lydia Johnson

Consumer Protection Program Workshop

The IAFE, working with Dr. Stephen Neel of Technical Solutions International, developed the Consumer Protection Program Workshop to help fairs understand enteric pathogens such as E.Coli and to provide information on controlling traffic flow in all animal areas (not just petting zoos), creating proper signage, installing hand-wash areas and establishing specific cleaning protocols. The cost is \$150.00 per person. The fee will cover the binder that will be given to the participant.

2015 Judges School

The day starts with an orientation session on ethics in the judging process. This is followed by the six sessions. Session choices for this year are: Nuts, Vegetables, Flowers, Baked Goods, Canned & Preserved Food, Antiques. The fee for the school is \$10.00 per person. At the conclusion of the sessions a certificate of attendance is given to all participants who complete the program. A registration form is located in the convention packet and as a link from the home page of the association web site.

Trucking Regulations Update

The latest updates for the industry.

Keynote Speaker, Chad Hymas

Chad Hymas, a well-known motivational speaker will be at Hershey addressing us for the opening of the 2015 convention. Chad has an incredible resume and has travelled all over the world presenting too many organizations and companies. Chad has also presented at the annual IAFE convention a couple of years ago. Chad not only has the challenges of a busy travel schedule, but also faces a handicap that he will tell you more about.

60 Tips in 60 seconds

Presented by Marla J. Calico, CFE Chief Operating Officer of IAFE. This is a fast – paced workshop with quick tips in every area of fair operations which can be implemented at any size fair. Operation areas covered include Carnival, Food & Concessions, Agriculture, Competitive Exhibits, Sponsorship, Promotions & Marketing, and General Operations.

Special Baking Contests

Karen Dobson and Kevin Bieber will be updating everyone who runs any of the Special Contests at your fairs. This is also the perfect time to come and ask questions regarding any of those contests.

Family Feud

Sign your fair up now, the deadline is December 1st. How do you sign up? It is easy, please e-mail me at kevin.bieber@nationalpenn.com or call my cell at 484-256-8009 and I will put you on the list. Make sure you have 5 willing players from your fair who will participate. If I have more than 4 fairs that would like to participate, the PSACF Board will hold a drawing to see who will be on the Feud!!!!

Leadership

Finding a Leadership Balance

Does your fair provide good leadership? Do your volunteers want to keep coming back year after year? Have you taken a good hard look at the leadership your fair has provided in the past? Let's talk about finding the balance between delegating duties, recognizing talents, holding people accountable for their work, and praise for a job well done. What makes a fair successful is sometimes as simple as the leadership that fair receives from their fair board, management, or volunteers. Leadership of a fair can be as unique as the fair itself, so let's see what's working in the fair industry and how your fair can do better.

Jayne Buttke has been the Executive Secretary/Treasurer for the Wisconsin Association of Fairs since 2005. In recent years, Jayne served as President of the Federation of State and Provincial Fairs, served on the IAFE Board of Directors, and in 2012 received the IAFE "Rising Star" award. She graduated from the Institute of Fair Management in 2011 and received her CFE designation in 2012. Jayne grew up with the fair and feels blessed to be employed in such a great industry.

Put Your Carnival Cards on the Table

– What you always wanted to know about Carnivals but were afraid to ask! The OABA's President / CEO Bob Johnson, along with a few carnival owners will moderate this educational seminar, fielding questions (or staging them from discussion) concerning contracts with fairs, ride/game/food mix on the midway, ride safety and regulations, third party inspections, or other burning questions on your mind.

R U Really an Ag-vocate?

America's fairs were established as an event to highlight agriculture. Most fairs have agriculture as a focal point of their mission statement. What does it take for the fair as an event and you as an individual to be the "best" agriculture advocate possible. Being an Ag-vocate takes a special level of characteristics to be effective. This session will be an opportunity to delve into what it takes to be a quality advocate for agriculture. Barney Cosner presenter.

Opportunities in Agricultural for Youth

Casey Hall is a Senior at Penn State University studying Biological Engineering with a focus in Food and Biological Processing. In 2010, she was the Pennsylvania State Fair Queen and 2011-2012 Pennsylvania FFA State President. Currently, Casey serves on the PA Fair Advisory Board where she was appointed by Secretary of Agriculture, George Greig to the position in 2012. She loves promoting agriculture, especially to those that do not come from an agricultural background. In the future, Casey hopes to work for a food processing company or in production agriculture.

PA Fair Fund Reimbursement

Fair Fund Act and the reimbursement application processing. Boots and Michelle Worden will be discussing the reimbursement application and the importance of the information contained. How to minimize your problems and speed up the reimbursement process. Boots was appointed as the Special Advisor to the Governor for Agriculture. He is the ambassador for Governor Corbett on issues facing rural communities, the agriculture industry and state/federal agriculture partnerships. Boots also administers the fair fund. In addition, he works on special projects assigned by the governor and Secretary of Agriculture George Greig.

What Constitutes a Good Fair Organization?

This will be your chance to create a better than "good" fair organization from ground zero. What components need to be in place to allow a fair to achieve the highest level possible? As an individual; as a member of a board, committee or team, what does it take to maximize skills and / or talent to provide optimum service to the fair organization. This topic is a challenge to every fair organization, this session will provide an opportunity to think outside "our" box and provide an overview to enhance fairs for the future.

Barney Cosner, CFE – Barney serves as the Director of the Fair & Rodeo in Riverton, WY. He was the Executive Director at the Nebraska State Fair and the Director of the Wyoming State Fair and Rodeo. Barney also has experiences as Assistant Professor and Extension Youth Livestock Specialist in the Department of Animal Sciences at Colorado State University and was Director of Agriculture/Livestock at the State Fair of Texas and Livestock Show Manager at the National Western Stock Show in Denver, CO

Servsafe

Maxine Thompson is a certified Servsafe Instructor and Examination Proctor, certified thru the National Restaurant Association and has taught food safety and sanitation classes since 2007. She has over 25 years of food industry experience ranging from restaurant and retail work to working for the Commonwealth of Pennsylvania as a Food Service Supervisor. Maxine is currently studying to become a food service and retail establishment HACCP trainer.

2015 PA STATE FAIR QUEEN CONTEST SCHEDULE –TENTATIVE SCHEDULE

Wednesday, January 21, 2015

Raffle Table Set Up

Thursday, January 22, 2015

10:30am – 1:00pm	Queen Program – 2015 Contest Packet Distribution
12:00pm – 4:00pm	Raffle Table Open to benefit Queen Program
3:00pm – 3:30pm	Queen Contestant Check-in
3:30pm – 4:15pm	Queen Contestant Orientation
6:00pm	Line Up for Evening Gown Competition
6:15pm	Evening Gown and Introduction Competition
6:45pm	PSACF Annual Banquet
Immediately after Banquet	Queen Contestants Group Photo & Gift Exchange

Friday, January 23, 2015

7:00am – 12:00pm	Interviews - Morning Session
10:00am – 4:00pm	Raffle Table Open to benefit Queen Program
11:00am – 12:00pm	Seminar – Denise Yoho
11:00am – 1:00pm	Queen Program – 2015 Contest Packet Distribution
1:00pm – 5:00pm	Interviews - Afternoon Session
2:15pm – 3:15pm	Seminar – Denise Yoho
3:30pm – 4:30pm	Queen Coordinators' "Idea Exchange" (and 2015 Contest Packet Distribution)
5:30pm – 6:15pm	Judges Reception with Contestants
7:00pm – 9:00pm	Queen Lia Schmittell's Pizza Party with Contestants

Saturday, January 24, 2015

7:30am – 12:00pm	Speech Competition – Morning Session
9:00am – 12:45pm	Raffle Table Open to benefit Queen Program
9:00am – 10:30am	Seminar – "PA Fair Queen Program Overview" and 2015 Contest Packet Distribution
9:00am – 1:45pm	Hair Styling Appointments
10:45am-11:45am	Panel Discussion – TBD
12:30pm	Drawing for Raffle Table items
1:15pm – 3:00pm	Speech Competition – Afternoon Session
4:30pm	Rehearsal for Coronation
6:00pm	Coronation Banquet (Reserved Seating - Ticket Required - \$32)
7:15pm	Line Up for Coronation
7:30 – 8:45pm	Coronation Ceremony
9:00pm	Media Photos / 2015 PA Fair Queen Meeting with State Coordinator

Visit the PA State Fair Queen Program's Basket Auction and Raffle Table in the Great Lobby.
50/50 raffle tickets will also be sold in the Chocolate Ballroom Lobby
Wed, Thurs & Sat. evenings, and Fri evening in the Fireplace lobby.

Msgr. John Mignot PSACF Scholarship 2014 Winners — Jim Davis

Kayla Wright is a junior at Penn State where she is majoring in nursing. Kayla has been active as a fair queen, and has exhibited in many departments through 4-H and FFA programs. Many of Kayla's honors were from the Sign Language Organization, Teach Ag Society, FFA American Degree, and the PA Farm Show scholarship. Kayla remains loyal to the fair of her childhood by exhibiting, volunteering, and making the community just a little better by reaching out with helping hands. Kayla grew up at the Huntingdon County Fair, and invites you to visit where you will observe six active FFA chapters.

Morgan Gizzi is a first year student at the University of Delaware in Mechanical Engineering. In addition to being an outstanding student, Morgan took over the petting zoo at her home fair. She was very conscious of sanitation, not only for the animals, but the children who was enjoying the hands-on experience. When Morgan wasn't at the petting zoo location, she could be found in the show ring exhibiting her animals. Morgan is from Lancaster County, and in her comfort zone at the Elizabethtown Fair. **Simone Lichty** is a basketball point guard and gives credit for that pivotal role to her growth through the 4-H program which exemplifies serving community. Simone could be found on the fairgrounds painting the outside of the milk house and cleaning the inside, cleaning the huge kitchen which serves bountiful meals, scraping and painting the show ring bleachers, and making her community proud both on and off the court. Simone indicates, if you look up from Route 6 where Marcellus Shale reigns supreme, you will find the fair she calls home, Tioga County Fair.

Amber Gabel is a sophomore at Penn State University in preparation to become a large animal veterinarian. She grew up milking cows, so her passion for agriculture started at an early

age. Ms. Gabel recalls that when she was too little to reach the pipe line is when she extended her reach and the fair became a central point of not only her life but also who she is as a person. As she extends that reach, Amber looks forward to returning to the family dairy farm, advocating for the dairy industry, agriculture, youth programs, and county fairs. As you travel Route 22 & 322 to the state capital, look to the right and across the Juniata River and you will find her Perry County Fair.

Emily Housler is in her first year at Mercyhurst University majoring in Music Education. Emily has been involved in major construction projects on the fair grounds with the building of the Larry Ackley Livestock Complex, installing goat stalls, painting, clean-up and planting of flowers. Emily volunteered for the past five years helping community folks fill out and file entries. This young lady from the Allegheny National Forest can be found before, during, and after at the McKean County Fair.

Megan Forgy is in her first year at South Hills School of Business and Technology. Megan plans to obtain a degree in diagnostic medical sonography. Megan goes beyond the call of duty in all areas of life including community. She is actively involved in her church and recently completed her first mission trip to Central America. At the fair, Megan has spent countless hours volunteering in the vendor office and at the front desk handling entries, greeting community members, answering the telephone, and running errands. As FFA president, Megan exhibited her leadership skills with all members participating at the barns. Megan indicates because of her county fair, she is better equipped to obtain a job, become a proactive member in any community, and just accomplish anything that life may offer. If you are traveling to the Raystown Lake in August, Megan invites you to visit the Huntingdon County Fair.



OUTSTANDING FAIR AMBASSADOR AWARDS

FAIR NAME	RECEPIANT OF AWARD	2014
Albion Area Fair	Harold "Frosty" Crane	1
Allentown Fair	Faye Trobetsky	1
Beaver Community Fair	Warren Dutrow	1
Bedford County Fair	Paul Shaffer	1
Berlin Brothersvalley Community Fair	Brad Flick and Tim Rhoads	1
Big Knob Grange Fair	Bill Steel	1
Bloomsburg Fair	Marie Williams	1
Blue Valley Farm Show		
Bullskin Township Community Fair		
Butler Fair	Glenn Montgomery	1
Butler Farm Show	Elmer Colteryahn	1
Cambria County Fair	Dave Mastrine	1
Cameron County Fair		
Carbon County Fair	Leroy "Butch" Wentzel	1
Centre County Grange Encamp. and Fair	LeDon Young	1
Clarion County Fair	Marlin Rupp	1
Claysburg Farm Show		
Clearfield County Fair	Brenda Morgan	1
Clinton County Fair	Blair Courter	1
Cochranon Community Fair		
Cookport Fair	Tom V. Patterson	1
Crawford County Fair	Art Getchell	1
Cumberland Ag Expo	Scott Lemmon	1
Dawson Grange Community Fair		
Dayton Fair	Shirley Huff	1
Delaware Valley College A-Day		
Denver Fair	Nevin and Pat McQuate	1
Derry Township Agricultural Fair		
Dillsburg Community Fair	Al Kauffman	1
Elizabethtown Fair	Michael Halterman	1
Elk County Fair		
Ephrata Fair		
Erie County Fair	Micki Wassel	1
Fayette County Fair	Nancy Herring	1
Franklin County Fair	Travis Fortney	1
Fulton County Fair	Lyle Mellott	1
Goshen Country Fair		
Gratz Fair	James A. Reed, Sr.	1
Greene County Fair	Janet Mawhinney	1
Greene-Dreher-Sterling Fair		
Harford Fair	Cindy G. Reynolds	1
Harmony Grange Fair	June Hughes	1
Hollisdaysburg Community		

OUTSTANDING FAIR AMBASSADOR AWARDS

FAIR NAME	RECEPIANT OF AWARD	2014
Hookstown Fair	James Scott	1
Huntingdon County Fair	Nancy Hallman Greene	1
Indiana County Fair	Debra "Debbie" Streams	1
Jacktown Fair	Walter "Buck" Burns	1
Jamestown Community Fair	Jamestown Volunteer Fire Department	1
Jefferson County Fair	James Grant	1
Jefferson Township Fair		
Juniata County Fair	Krista L. Pontius	1
Kempton County Fair	Kimberly Moyer-Bercaw	1
Kimberton Community Fair	Dave Gold	1
Kiwanis Wyoming County Fair	Marjorie B. Singer	1
Kutztown Fair	Donald Reinert	1
Lawrence County Fair	Wendall "Don" Wilson	1
Lebanon Area Fair	Debra "Debbie" Tice	1
Luzerne County Fair	Alan Pugh	1
Lycoming County Fair	James "Rocky" Reed	1
Mainheim Community Farm Show	Seth and Diane Kensinger	1
Mason Dixon Fair	April Cooper	1
McClure Bean Soup Festival and Fair		
McKean County Fair	William "Bill" Lord	1
Mercer County Grange Fair	Bill and Helen Straub	1
Middletown Grange Fair		
Mifflin County Youth Fair	Frank Bonson	1
Montour-Delong Community Fair	Carl and Priscilla Buck	1
Morrisons Cove Dairy Show		
Mountain Area Fair		
New Holland Farmers Fair	William R. Fisher	1
North East Community Fair	Wayne and Gerry Luke	1
Northeast Fair	Allan Capozucca	1
Northumberland County Fair	Jane L. Rebuck	1
Oley Valley Community Fair	Daniel "Butch" Levengood	1
Ox Hill Community Fair		
PA Maple Festival		
Perry County Community Fair	Ruth H. Britcher	1
Plainfield Farmers Fair	Susan Hahn	1
Potter County Fair		
Reading Fair	John Aulenbach	1
Schnecksville Community Fair	Naomi Grim	1
Schuylkill County Fair	Charlie Helm	1
Sewickley Township Community Fair	James D. Hager	1
Shippensburg Community Fair	David Hayhurst and Morgan Godfrey	1
Sinking Valley Fair		
Somerset County Fair	Cecil Petenbrink	1

OUTSTANDING FAIR AMBASSADOR AWARDS

FAIR NAME	RECEIPIANT OF AWARD	
South Mountain Fair	Bob and Ina Bucher	1
Southern Lancaster County Fair (Solanco)	Jim and Eleanor Kreider	1
Spartansburg Community Fair		
Stoneboro Fair	Bob Calvert	1
Sullivan County Fair	Ronald "Ronnie" McCarty	1
Sykesville Ag and Youth Fair		
Tioga County Fair	Kevin Houghtaling	1
Transfer Harvest Home Fair		
Troy Fair	Mike Powers	1
Union County West End Fair	Don Shirk	1
Unionville Community Fair	David and Debbie Pritchard	1
Venango County Fair	Jack Hoffman	1
Warren County Fair	Jim Chase	1
Washington County Ag Fair	Bill and Judy Iams	1
Waterford Community Fair	Michael S. Jenkins	1
Wayne County Fair	Leslie Mang	1
West Alexander Fair	Dwight Reed Hunter	1
West End Fair	Dorothy Davidson	1
West Lampeter Community Fair	David and Sue Martin	1
Westmoreland Fair	Thelma Heide	1
Williamsburg Community Farm Show	Joseph J. Very	1
Wolf's Corners Fair	Joyce Zuck	1
York Fair	Michael N. Rutter	1
TOTAL		84

Spouse Program for 2015

The activities at the 2015 PSACF/PSSA Convention will feature:

- A "Ticket Auction" in the Chocolate Ballroom (prizes to be awarded on Saturday at 12:30PM). Wednesday – shopping on your own at the many outlets and malls in the Hershey area.

Thursday afternoon, the Showmen's Association and the Fair's Association will conduct a "Bag and Basket" Bingo (Vera Bradley bags and American Tradition baskets) from 1:00PM - 3:15PM. Purchase cards at the door.

- Friday afternoon, "Flower Arranging 101" make a floral arrangement to take home from 2:00PM - 3:30PM.

- Saturday morning, "Antique Appraisal" from 9:30AM - 10:45AM. Bring your antiques to share with others and have them appraised

All fairs and showmen are requested to donate one (1) or two (2) gifts for use in the above activities. Your support is truly needed and will be greatly appreciated.

MASTER HYPNOTIST MICHAEL BLAINE

The most entertaining Comedy Stage
Hypnotist in the USA.

Email: hpntst@aol.com

Tel: (518) 643-9589

Cell: (518) 424-5998

www.michaelblaine.com

Fairs - Festivals - Corporate Events -
Schools - Fundraisers - Colleges - High

YOU'RE PLANNING THE FAIR

NOW LET US HANDLE THE ADVERTISING TO INCREASE ATTENDANCE

 **BEYOND**
Spots & Dots



Proud Member of the Pennsylvania
State Association of County Fairs

1034 Fifth Avenue P: 412.281.6215
Pittsburgh, PA 15219 F: 412.281.6218

BeyondSpotsAndDots.com

PENNSYLVANIA STATE FAIR QUEEN

— Lia Schmittel



It is hard even now as I write this last article, and very bittersweet as my year is coming to an end. It has been an adventure and one that will not soon be forgotten. The past few months have calmed down a bit compared to the rest of the year. I traveled to a handful of September fairs and Farm City Days. I had the chance of spending the day with some of the remarkable young women who we can all be honored to call our fair queens. They all did such an amazing job being tour guides to the youth and sharing their love for agriculture. The day was certainly better having them all there. As the year comes to an end I find myself busy making displays, scrapbooks, and writing very one last speech. I have found such joy in going through the many pictures from the year and reliving all of the memories. Pennsylvania is full of many hidden treasures, including all of those who help to keep Pennsylvania fairs alive. Thank you to everyone who has welcomed me with open arms and helped me throughout this year. I find myself almost in tears just writing this.

The greatest lesson I have learned over my year as Pa Fair Queen was to always —
Treasure the Memories.

Lia Schmittel
Pa. Fair Queen 2014



YOU'RE PLANNING THE FAIR

NOW LET US HANDLE THE ADVERTISING TO INCREASE ATTENDANCE

BEYOND
Spots & Dots

1034 Fifth Avenue P: 412.281.6215
Pittsburgh, PA 15219 F: 412.281.6218
BeyondSpotsAndDots.com

PSACF
Proud Member of the Pennsylvania
State Association of County Fairs



The Secretary's Notepad

— Harry Reffner

2015 Theme

The 2015 fair season theme and for the fair display at the 2016 convention, is "Harvest The Fun". A theme logo is on the website.

Recent Mailings

All mailings for the last quarter of the year have been completed. Fairs were given at zone meetings or mailed a 2015 convention packet, Request For Information for your next year's fair, a letter concerning the 2015 convention's Annual Meeting and a Voting Delegate form. Associates were mailed a 2015 convention packet, trade show packet, and dues notice.

Convention Schedules & Lodging Reservations

Governor Elect Wolfe is having an inaugural ball at Hershey, preceding our Convention, which has necessitated changing of rooms where our events are being held; at convention please verify the rooms on the displays board at Convention to those seminars/table topics you plan on attending. Reservations early in the week have been placed on a waiting list with Hershey due to the attendees of the Ball.

Distribution of Material at Convention

Hershey Lodge and PSACF personnel will enforce the NO distribution of material (printed matter, CDs, tapes, etc.) on public tables in the Great Lobby, Chocolate Lobby and Chocolate Ballroom (except performing acts).

PSACF/Msgr. John W. Minot Scholarship Program

The six recipients for 2014 are noted in an article in this newsletter. The 2015 scholarship material will be released early next year. Through the efforts of the Spouse program at our 2014 convention, and donations of a number of Fairs and individuals, the six scholarships were entirely funded.

2015 IAFE Zone 1 Conference

The conference will be held at the Millenium Hotel in Buffalo, New York, May 14 – 16 2015. The Conference is being hosted by the Erie County Fair (NY). Each fair that is a member of IAFE will receive complete details early next year and a link to Zone 1 will be on the association website.

Banquet Entertainment

Chubby Checker will be performing at the Annual PSACF Banquet, while at the Annual PSSA Banquet The Large Flowerheads will perform.

New PSACF Website

The website has been changed over to the new Saffire site, several fairs have taken advantage of the new capabilities of the site.

Fairs: Emails were sent out from Saffire with your sign on information. It is best to do a copy and paste of the password instead of keying manually.

Associates: Saffire is still in the process of converting the associates file. We hope to have this completed in January. At that time Saffire will email the required sign on information.

If you encounter a problem please email me hreffner@centurylink.net, and I will get back to you.

Associates Dues

The 2015 Directory is being developed, if dues have not been received, your name will not appear in the directory.



Wishing you a Happy New Year, and looking forward to seeing you in Hershey.

The MidLife Cowboys Band



"Range Rovin" Richard Rupert

"Bluesman" Chris Trasatti

"Too Dang Cool" Ed Scholl

"Miss Alison" Alison Rupert

"Trail Boss" Gary Stoner

"Saddle Sore" Mike Celline

GOT A HANKERIN' FOR A ONE-OF-A-KIND SHOW?

These spit 'n' polished buckaroos from PA pack a saddlebag-full of music most folks haven't heard since the buffalo roamed - cowboy songs, western swing, old-time country and originals! Round up a rip-roarin' good time at your shindig with

The MidLife Cowboys Band!

www.MidLifeCowboysBand.com

(570)-768-7383

WELCOME NEW ASSOCIATES

Attractions, Miscellaneous

John Measner Magic Show

P. O. Box 1972 Bridgeview IL 60455
Phone: (708) 425-4558 Phone 2: Fax:
WebSite: www.jmmagic.com E-Mail: john@jmmagic.com Info:
Family magic & illusion show with live animals. Complete with portable stage. Stilt walking.

Skeeta The Clown & Friends

2536 Eastern Blvd., Suite 180 York PA 17402
Phone: (717) 751-1720 Phone 2: (443) 939-9547 Fax:
WebSite: www.skeetathecrown.com E-Mail: Skeeta@skeetathecrown.com
Info: Fast paced children variety entertainment that creatively combines comedy magic, storytelling, puppets & more!

Attractions, Thrill & Stunt Shows

Team Aftershock Monster Truck, LLC

12377 Sisson Highway Lawtons NY 14091
Phone: (607) 227-3278 Phone 2: Fax:
WebSite: www.aftershockmonstertruck.com E-Mail: mark@aftershockmonstertruck.com
Info: Monster truck event booking and support acts

Musical Attractions

Alex Hilton Band

199 Steed Ln Front Royal VA 22630
Phone: (540) 660-1159 Phone 2: Fax:
WebSite: www.AlexHiltonBand.com E-Mail: alexhilton-band@gmail.com Info: Modern Country music group

Jordyn Albanese Singer

1009 Mtn. Ave Pen Argyl PA 18072
Phone: (610) 217-6373 Phone 2: Fax:
WebSite: E-Mail: johnalbanese@ptd.net
Info: Jordyn Albanese - 14 year old singer/songwriter performs originals & covers plays guitar, harmonica, ukulele & piano. From Pen Argyl, PA.

Buffalo & Brandy

6611 Royal Parkway North Lockport NY 14094
Phone: (716) 998-1418 Phone 2: Fax:
WebSite: www.buffaloandbrandy.org E-Mail: buffaloandbrandy@gmail.com Info: Stage performers providing music, singing, magic, interaction and family fun!!

Carolyn Mescher

305 A Lauderdale Rd Nashville TN 37205
Phone: (805) 402-8529 Phone 2: Fax:
WebSite: www.carolynmescher.com E-Mail: book-ing@carolynmescher.com Info: Nationally touring, Nashville recording artist rocks the stage with her own brand of country music!

The Chad Reinert Show

870 Bear Creek St Auburn PA 17922
Phone: (484) 256-1703 Phone 2: Fax:
WebSite: www.chadreiner.net E-Mail: cr@toneslinger.com Info: Nashville recording artist entertainer, singer, songwriter.

Dean Crawford and the Dunn's River Band

107 Albert Drive Glen Burnie MD 21060
Phone: (443) 577-6423 Phone 2: Fax:
WebSite: www.mdparty.com/deancrawford E-Mail: dcdunnsriverband@hotmail.com
Info: Hardest working country band in the Mid-Atlantic region, nominated for the Best Country Band in Maryland 2014

Giovannia "Live" Productions

4100 Swartara Dr Oberlin PA 17113
Phone: (717) 649-1195 Phone 2: (717) 939-4462 Fax:
WebSite: E-Mail: trainojohn@yahoo.com
Info: One man show, theatrical performance, musical attraction

Erin Kelly

2976 Albright Ave. Allentown PA 18104
Phone: (610) 432-6892 Phone 2: (610) 248-4056 Fax:
WebSite: www.erinkellymusic.com E-Mail: erinkellymusic@aol.com
Info: Country music artist with a diverse setlist of songs, perfect for all ages.

Randall Ginley Band

PO Box 312 Milton PA 17847
Phone: (570) 428-2101 Phone 2: Fax:
WebSite: E-Mail: the-randalls@hotmail.com
Info: Live music (5) piece country music band. Traditional country music and original songs.

The Sound of Charles Lee

423 N. Union St Middletown PA 17057
Phone: (717) 944-3444 Phone 2: Fax: (877) 376-3406
WebSite: www.charleslee.us E-Mail: charleyit@yahoo.com Info:
Performing vocalist, specializing in Motown, oldies, and standards.

Other

The Juggling Hoffmans

34 Oklahoma State Dr. Newark DE 19713
Phone: (302) 737-3163 Phone 2: (302) 229-8768 Fax:
WebSite: www.jugglinghoffmans.com E-Mail: jugglinghoffmans@comcast.net
Info: Juggling variety show, strolling entertainment. Laugh along interactive good time for all ages - Two performers.

Talent/Booking

Booking House Inc 4652 James Austin Drive Mississauga, Ontario CA L4Z4H1
Phone: (905) 755-1927 Phone 2: (705) 626-8770 Fax: (905) 755-1928
WebSite: www.bookinghouse.com E-Mail: info@bookinghouse.com
Info: Supplier of quality tribute acts since 1994.

WOW Attractions

PO Box 1397 Roanoke TX 76262
Phone: (817) 350-4592 Phone 2: (817) 995-3339 Fax: (817) 231-0157
WebSite: www.wowattractions.com E-Mail: brenda@wowattractions.com
Info: Booking agency representing award winning performers to experiential attractions.

Pennsylvania State Fair Queen Program

— Karen Dobson

The PA Fair Queen Program is excited to announce there will be **59 contestants** competing for the title of 2015 PA Fair Queen! Contestant Handbooks will be mailed in early December with details about how to prepare. Fairs are reminded to register their Contestants, queen coordinators, family/friends and fair board members for Convention, meals and hotel accommodations by the deadlines set in the Convention packet. Whether you are from a fair that already has a Queen or are interested in starting a Queen Program, there is something at convention for you! Just check out the Queen Schedule in this edition of FairTalk for more details. The Convention's finale will be the grand Coronation Banquet that will showcase the finest young ladies in Pennsylvania! Our attendance grows every year, so seats will sell out quickly. **Don't delay in ordering your Coronation tickets!**



The Fundraising Committee is working on their display of amazing gift baskets, raffle prizes and live auction items. **Back by popular demand will be another autographed guitar** signed by some of country music's hottest stars – many of whom were big winners at the 2014 CMA Award show last month:

Florida Georgia Line – 2014 Vocal Duo Award

Miranda Lambert – 2014 Single, Album and Female Vocalist Awards

Keith Urban – 2014 Musical Event Award with Miranda Lambert

Luke Bryan – 2014 Entertainer of the Year Award

Lady Antebellum – 2012 ACM Vocal Group Award; 2011 CMA Top Vocal Group and Album Awards

Hunter Hayes – 2012 New Artist Award

These artists don't usually allow their autographs to be used. But when our friend Todd Boltin from Variety Attractions explained our fundraiser to them, they all wanted to help! So come prepared to bid on this valuable piece of memorabilia at the Coronation Banquet! Want to get in on the fundraising fun? There's still time. Just contact Judy Kmetz or John Berne if you or your fair are interested in donating an item or gift basket.

There were 17 fairs who invited the PA Fair Queen to their event this summer. 2014 PA Fair Queen Lia Schmittel and Alternate Kelley Jay were excited to go and promote PA Fairs and Agriculture! Thank you to the PA State Association of County Fairs for their continued support by funding Lia and Kelley's mileage expenses so that appearances could be made possible.

2014 BOARD OF DIRECTORS & OFFICERS:

John Berne, Chairman
Bitsey Kopfinger, Vice Chairman
Karen Dobson, Secretary
Gary Moore, Treasurer, Grants
Ruth Trumbetta, Director
John Blaney, PSACF President

2014 PROGRAM COORDINATORS:

Bitsey Kopfinger, Correspondence
Karen Dobson & Shelly Shaffer, State Contest
Martha Ebersole, Events/Publicity
John Berne, Judy Kmetz, Charlotte Williams, Fundraising



News from the IAFE

Coloring Books and “Read & Win” Ribbons Available

Coloring books and “Read & Win” ribbons are great additions to children’s programs at the fair. The coloring books are available at a nominal charge to IAFE member fairs. In partnership with the National Independent Concessionaires’ Association (NICA), each fair can receive up to 1,000 ribbons (nominal charge for additional ribbons). The books are a great value at \$10 per 100 copies and make excellent participation prizes, coloring contest materials, or promotional items. The IAFE/NICA Read & Win program benefits local elementary-school children by encouraging them to read library books.

To participate in the Read & Win program, fairs first develop a free or discounted voucher offer to be awarded along with the Read & Win bookmark. Fairs then make arrangements with their local libraries and school departments to distribute the rewards. The IAFE office will provide up to 1,000 complimentary ribbons to each participating fair. Additional ribbons may be purchased for 7 cents each. It is recommended that the initial number of ribbons ordered equal 20% of the total number of students enrolled in grades one through eight in

the region the fair plans to include in the program. Fairs are responsible for providing their own publicity and are asked to submit a follow-up report on the success of the program to the IAFE office. The reports are shared with NICA.

To order the coloring books and/or the Read & Win ribbons, go to the “Product Information” section of the IAFE website.

Make a Request for an Ag Activity Station

Now is the time for IAFE member fairs to schedule an ag activity station for their upcoming fairs. The IAFE offers three different activity stations to fairs at no charge (minus the cost of shipping to the next fair). Each ag activity station provides an interactive and educational experience for any fair or special ag event.

The Corn is Everywhere Activity Station is an engaging, entertaining, educational way to provide families an opportunity to learn that corn can be found in many every products. Fairgoers will enjoy the corn “plinko” game, tossing corn bags, and more. The Milk Maker Activity Station teaches fairgoers where milk comes from and the process of milking a cow. The Farmer for a Day Activity Station teaches children about farming and how food gets to their plate.

To download an Activity Station Order Form, go to the “Products Information” section of the IAFE website.

IAFE Zone 1 Meeting

The 2015 IAFE Zone 1 Meeting will be held May 14-16 in Buffalo N.Y., and be hosted by the Erie County Fair, Hamburg, N.Y. Details to be available soon.



You are the Center of Our World

LAREDO

"Laredo is a Lebanon Area Fair crowd favorite."
George Youngs,
Lebanon Area Fair

A LAREDO show is an incredible blend of high-energy, modern country and classic country favorites.



After four years and hundreds of shows in Pennsylvania, Virginia, Maryland and West Virginia, LAREDO has become one of central Pennsylvania's hottest and most in demand country bands!

They released their first CD in 2013 and are currently in the studio recording new material for their second release in the summer of 2015.



FOR BOOKING:
Jo King
(717) 546-0202
joritak@gmail.com



Stineman Ribbon Company



**High Quality Awards
Every Customer
Every Time**



Check Out Our New Website:
stinemanribbon.com

Toll Free: (800) 346-9294 www.stinemanribbon.com
Fax: (814) 495-9460 Sales@stinemanribbon.com
128 Ribbon Lane, South Fork, PA 15956
(814) 495-4686

DENNIE HUBER



**BALLOON
ARTIST**



MAGICIAN

A Fun Show for the Entire Family

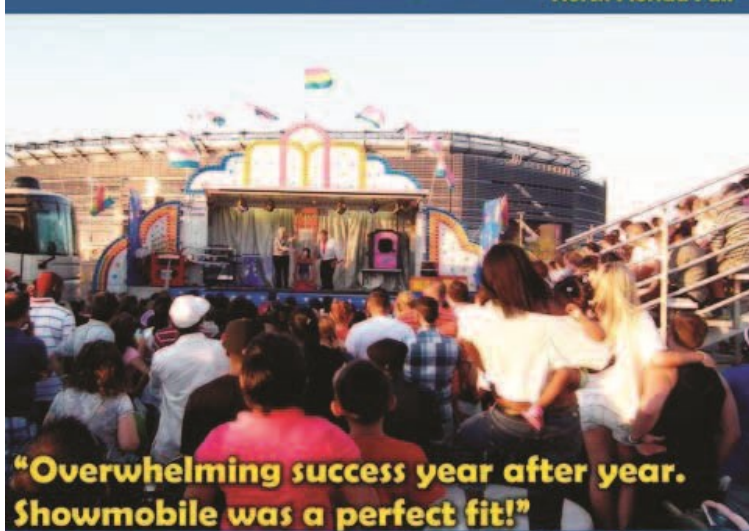
Dennie Huber

814-942-2516 • 814-937-4754
www.denniehuber.com
2547 Union Avenue • Altoona, PA 16602

Audiences love The Belmont Magic Show

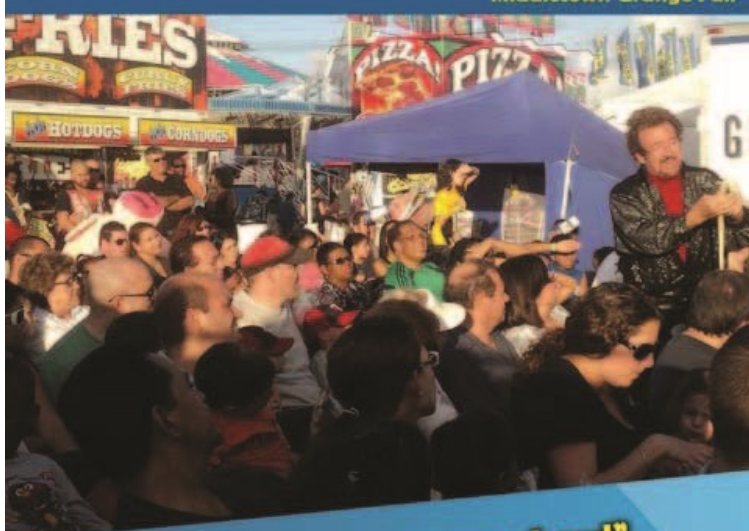
**"Crowds loved the show.
Always a full house!"**

North Florida Fair



**"Overwhelming success year after year.
Showmobile was a perfect fit!"**

Middletown Grange Fair



"Big Hit! Big crowds at every show!"

Greater Gulf State Fair

"Glowingly positive comments!"

Broward County Youth Fair

Belmont Magic & Illusions

"Award Winning Showmanship"

belmontmagic@verizon.net — (609) 206-5244



Saffire[®]

EVENTS

SEE WHY OVER 150 EVENTS, VENUES
AND DESTINATIONS TRUST SAFFIRE FOR
BEAUTIFUL, INTERACTIVE WEBSITES
THEY MANAGE THEMSELVES!

“ Saffire Events' software being tailor-made for fairs made it exceptionally easy to organize and present material for our website. The mobile site format was also something that we definitely needed. Knowing that Saffire Events constantly updates their software convinced us that this was an investment we wanted to make. Working with Saffire Events has been phenomenal—not only is their product outstanding, but their employees are incredible! ”

Sue Hill - West End Fair, Gilbert, PA

CONTACT US TODAY! 512.430.1123

WWW.SAFFIREEVENTS.COM INFO@SAFFIREEVENTS.COM

@saffireevents f Saffire Events p saffireevents

Milliron & Goodman

GOVERNMENT RELATIONS LLC

The 2014 General Election took place a month ago and the results were riveting. Democratic candidate for Governor, Tom Wolf defeated Governor Tom Corbett. I am sure I am not alone in the many thanks our Association has for Governor Corbett. His leadership was solid for Pennsylvania fairs. We also look forward to working with the next Governor of the Commonwealth. Governor-elect Wolf is from York County and has a rich knowledge of what fairs mean to York and the Commonwealth. Over the next few months, the PSACF and our firm will do its best to make sure our message carries forward with the Wolf Administration. Congratulations Governor-elect Wolf!

Also making history, the Republicans in the Commonwealth's House of Representatives and Senate increased their majorities. Senate Republicans picked up 3 seats making their majority 30 to 20. House Republicans picked up 8 additional seats making their majority 119 to 84 - the largest majority held by any party in the General Assembly in over 60 years. Fairs have always been and will continue to be bi-partisan. Our fairs entertain Democrats, Republicans and all facets of the political environment! Nonetheless, it is important to know who we will be working with to fight for our budget request.

The "elections" were not over on November 4th. Caucus leadership elections for both the House and Senate occurred in November too. They are meant to decide who would lead each caucus during the upcoming two year legislative Session. Major changes were made to both Republican caucuses. In the Senate, Senator Jake Corman (R-Centre) became the new Senate Majority Leader, Senator John Gordner (R-Columbia) was elected Whip, and Senator Pat Browne (R-Lehigh) was elected Appropriations Committee Chair. In the House Rep. Mike Turzai (R-Allegheny) was elected to serve as Speaker of the House, replacing Rep. Sam Smith (R-Jefferson) who is retiring. Rep. Dave Reed (R-Indiana) was elected Majority Leader, Rep. Bryan Cutler (R-Lancaster) was elected to be Whip, Donna Oberlander (R-Clarion) and Rep. Kerry Benninghoff (R-Centre) were elected to serve as

Republican leaders too. Senate and House Democratic caucuses voted to elect primarily the same leadership officers, although, Senator Larry M. Farnese, Jr. (D-Philadelphia) did replace Senator Tina Tartaglione (D-Philadelphia) as Caucus Secretary. Likewise, Rep. Rosita Youngblood (D-Philadelphia) replaced Rep. Ron G. Waters (D-Philadelphia) as Caucus Secretary.

*a full listing of all officer changes can be viewed at www.millirongoodman.com

What does this mean for PSACF in the 2015-16 Session? Education and Grassroots will be the key to PSACF to have another fruitful and successful Session. We have a lot of new members and members that are in new roles that we have to educate. That means you and I have to spend some time over the coming months educating and reinforcing what Pennsylvania fairs mean to the Commonwealth. It's not just entertainment, its jobs. It's not just rides, its agriculture education. It's not just popcorn and dollars, its smiles and memories. You're the expert, help make Representatives and Senators know just a bit more to ensure the future of Pennsylvania fairs.

Milliron & Goodman is looking forward to working with you to educate the new administration, new leadership officers, and the freshman legislators on the benefits and history of Pennsylvania's fairs. It is a big part of our strategy to ensure that our fairs are not forgotten in the 2015 budget. It will be a very difficult budget, therefore more than ever, get to know your Representatives. Make sure they keep fairs in mind during budget negotiations. And, let our office know after you have had conversations. See you at the 103rd PSACF Convention.

If you would like to learn more about the upcoming legislative Session year, please feel free to contact our office by dialing 717.232.5322. Our firm has an open door policy; do not hesitate to use it.

Andy

Andrew Goodman
Partner

Milliron & Goodman, LLC
Government Relations

200 North 3rd St - Suite 1500
Harrisburg, PA 17101
O 717.232.5322
C 717.575.6863

DOES YOUR

LOOK LIKE

FAIR



THIS

IF NOT...OUR AWARD WINNING TEAM CAN HELP!



VARIETY ATTRACTIONS

VARIETYATTRACTIONS.COM



740-453-0394

Update from The Zones



Zone One—Sam Zaffuto

Our fall zone meeting was held on Friday October 24 at Scrubgrass Grange. We were honored to have Secretary of Agriculture; George Greig and his wife Christine join us for our meeting. Secretary Greig updated our fairs on some of the activities of the Department of Agriculture as they relate to fairs.

John Blaney, our president and Dr. David Reese, our vice president updated everyone on the state association and discussed the upcoming convention in January.

John recognized Emily Housler from McKean County Fair as one of six recipients of the Msgr. John W. Mignot scholarship for this year. Emily was the McKean County Fair Queen and has been a very active participant in her fair.

Boots Hetherington, special advisor to Governor Corbett for Agriculture and fair fund administrator, was with us and shared information on his fair visits throughout fair season. He discussed fair funding and capital grants. He encouraged all fairs to file their fair fund applications well before the November 15 deadline.

One of zone one's directors, John Berne, is president of the Queen board. John discussed the Queen program and shared with all present what to expect at the convention with the Fair Queen program.

A fair visitation summary was presented. Twenty-nine of zone one fairs were visited this year by our zone directors. The fair visitation summaries from all zones will be found on the fair association website.

According to our bylaws, six representatives to the Executive Committee are to be elected in the even numbered years. An election of directors was held during our meeting. All six incumbent directors were reelected. Zone One will be represented by the following directors for 2015-2016: John Berne from McKean County Fair, Sherman Allen from Crawford County Fair, Jeanne Miller from Albion Fair, Dave Hallstrom from Clearfield County Fair, John McMullen from Indiana County Fair, and Sam Zaffuto from Sykesville Ag & Youth Fair.

The Zone One Junior Fair Person Award was presented by Sherman Allen to Emily Housler from McKean County Fair. Emily has been volunteering at the McKean County Fair since she was five years old. Some of the projects she has assisted with include painting, putting up signs, cleaning barns, planting flowers, and distributing fair promotional materials. In addition, she was chosen as the McKean County Fair Queen. Congratulations, Emily.

Ed Nehrig from Indiana County Fair was the recipient of the Zone One Person of the Year for 2014. Ed has been very active with the Indiana County Fair and the agricultural community for many years. He was first elected to the Indiana County Fair Board in 1979, has served as President and Secretary of their Board and is now their Fair Manager. Ed has contributed many long hours to make the Indiana County Fair a success. Congratulations, Ed, on a well-deserved honor.

We hope to see all fairs at the PSACF Convention in Hershey in January



Zone I Awards

Left Ed Nehrig and John



Left Sherman Allen and Emily Housler



Zone Two—Rodman Ralston

The fall zone meeting was held on Saturday October 25 at the Bloomsburg Fair grounds. Updates for the Association was presented by President John Blaney and Vice-President Dr. David Reese. Boots Hetherington, special advisor to the governor updated us on his fair visits and fair funding and capital grants.

Ben Engel from Lycoming County Fair received the Junior Fair Person Award. Dr. David Reese received the Fair Person of the year award.

Election of directors took place with the following results: Roger Dirlam, Judy Kmetz, Rodman Ralston, Dr. David Reese, William Ritzman, and George Witherite.

Looking forward to seeing you at the Convention at Hershey in January.

See "Zones" next page



Zone II Awards

Left John and Ben Engel



Zone III Awards

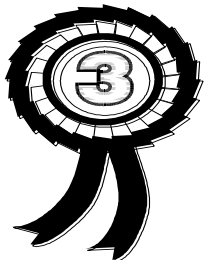
Left John and Julia Romesberg Junior Fair Person



Left John and Dr. Reese's Family



Left John and John Holbert Fair Person



Zone Three-Debbie Stephenson

Another fair season has ended and we hope everyone had a great one! If you didn't get a chance to make it to the Zone 3

Fall meeting, we will give you an update. It was held at Hollidaysburg and President John Blaney presided over the meeting and told about Communications, Table Topics and Queen Contest. Secretary Harry Reffner gave updates on convention with all the dates you need to know about -Convention rooms, meals, and our expenses. Boots Hetherington spoke regarding reimbursements and reminded us of the due date. We also had our election of directors and they are as follows: Harry Reffner, Craig Lash, Jim Davis, Debbie Stephenson, Tom Murray of Mountain Area Fair and Jeff Romesburg of Somerset Fair. A special thanks for all the door prizes and a wonderful meal.

Please check the web site for the announcement of the Spring Zone Meeting date and we will see you at the 2015 Convention! Happy Holidays to All!



Zone Four—Dr. Sally Nolt

The Fall Zone 4 Meeting was October 22, 2014 at Shady Maple Smorgasbord, East Earl. Thank you to Karen Dobson for handling the reservations.

The Zone 4 Zone Person of the Year Award for 2014 was presented to Luke Bruckhart, Manheim Community Farm Show (55 years) and PSACF Director (14 years). I would like to personally thank him for his many years of dedication to the Manheim Community Farm Show, PSACF, agriculture and the Fair Industry. Congratulations and thank you Luke for jobs well done!

The Jr. Fair Person of the Year Award for 2014 was presented to Matthew T. Swartz, III of the Elizabethtown Fair. Matthew has worked on night crew and as needed during the Fair and throughout the year. He designed and constructed a barrel train station for the Fair as his Eagle Scout Project. Thank you for your service and congratulations Matthew!

Directors elected to the PSACF Board from Zone 4, in addition to myself, were Kevin Bieber, Luke Bruckhart, Karen Dobson, Martha Ebersole, and Susan Hahn. Congratulations to each of you! Karen Dobson will serve as secretary-treasurer. In addition, Karen Dobson was re-elected to represent Zone 4 on the State Fair Queen Committee.

See "Zones" next page

From "Zones" previous page

Continue to keep in touch with your legislators. Thank them for their support of Fairs and agriculture.

Please mark your calendars now for the spring zone meeting. The spring meeting will be at Shady Maple Smorgasbord, East Earl on April 22, 2015. For reservations contact Karen Dobson.

Congratulations to all completed fairs for another successful fair season and I hope to see you all at the PSACF Convention in Hershey in January! If anyone has trouble with room reservations please call me at 717-367-7256 or 717-808-1397 or e-mail sknolt@comcast.net.



Zone 4 Left Dr. Sally Nolt, Luke Bruckhart



Left Karen Dobson, Matthew T. Swartz, III

IN REMEMBRANCE



William R. Ritzman, 73, entered into eternal rest on Tuesday, December 9, 2014 at the Harrisburg Hospital. He was very active in the communities of Perry as well as Juniata County. He had worked for Regester Chevrolet since 1964 and received the Legion of Leaders Award, the highest distinction from Chevrolet. He also received numerous honors from Port Royal Speedway and was very dedicated to the track. He had served as president of the Juniata County Fair and as a director of PSACF from zone 2.



Sarah Jane Long Irvin of Sinking Valley died unexpectedly Friday, December 12, 2014 at UPMC Altoona. She had served as the coordinator of the PA State Fair Queen program and chaperone for PA Fair Queens for 9 years and had been the secretary of the Sinking Valley Fair for the past 28 years. She had attended every convention of the Pennsylvania State Association of County Fairs since 1977.



All Eyes on PA's State Fair

Another fair season is in the books and the 99th PA Farm Show is upon us. Baking contest winners at our 109 local fairs have earned berths at the state PA

Preferred™ chocolate cake and cookie, brownie or snack bar competitions as well as the angel food cake and apple pie contests, sponsored by Pennsylvania egg producers and apple growers, respectively. Others will also bring their best products representing every fair department to compete and also to showcase agriculture – our state's top industry – to the public. Fair volunteers will help with these competitions. Without every exhibitor and volunteer the Farm Show would never be possible – thank you.

Safety Poster Contest Highlights Handwashing

Judges were impressed with the creativity and range of interpretations of this year's safety poster contest theme: proper handwashing for food vendors, livestock handlers and fair visitors.

62 children represented 28 fairs at the state level, encouraging proper hand washing techniques and timing to help everyone have a safe and pleasant experience at the fair. I thank all of the fairs who sponsored local competitions and sent their winners on to the Farm Show contest. These nine were chosen as this year's winners.

Ages 8-11:

- 1st – Zoe Sweet, Douglassville, Oley Valley Comm. Fair
- 2nd – Meagan Wheeler, Cresson, Cambria Co. Fair
- 3rd – Naomi Brown, Forksville, Sullivan Co. Fair

Ages 12-14:

- 1st – Clair Sirofchuck, Ligonier, Westmoreland Co. Fair
- 2nd – Shane Nihart, Colver, Cambria Co. Fair
- 3rd – Hannah Kelly, Manheim, Manheim Comm. Farm Show

Ages 15-18:

- 1st – Michael Wentz, Nicholson, Centre Co. Grange Fair
- 2nd – Karlle Seipele, Windsor, York Fair
- 3rd – Tiffany Davis, Josephine, Indiana County Fair

They will receive a ribbon and premium check at the Farm Show Main Hall on Wed., Jan. 14, at 5 p.m. at the fair safety poster display near the Showmen's Carousel.

Fairs Continue Pa Preferred™ Product Displays

The PA Preferred Products Display Competition continues to be popular with fairs, and remains a great way to support and educate consumers about the official brand of products made and grown in Pennsylvania. Congratulations to this year's winners: 1st – Harford Fair, 2nd – Schuylkill Co. Fair, and 3rd – Huntingdon Co. Fair.

The three displays will be recreated at the Farm Show in the Expo Hall adjacent to the Today's Agriculture display.

Thank you to all the fairs that participated. In addition to the visitors to your fair who identified products made here in Pennsylvania, more than 500,000 Farm Show visitors will spot PA Preferred products. Plaques and premium checks will be presented on Thursday evening during the PSACF Banquet at the Hershey Convention Center.

Fair Advisory Board Approves Funding Plans

Secretary Greig and his Fair Advisory Board adopted the annual plan for distributing fair funds. Thanks to Gov. Tom Corbett, Lt. Gov. Jim Cawley, and the state General Assembly, our 109 agricultural fairs and other program stakeholders will receive 100 percent of their eligible requested funding for the second straight year.

Following last year's capital improvement project success, 68 fairs this year submitted 120 project applications. The committee decided to fund one top-priority project for each of the 68 fairs by allotting an equal percentage of fair funds for each project. If any fairs choose not to move forward with their project, the funds will be redistributed to the remaining participants. Also, thank you to the two Pennsylvania harness racing associations for generously providing operational and purse funding for our sixteen harness racing fairs, freeing surplus funds to be dedicated to capital improvements projects to enhance visitor and exhibitor experiences.

Outstanding Fair Ambassador Awards

84 deserving fair volunteers received an Outstanding Fair Ambassador Award from Sec. Greig this fair season. It continues to be one of the most personally rewarding programs that I have ever had the privilege to be involved with. The genuine humility and emotion displayed during each recognition will never get old to me. Think ahead to 2015 – it's never too early to come up with a nominee or, better yet, a list of potential nominees.

Fair Fund Training Returns to PSACF Convention

Michelle Worden and I will be conducting the PA Fair Fund Reimbursement roundtable Friday of the fair convention from 12:30-2 p.m. No matter your experience, bring your questions and suggestions to share with me, Michelle, and fellow fair secretaries.

I hope to see you at the Farm Show starting with the fantastic PA Preferred reception on Friday, Jan. 9, at 5:30 p.m. in the PA Preferred Banquet Hall. It will be packed with PA Preferred entrees, sides, drinks, and desserts. I strongly suggest you join us.

You won't be disappointed.

J. R. Sellman Co., LLC

Phone: 610-337-0130

Fax: 610-337-0131

jrsellmanco@verizon.net

Equipment Specialists

Phone: 610-337-0130

Fax: 610-337-0131

jrsellmanco@verizon.net

P.O. BOX 2527

KING OF PRUSSIA, PA 19406

SINCE 1961

SALES

INSTALLATION

SERVICE

SINCE 1961

**PERMANENT GRANDSTANDS • PORTABLE BLEACHERS
ALUMINUM REPLACEMENT PLANKING**

**ALUMINUM BENCHES • ALUMINUM TABLES
ALUMINUM PORTABLE STAGES**

**GYMNASIUM SEATING • FOLDING PARTITIONS
ROLL-UP DIVIDERS • BASKETBALL BACKSTOPS**

**GYMNASIUM AND ATHLETIC EQUIPMENT
WRESTLING MAT STORAGE SYSTEMS**



"Specializing in Quality"



WEST END FAIR, GILBERT, PA