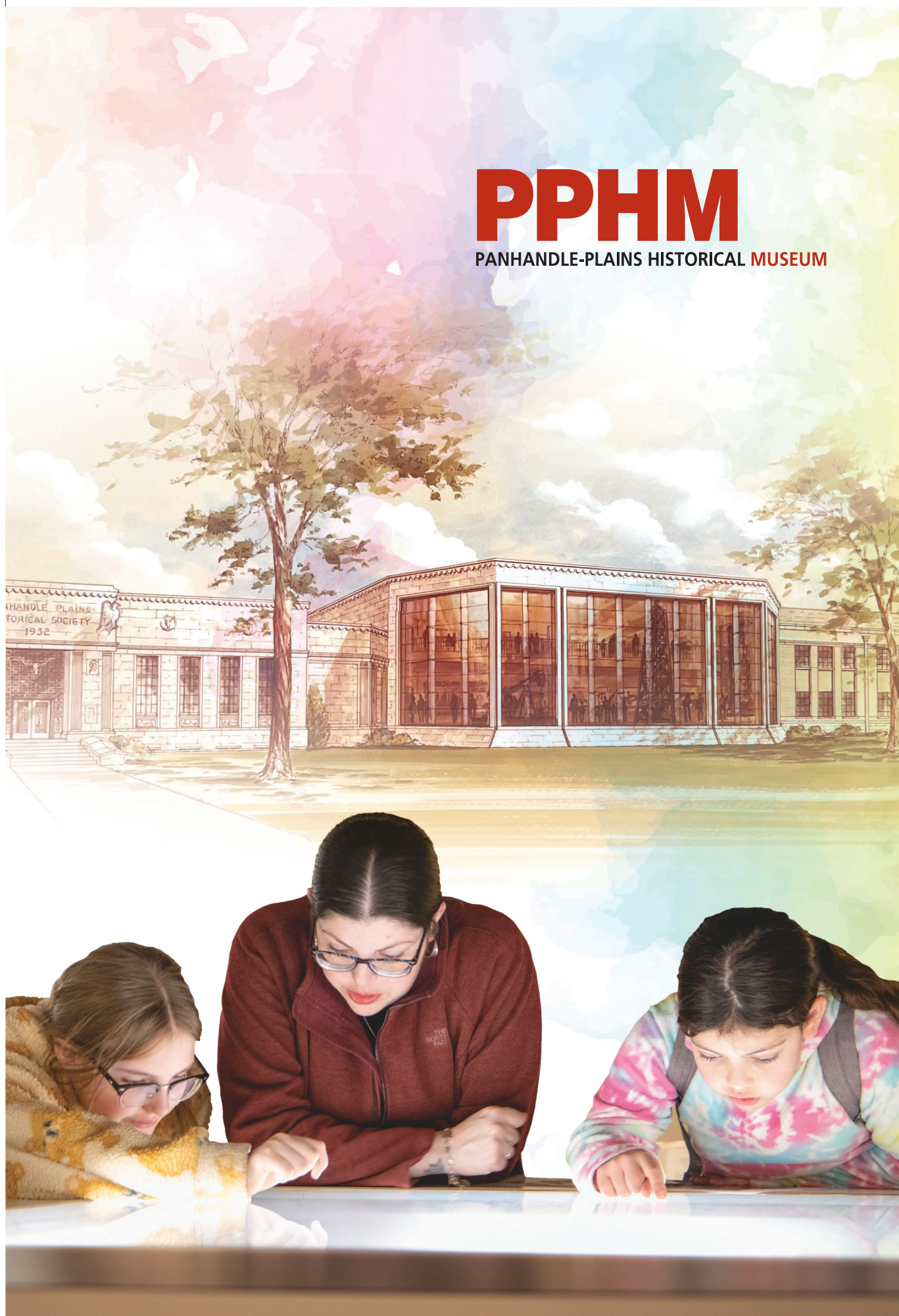


PPHM

PANHANDLE-PLAINS HISTORICAL MUSEUM



ANNUAL REPORT 2022 - 2023

Director's Note



Panhandle-Plains Historical Museum is widely considered one of the State's most important and outstanding collections. We care for historical artifacts and material culture both nationally and internationally of exceptional importance. Built in 1933, PPHM has long been both a great public cultural asset and an extraordinary scholarly resource—local, regional, national, and global. The museum is also a place brimming with potential; we must now build on past achievements, bringing focus to the collection of the museum towards transformational encounters for the patron.

All our work begins with the people who have an encounter with the PPHM collection. Through our exhibits and educational programs, to our work of historical conservation and public fundraising events—PPHM provides opportunities to discover the surprising history and culture of one of the most indomitable regions on earth. PPHM has other extraordinary assets: our remarkable record of innovative public engagement, fantastic research and speaking events, and the sheer importance of the artifacts of the collection itself. The passionate loyalty of the museum's current visitors matches the energy and talent of our expert and committed staff. We are likewise proud of being the "front doorstep," as it were, for West Texas A&M University and the City of Canyon, and all the benefits this location offers. These features, and many more, make PPHM so special for so many and will continue to be the catalyst for future initiatives.

PPHM is poised this coming year to deepen relationships within the community and throughout the State of Texas. Serving a 25,000 square mile radius demands that PPHM seek innovation in its offerings to the community, both here and abroad. By fully unifying collaborative activity with those we serve, as well as seeking to upgrade exhibit space and engage more diverse audiences, PPHM will play an ever more crucial role in "promoting the stories of this region in order to build community, enhance learning, and nurture creativity."

As ever, it is an honor to pursue this mission on behalf of the membership of the Panhandle-Plains Historical Society.

Stewarding the mission of PPHM requires the commitment of many more people like you, who understand the importance of the museum. PPHM's collections, combined with its capacity to move knowledge forward, will continue to touch the hearts and minds of the many individuals who make their way to the Panhandle of Texas and explore its rich history. And on behalf of the PPHS Board of Trustees and the staff members of PPHM, my sincerest thanks to everyone who has contributed to strengthening the museum over the past year.

Sincerely,

Andrew Hay, PhD
Executive Director

Mission, Vision & Values



MISSION

PPHM promotes the stories of this region in order to build community, enhance learning, and nurture creativity.

VISION

As a leading institution and a university museum, PPHM offers dynamic experiences that illuminate the power and relevance of the history of this region, state, and beyond. PPHM shares with a diverse public and WTAMU its distinct collection from all periods and parts of the world, generating new ideas, while serving as an educational catalyst for the community.

WHO WE ARE

WE ARE enthusiastic about introducing people to the stories and history of this region.

WE ARE excited about the universal impact stories of this region can have in their ability to unite diverse cultures and people.

WE SEEK to make the story of this region accessible to every life stage, culture, personality, experience, economic level, and age.

WE ENCOURAGE a coming-to-know for the first time, or in a new way, the history of this region.

OUR VALUES

BE A GOOD ANCESTOR- Steward resources, time, thoughts, employment, and relationships—all for the sake of future generations.

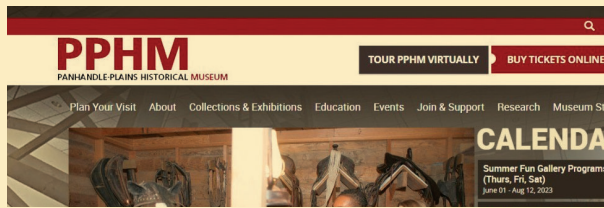
BELIEVE THE BEST- Challenges are opportunities waiting to be exploited; look for the good to be done in every circumstance.

CURATE THE MISSION- Be obsessed with placing the history and stories of this region and state in the hearts and minds of more and more people.

ACCELERATE INNOVATION- Future-proof the organization.

NEVER STOP LEARNING, LISTENING, AND SERVING - Avoid recycling problems; actively listen to those around you; seek opportunities to learn; serve the community.

PPHM by the Numbers



Website Visitors:

158,026



Store Sales: \$65,163.13

Total Admission: 44,826

Volunteer Hours:

2,845



Panhandle-Plains Historical Museum
17K likes • 18K followers

Followers on Social Media:

21,542

New Memberships:

59



Video Views on YouTube:

8,544



Researcher Visits:

545

PPHM

PANHANDLE-PLAINS HISTORICAL MUSEUM

Research Center
Library and Archives

Virtual Learning Attendees:

822



Students Attended an Outreach Program

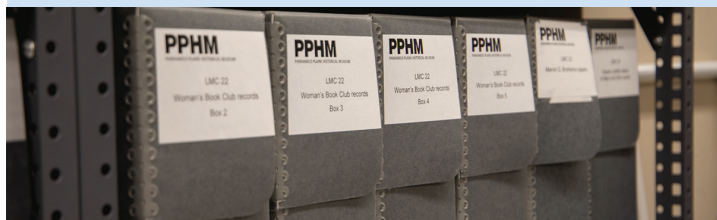
6,226



Media Stories Showcasing PPHM:

657





Manuscript Collections Processed:
73.55 linear feet

School
Children
Served:

21,610



Museum Volunteers:

191



Kids Attended
Summer
Camps

69



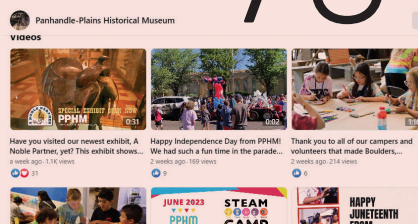
Districts Served:

62



Videos Created
for Social
Media:

70



Special Event
Rentals:

45



Special Events:

40



WT Students
Attending PPHM

1,590



Educating Future Generations



The Education Department serves as the bridge to educating our young future leaders with the latest TEKS-based learning experiences. PPHM's Education Department has grown exponentially this year with a diverse group of over 21,106 students from K-12.

PPHM's Education department continued their contract with Nazareth and Canyon ISD. Our team has reached, 5,493 CISD Students and 62 school districts. We made an impact across the United States with 822 students joining our Virtual Learning programs.

Our (STEAM) Lab operated for a full academic year. This inviting space has enabled artifacts to come to life, scientific theories to be tested, and the creation of art masterpieces from our students from the Panhandle area.

Additionally, PPHM opened a STEAM based Maker Space where children can come with their families to read books about everything from dinosaurs to space exploration, invent new ideas on our Lego wall, or create themed crafts with our staff during Summer Programs.

We have added two new student assistants to our staff, as well as hosted two internship/externship opportunities to help aid in our current and future education initiatives.



Curatorial Projects

Counting Project

At the beginning of 2023, the curatorial staff and volunteers of PPHM completed the count of all artifacts, specimens, and records within our archival storage. Hundreds of volunteers and staff hours went into this project. Deciding how to pair artifacts or counting multiple parts and pieces was a big obstacle. This project is important to the future of artifact storage capacity, overall management, planning engaging exhibits, and rediscovering the culture and variety in our collection.



NAGPRA

In April, the Panhandle-Plains Historical Museum held an in-person consultation with Hah-Tee Delgado, the director of the Comanche Nation Native American Graves Protection and Repatriation Act. The consultation was over the 137 Comanche-affiliated objects in the Panhandle-Plains Historical Society's ethnology collection. Archaeology staff oversaw the organization and successful completion of this important intergovernmental process.



< Begay, Harrison. (no date).
Picking Corn [Haskay Yahne
Yah] [Gouache on mar board].
Panhandle-Plains Historical
Museum. Canyon, Texas.

Google Arts and Culture: Indigenous Americas

Google Arts and Culture is Google's online archive of high-resolution images of artworks and cultural artifacts from cultural organizations around the world.

The Panhandle-Plains Historical Museum was asked to participate in the Google Arts and Culture: Indigenous Americas. This is a growing collection of Indigenous art and culture from all over the Americas.

"Participation in the project was important because it makes works from the museum accessible to people across the world, but it also highlights the artistic contributions of Indigenous artists from throughout the southwest. The artists featured are some of the most significant artists of a generation and also have a shared history that includes the Santa Fe Indian School and are held in the collections of important museums such as the Smithsonian American Art Museum, Gilcrease Museum and Philbrook Museum of Art."

- Deana Craighead, Curator of Art

The Story of Art in America

The Story of Art in America (SOAIA) is a docuseries on Amazon Prime that highlights local artists around the country. The third season of SOAIA focuses specifically on nine Texas cities, including Canyon.

When the producer originally reached out to us, they specifically wanted to visit Canyon due to the history of art in the city and Georgia O'Keeffe's *Red Landscape*, which was inspired by her time as a teacher in town. At the beginning of filming, Marketing Director Stephanie Price did a walkthrough of *Pioneer Hall*, giving us the history of the museum and the Panhandle-Plains Historical Society. We explored multiple galleries, showing that the Panhandle has a diverse history of art through PPHM's collection.

The SOAIA producer also chose Andrew Miller, PPHM's Exhibitions Specialist, as an artist to highlight on the show. Before we went to Andrew's studio, he took us to the mural he painted in *The Panhandle Petroleum Story* exhibit. Andrew was one of four artists that will be featured on the show.

Be sure to catch the Canyon episode of *The Story of Art in America* on Amazon Prime in the spring of 2024!

- Megan Nelson, Director of Communications and
Community Engagement for the City of Canyon



Fundraising Events

Bella Notte A VENEZIA

A BEAUTIFUL NIGHT IN VENICE

This year's gala was truly a "Bella Notte." Pioneer Hall and the Derrick Room were carefully decorated with vibrant flowers and place settings to give the illusion to guests that they had stepped in Italy for the evening. With a Venice theme, Two Knives perfectly curated appetizers as the night began. The 3-course meal was divine. There were many extraordinary objects up for bid during the auction and the night ended with guests on the dance floor as the *Wonderfuls Band* from Dallas performed.

There were 254 guests in attendance that made the evening filled with laughter, conversation, and life. Thank you to our sponsors for making this night a true Bella Notte helping us raise \$73,813.00.



Tidings OF THE TREES

Tidings of the Trees welcomed its second year of holiday cheer! Our wonderful VIP guests enjoyed festive food stations, a decorative bar, and the chance to bid on marvelous trees in the auction. Designed by talented local artists, and donated by local businesses were eleven one-of-a-kind trees. Tidings of the Trees was especially sweet as we celebrated Suzanne Wheelers final year as Chairwoman.

There were 215 guests in attendance. Thank you to all of the donors, sponsors, and guests for making this night special and raising \$82,000 towards our mission.



Engaging Programming

Hispanic Heritage Month – October

PPHM celebrated Hispanic Heritage Month by partnering with Telemundo, Atmos, and Las Parrilladas Norteñas to provide one free Saturday admission during the month of October.

We also collaborated with West Texas A&M University's Distinguished Lecture Series and hosted Dr. Rachel González-Martin from the University of Texas at Austin. Dr. González-Martin spoke to 71 community members and WT students gathered in Hazlewood Lecture Hall.



Dino Day – October

Dino crafts and dinosaur dance flooded our museum in celebration of Dino Day. A total of 1,828 visitors explored PPHM to move like dinosaurs, see live animals from the Wild Hanbury's critter collection, and meet an archaeologist in recognition of Archaeology Month!



Christmas Open House – December

The museum was filled with holiday spirit for our annual Christmas Open House. Exhibits were filled with the Christmas songs from children's choirs, Santa and Mrs. Claus greeted kids in our snowy Hazlewood Lecture Hall. Our continued efforts from our wonderful volunteers, staff, and committee, helped welcome 3,696 people through our doors and donated 14,456 meals to the Food Bank.



Aaron Mahnke

Presents: *The World of Lore* – April

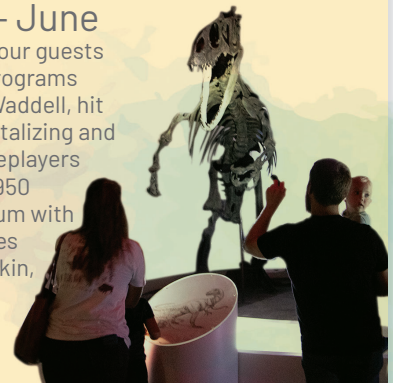
PPHM hosted Aaron Mahnke, the creator, writer, and producer of the critically acclaimed storytelling podcast, *Lore*. 275 community members attended Mahnke's discussion about the importance of folk tales and legends in culture and society.

We partnered with West Texas A&M University's Distinguished Lecture Series to close out our year of fairytales!



Night at PPHM – June

Ace the Allosaurus met our guests with a big roar! Our new programs director, Bailee Rexrode Waddell, hit the ground running by revitalizing and adding more historical roleplayers throughout the museum. 950 visitors roamed the museum with the flashlight to see Charles Goodnight, George McJunkin, and Rutherford Brothers tell their story in Texas Panhandle history.



An Evening with the Comanche Nation – July

The Panhandle-Plains Historical Museum partnered with the Great Comanche Nation, TEXAS Outdoor Musical, and Palo Duro State Park for a special evening celebrating the cultural history of Texas State Parks and its 100th year anniversary. Our museum displayed Quanah Parker's headdress, Comanche and State Park artifacts. This was followed by a Comanche performance and blessing.

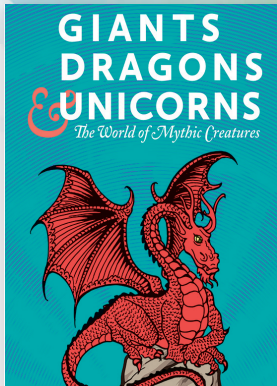


Summer Programs – June - August

PPHM hosted 384 children in our story time and crafts around the museum. This is our second year to partner with the Canyon Area Library. Their staff joined us for storytelling every Thursday with a book and fun craft afterwards!



Special Exhibitions



Giants, Dragons and Unicorns: The World of Mythic Creatures

September 2022 – March 2023

Organized by the American Museum of Natural History in New York, *Giants, Dragons & Unicorns: The World of Mythic Creatures* featured unique cultural objects to highlight the surprising similarities and differences in the ways people around the world envision and depict mythic creatures.

Giants, Dragons & Unicorns: The World of Mythic Creatures is organized by the American Museum of Natural History, New York (amnh.org).

On the Edge of the Plains



On The Edge of the Plains February 2023 – January 2024

For over one hundred years, artists have drawn, painted, and photographed Palo Duro Canyon. This exhibition is a look into the ways in which artists from the PPHM Permanent Collection have expressed the unique wonder and beauty of the most spectacular landscape of our region. This exhibition is our way to celebrate 100 years of Texas State Parks.

Kincaid, Clarence. (n.d.). *Untitled [the Lighthouse, Palo Duro Canyon]*. [oil on panel]. Panhandle-Plains Historical Museum, Canyon, Texas, United States.

High Fashion TO THE HIGH PLAINS

High Fashion to the High Plains
March 2023 – Spring 2024



The exhibit features the variety of fashion garments that have made their way to the Texas Panhandle, and a look into who owned them. From the first fashion label, who was Charles Frederick Worth and a garment that could only be purchased in France, to smaller designers carried in Texas retailers; PPHMs textiles all tell a story. This exhibit also features the first loan from the Harrington House Society.

Lots of Love, Gisella May 2023– January 2024

Born in Austria at the turn of the 19th century, Gisella Loeffler immigrated to the United States and eventually settled in the creative environment of Taos, New Mexico. Active in the Taos artist community, yet often overlooked by history, Loeffler combined Indigenous and Hispanic motifs with her native Austro-Hungarian folk art traditions with whimsy and subtle sophistication.

Lots of love - Gisella



PPHM Shop & Maker Space May 2023 – 2024

The new PPHM Shop & Maker Space welcomes kids and their family to a creative STEAM-based experience. Our young patrons can build on our Lego wall, put on their very own puppet show, create themed crafts and read fun educational books.

West Texas A&M University Amarillo Center Exhibit June 2023-2024

Our curators and education team created their own display in the West Texas A&M University Amarillo Center. These cases highlight the culture & traditions of WTAMU and our rich Panhandle Culture.

"I chose to feature the Northwest Texas Hospital School of Nursing because the current nursing program at West Texas A&M University is based out of the Amarillo Center. My hope is for current nursing students to be inspired by the rich history of nursing education in this region. This is a unique way to bring history into a modern application."

– Jenni Opalinski, Curator of History



A Noble Partner June 2023- April 2024

Horses on the Panhandle-Plains have been a part of our changing landscape for centuries and have provided companionship, workmanship and a relationship wholly unlike any other domesticated animal. *A Noble Partner* uses artifacts from the PPHM collection to examine how the horse and human work together to accomplish their goals and how these relationships have shaped both man and horse.

James Coverdale assisted with *A Noble Partner*. Coverdale, an enrolled member of the Kiowa Tribe (#K12522), painted a model horse to represent a war pony. He painted it by hand, as it would be done in the past, and employed colors and symbols that are of personal and cultural significance.



Digital Exhibits

Over the course of this year, the Collections Department has been diligently continuing their efforts to digitize the collection. As temporary exhibits have closed, the artifacts have been photographed to provide digital versions of the exhibits on the museum website, this way everyone can experience our exhibits anytime, anywhere. Artifacts from *Objects of Enchantment* and *Giants, Dragons & Unicorns: The World of Mythic Creatures* are part of those digitized.

During our other collections projects, such as inventories and the collection count, we have been taking as many pictures as we can of the artifacts to further develop our database.

To view our digital exhibitions, visit panhandleplains.org.



Community Praise and Awards

PPHM is a longstanding award winning history museum. These are the awards given to the museum in this fiscal year.

Awards:

- 2023 True West Top 10 Western Art Museum Award Winner
- 2023 True West Best Western Museum Top 10
- Amarillo Advertising Awards - One Enchanted Evening Invitation, Gold
- Amarillo Advertising Awards - Education Hallway Redesign, Honorable Mention
- Amarillo Advertising Awards - Quinceañera Traditions, Mosaic Award - Integrated Advertising Campaigns
- Best of Amarillo - Best Museum
- CILC Pinnacle Award - PPHM STEAM Lab - Distance Learning
- Canyon News- Best Museum
- Los Barrios 2022 Business Community Service Award Winner



Community Praise:

This is a very large museum that covers many historical topics—from natural history to the human history of the area. The displays are well thought out and well presented. Overall fascinating. We spent 3 hours here but could have stayed another 1-2 hours if we had the time.

-Faye, Visitor



The Panhandle-Plains Museum is beautifully curated and has a little bit of everything! This is a true historical collection of the area, from fossils to great local art—including an original Georgia O’Keeffe. Definitely worth a visit! **–Kendra Park, Visitor**

Thank you so much for spending time with us and providing greater insight into the world of Archeology and how the museum works behind the scenes... We are excited to have been able to provide feedback on potential changes to the Palo Duro Canyon exhibit and other areas of the museum. **– Roxanne McGill, Visitor**

What a wonderful anniversary reception we enjoyed at PPHM. Every aspect of the reception planning went so smoothly because of the way you meticulously handled setting up the venue. I was so impressed with your assistant. She was helpful and possessed such a great set of people skills. Our guests were very complimentary regarding all of the wonderful people at PPHM. **– Larry and Pat Hammit, Visitor**

Thank you for contributing to the success of our program and the growth of our campers as we explored the PPHM during Camp Tatanka this summer! The kids especially enjoyed the interactive exhibits and activities in the STEAM Lab this year. We appreciate all you do and couldn’t have done it without you! **– Camp Tatanka Staff**



The party this weekend was above and beyond any expectations we have. Your staff was professional, helpful and made it enjoyable for ALL!

– Alyson Ries, Director of Advising, WTAMU

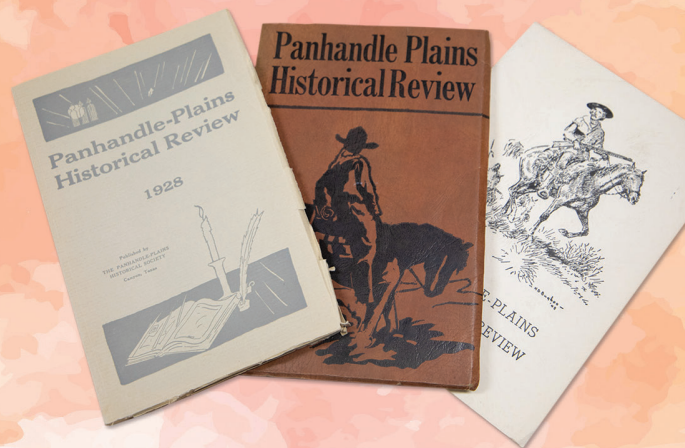


Interns and Research

PPHS Review:

The **Panhandle-Plains Historical Review** represents one of the longest running historical journals in Texas. The 93rd edition came out in 2022.

The PPHR is an important contribution to the history of the Panhandle, Texas, and the Southwest. Articles are well-written and well-documented. Recent articles portray the diversity of the Panhandle including women's suffrage in the Panhandle, the integration of West Texas State College, migration of immigrants from Mexico, and the establishment of Borger. The journal has proven to be an important resource in furthering knowledge of the region. -**Dr. Marty Kuhlman, The Jenny Lind Porter Professor of History**



Forgotten Frontera Oral History

Over the past two years, several interns from the Center for the Study of the American West (CSAW) are actively interviewing, recording, and transcribing stories from local Hispanic and other Latinx individuals and capturing their personal and family stories about growing up in the Panhandle region of Texas.

The Forgotten Frontera Oral History project is important to CSAW because we recognize that the Hispanic and Latinx influence on the area and its foundation in our local history continues to demonstrate that our region is one that is impacted by broad forces and is culturally unique. We believe that this is also important to the PPHM, as it is yet another facet of local history that needs to be documented, preserved, and shared with the public through the PPHM Research Center. -**Dr. Alex Hunt, CSAW Director**

Southwestern Public Service Company (SPS)

The PPHM Research Center hosted a CSAW intern working on the organization of the museum collection of Southwestern Public Service Company (SPS), predecessor to Xcel Energy, Inc. Since the project's start in 2019, CSAW interns have catalogued 35 boxes, digitalized 50 years of issues of the SPS employee newsletter *The Southwesterner*, and a CSAW intern began creating a detailed finding aid for the SPS collection. The SPS archives preserve the utility's institutional history and facilitate an understanding of the intertwined relationship between area growth and electric service.

-**Warren Stricker, Director Research Center**



Community Supporters

PPHM is grateful to these individuals for their service on our boards and community groups. Their leadership and guidance help the museum grow and head towards a very prosperous future.

PPHS Board of Trustess:

- Dr. Paul Matney President
- Ellen Jones President Elect
- Suzanne Wheeler Treasurer
- Joel Hogue Past President

Trustees:

- Jason Boyett
- Gayle Callahan
- Mike Collins
- Kathy Cornett
- Lance Garza
- Pat Hickman
- Dr. Jessica Mallard
- Gary Moore
- Lenny Sadler
- Whitneyrose Upchurch

Cultural Foundation of the Texas Panhandle

Board:

- Brendon Anthony
- Mark Bivins
- John W. Crain
- Dr. Andrew Hay
- J. Pat Hickman
- Joel Hogue
- Tim Leach
- Amy McLane
- Jerry Patterson
- Nancy Painter Paup
- Donald E. Powell
- Karen Price
- Rodney Ruthart
- Lionel Sosa
- S. Shawn Stephens
- Dr. Neil Terry
- Richard Ware
- Dr. Walter V. Wendler

PPHM Think Tank:

- Jim J. Brewer
- Molly Caviness
- Kathy Cornett
- Ed Dowdy
- Brad Hickman
- Gary Hinders
- Joel Hogue
- Ellen Jones
- Russell Lowery-Hart
- Dr. Jessica Mallard
- Dr. Paul Matney
- Patrick Miller
- Will Miller
- Kevin Nelson
- Scott Nelson
- Puff Niegos
- Alex O'Brien
- Joe Price
- Randy Ray
- Wes Reeves
- Kyle Sparkman
- Richard Walton
- Katharyn Wiegand



Staff

The museum has a talented staff of professionals and student workers from all over the country who come together to carry out the mission, vision and values of this organization.

Staff:

Administration

- Dr. Andrew Hay
- Heather Friemel
- Stephanie Price
- Buster Ratliff

PPHM Visitor Services

- Kristin Johnson
- Bailee Waddell

Curatorial

- Dr. Veronica Arias
- Deana Craighead
- Jenni Opalinski
- Miranda Bible

Education

- Sheridan Voigt
- Macayla Barnasevitch

Registrar & Collections

- Lori Holstrom
- Hagen Hobbs

Research Center

- Warren Stricker
- Renea Dautes

Marketing & Membership

- Anna Parsons
- Mark Sellers

Exhibits

- Micah Hanbury
- Seth Hanbury
- Andrew Miller

Student Workers:

- Leroy Aleman Front Desk
- Juan Aguinaga..... Front Desk
- Madilyn Ballew..... Front Desk
- Calli Bell Front Desk
- Mackenzie Bolton Marketing
- McKenzie Bonner..... Front Desk
- Brenna Campbell Archaeology
- Kami Drinnon..... Front Desk
- Bella Garza Front Desk
- Faith Harrison Front Desk
- Raegan Higgins Administration
- Josiah Kinsky Front Desk
- Haliegh Klaehn Archives
- Teareanee' Lockhart..... Front Desk
- Hannah McClure Front Desk
- Eryck Mendoza Front Desk
- Caitlynn O'Dell..... Front Desk
- Kendal Powell Marketing
- Joe Rabinowitz..... Front Desk
- Jamar Shaw Education
- Abby Stevens..... Education
- Nathan Stotts..... Front Desk
- Michaela Wegman Art
- Kenedy Wheeler Art



Panhandle-Plains Historical Society Finance Report to the Membership Annual Meeting – September 26, 2023

Total Assets

The total assets held by the Society at the end of August 31, 2023 were \$ 15,835,299

This is an unaudited figure and includes current operating and endowment accounts.

Brown, Graham & Company, an accounting firm located in Amarillo, Texas has audited the financial records of the Panhandle-Plains Historical Society for the past several years. In the Independent Auditor's opinion, the financial statements referred to present fairly the financial position of the Panhandle-Plains Historical Society. The past three years audited total assets as of August 31st are as follows:

FY 2020: \$13,758,166 FY 2021: \$16,000,250 FY 2022: \$14,655,404

Investments

Funds are held with the Texas A&M University System, Happy State Bank, and Amarillo National Bank. The asset allocations for investments held at the two banks are set by the finance committee of the PPHS. The asset allocation for all funds held at the Texas A&M University System is set by the Texas A&M University System Board of Regents.

Balances:

| | | |
|-----------------------------|-------------------------|-------------|
| Texas A&M University System | \$ 9,477,484.42 | 72% |
| Amarillo National Bank | \$ 2,240,006.16 | 17% |
| Happy State Bank | \$ 1,484,023.20 | 11% |
| Other | \$ 1,750.00 | |
| TOTAL | \$ 13,203,263.78 | 100% |

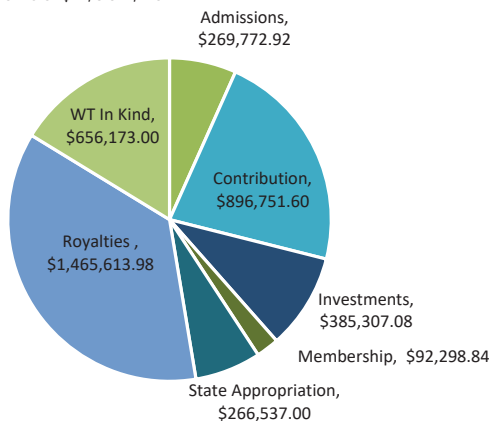
Operating Funds

Operating funds are held in accounts at Wells Fargo, Canyon (Unrestricted and Friends of Southwest Art) and Happy State Bank, Canyon (Research Center, Petroleum Wing, Temporarily Restricted and Capital Campaign).

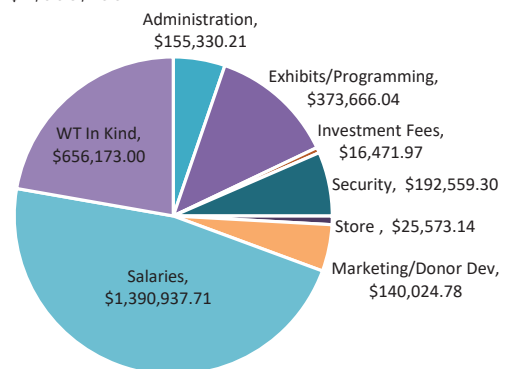
Operations

Another year of operations was successfully completed by PPHM on August 31, 2023. We are very thankful for our generous contributors, as well as arts and humanities groups from around the state and region that continue to show their support. Oil and gas royalties have maintained an increase over the last several years. The Society is grateful for the continued support from West Texas A&M University and we owe special recognition to our members, donors, and community for your ongoing engagement in PPHM.

Total Revenue \$4,032,454



Total Expenses \$2,950,736



2023 Net Ordinary Income: \$1,081,718

Our Generous Donors and Members

Thank you to all of those who support PPHM with their generous donations and memberships.

Dr. and Mrs. Malouf Abraham Jr.
Col. Beverly Abshire and LCDR Philip Abshire
Mr. Sterling K. Adams and Ms. Mary Bearden
Ms. Wynne Adams & Mr. Craig Adams
Ms. Melanie Alcon
Mrs. Linda Allen
Ms. Gina Alsop
Mr. Carl and Mrs. Nancy Altschwager
Amarillo Area Foundation
Amarillo National Bank
American Land Title, LLC
Mr. Gregory D. and Mrs. Denise Anderson
Mr. Jonathan Anderson
Mr. Mark B. and Mrs. Barbara D. Anderson
Mr. Ronald and Mrs. Nancy Anderson
Anna Belle Kritser II Foundation
Mr. Mac and Mrs. Lesly Annen
Dr. Veronica Arias
Mr. Guy Asbury
Mr. and Mrs. William A. Attebury
Austin College
Mrs. Katie Ave
Dr. T. Lindsay Baker
Ms. Marlies Ballengee
The Barfield
Barnes Jewelry
Mrs. Marcia and Mr. Marc C. Bateman
Mr. Steven and Mrs. Lorraine Beckham
Mr. and Mrs. Frank Bellizzi
Ms. Judy Bennet
Mrs. Peggy and Dr. Howard L. Berg
Mr. Hubert Bernet and Ms. Jeanette Novarina
Ms. Rebecca Berryhill
Ms. Miranda Bible
Dr. Peter and Dr. Gayle H. Bickers
Bickers Foundation
Mr. Mark E. and Mrs. Ellen Bivins
Black Fig Catering
BNY Mellon Trust of Delaware
Ms. Lynn Boitano
Dr. Richard and Mrs. D'Ann Bowers
Mr. Beaumont S. Boyce
Mr. William C. Boyce
Mr. Jason and Mrs. Aimee Boyett
Mr. Ray and Mrs. Ann Bradley
Mrs. Mary Ellen and Mr. Dwight Brandt
Mrs. Judy Brax
Mr. Phillip and Mrs. Suzanne Brent
Mr. Jim J. Brewer
Mr. P.K. Brian
Mr. W.H. Brian and Mrs. Carol Brian
Ms. Linda Brian
Mr. and Mrs. Bill Briscoe
Mr. Raymond and Mrs. Eileen Broadbent
Brown & Fortunato, PC
Brown, Graham & Company, P C
Mr. Dean and Mrs. Michelle Brown
Mr. Jim Brown and Mrs. Sharon Brown
Mr. Chris Bruckner
Mr. Brian and Mrs. Carol Bruckner
Bruckner Family Foundation
Mr. Dale and Mrs. Adair Buckner
Budweiser Amarillo
Mr. Andy and Mrs. Rita Burcham
Mr. and Mrs. Jason Burr
Bush Brothers & Company C/O Mr. Andrew Everett
Mrs. Janet and Mr. Steven Bush
Mr. W. H. and Mrs. Phyllis Butler
Ms. Sandra Butler
Mrs. Vicki Wilmarth and Mr. Rohn Butterfield
Mr. Rocky M. and Mrs. Deborah Cain
Ms. Gayle Callahan
Dr. James V. and Mrs. Leesa Wood Calvi
Dr. Dennis and Mrs. Carolyn Canon
Ms. Dianne Capell
Ms. Peggy Carr
Mr. Richard and Mrs. Mary Carter

Ms. Judy Carter
Mr. Larry and Mrs. Tamara Castagnetta
Mr. and Mrs. Trevor Caviness
Dr. Joseph C. Cepeda
Ms. Sue Chambers
Mr. Scott Chase
Ms. Stacey Chase
Mr. Jim and Mrs. Marilyn Childers
Ms. Leslie Chollet
Cinergy
City of Canyon
Mr. Winston and Mrs. Beatrice Clark
Mr. Ross and Mrs. Donna Clopton
Mr. Michael Collins
Colonial Dames of 17th Century Kerenhappuch
Norman Chapter
Mr. James R. and Mrs. Martha A. Conkling
Mr. J. Michael and Mrs. Kathleen L. Connor
Mr. Bryant Coon
Ms. Margarita Cooper
Mr. James Cornette
Mrs. Kathy and Mr. Steve Cornett
Mr. James Cosper and Mrs. Virginia Cosper
Courtney, Countiss, Brian, & Bailey, L.L.P.
Mr. Bill Countiss and Mrs. Mary Dee Countiss
Cox Subscriptions
Mr. Timothy and Ms. Lexa Craddock
Mr. Cliff and Mrs. Jo Craig
Ms. Deana Craighead
Ms. Janice Cranmer
Ms. Leslie Crawford
Dr. Kenneth A. and Mrs. Janet Crossland
Dr. Don T. Curtis
Mr. J. Daryl Curtis and Ms. Vickie Sharp
Darden Family Charitable Foundation
Ms. Renea Dautes
David D. & Nona S. Payne Foundation, Inc.
Mrs. Isabel and Mr. Walt Davis
Ms. Linda M. Davis
Mr. William and Mrs. Krystie Davis
Mr. Robbin and Mrs. Alice Dawson
Davy Knapp Photography
Deaf Smith Electric Coop Inc
Deaf Smith County Historical Society, Inc.
Ms. Bernadette DeBrango
Ms. Janet Dickson
Mrs. Elizabeth and Mr. David Dike
Ms. Elise Dodson
Mr. Jamie Dodson
Mr. Thomas Doneker
Dr. Kent Roberts and Ilene Roberts Balliett Foundation
Mr. David and Mrs. Helen Driskill
Mr. Erich and Mrs. Joann Drochner
Mr. Peter J. Durkin
Mr. Allen and Mrs. Leisa Durrett
Education Credit Union
Mr. Paul F. Engler
Mrs. Susan and Dr. Clinton Esler
Mr. Andrew B. Everett
Miss Nadell Everhart
Mrs. Shirley Fancher
Mr. Joe and Mrs. Sue Faulkenberry
Mr. John and Mrs. Laurie Featherstone
Mr. and Mrs. Robert G. Ferguson
Fidelity Brokerage Services LLC
Fidelity Charitable
Ms. Patricia Fisher
First United Bank
FirstBank Southwest, N.A.
Mr. Joseph W. and Mrs. Nancy Foran
Mr. Brian and Mrs. Connie Fordham
The Don & Sybil Harrington Foundation
The Ralph H. and Ruth J. McCullough Foundation
The Waite and Genevieve Phillips Foundation
Mr. Tony and Mrs. Diane Freeman
Mr. Kevin and Mrs. Heather Friemel
Mrs. Karen Friemel

Mr. Dean Frigo
The Mark and Cynthia Haney Charitable Fund
Ms. Misty Gamble
Ms. Janet Garner
Ms. Lynn Garret
Ms. Lou Ann Garret
Mr. Lance Garza
Ms. Jo Carol Gassaway
Gayden Family Foundation
Mr. Reid and Mrs. Natasha Gehring
Dr. and Mrs. Robert Gerald
Mr. William Gilmore
Ms. Debbie Gloor
Mr. James P. Goodnight
Ms. Melissa Griggs
Mr. Ray E. and Mrs. Beverly Grimes
Ms. Cindy Gruner
Ms. Andrea Gulley
Haley Memorial Library
Dr. William L. and Mrs. Betty W. Hallerberg
Dr. Kenneth and Mrs. Debra Hamlet
Mr. Kris Haney
Dr. Trudy Hanson
Happy State Bank
Mr. Allen and Mrs. Carrie Hare
Mr. Bill and Mrs. Bev Harris
Mr. Royce and Mrs. Kay Harris
Mr. Michael and Mrs. Mary Harrison
Mr. J. Michael Harter and Ms. Monique M. DuPuis
Mr. and Mrs. Floyd Hartman
Mr. Bob and Mrs. Lanna Hatton
Mr. Billy and Mrs. Cynthia Hawkins
Mrs. Kendall and Dr. Andrew Hay
Ms. Lisa Hayes-Burt
Mr. Dale and Mrs. Elaine Hazlewood
Mrs. Laura Heath
Mr. Bradley Heim
Ms. Carol F. Heller
Dr. Charles K. Hendrick
Mr. and Mrs. J. P. Hickman
Mr. Tanner Hicks
Dr. Kimberly Hieb
Mr. and Mrs. Tom Higley
Mr. King Hill
Ms. Betty Hill
Mr. and Mrs. Jerry H. Hodge
Ms. Melinda Hodson
Mr. Joel and Mrs. Madonna Hogue
Mr. Ben Holland
Ms. Lori Holstrom
Mr. William Hoskins
Ms. Lynn Hotchkiss
Mr. Joe K. Howell
Mr. Jack and Mrs. Marlene Hudgins
Dr. Alex Hunt and Dr. Bonnie Roos
Dr. Douglass and Mrs. Alice Hyde
Dr. Ken Indeck
Mr. Timothy Ingalls
Dr. Brian Ingrassia
Mr. John and Mrs. Janie Irwin
Mr. Moeed Ishrat
Mr. Richard and Mrs. Jo Jackson
Ms. Sally Jackson
Mr. Billy Brit Jarvis
Mr. James and Mrs. Mavis Jennings
Mr. Glendon and Mrs. Denise Jet
Mr. and Mrs. Charles Johns
Mr. Aaron and Mrs. Kristin Johnson
Mr. Monty Johnson
Ms. Sylvia Johnson
Dr. David and Mrs. Ellen Jones
Dr. Mitchell Jones
Mr. Lance and Mrs. Audrey Jones
Josephine Anderson Charitable Trust
Ms. Nancy Josseland
KAMR 4/FOX 14
Dr. Paul Katz

Mr. Thomas M. Keel
 Mr. Dale and Mrs. Betsy C. Keeney
 Mr. David Kemp
 Mr. Phil and Mrs. Edith Kimbrough
 Mr. Charles and Mrs. Georgia Kitsman
 Ms. Regina Knorpp
 Ms. Jobi Koumalats
 Mr. and Mrs. Cole Koumalats
 Dr. Nicole Kraus
 Mr. John and Mrs. Nancy Kritser
 Dr. Marty Kuhlman
 Mr. Alvin and Mrs. Lisa Kuhlman
 Mrs. Lorene Lacer
 Mr. Alan LaFon
 Ms. Claudette L. Landess
 Mr. J.B. Lane
 Ms. Anne Lankford
 Mrs. Lois and Mr. Rodney Laubhan
 Mr. and Mrs. Tim Leach
 Mr. Don and Mrs. Kathi Lee
 LeMarr Family
 Mrs. Thomas Lemons
 Dr. Jake and Mrs. Carlene Lennard
 Mr. Thomas Linehan
 Mrs. Jacqueline Llewellyn
 Ms. April Locke
 Mr. Martin Lopez and Mrs. Becky Lopez
 Mr. Patrick and Mrs. Jennilee Lovelady
 Mr. Samuel B. and Mrs. Carol V. Lovelady
 M&R Package Store
 Mr. Dempsey and Mrs. Kara Malaney
 Dr. Jessica Mallard
 Ms. R. Elaine Maples
 Ms. Meredith Marmaduke
 Mr. John H. Marmaduke
 Dr. Raymond Martin and Dr. Victoria J. Thompson
 Mr. David and Mrs. Desiree Matlock
 Dr. J. Paul and Mrs. Sandy Matney
 Maynard Foundation, Inc.
 Mays Foundation
 Mr. and Mrs. Michael McBroom
 Mr. and Mrs. Doug McCause
 Ms. Patricia McCormick
 Ms. Lindsey McDivit
 Mr. Richard McElreath and Mrs. Jennifer McElreath
 Mr. Chris McGilvery
 Dr. Richard F. McKay
 Ms. Leah McLain
 Dr. Kevin McLeod
 Ms. Margaret A. Mead
 Mr. Michael D. and Mrs. Doris R. Meredith
 Mesa Beef
 Mr. Andrew Miller
 Mr. Johnnie W. and Mrs. Linda S. Miller
 Mr. Will and Dr. Misty Miller
 Ms. Susan Milligan
 Mr. Jule and Mrs. Helen Minium
 Miss Jennifer Modzel
 Mrs. Paula and Mr. Gary Moore
 Mr. Joe and Mrs. Elaine Morris
 Mr. John David and Mrs. Kaylee Anne Morrison
 Mr. Kenneth L. Mot
 Mr. Darrell and Mrs. Jane Munsell
 Mr. Scott Nelson and Dr. Lisa A. O'Brien
 Mr. Walter Nelson
 Ms. Kim Nettles
 Nexstar Inc Dallas Shared Services
 Disbursement Center
 Ms. Barbara Noah
 Dr. Dan and Mrs. Nancy Novak
 Mr. Lawrence and Mrs. Sharon Oeschger
 Oliver Saddle Shop
 Ms. Jenni Opalinski
 Mr. Alex O'Brien
 Ms. Mary Ann O'Rear
 Mr. Larry and Mrs. Cheryl Orman
 Mr. James Marlin Oswald
 Mr. Kyle Paris
 Mr. Denny and Mrs. Sue Park
 Mrs. and Mr. Nancy Parsons
 Ms. Ruth Pasquine

Mr. Don and Mrs. Dorothy Patterson
 Mr. Tom R. Patterson
 Dr. Phillip and Mrs. Judy Periman
 Mr. Robert S. Perkin
 Mr. Lawrence and Mrs. Tennessee Pickens
 Mr. Tim Pillsbury
 Mr. and Mrs. Kenneth Pirtle
 Dr. Bruce and Mrs. Lorraine Pistocco
 Plains Internet, LLC
 Mr. Rhett and Mrs. Beverly Plank
 Mr. Denis and Chris Plank
 Mr. Jim and Mrs. Peggy Pollard
 Ms. Marci Pool Hand
 Mr. Terry and Ms. Ginger Porter
 Mrs. Anne and Dr. David Potter
 Mr. Chris and Mrs. Kristi Potter
 Mrs. Betsy and Mr. Charles Powell
 Mr. Robert Prentice
 Mr. Four and Mrs. Karen Price
 Mr. Joseph and Mrs. Stephanie Price
 Mr. and Mrs. Eric Pullen
 Dr. Julie Putman
 Mrs. Penny and Mr. Dan Rahlfs
 Mr. Gene and Mrs. Louise Rahl
 Dr. Todd Rasberry and Mrs. Blanche Overton
 Mr. Rusty and Mrs. LaDonna Ratliff
 Mr. Buster Ratliff
 Ms. Clara H. Ratliff
 Mr. DeWitt Ray III
 Mr. Daniel Reagan
 Mrs. Wendy C. Richards
 Mr. Thomas C. Riney
 Ms. Cornelia W. Ritchie
 Ms. Tracy Ritchey
 Dr. and Mrs. Robert Ritter
 Ms. Betty Ritter
 Ms. Jane Roberts
 Mr. Joe D Rogers
 Mr. Mason Rogers
 Mr. Harold E. and Mrs. Wanda Root
 Ms. Louise C. Ross
 Mr. Lenny J. and Mrs. Linda Sadler
 Ms. Noelle Salmon
 Mr. James Savage
 Mr. Stanley Schaeffer
 Mr. Mendell and Mrs. Laura Schelin
 Mr. Bryan and Mrs. Teresa Schley
 Mr. Bruce R. Schoonover
 Ms. Linda Schrib
 Schwab Charitable
 Mr. and Mrs. Gene Scivally
 Mr. William Scot
 Mr. Mark Sellers
 Mr. Austin Sharp
 Ms. Frances J. Sharpe
 Sharpened Iron Studios
 Mrs. Kathy and Mr. Terry Sheldon
 Mr. Clay and Mrs. Allison Shelton
 Mr. and Mrs. John M. Shelton, III
 Mr. J. Malcolm and Mrs. Claudia Shelton
 Mr. Scott Sherwood
 Mrs. Aarika Shields
 Mr. and Mrs. Buz Sickler
 Ms. Cheryl K. Simonsen
 Mr. Dale A. and Mrs. Caroline Smith
 Mr. Donnie and Mrs. Donna Smith
 Mr. Ed and Mrs. Susan Smith
 Mr. Larry and Mrs. Jo Ann Smith
 Mrs. Fairy G. Smith
 Ms. Teresa Smith
 Ms. Clara Sneed
 Mr. Eddie and Mrs. Charlyn Snow
 Ms. Wisconsin Historical Society
 Ms. Rosalie Sommerfeld
 Mr. Jeffrey M. and Mrs. Patricia B. Sone
 Dr. and Mrs. Kyle Sparkman
 Mr. Mark A. Spencer
 Sprouse Shrader Smith PLLC
 Mr. Winston Stahlecker
 Mr. Mike Standefer
 Mr. John Steensen

Mr. John Steffen
 Stewart Martin Dudley & Webb, PC
 Mr. William Stocker
 Ms. Claudia Stravato
 Mrs. Laura and Mr. Joe Street
 Street Volkswagen
 Mr. Warren and Mrs. Mildred Stricker
 Mr. Douglas W. Tanner
 Ms. Heidi Taylor
 Mrs. Barbara and Mr. Scott Taylor
 Mrs. Katherine Thomas
 Mr. James D. and Mrs. Martha Thompson
 Ms. Janis Thorne Pof
 Mr. Brennan Thornton
 Dr. Meg Thornton
 Mr. Robert and Mrs. Diane Thorpe
 Ms. Cynthia Toles
 Ms. Judy Tolk
 Mr. and Mrs. Brad K. Tooley
 Toot 'n Totum
 Dr. William and Dr. Janet Townsend
 The C.J. and Syble Fowlston Charitable Trust
 Ms. Kelly Tucker
 Mr. Eddy and Mrs. Beckie Turner
 Mr. Jack Franklin Turner
 Ms. Wendi Tuz
 Underwood Law Firm
 University of Texas at Arlington
 Ms. Whitneyrose Upchurch
 Mr. John and Mrs. Alice Upshaw
 Mr. and Mrs. John Van Pelt
 Mr. Don Max and Mrs. Lila Vars
 Victoria Jones Jewelry
 Visit Grapevine
 Mr. Jake and Mrs. Sheridan Voigt
 Mr. John W. and Mrs. Karen Walker
 Ms. Winifred A. Walker
 Mr. Jim Wann
 Mr. Ron and Mrs. Sandra Watts
 Mr. George T. West and Mrs. Judy D. West
 West Texas Western Store
 Western Leather Craft Boot Co.
 Mr. David Whatley
 Mr. David and Mrs. Suzanne Wheeler
 Mrs. Terry and Mr. Mark White
 Mr. Mark Whitman
 Mr. James and Mrs. Barbara Whitton
 Mr. and Mrs. Michael Wied
 Mrs. Katharyn and Mr. Steve Wiegand
 Dr. David Wilcox
 Mr. Wiles and Dr. Wiles
 Mr. Al Williams
 Mr. Donald M. Williams
 Ms. Stephanie Williams
 Mr. James M. Willis, Jr.
 Ms. Mary J. Winstead
 Mr. William Winter
 Mrs. Olivia and Mr. Scott Winter
 Mr. Russ and Mrs. Julie Winters
 Ms. Amelia D. Winton
 Mr. Jones Witcher and Ms. Carol Autry
 Mr. Larry E. and Mrs. Shawna Whitthar
 Mr. Larry Wolf
 Mr. Phil and Mrs. Nancy Woodall
 Mr. and Mrs. Steve Woodard
 Dr. David C. and Mrs. Alicia Woodburn
 Mr. James Woolsey
 Mr. Ronald and Mrs. Karyn V. Wooten
 Ms. Brandi Wright
 Dr. Stephen and Mrs. Diana Wright
 Mr. Clint Wright
 Mrs. Leahray and Mr. John Wroten
 WTAMU Alumni Association
 WTAMU Foundation
 WTAMU Sybil B. Harrington College of
 Fine Arts and Humanities
 Wyben Homes LLC
 Mr. Joe Young
 Mrs. Britny and Mr. Alfonso Zambrano
 Mr. and Mrs. Stephen Zimmer



PPHM

PANHANDLE-PLAINS HISTORICAL MUSEUM

2503 4th Avenue, WTAMU Box 60967
Canyon, Texas 79015
806-651-2244

panhandleplains.org