

PPHM Honors Centennial Anniversary of World War I



News
panhandleplains.org



CAROL LOVELADY
Interim Director

Director's Report

BOARD OF DIRECTORS

- Mike Connor,
President
- Will Miller,
President Elect
- Ted Paup,
Treasurer
- Mary Bearden,
Past President
- Kenneth Crossland
- Tiffany Curtis
- Jonathan Grammer
- Scott Higginbotham
- Alice Hyde
- Bob Josserand
- Randy Rikel
- Joe D. Rogers
- Jeffrey Sone
- David Woodburn

One of my favorite things about being associated with PPHM is hearing how much people love the museum and memories they have of visiting as a child.

I frequently hear: "I love the museum. I remember going with my school. I cannot tell you the last time I visited the museum."

Why is it we often neglect opportunities in our own backyard? Let me share three reviews recently posted on Trip Advisor:

- *There is something for everyone and every age group.*
- *Saw this on Trip Advisor, so I decided to go and take a look. I'm certainly glad I did. 2 ½ hours went by without me even knowing.*
- *Wonderful way to spend an afternoon.*

Panhandle-Plains Historical Museum is a treasure. With more than 3 million items in our collection, we are Texas' largest history museum. But we need your help! We need you to visit and we need your support.

Every time you walk through the door you make a difference. Like every business, numbers are what make us successful. We need you to come to the museum.

We also need your financial support. Many people think PPHM is funded by the state and West Texas A&M University. Only 27% of the \$2.4 million it takes to operate the museum for one year comes from the state and the university.

Even after income generated by membership, admissions, and other sources, every year we must raise close to \$1 million for the museum to provide programs for school children, open new exhibits, present public programs, and care for the 3 million items that tell the story of the Panhandle-Plains.

It is a huge task to raise that much money and we need your help. Visit the museum and bring a friend! Renew your membership! Make a donation!

Don't just say you love the Panhandle-Plains Historical Museum, show us!

Inside this Issue



WWI Centennial Anniversary

5



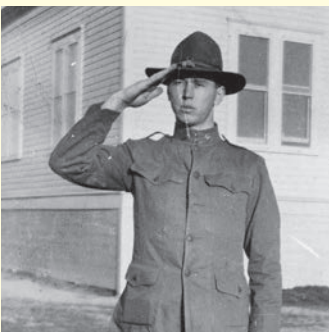
Doughboys and Home Folks

6



The Great War and the Panhandle-Plains Region

7



A Picture from Home: Snapshots of the Great War on the Plains

8

Museum Hours

September – May
9 am - 5 pm Tuesday – Saturday

June – August
9 am - 6 pm Monday – Saturday

Closed
Sundays, New Year's Day,
Thanksgiving Day,
Christmas Eve, Christmas Day

Admission

Adults	\$10
Seniors 65+	\$9
Children 4-12	\$5
Members	Free

Cover Photo:

*Vase (Trench Art)
75 mm Brass Artillery Shell Casing,
rope tassels
Embossed: "Verdun 1918"
Donated by Mary Jane Reeves*

*75 mm Artillery Round
Donated by Eva Biggerstaff Dowden*

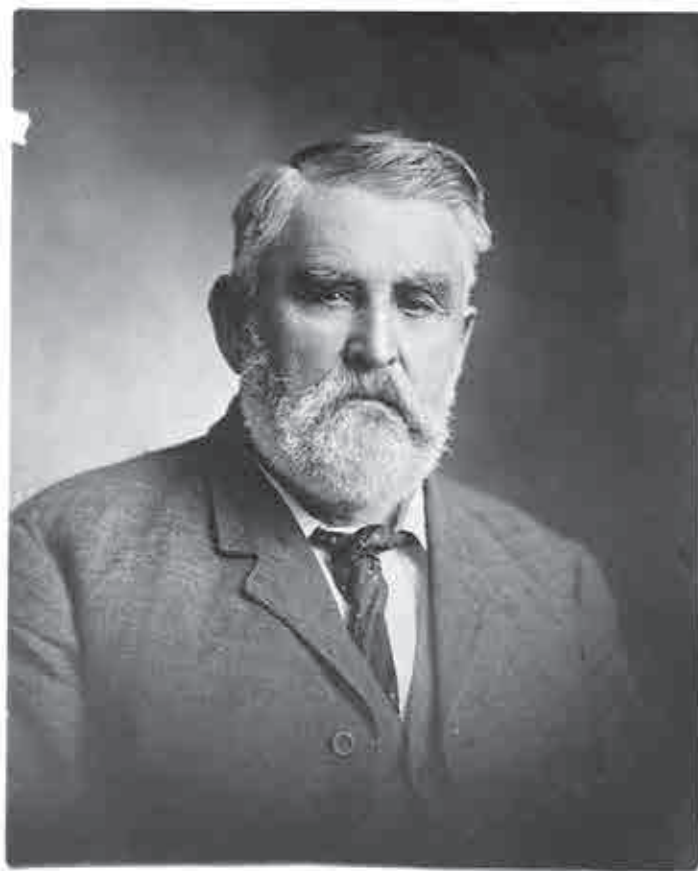
*Colt Model 1911 semi-automatic pistol
Donated by Dr. William S. Wallace II*

*US Army Model Gas Mask, 1917-19
Donated by Mrs. Glenn McDavid Jr.*

*PPHMNews is published by the Panhandle-Plains Historical Museum (PPHM),
WTAMU Box 60967, Canyon, Texas 79016.*

Stephanie Price & Cassidy Horn - Editors

*Copyright 2017 by Panhandle-Plains Historical Museum. No part of this publication may
be reprinted or otherwise reproduced without express written consent and permission
from the publisher. PPHM is located on the campus of West Texas A&M University.*



Charles Goodnight (1836-1929) – famed Texas cattleman. Goodnight's papers are in the Research Center at PPHM.

Rounding Up The Goodnight Circle

By Carol Lovelady, Interim Director

Members of the Goodnight Circle are cordially invited to attend a private showing of art in the WTAMU President's Home on Tuesday, Feb. 7th.

The event will begin at 6 pm at the home located at 1000 WTAMU Drive. Cocktails and hors d'oeuvres will be served while Dr. Walter Wendler, the 11th president of the university, welcomes guests. Following the welcome, Michael Grauer, Curator of Art and Western Heritage and Associate Director of Curatorial Affairs, will speak about the art displayed in the President's Home.

The Goodnight Circle is named in honor of Charles Goodnight, the famed Texas cattleman, and is the highest level of membership for the Panhandle-Plains Historical Museum at \$1,000 per year.

Benefits of membership in the Goodnight Circle include:

- *Free standard admission for up to six guests per visit for one year (card holder must be present)*

- *Invitations exclusive to Goodnight Circle events*
- *Goodnight Circle lapel pin*
- *One complimentary Family gift membership for friends*
- *20% discount on museum space rental*
- *10% discount in museum store*
- *One year subscription to PPHMNews and Panhandle-Plains Historical Review*
- *Free use of museum library and archives*
- *Ten guest passes for standard admission*
- *\$920 tax deductible*
- *25% of each Goodnight Circle membership will be dedicated to the museum's endowment.*

For further information about the event on Feb. 7th or to become a member of the Goodnight Circle, please e-mail bratliff@pphm.wtamu.edu or phone (806) 651-2252.



Student Army Training Core performing a drill at West Texas State Normal College in 1918.

World War I Centennial Anniversary

By Cassidy Horn, Communications and Marketing Assistant

The assassination of Franz Ferdinand, the archduke of Austria-Hungary, by a Serbian man was the tipping point that would eventually divide Europe into two alliances and mark, what many scholars suggest, as the beginning of The Great War. World War I was known as The Great War (or The World War) up until World War II, because the idea of another war that encompassed the entire globe seemed unthinkable.

World War I was the first war to appear on the silver screen, and although pictures coming to life changed how civilians saw the world, the videos were still bound by the limitations of black and white. In the upcoming exhibitions, *A Picture from Home: Snapshots of the Great War on the Plains*, museum visitors can look back at remarkable black and white photos and see the war as an outsider. The exhibition *Doughboys & Home Folks* brings the front lines and home front into a jaw dropping color experience. Finally, *The Great War and the Panhandle-Plains Region* will offer a glimpse into the before, during, and after lives of people from our area during World War I.

Artifacts throughout these three exhibits honoring the centennial anniversary of the U.S. entering World War I include a list of West Texas A&M students who died, propaganda posters, an army shaving kit, weapons, militaria, uniforms, and much more.

Doughboys & Home Folks is open January 7th through September 2, 2017. *A Picture from Home: Snapshots of the Great War on the Plains* and *The Great War and the Panhandle-Plains Region* both open January 28th through December 30, 2017.

This program is part of *World War I and America*, a two-year national initiative of Library of America presented in partnership with The Gilder Lehrman Institute of American History, the National World War I Museum and Memorial, and other organizations, with generous support from The National Endowment for the Humanities.

For more information on these exhibitions visit panhandleplains.org.



Doughboys and Home Folks

By Becky Livingston, Curator of History

More than 1 million American families sent their sons and daughters to serve in uniform during the Great War. One hundred sixteen thousand, five hundred and sixteen U.S. soldiers gave their lives in combat. Another 200,000 were wounded, a casualty rate far greater than in World War II. More than 350,000 African-Americans served in the U.S. military, as did Native Americans and members of other minority groups. And, for the first time, women joined the ranks of the U.S. armed forces.

—United States World War I Centennial Commission

When the United States entered the Great War in 1917, all the army combat branches, aviators, logistical support troops, and even the U.S. Marines were individually and collectively labeled Doughboys. *Doughboys and Home Folks* is the first of several PPHM World War I exhibitions. Our exhibitions and related programs will be part of a nationwide and global effort to commemorate the 100th anniversary of United States participation in the Great War (it wasn't referred to as World War I until there was a second such war).

Using artifacts from the PPHM collection, *Doughboys and Home Folks* explores wartime life in the military and on the home front. Informative text panels and reproductions of actual World War I propaganda posters spotlight the U.S. government's unprecedented, and perhaps sometimes heavy-handed, efforts to recruit doughboys and motivate the U.S. public to support



Examples of propaganda posters used by the US Government's Committee on Public Information to market World War I to ordinary citizens.

and finance the war effort.

Like the Centennial Commission, we hope that these exhibitions will increase knowledge of "the history of World War I, United States involvement in that war, and the war's effects on the remainder of the 20th century."

Doughboys and Home Folks is open now and ends September 2, 2017.

The Great War and the Panhandle-Plains Region

By Michael Grauer, Associate Director for Curatorial Affairs/Curator of Art and Western Heritage

As the largest history museum in Texas, and given our proximity to numerous training sites for WWI that include Fort Sill, Camp Douglass, and the former English Field (Amarillo Army Air Field (later Amarillo Air Force Base)), the Panhandle-Plains Historical Museum serves a geographical region that has always had a strong US military presence throughout history. For example, we honored the sesquicentennial of the Civil War from 2011 through 2015 through exhibits and public programming. Some of those exhibits are still in place. Every spring and fall semester, we provide public programs on World War I and World War II weaponry from our Weapons Gallery for West Texas A&M University history students. We have offered, in recent years, museum-wide exhibits and public programs on the Red River War, 1874-75; World War II; and US military uniforms. Finally, PPHM is heavily involved in the building of the Veterans Memorial at West Texas A&M University.

From January 28 through December 2018, to coordinate with the centennial of the US entry into World War I (April 6, 1917), PPHM will offer a major exhibition, *The Great War and the Panhandle-Plains Region*, using artifacts such as militaria, uniforms, souvenirs, weapons, photographs, and archives from PPHM's collections. PPHM is seeking the donation of a Springfield Model 1903 U.S. Rifle, in .30 caliber, for this exhibition and for PPHM's permanent collection. The exhibition will examine the lives of specific soldiers, Marines, sailors, and nurses (there was no Air Force) from the Panhandle-Plains region who served in World War I.

The exhibition is being built around the following individuals:

William C. Burgy, U.S. Navy (Amarillo)
Cal Farley, U.S. Army (Amarillo)
Royce P. Gaut, U.S. Army (Amarillo)
William David Hawkins, U.S. Marines (Amarillo)
Burrell Rolling Hill, U.S. Army (Canadian)
Paul G. Klawitter, U.S. Army (New Ulm)
Archie W. McDavid, U.S. Army (Amarillo)
Edgar "Unk" Ramey, U.S. Navy (Dimmitt)
Edgar Lee West, U.S. Army (Canyon)
William H. Younger Jr., U.S. Army (Tulia)
(Specific nurses will be included as well)

Against a backdrop of World War I itself, PPHM's exhibition in the Harrington Gallery will examine who these individuals were before, during, and after World War I. This exhibition will collaborate with West Texas A&M University faculty, Amarillo College faculty, and their students in history, English, communications, and art departments.

PPHM is also partnering with regional junior high school teachers and students to capture and create a clearinghouse of names and biographies of those who served in World War I from the upper 26 counties of Texas and the contiguous counties of Kansas, Colorado, New Mexico, and Oklahoma. Finally, due to our recent efforts to include veterans and their families in public programs, particularly those associated with VFW posts and the VA hospital in Amarillo, Texas, PPHM will throw a wider loop to engage descendants of World War I veterans in a substantive way.

For more information about this exhibit or to make a donation call (806) 651-2244.



Royce P. Gaut's
U.S. Army Uniform
from 1917.



"Canteen Girls" in Hereford during World War I. Canteen Girls were known for meeting trains full of soldiers and handing out food.

A Picture from Home: Snapshots of the Great War on the Plains

By Warren Stricker, Director of Research Center

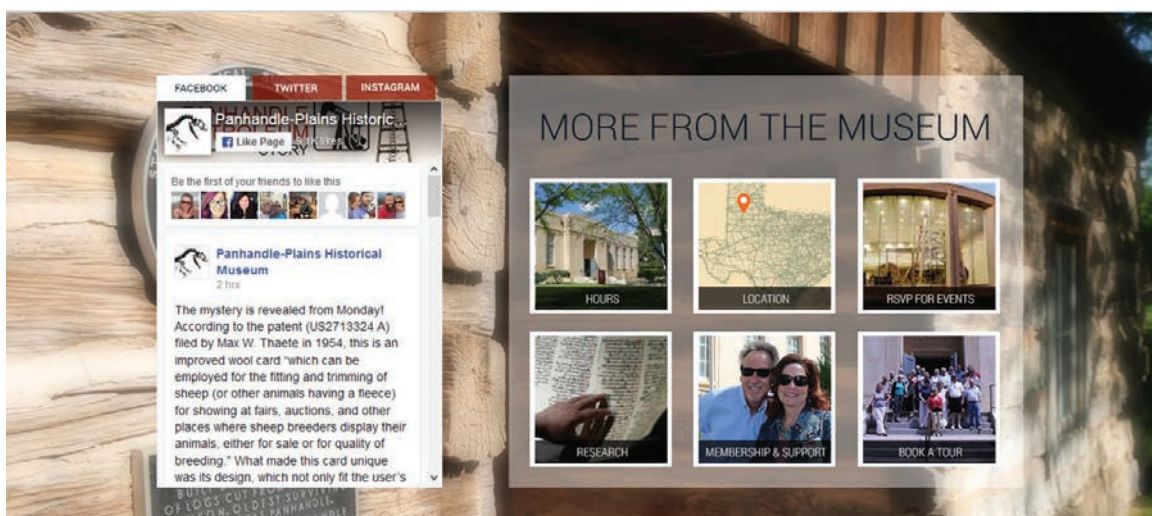
Through most of the 19th century, photography was the province of professionals trained to handle the complicated and cumbersome equipment and chemicals needed to produce a finished image. By the 1880s, rapid technological improvements to cameras and film greatly simplified the process, and when the United States entered World War I, photography was a medium available to people in all walks of life.

Residents of the Texas Panhandle region made use of inexpensive cameras as they threw themselves into the preparations for war. Newly inducted soldiers and sailors modeled their uniforms as they prepared to embark to training camps or the theater of war. Civilians recorded their participation in the war work or in the patriotic displays held regularly during the conflict. Celebrations of war's end and the return of those in service were also witnessed by the camera.

Images of the Panhandle during the war are an important part of the archival collections housed at the museum's Research Center. These include formal portraits of the men and women who played a role in the response to war; more common are the informal snapshots that capture the excitement and uncertainty of those years. *A Picture from Home: Snapshots of the Great War on the Plains* will display reproductions of photographs from the Research Center collection in the Alexander Gallery January 28th through December 30, 2017 as part of a series of exhibitions commemorating the centennial of American involvement in World War I.



Unidentified soldier, possibly, in Canyon. Photo from the Leona Sumner scrapbook.



Glimpse of the upcoming, redesigned website panhandleplains.org.

PPHM Website Redesign

By Elaina Cunningham, Associate Director of Community Engagement

PPHM is thrilled to announce our website is getting a complete redesign. Scheduled to launch early this year, www.panhandleplains.org will feature a colorful, easy to use interface with loads of new content, that will be added regularly.

"We felt it was time to redesign the website to make it more user friendly, add more content and update our current content, so visitors can readily find the information they are seeking," said Stephanie Price, Communications and Marketing Director.

The new website will include a social media ticker, calendar of events, and quick links to the museum store, education, research and archives, tour information, membership, and museum exhibit information.

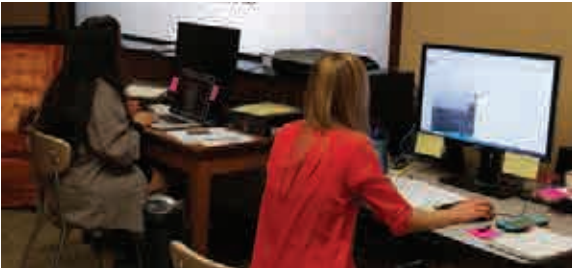
"The new website will enable us to really dig deep in the collection and feature artifacts that aren't usually on display. We will also have the

opportunity to add more interactive content like videos and photos to enhance each exhibit. In addition, it will make it much easier for visitors to register online for programs held at PPHM," Price said.

Saffire, the company designing the website, specializes in non-profit organizations, chambers of commerce, state and local fairs, and convention and visitor bureaus. Founded in 1998, Saffire websites integrate social media and social sharing, partner promotion, responsive design, email and text marketing, and more. Saffire has offices in Austin, Texas and Portland, Oregon.

"Saffire really made an impression as far as the design of the site and the easy to use content management system," Price said.

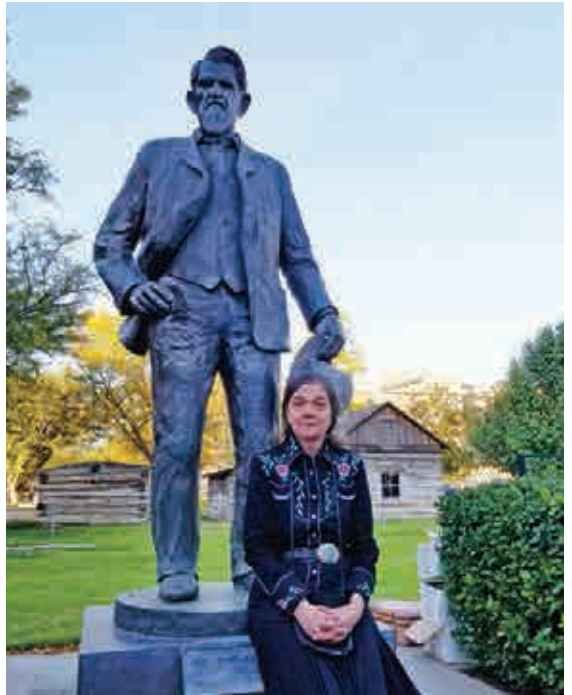
Be on the lookout after the first of the year for special promotions and marketing ahead of the official launch.



CSAW interns working in their office space within the museum.



Western Historian Patricia Limerick was the inaugural speaker at the Gary L. Nall Lecture in Western Studies on October 27, 2016.



CSAW Rhymes with “Yee-haw!”: The Newly Created Center for the Study of the American West

By Alex Hunt, CSAW Director

CSAW, recently approved by the Texas A&M System Board of Regents, is now open. Our office space, a renovated room in the old conservation wing of the Panhandle-Plains Historical Museum, is home to a team of student interns, several computers, and a growing collection of books on the American West.

As a WT English professor and specialist in Western American literature, and someone who has sought to build connections with PPHM during my 14 years here, I am proud to direct CSAW. The director team is also comprised of Dr. Timothy Bowman of the Department of History and Maureen Hubbart, who earned her MA in History from WT a few years ago.

By definition, an academic research center is an entity that facilitates, coordinates, and amplifies research, teaching, and public outreach efforts of the university. At WTAMU, we realize that we have wonderful scholars all over the university doing important work relevant to the history, culture, and community of the High Plains and the greater region of the American West. And obviously, the Panhandle-Plains Historical Museum is an incredibly rich asset in its collections of artifacts and art. Yet it seems that we could do much more, and make a greater impact, if our efforts were more coordinated. This is the initial goal of CSAW.

Other short-term goals of CSAW include further

developing and promoting the Garry L. Nall Lectures in Western Studies, promoting WT curriculum and courses on the study of the region at the university, and funding research grants for regional and western scholarship. As for the Nall Lecture, the inaugural event featuring western historian Patricia Limerick, held in October, was a great success, bringing an audience of over 300 to the museum. On April 13, the Nall Lecture will bring S. C. Gwynne, author of *Empire of the Summer Moon*, *Rebel Yell*, *The Perfect Pass*, and many articles in *Texas Monthly* relevant to the region. We look forward to a lively engagement with Gwynne.

Longer range, CSAW is also exploring ways in which we can bring the university and museum closer, for example by offering student internships and by promoting research opportunities at the PPHM Research Center. We are also exploring initiatives relevant to CSAW's benefit to the regional community through such activities as collecting oral histories and cataloguing local archival collections. We hope we can develop into a center that helps towns of the region develop historical, cultural, and natural assets for sustainable community.

If you would like more information about CSAW, please contact me (ahunt@wtamu.edu). We are seeking interested members of the community, partnering organizations, and donors for various initiatives. We are just getting started in our work.

PPHM Upcoming Events

By Samantha Biffle, Programs Coordinator

PPHM has a great list of events planned for our visitors. We invite you to save the date for each event and make PPHM part of your plans. Please visit our website at panhandleplains.org for a complete listing of events and to make reservations.

FOSA

Thursday, January 12th 5:30 – 7:00 PM
Hazlewood Lecture Hall

Join us for a seminar led by Michael R. Grauer, Associate Director of Curatorial Affairs. The seminar will educate attendees in the quality, breadth, and depth of the Panhandle-Plains Historical Society's extensive fine art collections. The first in the 2017 series will focus on the art of printmaking for the exhibitions. This event is free for FOSA Members and \$30 for Non-Members.



OPENING RECEPTION FOR WORLD WAR I EXHIBITIONS

Friday, January 27th 6:00 – 8:00 PM
Hazlewood Lecture Hall

Help the Panhandle-Plains Historical Museum commemorate the 100 year anniversary of the United State's entry into World War I by attending the opening reception for the exhibition *World War I: The Great War and the Panhandle-Plains Region*.



The crowd at the Panhandle PBS NOVA screening in 2015.

PBS NOVA SECRET TUNNEL WARFARE SCREENING AND ROUNDTABLE DISCUSSION

Thursday, February 9th 6:00-9:00 PM
Hazlewood Lecture Hall

During World War I, the Allies and Germans repeatedly struggled to break the hideous stalemate of trench warfare. In the winter of 1916, Allied engineers devised a massive surprise attack: over 1 million pounds of explosives hidden in secret tunnels driven under German lines. Building the tunnels was desperate work, with tunnelers at constant risk from flooding, cave-ins, and enemy digging teams. In June 1917, the planted mines at Messines were simultaneously triggered, killing an estimated 10,000 German troops instantly. Now, archaeologists are revealing the extraordinary scale and risks of the Allied tunneling operations in one of the biggest excavations ever undertaken on the Western Front. "Secret Tunnel Warfare" opens a unique window on the frenzy of Allied mining activity that led up to the attack and its bitter aftermath.

Join us for a screening of the film and roundtable discussion to follow. Admission is free.

WOMEN IN THE GREAT WAR

Saturday, March 11th 10:00 AM-12:00 PM
Hazlewood Lecture Hall

In conjunction with World War I exhibitions and Women's History Month, the Panhandle-Plains Historical Museum is hosting a discussion of women's roles during World War I. Join us as we explore the lesser told story of World War I and discuss the female influence on World War I. This program is free with regular admission.



Photo of downtown Amarillo from the PPHM archives.

AMARILLO DOWNTOWN WALKING TOUR

Saturday, March 4th and April 22nd
10:00 AM-1:00 PM

Amarillo is a city steeped in architectural and cultural history. Come and learn the city's secrets, everything from hidden murals to architectural sources, by joining Michael Grauer, Associate Director of Curatorial Affairs/Curator of Art and Western Heritage, on a walking tour of downtown Amarillo. Space is limited to the first 20 people. Cost is \$25 per person which includes a drink from Palace Coffee. Reservations must be made online.

DREAMLAND CEMETERY WALKING TOUR

Saturday, March 25th 3:00-6:00 PM
26500 US-87, Canyon, TX

Participants will learn about the cemetery's history, architecture and monuments and hear stories of past people and places.

The Dreamland Cemetery Tour is a collaborative effort between PPHM and the Dreamland Cemetery Association. Make sure to wear comfortable shoes. Admission is free.



GARRY L. NALL LECTURE IN WESTERN STUDIES FEATURING S.C. GWYNNE

Thursday, April 13th 7:00 -9:00 PM
Hazlewood Lecture Hall

Author S. C. Gwynne's *Empire of the Summer Moon: Quanah Parker and the Rise and Fall of the Comanches, the Most Powerful Indian Tribe in American History* spent four months on the New York Times Top 10 Bestseller List and was later a finalist for both the Pulitzer Prize and the National Book Critics Circle Award. In this lecture, Gwynne will speak about this seminal work and some of his more recently published pieces. Admission is free.



Thomas H. Knighton, third from the right, during World War I.



Thomas E. Knighton, left, probably taken in San Francisco, shortly before his departure for Japan, 1945.

Donor Spotlight: The Knighton family of Canyon, Texas

By Warren Stricker, Director of Research Center

The wars of the 20th century defined generations of American citizens as they served in times of crisis. In some cases, their impact has been felt by successive generations of the same family, as fathers and sons answered that call to service.

The Knighton family of Canyon, Texas was one such family. Thomas H. Knighton was 21 years old when he joined in the U.S. Army in the summer of 1917. He rose to the rank of sergeant in an ambulance company, serving in France in the final months of World War I. After the war, he moved to Canyon, Texas, where he married and began a family. His oldest son, Thomas E. Knighton, joined the Army Air Corps reserve in 1943, hoping to become a pilot. When a medical condition kept him from that goal, he enlisted in the infantry in 1945 and served in occupied Japan in 1946. Upon his discharge, he earned a degree in music at West Texas State College and began a long career as a music teacher in Perryton.

Papers of the Knighton family were donated to the Panhandle-Plains Historical Museum in 2013 by Rev. Jeff Knighton, Thomas E. Knighton's son. They include documents and photographs related to Thomas H. Knighton's World War I service, and material from the later military career of Thomas E. Knighton. Of particular interest is the series of letters written by the younger Knighton to his parents, detailing the ups and downs of a young soldier facing new and uncertain circumstances. Rev. Knighton characterizes his father's letters as "thinking out loud," and writes "I have been deeply blessed by Dad's perspective and experience." Thanks to the donation of these papers, researchers can also benefit from that unique point of view.

For information on these and other collections, contact the museum's research center at (806) 651-2254.



Sierra Granger in front of the oil derrick at the museum.

Adventures in Education

By Elaina Cunningham, Associate Director of Community Engagement

Sierra Grange is the newest member of the PPHM Education Department, who began her employment in mid-October.

Her duties are assisting in the daily operation of the department, including administrative tasks, volunteer recruitment and coordination, administrative tasks related to education programming, and assisting with event coordination for children and adults.

Sierra will also be in charge of maintaining a volunteer roster, interfacing with volunteers in person and by telephone, greeting school groups and guiding tours throughout the museum, off site outreach programs, and coordination of interns throughout the museum.

"I love when tour groups come through and the kids have questions for me, because I feel like they were engaged and care about all of the things they have learned," Sierra said.

Sierra is a small town girl from White Deer, TX. She graduated from Texas Tech with a degree in anthropology and a love of learning.

"PPHM was a place I spent a lot of time at when I was younger, and as a place that really shaped how I saw history. It made sense to me to come back here to help educate others," she said.

Her free time is usually spent reading Stephen King or Harry Potter novels, watching horror movies, or cuddling with her dog Atticus and her cat Cersei.

PPHM continues to bring the most exceptional talent to our staff because of the great reputation the museum has across the state and U.S.. If you see Sierra, please welcome her to the PPHM staff.



Burcham at his work station in the Archeology Department where he researches and documents artifacts.

Volunteer Spotlight: Andy Burcham

By Jennifer Langley, Education Intern

Andy Burcham currently plays an integral role at PPHM as a volunteer in the Archeology Department under the supervision of Dr. Veronica Arias. Every Tuesday, Andy can be found downstairs continuing his efforts to research and document artifacts for a baseline inventory of all state-associated held-in-trust collections. His work contributes to the museum's goal of obtaining repository certification by the Texas Historical Commission as part of the Curatorial Facility Certification Program, which sets the professional standards for curatorial facilities across the state holding these types of collections.

Recently, Andy retired from a career as a chemical engineer in the petrochemical industry. His longtime love of history and Archeology has opened up the doors of adventure in his free time. After joining Panhandle Archeological Society, Andy learned of volunteer opportunities at PPHM with training provided by Dr. Arias and her team. Working with the many artifacts housed here at

PPHM, motivates Andy to explore more avenues of interest such as attending the Lithics Academy hosted by the Texas Archeological Society. Volunteering at PPHM has been the perfect adventure for Andy!

When Andy isn't working with artifacts, he enjoys travelling with his wife, Rita, and long distance backpacking. Last year, he backpacked down the Colorado Trail and hiked 250 miles in three weeks. He also completed the Texas Master Naturalist program, combining his enjoyment of learning and having contact with the natural world.

The staff at Panhandle-Plains Historical Museum appreciates Andy and all of the many volunteers who give us thousands of hours each year. Our volunteers help make PPHM great. If you are looking for new adventures or just have some free time, we would love to have you join the PPHM Volunteer Team. Please contact Sierra Grange, Education Assistant/Volunteer Coordinator at (806) 651-2249.



Stop by the Museum Store
**TAKE A UNIQUE
PIECE OF THE TEXAS
PANHANDLE HOME**

PPHM

PANHANDLE-PLAINS HISTORICAL MUSEUM
STORE.PANHANDLEPLAINS.org



HIGH-END TEXAS GIFTS • JEWELRY • APPAREL • HOME DECOR • ART PRINTS • BOOKS • CHILDREN'S GIFTS

Store Corner

By Heather Knowles, Associate Director of Finance and Retail

The Panhandle-Plains Historical Museum Store is off to market this month. We are excited to come back with new and fresh merchandise that reflects the one of a kind exhibitions created at PPHM. Whether your kiddos love dinosaurs or you've come to learn about the early panhandle pioneers, like Charles Goodnight, the PPHM Store aspires to have everything you are looking for.

The three World War I exhibits commemorate the centennial of the United States entry into World War I. The PPHM Store knows what a tremendous opportunity it is to help this exhibition reach far beyond the walls of the Panhandle-Plains Historical Museum and we can't wait to share the new merchandise coming Spring.

RETURN SERVICE REQUESTED

Calendar of Events

- WHEN GEORGIA WAS HERE
Now – Friday February 24th, 2017
- AMERICAN INDIAN ART FROM THE
SUSAN J. ALLEN COLLECTION
Now – Wednesday April 8th, 2017
- DOUGHBOYS AND HOME FOLKS
Now – Saturday September 2nd, 2017
- ART THAT WORKS
Now – Saturday October 21st, 2017
- FOSA: AN EVENING WITH THE ART COLLECTION
Thursday, January 12th 5:30–7:00 PM
- OPENING RECEPTION FOR *THE GREAT WAR*
EXHIBITIONS
Friday, January 27th 6:00 – 8:00 PM
- THE GREAT WAR AND THE PANHANDLE-PLAINS
REGION
Saturday January 28th – December 30, 2017

- A PICTURE FROM HOME: SNAPSHOTS FROM
THE GREAT WAR ON THE PLAINS
Saturday January 28th – December 30th, 2017
- PBS NOVA *SECRET TUNNEL WARFARE* SCREENING
AND ROUNDTABLE DISCUSSION
Thursday, February 9th 6:00-9:00 PM
- WOMEN IN THE GREAT WAR
Saturday, March 11th 10:00 AM-12:00 PM
- AMARILLO DOWNTOWN WALKING TOURS
Saturday, March 4th and April 22nd 10:00 AM-1:00 PM
- DREAMLAND CEMETERY WALKING TOUR
Saturday, March 25th 3:00-6:00 PM
- GARRY L. NALL LECTURE IN WESTERN STUDIES
FEATURING S.C. GWYNNE
Thursday, April 13th 7:00 -9:00 PM

New Members

- FRIEND**
Ms. Samantha Biffle
Amarillo, Texas
- Mr. John Jones
Chattanooga, Tennessee
- Mr. Jimmy Martin
Amarillo, Texas
- FAMILY**
Mr. and Mrs. Harry Britt
Amarillo, Texas
- Mr. and Mrs. Terry Christie
Amarillo, Texas
- Mr. and Mrs. Ross Clopton
Amarillo, Texas
- Mrs. Melinda Ewing
Canyon, Texas
- Ms. Julie Halley
Dallas, Texas
- Mrs. Jennifer Langley
Amarillo, Texas
- Mr. and Mrs. Mark Lanham
Canyon, Texas
- Mr. Chen Liang
Canyon, Texas
- Mr. and Mrs. Philip Niles
Canyon, Texas

- Dr. and Mrs. Russell Sparling
Canyon, Texas
- Mrs. and Mr. Sarah Woolsey
Lubbock, Texas
- Mr. and Mrs. Michael Zicker
Amarillo, Texas
- CONTRIBUTOR**
Mr. and Mrs. Angel Bandera
Amarillo, Texas
- Mr. and Mrs. Jim J. Brewer
Amarillo, Texas
- Ms. Judy Carter
Amarillo, Texas
- Mr. Charles and Dr. Georgia Kits-
man
Amarillo, Texas
- Mr. and Mrs. John H. Marmaduke
Amarillo, Texas
- Mr. and Mrs. Hank Paup
Fort Worth, Texas
- SUPPORTER**
Mrs. Patsy Walker
Amarillo, Texas

Memorials and Honorariums

- MEMORIALS**
Mr. and Mrs. John M. Patterson
in memory of Mrs. Ann Pharr
- Mr. and Mrs. Ted Paup
in memory of Mrs. Floy Ophelia Freeman
- Ms. Amelia D. Winton
in memory of Mr. Roy Lynn Evans
- HONORARIUMS**
Mr. and Mrs. P.F. Anthony
in honor of Mr. and Mrs. Ted Paup
- Mrs. Mary Bearden
in honor of Mrs. Lanna Hatton
- Mr. and Mrs. Ted Paup
in honor of Mrs. Laurie Clayton