

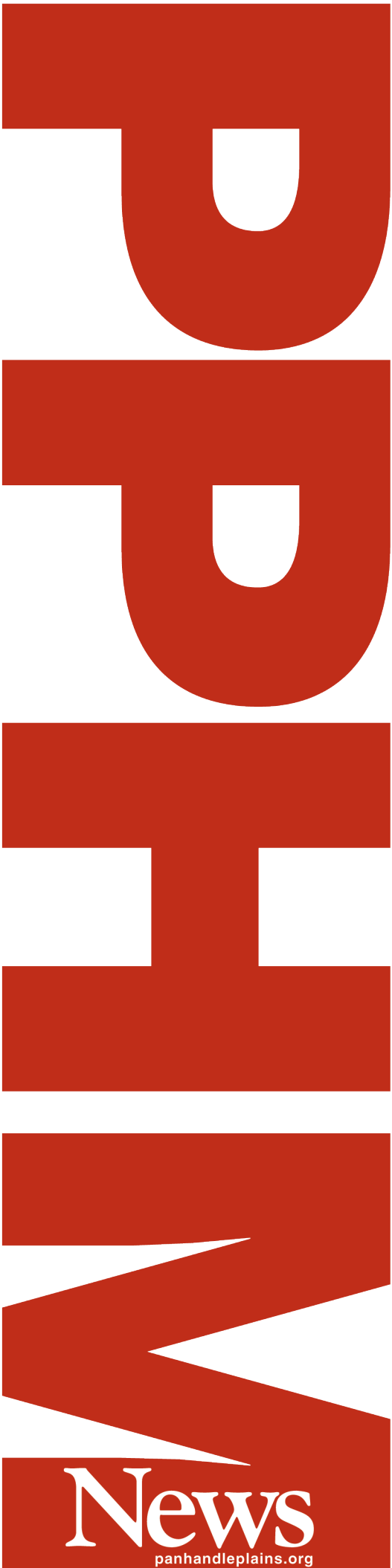


PPHM  
UnVeiled:

Rococo

*An Evening of French Opulence*  
INSPIRED BY *Versailles*

SATURDAY • APRIL 13, 2019



News  
panhandleplains.org

Winter 2019 VOLUME 15, NO.1



CAROL LOVELADY  
Director

# Director's Report

## BOARD OF DIRECTORS

Will Miller  
*President*

Jack Miller  
*President-Elect*

Tony Freeman  
*Treasurer*

Mike Connor  
*Past President*

## TRUSTEES:

Kathy Cornett  
Kenneth Crossland  
Robbin Dawson  
Joel Hogue  
Alice Hyde  
Jessica Mallard  
Gary Moore  
Ted Paup  
Kelly Whittenburg  
David Woodburn

As we move into 2019, the staff of Panhandle-Plains Historical Museum is geared up and ready to provide our members and visitors new exhibits, events and educational opportunities.

Mark your calendar now for two big events.

First, on February 22, we will welcome back Michael Grauer, our former Curator of Art and Western Heritage, for the opening of *Cattle, Cowboys & Culture: Kansas City and Amarillo Building An Urban West*, an exhibit he curated with Dr. Amy Von Lintel, Associate Professor of Art History at West Texas A&M University. This exhibit, which premiered to enthusiastic crowds in 2017 at the Kansas City Public Library, explores the link created by the cattle industry between Kansas City and Amarillo. From architecture to banking to fashion, you will see ties that still bind the two cities.

Next, on April 13, you will have the opportunity to experience our museum as never before. See how lavish rococo decor was embraced by Lucille Nance Jones at her ranch home in the Texas Panhandle.

Spend the evening in the gardens at the Palace of Versailles, residence of the French royals. Sip champagne. Delight in delicious hors d'oeuvres followed by a royal feast. Purchase one-of-a-kind auction items. Then dance the night away.

*UnVeiled: Rococo - An Evening of French Opulence* promises to be an event that will make beautiful memories as we support the Panhandle-Plains Historical Museum and its mission to capture and celebrate our history.

This time two years from now, we will be celebrating the 100th birthday of the Panhandle-Plains Historical Society. On February 5, 1921, Hattie Anderson, a history professor at West Texas State Normal College, L.F. Sheffy, head of the history department, seven other faculty members and about 30 students met in a classroom and organized the Society.

Today - 98 years later - the Society continues to collect, preserve and exhibit the history of the Panhandle-Plains region because of you - its loyal members. Thank you for your support!

# Inside this Issue



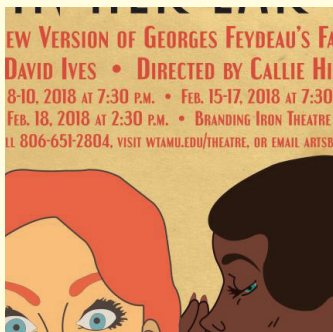
The Importance  
of *UnVeiled*

4



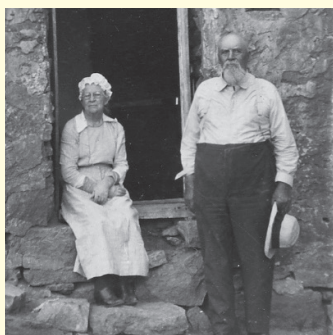
*Cattle, Cowboys &  
Culture Comes to PPHM*

5



*From Page to Storage  
to Stage*

6



Donor Spotlight:  
The Bugbee and  
Patrick Family Papers

13

## Museum Hours

**September – May**  
9 am - 5 pm, Tuesday - Saturday  
Closed Sundays and Mondays

**June – August**  
9 am - 6 pm, Monday - Saturday  
1 pm - 6 pm, Sundays

**Closed**  
New Year's Day, Thanksgiving Day,  
Christmas Eve, Christmas Day

## Admission

\$12.50 - Adults  
\$10 - Seniors 65+ and Active or Retired Military  
\$9 - Groups over 20 (must pre-book)  
\$15- Group Guided Tours  
\$6 - Children (4-12)  
Members and WTAMU Faculty/Staff/Students- Free

*PPHMNews is published by the Panhandle-Plains Historical Museum (PPHM),  
WTAMU Box 60967, Canyon, Texas 79016.*

*Carol Lovelady, Stephanie Price & Megan Nelson – Writers and Editors*

*Copyright 2019 by Panhandle-Plains Historical Museum. No part of this publication may  
be reprinted or otherwise reproduced without express written consent and permission  
from the publisher. PPHM is located on the campus of West Texas A&M University.*

Cover Photo: *Unveiled: Rococo*  
banner designed by Stephanie Sullivan



Logo designed by Stephanie Sullivan.

## The Importance of *UnVeiled*

By Carol Lovelady, Director

It may seem an unlikely pairing, lavish rococo antiques on display in a museum known for its extensive collection of saddles and branding irons. But it is a wonderful example of how Panhandle-Plains Historical Museum tells the stories of the people who have shaped our history.

Bessie Lucille Parker was a waitress in a roadside cafe in Tulia in 1924 when George Edison Nance stepped from his Buick Roadster convertible and struck up a conversation with the dark-haired beauty working behind the lunch counter. It was love at first sight and within months the two were married.

Just a few years later, Lucille's husband began building his herd of registered Hereford cattle. By 1936, the Nance Hereford Ranch was a recognized source of breeding cattle and the couple had started collecting art and antiques. While traveling to livestock shows and cattle sales, Lucille and George frequently visited antique stores, purchasing rare and beautiful pieces of furniture, china, porcelain, silver and art.

On Saturday, April 13, the Panhandle-Plains Historical Museum will celebrate the Lucille Nance Jones collection at its first formal gala – *UnVeiled: Rococo – An Evening of French Opulence*. Just as Lucille took pleasure in opening her home to guests and sharing her treasures, so we will open our doors and marvel at European antiques that once graced the Nance Ranch House outside of Canyon.

"This is a big step forward for us," said Carol Lovelady, director. "We've had fun parties before, but never anything formal. The Lucille Nance Jones Collection is over the top and it inspired us

to do something over the top. People are going to be amazed from the minute they step through the door."

"When we decided to make Lucille's collection the focus of the gala, I did research on the Rococo Movement and learned it first appeared around 1700 at Versailles," said Beverly Plank, chairman of the *UnVeiled* Committee. "So we are transforming the museum into the gardens at Versailles. Parie Donaldson is going to work her magic as our decorations chairman.

"We're making everything French," Plank continued. "We'll have champagne, cognac and a French-inspired menu created by Becky McKinley."

"I see this gala as a friend-raiser, as well as a fundraiser," Lovelady said. "We want people who have never been to the museum to come to the gala, as well as people who have been members and supported us for years. This gala is a celebration of our wonderful museum and it's going to be big and fun and amazing. You don't want to miss it.

"We are a major museum and major museums are known for their galas," Lovelady continued. "We hear people talk about how much they love the museum, but we've never given them the opportunity to show us they love us. Now we are."

Sponsorships for *UnVeiled* range from \$500 to \$50,000 and include premier seating, as well as private behind-the-scenes parties at the museum and limousine transportation to the gala. For more information, contact Carol Lovelady at [clovelady@pphm.wtamu.edu](mailto:clovelady@pphm.wtamu.edu) or Buster Ratliff at [bratliff@pphm.wtamu.edu](mailto:bratliff@pphm.wtamu.edu).





Logo designed by Anne Ducey, Kansas City Public Library.

## *Cattle, Cowboys & Culture* Comes to PPHM

By Stephanie Price, Marketing Director

*Cattle, Cowboys & Culture: Kansas City and Amarillo, Building an Urban West* showcases the shared heritage between Amarillo and Kansas City, and is the work of co-curators Michael Grauer, former Curator of Art and Western Heritage at PPHM, and Dr. Amy Von Lintel, Associate Professor of Art History at West Texas A&M University. For more than two years Grauer and Von Lintel explored the relationship between Amarillo, their hometown of Kansas City and the artifacts at PPHM. The result is: *Cattle, Cowboys & Culture: Kansas City and Amarillo, Building an Urban West*.

This exhibition will make its PPHM debut on Friday, February 22. Both Von Lintel and Grauer will be in attendance at the opening reception to offer their thoughts on the exhibition and its success at the Kansas City Public Library.

The narrative of this show is based in material objects and artifacts, including saddles and other functional goods used by the pioneering cattlemen and urbanists of Amarillo, but also photographs, letters, and architectural renderings in the PPHM collection.

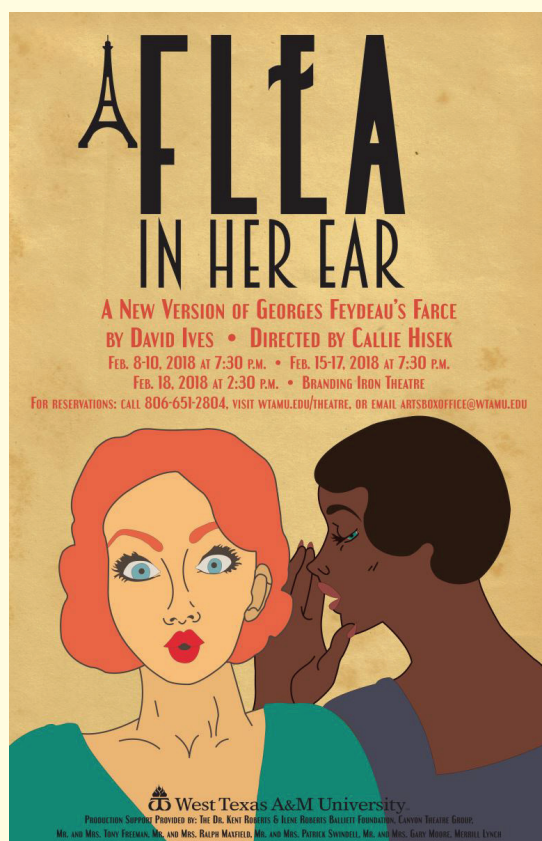
"The art, architecture, city planning, banking, retail, medical and educational institutions of the Amarillo area would not have existed were it not for the influence of Kansas City," Grauer said. These connections "stem, first and foremost, from cattle," Grauer explained. "Cattlemen from Amarillo took their cattle to be sold in Kansas City

and brought connections and purchases made in Kansas City back to Amarillo."

Notable stories in the exhibition include: Amarillo ranching families such as the Bivins and Kritsers, who purchased "city clothing" or "international clothing" for their children in Kansas City. Charles Goodnight's life was saved by a doctor in Kansas City in the late 1870s. The "sister hotel" of SFW's President Hotel in Kansas City is our own Herring Hotel in Amarillo. The recent renovation of the President in Kansas City provides an idea of what the Herring was like in its glittering heyday. In addition to what Amarillo gained, cowboys from the Panhandle-Plains region, carried their own culture to Kansas City.

The exhibition will also feature stories of murder and mayhem. These stories are the inspiration for a new walking tour in downtown Amarillo offered by PPHM. Curator Von Lintel will share the stories of Amarillo from the past and the direct relation to Kansas City with a little murder and mayhem thrown in. More information about this tour is in our event section of this newsletter.

*Cattle, Cowboys & Culture: Kansas City to Amarillo, Building an Urban West* will be on display at PPHM through 2019. For more information on programming, lectures and this exhibition visit [panhandleplains.org](http://panhandleplains.org).



A Flea in Her Ear poster courtesy of WTAMU Theatre

## From Page to Storage to Stage

By Megan Nelson, Marketing Assistant

Debuting in March at PPHM, *From Page to Storage to Stage* will take visitors through the process of creating accurate period pieces for the theatre using costumes from *A Flea in Her Ear*, a special production from the Spring 2017 season at West Texas A&M University.

Anne Medlock, Costume Director in the WTAMU Theatre Department and curator of this exhibit, hopes to bring to light the extensive research that takes place long before a show opens. The exhibit will trace the process of creating costumes for shows from start to finish. *From Page to Storage to Stage* features the original garments, sketches, mock ups, and final products from the show. Medlock believes PPHM is a vast and underutilized resource for researching theatre productions and hopes this will encourage people to protect the textiles in the collection.

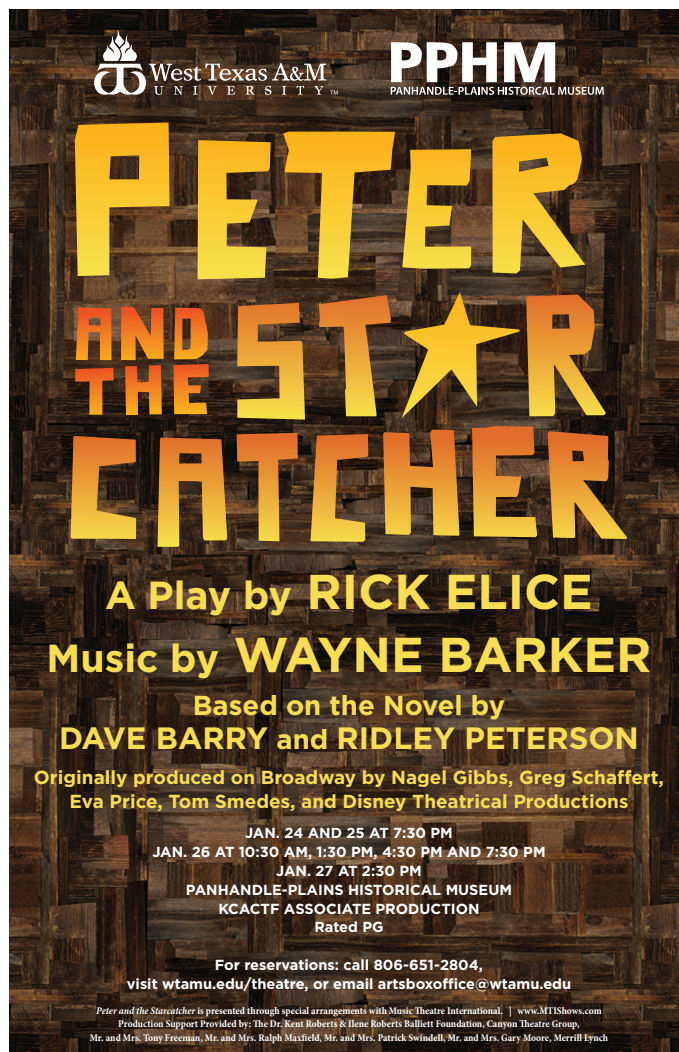
*A Flea in Her Ear* is set in Paris at the turn of the century and is a vaudeville style show that takes deception to new hilarity. The need to study time-period pieces in order to create the show's costumes brought Medlock to PPHM on a grant from the Center of the Study of the American West (CSAW). Medlock visited the Texas Fashion Collection: University of North Texas in Denton and the 1879 Avery House in Fort Collins in addition to PPHM.

While viewing the period clothing, Medlock was able to see how the pieces were originally made. She was also able to create sketches and patterns to start the sewing process for the show. She then instructed her students to create mock ups of the costumes using muslin. After the mock ups were made, the final products were created with colorful fabric.

When asked what she learned from the helping with the costuming for this project, Sabrina Soto, senior theatre performance major answered, "Patience, I learned patience. Pleating took about three days to do. So, patience was key." The extreme detail that went into pleating was for a green skirt, which will be part of the exhibit.

Medlock's favorite dress was a brown silk dress worn by one of the women in *Flea*. She was mainly intrigued by how the garment was originally sewn. "There were things I would have never known without looking at the garment," said Medlock. She stressed the importance of being able to see the pieces in person and how different it was than just viewing a picture or a sketch of a dress for a show.

*From Page to Storage to Stage* will open on March 22, in the PPHM textiles gallery on the second floor. The opening, from 6-8 pm, will be open to the public and will include gallery commentary from Medlock.



Poster courtesy of WTAMU Theater Dept.

## WTAMU Brings the Theatre to PPHM

By Stephanie Price, Marketing Director

When you think of an evening at the theatre, you probably do not associate it with going to the museum. But director Royal Brantley is changing that by challenging his students to combine a non-traditional setting with a West Texas A&M University (WTAMU) Theatre production, *Peter and the Starcatcher*.

The new theatre setting will be the PPHM Hazlewood Lecture Hall, located on the museum's second floor. This versatile space is well known by PPHM members as the place where many lectures and special events take place. For the entire month of January, it will be transformed into the world of Peter Pan while the actors and technicians rehearse, perfect and perform their show.

When asked why he chose PPHM as an experimental location for his production, Brantley said, "About a year ago we challenged ourselves with staging a found space production where our students and faculty will have to solve unique problems in a non-theatre space. PPHM is ideal for such a production, given its notoriety and location."

A special one-hour, family-oriented production, *Peter and the Starcatcher*, is the prequel to J.M. Barrie's beloved story *Peter Pan*. Using story-theatre techniques and comedy, an ensemble of actors tells and shows the very beginnings of Peter Pan, Neverland and Captain Hook's story. The show will be directed by Brantley and performed and designed by WTAMU Theatre students.

"The West Texas A&M University Theatre Department and PPHM make a great duo because we have the space that lends itself as a unique setting and adds atmosphere to this performance. Having the production at PPHM brings theatre patrons to the museum and introduces museum patrons to WTAMU theatre," said Carol Lovelady, PPHM director.

*Peter and the Starcatcher* will be performed for the public from January 24 through 27. Tickets are available beginning January 10 at [www.wtamu.edu/theatre](http://www.wtamu.edu/theatre) or at the WTAMU Fine Arts Complex Box Office.





Rolla Shaller with TAS Fellow Award

## Rolla Shaller Named TAS Fellow

By Stephanie Price, Marketing Director

Rolla Shaller, PPHM volunteer and former staff member, won the prestigious Fellow Award at the Texas Archaeological Society's (TAS) 89th Annual Meeting held at the historic Menger Hotel in San Antonio on Saturday, October 27.

The Fellow Award is given to a TAS member for major contributions to the Society and to Texas archaeology. This special TAS recognition is only awarded for exceptional service. "Past Fellows have been among the pioneers of Texas archaeology and long-time professors. For Rolla to be recognized among those cohorts is a tremendous honor. I can't think of anyone more deserving," said Dr. Veronica Arias, curator of anthropology and natural history.

Shaller, a Canadian native, came to West Texas State University after serving in the military. He first joined PPHM in 1969, when he was hired on

as an Archaeology Assistant, to Dr. Jack Hughes under a National Science Foundation grant. That year Rolla graduated from WT, and then became Curator of Exhibits. He held the position until 1975, when he left to pursue a career in construction.

He came back to PPHM in 1992 as Exhibits Specialist and served as the Interim Curator of Archaeology. In 1997, Rolla was named Assistant Curator of Archaeology under Dr. Jeff Indeck.

He retired in 2008 and took some time off before deciding to come back to volunteer in the department he loves, Archaeology, with Dr. Arias, curator of anthropology and natural history.

To learn more about the Texas Archaeological Society, visit [txarch.org](http://txarch.org).



Stephanie Price with husband Joe Price, Amarillo CVC staff and board at Texas Travel Summit Awards Gala

# Marketing Director Stephanie Price Named 2018 Rising Star

By Megan Nelson, Marketing Assistant

Stephanie Price, Communications and Marketing Director at PPHM, won the Rising Star Award for the Texas Travel Industry Association at the annual Texas Travel Summit Awards Gala in Galveston, Texas on September 26. The Rising Star, presented by Southwest Airlines, is awarded to a young professional in the Texas Travel & Tourism Industry in recognition of accomplishments, leadership, and commitment to the industry and TTIA.

"On behalf of TTIA's members and Southwest Airlines, I am pleased to recognize Stephanie as a Rising Star in the Texas Travel and Tourism Industry," said David Teel, President & CEO. "Her passion for travel and the Travel Industry is exceptional. She is respected among her peers, and has made a positive impact on the community through her extensive volunteer work."

Price develops, coordinates and executes an annual marketing, media and membership plan for all museum exhibits and events. She graduated from West Texas A&M with a bachelor's degree in advertising and public relations and has a master's degree in public relations from Kent State University. She serves as chair of the Amarillo Convention and Visitor

Council board of directors, past president of AAF-Amarillo and District 10 club achievement chair for the American Advertising Federation. Price is currently seeking her Certified Tourism Executive certification and was named one of Amarillo Chamber's Top 20 under 40 in 2015 and Member of the Year for AAF-Amarillo in 2014.

She loves to travel and has been to 27 different countries, of which England and Australia were her favorites. In her free time, she enjoys reading, volunteering for United Way Amarillo and Canyon, Zeta Tau Alpha, and AAF-Amarillo. Stephanie and her husband of eight years, Joseph, have one daughter, an angel in heaven named Charlotte.

"My younger self never would have dreamed that a career could have been made out of sharing travel and the history of the state of Texas. My greatest joy in the role of Marketing Director at PPHM is watching new visitors and repeat visitors alike gush over the treasures on the walls within the museum," said Price in her acceptance speech. "People like our founder, Hattie Anderson, who had so much gumption that she built and created a museum during the Great Depression, or the Molly Goodnight, who saved the Texas state bison herd, are a daily inspiration for me."



# Winter Events

By Megan Nelson, Marketing Assistant

With the start of the new calendar year, PPHM is excited to offer a wide variety of new programming.

## WTAMU THEATRE: PETER AND THE STARCATCHER

January 24- 25 7:30PM, January 26- 10:30AM, 1:30PM, 4:30PM and 7:30PM, January 27- 2:30PM  
Hazlewood Lecture Hall

A special one-hour, family-oriented production, *Peter and the Starcatcher*, is the prequel to J.M. Barrie's beloved story *Peter Pan*. Using story-theatre techniques and comedy, an ensemble of actors tells and shows the beginnings of Peter Pan, Neverland and Captain Hook's story. The show will be directed by Royal Brantley and performed and designed by WTAMU Theatre students. Tickets available starting January 10 at [wtamu.edu/theatre](http://wtamu.edu/theatre).

## FOSA: GEORGIA O'KEEFFE, TEXAS AND WWI with DR. AMY VON LINTEL

Thursday, February 7, 6:00 PM Reception, 6:30 PM Speaker  
Hazlewood Lecture Hall

Dr. Amy Von Lintel, WTAMU Associate Professor of Art History, will explore the writings Georgia O'Keeffe penned from Canyon, Texas between 1914 and 1916, in light of the war and the American home front. This material comes from her forthcoming book, *A Voice from the West: Georgia O'Keeffe's Texas Letters and WWI in America*, to be published by Texas A&M University Press in Spring 2020. A special reception will precede the lecture. Tickets are free for FOSA members and \$35 for non-members and are available at [panhandleplains.org](http://panhandleplains.org).

## EDUCATOR'S NIGHT OUT

Tuesday, February 12, 4:30 PM – 7:00 PM  
Museum Wide

PPHM invites educators to a FREE evening at the museum! Gain useful, engaging, standards-based curriculum materials centered around PPHM's permanent collection and exhibits. This event will provide K-12 resources for arts, social studies, science and other subjects for the classroom. Enjoy free food, drinks, and giveaways while networking with friends and colleagues. All educators are welcome including homeschool and informal educators. Educators free with valid ID and guest admission is \$5 at the door.

## OPENING RECEPTION FOR CATTLE, COWBOYS & CULTURE EXHIBIT

Friday, February 22, 6:00 PM – 8:00 PM  
First Floor

Join us for a member's only opening of *Cowboys, Cattle & Culture: Kansas City to Amarillo, Building an Urban West*. Previously at the Kansas City Library, *Cattle, Cowboys & Culture* broke attendance records and was part of the 2017 Goodnight Circle trip. This exhibit was co-curated by Michael Grauer during his time here, and focuses on how the cattle industry forged a link between the two cities. Grauer will speak at the opening of this exhibit, as will co-curator Dr. Amy Von Lintel. This event is free and for members only.

## CSAW: DOUG RICKETTS LECTURE

Thursday, February 28, 7:00 PM – 9:00 PM  
Hazlewood Lecture Hall

Doug Ricketts resides near Lipscomb, TX where he creates unique functional art at his workshop, Prairie

View Furniture. Ricketts' design is the cutting edge of new regional aesthetics, combining modern and regional forms, materials and designs. This lecture is free of charge and is held by the Center for the Study of the American West. For more information, go to [wtamu.edu/csaw](http://wtamu.edu/csaw).

## CRAFTS AND DRAFTS

Friday, March 1, 6:00 PM – 9:00 PM  
Museum Wide

Join PPHM for a fun evening of food, crafts, and draft beer samples. If you like beer themed food, trivia, and think the idea of playing corn hole in a museum sounds fun then this event is for you. Expect to get hands-on with DIY projects, enjoy food from many different local restaurants, show off your trivia skills, and hear from the Panhandle beer brewing community. Tickets are \$40 for non-members, \$30 for members, are all inclusive and available at [panhandleplains.org](http://panhandleplains.org). MUST be 21+ to attend.

## CSAW: OLIVER LOVING: DEAN OF THE TRAILS with DR. DEBORAH LILES

Tuesday, March 19, 7:00 PM – 9:00 PM  
Hazlewood Lecture Hall

Find out more information about this lecture at [wtamu.edu/csaw](http://wtamu.edu/csaw).

## OPENING RECEPTION FOR FROM PAGE TO STORAGE TO STAGE EXHIBIT

Friday, March 22, 6:00 PM – 8:00 PM, Textiles Gallery

The exhibition will focus on the costumes and dress from the West Texas A&M University play, *A Flea in Her Ear*. *Flea* is set in Paris at the turn of the century and this vaudeville style show takes deception to new hilarity. The exhibit will include information about the original dress patterns and costumes created for the show. Opening reception will feature refreshments and gallery commentary from curator Anne Medlock of WTAMU Theatre. This event is free to members and WTAMU faculty, staff and students; \$10 for the public.

## CATTLE, COWBOYS & CULTURE WALKING TOUR

Saturday, April 6, 6:00 PM Tour, 8:00 PM Drinks  
Downtown Amarillo

PPHM presents a brand new walking tour conducted by Dr. Amy Von Lintel, co-curator of the *Cattle, Cowboys & Culture* exhibition at PPHM. Learn the connections between Amarillo and Kansas City and how both towns thrived in the cattle industries with a little murder and mayhem thrown in.

Tickets are \$30. Only 25 tickets will be sold and are only available at [panhandleplains.org](http://panhandleplains.org). Tour will conclude with drinks downtown. \*No refunds due to weather.\*

## WEEK OF THE YOUNG CHILD

April 9 – 12, 9:00 AM – 12:00 PM  
First Floor

Children will talk to a dinosaur during Triceratops Tuesday, see a real life snake and have a dance party on Wiggly Wednesday, explore life on the Plains on Time-Travel Thursday and learn about engineering and building on Fix-It Friday. Reservations required! Contact the Education Department at [education@pphm.wtamu.edu](mailto:education@pphm.wtamu.edu) for more information. Cost is \$3 per student.

**CSAW: GARRY L. NALL LECTURE, GROWING UP DEAD IN TEXAS with STEPHEN GRAHAM JONES**  
Tuesday, April 9, 7:00 PM – 9:00 PM  
WTAMU Legacy Hall

Stephen Graham Jones grew up in West Texas and is now a professor of literature and creative writing at the University of Colorado Boulder. He has written more than 20 novels, that combine elements of the Native American novel with genres including crime thriller, horror, and sci-fi. Check out *Growing Up Dead in Texas* or *Mongrels* to get a taste for Jones' work. This lecture is free of charge and is held by the Center for the Study of the American West. For more information, go to [wtamu.edu/csaw](http://wtamu.edu/csaw).

**UNVEILED: ROCOCO**

Saturday, April 13, 7:00 PM – 11:00 PM  
Museum Wide

Join us for an evening of French opulence. This extravagant event will unveil PPHM's rococo collection. Individual tickets are \$175 and sponsorships for *UnVeiled* range from \$500 to \$50,000 including premier seating, as well as private behind-the-scenes parties at the museum and limousine transportation to the gala. For more information, contact Carol Lovelady at [clovelady@pphm.wtamu.edu](mailto:clovelady@pphm.wtamu.edu) or Buster Ratliff at [bratliff@pphm.wtamu.edu](mailto:bratliff@pphm.wtamu.edu).



Peyton Kerr, WTAMU student in *Pioneer Town* stable.

## Pioneer Town Transformed Into Escape Town

By Megan Nelson, Marketing Assistant

Pioneer Town is known for its interactivity and has always been a place for kids and kids-at-heart. Now, it is an opportunity for West Texas A&M University students to challenge themselves in a Pioneer Town themed escape room.

An escape room is a venue that 'locks' a group of people in a room with only clues on how to get out. When WTAMU's Office of Student Engagement and Leadership (OSEL) had to move to a larger venue after the popularity from students outgrew the original room in the student center; they found PPHM's Pioneer Town to be a perfect fit.

"Opening it up to a bigger space gives students a new opportunity to try something they may have never seen before," said Robert Roque with

OSEL. "This escape room is tricky. We've based the backstory off of Pioneer Town itself, so students will really have to think."

"This partnership with the OSEL is a great opportunity because it really brings students into the museum in an exciting way," said Stephanie Price, marketing director. "It is important for PPHM to engage with the students at WT in every way."

Currently, the Escape Town is only offered to WTAMU students, and will open up for new appointments starting the first week of classes. Group Sizes can range from four to eight students, and the escape takes roughly an hour to complete.

For more information, call the Ryan Cox with OSEL at (806) 651 – 2046.





Mark and Bobbie Allen at Christmas Open House 2018.

## Volunteer Spotlight: Mark and Bobbie Allen

By Megan Nelson, Marketing Assistant

Although Mark and Bobbie Allen have only been PPHM members for a little over a year, they can be spotted volunteering at our largest and smallest events and giving back to PPHM.

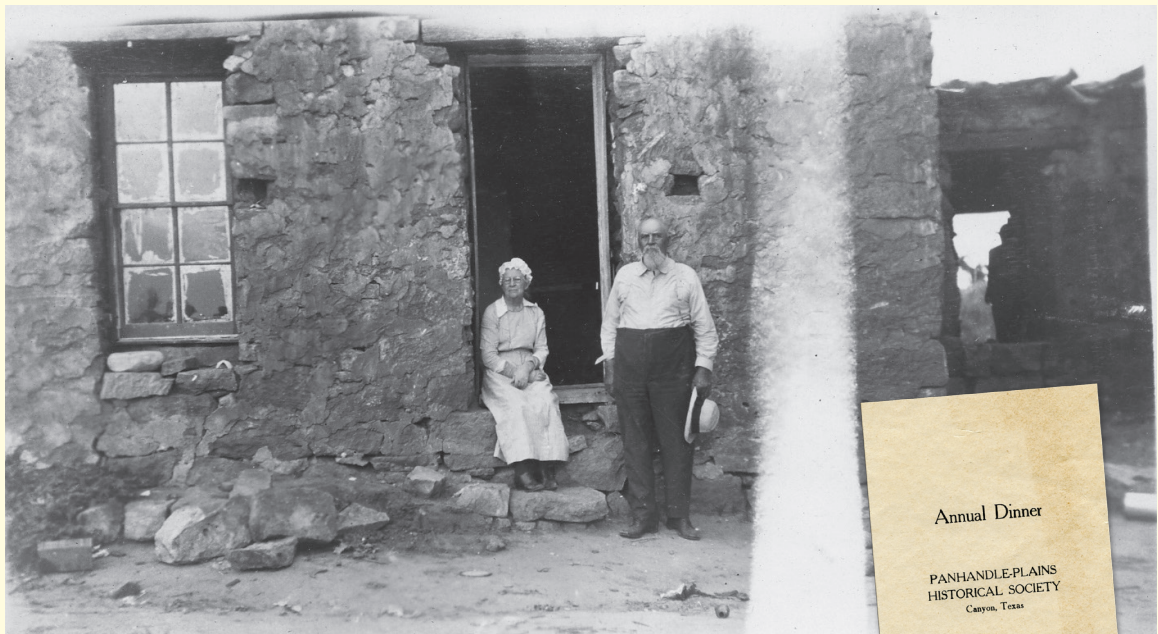
They have volunteered at Night at PPHM, Crafts and Drafts, Christmas Open House, and Dino Day. This past October, they volunteered at Dino Day's "Dress Like a Dino" table by helping children make dinosaur hats, and even wore the fossil hats themselves. Their passion for volunteering can be easily seen by their smiles and bright personalities.

"They are up to any task, and I know I can always rely on them," said Kristin Johnson, volunteer coordinator. When they aren't helping PPHM with fun events, Mark and Bobbie work with Johnson throughout the year in the docent training program, learning the information for tours of the permanent exhibits.

The Allens are both Texas Master Naturalists, a trained volunteer force supporting Texas natural resources, such as Palo Duro Canyon. They enjoy travelling regularly and are currently attempting to visit all the National Parks in the United States. During the day, Mark is a representative for a chemical sales company, while Bobbie is a mental health therapist in a private practice.

Mark and Bobbie value PPHM and want to see it continue to grow. "We find the experience of volunteering with PPHM stimulating. We feel we can support the museum which produces amazing, well-attended events for the community," Bobbie said.

To volunteer with events, school groups, or for more information about becoming a PPHM docent, contact Kristin Johnson at (806) 651-2248 or [kjohnson@pphm.wtamu.edu](mailto:kjohnson@pphm.wtamu.edu).



Above: One Thomas S. and Molly Bugbee on the occasion of their 50th wedding anniversary in 1922, at the site of their stone house in Hutchinson County.

Right: A program from the annual dinner of the Panhandle-Plains Historical Society, 1929.

## Donor Spotlight: The Bugbee and Patrick Family Papers

By Warren Stricker, Research Center Director

The collections of the Panhandle-Plains Historical Society serve as a monument to the region's pioneer and community building past, as well as to the efforts of those who sought to preserve that heritage. Sometimes, both strains are embodied in a single family, as seen in a collection of the Bugbee and Patrick family papers recently donated to the museum by Kathryn Marsh Glenn.

Thomas Sherman Bugbee, pioneer rancher, drove a herd of cattle into the Texas Panhandle from Kansas in 1876, establishing the region's second ranch in Hutchinson County. He continued his involvement with various cattle-raising interests in northwest Texas even after returning to Kansas with his young family. In 1897, he came back to Texas permanently, settling in Clarendon.

Another early arrival in the Panhandle was William H. Patrick, who came to Clarendon in 1888, to work in his uncle's banking and mercantile business. He quickly became involved in the town's business and civic life, as president of the First National Bank, and as mayor and school board president. In 1899, he married Ruby Bugbee, daughter of T.S. Bugbee.

The activities of both of these pioneer families are documented in the family papers. A photograph album gathers images of T.S. Bugbee and his family, including several taken during a return to the site of the stone house where the family lived in the 1870s and 80s. Other photographs detail activities in Clarendon, including a series of snapshots of area residents taken in the 1920s and 1930s; W.H.

Patrick at work and with his family; and promotional images of Donley County agricultural products.

W.H. Patrick also played an important role in the development of the Panhandle-Plains Historical Museum. His service of as an officer of the Panhandle-Plains Historical Society, including terms as president, are represented by letters and other documents from the 1930s and 40s.

Another generation of both families is represented by papers of Harold Dow Bugbee, a distant cousin of T.S. Bugbee, and his wife, Katherine Patrick Bugbee, the daughter of W.H. Patrick. Newspaper clippings and publications about Harold Bugbee and his art are found, as are records of his marriage and military service, letters and photographs. Like her father, Katherine Bugbee had a continuing association with the Historical Society, as represented by letters and ephemera related to the Society and the museum.

The archival collection has been augmented by the donation of family portraits, artifacts, and textiles.

The donor of the papers, Kay Marsh Glenn, is a granddaughter of W.H. and Ruby Bugbee Patrick. Now a California resident, she had conducted extensive genealogical research on both families, some of which is included in the papers. The contributions of the Bugbees and the Patricks to the Panhandle and to the museum have been made more evident by her donation. For more information on this and other archival collections, please contact the museum's Research Center at (806) 651-2254.





Education Assistant Jason Herbert gives a tour of *Paleontology*.

## Adventures in Education: Full STEAM Ahead

By Stephanie Price, Marketing Director

According to the US Department of Education, the total number of STEAM-related jobs in the United States will increase by 14% over the course of this decade (2010-2020), a figure that is 5-8% higher on average than all the other job sectors. STEAM is a nation-wide initiative for schools to focus on Science, Technology, Engineering, Arts and Math.

PPHM is incorporating STEAM into its lesson plans to become a more valuable community and educational resource for the region and the entire state of Texas. As mentioned in the fall issue, this school year has already included new in-gallery STEAM programming. Examples include mathematical counting activities with Zuni, a member of the Comanche nation, as part of the *Native Lifeways* exhibit tour, and a new “touch table” in tours of the *Geology* exhibit. The touch table and subsequent sedimentary rock activities incorporate science, math and art into the school tour.

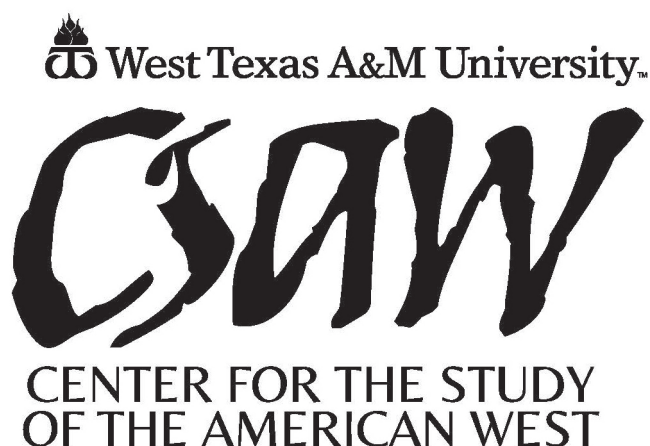
“It has always been the mission of the Panhandle-Plains Historical Museum to exhibit and interpret

the scientific heritage of the Panhandle-Plains region and implementing STEAM activities allows us to better tell that story,” said Heather Friemel, associate director of finance and outreach.

In a 2017 study, Crystal Bridges Museum of American Art discovered that “students who receive school tours of museums experience an increased ability to think critically, have stronger historical empathy, are more tolerant and more likely to visit and support cultural institutions in the future.” The new Museum Educator, Alyssa Martinez is focusing heavily on incorporating and creating new STEAM related activities and Texas Assessment related skills into student visits.

To learn more about field trips and PPHM educational programming, email our Education Department at [education@pphm.wtamu.edu](mailto:education@pphm.wtamu.edu) or call the Education Office at (806) 651-2249.





## When Plans Come Together

By Alex Hunt, CSAW Director

The Center for the Study of the American West (CSAW) is, among other things, a think tank. We come up with many ideas for how to promote interest in the American West at West Texas A&M University, in our regional community, and beyond. This leads to various initiatives which we have to narrow down to projects that seem feasible and advantageous.

As we are an entity under the academic wing of the West Texas A&M University, we are definitely concerned with student engagement, and youth engagement more broadly. It's a well-known problem that organizations concerned with local history or regional studies are not overly blessed with youthful membership. Of course, being on campus, we are developing curriculum and internships that will engage more and more WTAMU students, but we're always looking for new ways.

A recent idea, leading to a grant proposal under submission, has to do with a video game *Red Dead Redemption 2*. This highly immersive role-playing game involving outlaw gangs in the West in 1895 is already making a large impact. It made over \$700 million in sales over its opening weekend, more than any other release in the entertainment industry. And it promises to grow in popularity, becoming the younger generation's formative experience of the American West. What older generations know of the West was heavily colored by film and TV westerns; *Red Dead Redemption 2* will be the equivalent. And this is perhaps a good thing. The game, which put a lot of resources into historical realism, is a richer experience than merely watching westerns.

CSAW has proposed a multi-tiered research program that would have WTAMU students and faculty playing the game and researching its

historical and cultural contexts using PPHM collections. We think this is an opportunity we cannot let pass us by.

Another area of interest is international programs. International!—you say—Isn't CSAW supposed to be about the West? Yes, but the West is of great interest abroad, as was confirmed in experiences as a Fulbright Specialist scholar in Austria a couple of years ago, and reconfirmed by a CSAW research grant recipient from Mannheim, Germany, Johannes Fehrle. CSAW has great potential for spreading interest in our part of the West internationally, and perhaps helping WTAMU students go abroad.

We are always looking for new possibilities, and now one has arrived. Stefan "Steve" Rabitsch is a professor of American Studies at Karl-Franzens-Universität of Graz, Austria. Dr. Rabitsch will join CSAW, using resources at WTAMU and researching collections at PPHM. During his time here in the Panhandle, Steve will amass a great deal of research about western hats—their production, fashions, cowboy lore: the works. Expect a lecture from Dr. Steve Rabitsch in spring of 2019 to share his findings.

The unexpected crossover is that Dr. Rabitsch is an expert in American popular culture, notably video games, and he's already well versed in *Red Dead Redemption 2*. It is our hope that he'll join our crew of researchers on this topic, as well.

At times, I wish that studying the American West were as simple as riding out onto the range. Or at least straightforward enough that we didn't have to go exploring immersive videogaming and bushwhacking in European universities. But, we always need fresh approaches to keep the American West from getting old and dusty.



Photo of Crystal Bridges Trail and Museum (Credit- Crystal Bridges Art Museum Website)

## Come with PPHM to Bentonville and Eureka Springs

By Stephanie Price, Marketing Director

In September, members of the Hattie Anderson Visionary and Goodnight Circle will embark on the third PPHM Membership Trip, this time to Bentonville and Eureka Springs, Arkansas. Interested members should save the dates September 26-29, 2019.

This year's trip promises a visit to the famed Crystal Bridges Museum of American Art in Bentonville, AR, as well as activities in nearby Eureka Springs, nestled in the heart of the Ozark Mountains of Northwest Arkansas.

According to their website, "Crystal Bridges' permanent collection spans five centuries of American masterworks ranging from the Colonial era to the current day. Included within the collection are iconic images such as Asher B. Durand's *Kindred Spirits*, Norman

Rockwell's *Rosie the Riveter*, and Andy Warhol's *Coca-Cola*, each reflecting a distinct moment in American artistic evolution, as well as major works by modern and contemporary American artists, including Georgia O'Keeffe, John Baldessari, and James Turrell. The permanent collection, which continues to grow, is on view year-round and is enhanced by an array of temporary exhibitions."

More information about the PPHM Membership Trip, including pricing, activities and sign-up details, will be forthcoming in the Spring/Summer edition and via direct mail to Hattie Anderson Visionary and Goodnight Circle members. Not a Hattie Anderson or Goodnight Circle member? Contact Stephanie Price at [sprice@pphm.wtamu.edu](mailto:sprice@pphm.wtamu.edu) to join this elite group that supports PPHM and has fun traveling together.





New Amarillo Mural at the Rick Husband Amarillo International Airport

## Don't Suffer from FOMA

Advertorial Written by Dan Quandt, Vice President Amarillo Convention and Visitors Council

**As people cruise along I-27 or I-40, many begin suffering from FOMA, Fear of Missing Amarillo. Don't let this happen to you!**

Amarillo is perfectly situated in the middle of the Texas Panhandle, halfway between Denver and Dallas, Albuquerque and Oklahoma City. Back at the end of the 19th Century, Amarillo was already a gathering place. Ranchers brought their cattle to Amarillo to take them to market by rail. They needed places to eat, sleep and carouse. The forward-thinking merchants of Amarillo cooperated, and the city flourished.

Now Amarillo is an active city of over 200,000 people. If you can't find it in Amarillo, you probably really don't need it. The Yellow City is a regional hub for shopping, entertainment, dining, medical services and so much more.

So, to start with, Amarillo visitors need a place to stay. Amarillo has over 6,500 hotel rooms with over 90 percent of these located within a half-mile of Interstate 40. Whatever kind of accommodations you need, Amarillo has the room for you.

Perhaps you need a bunch of rooms and meeting space. There are hotels that cater to your meeting needs, along with the versatile Amarillo Civic Center Complex with its 410,000 total square feet of meeting space conveniently located downtown.

Maybe your event needs a dirt floor and stalls. Amarillo is ready for you at the Tri-State Fair and Exposition. This is a very popular site for equestrian events as well as other crowd pleasers, especially in the spacious Amarillo National Center.

Everyone needs to get here for all this activity. In addition to two interstates and other state highways, Amarillo is connected to the world through Rick Husband International Airport. Currently served by American, Southwest, United and Via Airlines, the Rick Husband International Airport makes it easy to include Amarillo in your travel plans.

Now, "if you ever plan to motor west, travel my way, take the highway that is best. Get your kicks on Route 66." This nostalgic highway has Amarillo almost as its center point between Chicago and LA. Amarillo's Historic Route 66 District has a variety of restaurants, stores, antique shops and places that will take you back to a different time.

If you'd really like to slow your pace, you can go horseback riding on the rim of Palo Duro Canyon with Cowgirls and Cowboys in the West. Of course, you can also visit Palo Duro Canyon State Park and meander down one of the many hiking or biking trails in the nation's second largest canyon.

Of course, no trip to the Amarillo area is complete without a visit to the largest history museum in all of Texas, the Panhandle-Plains Historical Museum, located less than a half-hour from downtown Amarillo in beautiful Canyon, Texas. From the regular displays to special exhibits and unique events, the Panhandle-Plains Historical Museum is a must stop for everyone.

For more ways to fight FOMA, go to [www.visitamarillo.com](http://www.visitamarillo.com).

# PPHM Welcomes New Staff

By Stephanie Price, Marketing Director



Staff photos by Rik Andersen, WTAMU Photographer

## Alyssa Martinez, PPHM's New Educator

Panhandle-Plains Historical Museum welcomed Alyssa Martinez as the museum's new Educator in November.

Martinez studied at The University of Texas at San Antonio where she obtained a B.A. and M.A in history. After graduate school, she taught middle school, but after a few years, she seized the opportunity to work as a Museum Educator for the Corpus Christi Museum of Science and History, where she developed an affinity for hands-on history.

"I have always wanted to work in a museum! I feel that museums are the perfect place for education and history to merge. Exhibits and artifacts help people get a real feel for historical events and characters. A museum is where history and knowledge are easily accessible to everyone," said Martinez.

As head of the Education Department, Martinez develops lesson plans, STEAM related initiatives, in-museum school tours, outreach programs and PPHM's Summer Camp- *Boulders, Brands and Bones*.



Staff photos by Rik Andersen, WTAMU Photographer

## Emily Quinn, PPHM's Interim Art Curator

PPHM has an incredible, vast art collection and with the departure of Michael Grauer, Curator of Art and Western Heritage, director Carol Lovelady worked to bring in an interim Art Curator to ensure cataloging and proper care of the art collection. That's where Emily Quinn has excelled since coming to the museum in October.

Quinn was born and raised in the Texas Panhandle. After graduating from Amarillo High School, she received my BA in Art History with a minor in Museum Studies from Baylor University. She then moved to London, England and earned an MA in Art History at Christie's Education London via the University of Cambridge. Quinn began her museum career at the National Gallery of Art in Washington, DC, where she worked for four and half years. She then moved on to an inside sales position with the sports apparel manufacturer, Under Armour, in Baltimore, MD, all before starting a family while living in Silver Spring, MD.

She is excited to be back in museums and working with the PPHM collection. "I love the Panhandle-Plains Historical Museum because it's my history. This is where I'm from, this is where my parents and grandparents were born and raised, and it is where I am raising my family. I'm proud and honored to be a part of this institution and what it stands for," said Quinn.

For more information about our staff visit [panhandleplains.org/about](http://panhandleplains.org/about).





Canyon Mainstreet Association Style Show display and model, Byron Wiltz.

# PPHM MUSEUM STORE

PANHANDLE-PLAINS HISTORICAL MUSEUM

## Store Corner

By Kristin Johnson, Store Manager

The Panhandle-Plains Historical Museum Store is excited about 2019 and all the opportunities it brings. We have finished a busy 2018, participating in the Fair on the Square, Canyon Main Street Fashion Show, Small Business Saturday, and Christmas Open House - to name a few. We hope for another successful year that will bring exciting new things for the museum and our visitors.

The Museum Store will start the year with our annual visit to the Dallas Market. We will come back with new, unique items that capture our museum's wonderful collections and also add a touch of that Panhandle spirit we love. We guarantee that you will find something for you and your loved ones.

We are looking forward to the upcoming opening of our *Cattle, Cowboys & Culture* exhibit in February.

This exhibit captures the evolving relationship between Kansas City and Amarillo. Starting out as a simple trading post, Amarillo quickly was established as the largest cattle shipping point in the world, and in turn grew into a cultural mecca for the Panhandle of Texas. This exhibit has created a wonderful opportunity to share new decorative art, clothing, jewelry, and literature. We hope you join us for the opening of *Cattle, Cowboys & Culture* and see our wonderful new selection of merchandise.

Follow us on Facebook and Instagram to see new items and deals. Visit us in store or online at [store.panhandleplains.org](http://store.panhandleplains.org).



RETURN SERVICE REQUESTED

Calendar of Events

*NATIVE LIFEWAYS OF THE PLAINS* EXHIBITION  
May 26, 2018- TBA  
Bivins Gallery

*CATTLE, COWBOYS & CULTURE* EXHIBITION  
February 23, 2019- December 2019  
Harrington Gallery

*PAGE TO STORAGE TO STAGE* EXHIBITION  
March 23, 2019- December 2019  
Textile Gallery

*ROCOCO* EXHIBITION  
April 2019- TBA  
Furniture Gallery

*PETER AND THE STARCATCHER*  
Directed by Royal Brantley, a WTAMU Theatre Production  
January 24- 25 7:30PM  
January 26- 10:30AM, 1:30PM, 4:30PM and 7:30PM  
January 27- 2:30PM  
Hazlewood Lecture Hall

FOSA: GEORGIA O'KEEFFE, TEXAS AND WWI  
with AMY VON LINTEL  
Thursday, February 7, 6:00 PM Reception,  
6:30 PM Speaker  
Hazlewood Lecture Hall

EDUCATOR'S NIGHT OUT  
Tuesday, February 12, 4:30 PM – 7:00 PM  
Museum Wide

OPENING RECEPTION FOR  
*CATTLE, COYBOYS & CULTURE*  
Friday, February 22, 6:00 PM – 8:00 PM  
First Floor

CSAW: DOUG RICKETTS LECTURE  
Thursday, February 28, 7:00 PM – 9:00 PM  
Hazlewood Lecture Hall

CRAFTS AND DRAFTS  
Friday, March 1, 6:00 PM – 9:00 PM  
Museum Wide

CSAW: OLIVER LOVING: DEAN OF THE TRAILS with  
DR. DEBORAH LILES  
Tuesday, March 19, 7:00 PM – 9:00 PM  
Hazlewood Lecture Hall

OPENING RECEPTION  
FOR *FROM PAGE TO STORAGE TO STAGE*  
Friday, March 22, 6:00 PM – 8:00 PM  
Textiles Exhibit

*CATTLE, COWBOYS, & CULTURE* WALKING TOUR(S)  
Saturday, April 6, 6:00 PM Tour, 8:00 PM Drinks  
Saturday, May 18, 6:00 PM Tour, 8:00 PM Drinks  
Downtown Amarillo

WEEK OF THE YOUNG CHILD  
April 9 – 12, 9:00 AM – 12:00 PM  
First Floor

CSAW: GARRY L. NALL LECTURE: "GROWING UP DEAD  
IN TEXAS" with STEPHEN GRAHAM JONES  
Tuesday, April 9, 7:00 PM – 9:00 PM  
Hazlewood Lecture Hall

*UNVEILED: ROCOCO*  
Saturday, April 13, 7:00 PM – 11:00 PM  
Museum Wide

New Members

GOODNIGHT CIRCLE

Mr. and Mrs. Steven Beckham  
Canyon, Texas

CONTRIBUTOR

Mr. and Mrs. William Cornett  
Amarillo, Texas

Dr. and Mrs. Jake Lennard  
Amarillo, Texas

Dr. Todd Rasberry  
Canyon, Texas

FRIENDS & FAMILY

Mr. and Mrs. Tino Alvarado  
Canyon, Texas

Ms. Jinna Barrett  
Wichita Falls, Texas

Ms. Miranda Bible  
Amarillo, Texas

Ms. Kimberly Blanchard  
Canyon, Texas

Ms. Jodi Brewer  
Kansas City, Kansas

Mr. JJ Brewer  
College Station, Texas

Mr. and Mrs. Larry Castagnetta  
Canyon, Texas

Mr. and Mrs. Terry Caviness  
Amarillo, Texas

Dr. and Dr. Paul Clark  
Canyon, Texas

Ms. Hilary Dawson  
Euless, Texas

Mr. and Mrs. David Elizalde  
Amarillo, Texas

Mr. and Mrs. Ronnie J. Fleming  
Amarillo, Texas

Mr. and Mrs. Darryl Gaddy  
Amarillo, Texas

Ms. Mary Jarvis  
Amarillo, Texas

Ms. I S. Millar  
Amarillo, Texas

Ms. Carolyn Ottoson  
Amarillo, Texas

Ms. Harley Reynolds  
Amarillo, Texas

Ms. Anne Sharp  
Amarillo, Texas

Mr. and Mrs. Ed Smith  
Amarillo, Texas

Ms. Claudia Stravato  
Amarillo, Texas

Ms. Jori Thompson  
Houston, Texas

Mr. Jamie Wheat  
Amarillo, Texas

Mr. and Mrs. Jeff Worsham  
Amarillo, Texas