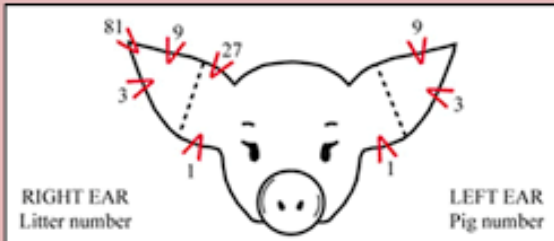


**1. Front View of Head & Chest to See Ear Notches**

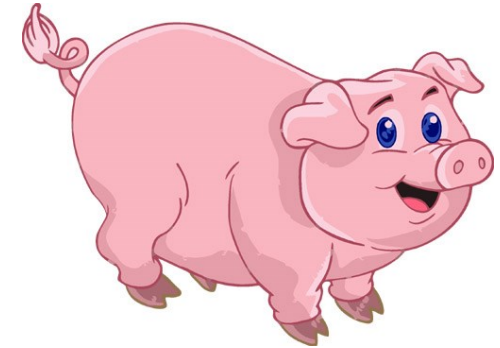
Notch numbering layout



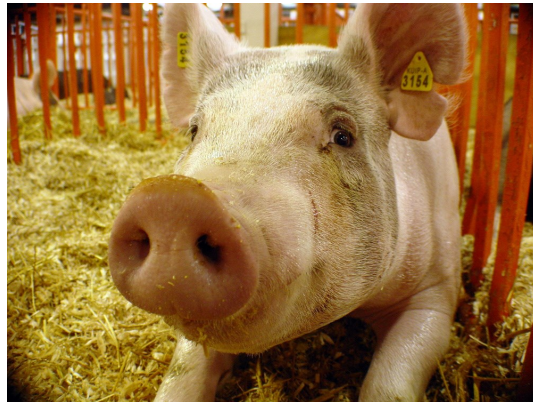
**What we need to see in your pictures to identify your pig.**



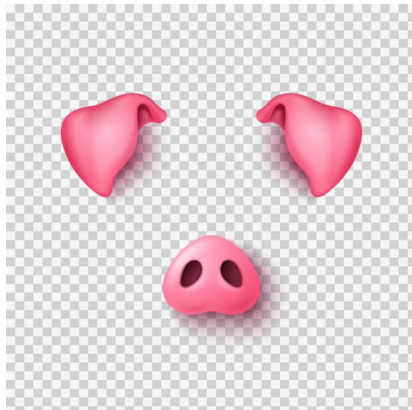
**2. Full Body Side View to Show Unique Markings**



**3. Back of Head to Show PCFHC Tag Number & Premise ID 840 Number**



**Down Eared Pig Front View**



**Standard Eared Pig Front View**



***Include exhibitor's name & ear tag number(s) in subject line of email***