

2019 Plymouth County Fair

LE MARS, IA • JULY 24-28



FAIRGROUNDS OPEN FROM 7:00 A.M. TO 12:00 MIDNIGHT
ALL LIVESTOCK BUILDINGS ARE CLOSED TO EXHIBITORS
FROM MIDNIGHT TO 5:00 A.M.

WEDNESDAY, JULY 24 (JENSEN MOTORS AND FARMERS COOP, CRAIG DAY)

- 7:00 A.M. TICKETS ON SALE AT GATE
- 7:00 A.M. - 10:00 A.M. OPEN CLASS ENTRIES - ART SHOW, CREATIVE HOBBIES, ANTIQUES & COLLECTIBLES, HORTICULTURE, FOOD AND PRESERVATION ENTRIES
LIMITED NUMBER OF GOLF CARTS WILL RUN FROM 7:00 A.M. - 9:00 A.M. ONLY TO PROVIDE TRANSPORTATION TO ALL OPEN CLASS EXHIBITORS FROM SOUTH PARKING LOT TO OPEN CLASS BUILDING
- 7:30 A.M. SWINE SCANNING
- 7:30 A.M. - 10:30 A.M. SWINE CHECK-IN
- 7:30 A.M. - 10:00 A.M. RABBIT ENTRIES IN PLACE
- 9:00 A.M. - 12:00 P.M. 4-H & FFA LIVESTOCK ENTRIES IN PLACE (SHEEP, GOAT, DAIRY, POULTRY, BEEF)
- 9:00 A.M. - 8:00 P.M. DAILY ACTIVITIES IN KIDDIE BARN
- 9:00 A.M. 4-H EXHIBIT BUILDING OPEN
- 10:30 A.M. - 12:00 P.M. BEEF CHECK-IN
- 12:00 P.M. ALL LIVESTOCK WEIGH-INS AND CHECK-INS COMPLETE
- 12:00 P.M. SHEEP SCANNING
- 12:00 P.M. BLAIR HOUSE OPEN
- 12:00 P.M. 4-H CLOTHING EVENT - CENTURY HALL
- 12:00 P.M. "AROUND THE FARM IN THE BARN" - ROUND BARN OPENS
- 12:00 P.M. COMMERCIAL EXHIBITS OPEN
- 1:00 P.M. BEEF SCANNING
- 1:00 P.M. CLOVER BUDDIES RABBIT SHOW, FOLLOWED BY 4-H & FFA RABBIT SHOW - RABBIT BARN
- 1:00 P.M. 4-H & FFA LIVESTOCK JUDGING CONTEST CHECK-IN - COVERED ARENA
- 2:00 P.M. 4-H & FFA LIVESTOCK JUDGING CONTEST - COVERED ARENA
- 3:00 P.M. MILKING DEMO (NEAR KIDDIE BARN)
- 4:00 - 8:00 P.M. LEGO BOOTH - LEGO DEPOT
- 3:30 P.M. 4-H STATIC EXHIBIT GRAND CHAMPION PHOTOS TAKEN - SOUTH END OPEN CLASS BUILDING
- 5:00 - 9:00 P.M. WHAT YOU DON'T SEE EXHIBIT SPONSORED BY PLYMOUTH COUNTY SHERIFF'S OFFICE AND LE MARS POLICE DEPARTMENT
- 5:00 P.M. MIDWAY RIDES OPEN
- 5:00 P.M. MILKING DEMO (NEAR KIDDIE BARN)
- 5:30 P.M. BUCKET CALF CHECK-IN
- 6:00 P.M. BUCKET CALF JUDGING - COVERED ARENA
- 6:45 P.M. 4-H FOUNDATION DONOR CEREMONY
- 7:00 P.M. KING & QUEEN CROWNING - PIONEER VILLAGE
- 7:00 P.M. CAMPBELL'S ELECTRIC MOTOCROSS RACES - GRANDSTAND
- 7:00 P.M. MILKING DEMO (NEAR KIDDIE BARN)
- 9:00 P.M. BLAIR HOUSE CLOSE
- 10:00 P.M. OPEN CLASS AND 4-H EXHIBIT BUILDING CLOSE
- 10:00 P.M. COMMERCIAL BUILDINGS CLOSE
- 10:00 P.M. ROUND BARN CLOSE

THURSDAY, JULY 25 (AMERICAN BANK DAY)

- B&R CHAINSAW SCULPTURES BY BLAIR SMITH AND SCOTTY TOBEN DAILY
- 7:00 A.M. 4-H & FFA HORSE CHECK-IN - HORSE ARENA
- 8:00 A.M. 4-H & FFA HORSE SHOW - HORSE ARENA
- 8:00 A.M. CLOVER BUDDIES BOTTLE LAMB CHECK-IN. SHOW AT 8:30 A.M.
- 8:30 A.M. 4-H & FFA SHEEP SHOW - COVERED ARENA
- 9:00 A.M. 4-H EXHIBIT BUILDING OPEN
- 9:00 A.M. - 8:00 P.M. DAILY ACTIVITIES IN KIDDIE BARN
- 10:00 A.M. OPEN CLASS EXHIBITS OPEN
- 12:00 P.M. BLAIR HOUSE OPEN
- 12:00 P.M. "AROUND THE FARM IN THE BARN" - ROUND BARN OPENS
- 12:00 P.M. COMMERCIAL EXHIBIT BUILDINGS OPEN
- 1:00 P.M. MIDWAY RIDES OPEN
- 1:00 P.M. 4-H EDUCATIONAL PRESENTATIONS - CENTURY HALL
- 2:00-4:00 P.M. 4-H STOMPING GROUND, ACTIVITIES/GAMES FOR 4-H MEMBERS
- 3:00 P.M. MILKING DEMO (NEAR KIDDIE BARN)
- 4:00 - 8:00 P.M. LEGO BOOTH - LEGO DEPOT
- 4:00 - 9:00 P.M. DOUBLE V PONY RIDES - NEAR KIDDIE BARN
- 5:00 P.M. MILKING DEMO (NEAR KIDDIE BARN)
- 5:00 - 9:00 P.M. WHAT YOU DON'T SEE EXHIBIT SPONSORED BY PLYMOUTH COUNTY SHERIFF'S OFFICE AND LE MARS POLICE DEPARTMENT
- 6:30 P.M. FARM OLYMPICS - COVERED ARENA
- 6:30 P.M. TUFF TRUCK - GRANDSTAND
- 6:30 P.M. RC DEMO - SOUTH END OPEN CLASS BUILDING
- 7:00 P.M. MILKING DEMO (NEAR KIDDIE BARN)
- 9:00 P.M. BLAIR HOUSE CLOSE
- 10:00 P.M. OPEN CLASS AND 4-H EXHIBIT BUILDING CLOSE
- 10:00 P.M. COMMERCIAL BUILDINGS CLOSE
- 10:00 P.M. ROUND BARN CLOSE

FRIDAY, JULY 26 (PLYMOUTH COUNTY FARM BUREAU DAY)

- B&R CHAINSAW SCULPTURES BY BLAIR SMITH AND SCOTTY TOBEN DAILY
- 8:30 A.M. 4-H & FFA DOG SHOW - OPEN CLASS BUILDING (SOUTH END)
- 9:00 A.M. 4-H & FFA BREEDING BEEF & MARKET BEEF SHOW - COVERED ARENA
- 9:00 A.M. 4-H EXHIBIT BUILDING OPEN
- 9:00 A.M. - 8:00 P.M. DAILY ACTIVITIES IN KIDDIE BARN
- 10:00 A.M. OPEN CLASS EXHIBITS OPEN
- 12:00 P.M. BLAIR HOUSE OPEN
- 12:00 P.M. CENTRAL DANCE ACADEMY DANCE PERFORMANCE - PIONEER VILLAGE STAGE
- 12:00 P.M. "AROUND THE FARM IN THE BARN" - ROUND BARN OPENS
- 12:00 P.M. COMMERCIAL EXHIBIT BUILDINGS OPEN
- 1:00 P.M. MIDWAY RIDES OPEN
- 2:00 P.M. 4-H & FFA DAIRY COW FOLLOWED BY CLOVER BUDDIES BOTTLE GOAT, THEN 4-H & FFA GOAT SHOW - COVERED ARENA
- 2:30 P.M. 4-H WORKING EXHIBITS - OPEN CLASS - SOUTH END
- 3:00 P.M. MILKING DEMO (NEAR KIDDIE BARN)
- 4:00 - 8:00 P.M. LEGO BOOTH - LEGO DEPOT
- 4:00 - 9:00 P.M. DOUBLE V PONY RIDES - NEAR KIDDIE BARN
- 5:00 P.M. MILKING DEMO (NEAR KIDDIE BARN)
- 6:00 P.M. TRACTOR PULL - GRANDSTAND
- 7:00 P.M. IMPACT PRO WRESTLING - COVERED SHOW ARENA
- 7:00 P.M. COOKING SCHOOL - CENTURY HALL
- 7:00 P.M. MILKING DEMO (NEAR KIDDIE BARN)
- 9:00 P.M. COMMERCIAL BUILDINGS AND BLAIR HOUSE CLOSE
- 10:00 P.M. OPEN CLASS AND 4-H EXHIBIT BUILDING CLOSE
- 10:00 P.M. COMMERCIAL BUILDINGS CLOSE
- 10:00 P.M. ROUND BARN CLOSE

SATURDAY, JULY 27 (PRIMEBANK AND KROESE & KROESE PC CPA DAY)

- B&R CHAINSAW SCULPTURES BY BLAIR SMITH AND SCOTTY TOBEN DAILY
- 8:30 A.M. 4-H & FFA SWINE SHOW - COVERED ARENA
- 9:00 A.M. OPEN DRAFT HORSE & MULE SHOW - HORSE ARENA
- 9:00 A.M. 4-H EXHIBIT BUILDING OPEN
- 9:00 A.M. CLOVER BUDDIES POULTRY SHOW FOLLOWED BY THE 4-H & FFA POULTRY SHOW - RABBIT BARN
- 9:00 A.M. - 8:00 P.M. DAILY ACTIVITIES IN KIDDIE BARN
- 9:00 - 11:30 A.M. OPEN SHEEP SHOW CHECK IN
- 10:00 A.M. "AROUND THE FARM IN THE BARN" - ROUND BARN OPENS
- 10:00 A.M. OPEN CLASS EXHIBITS OPEN
- 10:30 A.M. KIDS' DAY - CENTURY HALL
- 12:00 P.M. COMMERCIAL EXHIBIT BUILDINGS OPEN
- 12:00 P.M. BLAIR HOUSE OPEN
- 12:00 - 8:00 P.M. LEGO BOOTH - LEGO DEPOT
- 12:00 - 9:00 P.M. DOUBLE V PONY RIDES - NEAR KIDDIE BARN
- 1:00 - 5:00 P.M. REDUCED MIDWAY RIDES
- 1:00 P.M. 4-H & FFA CAT SHOW - RABBIT BARN
- 2:00-4:00 P.M. 4-H STOMPING GROUND, ACTIVITIES/GAMES FOR 4-H MEMBERS
- 2:00 P.M. OPEN PET SHOW CHECK-IN IN RABBIT BARN
- 2:00 P.M. LIFE SKILLS QUILT AUCTION - CENTURY HALL
- TBD OPEN SHEEP SHOW FOLLOWING 4-H & FFA SWINE SHOW
- 2:30 P.M. 4-H/FFA PET SHOW FOLLOWED WITH OPEN PET SHOW IN RABBIT BARN
- 3:00 P.M. DEADLINE FOR RABBIT, POULTRY, MEAT GOAT, DAIRY GOAT, DAIRY COW, SWINE, SHEEP & BEEF RIBBON AUCTION SIGN UP
- 3:00 P.M. MILKING DEMO (NEAR KIDDIE BARN)
- 4:00 P.M. GRAND CHAMPION PHOTOS OF SMALL ANIMALS (RABBITS & POULTRY)
- 5:00 P.M. MILKING DEMO (NEAR KIDDIE BARN)
- 6:00 P.M. 4-H & FFA SHARE THE FUN - CENTURY HALL
- 6:30 P.M. DEMO DERBY - GRANDSTAND
- 7:00 P.M. MILKING DEMO (NEAR KIDDIE BARN)
- 9:00 P.M. BLAIR HOUSE CLOSE
- 10:00 P.M. OPEN CLASS AND 4-H EXHIBIT BUILDING CLOSE
- 10:00 P.M. COMMERCIAL BUILDINGS CLOSE
- 10:00 P.M. ROUND BARN CLOSE

SUNDAY, JULY 28 (NORTHWEST BANK OF LE MARS AND AGRIVISION EQUIPMENT DAY)

- B&R CHAINSAW SCULPTURES BY BLAIR SMITH AND SCOTTY TOBEN DAILY
- 8:00 - 10:00 A.M. 4-H & FFA FEEDER CALF WEIGH-IN - SCALE HOUSE
- 8:00 - 10:00 A.M. OPEN FEEDER CALF & PLYMOUTH COUNTY CLUB CALF CLASSIC WEIGH-IN - SCALE HOUSE
- 9:00 A.M. - 8:00 P.M. DAILY ACTIVITIES IN KIDDIE BARN
- 10:00 A.M. OPEN FUN DAY HORSE SHOW - HORSE ARENA
- 10:00 A.M. CHURCH SERVICE - CENTURY HALL
- 11:00 A.M. LE MARS CHURCH OF CHRIST SERVICE - PIONEER VILLAGE
- 11:30 A.M. BILL RILEY SHOW CHECK-IN
- 12:00 P.M. BILL RILEY SHOW-CENTURY HALL
- 12:00 - 8:00 P.M. LEGO BOOTH - LEGO DEPOT
- 12:00 P.M. OPEN CLASS, BLAIR HOUSE, 4-H EXHIBIT BUILDING, AND "AROUND THE FARM IN THE BARN" - ROUND BARN OPENS
- 12:00 P.M. 4-H & FFA COW CALF SHOW - COVERED ARENA
- 12:30 P.M. 4-H & FFA FEEDER CALF SHOW - COVERED ARENA FOLLOWED BY OPEN FEEDER CALF SHOW - COVERED ARENA FOLLOWED BY PLYMOUTH COUNTY CLUB CALF CLASSIC
- 1:00 P.M. COMMERCIAL EXHIBIT BUILDINGS OPEN
- 1:00 - 5:00 P.M. REDUCED MIDWAY RIDES
- 2:00 P.M. LIFE SKILLS COW CHIP BINGO - EAST OF CLOCK TOWER
- 2:00 - 9:00 P.M. DOUBLE V PONY RIDES - NEAR KIDDIE BARN
- 3:00 P.M. MILKING DEMO (NEAR KIDDIE BARN)
- 3:15 P.M. 4-H PRIDE OF IOWA - CENTURY HALL - JUDGING BEGINS (4-H'ERS ONLY)
- 4:00 P.M. 4-H PRIDE OF IOWA - OPEN TO PUBLIC
- 4:30 P.M. FAIR AUCTION INCLUDING WOOD CARVINGS - PIONEER VILLAGE
- 5:00 P.M. MILKING DEMO (NEAR KIDDIE BARN)
- 6:00 P.M. RELEASE BUCKET CALVES, BOTTLE GOATS, AND BOTTLE LAMBS
- 7:00 P.M. MILKING DEMO (NEAR KIDDIE BARN)
- 7:00 P.M. FIGURE 8 RACING GRANDSTAND
- 7:00 P.M. COMMERCIAL EXHIBIT BUILDINGS CLOSE
- 7:00 - 8:00 P.M. OPEN CLASS EXHIBITS RELEASED (NOT 4-H EXHIBITS)
- 9:00 P.M. BLAIR HOUSE, ROUND BARN & 4-H BUILDING CLOSE

All events FREE with fair admission!

WWW.PLYMOUTHCOUNTYFAIR.ORG



All events FREE with fair admission!

Pioneer Village Entertainment

WEDNESDAY, JULY 24 (JENSEN MOTORS AND FARMERS COOP, CRAIG DAY)

5:30 P.M. MCEWYN BAND SPONSORED BY JENSEN MOTORS
6:40 P.M. OPENING CEREMONY/FLAG RAISING
6:45 P.M. 4-H FOUNDATION DONOR CEREMONY
7:00 P.M. KING AND QUEEN CROWNING
8:00 P.M. MCEWYN BAND SPONSORED BY FARMERS COOP, CRAIG

THURSDAY, JULY 25 (AMERICAN BANK DAY)

5:00 P.M. DUE NORTH, ACAPELLA SPONSORED BY BODEANS BAKING GROUP
6:15 P.M. THE NADAS SPONSORED BY NORTHWEST REC
7:30 P.M. DUE NORTH, ACAPELLA SPONSORED BY AMERICAN BANK
8:45 P.M. THE NADAS SPONSORED BY L&D ELECTRIC, IRETON

FRIDAY, JULY 26 (PLYMOUTH COUNTY FARM BUREAU DAY)

12:00 P.M. CENTRAL DANCE ACADEMY DANCE PERFORMANCE
5:00 P.M. BRENT HUSMANN, HYPNOTIST SPONSORED BY PEOPLE'S BANK
6:15 P.M. A.C. JONES, COUNTRY SINGER SPONSORED BY NW IOWA CREDIT UNION
7:30 P.M. BRENT HUSMANN, HYPNOTIST SPONSORED BY CENTRAL VALLEY AG
8:45 P.M. A.C. JONES, COUNTRY SINGER SPONSORED BY IOWA STATE BANK



Grand Stand Entertainment

WEDNESDAY, JULY 24
7:00 P.M. CAMPBELL'S ELECTRIC MOTOCROSS RACES
THURSDAY, JULY 25
6:30 P.M. TUFF TRUCK CONTEST
FRIDAY, JULY 26
6:00 P.M. TRACTOR PULL
SATURDAY, JULY 27
6:30 P.M. DEMO DERBY
SUNDAY, JULY 28
7:00 P.M. FIGURE 8 RACING

SATURDAY, JULY 27 (PRIMEBANK AND KROESE & KROESE PC CPA DAY)

2:00 P.M. MENACE, CLASSIC ROCK SPONSORED BY REMSEN FARMERS COOP
3:15 P.M. BRENT HUSMANN, HYPNOTIST SPONSORED BY TITAN MACHINERY OF LE MARS
4:15 P.M. MENACE, CLASSIC ROCK SPONSORED BY PR CONSTRUCTION AND SCHMIDT FARM & SEED
5:30 P.M. BRENT HUSMANN, HYPNOTIST SPONSORED BY KROESE & KROESE PC CPA
6:30 P.M. MENACE, CLASSIC ROCK SPONSORED BY CHANNEL SEED, KEITH KOERSELMAN
8:00 P.M. JASON PRITCHETT, COUNTRY SINGER SPONSORED BY PRIMEBANK

SUNDAY, JULY 28 (NORTHWEST BANK OF LE MARS AND AGRIVISION EQUIPMENT DAY)

11:00 A.M. LE MARS CHURCH OF CHRIST SERVICE
3:00 P.M. LE MARS JAMMERS SPONSORED BY LE MARS TOY STORE AND WIATEL COMMUNICATIONS
4:30 P.M. AUCTION OF CHAIN SAW CARVINGS SPONSORED BY TOTAL MOTORS
6:00 P.M. THE BROWNS, FAMILY MUSIC GROUP SPONSORED BY NORTHWEST BANK OF LE MARS
7:00 P.M. LE MARS JAMMERS SPONSORED BY AGRIVISION EQUIPMENT
8:00 P.M. THE BROWNS, FAMILY MUSIC GROUP SPONSORED BY MIDSTATES BANK

Kids Stage Entertainment

THURSDAY, JULY 25 SPONSORED BY CENTRAL VALLEY AG
6:00 P.M., 8:00 P.M. LOS MORALITOS CIRCUS
FRIDAY, JULY 26 SPONSORED BY PEPSI COLA OF SIOUXLAND
6:00 P.M., 8:00 P.M. LOS MORALITOS CIRCUS
SATURDAY, JULY 27 SPONSORED BY EDWARD JONES
4:00 P.M., 6:00 P.M., 8:00 P.M. LOS MORALITOS CIRCUS
SUNDAY, JULY 28 SPONSORED BY MARCUS LUMBER COMPANY
4:00 P.M., 6:00 P.M., 8:00 P.M. LOS MORALITOS CIRCUS

Covered Show Arena Entertainment

THURSDAY, JULY 25 SPONSORED BY FIRST COOPERATIVE ASSOCIATION & MARK CROP INSURANCE
6:30 P.M. FARM OLYMPICS
FRIDAY, JULY 26
7:00 P.M. IMPACT PRO WRESTLING

2019 PLYMOUTH COUNTY FAIR

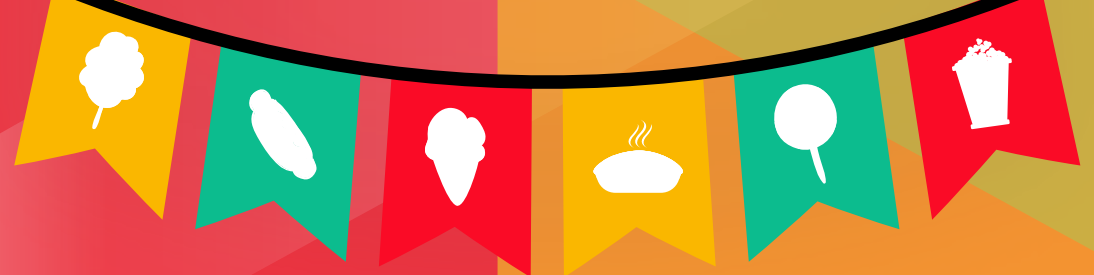
July 24-28
LE MARS, IOWA



2018 PLYMOUTH COUNTY FAIR KING & QUEEN

Plymouth County 4-H and Agricultural Society Charitable Trust
251 12th Street SE
Le Mars, IA 51031
NON PROFIT ORG
U.S. POSTAGE PAID
PERMIT NO. 29
LE MARS, IA 51031
*****ECRWSEDDM*****
LOCAL POSTAL CUSTOMER

The Best 5 Days of SUMMER



Look inside for Family Fun!