

## The End Result

The Livestock Auction on Friday at the Fair is the final step in the project and the result of all the hard work. At this auction everyone hopes to receive better prices than the current market prices because of the effort they have put forth and also the costs involved in the learning process. Having community support makes it possible for the youth to receive recognition and the motivation to earn and save for the future. Many youth go through this opportunity and come out as great leaders, educators, and responsible citizens.

## What's In It For You?

Your purchase commitment is the best way to encourage the youth to continue learning about Agriculture, Business & Hard Work. You also get positive advertisement, tax deductions and GREAT QUALITY MEAT! Various factors affect the final processed cuts you will receive but the final delivery to you is high quality, cut trimmed and freezer-packaged meat.

## How much meat will you get?

Each animal will yield differing amounts based on final weight, breed, finish, and cuts preferred. For example:

**BEEF** - A 1,200 lb. steer will yield approximately 558 lbs. of dressed out meat.

**PORK** - A 240 lb. pig yields about 132 lbs. of dressed meat.

## SHOW DATES & TIMES

@ Fairgrounds Tilton Arena

### Swine Show

Tuesday, March, 22 @ 6 pm

### Steer Show

Wednesday, March, 23 @ 7 pm

## BUYER'S DINNER



America's Most Convenient Bank®

Friday, March 25 @ 5pm

By Invitation Only  
@ Putnam County Shrine Club  
116 Yelvington Road  
East Palatka, FL 32131

## LIVESTOCK AUCTION

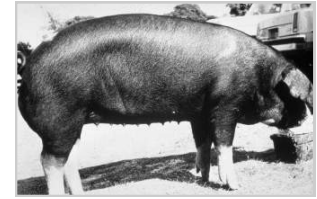
Fri., Mar. 25 @ 7p  
Tilton Arena @ Fairgrounds

\*If you are unable to attend the buyer's dinner  
The youth will be available in the barns before  
the sale to speak with you.

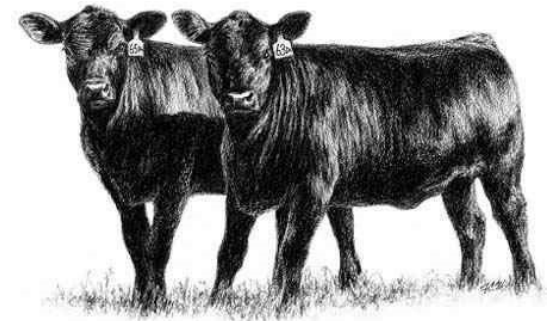
Putnam County Fair Office  
386-328-FAIR (3247)  
PutnamFairAndExpo.com



2022



Livestock  
Buyer Information



SUPPORT  
THE FUTURE  
OF OUR  
4H & FFA  
YOUTH



## Your support helps build Practical Life Skills of the future business leaders of tomorrow!

The Youth Exhibitors that participate in the Putnam County Fair Market Live-stock Projects make a HUGE commitment. They work very hard for up to a year on these projects. Participation is a big decision as it requires:

- Dedication
- Sacrifice
- Keeping and submitting a Detailed Record Book
- Attending an in-depth educational meeting
- Taking a test of project knowledge

Some of the skills and lessons the exhibitors learn are:

- Responsibility
- Caregiving
- Budgeting
- Detailed Record Keeping
- Priorities
- Consequences
- Meeting Deadlines
- Sales & Marketing
- Presentation
- Confidence
- Real-life lessons in small business venture



## Purchase Options

- ◆ Purchase an animal, keep the meat for yourself
- ◆ Co-Purchase animal to share with your friends, family or employees.
- ◆ Purchase an animal and donate the meat to the charity of your choice.
- ◆ Purchase an animal then assign the animal for resale. Resale means a packer will purchase your animal. Resale price will be determined prior to the sale and will be listed on the buyer's sheet  
\*\* You will not get any packaged meat with this option. Example:

250lb (weight of animal)

X 1.50 (price of your bid)

\$375 (total amount paid to the youth)

250lb (weight of animal)

X 0.40 (Market Price)

\$100 (total amount packer will pay)

\$375 (total amount paid to the youth)

- \$100 (total amount packer will pay)

\$275 (total amount YOU OWE)

## Please Note

- ◆ *We request you pay for your purchase on sale night (we accept Cash, Check or Credit Card (small service fee applies))*
- ◆ *Processing fees will be paid upon pick up of order. This fee covers slaughter, cutting, wrapping, freezing and disposals. The approximate amount for a steer is around \$350 and for a pig it is around \$125.*

## PROCESSORS

- \* You will be given paperwork upon your purchase on Sale Night. You will need to select your processor at this time.
- \* All auction animals must go to slaughter. NO EXCEPTIONS
- \* These processors will take steer and swine.
- \* Some of these processors make a trip locally to deliver your meat.

**North Florida Custom Meats**  
Lake Butler ~ (386) 496-2276

**Roger's Processing**  
Lake Butler ~ (386) 867-5665

**Braddock's**  
Seville ~ (386) 749-4322

**Nettles Sausage, Inc.**  
Lake City ~ (386) 752-2510

**Osteen's Meat Service, Inc.**  
Clermont ~ (352) 394-6465

**Thank you for  
your generous  
support!**

Putnam County Fair Office  
386-328-FAIR (3247)  
PutnamFairAndExpo.com