

BEFORE YOU SUBMIT YOUR ENTRY Carefully review this guide as it contains all of the applicable information regarding the exact rules and deadlines for this specific category, ensuring you are entering the correct classes in advance. When you submit your entry online you are agreeing that you understand the rules and regulations.

ENTRIES ACCEPTED ONLINE ShoWorks will be available on Monday, January 1, 2026

SHOWWORKS If you plan to make changes to your entries or need to leave ShoWorks at any time - **SAVE YOUR CART before exiting!** Once you select **PAY NOW**, your entry will be submitted, and you will not be able to make changes to your cart online.

PAYMENT: Credit card payments are the preferred method to enter your exhibit. If you would like to pay with cash or check, select **PAY Code** and print out your detailed receipt and mail it in, or hand deliver your payment to the

Riverside County Fair & NDF Entry Office
46-350 Arabia Street, Indio, CA 92201

LAST DAY TO ENTER ONLINE - NO EXCEPTIONS! Monday, January 19, 2026
Any entry or payment submitted past the deadline will not be accepted!



JR LIVESTOCK DEPARTMENT

Kelly Secord - Supervisor

Text 909.844.8073

rcflivestock@gmail.com

POULTRY

ARRIVAL

ALL BIRDS MUST GO TO INSPECTION UPON
ARRIVAL

Wednesday, February 11 – 4 pm to 5 pm
Livestock Barn #4

JUDGING

(SHOWMANSHIP THEN BREEDING)

Sunday, February 14
Livestock Pavilion #12

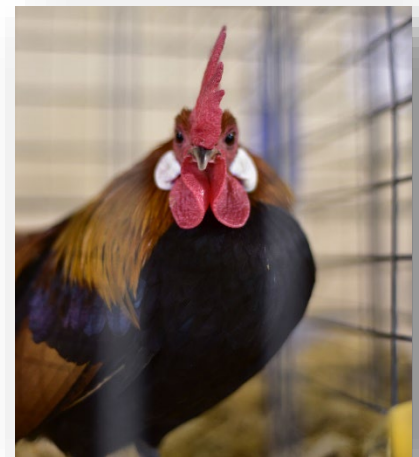


POULTRY

SPECIAL RULES & GUIDELINES

1. Poultry divisions are open to all exhibitors 9 - 19 years old. Poultry exhibitors 5 - 8 years old may only enter in Primary classes.
2. All birds must go to poultry inspection upon arrival.
3. Limit of twenty (20) birds per exhibitor.
4. Judging shall be by comparison and in accordance with the latest published standards.
5. Exhibitors or their agents will not be permitted to converse with the judges while judging is in progress.
6. All birds must be 6 months or older except Meat Pens.
7. All birds must be numbered with legible numbered bands before inspection at the Fair. The number for this band must match the one entered online. Duplicate numbers must not be used on birds of the same variety.
8. Substitutions can only be made within the same division as the original entry.
9. No FOR SALE signs are permitted.
10. All crates must be removed from the showroom as soon as the birds are transferred to the show coops.
11. All birds will be shown in suitable coops (long-tailed Bantam Males will be provided with large coops). The right is reserved to double-coop females of the same variety owned by one exhibitor.
12. Eggs laid will become the property of the Fair.
13. All Exhibits are entered and shown at the owner's risk. The Riverside County Fair & National Date Festival is not responsible for loss by fire, accident, theft, or providential destruction. Every precaution will be taken to eliminate danger and mistakes in the handling and return of the stock.
14. Any bird with evidence of external parasites or disease arriving in the showroom will be immediately removed from the showroom and will not be judged.
15. The Riverside County Fair & National Date Festival reserves the right to cancel the poultry show on the status of the Newcastle outbreak.
16. All exhibitors must provide food and water containers. Feed not provided by Fair.
17. Birds to be cared for by the exhibitor.
18. If your birds need to be released after the show, please check in with the livestock superintendent.

POULTRY DEFINITIONS	
OVER ONE (1) YEAR	UNDER ONE (1) YEAR
Cock & Hen	Cockerel & Pullet
Old Drake & Duck	Young Drake & Duck
Old Gander & Goose	Young Gander & Goose
Old Tom & Hen	Young Tom & Hen
A.S.V. - Any Standard Variety	
A.O.S.B. - Any Other Standard Breed	
A.O.S.V. - Any Other Standard Variety	



LARGE POULTRY

AMERICAN BREEDS:

DIVISION 1300 - PLYMOUTH ROCK ^{A.S.V.}

DIVISION 1301 - RHODE ISLAND ^{A.S.V.}

DIVISION 1302 - WYANDOTTE ^{A.S.V.}

DIVISION 1303 - AMERICAN BREED ^{A.O.S.V.}

ASIATIC BREEDS:

DIVISION 1304 - COCHIN ^{A.S.V.}

DIVISION 1305 - ASIATIC BREED ^{A.O.S.V.}

ENGLISH BREEDS:

DIVISION 1306 - AUSTRALORPS

DIVISION 1307 - CORNISH ^{A.S.V.}

DIVISION 1308 - ORPINGTONS ^{A.S.V.}

DIVISION 1309 - ENGLISH BREED ^{A.O.S.V.}

BANTAMS

MODERN GAME:

DIVISION 1316 - A.S.V.

OLD ENGLISH GAME:

DIVISION 1317 - A.S.V.

SINGLE COMB - CLEAN-LEGGED:

DIVISION 1318 - JAPANESE ^{A.S.V.}

DIVISION 1319 - LEGHORNS ^{A.S.V.}

DIVISION 1320 - PLYMOUTH ROCK ^{A.S.V.}

DIVISION 1321 - RHODE ISLAND ^{A.S.V.}

DIVISION 1322 - A.O.S.B.

ROSE COMB - CLEAN-LEGGED:

DIVISION 1323 - RHODE ISLAND

DIVISION 1324 - ROSE COMB ^{A.S.V.}

DIVISION 1325 - SEBRIGHT ^{A.S.V.}

DIVISION 1326 - WYANDOTTE ^{A.S.V.}

DIVISION 1327 - A.O.S.B.

MEDITERRANEAN BREEDS:

DIVISION 1310 - LEGHORNS ^{A.S.V.}

DIVISION 1311 - MEDITERRANEAN BREED ^{A.O.S.V.}

CONTINENTAL BREEDS:

DIVISION 1312 - POLISH ^{A.S.V.}

DIVISION 1313 - HAMBURG ^{A.S.V.}

DIVISION 1314 - CONTINENTAL ^{A.O.S.V.}

UTILITY DIVISION:

DIVISION 1315 - ANY UTILITY BREED

CLASS:

1. Cock - Over one (1) year
2. Hen - Over one (1) year
3. Cockerel - Under one (1) year
4. Pullet - Under one (1) year

FEATHERED LEGGED:

DIVISION 1328 - COCHIN ^{BLACK}

DIVISION 1329 - COCHIN ^{WHITE}

DIVISION 1330 - COCHIN ^{A.S.V.}

DIVISION 1331 - FRIZZLES ^{A.S.V.}

DIVISION 1332 - SILKIES ^{WHITE (BEARDED OR NON-BEARDED)}

DIVISION 1333 - SILKIES ^{A.O.S.V.}

DIVISION 1334 - A.O.S.B.

ALL OTHER CLEAN-LEGGED:

DIVISION 1335 - CORNISH ^{A.S.V.}

DIVISION 1336 - POLISH ^{A.S.V.}

DIVISION 1337 - ANY OTHER COMB

CLEAN LEGGED

DIVISION 1338 - ANY NON-STANDARD BREED

CLASS:

1. Cock - Over one (1) year
2. Hen - Over one (1) year
3. Cockerel - Under one (1) year
4. Pullet - Under one (1) year

TURKEYS

DIVISION 1339 - A.S.V.

CLASS:

1. Old Tom – Over one (1) year
2. Old Hen - Over one (1) year
3. Young Tom - Under one (1) year
4. Young Hen - Under one (1) year

DUCKS

DIVISION 1340 - A.S.V.

CLASS:

1. Old Drake – Over one (1) year
2. Old Duck - Over one (1) year
3. Young Drake - Under one (1) year
4. Young Duck - Under one (1) year

GEESE

DIVISION 1341 - A.S.V.

CLASS:

1. Old Gander – Over one (1) year
2. Old Goose - Over one (1) year
3. Young Gander - Under one (1) year
4. Young Goose - Under one (1) year

DIVISION 1342 – GUINEAS A.O.V.

CLASS:

1. Cock
2. Hen
3. Cockerel
4. Pullet

PRIMARY POULTRY DIVISION

SPECIAL RULES & GUIDELINES

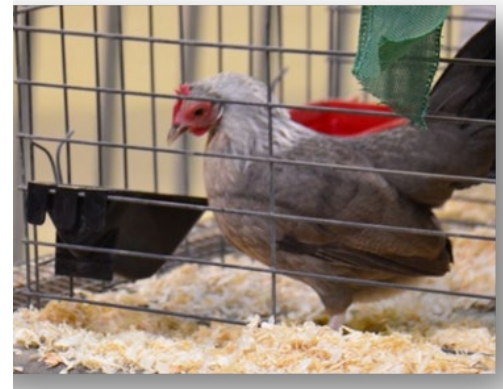
1. Open to exhibitors 5 – 8 years old
2. DANISH SYSTEM OF JUDGING

DIVISION 1343 – PRIMARY POULTRY

CLASS:

1. Breed
2. Showmanship
3. Poster

PREMIUMS OFFERED		
1st Place \$4	2nd Place \$3	3rd Place \$2
Grand Champion Award		Reserve Champion Award
Large Bird Champion Award		Bantam Champion Award
Waterfowl Champion Award		Turkey Champion Award
ENTRY FEE: \$3 per entry		
CHAMPION AWARDS WILL BE AWARDED IN DIVISIONS WITH AT LEAST FIVE (5) BIRDS		



AWARDS OFFERED
All Participants Ribbon
NO ENTRY FEE

EGGS

SPECIAL RULES & GUIDELINES

1. Three (3) entries in each class, per exhibitor.
2. An entry shall consist of twelve (12) hen eggs in a carton.
3. Exhibits will be received at Poultry Building during cooping times.
4. All eggs become the property of the Fair.
5. Eggs will be judged on interior and exterior quality.
6. The judge reserves the right to break eggs; if it is deemed advisable in order to properly judge the exhibit.

PREMIUMS OFFERED		
1st Place	2nd Place	3rd Place
\$30	\$28	\$26
4th Place	5th Place	6th Place
\$24	\$22	\$21
ENTRY FEE: \$10 per entry		

DIVISION 1344 - WHITE EGGS

DIVISION 1345 - BROWN & TINT EGGS

CLASS:

1. Small
2. Medium
3. Large
4. Extra Large

Scorecards for Judging Eggs

Size - 25 points
Interior Quality & Size of Air Cell - 25 points
Interior Quality & Opacity - 25 points
Condition of Shell - 8 points
Uniformity of Size & Shape - 5 points
Shell Texture - 5 points
Uniformity of Color - 4 points
Shape - 3 points

POULTRY MEAT PEN

SPECIAL RULES & GUIDELINES

1. Open to FFA and 4-H members of Riverside County enrolled in the poultry project who are 9 - 19 years old.
2. Exhibitors 5 to 8 years of age as of January 1, 2026, may participate as independent exhibitors in the Market Turkey and the Poultry Meat Pen division
3. Primary exhibitors are NOT eligible to exhibit Meat Pens
4. Champion Meat Pens remain on the fairgrounds and are sold at the Junior Livestock Auction
5. Poultry Meat Pen Weights
 - Three (3) Birds; 5 1/2 - 7 1/2 lbs. each; Six (6) weeks (42 days - 43 days)
6. Market Turkey Weights
 - Hens; 16 - 29 lbs. each; 17 weeks - 22 weeks
 - Toms; 25 - 40 lbs. each; 17 weeks - 22 weeks

DIVISION 1346 - POULTRY MEAT PEN

CLASS:

1. FFA
2. 4-H
3. Grange
4. Independent

AWARDS OFFERED

Grand Champion Rosette
Reserve Grand Champion Rosette
ENTRY FEE: \$15 per entry

DIVISION 1347- MARKET TURKEY

CLASS:

1. FFA
2. 4-H
3. Grange
4. Independent



POULTRY SHOWMANSHIP CONTEST

SPECIAL RULES & GUIDELINES

1. Poultry must be owned by the exhibitor and entered into the proper class
2. Showmanship will be on Saturday, February 15
3. A first-time showmanship exhibitor may show as a novice or their specific age class, but not both
4. AMERICAN SYSTEM OF JUDGING

DIVISION 1348 - POULTRY SHOWMANSHIP

CLASS:

1. Novice - Never shown in showmanship: 9 - 19 years old
2. Junior - 9 - 11 years old
3. Intermediate - 12 - 13 years old
4. Senior - 14 - 19 years old
5. FFA Novice - 1st Year Member
6. FFA Advanced

AWARDS OFFERED

1st Place Award & Rosette	2nd Place Ribbon	
3rd Place Ribbon	4th Place Ribbon	5th Place Ribbon
ENTRY FEE \$5		

POULTRY POSTER CONTEST

SPECIAL RULES & GUIDELINES

1. One entry per exhibitor
2. Posters must be standard size poster board 22 x 28 labeled with exhibitors' name & address on back
3. Posters will not be released until, February 15 - by 6:00 p.m.
4. Posters must include two (2) or more of the following:
 - Drawing or painting of breed or variety
 - Information about a breed or variety
 - Information about Large Poultry
 - Information about Bantam
 - Information about Waterfowl
 - Information about Turkeys
 - Information about Utility Poultry
 - Information about the origin of a breed
 - Special Uses of a breed or variety

AWARDS OFFERED

1st Place Award & Rosette	2nd Place Ribbon	
3rd Place Ribbon	4th Place Ribbon	5th Place Ribbon
ENTRY FEE: \$5		

DIVISION 1349 - POULTRY POSTER

CLASS:

Scorecards for Judging Posters

Education Value 25%

Design 25%

Neatness 25%

Originality 25%

1. 9 - 12 years old
2. 13 - 15 years old
3. 16 - 19 years old

