

San Bernardino County Fair

Youth Rabbit Show

ENTRIES CLOSE MAY 1, 2023 AT 11:59 PM

New for 2023

The San Bernardino County fair will be partnering with RCRBA to host an additional show for Open Rabbits, Youth Rabbits, Youth Cavy, and Open Cavy. All entries in the San Bernardino County fair will be entered in the RCRBA show. Animals not entered in the San Bernardino County fair will not be eligible for the RCRBA show. Exhibitors will pay a \$3.50 entry fee per animal directly to RCRBA at check-in time on the day of the show (Sunday, May 28th).

This is an official American Rabbit Breeders Association-sanctioned YOUTH show.
A.R.B.A. National Convention
PO Box 5667
Bloomington, IL 61702

Open to all youth, ages 5 through 18
THIS IS A ONE DAY CARRY IN SHOW

SHOW RULES, DEFINITIONS, AND JUDGING PROCEDURES AS PRESCRIBED IN THE LATEST EDITION OF THE STANDARD OF PERFECTION OF THE AMERICAN RABBIT BREEDERS ASSOCIATION, INC., SHALL APPLY TO SAN BERNARDINO COUNTY FAIR, PROVIDED THEY DO NOT CONFLICT WITH ANY RULES AND REGULATIONS PRESCRIBED BY THE DEPARTMENT OF FOOD AND AGRICULTURE. PLEASE READ ALL RULES CAREFULLY. FAILURE TO RECOGNIZE ANY OR ALL RULES WILL EXCLUDE ENTRY.

LOCAL RULES

1. ALL RABBITS AND CAVIES MUST BE IDENTIFIED BY PERMANENT EAR MARKINGS IN THE LEFT EAR AT THE TIME OF ENTRY. NO EXCEPTIONS. ANY DUPLICATION OF EAR MARKINGS BY ONE EXHIBITOR IN THE SAME CLASS OR ILLEGIBLE EAR MARKINGS WILL ELIMINATE/CAUSE ENTRIES TO BE DISQUALIFIED.
2. UNHEALTHY ANIMALS WILL NOT BE ACCEPTED AND IF ANY ANIMAL SHOULD BECOME SICK WHILE IN THE SHOW, THEY MUST BE IMMEDIATELY REMOVED BY THE EXHIBITOR.
3. ANIMALS WILL BE SHOWN AND JUDGED IN THE PROPER DIVISION AND CLASS FOR BREED VARIETY, AGE, AND SEX ONLY. IF NO CLASS IS OFFERED NO AWARDS MAY BE MADE. RABBITS & CAVIES THAT ARE DISQUALIFIED FOR BEING ENTERED IN THE WRONG CLASS AND THOSE ABSENT AT THE TIME OF JUDGING DO NOT COUNT WHEN COMPUTING THE NUMBER OF EXHIBITS IN THE CLASS.
4. ALL EXHIBITS ARE ENTERED AND SHOWN AT THE OWNER'S RISK.
5. PRECAUTIONS WILL BE TAKEN TO ELIMINATE DANGER AND MISTAKES IN HANDLING AND RETURN OF THE STOCK. THE SAN BERNARDINO COUNTY FAIR MANAGEMENT OR ITS REPRESENTATIVES WILL NOT BE RESPONSIBLE FOR ANY LOSS, DAMAGE, ACCIDENT, OR DEATH OF ANY EXHIBIT DURING THE SHOW OR IN TRANSIT.
6. A JUDGE MAY ELIMINATE (EXCUSE) A RABBIT FROM COMPETITION BECAUSE OF TEMPORARY OR CURABLE DEFECTS BUT THE RABBIT & CAVY SHOULD BE COUNTED AS AN ENTRY.
7. RABBITS ARE ENTERED BY AGE AND BY WEIGHT - PLEASE WEIGH YOUR RABBITS PRIOR TO ENTRY! OVERWEIGHT JUNIORS AND INTERMEDIATES MAY BE ENTERED INTO THE SENIOR CLASS. UNDERWEIGHT SENIORS MAY NOT BE ENTERED INTO THE JUNIOR OR INTERMEDIATE CLASSES. NO RABBIT MAY BE ENTERED INTO A CLASS LOWER THAN ITS TRUE AGE. CONSULT THE ARBA STANDARD OF PERFECTION IF YOU HAVE ANY QUESTIONS.
8. ALL EXHIBITS MUST BE THE BONA FIDE PROPERTY OF THE EXHIBITOR.

SPECIAL RULES

ELIGIBILITY: JUNIOR DEPARTMENT RABBIT & CAVY ENTRIES ARE OPEN TO YOUTH AGES 5 THROUGH 18.
AS OF 1/1/23

1. ENTRY LIMIT: THERE IS NO LIMIT TO ENTRIES; HOWEVER, NO EXHIBITOR SHALL RECEIVE MORE THAN TWO CASH AWARDS IN ANY ONE CLASS. STATE RULE IV-6.
2. ENTRY: ENTRIES MUST BE MADE ONLINE. PLEASE LIST BREED, SHOW COLOR VARIETY, AND EAR NUMBERS.
3. SUBSTITUTIONS: SUBSTITUTIONS MAY BE MADE ONLY IN THE SAME DIVISION OF THE ORIGINAL ENTRY DUE. SEE STATE RULE II-5. A PENALTY OF \$5.00 MUST BE PAID PRIOR TO JUDGING FOR EACH SUBSTITUTION MADE BY THE EXHIBITOR MORE THAN TWO.
4. NO PROVISIONS WILL BE MADE FOR THE CARE OF ANIMALS AFTER THE TIME FOR REMOVAL HAS ENDED. PLEASE GET RELEASE FORMS FOR YOUR ANIMALS, AND AN ATTENDANT WILL CHECK YOUR ANIMALS AND RELEASE FORM BEFORE YOU MAY EXIT.
5. HANDLING OF EXHIBITS: NO PERSON OTHER THAN THE OWNER WILL BE PERMITTED TO HANDLE EXHIBITS DURING JUDGING WITHOUT THE PERMISSION OF SHOW OFFICIALS. THIS IS A YOUTH SHOW. EXHIBITORS ARE EXPECTED TO CARRY THEIR OWN ANIMALS TO AND FROM THE JUDGING TABLE WITH MINIMAL ASSISTANCE FROM PARENTS, LEADERS, AND OTHER ADULTS. PLEASE LISTEN CAREFULLY FOR YOUR CLASS TO BE CALLED. NO CLASSES WILL BE REJUDGED FOR MISSING ANIMALS! ONLY ANIMALS PROPERLY ENTERED WILL BE PERMITTED IN THE SHOW.
6. NO SALE OF RABBITS OR CAVIES WILL BE ALLOWED ON FAIRGROUNDS. NO EXCEPTIONS!
7. ALL AWARDS WILL BE PASSED OUT AT THE TIME THE EXHIBITS ARE RELEASED. NO EXCEPTIONS!

San Bernardino County Fair

Youth Rabbit Show

ENTRIES CLOSE MAY 1, 2023 AT 11:59 PM

THIS IS A ONE DAY CARRY IN SHOW

ENTRY FEE: \$5.00

AWARDS OFFERED PER CLASS

1 ST	2 ND	3 RD	4 TH	5 TH
\$7	\$6	\$5	\$4	\$3

BEST IN SHOW

RESERVE IN SHOW

ALL BEST OF BREED & BEST OPPOSITE-RIBBON

AMERICAN SYSTEM OF JUDGING

SENIOR BUCK & SENIOR DOE: 8 MONTHS OF AGE AND OVER

INTERMEDIATE BUCK & INTERMEDIATE DOE: 6 MONTHS TO 8 MONTHS

JUNIOR BUCK & JUNIOR DOE: UNDER 6 MONTHS OF AGE

**INDICATES HEAVY WEIGHT BREEDS

HEAVY WEIGHT CLASSES

- | | |
|----------------------|---------------------|
| 1. SENIOR BUCK | 4. SENIOR DOE |
| 2. INTERMEDIATE BUCK | 5. INTERMEDIATE DOE |
| 3. JUNIOR BUCK | 6. JUNIOR DOE |

SENIOR BUCK & SENIOR DOE: 6 MONTHS OF AGE AND OVER

JUNIOR BUCK & JUNIOR DOE: UNDER 6 MONTHS OF AGE

LIGHT WEIGHT BREEDS

- | | |
|----------------|---------------|
| 1. SENIOR BUCK | 3. SENIOR DOE |
| 2. JUNIOR BUCK | 4. JUNIOR DOE |

DIVISION #	BREED	VARIETY	DIVISION #	BREED	VARIETY
900	AMERICAN**	BLUE	928	DUTCH	BLUE
901	AMERICAN**	WHITE	929	DUTCH	CHINCHILLA
902	AMERICAN CHINCHILLA**	STANDARD	930	DUTCH	CHOCOLATE
903	AMERICAN FUZZY LOP	BROKEN	931	DUTCH	GRAY
904	AMERICAN FUZZY LOP	SOLID	932	DUTCH	STEEL
905	AMERICAN SABLE	STANDARD	933	DUTCH	TORTOISE
906	ARGENTE BRUN**	STANDARD	934	DWARF HOTOT	BLACK/CHOCOLATE
907	BELGIAN HARE	TAN	935	ENGLISH ANGORA	COLORED
908	BELGIAN HARE	RUFUS	936	ENGLISH ANGORA	WHITE
909	BEVEREN**	BLACK	937	ENGLISH LOP**	BROKEN
910	BEVEREN**	BLUE	938	ENGLISH LOP**	SOLID
911	BEVEREN**	WHITE	939	ENGLISH SPOT	BLACK
912	BLANC D'HOTOT**	STANDARD	940	ENGLISH SPOT	BLUE
913	BRITANNIA PETITE	BLACK	941	ENGLISH SPOT	CHOCOLATE
914	BRITANNIA PETITE	BLACK OTTER	942	ENGLISH SPOT	GOLD
915	BRITANNIA PETITE	BLUE EYED WHITE	943	ENGLISH SPOT	GRAY
916	BRITANNIA PETITE	BROKEN	944	ENGLISH SPOT	LILAC
917	BRITANNIA PETITE	CHESTNUT AGOUTI	945	ENGLISH SPOT	TORTOISE
918	BRITANNIA PETITE	RUBY EYED WHITE	946	FLEMISH GIANT**	BLACK
919	BRITANNIA PETITE	SABLE MARTEN	947	FLEMISH GIANT**	BLUE
920	BRITANNIA PETITE	SIAMESE SABLE	948	FLEMISH GIANT**	FAWN
921	CALIFORNIAN**	STANDARD	949	FLEMISH GIANT**	LIGHT GRAY
922	CHAMPAGNE D'ARGENT**	STANDARD	950	FLEMISH GIANT**	SANDY
923	CHECKERED GIANT**	BLACK	951	FLEMISH GIANT**	STEEL GRAY
924	CHECKERED GIANT**	BLUE	952	FLEMISH GIANT**	WHITE
925	CINNAMON**	STANDARD	953	FLORIDA WHITE	STANDARD
926	CRÈME D'ARGENT**	STANDARD	954	FRENCH ANGORA	COLORED
927	DUTCH	BLACK	955	FRENCH ANGORA	WHITE

San Bernardino County Fair

Youth Rabbit Show

ENTRIES CLOSE MAY 1, 2023 AT 11:59 PM

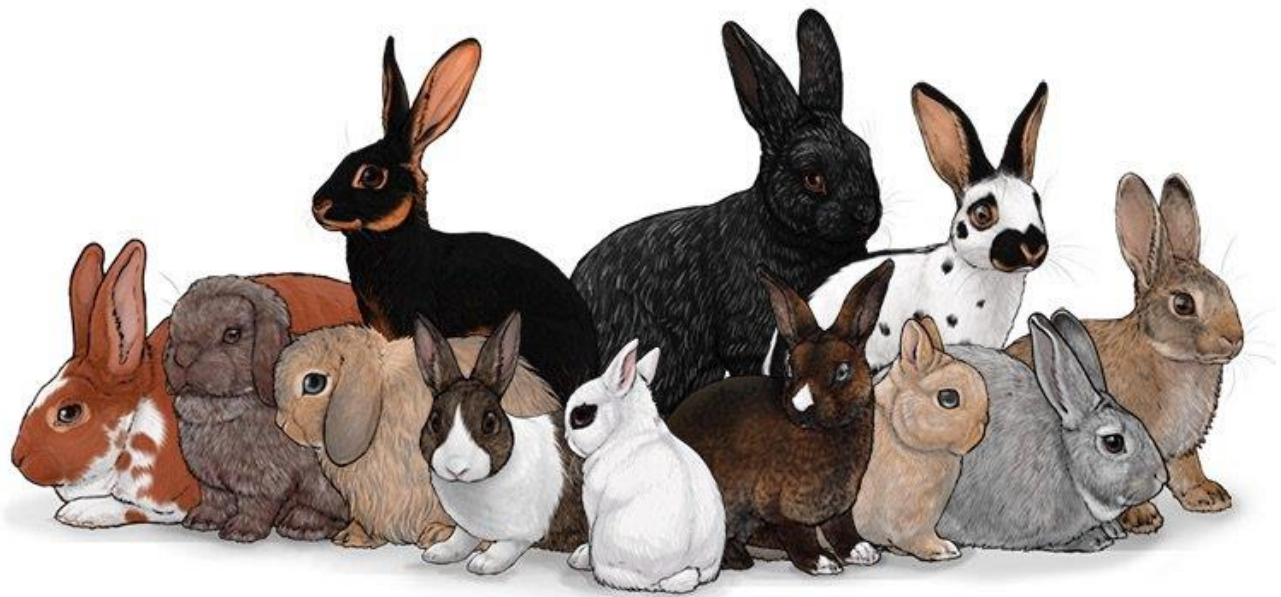
DIVISION #	BREED	VARIETY	DIVISION #	BREED	VARIETY
956	FRENCH LOP**	BROKEN	1006	MINI REX	WHITE
957	FRENCH LOP**	SOLID	1007	MINI SATIN	BLACK
958	GIANT ANGORA**	STANDARD	1008	MINI SATIN	BLUE
959	GIANT CHINCHILLA**	STANDARD	1009	MINI SATIN	BROKEN
960	HARLEQUIN	JAPANESE	1010	MINI SATIN	CHINCHILLA
961	HARLEQUIN	MAGPIE	1011	MINI SATIN	CHOCOLATE
962	HAVANA	BLACK	1012	MINI SATIN	CHOCOLATE AGOUTI
963	HAVANA	BLUE	1013	MINI SATIN	COPPER
964	HAVANA	BROKEN	1014	MINI SATIN	HIMALAYAN
965	HAVANA	CHOCOLATE	1015	MINI SATIN	OPAL
966	HAVANA	LILAC	1016	MINI SATIN	OTTER
967	HIMALAYAN	BLACK	1017	MINI SATIN	RED
968	HIMALAYAN	BLUE	1018	MINI SATIN	SIAMESE
969	HIMALAYAN	CHOCOLATE	1019	MINI SATIN	SILVER MARTEN
970	HIMALAYAN	LILAC	1020	MINI SATIN	SQUIRREL
971	HOLLAND LOP	BROKEN	1021	MINI SATIN	TORTOISE
972	HOLLAND LOP	SOLID	1022	MINI SATIN	WHITE
973	JERSEY WOOLY	AGOUTI	1023	NETHERLAND DWARF	GR.1-BLACK
974	JERSEY WOOLY	AOV	1024	NETHERLAND DWARF	GR.1-BLUE
975	JERSEY WOOLY	BROKEN	1025	NETHERLAND DWARF	GR.1-CHOCOLATE
976	JERSEY WOOLY	SELF	1026	NETHERLAND DWARF	GR.1-LILAC
977	JERSEY WOOLY	SHADED	1027	NETHERLAND DWARF	GR.1-BLUE EYED WHITE
978	JERSEY WOOLY	TAN PATTERN	1028	NETHERLAND DWARF	GR.1-RUBY EYED WHITE
979	LILAC	PATTERN	1029	NETHERLAND DWARF	GR.2-SABLE POINT
980	LIONHEAD	CHOCOLATE	1030	NETHERLAND DWARF	GR.2-SIAMESE SABLE
981	LIONHEAD	RUBY EYED WHITE	1031	NETHERLAND DWARF	GR.2-SIAMESE SMOKE PEARL
982	LIONHEAD	SIAMESE SABLE	1032	NETHERLAND DWARF	GR.2-TORTOISE SHELL
983	LIONHEAD	SEAL	1033	NETHERLAND DWARF	GR.2-BLUE TORTOISE SHELL
984	LIONHEAD	TORTOISE	1034	NETHERLAND DWARF	GR.3-CHESTNUT
985	MINI LOP	BROKEN	1035	NETHERLAND DWARF	GR.3-CHINCHILLA
986	MINI LOP	SOLID	1036	NETHERLAND DWARF	GR.3-LYNX
987	MINI REX	BLACK	1037	NETHERLAND DWARF	GR.3-OPAL
988	MINI REX	BLUE	1038	NETHERLAND DWARF	GR.3-SQUIRREL
989	MINI REX	BLUE EYED WHITE	1039	NETHERLAND DWARF	GR.4-OTTER
990	MINI REX	BROKEN	1040	NETHERLAND DWARF	GR.4-SABLE MARTEN
991	MINI REX	CASTOR	1041	NETHERLAND DWARF	GR.4-SILVER MARTEN
992	MINI REX	CHINCHILLA	1042	NETHERLAND DWARF	GR.4-SMOKE PEARL MARTEN
993	MINI REX	CHOCOLATE	1043	NETHERLAND DWARF	GR.4-TAN
994	MINI REX	HIMALAYAN	1044	NETHERLAND DWARF	GR.5-BROKEN
995	MINI REX	LILAC	1045	NETHERLAND DWARF	GR.5-FAWN
996	MINI REX	LYNX	1046	NETHERLAND DWARF	GR.5-HIMALAYAN
997	MINI REX	OPAL	1047	NETHERLAND DWARF	GR.5-ORANGE
998	MINI REX	OTTER	1048	NETHERLAND DWARF	GR.5-STEEL
999	MINI REX	RED	1049	NEW ZEALAND**	BLACK
1000	MINI REX	SABLE	1050	NEW ZEALAND**	BLUE
1001	MINI REX	SABLE POINT	1051	NEW ZEALAND**	BROKEN
1002	MINI REX	SEAL	1052	NEW ZEALAND**	RED
1003	MINI REX	SILVER MARTEN	1053	NEW ZEALAND**	WHITE
1004	MINI REX	SMOKE PEARL	1054	PALOMINO**	GOLDEN
1005	MINI REX	TORTOISE	1055	PALOMINO**	LYNX

San Bernardino County Fair

Youth Rabbit Show

ENTRIES CLOSE MAY 1, 2023 AT 11:59 PM

DIVISION #	BREED	VARIETY	DIVISION #	BREED	VARIETY
1056	POLISH	BLACK	1081	SATIN**	BLUE
1057	POLISH	BLUE	1082	SATIN**	BROKEN
1058	POLISH	BROKEN	1083	SATIN**	CALIFORNIAN
1059	POLISH	CHOCOLATE	1084	SATIN**	CHINCHILLA
1060	POLISH	BLUE EYED WHITE	1085	SATIN**	CHOCOLATE
1061	POLISH	RUBY EYED WHITE	1086	SATIN**	COPPER
1062	REX	AMBER	1087	SATIN**	OTTER
1063	REX	BLACK	1088	SATIN**	RED
1064	REX	BLUE	1089	SATIN**	SIAMESE
1065	REX	BROKEN	1090	SATIN**	WHITE
1066	REX	CALIFORNIAN	1091	SATIN ANGORA	COLORED
1067	REX	CASTOR	1092	SATIN ANGORA	WHITE
1068	REX	CHINCHILLA	1093	SILVER	BLACK
1069	REX	CHOCOLATE	1094	SILVER	BROWN
1070	REX	LILAC	1095	SILVER	FAWN
1071	REX	LYNX	1096	SILVER FOX**	BLACK
1072	REX	OPAL	1097	SILVER MARTEN	BLACK
1073	REX	OTTER	1098	SILVER MARTEN	BLUE
1074	REX	RED	1099	SILVER MARTEN	CHOCOLATE
1075	REX	SABLE	1100	SILVER MARTEN	SABLE
1076	REX	SEAL	1101	STANDARD CHINCHILLA	STANDARD
1077	REX	WHITE	1102	TAN	BLACK
1078	RHINELANDER	BLACK	1103	TAN	BLUE
1079	RHINELANDER	BLUE	1104	TAN	CHOCOLATE
1080	SATIN**	BLACK	1105	TAN	LILAC
			1106	THRianta	STANDARD



San Bernardino County Fair
Youth Rabbit Show
ENTRIES CLOSE MAY 1, 2023 AT 11:59 PM

FUR DIVISION

ENTRY FEE: \$5.00
AWARDS OFFERED PER CLASS

1 ST	2 ND	3 RD	4 TH	5 TH
\$7	\$6	\$5	\$4	\$3

RULES

1. RABBITS MUST HAVE BEEN SHOWN IN BREED CLASS.
2. DISQUALIFIED OR ELIMINATED ANIMALS CANNOT COMPETE IN FUR AND WOOL.
3. DUPLICATION OF EAR MARKINGS IS ACCEPTED ON ANIMALS OF DIFFERENT BREEDS IN FUR AND WOOL.
4. NO SUBSTITUTION MAY BE MADE IN FUR OR WOOL UNLESS A SUBSTITUTION IS MADE IN THE BREED CLASS. FUR ENTRIES MUST BE ENTERED ONLINE AS A SEPARATE ENTRY. THE ABSENCE OF EARMARKING ON THE ENTRY WILL DISQUALIFY THE RABBIT FROM THE COMPETITION.

DIVISION 1110 – FUR

CLASS: (BREED & VARIETY)

- 1 BREED FUR-COLORED
- 2 BREED FUR-WHITE
- 3 COMMERCIAL NORMAL FUR-COLORED
- 4 COMMERCIAL NORMAL FUR-WHITE

****Exhibitor must name Breed and Variety on the entry when making an entry in the division.

San Bernardino County Fair
Youth Rabbit Show
ENTRIES CLOSE MAY 1, 2023 AT 11:59 PM

RABBIT MEAT PENS

ENTRY FEE: \$15.00 PER PEN

Open to San Bernardino County Youth Only 5-19 years of age

Exhibitors are required to make the processing arrangements and coordinate the delivery to their buyers.

Rabbit Meat Pen Rules:

2022 ONLY: The top 20 Rabbit Meat pens will sell in the sale. Sale order and sale selection will be chosen by the judge.

1. Entry consists of three rabbits all of the same breed, any variety.
2. Three rabbits will count as one Rabbit Entry for this division only.
3. Actual Date of Birth & each Rabbit Tattoo number must be shown on the entry. Bill of Sale must be submitted at check-in.
4. Only Rabbit Meat Pens judged to be market and consumer-ready (equivalent to Group 1 grade) will be eligible to compete in all Championships.
5. All Champion and Reserve Champion Meat Pens
6. All exhibitors that are 5 to 8 yrs. of age shall show as independent.
7. Limit of two entries per exhibitor for Rabbit Meat Pens.

Special Award
Supreme Grand Champion
Res. Supreme Grand Champion

Rabbit Age Limit: Maximum of 10 weeks

Weight Limit: Each rabbit in a pen must weigh 3.5 lbs. to 5.5 lbs.

Division 1115—Rabbit Meat Pen

Classes:

1. 4-H Rabbit Meat Pen
2. FFA Rabbit Meat Pen
3. Grange Rabbit Meat Pen
4. Independent Rabbit Meat Pen

San Bernardino County Fair

Youth Rabbit Show

ENTRIES CLOSE MAY 1, 2023 AT 11:59 PM

RABBIT SHOWMANSHIP

Rabbit showmanship is open to San Bernardino County exhibitors only.

ENTRY FEE: \$5.00

AWARDS OFFERED PER CLASS

1 ST	2 ND	3 RD	4 TH	5 TH
\$7	\$6	\$5	\$4	\$3

1. SHOWMANSHIP ENTRY MUST BE MADE IN THE SAME FORM AS RABBIT ENTRY.
2. RABBIT MUST BE OWNED BY THE PARTICIPANT AND ENTERED AND SHOWN IN THE PROPER CLASS IN THIS SHOW.
3. SHOWMANSHIP IS OPEN TO ANY RABBIT EXHIBITOR FROM SAN BERNARDINO COUNTY.
4. UNIFORMS ARE REQUIRED.
5. LONG SLEEVES ARE REQUIRED.

DIVISION 1111- RABBIT SHOWMANSHIP CLASS

1. Beginners - Ages 5 thru 8 (No Entry Fee or Premiums, Judged Danish)
2. Junior- Ages 9 thru 10 years
3. Intermediate - Ages 11 thru 13 years
4. Senior - Ages 14 years and above