

San Bernardino County Fair

Youth Rabbit Show

ENTRIES CLOSE May 18, 2025, AT 11:59 PM

The San Bernardino County Fair will partner with RCRBA to host 2 additional shows for Open Rabbits and Youth Rabbits. All entries in the San Bernardino County fair will be entered in the RCRBA show. Animals not entered in the San Bernardino County fair will not be eligible for the RCRBA show. Exhibitors will pay an \$8 entry fee per animal, directly to RCRBA at check-in time on the day of the show (Sunday, May 24, 2026).

This is an official American Rabbit Breeders Association-sanctioned YOUTH show.
A.R.B.A. National Convention
PO Box 5667
Bloomington, IL 61702

Open to all youth, ages 5 through 18

THIS IS A ONE-DAY CARRY-IN SHOW

SHOW RULES, DEFINITIONS, AND JUDGING PROCEDURES AS PRESCRIBED IN THE LATEST EDITION OF THE STANDARD OF PERFECTION OF THE AMERICAN RABBIT BREEDERS ASSOCIATION, INC., SHALL APPLY TO SAN BERNARDINO COUNTY FAIR, PROVIDED THEY DO NOT CONFLICT WITH ANY RULES AND REGULATIONS PRESCRIBED BY THE DEPARTMENT OF FOOD AND AGRICULTURE. PLEASE READ ALL RULES CAREFULLY. FAILURE TO RECOGNIZE ANY OR ALL RULES WILL EXCLUDE ENTRY.

LOCAL RULES

1. ALL RABBITS AND CAVIES MUST BE IDENTIFIED BY PERMANENT EAR MARKINGS IN THE LEFT EAR AT THE TIME OF ENTRY. NO EXCEPTIONS. ANY DUPLICATION OF EAR MARKINGS BY ONE EXHIBITOR IN THE SAME CLASS OR ILLEGIBLE EAR MARKINGS WILL ELIMINATE/CAUSE ENTRIES TO BE DISQUALIFIED.
2. UNHEALTHY ANIMALS WILL NOT BE ACCEPTED AND IF ANY ANIMAL SHOULD BECOME SICK WHILE IN THE SHOW, THEY MUST BE IMMEDIATELY REMOVED BY THE EXHIBITOR.
3. ANIMALS WILL BE SHOWN AND JUDGED IN THE PROPER DIVISION AND CLASS FOR BREED VARIETY, AGE, AND SEX ONLY. IF NO CLASS IS OFFERED NO AWARDS MAY BE MADE. RABBITS & CAVIES THAT ARE DISQUALIFIED FOR BEING ENTERED IN THE WRONG CLASS AND THOSE ABSENT AT THE TIME OF JUDGING DO NOT COUNT WHEN COMPUTING THE NUMBER OF EXHIBITS IN THE CLASS.
4. ALL EXHIBITS ARE ENTERED AND SHOWN AT THE OWNER'S RISK.
5. PRECAUTIONS WILL BE TAKEN TO ELIMINATE DANGER AND MISTAKES IN HANDLING AND RETURN OF THE STOCK. THE SAN BERNARDINO COUNTY FAIR MANAGEMENT OR ITS REPRESENTATIVES WILL NOT BE RESPONSIBLE FOR ANY LOSS, DAMAGE, ACCIDENT, OR DEATH OF ANY EXHIBIT DURING THE SHOW OR IN TRANSIT.
6. A JUDGE MAY ELIMINATE (EXCUSE) A RABBIT FROM COMPETITION BECAUSE OF TEMPORARY OR CURABLE DEFECTS BUT THE RABBIT & CAVY SHOULD BE COUNTED AS AN ENTRY.
7. RABBITS ARE ENTERED BY AGE AND BY WEIGHT - PLEASE WEIGH YOUR RABBITS PRIOR TO ENTRY! OVERWEIGHT JUNIORS AND INTERMEDIATES MAY BE ENTERED INTO THE SENIOR CLASS. UNDERWEIGHT SENIORS MAY NOT BE ENTERED INTO THE JUNIOR OR INTERMEDIATE CLASSES. NO RABBIT MAY BE ENTERED INTO A CLASS LOWER THAN ITS TRUE AGE. CONSULT THE ARBA STANDARD OF PERFECTION IF YOU HAVE ANY QUESTIONS.
8. ALL EXHIBITS MUST BE THE BONA FIDE PROPERTY OF THE EXHIBITOR.

SPECIAL RULES

ELIGIBILITY: JUNIOR DEPARTMENT RABBIT & CAVY ENTRIES ARE OPEN TO YOUTH AGES 5 THROUGH 18.

AS OF 1/1/26

ENTRY LIMIT: THERE IS NO LIMIT TO ENTRIES; HOWEVER, NO EXHIBITOR SHALL RECEIVE MORE THAN TWO CASH AWARDS IN ANY ONE CLASS. STATE RULE IV-6.

1. ENTRY: ENTRIES MUST BE MADE ONLINE. PLEASE LIST BREED, SHOW COLOR VARIETY, AND EAR NUMBERS.
2. SUBSTITUTIONS: SUBSTITUTIONS MAY BE MADE ONLY IN THE SAME DIVISION OF THE ORIGINAL ENTRY DUE. SEE STATE RULE II-5. A PENALTY OF \$5.00 MUST BE PAID PRIOR TO JUDGING FOR EACH SUBSTITUTION MADE BY THE EXHIBITOR MORE THAN TWO.
3. NO PROVISIONS WILL BE MADE FOR THE CARE OF ANIMALS AFTER THE TIME FOR REMOVAL HAS ENDED. PLEASE GET RELEASE FORMS FOR YOUR ANIMALS, AND AN ATTENDANT WILL CHECK YOUR ANIMALS AND THE RELEASE FORM BEFORE YOU MAY EXIT.
4. HANDLING OF EXHIBITS: NO PERSON OTHER THAN THE OWNER WILL BE PERMITTED TO HANDLE EXHIBITS DURING JUDGING WITHOUT THE PERMISSION OF SHOW OFFICIALS. THIS IS A YOUTH SHOW. EXHIBITORS ARE EXPECTED TO CARRY THEIR OWN ANIMALS TO AND FROM THE JUDGING TABLE WITH MINIMAL ASSISTANCE FROM PARENTS, LEADERS, AND OTHER ADULTS. PLEASE LISTEN CAREFULLY FOR YOUR CLASS TO BE CALLED. NO CLASSES WILL BE REJUDGED FOR MISSING ANIMALS! ONLY ANIMALS PROPERLY ENTERED WILL BE PERMITTED IN THE SHOW.
5. NO SALE OF RABBITS OR CAVIES WILL BE ALLOWED ON FAIRGROUNDS. NO EXCEPTIONS!
6. ALL AWARDS WILL BE PASSED OUT AT THE TIME THE EXHIBITS ARE RELEASED. NO EXCEPTIONS!

San Bernardino County Fair

Youth Rabbit Show

ENTRIES CLOSE May 18, 2025, AT 11:59 PM

THIS IS A ONE-DAY CARRY-IN SHOW

ENTRY FEE: \$5.00

AWARDS OFFERED PER CLASS

1 ST	2 ND	3 RD	4 TH	5 TH
\$7	\$6	\$5	\$4	\$3

BEST IN SHOW

RESERVE IN SHOW

ALL BEST OF BREED & BEST OPPOSITE-RIBBON

AMERICAN SYSTEM OF JUDGING

SENIOR BUCK & SENIOR DOE: 8 MONTHS OF AGE AND OVER

INTERMEDIATE BUCK & INTERMEDIATE DOE: 6 MONTHS TO 8 MONTHS

JUNIOR BUCK & JUNIOR DOE: UNDER 6 MONTHS OF AGE

**INDICATES HEAVY WEIGHT BREEDS

HEAVY WEIGHT CLASSES

- | | |
|----------------------|---------------------|
| 1. SENIOR BUCK | 4. SENIOR DOE |
| 2. INTERMEDIATE BUCK | 5. INTERMEDIATE DOE |
| 3. JUNIOR BUCK | 6. JUNIOR DOE |

SENIOR BUCK & SENIOR DOE: 6 MONTHS OF AGE AND OVER

JUNIOR BUCK & JUNIOR DOE: UNDER 6 MONTHS OF AGE

LIGHT WEIGHT BREEDS

- | | |
|----------------|---------------|
| 1. SENIOR BUCK | 3. SENIOR DOE |
| 2. JUNIOR BUCK | 4. JUNIOR DOE |

BREED	VARIETY	BREED	VARIETY
AMERICAN**	BLUE	DUTCH	BLUE
AMERICAN**	WHITE	DUTCH	CHINCHILLA
AMERICAN CHINCHILLA**	STANDARD	DUTCH	CHOCOLATE
AMERICAN FUZZY LOP	BROKEN	DUTCH	GRAY
AMERICAN FUZZY LOP	SOLID	DUTCH	STEEL
AMERICAN SABLE	STANDARD	DUTCH	TORTOISE
ARGENTE BRUN**	STANDARD	DWARF HOTOT	BLACK/CHOCOLATE
BELGIAN HARE	TAN	ENGLISH ANGORA	COLORED
BELGIAN HARE	RUFUS	ENGLISH ANGORA	WHITE
BEVEREN**	BLACK	ENGLISH LOP**	BROKEN
BEVEREN**	BLUE	ENGLISH LOP**	SOLID
BEVEREN**	WHITE	ENGLISH SPOT	BLACK
BLANC D'HOTOT**	STANDARD	ENGLISH SPOT	BLUE
BRITANNIA PETITE	BLACK	ENGLISH SPOT	CHOCOLATE
BRITANNIA PETITE	BLACK OTTER	ENGLISH SPOT	GOLD
BRITANNIA PETITE	BLUE EYED WHITE	ENGLISH SPOT	GRAY
BRITANNIA PETITE	BROKEN	ENGLISH SPOT	LILAC
BRITANNIA PETITE	CHESTNUT AGOUTI	ENGLISH SPOT	TORTOISE
BRITANNIA PETITE	RUBY EYED WHITE	FLEMISH GIANT**	BLACK
BRITANNIA PETITE	SABLE MARTEN	FLEMISH GIANT**	BLUE
BRITANNIA PETITE	SIAMESE SABLE	FLEMISH GIANT**	FAWN
CALIFORNIAN**	STANDARD	FLEMISH GIANT**	LIGHT GRAY
CHAMPAGNE D'ARGENT**	STANDARD	FLEMISH GIANT**	SANDY
CHECKERED GIANT**	BLACK	FLEMISH GIANT**	STEEL GRAY
CHECKERED GIANT**	BLUE	FLEMISH GIANT**	WHITE
CINNAMON**	STANDARD	FLORIDA WHITE	STANDARD
CRÈME D'ARGENT**	STANDARD	FRENCH ANGORA	COLORED
DUTCH	BLACK	FRENCH ANGORA	WHITE

San Bernardino County Fair

Youth Rabbit Show

ENTRIES CLOSE May 18, 2025, AT 11:59 PM

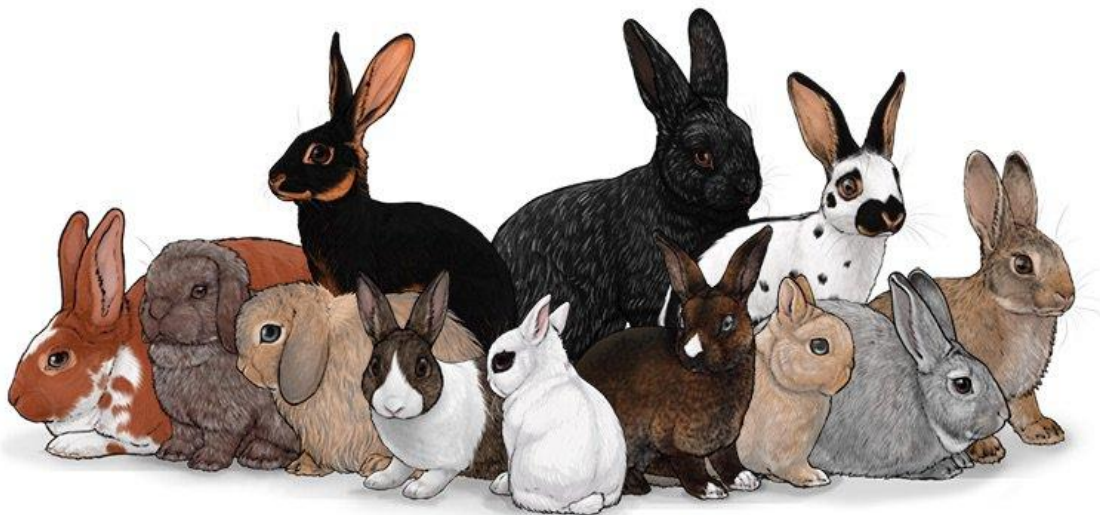
BREED	VARIETY	BREED	VARIETY
FRENCH LOP**	BROKEN	MINI REX	WHITE
FRENCH LOP**	SOLID	MINI SATIN	BLACK
GIANT ANGORA**	STANDARD	MINI SATIN	BLUE
GIANT CHINCHILLA**	STANDARD	MINI SATIN	BROKEN
HARLEQUIN	JAPANESE	MINI SATIN	CHINCHILLA
HARLEQUIN	MAGPIE	MINI SATIN	CHOCOLATE
HAVANA	BLACK	MINI SATIN	CHOCOLATE AGOUTI
HAVANA	BLUE	MINI SATIN	COPPER
HAVANA	BROKEN	MINI SATIN	HIMALAYAN
HAVANA	CHOCOLATE	MINI SATIN	OPAL
HAVANA	LILAC	MINI SATIN	OTTER
HIMALAYAN	BLACK	MINI SATIN	RED
HIMALAYAN	BLUE	MINI SATIN	SIAMESE
HIMALAYAN	CHOCOLATE	MINI SATIN	SILVER MARTEN
HIMALAYAN	LILAC	MINI SATIN	SQUIRREL
HOLLAND LOP	BROKEN	MINI SATIN	TORTOISE
HOLLAND LOP	SOLID	MINI SATIN	WHITE
JERSEY WOOLY	AGOUTI	NETHERLAND DWARF	GR.1-BLACK
JERSEY WOOLY	AOV	NETHERLAND DWARF	GR.1-BLUE
JERSEY WOOLY	BROKEN	NETHERLAND DWARF	GR.1-CHOCOLATE
JERSEY WOOLY	SELF	NETHERLAND DWARF	GR.1-LILAC
JERSEY WOOLY	SHADED	NETHERLAND DWARF	GR.1-BLUE EYED WHITE
JERSEY WOOLY	TAN PATTERN	NETHERLAND DWARF	GR.1-RUBY EYED WHITE
LILAC	PATTERN	NETHERLAND DWARF	GR.2-SABLE POINT
LIONHEAD	CHOCOLATE	NETHERLAND DWARF	GR.2-SIAMESE SABLE
LIONHEAD	RUBY EYED WHITE	NETHERLAND DWARF	GR.2-SIAMESE SMOKE PEARL
LIONHEAD	SIAMESE SABLE	NETHERLAND DWARF	GR.2-TORTOISE SHELL
LIONHEAD	SEAL	NETHERLAND DWARF	GR.2-BLUE TORTOISE SHELL
LIONHEAD	TORTOISE	NETHERLAND DWARF	GR.3-CHESTNUT
MINI LOP	BROKEN	NETHERLAND DWARF	GR.3-CHINCHILLA
MINI LOP	SOLID	NETHERLAND DWARF	GR.3-LYNX
MINI REX	BLACK	NETHERLAND DWARF	GR.3-OPAL
MINI REX	BLUE	NETHERLAND DWARF	GR.3-SQUIRREL
MINI REX	BLUE EYED WHITE	NETHERLAND DWARF	GR.4-OTTER
MINI REX	BROKEN	NETHERLAND DWARF	GR.4-SABLE MARTEN
MINI REX	CASTOR	NETHERLAND DWARF	GR.4-SILVER MARTEN
MINI REX	CHINCHILLA	NETHERLAND DWARF	GR.4-SMOKE PEARL MARTEN
MINI REX	CHOCOLATE	NETHERLAND DWARF	GR.4-TAN
MINI REX	HIMALAYAN	NETHERLAND DWARF	GR.5-BROKEN
MINI REX	LILAC	NETHERLAND DWARF	GR.5-FAWN
MINI REX	LYNX	NETHERLAND DWARF	GR.5-HIMALAYAN
MINI REX	OPAL	NETHERLAND DWARF	GR.5-ORANGE
MINI REX	OTTER	NETHERLAND DWARF	GR.5-STEEL
MINI REX	RED	NEW ZEALAND**	BLACK
MINI REX	SABLE	NEW ZEALAND**	BLUE
MINI REX	SABLE POINT	NEW ZEALAND**	BROKEN
MINI REX	SEAL	NEW ZEALAND**	RED
MINI REX	SILVER MARTEN	NEW ZEALAND**	WHITE
MINI REX	SMOKE PEARL	PALOMINO**	GOLDEN
MINI REX	TORTOISE	PALOMINO**	LYNX

San Bernardino County Fair Youth Rabbit Show

ENTRIES CLOSE May 18, 2025, AT 11:59 PM

BREED	VARIETY	BREED	VARIETY
POLISH	BLACK	SATIN**	BLUE
POLISH	BLUE	SATIN**	BROKEN
POLISH	BROKEN	SATIN**	CALIFORNIAN
POLISH	CHOCOLATE	SATIN**	CHINCHILLA
POLISH	BLUE EYED WHITE	SATIN**	CHOCOLATE
POLISH	RUBY EYED WHITE	SATIN**	COPPER
REX	AMBER	SATIN**	OTTER
REX	BLACK	SATIN**	RED
REX	BLUE	SATIN**	SIAMESE
REX	BROKEN	SATIN**	WHITE
REX	CALIFORNIAN	SATIN ANGORA	COLORED
REX	CASTOR	SATIN ANGORA	WHITE
REX	CHINCHILLA	SILVER	BLACK
REX	CHOCOLATE	SILVER	BROWN
REX	LILAC	SILVER	FAWN
REX	LYNX	SILVER FOX**	BLACK
REX	OPAL	SILVER MARTEN	BLACK
REX	OTTER	SILVER MARTEN	BLUE
REX	RED	SILVER MARTEN	CHOCOLATE
REX	SABLE	SILVER MARTEN	SABLE
REX	SEAL	STANDARD CHINCHILLA	STANDARD
REX	WHITE	TAN	BLACK
RHINELANDER	BLACK	TAN	BLUE
RHINELANDER	BLUE	TAN	CHOCOLATE
SATIN**	BLACK	TAN	LILAC
		THRIANTA	STANDARD

NOT ALL BREEDS AND VARIETIES ARE LISTED ABOVE. HOWEVER, THE BREEDS AND VARIETIES ARE UP TO DATE IN SHOWWORKS!



San Bernardino County Fair
Youth Rabbit Show
ENTRIES CLOSE May 18, 2025, AT 11:59 PM

FUR DIVISION

ENTRY FEE: \$5.00
AWARDS OFFERED PER CLASS

1 ST	2 ND	3 RD	4 TH	5 TH
\$7	\$6	\$5	\$4	\$3

RULES

1. RABBITS MUST HAVE BEEN SHOWN IN A BREED CLASS.
2. DISQUALIFIED OR ELIMINATED ANIMALS CANNOT COMPETE IN FUR AND WOOL.
3. DUPLICATION OF EAR MARKINGS IS ACCEPTED ON ANIMALS OF DIFFERENT BREEDS IN FUR AND WOOL.
4. NO SUBSTITUTION MAY BE MADE IN FUR OR WOOL UNLESS A SUBSTITUTION IS MADE IN THE BREED CLASS. FUR ENTRIES MUST BE ENTERED ONLINE AS A SEPARATE ENTRY. THE ABSENCE OF EARMARKING ON THE ENTRY WILL DISQUALIFY THE RABBIT FROM THE COMPETITION.

DIVISION – FUR

CLASS: (BREED & VARIETY)

- 1 BREED FUR-COLORED
- 2 BREED FUR-WHITE
- 3 COMMERCIAL NORMAL FUR-COLORED
- 4 COMMERCIAL NORMAL FUR-WHITE

****Exhibitor must name Breed and Variety on the entry when making an entry in the division.

San Bernardino County Fair
Youth Rabbit Show
ENTRIES CLOSE May 18, 2025, AT 11:59 PM

RABBIT MEAT PENS

ENTRY FEE: \$15.00 PER PEN

Open to San Bernardino County Youth, only 5-19 years of age

Exhibitors are required to make the necessary arrangements for processing and coordinate delivery to their buyers.

Rabbit Meat Pen Rules:

The top 20 Rabbit Meat pens will sell in the sale. The sale order and sale selection will be chosen by the judge.

1. Entry consists of three rabbits, all of the same breed, any variety.
2. Three rabbits will count as one Rabbit Entry for this division only.
3. Actual Date of Birth & each Rabbit Tattoo number must be shown on the entry. Bill of Sale must be submitted at check-in.
4. Only Rabbit Meat Pens judged to be market and consumer-ready (equivalent to Group 1 grade) will be eligible to compete in all Championships.
5. All Champion and Reserve Champion Meat Pens
6. All exhibitors that are 5 to 8 years of age shall show as independent.
7. Limit of two entries per exhibitor for Rabbit Meat Pens.
8. Must be Purbred

Special Award
Supreme Grand Champion
Res. Supreme Grand Champion

Rabbit Age Limit: Maximum of 10 weeks
Weight Limit: Each rabbit in a pen must weigh 3 1/2 lbs. to 5 1/2 lbs.

Division—Rabbit Meat Pen

Classes:

1. 4-H Rabbit Meat Pen
2. FFA Rabbit Meat Pen
3. Grange Rabbit Meat Pen
4. Independent Rabbit Meat Pen

San Bernardino County Fair
Youth Rabbit Show
ENTRIES CLOSE May 18, 2025, AT 11:59 PM

RABBIT SHOWMANSHIP

ENTRY FEE: \$5.00

AWARDS OFFERED PER CLASS

1 ST	2 ND	3 RD	4 TH	5 TH
\$7	\$6	\$5	\$4	\$3

1. SHOWMANSHIP ENTRY MUST BE MADE IN THE SAME FORM AS RABBIT ENTRY.
2. RABBIT MUST BE OWNED BY THE PARTICIPANT AND ENTERED AND SHOWN IN THE PROPER CLASS IN THIS SHOW.
3. SHOWMANSHIP IS OPEN TO ANY RABBIT EXHIBITOR FROM SAN BERNARDINO COUNTY.
4. UNIFORMS ARE REQUIRED.
5. LONG SLEEVES ARE REQUIRED.

DIVISION - RABBIT SHOWMANSHIP
CLASS

1. Beginners - Ages 5 through 8 (No Entry Fee or Premiums, Judged Danish) does not compete in master showmanship.
2. Junior- Ages 9 through 10 years (as of Jan.1st of the current year)
3. Intermediate - Ages 11 through 13 years (as of Jan.1st of the current year)
4. Senior - Ages 14 years and above (as of Jan.1st of the current year)