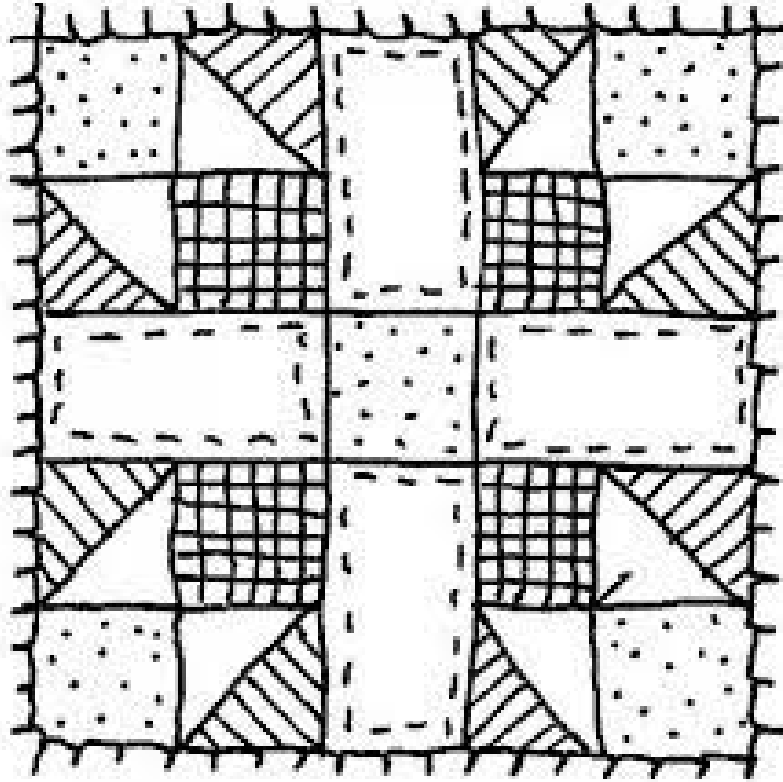


Salinas Valley Fair



2024 Premium Book

Table of Contents

Board of Directors	3
How to Enter the Fair	4
Dates to know	4
Schedule of Still Events	5
Local/General Rules	7
Agriculture-Horticulture (Commercial Vegetable Competition	9
Floriculture	12
Home Arts	20
Arts and Crafts	29
Photography	31
Industrial Arts & Technology	33
FFA Exhibits Mech/Ag Engineering & Ag Science	34
4-H Still Exhibits	40
Livestock Judging	46
Vegetable and other Judging	47

80th Annual Salinas Valley Fair

May 16-19, 2024

The Salinas Valley Fair Board would like to thank the Monterey County Board of Supervisors

John M. Phillips, Christopher Lopez, Wendy Root-Askew, Mary Adams, Luis Alejo

Board of Directors

Frank Lopez, President – King City
Darla Mantel, Vice President - King City
Travis Domingos, 2nd Vice President - Lockwood
Oscar Avalos, Treasurer - King City
CEO, Lauren Hamilton - King City

John Orradre, San Ardo
Christine Phillips, King City
Tim Maxwell, King City
Kevin Piearcy, Chualar

Cody Bassetti, Paso Robles
Mike McLane, King City
Margaret Noroian, Salinas
Matthew Cauley, Paso Robles
Steven Handley, Greenfield

Honorary Directors

This Salinas Valley Fair Board bestows the title of Honorary Director to those that have previously served as Directors on the Salinas Valley Fair Board and appreciate their service.

Tom Pettitt, King City
Joellen Bruce, Watsonville
Milton J. Heinsen, Lockwood
Marten Clark, Soledad
Allan Wiley, Salinas
Mike Orradre, San Ardo
Sharlene Hughes, King City
Don Carroll, Oregon

Kate Violini, Salinas
Jim Capps, San Ardo
Susan Gill, King City
Romona Bender, King City
Casey Sabin, King City
Paul Beckett, Soledad
Nate Holaday, Salinas
Scott Anthony, King City

George Young, King City
Judy Hostetter, King City
Burt Silva, King City
John Domingos III, King City
Tim Baldwin, Chualar
Walt Daoro, Gonzales
Ken Andrus, Salinas

Entry Deadline April 1st, 2024

How to Enter the Fair

- Visit www.salina.fairwire.com for the Online Entries home page, starting February 5th.
- Register as a new exhibitor. Complete the steps required for your personal information.
- Click “Add Entry” and choose a “Department”
- Within each department you will be asked to choose a “class” and information pertaining to your entry
 - You may add additional information such as a Title or Description about your item.
 - Continue to add additional entries
- When entries are complete, follow the prompts to complete your shopping cart and pay for your entries
 - Remember! You must click “Save Cart” in order for your account to be saved
 - After “saving your cart” you may come back to pay at a later date.
 - Any “carts” not paid for by April 1st 11:59 pm will not be accepted!
- If you entered a Video or Presentation division, you will need to email your video link to:
 - entryoffice@salinasvalleyfair.com
 - Video email is also due no later than April 1st.
- Print out your receipt! This is your proof that you did indeed make the entry deadline
- If you have any questions or need help, email us at Livestock@salinasvalleyfair.com or call us at 831-385-3538
- **TEACHERS!** We will be going back to our paper entry form for classroom art ONLY!
 - You may still do an online entry if you prefer
 - Paper Entry Forms are available as a PDF on our website, salinasvalleyfair.com
 - One form should include an entire class, please list each student on the form
 - Each name listed on the form is a separate entry and has a \$1 entry fee
 - Drop off or mail entry forms and entry fees (check or cash) to the front office, no later than April 1st.

Dates to Know

Entry Deadline

All Departments, Still & Livestock..... April 1st

Receiving Day

School projects, Arts & CraftsFriday, May 10th 2 - 6, & Saturday, May 11th 9 - 4

[FFA Exhibits](#)Friday, May 10th 2 - 6, & Saturday, May 11th 9 - 4

Floral Department.....**See Floral Department**

All other Still departments.....Saturday, May 11th 9 - 4

Entry Pick up day

[4H](#), [FFA](#), Floriculture.....Monday, May 20th 8 - 4

Home Arts, Arts & Crafts, Photography & Industrial Tech.....Monday, May 20th 12 - 4

Premium Pay Out- All Still Departments.....Monday, May 20th

Still Exhibit Schedule

Reminder: *Livestock exhibitors must enter at least 1 still entry in ANY still department (including Rabbits and Poultry, excluding Primary Members)*

Still Departments	Saturday May 11	Sunday May 12	Monday May 13	Tuesday May 14	Wednesday May 15	Sunday May 19	Monday May 20
		Mother's Day					
<u>Agriculture Horticulture</u>							
Veggies Received - Orradre Building					9am-1pm		
<u>Floriculture- Floral Lane</u>							
Potted Plants & Gardens Received	9am-4pm						
Fresh Flower Arrangement Received			9am-4pm				
Fresh Cut Flowers Received				9am-12pm			
Entry Pick Up							8am-4pm
<u>Home Arts</u>							
Quilts will be received <u>May 3rd</u> 10-2pm							
Receiving at Photo Lane	9am-12pm						
Entry Pick Up							12pm-4pm
<u>Arts & Crafts</u>							
School Art	Friday 3-6						
All art received in <u>Cafeteria Bldg.</u>	9am-3pm						
Entry Pick Up							12pm-4pm
<u>Photography</u>							
Receiving at <u>Photo Lane</u>	9am-4pm						
Entry & Premium Pick UP							12pm-4pm

<u>Industrial Arts & Technology</u>							
Receiving at the <u>Photo Lane</u>	9am-4pm						
Entry Pick Up							12pm-4pm
<u>FFA Exhibits</u> -Orradre Building							
FFA Receiving - <u>Friday</u>	3pm-6pm						
FFA Receiving - <u>Saturday</u>	9am -4pm						
Entry Pick Up							8am-4pm
<u>4-H Exhibits</u>							
4H Receiving – Orradre Building	9am-4pm						
Entry Pick Up							8am-4pm
<u>Judging Contests</u>							
Pre-register by 5:00 pm. Thursday							
Check-in Farm Power						10:30 am	
Check-in Floral						10:30 am	
Check-in Livestock						8:00 am	
Check-in Passport						10:00 am	
Check-in Vegetable						10:30 am	



GENERAL INFORMATION & LOCAL RULES

1. The Salinas Valley Fair opens to the public at 11:00 a.m. Thursday, May 16, 2024 and gates close at 10:00 p.m. Sunday, May 19, 2024.
2. The Fairgrounds Administrative Office is open year round. Mailing address: 625 Division Street, King City, 93930.
 - Administration Office (831)385-3538
 - Livestock (831)385-3538
 - Still Exhibits (831)385-3538
3. Responsibility rests with each exhibitor for knowing and abiding by these Local & State Rules, and the Local Rules under each department throughout the Exhibitors Guide Book. Read carefully all portions pertaining to your entries and ask the Fair Office, your 4-H or FFA leader to explain any part you do not understand.

AREA LIMITS

4. Unless otherwise specified by department, the Salinas Valley Fair competitions are open to residents and students of School Districts in the counties of Monterey, San Benito, Santa Cruz, & Northern San Luis Obispo. Junior Livestock Department, see Division Area Restrictions for participation.

AWARDS & PREMIUMS

5. Still exhibit cash premiums will be available for pickup Monday following the fair. Any premiums not picked up within 1 week will be considered a donation to the Salinas Valley Fair. Auction checks for market beef are available at the carcass contest awards program.
6. Auction and Livestock Premium checks will be available for pick up at the Livestock Office, 60 days following the fair. Project leaders will receive an email of an exact date & time.
7. Prorated Premiums: Salinas Valley Fair has budgeted monies to pay the premiums at this fair. In the event that the total premiums won by exhibitors exceed this amount, the premiums may be prorated to the exhibitors at the discretion of the Board of Directors with the approval of the Division of Fairs and Expositions. Premium ribbons, tags or cards have no value as to payment. Only the official placing on the judging sheet constitutes the final payment.
 - 4H & FFA premiums must be picked up by the Leader/Advisor
8. ***NEW* Outstanding Junior Exhibitor:** The Salinas Valley Fair Outstanding Exhibitor Award has been created to award a junior exhibitor each year who participates across all portions of the Salinas Valley Fair exhibit program. All exhibitors are automatically entered each year. One award will be given each year using the following scoring method:
 - 1 point per still exhibit entry (no limit on the number of points that can be earned)
 - 1 point per market animal entry
 - 1 point per breeding animal species entered
 - 1 point per participation in Round Robin contest
 - 1 point per judging contest entered (excluding Passport Contest)Exhibitor with the most points wins a coveted SVF buckle. In the case of a tie, still entry placing will be used to break a tie.

ENTRIES

9. **All entries are due online April 1st. No late entries will be accepted.**
*Online entries open February 1, www.salina.fairwire.com
10. All 4-H & FFA Livestock Division entries must be approved by project leaders or advisors.
11. **Livestock Exhibitors are required to enter at least 1 Still (Non-Livestock) entry.**
* **Entries must be entered online by April 1st and can be in any department.**

REMOVAL OF EXHIBITS

12. Please be advised of the times specified in the rules at the beginning of each Department. The management reserves the right

to reject any exhibit offered if it is objectionable in any way, requires an excessive amount of space, or if the capacity of the Department has been reached. Exhibits not picked up or removed at time designated under individual department headings will be considered a donation to the Salinas Valley Fair.

TRAFFIC

13. No vehicles will be allowed to drive on-grounds between Thursday - Sunday during the run of the Fair. Parking during the fair will be determined by Fair Management. Vehicles and trailers will be towed away if parked in undesignated areas of the grounds.
14. All Fair gates will be closed to admittance at 10 p.m. each night. Pedestrians may exit through west and/or front rotary gates. Curfew in the livestock area will be 9 p.m. at which time there will be no admittance by exhibitors, parents, or visitors into this area. This will be strictly enforced.

RESPONSIBILITY

15. Each exhibitor will be solely responsible for any consequential or other loss, injury or damage done to or occasioned by, or arising from any animal or article exhibited by him/her, and shall indemnify the Salinas Valley Fair against all legal proceedings in regard thereto. The fair will take reasonable precautions to ensure the safety of exhibits and property of description entered for competition or display or any other purpose while anywhere on the grounds that shall be subject to the control of the Salinas Valley Fair, but the owners themselves must take the risk of exhibiting them. In no case will the fair be responsible in any way for any loss, damage, or injury of any character to any property, article or person, while the same is on the fairgrounds or at any other time or place, nor be liable for or make any payment for damage, loss or injury. Presentation of entry form shall be deemed acceptance of this rule.
16. Violation of rules and/or misconduct by any exhibitor, adjudicated by the "On the Spot committee" may result in forfeiture of premium money and/or nullification of proceeds from sale through the Junior Livestock Auction and return of animals to that particular exhibitor. Market animals will be terminated at resale market price as posted on auction day.
17. Buildings will be closed during judging.
18. Best of show or Judge's Choice will be selected from first placings only.
19. Only fully trained service dogs will be allowed on the grounds.
20. NO WHEELIES, NO BICYCLES, NO SKATEBOARDS, NO SCOOTERS OR RECREATIONAL VEHICLES OF ANY KIND.

STATE RULES

21. State Rules for California Fairs are incorporated by this reference and will be enforced. State Rules are available on the California Department of Food & Agriculture website, the Salinas Valley Fair Website and a copy is on file at the Salinas Valley Fair Livestock Office. www.cdfa.ca.gov/fairs_&_expositions



AGRICULTURE **HORTICULTURE**

(Open to Commercial Exhibitors)

Matt Cauley, Director

JOSH POTTS, Building Supervisor

ENTRY OFFICE 385-3538

livestock@salinasvalleyfair.com

All Ag Hort entries Received

Receiving.....9am- 1pm, Wed, May 17

Judging..... Wed, May 17

***Entries may be made online or emailed to the Entry office at
livestock@salinasvalleyfair.com***

RULES

1. All agriculture and horticulture products entered by individuals or commercial exhibitors must have been produced (grown) by exhibitors in Monterey County. A commercial exhibitor shall be defined as one who engages in growing commodities as a business activity for monetary profit. A non-commercial exhibitor shall be defined as one who engages in growing products for a pastime rather than a business.
2. Entry must be properly labeled
3. The quality desired in Agricultural and Horticultural Product exhibits are the quality that brings the best financial return in the commercial market, and such exhibits must be at least equal in maturity as the stage of ripeness required by Section 42513 of California Agricultural Code in order to be considered for premium awards. Exhibits stressing features which detract from the commercial value should be avoided. Section 42513. "Mature" means having reached that stage of ripeness which will ensure the completion of the ripening process to a degree which will insure palatability, after the removal of the product from the tree, plant or vine. Section 42515. "Over ripe" means having an advanced stage or maturity which causes the product to be undesirable for human consumption in a fresh state.
4. Only Non-Perishable entries will be returned to exhibitor
5. Individual and commercial exhibitors are required to keep their perishable displays of fruit and vegetables in market condition for the duration of the fair.

NO ENTRY FEE

PREMIUMS

Judged American

RIBBONS ONLY

Best of Show Ribbons

Division 1/2 - Dry Beans

Division 6/7 - Veg Plate Display

Division 8/9 - Lug, Pack or Crate

Division 8/9 Categories:

Broccoli, Cauliflower, Leaf Lettuce,

Head Lettuce, Mushrooms, All other

Division 10/11 - Food Service

Division 10/11 Categories:

Food Service, Salad Packs,

Organic Salad Product

Division 13/14 - Strawberries

Division 15-16 - Berries

Outstanding Exhibitor Plaque

Judges Discretion

DIVISION 1 - DRY BEANS

DIVISION 2 - ORGANIC DRY BEANS

1 pint in open container

CLASS

1. Garbanzo
2. Lima- Large
3. Lima- Small
4. Pink
5. Pinto
6. White, small
7. All other beans, specify

VEGETABLE PLATE DISPLAY

Root, Bulb & Tuber vegetables

Leafy & Stem vegetables

NO CELLO PACKS

NON COMMERCIAL

DIVISION 6 - PLATE DISPLAY

DIVISION 7 - ORGANIC PLATE DISPLAY

CLASS

1. Anise - 2 bulbs
2. Artichokes - 3 heads
3. Asparagus - 1 bunch
4. Broccoli - 3 stalks
5. Cabbage, Bok Choy - 2 heads
6. Cabbage, Green - 2 heads
7. Cabbage, Napa - 2 heads
8. Cabbage, Red - 2 heads

9. Cabbage, Savoy - 2 heads
10. Cactus Pear - 3 pears
11. Carrots - 2 bunches
12. Cauliflower - 2 heads
13. Cauliflower, other - 2 heads
14. Chard, Red - 1 bunch, 3 stalks per bunch
15. Chard, Swiss - 1 bunch, 3 stalks per bunch
16. Cilantro - 3 bunches
17. Kale - 2 heads
18. Kale, Flowering - 2 heads
19. Kohlrabi - 1 bunch
20. Leeks - 3 stalks
21. Lettuce, Butter - 2 heads
22. Lettuce, Red butter - 2 heads
23. Lettuce, Endive - 2 heads
24. Lettuce, Escarole - 2 heads
25. Lettuce, Green leaf - 2 heads
26. Lettuce, Red leaf - 2 heads
27. Lettuce, Head - 2 heads
28. Lettuce, Romaine - 2 heads
29. Lettuce, Romaine Hearts - 2 heads
30. Mustard Greens - 2 bunches
31. Onions, Green - 3 bunches
32. Parsley, Curly - 2 bunches
33. Parsley, Italian - 2 bunches
34. Radicchio - 2 heads (Chicory)
35. Radishes - 1 bunch
36. Rappini - 3 bunches
37. Spinach - 2 bunches
38. Organic - head lettuce - 2 heads
39. Organic - leaf lettuce - 2 heads
40. Organic - romaine - 2 heads
41. Organic - cauliflower - 2 heads
42. Organic - broccoli - 2 heads
43. Any other, specify

COMMERCIAL LUG, PACK, CRATE OR SACK DISPLAY

DIVISION 8 - LUG, PACK or CRATE

DIVISION 9- ORGANIC PACK OR CRATE

(OPEN & WRAPPED package, accepted for commercial display container)

CLASS

1. Anise
2. Artichokes
3. Artichokes, cello
4. Artichokes, baby cello

5. Asparagus
6. Beets

BROCCOLI

7. Broccoli, 14's
8. Broccoli, 18's
9. Broccoli, Export
10. Broccoli, Crowns
11. Broccoli, Organic
12. Broccolini
13. Broccoli Rabe
14. Brussel Sprouts
15. Cabbage, Bok Choy
16. Cabbage, Napa
17. Cabbage, Green
18. Cabbage, Red
19. Cabbage, Savoy
20. Cactus Pear

CAULIFLOWER

25. Cauliflower, cello
26. Cauliflower, naked
27. Cauliflower, organic
28. Cauliflower, other
29. Celery
30. Celery Hearts
31. Chard, Red
32. Chard, Swiss
33. Chives
34. Collards, Green
35. Cilantro
36. Kale
37. Kale, Flowering
38. Kohlrabi
39. Leeks

LEAF LETTUCE

44. Multi Leaf - Display - Bag, Naked
45. Sleeved on a Plate- Red leaf, Green leaf or Romaine
46. Lettuce, Butter or Boston
47. Lettuce, Red Butter
48. Lettuce, Endive - Liner
49. Lettuce, Endive - Sleeve
50. Lettuce, Escarole
51. Lettuce, Escarole - Sleeve
52. Lettuce, Escarole - Liner
53. Lettuce, Green Leaf
54. Lettuce, Green Leaf - Naked
55. Lettuce, Green Leaf - Sleeve
56. Lettuce, Green Leaf - Organic
57. Lettuce, Green Leaf - Liner

58. Lettuce, Red Leaf
59. Lettuce, Red Leaf - Naked
60. Lettuce, Red Leaf - Sleeve
61. Lettuce, Red Leaf - Organic
62. Lettuce, Red Leaf - Liner
63. Lettuce, Romaine - Naked
64. Lettuce, Romaine - Sleeve
65. Lettuce, Romaine - Liner
66. Lettuce, Romaine - heart 12x3
67. Lettuce, Romaine - hearts - Cello (4 heads or more)
68. Lettuce, Romaine - hearts - Cello (3 heads or less)
69. Lettuce, Romaine - hearts - 48 loose
70. Lettuce, Romaine - hearts, Organic
71. Lettuce, Romaine - other
72. Lettuce, Romaine - organic
73. Lettuce, Romaine - red
74. Lettuce, Romaine - red - Naked
75. Lettuce, Romaine - red - organic
76. Lettuce, Romaine - red - Liner 12ct
77. Lettuce, Romaine - red - Liner 24ct

HEAD LETTUCE

80. Lettuce, Head - 24 (naked)
81. Lettuce, Head - 24 cello
82. Lettuce, Head - 24 (liner)
83. Lettuce, Head - 24 organic (naked)
84. Lettuce, Head - 24 Organic (cello)
85. Lettuce, Head - 12 count
86. Lettuce, Head - 3 pack bag
87. Lettuce, Head - 6 pack bag
88. Lettuce, Head - palletized
89. Lettuce, Head - Mini
90. Lettuce, Head - whole cored

MUSHROOMS

95. Mushrooms, Oyster
96. Mushrooms, Oyster - cello
97. Mushrooms, Shiitake
98. Mushrooms, Shiitake - cello
99. Mushrooms, Standard
100. Mushrooms, Standard - cello
101. Mushrooms, Any other

OTHER

105. Mustard Greens
106. Onions, Green
107. Parsley, Curly
108. Parsley, Italian
109. Peas, Specify
110. Radicchio
111. Radishes
112. Rapini

113. Spinach - Bunch - loose pack
114. Spinach - Baby
115. Squash
116. Any other, specify

Best of Show awarded in the following classes

Broccoli
Cauliflower
Leaf lettuce
Lettuce, Romaine
Head lettuce - Naked
Head lettuce - Cello
Mushrooms

FOOD SERVICE & SALAD PACK

NO ENTRY FEE

PREMIUMS RIBBONS ONLY

DIVISION 10 - FOOD SERVICE & SALAD PACK

DIVISION 11 - FOOD SERVICE & SALAD PACK- ORGANIC

Accepted commercial display container

FOOD SERVICE

CLASS

1. Alfalfa Sprouts
2. Artichokes, plastic pack
3. Artichokes, baby, plastic pack
4. Asparagus, plastic pack
5. Broccoli Florets - Retail 1#
6. Broccoli Florets - Cello or Mesh 2# or more
7. Broccoli Florets - Loose
8. Broccoli Slaw
9. Broccoli Spears
10. Cabbage, shredded, Green
11. Cabbage, shredded, Angel Hair
12. Cabbage, shredded, Red
13. Cabbage, shredded with mix pack
14. Cabbage, Cole slaw - 3#
15. Cabbage, Cole slaw - 5#
16. Carrots sticks, cello
17. Carrots & Celery sticks
18. Carrots, shredded
19. Carrots, whole peeled, cello
20. Cauliflower florets - specify weight
21. Onions, diced - cello

22. Onions, sliced - cello
23. Onions, green - cello
24. Lettuce, chopped - specify weight
25. Lettuce, shredded - specify weight
26. Whole leaf
27. Any other food service, specify

SALAD PACKS

28. Leaf lettuce mix salad - specify weight
29. Salad mix iceberg - specify weight
30. Spinach salad - specify
31. Vegetable medley - specify
32. Cabbage, ColeSlaw salad - specify
33. Specialty salad pack - specify

ORGANIC SALAD PRODUCTS

34. Organic spring mix, salad - specify
35. Organic salad/garden mix - specify
36. Organic romaine mix, salad - specify
37. Organic spinach salad - specify
38. Organic whole leaf
39. Any other organic salad product - specify

STRAWBERRIES

DIVISION 13- STRAWBERRIES CONVENTIONAL

DIVISION 14- STRAWBERRIES ORGANIC CLASS

1. Strawberry Basket
2. Strawberry Clamshell
3. Any other strawberries, specify

BERRIES

DIVISION 15 - BERRIES CONVENTIONAL

DIVISION 16 - BERRIES ORGANIC CLASS

1. Raspberries Basket
2. Raspberries Flat
3. Blackberries Basket
4. Blackberries Flat
5. Any other berries, specify



FLORICULTURE **DEPARTMENT**

FRANK LOPEZ – Director

KIM SCHMIDT - Supervisor

KRYSTA EDDINGTON - Supervisor

Entries accepted online only until 11:59 pm April 1st

All Potted Plants, Planters & Garden Construction

Receiving & Planting.....9am- 4pm, Sat, May 11

All Fresh Flower Arrangements Received

Receiving.....9am- 4pm, Mon, May 13

All Fresh-Cut Flower Entries Received

Walk-ins for Fresh Cut Flowers accepted

.....9am- 12pm, Tues, May 14

Exhibits released.....8am - 4pm, Mon, May 20

SVF not liable for items left after 4:00 pm

RULES

1. Adult divisions include Garden clubs and Florists, 18yrs and older.
2. Exhibits must be adequately and correctly labeled.
3. Cut flowers and potted plants in the Floriculture Department must be grown by the exhibitor. Flowers used in arrangements may be home grown or purchased.
4. Containers for cut flower specimens will be furnished by the Fair. Exhibitors must furnish containers for their arrangements. (The fair will not be responsible for any lost or stolen articles.)
5. Exhibits entered in the wrong class or division will be reclassified by the supervisor or judge.
6. All exhibits must be maintained and kept in good condition for the duration of the Fair. Exhibits that become unsightly may be removed without the permission of the exhibitor.

7. Cut flowers may be exchanged for fresh ones when the building opens each day.
8. Garden Displays: Space is limited, if you have to cancel your entry, please call the **Entry Office 831-385-3538**
9. Gardens must be completed to obtain credentials.
10. Exhibitors may water their plants before the fair opens each day.
11. Open Floriculture Department American System Judging.

ADULT & JR. **WINE BARREL** **GARDENS**

Be creative and plant a wine barrel. Salinas Valley Fair will supply a half wine barrel and soil. Exhibitors will need to provide different varieties of flowers and plants. Wine Barrels will be available for purchase after the fair for \$50. Proceeds from the sale of barrels will assist with competition expenses. If you choose not to buy your barrel the Salinas Valley Fair will use the barrels on grounds for display throughout the year.

Entry Fee

\$5.00 per entry

Youth Premiums

Ribbons Only

Adult Premiums

1st 2nd 3rd

\$10.00 \$8.00 ribbon

DIVISION 20 - WINE BARREL GARDEN CLASS

1. Adult -Individual
2. Adult Group project- No more than 3 people- Provide names
3. Youth - Individual
4. Youth Group project- No more than 2 people- Provide names

ADULT **DISPLAY GARDENS**

Adults 18 years and older

Entry Fee

\$10.00 per Garden

Space is limited, entries are assigned upon receipt of entry blank, on a first come, first serve basis. If you have to cancel your entry, please call the entry office 831-385-3538 as soon as possible.

Rules:

1. Display plan required, plant I.D. & design
2. Display Garden entries may purchase up to two \$15 working credentials. The credential allows you to come daily to water or check on your garden and are distributed when gardens are completed.
3. Garden size approximately 7' deep x 14' wide
4. Entrants will be responsible for daily maintenance
5. Pools & fountains must be leak proof.
6. Proper identification of all plants
7. All plots watered before 10 am, duration of the Fair.
8. American System of Judging.

Entry Fee

\$10.00 per Garden

Ribbons Awarded

Best of Show Adult Amateur Garden

Best of Show 4-H Garden

Best of Show FFA Garden

Best of Show Open Jr. Garden

Cash Prizes

LANDSCAPES JUDGED ON

Design & Presentation 45%

Technique of Construction 15%

Condition of Plant Material 15%

Interpretation of Theme and Conformity to Schedule 15%

Landscape Plan 10%

DIVISION 22 - ADULT GARDEN CLASS

1. Fair Theme
2. Designer's Choice- Provide a title

ADULT **CUT FLOWERS**

Adults 18 years and older

Entry Fee

\$1.00 per entry

Premiums

American Style Judging

1st	2nd	3rd
\$2.00	\$1.00	Ribbon

DIVISION 23 - ROSES

Note: All roses must be de-budded, except for sprays. Should have two (2) or three (3) sets of leaflets. Bud should be open.

HYBRID TEA

1 Bloom on 1 Stem

CLASS

1. Hybrid Tea - orange/orange red
2. Hybrid Tea - orange blend
3. Hybrid Tea - pink
4. Hybrid Tea - pink blend
5. Hybrid Tea - red
6. Hybrid Tea - red blend
7. Hybrid Tea - yellow
8. Hybrid Tea - yellow blend
9. Hybrid Tea - white/near white
10. Hybrid Tea - white blend
11. Hybrid Tea - mauve
12. Hybrid Tea - multi color
13. Any other not listed above

FLORIBUNDAS

2 or More Blooms on 1 Stem

CLASS

14. Floribunda spray - 1 stem - orange/orange blend
15. Floribunda spray - 1 stem - orange red
16. Floribunda spray - 1 stem - pink/pink blend
17. Floribunda spray - 1 stem - red/red blend
18. Floribunda spray - 1 stem - yellow/yellow blend
19. Floribunda spray - 1 stem - white/near white
20. Floribunda spray - Any color
21. Single petal
22. Any other floribunda, specify

GRANDIFLORAS

1 Bloom on 1 Stem

CLASS

23. Grandiflora - 1 stem - orange/orange blend
24. Grandiflora - 1 stem - orange red
25. Grandiflora - 1 stem - pink/pink blend
26. Grandiflora - 1 stem - red/red blend
27. Grandiflora - 1 stem - yellow/yellow blend
28. Grandiflora - 1 stem - white/near white
29. Grandiflora - Any color
30. Grandiflora Spray - 1 Cluster of Blooms on a Stem

MINIATURE ROSES

Single Stem or Spray

CLASS

31. 1 Bloom per Stem
32. Spray or Cluster of Blooms

MISCELLANEOUS ROSES

CLASS

33. Single Petal - any color - any type
34. Old Garden, Old Fashioned, Old English
35. Any Other Rose not listed above

DIVISION 24 - VINES

CLASS

1. Trumpet
2. Jasmine
3. Honeysuckle
4. Bougainvillea
5. Wisteria
6. Clematis
7. Passion Flower
8. Potato Vine
9. Any other bush or rare flower - must be named
10. Any vine - must be named

DIVISION 25 - ANNUALS, PERENNIALS & FLOWERING PLANTS

Note: Blooms cannot have buds. Stems are allowed buds.
Three (3) stems unless otherwise specified.

CLASS

1. Agapanthus - regular or miniature - 1 stem

2. Alstroemeria (Peruvian Lily)
3. Allium
4. Alyssum
5. Amaryllis - 1 stem
6. Aster - single or double
7. Astilbe
8. Baby's Breath or Gypsophila
9. Bird of Paradise - 1 stem & a leaf
10. Bottle Brush, 1 stem
11. Calendula
12. Calla - 1 stem
13. Camellia - 1 stem
14. Canna - 2 stems
15. Carnations - any color
16. Columbine
17. Chrysanthemum
18. Cornflower
19. Coral Bells
20. Coreopsis
21. Daffodil, any color
22. Dahlias
23. Daisy - any variety or color
24. Daylilies
25. Delphinium
26. Dianthus
27. Freesia
28. Forget-me-nots - 1 stem
29. Foxglove, 1 stem
30. Fuchsia - single - 1 stem
31. Fuchsia - double - 1 stem
32. Geranium - ivy - 1 stem (must have leaves)
33. Geranium - garden - 1 stem (flower with leaves)
34. Gladiola
35. Gerbera Daisy
36. Heather
37. Hollyhock - single or double - 1 stem
38. Hosta
39. Hydrangea - any color
40. Impatiens
41. Iris - bearded - any color - 1 stem
42. Iris - Dutch - any color - 1 stem
43. Jasmine - 1 stem
44. Larkspur
45. Lantana
46. Lavender
47. Lavandula
48. Lilac
49. Lily - any color - 1 stem
50. Lisianthus
51. Marigold - any color

52. Money plant - peeled or unpeeled
53. Nasturtium
54. Pansy - 5 stems
55. Pelargonium - 1 stem
56. Peony - 1 stem
57. Petunia - single or double - any color
58. Phlox
59. Poppies - Oriental
60. Poppies - Iceland
61. Poppies - California
62. Poppies - any other - must be named
63. Primrose
64. Ranunculus - any color
65. Sedum
66. Sage
67. Salvia
68. Scabiosa
69. Sunflower
70. Shrimp Plant
71. Snapdragons - any color
72. Snowballs - 1 stem
73. Statice - any color
74. Sweet Peas
75. Sweet Williams
76. Thistle
77. Veronica
78. Viburnum
79. Viola - stems with blooms
80. Yarrow
81. Any other annual or perennial - must be named

DIVISION 26 - ADULT ARRANGEMENTS

1 dozen or More Stems, No Greenery or Filler From
Exhibitors Garden

CLASS

1. Any 1 type of flower
2. Mixed types of flowers

ADULT **POTTED PLANTS**

Adults 18 years & older

Entry Fee
\$2.00 per entry

Premiums		
1st	2nd	3rd
\$3.00	\$2.00	Ribbon

DIVISION 27 - CACTI & SUCCULENTS **CLASS**

1. Cactus Dish Garden, 3 Varieties or more
2. Any other variety cacti not listed - specify
3. Succulent Dish Garden, 2 or more varieties
4. Any other variety succulent not listed - specify

DIVISION 28- CONTAINER GARDEN

CLASS- *3 or more plants*

1. Terrarium or bottle garden or any glass container
2. Any plants in a crate, wooden box or metal container
3. Wall or art hanging container with live plants
4. Patio Planter
5. Planted kids wagon
6. Any other

DIVISION 29 - NON-BLOOMING PLANTS

CLASS

1. Ferns
2. Ivy
3. Any other foliage plant - specify

DIVISION 30 - POTTED BLOOMING ORCHIDS

CLASS

1. Any Orchid in bloom - specify

DIVISION 31 - BONSAI

CLASS

1. Any Bonsai - specify

DIVISION 32 - BLOOMING PLANT

CLASS

1. Any Blooming Plant - specify

ADULT **ARRANGEMENTS**

Adults 18 Years and older

Entry Fee
\$2.00 per entry
No Food, Fresh Fruit or Candy

Premiums		
1st	2nd	3rd
\$3.00	\$2.00	Ribbon

DIVISION 33 - FRESH, DRY OR SILK **ARRANGEMENTS OR BOUQUETS**

CLASS

1. Fair Theme
2. Arrangements made in or on a wood or metal container (box, branch, containers etc.)
3. Any other, specify

4H, FFA & OPEN JR. **FLORICULTURE &** **HORTICULTURE**

FRANK LOPEZ – Director
KIM SCHMIDT - Supervisor

Entries accepted online only until 11:59 pm April 1st
All Potted Plants, Planters & Garden Construction
Receiving & Planting.....9am- 4pm, Sat, May 11
All Fresh Flower Arrangements Received
Receiving.....9am- 4pm, Mon, May 13
All Fresh Cut Flower Entries Received
Receiving.....9am- 12pm, Tues, May 14
Exhibits released.....8am - 4pm, Mon, May 20
SVF will not be held liable for items left after 4pm

RULES:

1. Exhibitors under 18 years old, or enrolled in school
2. Exhibitor to include age, grade, school and instructors' signature on entry blank.
3. Bouquets & Arrangements, contain at least 7 stems, can be placed in containers with oasis or clear water.

4. Arrangement defined as flowers & green placed in oasis.

Horticulture is defined as a plant that you have grown yourself and repotted within the last 12 months

4H, FFA & OPEN JR.
DISPLAY GARDENS

Space is limited, plots are assigned on a first come, first serve basis. If you have to cancel your entry, please call the entry office 831-385-3538 as soon as possible.

Rules:

1. Display plan required, plant I.D. & design
2. Display Garden entries may purchase up to two \$15 working credentials. The credential allows you to come daily to water or check on your garden and are distributed when gardens are completed.
3. Garden size approximately 7' long x 14' wide
4. Exhibitors will be responsible for daily maintenance & watering
5. Pools & fountains must be leak proof.
6. Proper identification of all plants
7. All plots watered before 10 am, duration of the Fair.
8. Adults may carry heavy items and give advice but each garden must be assembled by juniors.

Entry Fee
\$10.00 per Garden

Awards
Best of Show 4-H Garden
Best of Show FFA Garden
Best of Show Open Jr. Garden

Premiums
American Style Judging

1st	2nd	3rd
\$40.00	\$20.00	Ribbon

GARDENS JUDGED ON
Design & Presentation 45%
Technique of Construction 15%
Condition of Plant Material 15%
Interpretation of Theme and Conformity to Schedule 15%
Landscape Plan 10%

DIVISION 35 - 4-H GARDEN
DIVISION 36 - FFA GARDEN
CLASS

1. Fair Theme
2. Designer's Choice- Provide a title

4H, FFA & OPEN JR.
POTTED PLANTS

RULES

1. Entries must be repotted and grown by the exhibitor.

Ribbons Awarded

Best of Show Jr. Potted Plants

Entry Fee

\$2.00 per entry

No Premiums- Ribbons only

DIVISION 38 - Pre - 3rd Grade Potted Plants
DIVISION 39 - 4th - 8th Grade Potted Plants
DIVISION 40 - 9th-12th Grade Potted Plants
DIVISION 41 - 4H Potted Plants
DIVISION 42 - FFA Potted Plants

CLASS

1. Plants in Metal or Wood container
2. Terrarium- 3 or more plants in any glass container
3. Fair Theme
4. Bright Lights
5. Country Roads
6. Land That I Love
7. Propagated Vegetables- Pony Pack, grown by exhibitor
8. Propagated Flowers- Pony Pack, grown by exhibitor
9. Any other

4H, FFA & OPEN JR.
FAIRY GARDENS

DIVISION 43- Pre - 3rd Grade Fairy Garden
DIVISION 44 - 4th - 8th Grade Fairy Garden
DIVISION 45 - 9th-12th Grade Fairy Garden
DIVISION 46 - 4H Fairy Garden
DIVISION 47 - FFA Fairy Garden

CLASS

1. Fairies on a picnic
2. Fairies in the woods
3. Tiny Creatures
4. Flower Pot- Ceramic or Terracotta

5. Tea Cup
6. Terrarium
7. Fairy lights
8. Any other Fairy Garden, Specify

4H, FFA & OPEN JR.

SUCCULENTS

DIVISION 50 - Preschool- 3rd Grade Succulents

DIVISION 51 - 4th - 8th Grade Succulents

DIVISION 52 - 9th-12th Grade Succulents

DIVISION 53 - 4H Succulents

DIVISION 54 - FFA Succulents

CLASS

1. Fun in the sun
2. Canning jar or glass container
3. Wall art or hanging container
4. Table-scape, succulents in a metal container
5. Land That I Love
6. Bright Lights
7. Country Roads
8. Vintage Cottage
9. Succulent Basket
10. Fair Theme
11. Any other

4H & FFA

FLORAL & HORTICULTURE

VIDEO

DEMONSTRATIONS

RULES:

1. Each club or chapter must submit 1 USB with all demonstrations for that club.
- Videos will be displayed in the Floral Building
2. USB are due April 1st.
2. Presentations may ONLY be 3-5 minutes long

Entry Fee

\$2. 00 Per Entry

No Premiums- Ribbons only

VIDEOS JUDGED ON

Time 20%

Speaking Ability 20%

Knowledge on Topic 20%
Keeping it Interesting 20%
Clean & Clear Workspace/Background 20%

DIVISION 56 4H FLORAL DEMO VIDEO
DIVISION 57 FFA FLORAL DEMO VIDEO
CLASS

1. Video demonstration on placement of flowers
2. Video on Floral Room Safety

DIVISION 58 4 H HORTICULTURE DEMO

DIVISION 59 FFA HORTICULTURE DEMO

CLASS

1. Video demonstration on placement of plants
2. Video on safety equipment & tools

4H & FFA

LANDSCAPE PLANS

RULES:

1. Show a complete landscape design

DIVISION 60 4H LANDSCAPE PLANS

DIVISION 61 FFA LANDSCAPE PLANS

CLASS

1. Hand Drawn Design
2. Computer Generated Design

4H, FFA & OPEN JR.

FLORICULTURE

Entry Fee

\$2.00 per entry

No Premiums - Ribbons only

4H, FFA & OPEN JR.

ARRANGEMENTS

Arrangement defined as flowers & greens placed in an oasis
or container

DIVISION 66 - 4H Arrangements

DIVISION 67 - FFA Arrangements

DIVISION 68 - 4th - 8th Grade Arrangements

DIVISION 69 - 9th-12th Grade Arrangements

CLASS

1. Land or Country That I Love
2. Wreath with dry or silk flowers
3. Beautiful Paradise
4. Country Roads
5. Something Beautiful
6. Fair Theme Bouquet
7. Disneyland (A character or movie theme)
8. Fiesta or Dia De Los Muertos
9. Bright Lights
10. School or Team Pride
11. Everlasting Silk or Dry arrangement
12. Vintage Cottage
13. My favorite Color
14. Dark & Mysterious
15. Any other

4H & FFA

LATE ENTRY CUT FLOWERS

After April 1st there is a \$20.00 penalty fee, plus regular \$2.00 entry fee, for livestock exhibitors that fail to bring a mandatory still exhibit, in this division ONLY

Receiving- Tuesday May 14, 9 am - noon only

DIVISION 70- CUT FLOWERS- LATE ENTRY

CLASS

1. Any other

4H & FFA

WEDDING FLOWERS

This division is for exhibitors in a 4H or FFA floral project

Entry Fee

\$2.00 Per Entry

No Premiums - Ribbons only

DIVISION 80 - 4H Fresh Wedding Flowers

DIVISION 81 - FFA Fresh Wedding Flowers

CLASS

1. Brides Bouquet
2. Bridesmaid Bouquet

3. Wristlet
4. Boutonniere
5. Floral Halo
6. Wedding Centerpiece or Decoration, Specify
7. Any Other Wedding Flowers

4H & FFA

ADVANCED FLORAL PROJECTS

Entry Fee

\$5.00 Per Entry

Premiums

American Style Judging

1st	2nd	3rd
\$25.00	\$15.00	Ribbon

DIVISION 83- 4H Wedding Advanced Project

DIVISION 84- FFA Wedding Advanced Project

CLASS

1. Wedding or Quinceanera Planner Scrapbook - A complete wedding business plan. Focus on floral designs and pricing, wholesale and retail mark-up with profit. Be sure to include a complete budget, colors, photos, itinerary etc. Show that you can plan the event. Have fun and be creative.

-This is a Binder Only project, not to be included with the table setting in class 2.

PLANNER JUDGED ON

Total Overview 30%

Floral Budget 30%

All Other Major Detail Plans 30%

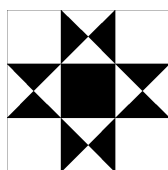
Neatness & Organization 10%

2. Wedding or Quinceanera Reception - ***This project is setting an actual table.*** Complete with: Bride & Bridesmaid Bouquet, boutonniere & wristlet, table centerpiece, table cloth, cloth napkin & place setting including glassware, NO KNIVES. Optional but encouraged- unlit candles, favors, menu or any accessories that add to your special day.
- Round tables will be provided for your display. No Binders included in the class.

RECEPTION JUDGED ON

Table Overview 20%

Bridal Bouquet 20%
 Centerpiece 20%
 Bridesmaid Bouquet 10%
 Wristlet 10%
 Boutonniere 10%
 Accessories 10%



HOME ARTS

MARGARET NOROIAN - Director
NOEL NOROIAN, Supervisor

Entries accepted online only until 11:59 pm April 1st

Entries received at Photo Lane

Quilts received at Front Office

Quilts Received.....10 am - 2pm, Fri, May 3
Entries Received.....9 am - 12 pm, Sat, May 11
Exhibits released.....12 pm - 4 pm, Mon, May 20

RULES

1. All articles must be handiwork or home-prepared by the exhibitor and finished within the last 12 months.
2. Entries that require packaging and labeling, i.e., Preserved Foods, only standard containers will be accepted. Quilted jars will be permitted as long as they are standard canning and preserving jars.
3. Items which have been shown at any previous Salinas Valley Fair are not eligible.

DELIVERY OF ARTICLES

4. Claim checks will be given at receiving. Keep your claim check for picking up your items on Monday.
5. There will be attendants in charge of the building during the Fair hours; the buildings will be locked at night. Articles are entered at the owner's own risk.

DISPLAY REQUIREMENTS

6. No special handling requirements
7. Articles which are objectionable, stained, soiled, or broken will not be accepted for judging. Any articles showing signs of wear or use may not be entered.
8. If more than one unattached piece is included in one exhibit, the exhibitor must label each as to "1 of 2," "1 of 4," etc., in a set.
9. Exhibitor's name must be concealed until after judging.
10. Management reserves the right to dispose of foods that are no longer presentable due to spoilage.

RETURN OF ARTICLES

11. Please bring your "CLAIM CHECKS". No item will be released without your claim check.
12. Exhibits not picked up or removed at time designated under individual department headings will be considered a donation to the Salinas Valley Fair.

BAKING & CONFECTIONS

RULES

1. All entries must be made from scratch
2. Sweepstakes will be awarded according to State Rules. At least 3 exhibitors with at least a combined total of 30 points & an exhibitor must have a minimum of 10 points, adult divisions only.
3. Read division description for judging preparation and delivery requirements of baked goods and confections.

Entry fee

Adult Divisions - \$2.00 per entry.

Youth Divisions - \$1.00 per entry.

Limit 2 Entries per class

Premiums

Adult Divisions

1st	2nd	3rd
\$4.00	\$3.00	Ribbon

Youth Divisions

Ribbons Only

Home Arts Awards

Best of Show Ribbon- Each Category

Outstanding Exhibitor- Cash Prize

Sweepstakes- Cash Prize 1st Place

- Adult Baking & Confections
- Adult Preserved Foods
- Adult Quilting

BREADS & BISCUITS

DIVISION 100 - Preschool- 2nd GRADE

DIVISION 101 - 3rd - 5th GRADE

DIVISION 102 - 6th - 8th GRADE

DIVISION 103 - 9th - 12th GRADE

DIVISION 105 - ADULT 18 yrs. & OLDER

BREADS

1 Loaf or 6 Rolls

CLASS

1. Any yeast roll or loaf, specify
2. Any non-yeast roll, specify
3. Whole grain
4. Buttermilk
5. Any other

BISCUITS

(6) Pieces

CLASS

6. Any yeast biscuit, specify
7. Any non-yeast biscuit, specify
8. Bran muffins
9. Cornbread
10. Muffins, fancy
11. Muffins, plain
12. Scones
13. Any other

CAKES

DIVISION 106 - Preschool - 2nd Grade

DIVISION 107 - 3rd - 5th GRADE

DIVISION 108 - 6th - 8th GRADE

DIVISION 109 - 9th - 12th GRADE

DIVISION 111 - ADULT 18 yrs. & OLDER

WHOLE FROSTED OR UNFROSTED

CLASS

1. Chocolate
2. Fruit- Specify
3. Spice
4. White
5. Any other

WHOLE LOAF OR POUND CAKE

CLASS

6. Bundt
7. Pound
8. Zucchini

9. Cheese
10. Spice
11. Angel Food
12. Gluten Free
13. Carrot
14. Any other

CUPCAKES

(6) Pieces

CLASS

15. Frosted
16. Plain
17. Decorated

WHOLE DECORATED CAKES

Cake may be edible or made from styrofoam or cardboard to achieve the shape of a baked cake, then decorated using frosting.

CLASS

18. Fair theme
19. Any occasion or season, specify
20. Group project, Names submitted on a 3"x 5" card

DRESS UP YOUR PREPARED CAKE MIX

You may use a prepared mix for this division. Cakes are judged on originality of dressing up a box mix and flavor.

CLASS

21. Sheet
22. Bundt
23. Pan

FAMILY CONNECTION

Items must be prepared by at least one adult family member with any junior family member i.e., Grandma/Grandson, Mother/Daughter, etc. Please include both names when entering this division.

DIVISION 112 - Family Connection

CLASS

1. Cookies ½ dozen
2. Cupcakes ½ dozen
3. Confection 6 pieces
4. Any Cake
5. Any Pie
6. Any other, specify

COOKIES

(6) Pieces

DIVISION 113 - P- 2nd GRADE

DIVISION 114 - 3rd - 5th GRADE

DIVISION 115 - 6th - 8th GRADE

DIVISION 116 - 9th - 12th GRADE

DIVISION 117 - ADULT 18 yrs. & OLDER

BAR COOKIES

Six pieces

CLASS

1. Bar cookies, fruit
2. Brownies
3. Any other Bar cookie, specify

DROP COOKIES

Six pieces

CLASS

4. Chocolate chip, all kinds
5. Oatmeal
6. Peanut Butter
7. Any other drop cookie, (specify on entry form, including gluten free)

ICEBOX, MOLDED OR ROLLED COOKIES

Six pieces

CLASS

8. Chocolate
9. Filled
10. Ginger
11. Pinwheel
12. Sugar
13. Biscotti
14. Any other Icebox, Molded or Rolled cookie - (specify)

COOKIE MIX IN A JAR

Judged on taste & presentation of your mix

Jar to include layered mix, recipe on a 3x5 card and a plate with six (6) cookies

CLASS

15. Cookie Mix in a Jar

PIES, PASTRIES & CONFECTIONS

One standard pie or Six pastries or Confections

DIVISION 119 -PRESCHOOL - 2nd GRADE

DIVISION 120 - 3rd - 5th GRADE

DIVISION 121 - 6th - 8th GRADE

DIVISION 122 - 9th - 12th GRADE

DIVISION 123 - ADULT 18 yrs. & OLDER

WHOLE PIES, CRUMB CRUST

CLASS

1. Cream
2. Fruit
3. Any other

WHOLE PIES, ONE CRUST – DOUGH

CLASS

4. Apple
5. Chocolate
6. Cream
7. Lemon
8. Pecan
9. Pumpkin
10. Strawberry with glaze
11. Walnut
12. Any other

WHOLE PIES, TWO CRUSTS, DOUGH

CLASS

13. Apple
14. Berry, Specify
15. Any other, specify

CHEESECAKE

CLASS

16. Plain
17. Fancy

PASTRIES

Six Pastries

CLASS

18. Tarts
19. Turnovers
20. Cream Puffs
21. Éclairs
22. Any other, specify

CONFECTIONS

Six pieces

CLASS

23. Caramels

24. Cereal Candies
25. Dipped Chocolate
26. Nut Brittle
27. Divinity
28. Any other, specify



PRESERVED FOOD

Entry Fee

Adult Divisions -\$2.00

Youth Divisions -\$1.00

Entry Limit

2 entries per class

Premiums

Adult Divisions

JUDGED AMERICAN

1st	2nd	3rd
\$6.00	\$4.00	Ribbon

Youth Divisions

Ribbons Only

DIVISION 125- PRESCHOOL - 2nd GRADE

DIVISION 126 - 3rd - 5th GRADE

DIVISION 127 - 6th - 8th GRADE

DIVISION 128 - 9th - 12th GRADE

DIVISION 129 - ADULT 18 yrs. & OLDER

CANNED FRUITS & FRUIT JUICES

Standard Pint or Quart Jar

CLASS

1. Applesauce

2. Apricots
3. Berries - Specify
4. Cherries
5. Fruit juice - Specify
6. Pears
7. Peaches - Specify Variety
8. Any other fruit or juice - Specify

DRIED FOODS

6 pieces in a self-sealing bag

CLASS

9. Dried fruits
10. Dried vegetables
11. Jerky
12. Trail mix
13. Granola
14. Leathers, any kind
15. Herbs
16. Dried fish
17. Smoked fish
18. Any other dried food - specify

JAMS

No Kool-Aid Jams - standard pint or 1/2-pint jar

CLASS

19. Apricot/pineapple
20. Blackberry
21. Boysenberry
22. Cherry
23. Olallieberry
24. Plum
25. Raspberry
26. Strawberry
27. Sugar free jam - Specify
28. Any other specify

JELLIES

No Kool-Aid Jellies - Standard pint or ½ pint jar

CLASS

29. Apple
30. Blackberry
31. Boysenberry
32. Cherry
33. Grape
34. Mint
35. Pepper, red/green pepper
36. Plum
37. Raspberry
38. Wine
39. Any other - Specify

MARMALADES, BUTTERS & CHUTNEYS

Standard pint or ½ pint jar

CLASS

- 40. Fruit butter, any
- 41. Marmalade, citrus or fruit
- 42. Chutney, any kind
- 43. Any other - Specify

PICKLES, RELISHES, SAUCES

(Standard ½ pint, pint or quart jar)

PICKLES

CLASS

- 44. Cucumber bread & butter
- 45. Cucumber, dill
- 46. Cucumber, sweet
- 47. Fruit pickles
- 48. Mixed vegetable pickles
- 49. Pickled peppers
- 50. Any other pickle, not gourmet, specify on entry form
- 51. Any other gourmet fruit or vegetable, specify

RELISHES

CLASS

- 52. Chow-Chow relish
- 53. Corn relish
- 54. Any other relish, specify

SAUCES & SALSAS

CLASS

- 55. Barbecue sauce
- 56. Chili sauce
- 57. Tomato sauce
- 58. Salsa, red
- 59. Salsa, green
- 60. Any other sauce, specify on entry form

VEGETABLES & VEGETABLE JUICES

CANNED

Standard pint or quart jar

VEGETABLES

CLASS

- 61. Asparagus
- 62. Bean— green, snap & wax
- 63. Carrots
- 64. Corn
- 65. Tomatoes
- 66. Any other canned vegetable, specify

VEGETABLE JUICES

CLASS

- 67. Any vegetable juice, Specify

VINEGAR & SALAD DRESSINGS

In glass bottles or decaners

CLASS

- 68. Garlic
- 69. Herb
- 70. Vinegar
- 71. Any other dressing, specify

CLOTHING AND TEXTILES

RULES

- 1. Limit: Two different entries per exhibitor per class.
- 2. Adult Divisions judged American, Youth Divisions judged Danish.
- 3. All entries in these divisions must be produced by the exhibitor within last 12 months
- 4. No soiled clothing or textiles will be accepted.
- 5. No cork, metal, wood, etc. All pictures and wall hangings must be framed or mounted and ready for hanging.
- 6. Garments must arrive on hangers & clear plastic bags.
- 7. Sweepstakes will be awarded according to State Rules. At least 3 exhibitors with at least a combined total of 30 points & an exhibitor must have a minimum of 10 points, adult divisions only.

Entry Fee

Adult Divisions - \$2.00 per entry.

Youth Divisions - \$1.00 per entry.

Limit 2 Entries per class

Premiums

Adult Divisions

1st	2nd	3rd
\$4.00	\$3.00	Ribbon

Youth Divisions

Ribbons Only



SEWING

DIVISION 130 - PRESCHOOL - 2nd GRADE

DIVISION 131 - 3rd - 5th GRADE

DIVISION 132 - 6th - 8th GRADE

DIVISION 133 - 9th - 12th GRADE

DIVISION 134 - ADULT 18 yrs. & OLDER

SEWING - INFANT CLOTHING- 3 YEARS

CLASS

1. Costume/Decorative clothing - Specify theme
(Articles judged on both construction & decoration.)
2. Bibs
3. Sleepwear
4. Romper
5. Sun suit
6. Dress
7. Boy's suit
8. Christening gown
9. Any other infant clothing

SEWING - CHILDREN'S CLOTHING

CLASS

10. Costume/decorative clothing- Specify theme
(Articles judged on both construction & decoration.)
11. Coat or jacket
12. Dress
13. Jumper
14. Pants
15. Shorts
16. Shirt
17. Blouse
18. Skirt
19. Sleepwear
20. Girl's outfit, 2 or more pieces (not listed above)
21. Boy's outfit, 2 or more pieces (not listed above)
22. Any other children's clothing not listed above
23. Quinceanera Gown

SEWING - ADULT CLOTHING

CLASS

24. Blouse/Shirt/Vest
25. Bridal attire (Bride, attendant, Mother, Groom, etc)
26. Costume/Decorative clothing- Specify theme
(Articles judged on both construction & decoration.)
27. Dress, casual
28. Dress, fancy
29. Ensemble (2 or more pieces)
30. Jumper
31. Jumpsuit
32. Shorts
33. Pants/Slacks
34. Sweat suit/Sports clothes
35. Swimsuit
36. Holiday clothing
37. Quinceanera Gown
38. Any other adult clothing

SEASONAL & MISCELLANEOUS SEWING

CLASS

39. Animals Stuffed
40. Handmade Dolls, Doll clothing
41. Holiday Decoration, specify
42. Pillow or pillowcase
43. Any other not listed above, specify
44. Group project, specify & list name on a 3x5" card

TEXTILES

DIVISION 140 - PRESCHOOL - 2nd GRADE

DIVISION 141 - 3rd - 5th GRADE

DIVISION 142 - 6th - 8th GRADE

DIVISION 143 - 9th - 12th GRADE

DIVISION 144 - ADULT 18 yrs & OLDER

CROCHET WEARING APPAREL

CLASS

1. Christening Set
2. Infant Set
3. Any crocheted wearing apparel, specify
4. Any crocheted clothing accessory

CROCHET HOME FURNISHINGS

CLASS

5. Afghan - crib size

6. Afghan - bed size, specify size
7. Afghan - Granny Square
8. Afghan - pattern added
9. Afghan - original design or pattern, any item
10. Tablecloth
11. Table linens - 1 to 5 pieces
12. Doilies
13. Pillow
14. Any other, specify
15. Any other original design or pattern, specify

SEASONAL & MISCELLANEOUS

CROCHET

CLASS

16. Animals, Stuffed
17. Handmade Dolls, Doll clothing
18. Holiday Decoration, specify
19. Any other not listed above, specify

EMBROIDERY, CROSS STITCH, COUNTED CROSS STITCH & CREWEL

WEARING APPAREL

CLASS

20. Original design, any item

HOME FURNISHINGS

CLASS

21. Tablecloth
22. Table linens - 1 to 5 pieces
23. Picture, framed
24. Pillow
25. Pillow cases - set of 2
26. Wall hanging
27. Any printed cross stitch, specify
28. Any other item, specify

RUGS

CLASS

29. Latch hook
30. Braided
31. Crocheted

NEEDLEPOINT

CLASS

32. Pillow
33. Picture, framed or mounted
34. Petite point - any item, specify
35. Original design - any item, specify
36. Seasonal needlepoint item, specify
37. Kits - any item, specify

38. Any other, specify

KNITTING

KNITTED WEARING APPAREL

CLASS

39. Christening set
40. Infant Set
41. Any knitted wearing apparel, specify
42. Any knitted clothing accessory

KNITTED HOME FURNISHINGS

CLASS

43. Afghan - crib size
44. Afghan - bed size, specify size
45. Afghan - pattern added
46. Afghan - original design or pattern, any item
47. Tablecloth
48. Table linens - 1 to 5 pieces
49. Doilies
50. Pillow
51. Hot plate mats, (textiles only, no cork, metal, wood etc.)
52. Pot holders (set of two)
53. Any other original design or pattern, specify

MACHINE KNITTING

CLASS

54. Home Furnishings, specify
55. Apparel, specify
56. Any other, specify

SEASONAL OR MISCELLANEOUS

KNITTING

CLASS

57. Animals, mop style
58. Animals, stuffed
59. Doll clothes
60. Dolls
61. Plastic canvas
62. Christmas ornament
63. Christmas stocking
64. Any other seasonal decoration
65. Holiday ornament
66. Any other holiday decoration- specify
67. Any other knitting work not mentioned above, specify

QUILTS & QUILTING

Quilts Received.....10am - 2pm, Friday, May 3rd

1. All quilts must have sleeves.
2. Quilts may have been started in years prior to current Fair year, but must have been completed within the last 12 months
3. Sweepstakes will be awarded according to State Rules. At least (3) exhibitors with at least a combined total of 30 points & an exhibitor must have a minimum of 10 points, adults only.
4. Entire quilt may not be displayed due to space restrictions. Fair may fold quilts to display them.
5. Quilts may be moved into a different class at the discretion of the judge or staff.

Entry Fee

Adult Divisions - \$2.00 per entry.

Youth Divisions - \$1.00 per entry.

No Limit on Entries per class

Premiums

Adult Divisions

Judged American

1st	2nd	3rd
\$7.00	\$5.00	Ribbon

Youth Divisions

Judged Danish

Ribbons Only

ADULT QUILTS

18 YEARS & OLDER

DIVISION 150 - HAND QUILTED by EXHIBITOR

DIVISION 151 - HAND QUILTED BY OTHER

DIVISION 152 -MACHINE QUILTED by EXHIBITOR

DIVISION 153 - MACHINE QUILTED BY OTHER

DIVISION 154 - TIED

DIVISION 155 - GROUP QUILT

DIVISION 156 - FIRST QUILT

DIVISION 157 - ART QUILT

CLASS

Table Runner

1. Pieced
2. Appliqué (with or without piecing)

3. Foundation pieced

4. Holiday

5. Fair Theme

6. Any other

X-Small - Perimeter less than 100"

7. Pieced

8. Appliqué (with or without piecing)

9. Foundation pieced

10. Holiday

11. Fair Theme

12. Any other

Small - Perimeter 101"-200"

13. Pieced

14. Appliqué (with or without piecing)

15. Foundation pieced

16. Holiday

17. Fair Theme

18. Any other

Medium - Perimeter 201"-275"

19. Pieced

20. Appliqué (with or without piecing)

21. Foundation pieced

22. Holiday

23. Fair Theme

24. Any other

Large - Perimeter 276"- 400"

25. Pieced

26. Appliqué (with or without piecing)

27. Foundation pieced

28. Holiday

29. Fair Theme

30. Any other

X-Large- Perimeter over 400"

31. Pieced

32. Appliqué (with or without piecing)

33. Foundation pieced

34. Holiday

35. Fair Theme

36. Any other

DIVISION 158 – QUILT BLOCK

Make a quilt block of contemporary or traditional design, using any technique or pattern of your choice. Block must use at least three 100% cotton fabrics.

No Entry Fee - No Premiums – Ribbons Only

CLASS

1. Contemporary Design

2. Traditional Design

YOUTH QUILTS

Under 18 years old

DIVISION 159 - HAND QUILTED by EXHIBITOR

DIVISION 160 - HAND QUILTED BY OTHER

DIVISION 161 -MACHINE QUILTED by EXHIBITOR

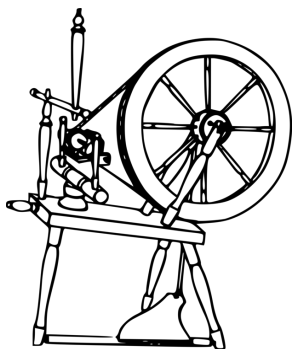
DIVISION 162 - MACHINE QUILTED BY OTHER

DIVISION 163 - TIED

DIVISION 164- Fleece No Sew Tied Blanket

CLASS

1. First Quilt
2. Miniature
3. Wall Hanging
4. Small Quilt
5. Large Quilt
6. Group Quilt
7. Any Other, specify



SPINNERS AND WEAVERS **HANDCRAFTED WOOL**

RULES:

1. Entries must have been prepared by the exhibitor within the last 12 months
2. Handspun Yarns: Please specify in each class:
 - Single Ply
 - 2-Ply
 - Multi-Ply (3 or more) or if entry is Novelty.
4. Please provide a 3x5 card with the following information
 - a. Division/Class
 - b. Grade of Fleece
 - c. Breed of Sheep, if known (fine, medium, course)
 - d. Source, if dyed
 - e. Intended use
 - f. Source of fleece

Entry Fee

Adult Divisions -\$2.00

Youth Divisions -\$1.00

Premiums

Adult Divisions

JUDGED AMERICAN

1st	2nd	3rd
\$7.00	\$5.00	Ribbon

Youth Divisions

Ribbons Only

HANDSPUN YARNS

Yarns must be spun from wool, mohair, angora, or llama/alpaca or any other mammal fibers. These fibers may have been dyed with natural or chemical dyes. If using natural dyes, the mordant should be specified. Please note if spun in grease and not yet washed. Be as specific as possible as to intended use. Please attach a small fleece sample to the 3x5 card.

DIVISION 169 - YOUTH YARNS

DIVISION 170 - ADULT YARNS

HANDSPUN YARNS

CLASS

1. Washed Natural Colored Wool Yarn
2. Washed White Wool Yarn
3. Mohair Yarn
4. Angora Rabbit Yarn
5. Llama/Alpaca Wool Yarn
6. Synthetic-Dyed White Yarn
7. Vegetable-Dyed White Yarn
8. Any other Mammal Handspun Yarn

HANDCRAFTED WOOL & BLENDS

CLASS

9. Accessories - Hats, Scarves, etc., specify
10. Afghans/Blankets
11. Article of clothing - hand woven, weft of hand spun
12. Article of clothing - Knitted or crocheted (specify)
13. Rugs/Tapestry/Weaving content weft of hand spun
14. Any other Handcrafted Item Wool (specify on entry form)

HAND WEAVING ANY FIBER

CLASS

15. Article of clothing
16. Rugs/tapestry

17. Accessories – hats, scarves, etc.

Table Settings

Entry Fee

\$2.00 per entry

Entry Limit

2 per class

Adult Premiums

American Style Judging

1st	2nd	3rd
\$7.00	\$5.00	Ribbon

Youth Premiums

Ribbons Only

TABLE SETTING

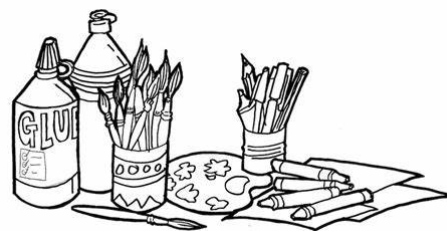
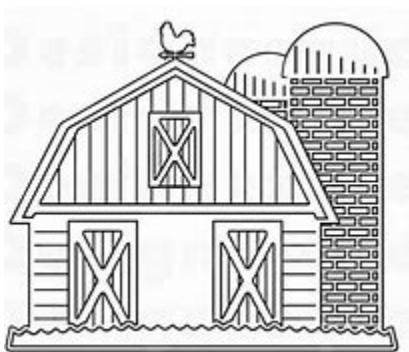
Must supply your own card table and all setting materials.

DIVISION 175 - YOUTH UNDER 18 YRS OLD

DIVISION 176 - ADULT 18 YRS & OLDER

CLASS

1. Birthday Party/Quinceanera Table
2. Holiday
3. Fair theme
4. Any other



ARTS & CRAFTS

DARLA MANTEL, Director

CHERYL SILVA, Superintendent

Entries accepted online only until 11:59 pm April 1st

Entries received at SVF Cafeteria 2023

Entries Received.....Schools.....3 pm - 6 pm, Fri, May 10

All other entries.....9 am - 3 pm, Sat, May 11

Exhibits released.....12 pm - 4 pm, Mon, May 20

RULES

1. Any project(s) not picked up by close of business on Friday of Memorial Day weekend, shall become the property of the Salinas Valley Fair
2. All oils, acrylics, and watercolors must be framed and ready to hang.
3. Work must have been completed by exhibitor within the last year and may not have been exhibited previously at the Salinas Valley Fair. Entries will be screened for quality standards.
4. All entries must be the original work of the exhibitor.
5. Each entry must be labeled on the back with the artist's name, address, telephone number, division, and class.
6. The Salinas Valley Fair will not be responsible/liable for loss or damage from any cause. All precautions will be taken to protect the entries.
7. Semi-Professionals: If an exhibit is for sale, the price must be given on entry form and on exhibits. No commission will be charged. A card must be attached to the exhibit with name, address and the price clearly marked.

ADULT - AMATEURS

Adults who engage in Art and Craft work as a hobby, whose return from sales, if any, does not exceed the cost of materials for the articles sold and who are not otherwise remunerated on account of engaging in this work except for cash prizes or premium awards.

ADULT SEMI-PROFESSIONALS

Adults who engage in art work as a hobby and whose return from sales in this work does not exceed \$5,000 per year.

Entry Fee

\$2.00 per entry

Entry Limit

2 entries per class

Premiums- Amateur Only

1st	2nd	3rd
\$7.00	\$5.00	Ribbon

Awards

Best of Show

ADULT ART

DIVISION 200 - AMATEUR ART

DIVISION 201 - SEMI PRO ART CLASS

1. Oil
2. Watercolor
3. Acrylic
4. Pen, Felt Pen & Charcoal
5. Any Other

ADULT CRAFTS

DIVISION 202 - AMATEUR CRAFTS

DIVISION 203 - SEMI PRO CRAFTS CLASS

1. Antler Art
2. Baskets/Wreath decorated
3. Candle Making
4. Cricut Creations - must be made using a Circuit
5. Decoupage
6. Handmade cards
7. Jewelry
8. Decorated Mailbox -any size
9. Paper Mache
10. Pottery, thrown or hand built

11. Scrapbooks
12. Seasonal Craft
13. Stepping Stone
14. Tie dye item
15. Weaving
16. Wedding Crafts- Favors, etc.
17. Window Decorating- max 2'x3'
18. Woodcraft
19. Yard Art
20. Any other craft, specify

JR. ARTS & CRAFTS

DARLA MANTEL, Director

CHERYL SILVA, Superintendent

ENTRY OFFICE: 831-385-3538

Entries received at the SVF Cafeteria 2022

Entries accepted online only until 11:59 pm April 1st

Entries Received.....Schools.....2 pm - 6 pm, Fri, May 12

All other entries.....9 am - 4 pm, Sat, May 13

Exhibits released.....12 pm - 4 pm, Mon, May 22

Those bringing multiple entries will be required to stay through receiving of those entries. THANK YOU!

Teachers entering classroom art

We are going back to our original way of entering classroom art, using a **Paper Entry**.

- Please use one paper per classroom project
- Each student listed on the form must be accompanied by a \$1 entry fee.
- Entries may be dropped off at the SVF office, entry fees must be attached.
- **Entries due no later than April 1st**

RULES

1. Jr. exhibitors must be under the age of 18 years old, or still enrolled in school, excluding college.
2. Any project(s) not picked up by close of business on Friday of Memorial Day weekend, shall become the property of the Salinas Valley Fair
3. **Entries must be labeled on the back of the project Name, Phone number, Division, & class. School & Student & Teachers name if entering as school art.**

4. All entries must be the original work of the exhibitor and have been completed within the last year. Entries may not have been exhibited previously at the Salinas Valley Fair. Entries will be screened for quality standards.
6. All oils, acrylics, watercolors, drawings must be matted and ready to hang. Image area no larger than 12" x 18" or 17" x 23" w/matting. No frames, please!
7. The SVF will not be responsible/liable for loss or damage from any cause. All precautions will be taken to protect the entries.
8. Special Stars is a class for any individual with any type of disability. Entry tag will NOT mention disability.

Entry Fee

\$1.00 per entry

Premiums

Ribbons Only

One entry per exhibitor per class

DIVISION 204 – 2-4 Year olds

DIVISION 205 – Preschool -Kinder

DIVISION 206 – 1st - 2nd Grade

DIVISION 207 – 3rd - 4th Grade

DIVISION 208 – 5th - 6th Grade

DIVISION 209 – 7th - 8th Grade

DIVISION 210 – 9th - 12th Grade

DIVISION 211 – Special Stars - All Ages

JR. ART

CLASS

1. Painting - Oil, Acrylic or Watercolor
2. Drawing - Pencil, Pen, Charcoal, Oil Pastel, Mixed Media
3. Hand Art - The making of animals using a hand print

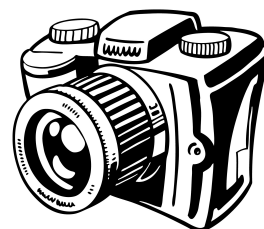
JR. CRAFTS

Due to limited exhibit space, please indicate if the project is larger than 2' x 3'. Please read the entry guide carefully.

CLASS

4. Baskets/Wreath decorated
5. Crayon melted art
6. Decoupage
7. Dough Art
8. Handmade cards
9. Hand puppet
10. Jewelry
11. Lego Design
12. Decorated Mailbox- any size
13. Missions, Limit size of base 2'x3'

14. Mobiles
15. Models, (no missions) Limit size of base 2'x3'
16. Organic Art
17. Paper Mache
18. Pottery, thrown or hand built
19. Scrapbooks
20. Seasonal Craft
21. Wedding Crafts- Favors, etc.
22. Weaving
23. Window Decorating- max 2'x3'
24. Woodcraft
25. Any other
26. **Class project** - This is 1 project worked on by many students. Please submit a 3x5 card with names of students, only 1 ribbon will be awarded to the entry.



PHOTOGRAPHY

OSCAR AVALOS, Director

CAROL BROWN-SILVA, Supervisor

ENTRY OFFICE - 385-3538

Entries accepted online only until 11:59 pm April 1st

Entries Received.....9 am - 4 pm, Sat, May 11

Exhibits Released.....12 am - 4 pm, Mon, May 20

RULES

1. Adult divisions for exhibitors 18 years and older
2. NO limit on items per class per exhibitor & no exhibitor shall receive more than two awards in any one class using American Judging per State Rules, See "Awards & Scoring".
4. All entries must be the original work of the exhibitor with the photographer's name, address, telephone number, division, and class on the back of each entry. No names on the front of the photo or matting, please.
5. Photographs must have been taken within the last 12 months

6. While all precautions will be taken to protect the entries, the Salinas Valley Fair, including its paid and volunteer staff, will not be held responsible for loss or damage from any cause.
7. **Photos may be either salon or flush mounted.** See descriptions below
8. Any color mount board which offers a visually pleasing presentation is acceptable.
9. Judge(s) selected to judge the photographs, may, at their sole discretion, disqualify print for any reason including the subject matter or content of the photograph or any photo not mounted, except for "specialty prints".
10. 8" x 10" preferred, 5" x 7" properly mounted will be accepted.
11. **Photos must be the work of the exhibitor.** An image search will be conducted of photos suspected of plagiarism.

Judging based on

Impact: effect on the viewer, strong emphasis on subject, readability, creativity of vision.

Composition: coherent design, or engaging arrangement of elements.

Technical Quality: Detail in highlight and shadows; sharpness; use of shutter speed, depth of field; color; balance, tonal values & mastery of techniques.

DESCRIPTION OF CLASSES/TERMS

- **Amateur** - Exhibitor who participates in Photography as a hobby and not as a livelihood. Exhibitors who are employed, share a studio, lab or equipment with any professional photographer will be considered as a professional.
- **Documentary** - Unposed scene showing an event or an example of life. (Examples-an overview or particular aspect of a tragedy such as a fire or accident, birthday party, community event, anything that explains the human condition.)
- **Fair Theme**- Photos that reflect or represent in some way the concept of this year's fair theme.
- **Flush Mount** - A picture mounted FLUSH to a mounting medium such as Foam Core, so that no outside border is visible i.e., 8"x10" photo on 8"x10" mount. Item may not be framed or covered by glass or plastic.
- **Macro Photography**- Extremely close-up photography in which the image on the film is as large as, or larger than the subject.

- **Manipulated Images** – Double exposures, darkroom processes that create images, tinting or black & white prints, digital effects & deformations.
- **Max print size** 8" x 10"
- **Max mounting** medium 11" x 14"
- **Minimum print size**- 8" x 10" unless otherwise stated (Properly mounted 5" x 7" will be accepted)
- **Salon Mount** – Attaching your photo to a Matted border, i.e., 8"x10" photo with 11"x14" Matted mount. Item may not be framed or covered by glass or plastic.
- **Specialty Print**- Photo printed on Wood, Canvas or metal medium.

Entry Fee

Youth Divisions

\$1.00 per entry- ***Ribbons Awarded Only***

Adult Divisions

\$3.00 per entry- ***Premiums Awarded***

Premiums

1st	2nd	3rd
\$10.00	\$8.00	Ribbon

DIVISION 300- Preschool-2nd Grade

DIVISION 301- 3rd-5th Grade

DIVISION 302- 6th-8th Grade

DIVISION 303- Special Stars

DIVISION 304- 9th-12th Grade

DIVISION 305- Adult Amateur

DIVISION 306- Adult Novice *

***Novice = Adults who have never entered the SVF**

COLOR PRINTS

CLASS

1. Action
2. Architecture
3. Children- Unposed or at play
4. Children- Portrait
5. Documentary
6. Domestic Animals
7. Drone images
8. Garden Photography
9. Landscape
10. Macro or Micro Photography
11. Machinery
12. Manipulated Images
13. National Park
14. Night/Light Photography

15. Portrait - People
16. Portrait - Pet
17. Seascape or water scene
18. Sepia
19. Sunrise/Sunset
20. Still life
21. Transportation
22. Travel
23. Wildlife
24. Any other

BLACK & WHITE PRINTS

25. Action
26. Architecture
27. Children
28. Documentary
29. Domestic Animals
30. Garden Photography
31. Landscape
32. Macro or Micro Photography
33. Manipulated Images
34. National Park
35. Portrait - People
36. Portrait - Pet
37. Still life
38. Transportation
39. Travel
40. Any other

SPECIALTY PRINTS

CLASS

41. Wood Prints
42. Canvas Prints
43. Metal Prints

FAIR PHOTO

CLASS

44. Fair Theme
45. Any other fair photo

CALIFORNIA STATE PARKS

PHOTO CONTEST

Capture images of the beaches, mountains, deserts, forests, waterways, and historic parks that make up the California State Parks Systems. Please include Park Name on the Entry.

NO Entry Fee
Awards Given

State Park Ribbon
Day pass to any State Park- 1st Place
Lapel Pin- 1st - 3rd place

CALIFORNIA STATE PARKS

DIVISION 307- Preschool-2nd Grade

DIVISION 308- 3rd-5th Grade

DIVISION 309- 6th-8th Grade

DIVISION 310- 9th-12th Grade

DIVISION 311- Adult Amateur

CLASS

1. **Our beautiful parks** - Scenic views
2. **Recreation in our parks** - Photographs of park activity
3. **What our parks can teach us** - California History, Wildlife & Ecology

INDUSTRIAL **ARTS &** **TECHNOLOGY**

OSCAR AVALOS, Director

CAROL BROWN SILVA, Supervisor

Entries accepted online only until 11:59 pm April 1st

Entries Received.....9 am - 4 pm, Sat, May 13

Exhibits Released.....12 am - 4 pm, Mon, May 22

RULES

1. Adult Amateur exhibitors, Group Projects & students **not enrolled in a FFA Class or 4H Project.**
2. Projects must have been started and completed during the 12 months
3. All entries must be original work of the exhibitor, Any wood craft kits should be entered in the Arts & Crafts Dept.
4. If exhibit is offered for sale, the price must be given on the entry form and on the exhibit. No commission will be charged. A 3"x5" card must be attached to the exhibit with the name, phone number, school name if applicable & price.

5. Open-Source Development tool kits such as; Adafruit, Arduino, BeagleBoard and spark fun, are inexpensive examples of what is available. The SVF does not endorse any particular kit. For a more complete hardware directory, visit https://wiki.p2pfoundation.net/Product_Hacking
6. Not eligible for silent auction
7. Exhibits not picked up within 30 days of the fair become the property of the SVF

Entry Fee

\$2.00 per entry

Premiums

Youth Divisions

Ribbons Only

Adult Division

1st	2nd	3rd
\$5.00	\$3.00	Ribbon

DIVISION 351 – 3rd-5th Grade

DIVISION 352 – 6th -8th Grade

DIVISION 353 –Special Stars All Ages

DIVISION 354 - 9th -12th Grade

DIVISION 355 – Open Adult

DIVISION 356 - Group Project

ARCHITECTURAL PLANS

CLASS

1. Plans set (including floor plan, plot plan, exterior elevations, foundation plan, and details)
2. Floor plan
3. Landscape/plot plan
4. Architectural rendering or presentation drawing.

CAD DRAFTING

CLASS

5. Engineering
6. Architectural
7. Schematics

WOODWORKING

CLASS

8. Clock
9. Furniture
10. Toys
11. Turnings
12. Wood Carving
13. Reclaimed Wood
14. Any other wood project

METAL FABRICATION

FORGED OR WELDED

Small Project- measures up to 12” length, width or height.

Medium Project- measuring 12”- 24” length, width or height

Large Project- Measuring 24”-36” length, width or height

CLASS

15. Small projects
16. Medium projects
17. Large projects

OPEN-SOURCE HARDWARE

CLASS

18. From Kit
19. Any other Original Design

ROBOTICS

CLASS

20. From Kit
21. Any other Original Design



FFA EXHIBITS

STEVEN HANDLEY, Director

JESSICA HANDLEY, Supervisor

Entries accepted online only until 11:59 pm April 1st

Entries Received at Orradre Bldg.....3pm - 6pm, Fri May 10

.....or9am - 4pm, Sat, May 11

Exhibits Released.....8am - 4pm, Mon, May 20

**CHAPTERS BRINGING 10 ITEMS OR MORE PLEASE CALL
ENTRY OFFICE 385-3538 FOR APPOINTMENT.**

DEPARTMENT AWARDS

Debbie Benson Outstanding FFA Chapter- \$250

Awarded to the FFA Chapter scoring the highest points
in all FFA Still Exhibit Divisions

Ag Mech Outstanding Exhibitor-\$50.00

Awarded to the Ag Mech exhibitor scoring the highest points.
Points calculated using State Rules for Sweepstakes.

FFA AG MECHANICS **& ENGINEERING**

RULES

1. Students entering exhibits in Agricultural Mechanics must be regularly enrolled in a high school that is following the California State Plan for vocational agriculture.
2. Although the exhibits need not be owned by the exhibitor, all must be the products of students as a regular part of their instructions in Agricultural Mechanics for the past year. The student exhibitor must have been at least a major contributor to the building or repairing of the exhibit. No entry may be shown for more than one calendar year. An article may not be entered in more than one class and each exhibitor may not enter more than one article from the same pattern.
3. Use size requirements outlined under each division as a guideline on where to enter projects (i.e. Large, Medium or Small). If any questions arise, please call the Salinas Valley Fair Entry Office.
4. If an exhibit is offered for sale, a 5" x 8" card must be attached to the exhibit with name, phone number, chapter or school name, and price clearly readable. This must be placed on the item after judging day. A 10% commission will be charged.
5. All projects must be labeled with the exhibitor's name, division & class or they will not be received.
6. The Salinas Valley Fair reserves the right to reclassify entries based on specific size criteria outlined in each specific division/class.

Entry Fee

\$2.00 per entry

Entry Limit

2 Entries per class per exhibitor

Premiums

Ribbons Only

BASIC WELDING

DIVISION 400 – ACETYLENE WELDING

Each Pass must be 4" long

All pads must be 2 beads and 4" long

CLASS

- | | |
|----------------|---------------------------|
| 1. Butt weld | 4. Lap weld |
| 2. Corner weld | 5. Pipe to flat |
| 3. Fillet weld | 6. Stinger beads with rod |

DIVISION 401 – ARC (ELECTRIC) WELDING

All passes must be 4" long

All pads must be 2 beads and 4" long.

CLASS

1. Bead Pad
2. Butt weld
3. Corner weld
4. Fillet weld
5. Lap weld
6. Pipe to flat

DIVISION 402 – MIG WELDING

Pads must include 2 beads that are 6" long

CLASS

1. MIG weld
2. MIG butt weld
3. MIG corner weld
4. MIG fillet weld

DIVISION 403 – TIG WELDING

Pads must include 2 beads that are 6" long

CLASS

1. TIG weld
2. TIG butt weld
3. TIG corner weld
4. TIG fillet weld

AG ENGINEERING &

AG MECHANICS-SMALL PROJECTS

A small project is one that measures no more than 24" in
length, width or height

DIVISION 410 -MASONRY

CLASS

1. Stepping Stone
2. Planter
3. Any other like item

DIVISION 411 – COLD METAL

CLASS

1. Box
2. Clipboard
3. Feed scoop
4. Any other like item

DIVISION 412 – ELECTRICAL

CLASS

1. Electric Board
2. Any other like item
3. Any item, copper wiring

DIVISION 413 –PLUMBING

CLASS

1. Any item, metal
2. Any item, plastic
3. Any other

DIVISION 414 – ROPE WORK

CLASS

1. Adjustable halter
2. Knot board
3. Any other like item, type must be labeled

DIVISION 415 - TAXIDERMY

CLASS

1. Small Taxidermy Project

DIVISION 417 – WELDING

CLASS

1. Metal Rose
2. Any horseshoe item
3. BBQ or fireplace tool
4. Boot scraper
5. Any other like item

DIVISION 418 – WOODWORKING

CLASS

1. Cabinet
2. Footstool

3. Hanging planter
4. Tool Box
5. Cutting board
6. Small Wine Barrel Project
7. Picture Frame
8. Sign
9. Any other like item

AG ENGINEERING & AG MECHANICS - MEDIUM PROJECTS

**A medium project is one that measures between 24” -36”
in length, width or height**

DIVISION 425 – WELDING

CLASS

1. Barbecue
2. BBQ or fireplace tool
3. Any other like item

DIVISION 426 – WOODWORK

CLASS

1. Saw horse
2. Sign
3. Medium wine barrel project (i.e., half barrel planter)
4. Any other like item

AG ENGINEERING & AG MECHANICS - LARGE PROJECTS

**A large project is one that measures 36” and above in
length, width or height**

Entry Fee

\$2.00 per entry

Divisions 429 - 430

Premiums

Ribbons Only

DIVISION 429 - WOODWORKING

CLASS

1. Large wine barrel project (i.e., cooler, table, full bar chair)
2. Any other like item

DIVISION 430 - WELDING

CLASS

1. BBQ
2. Any other like item

AG ENGINEERING **MISCELLANEOUS PROJECTS**

ENTRY FEE

\$2.00 per entry

ENTRY LIMIT

2 Entries per class per exhibitor

PREMIUMS

Ribbons Only

CAD - DESIGN PLANS **COMPUTERIZED DRAFTING**

Plans must be mounted to a poster board measuring not more than 22"x28", Not tri-fold

DIVISION 433 - CAD

CLASS

1. Project design

CNC - PLASMA CUTTING & **3D PRINTING**

All projects must include plan or design used to cut piece

DIVISION 434 - CNC

DIVISION 435 - PLASMA CUTTING

DIVISION 436 - 3D PRINTING

CLASS

1. Small project - 24" and under
2. Medium project - 24"-36"
3. Large project- 36" and above

FFA AG MECHANICS SILENT **AUCTION**

A 10% commission will be taken on all sold items

Entry Fee

\$2.00 per entry

Premiums

RIBBONS ONLY

1. **Only 1st place items** will be moved to the Rava Arena to be sold at auction.

2. Exhibitors must move their projects to the Rava Arena by 6 am, Saturday morning of the auction.
3. Silent Auction items will be available for bidding starting Thursday at Noon.
4. Bidding ends Saturday of the Fair, 30 minutes after the conclusion of the Junior Livestock Auction.
5. Starting bids will be as follows, unless discussed with the Department Superintendent on Saturday Receiving Day;
Small Projects - \$75
Medium projects - \$100
Large Projects - \$150
6. No entries will be moved into the Auction division after check in day.
7. Any entries wishing to add a reserve to their entry must declare the reserve on Saturday Receiving Day.

DIVISION 440 - FFA Silent Auction Individual **DIVISION 441 - FFA Silent Auction Group Project** **CLASS**

1. Small project
2. Medium project
3. Large Project

FFA AG SCIENCE

STEVEN HANDLEY, Director
JESSICA HANDLEY, Supervisor

Entries accepted online only until 11:59 pm April 1st

Entries Received........3pm - 6pm, Fri May 12

.....or9am - 4pm, Sat, May 13

Exhibits Released.....8am - 4pm, Mon, May 22

RULES

1. All entries must have been made within last 12 months
2. Each chapter should submit one USB drive with all entries included on it. All USBs should be included in one folder for Agricultural Science and one folder for Ag Research Projects. All USBs will be returned to the chapter on Monday, when entries are released.
3. All entries should be included in the appropriate folder, named as the following:
First/Last Students name/Division/Class/Chapter.
4. All entries must be submitted in the following file formats: PowerPoint or PDF. Submissions should not exceed 2 MB in size and should be optimized for screen display. All

presentations should be submitted in standard view presentation.

5. All entries must contain truthful information and cite sources when appropriate. If exhibits are found to contain untruthful information, they will be disqualified.
6. All entries should include a cover page that includes the exhibitor Name/Chapter/Division/Class & should not exceed 10 pages.
7. All presentations should be educational and be presentable to the public. Any presentations deemed unviewable for the public will not be shown/displayed.
8. For Research Project Only: An Agriscience research project is a practical, hands-on, project that includes the scientific method, to answer a real scientific problem that relates to agriculture. All presentations should include at least one presentation page on: hypothesis/problem to be solved, research methods with examples and data, and conclusion.
9. If help is needed with PowerPoint, please contact the Entry Office at 831-385-3243
10. POSTERS WILL NO LONGER BE ACCEPTED

Entry Fee

\$2.00 per entry

Entry Limit

1 entry per class per exhibitor

Premiums

Ribbons Only

DIVISION 450– FFA AG RESEARCH PRESENTATION

CLASS

1. Biochemistry/Microbiology/Food Science

Biology of microorganisms-bacteriology, virology, protozoology, fungi, bacterial genetics, yeast. This area may also include chemistry of life processes-molecular biology, molecular genetics, enzymes, photosynthesis, protein chemistry, food chemistry, hormones, etc.

2. Environmental Sciences

Study of pollution (air, water and land) sources and their control; ecology. Waste water, drainage and tillage types.

3. Animal Science

Study of animals-animal genetics, ornithology, ichthyology, entomology, animal ecology,

paleontology, cellular physiology, animal husbandry, cytology, histology, animal physiology, invertebrate neurophysiology, studies of invertebrates, etc.

4. Plant/Soil Science

Study of plant life-agronomy, horticulture, forestry, plant taxonomy, plant physiology, plant genetics, hydroponics, algae, soil horizons, soil samples, etc.

5. Agricultural Engineering and Mechanics

Technology; projects that directly apply scientific principles to manufacturing and practical use -mechanical, chemical, electrical, environmental engineering, etc.

6. Social Systems

The study of human behavior and the interaction of individuals in and to society, including agricultural education, agribusiness economics, agricultural communication, agricultural leadership and other social science applications in agriculture, food and natural resources.

7. All other research projects

FFA AG DISPLAY PROJECT

VIEWABLE SEALED CONTAINER

OR SHADOW BOX

RULES

1. Please label and properly identify all specimens
2. Project must be sturdy enough to handle
3. No larger than 12x15"

DIVISION 451 - SHADOW BOX

CLASS

1. Wool Spinning samples
2. Vet Science - Suture types
3. Blown Egg display
4. Bug Collection
5. Weed Collection
6. Soil Science

FFA ROBOTICS

DIVISION 452 - ROBOTICS

CLASS

1. From Kit
2. Any other Original Design

FFA FOOD SCIENCE

Items must be made as part of an Ag Course Curriculum

DIVISION 453- FOOD SCIENCE

CLASS

- | | |
|------------|-------------------------|
| 1. Cheese | 4. Preserved Meats |
| 2. Butter | 5. Preserved Vegetables |
| 3. Sausage | 6. Preserved Fruits |
| | 7. Any Other |

FFA AG-COMMUNICATIONS

VIDEO

RULES

1. Students entering exhibits in Ag Communications must be regularly enrolled in a high school that is following the California State Plan for vocational agriculture.
2. All entries must start with a video time stamp, either embedded in the video or held up by an exhibitor on a card and must have been made during the calendar year the fair occurs.
3. All entrants must be in official FFA dress uniform for all video submissions.
4. **All entries should be created via YouTube and submitted via email, no later than May 1st. & each chapter must deliver 1 USB with all videos. This will be used for displaying videos in the building.**
5. Presentations and/or speeches may be made available to the public via social networks or digital delivery. All presentations and/or speeches deemed unviewable for the public will not be shown/displayed.
6. Please refer to the divisional rules for specific requirements around questions, video length, etc.
7. Judges will follow all California Agricultural Teachers Association published rules and scoring guidelines on calagteachers.org, although written responses/critiques may not be provided.
8. Video submissions should be recorded with a stationary camera, using an Iphone or other high quality, but basic recording equipment.
9. No graphic enhancements, stoppages or edits should be included in any video entries.
10. Participant(s) should be in the room at the start time of the video. Videos where individuals enter or exit will be disqualified.
11. If help is needed with entries, please contact the Entry Office at 831-385-3243 or email entryoffice@salinasvalleyfair.com

How to create and send your video

Please email the link to your video to:

Livestock@salinasvalleyfair.com

- Log into YouTube using your gmail account info.
- Videos created may be “Unlisted” meaning only individuals with the link to the video may view it.
- Email subject must include “FFA Ag Comm. Video”
- Email Content must include: Exhibitors Name, CLUB, Division #, Class # & the LINK TO YOUR VIDEO!

DIVISION 454 –INDIVIDUAL VIDEO CONTEST CLASS

1. FFA Prepared Public Speaking

* Each speech will be a minimum of six minutes and a maximum of eight minutes. There will be no follow up questions for each speech. Contestants may choose their own subjects for their speeches. Any current subject of agriculture which is of interest to the agricultural sector will be acceptable. A topic which centers on leadership and/or FFA experiences is acceptable. References made to FFA and SOEP experiences, as they pertain to the subject, are encouraged. Participants using a topic on a non-related agriculture subject will be disqualified.

*Students may submit a previously recorded FFA prepared Public Speaking Video from the section speaking contest as long as it follows the above rules for submission.

2. FFA Job Interviews

* Students will receive a list of positions and job interview questions no later than May 1st to create their submissions. For video submissions, students must answer each question from the prepared question list. Videos should not exceed 20 minutes in length. Students must also digitally submit a letter of introduction/cover letter and resume as part of their submission. Letter of introduction/cover letters may be submitted via a downloadable share file (ie Dropbox, Microsoft OneDrive, etc.) or turned in on a USB, USB drives will not be returned.

*Students may submit a previously recorded FFA Job Interview Video from the section speaking contest as long as it follows the above rules for submission.

3. FFA Creed Recitation

a. Students must recite the FFA creed from memory on video. Entries will be creed recitation only, no follow up questions. All videos must include a full body-length view of the participant. Videos must not exceed 5 minutes in length.

*Students may submit a previously recorded FFA Creed Video from the sectional contest as long as it follows the above rules for submission.

**DIVISION 455 – TEAM VIDEO CONTEST
CLASS**

1. Opening/Closing Ceremony

a. Video must include both Opening and Closing Ceremonies. Videos should start with Opening Ceremonies and then transition directly into Closing Ceremonies. Video must show all officers present and participating in ceremonies. Videos should not exceed 20 minutes in length.

*Students may submit a previously recorded FFA Opening and Closing Ceremonies Video from the sectional contest as long as it follows the above rules for submission.

Entry Fee

\$2.00 per entry

Entry Limit

1 entry per class per exhibitor

Premiums- Ribbons Only

DIVISION 456 -FFA VIDEO

DIVISION 457 -WEBSITE

CLASS

1. Chapter

FFA VIDEO & WEBSITE



4-H STILL EXHIBITS

MARGARET NOROIAN, Director

TERI STORELLI – Supervisor

Entries accepted online only until 11:59 pm April 1st

Entries Received at Orradre Bldg...9am - 3pm, Sat, May 11

Exhibits Released.....8am - 4pm, Mon, May 20

EXHIBITORS BRINGING 10 ITEMS OR MORE PLEASE CALL ENTRY OFFICE 385-3538 FOR APPOINTMENT.

Entries not picked up within one week of Fair closing will be disposed of.

Entry Fee- All 4H Divisions

\$2.00 per entry

Premiums -All 4H Divisions

Ribbons Only

DEPARTMENT AWARDS

Outstanding Chapter- \$100

Awarded to the chapter with the highest points in 4-H exhibits

Points calculated using State Rules for Sweepstakes.

PRIMARY MEMBERS

- Enrolled in the 4-H Program.
- Must be 5 years old or in kindergarten by January 1
- Kinder thru 3rd grade
- Limit is **two different items per class**,

- Primary members with rabbit or poultry projects are required to enter a non-livestock “still” entry.

Entry Fee- (Primary Members Only)

No entry fee Division #500

Premiums- (Primary Members Only)

Ribbons Only Division #500

DIVISION 500 – PRIMARY MEMBER CLASS

1. Clothing & Textiles & Quilt
2. Food & Nutrition
3. Home Arts
4. Photography
5. Arts & Craft
6. Any other

4-H CLOTHING AND TEXTILES

RULES

1. All entries must have been made by the exhibitor
2. All entries shall have been completed since the previous year's Fair.
3. Garments must be covered in plastic on wire hangers
4. limit to four entries per class.
5. An entry may consist of an item judged individually or a coordinated outfit.
6. Two and three-piece outfits must be on one hanger

DIVISION 501 – Junior, Age 9-11

DIVISION 502 – Intermediate, Age 12-14

DIVISION 503 – Senior, Age 15 & older

CLASS

1. Single item
2. Needlework – i.e., wearable knit, crochet, embroidery
3. Any other

4-H FOODS AND NUTRITION

RULES

1. All entries in this department must have been prepared by the exhibitor

2. Entries must list the type of foods & made from scratch.
3. No refrigeration available.
4. Crusts must be homemade.
5. **All food to be well wrapped & put on disposable plates.**
6. Pies with homemade filling must be in a foil pan. Glass dishes will not be returned.
7. No hot food
8. Food entries will be judged Saturday, Receiving Day.

DIVISION 504 – Junior, Age 9-11

DIVISION 505 – Intermediate, Age 12-14

DIVISION 506 – Senior, Age 15 & older

Limit 3 different items per class

Breads, Rolls, Cupcakes & Muffins

1/2 loaf + 1 slice or 1/2 dozen well wrapped

CLASS

1. Biscuits
2. Yeast Breads
3. Coffee Cake
4. Quick Breads/Nut Bread
5. Rolls, Yeast
6. Any other Bread/Roll not listed above
7. Cupcakes
8. Muffins

Cakes

1/4 cake + 1 slice well wrapped

9. Chocolate
10. Pound or Bundt
11. Any Other Cake

Candy

1/2 dozen well wrapped

12. English Toffee
13. Fudge Light or Dark
14. Any Other Candy

Cookies

1/2 dozen well wrapped

15. Bar Cookies
16. Brownies
17. Chocolate Chip Cookies
18. Drop Cookies
19. Sugar Cookie
20. Oatmeal Cookies
21. Peanut Butter
22. Snickerdoodles
23. Any Other Cookies

Decorated Items

Styrofoam may be used

Limit 1 decorated item per class.

24. Decorated Cake
25. Decorated Cookies
26. Cake Pops

Pies

Homemade filling & Crust required

8" or 9" pie in foil pan well wrapped

27. One Crust – specify type – homemade filling required
28. Two Crust – specify type – homemade filling require
29. Cobbler any type, specify

4-H FOOD PRESERVATION

RULES

1. All entries in this department must have been prepared by the exhibitor within the last 12 months
2. **Jar labels should list the type of product and process**
 - Low acid foods must be canned under pressure.
 - Dried products should be wrapped in clear plastic or sealed jars.
 - No paraffin seals.
 - Must be in sealed standard jars with new rings
4. All food preservation, packaging and labeling must be done in accordance with directions and recipes in publications listed in the 4-H Food Preservation Project Outline.
5. **Limit:** 3 entries per class.
6. Each entry consists of **TWO** 1/2-pint jars
 - **JAM**: contains crushed or chopped fruit
 - **JELLY**: Bright, not faded or discolored, free from sediment, cloudiness, crystals or foreign particles.
 - **PICKLED**: Any fruit or vegetable with a vinegar solution

DIVISION 507 – Junior, Age 9 - 11

DIVISION 508 – Intermediate, Age 12-14

DIVISION 509 – Senior- Age 15 & older

CLASS

1. Canned Fruit, Vegetable i.e., Applesauce
2. Dried Fruit Leather/Roll
3. Dried Fruit or Vegetable
4. Dried Jerky
5. Jam-Strawberry or any other (specify)
6. Jelly-Grape or any other (specify)
7. Pickled Fruit, Vegetables, Relish or Salsa
8. Preserves or marmalade
9. Vinegar
10. Any Other

4-H HOME ARTS

RULES

1. All entries in this department must have been made by the exhibitor
2. All pictures and plaques must be equipped for hanging
3. **Limit:** 10 different exhibits per class

DIVISION 510 – Junior, Age 9 - 11

DIVISION 511 – Intermediate, Age 12-14

DIVISION 512 – Senior, Age 15 & older

CLASS

1. Crochet Item – blanket, afghan, pillow etc.
2. Cross Stitch item - not wearable item
3. Embroidery or Needlepoint – not wearable item
4. Items made with rope
5. Knitted items
6. Holiday/Seasonal Item
7. Kitchen Item – pot holder etc.
8. Pillows
9. Table Setting - must provide your own card table
10. No Sew Fleece Blanket- tied
11. Any Other

QUILTS & QUILTING

4" wide sleeves required for items to be hung.

DIVISION 513 – Junior, Age 9 - 11

DIVISION 514 – Intermediate, Age 12-14

DIVISION 515 – Senior, Age 15 & older

CLASS

1. Any Hand Quilt
2. Any Machine Quilt
3. Wall Hanging
4. Quilt Square
5. Quilt – Original Design
6. Quilted item other than quilt
7. Quilted accessory
8. Group Quilt Project
9. Any other

4-H TRASH TO TREASURES

REPURPOSED ITEMS

DIVISION 520 – Junior, Age 9 - 11

DIVISION 521 – Intermediate, Age 12-14

DIVISION 522 – Senior, Age 15 & older

CLASS

- | | |
|----------|-----------|
| 1. Wood | 4. Rubber |
| 2. Glass | 5. Metal |

3. Cloth

6. Any other

4-H WOODWORKING

Limit 3 different entries per class

RULES

1. All entries must have been made by the exhibitor
2. All articles must have been made within the last 12 months

DIVISION 527 – Junior, Age 9 - 11

DIVISION 528 – Intermediate, Age 12-14

DIVISION 529 – Senior, Age 15 & older

CLASS

- | | |
|-------------------------|------------------------|
| 1. Article of Furniture | 5. Cutting Board |
| 2. Show Box | 6. Birdhouse |
| 3. Sign | 7. Foot Stool |
| 4. Gun Rack | 8. Any Other – Specify |

4-H ARTS AND CRAFTS

RULES

1. All entries must have been made by the exhibitor
2. All entries must have been made within the last 12 months.
3. If a member is entering an item that is pre-cut or pre-stamped, the member must attach a note stating which portion of the item they completed. Items will be judged on the neatness and the artistry of the exhibit.

LEATHER WORK

DIVISION 530 – Junior, Age 9 - 11

DIVISION 531 – Intermediate, Age 12-14

DIVISION 532 – Senior, Age 15 & older

CLASS

1. Belt, Billfold, Coin Purse, Key Case or Wallet
2. Any Other project not listed above - specify

4-H SCRAPBOOKS

DIVISION 535 – Junior, Age 9 - 11

DIVISION 536 – Intermediate, Age 12-14

DIVISION 537 – Senior, Age 15 & older

CLASS

1. Club- Scrapbook
2. Individual- Scrapbook

4-H CRAFTS

Limit 3 different entries per class

DIVISION 540 – Junior, Age 9 - 11

DIVISION 541 – Intermediate, Age 12-14

DIVISION 542 – Senior, Age 15 & older

CLASS

1. Candle Making
2. Duct tape item
3. Mod podge flower pot
4. Holiday/Seasonal Decorations
5. Jewelry, list each item
6. Memory Book – Any Occasion
7. Mosaic Art
8. String Art
9. Stepping Stone-Uniquely Decorated
10. Jewelry Box
11. Crayon Melted Art
12. Scrapbooking Page
13. Halloween Craft
14. Basketry, Coiling and Twining
15. Hand Made Card
16. Antler Art
17. Ceramics
18. Any Other item not listed

4-H ART

Limit 3 entries per class

DIVISION 543 – Junior, Age 9 - 11

DIVISION 544 – Intermediate, Age 12-14

DIVISION 545 – Senior, Age 15 & older

CLASS

1. Drawings Colored Pencils
2. Drawings Black & White: Pencil, Markers, Charcoal, Pen & Ink, Crayon
3. Painting: Acrylic, Oil
4. Painting: Watercolor
5. Chalk Art
6. Any other artwork not listed

4-H PHOTOGRAPHY

RULES

1. Label with name, division and class on the back of photo.
2. Pictures must have been taken within last 12 months
3. Photo should be display ready & able to hang

4. All prints should be matted on poster board or mat board
5. **Print to be no larger than 16" x 20" or smaller than 5" x 7". This will be strictly enforced.**
6. Photos may not be framed or matted on foam board.
Matting must be secured to picture

DIVISION 550 – Junior, Age 9 - 11

DIVISION 551 – Intermediate, Age 12-14

DIVISION 552 – Senior, Age 15 & older

COLOR OR DIGITAL PRINTS

Limit 2 different entries per class.

CLASS

1. Action
2. Agriculture Scenes
3. Animals & Insects
4. Children
5. Flowers
6. Landscape
7. Macro - Close up or magnified
8. Reflections - Mirrored images
9. Fair Theme
10. Still Life
11. Sunrise/Sunset
12. Travel
13. Night Photography
14. Any other

4-H BLACK & WHITE DIGITAL

Limit 2 entries per class.

CLASS

15. Action
16. Agriculture Scenes
17. Animals & Insects
18. Children
19. Flowers
20. Landscape
21. Macro - Close up or magnified
22. Reflections - Mirrored images
23. Fair Theme
24. Still Life
25. Sunrise/Sunset
26. Travel
27. Night Photography
28. Any other

4-H AG MECHANICS

BASIC WELDING

DIVISION 557 – Junior, Age 9 - 11

DIVISION 558 – Intermediate, Age 12-14

DIVISION 559 – Senior, Age 15 & older

Acetylene Welding

1/8" steel, 4" long

CLASS

- | | |
|----------------|---------------------------|
| 1. Butt Weld | 4. Lap Weld |
| 2. Corner Weld | 5. Pipe to Flat |
| 3. Fillet Weld | 6. Stinger beads with rod |

Arc (Electric) Welding

1/4" steel, 6" long

- | | |
|----------------|------------------|
| 7. Bead pad | 10. Fillet Weld |
| 8. Butt Weld | 11. Lap Weld |
| 9. Corner Weld | 12. Pipe to Flat |

MIG Welding

3/16" or 1/4" steel, 6" long

- | | |
|-------------------|---------------------|
| 13. MIG Weld | 15. MIG Corner Weld |
| 14. MIG Butt Weld | 16. MIG Fillet Weld |

TIG Welding

- | | |
|-------------------|---------------------|
| 17. TIG Weld | 19. TIG Corner Weld |
| 18. TIG Butt Weld | 20. TIG Fillet Weld |

4-H Ag Mech Projects

Masonry Projects

CLASS

21. Small Project
22. Medium Project
23. Large Project

Cold Metal Projects

CLASS

24. Small Project
25. Medium Project
26. Large Project

Electrical Projects

CLASS

27. Small Project
28. Medium Project
29. Large Project

Plumbing Projects

CLASS

30. Small Project
31. Medium Project
32. Large Project

Rope Work Projects

CLASS

33. Small Project
34. Medium Project
35. Large Project

MISCELLANEOUS PROJECTS

Limit 3 different entries per class

RULES

1. These projects should be a learning experience for you and educational for fair goers.
2. Must have a description.
3. Must be made by exhibitor within the last 12 months
4. **No Posters**

DIVISION 560 – Junior, Age 9 - 11

DIVISION 561 – Intermediate, Age 12-14

DIVISION 562 – Senior, Age 15 & older

CLASS

1. Aerospace, Rocketry and Aviation
2. Camping & Outdoor Adventure- fishing, hiking etc.
3. Community Pride
4. Shooting Sports
5. Archery (include quiver stand)
6. Citizenship
7. Leadership
8. Entomology
9. Electricity
10. Wildlife
11. Vet Science
12. Resource Science
13. Any other

4-H VIRTUAL PRESENTATIONS

Limit 1 entry per exhibitor

RULES

1. Individual entries accepted, no group skits or presentations.
2. Traditional 4-H Rubrics will be used in judging for each class offered.
3. Participants are required to submit their virtual presentation no later than the April 1st deadline. No late entries will be

accepted.

4. This is not a 4-H competition, it is hosted and judged by the Salinas Valley Fair
5. Each participant is required to wear their official 4-H uniform and should be visible at some point during their presentation.
6. Enrollment in a public speaking project is not required. If not a member of a public speaking project, please present on a topic regarding a project in which the participant is currently enrolled.
7. **All entries should be created via YouTube and submitted via email, no later than April 1st. & each chapter must submit 1 USB with all presentations for their club. This USB will be used to display videos in the 4H Building.**

Please email the link to your video to:

Livestock@salinasvalleyfair.com

- Log into YouTube using your gmail account info.
- Videos created may be “Unlisted” meaning only individuals with the link to the video may view it.
- **Email subject** must include “4-H Virtual Presentation”
- **Email Content** must include: Exhibitors name, club, division #, class # & the LINK TO YOUR VIDEO!

DIVISION 565 – Junior, Age 9 - 11

DIVISION 566 – Intermediate, Age 12-14

DIVISION 567 – Senior, Age 15 & older

CLASS

1. Demonstration/Illustrated Talk
2. Science or Engineering Presentation
3. Educational Display Talk
4. Persuasive Prepared Speech
5. Informative Prepared Speech

LIVESTOCK **JUDGING CONTEST**

John Orradre, Director
Cal Poly, Clerks

Entry deadline -----Pre-register at the Livestock Office by 5p.m. Thursday, May 16
Contest Check-in-----8 a.m. Sunday, May 19

Awards Given

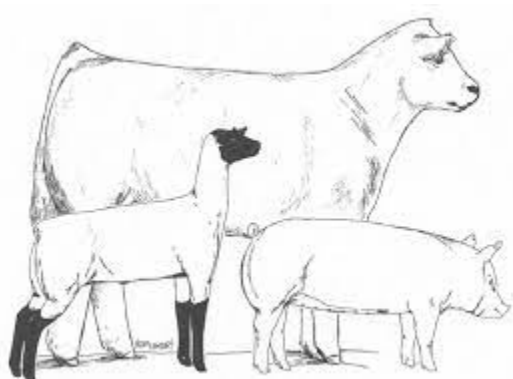
9-14 Years old - High Team & High Individual
15-19 Years old - High Team & High Individual
2-5 Place Ribbons

RULES

1. Sign Up in the Livestock Office no later than 5p.m. Thursday, May 16th.
2. Line up at 8 a.m. at the Auction Ring Bleachers.
3. A team consists of three (3) members from the same age category.

YOU MUST NAME YOUR TEAM

4. Enter as an individual or a team, please name your team.
5. Contestants will judge at least six classes consisting of; 2 beef, 2 sheep and 2 swine. Market and/or breeding classes.
6. Contestants will be allowed 10 minutes for placing each class.
7. Awards assembly will be held in the Auction Arena, following both Round Robin and Lunch. Exact time to be announced, approximately 1:00p.m.



JUDGING CONTESTS

Vegetable Judging - Matthew Cauley, Director
Farm Power Judging - Jessica Handley, Supervisor
Floral Judging - Kim Schmidt, Supervisor

Entry deadline -----Pre-register at the Livestock Office by 5:00 p.m. Thursday, May 16
Contest Check-in -----10:30 a.m., Sunday, May 19, Orradre Building
Awards Ceremony -----Approximately 1:00, JLA Ring

Awards Given

High Individual for Each Contest
1-5 Place Ribbons

RULES

1. Pre-register at the Livestock Office by 5p.m. Thursday, May 16.
2. Judging time, 11:00 am. at the Orradre Building
3. The current CATA Curricular Code for Vegetable Crop Judging will serve as the official study guide
4. Enter as an individual or a team, please name your team.
5. The 3 highest contestants' scores from each club/chapter team will be used to calculate team.
6. Contestants will judge specimens for identification: Edible vegetable portions, weeds/flowers, insects, diseases, seeds or machine parts for example.
7. Ties will be broken by tie breakers in the I.D. section. This will not count against the original score.
8. Awards assembly will be held in the Auction Arena, following both Round Robin and Lunch. Exact time to be announced, approximately 1:00 p.m.

4-H Passport Contest

Teri Storelli, Supervisor

Passport is not included in the Overall Exhibitor Award

Entry deadline -----Pre-register at the Livestock Office by 5p.m. Thursday, May 16

Contest Check-in -----10 a.m., Sunday, May 19, Orradre Building

RULES

1. Open to registered 4H Primary & 4H Junior Members only (5-11 years old).
2. Contest time, 10-11:30 am. Check in at the Orradre Building.
3. Participants will receive a scavenger type Passport with items to find all over the fairgrounds
4. Passports are due at 11:30.
5. All correct passports will enter a raffle. Winners will be announced at the awards assembly for all Judging Contests, approximately 1:00.