



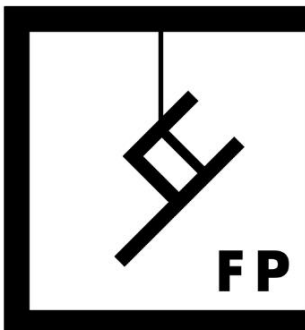
# 2025

## Open Class Rules & Premium Book

### Exhibit Submission Day

Wednesday July 30th, 2025

12PM until 7PM SHARP!



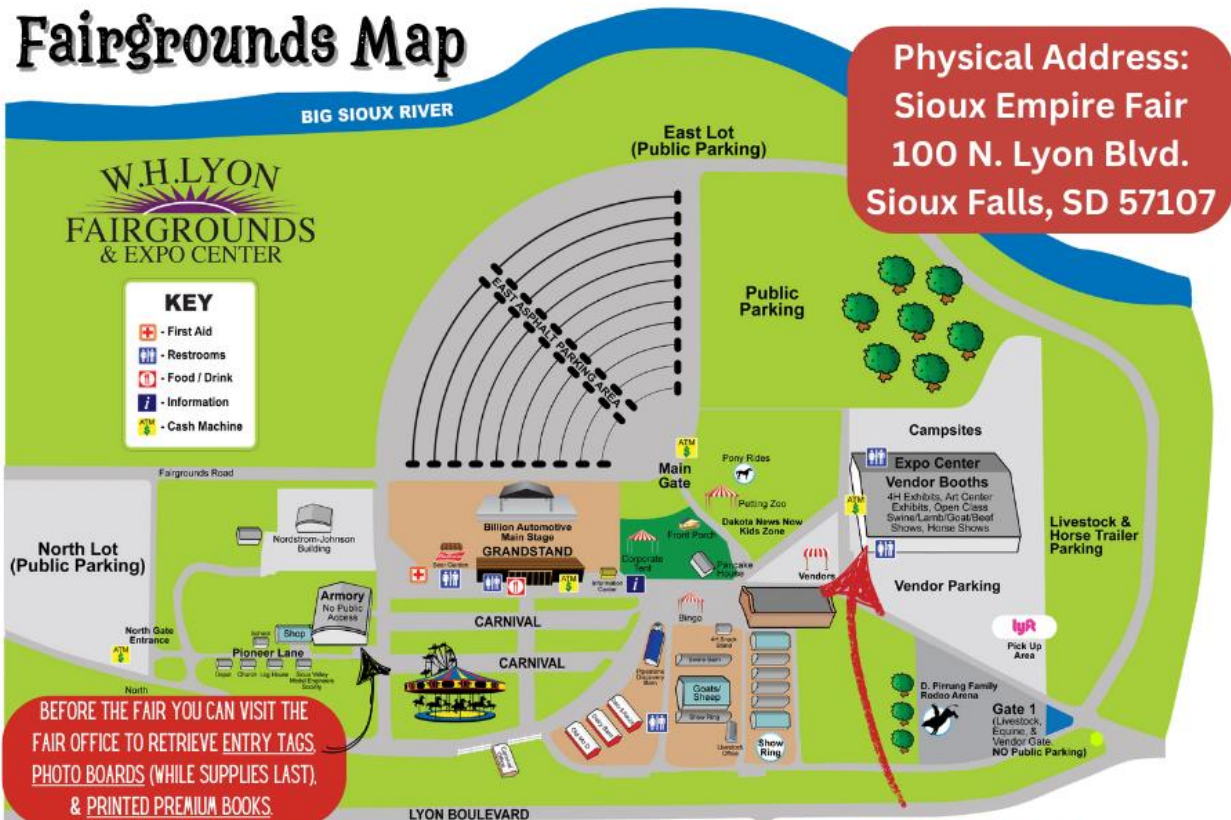
Thank you to  
**Fresh Produce**  
for sponsoring the  
Arts Center  
Ribbons

Visit the Arts Center webpage  
by scanning the QR Code.



[www.siouxempirefair.com/p/siouxempirefair/arts-center](http://www.siouxempirefair.com/p/siouxempirefair/arts-center)

# Fairgrounds Map



## FAIR OFFICE

FAIR OFFICE HOURS  
MON.-THURS. 9AM-4PM  
FRIDAY 9AM-2PM

## ARTS CENTER

EXHIBIT DROP OFF 7/30/25 12PM-7PM SHARP!  
EXHIBIT DISPLAY & CONTEST CORNER OPEN 8/2-8/9 (10AM-8PM)  
EXHIBIT PICKUP 8/10/25 10AM-4PM SHARP!

### Covid-19 Precaution

Sioux Empire Fair Association follows state and local guidelines

In this era of uncertainty, the Sioux Empire Fair Arts Center encourages all of our exhibitors and guests to practice good hygiene practices:

1. If you are sick, stay home.
2. Wash your hands often, for at least 20 seconds, or use hand sanitizer when washing is not available.
3. Avoid touching your face.
4. Cover coughs and sneezes.
5. Refrain from touching exhibits or surfaces as much as possible.
6. The health and safety of our guests, participants and community is our priority.

An inherent risk of exposure to COVID-19 exists in any public place, and any interaction in the general public poses an elevated risk of being exposed to COVID-19. By visiting the W.H. Lyon Fairgrounds, you voluntarily assume all risks related to exposure to COVID-19 and we cannot guarantee that you will not be exposed during your visit.

### **Premium Book Page Index**

Arts Center Rules and Regulations .....	4
Ribbon Announcement .....	7

#### **Adult Division Lots**

Class 1 Quilts .....	8
Class 2 Needlework .....	10
Class 3 Clothing & Constructed Articles .....	12
Class 4 Crafts & Hobbies .....	14
Class 5 Photography .....	17
Class 6 Artwork .....	19
Class 7 Antiques .....	19
Class 8 Baked Goods .....	21
Class 9 Food Preservation .....	24
Class 10 Floriculture for Amateur .....	26
Class 11 Other Plants, Vines, Containers .....	29
Class 12 Floral Arrangements .....	31
Class 13 Vegetables .....	32
Class 14 Fruits .....	34
Class 15 Herbs .....	34

#### **Junior Division Lots**

Class 16 Junior Crafts & Hobbies .....	35
Class 17 Junior Needlework .....	37
Class 18 Junior Sewing Bazaar .....	38
Class 19 Junior Artwork .....	39
Class 20 Junior Photography .....	40
Class 21 Junior Baked Goods .....	41
Class 22 Junior Food Preservation .....	43
Class 23 Junior Floriculture .....	44
Class 24 Junior Horticulture .....	45

#### **Forms & Other Notes**

Special Award Sponsor Recognition .....	48
Submission Form .....	49
Entry Tag Instructions .....	50
South Dakota State Fair – Best of Show Details .....	51
Volunteer Form .....	52
Contest Forms, Event Flyers & More .....	53 - 61

## **Every year we update our book. Please Read Thoroughly!**

Rules, regulations, dates, contests and anything listed herein may be updated without notice at any time at the sole discretion of the Sioux Empire Fair Association Inc. For up to date information, please check the fair website at [www.siouxempirefair.com](http://www.siouxempirefair.com) and the Arts Center Facebook Page at [www.facebook.com/sefartscenter](http://www.facebook.com/sefartscenter).

<b>SUBMISSION DAY</b>	<u>Wednesday</u>	<u>July 30<sup>th</sup>, 2025</u>	<u>12PM - 7PM SHARP!!</u>
<b>RELEASE DAY</b>	<u>Sunday</u>	<u>August 10<sup>th</sup>, 2025</u>	<u>10AM - 4PM SHARP!!</u>

**AMATEUR** refers to a non-professional individual, or level of work.

**EXHIBIT/S** refers to open class entries.

**EXHIBITOR/S** refers to participants of the open class.

**SUBMISSION** refers to the process of entering exhibits.

**EXHIBITOR NUMBER** refers to the identifying number assigned to each exhibitor.

**ENTRY TAG** refers to the exhibit identifier.

**JUNIOR** refers to exhibitors 18 years old and younger.

**ADULT** refers to exhibitors between 19-64 years of age.

**SENIOR** refers to exhibitors 65 years or better (older). Adults & Seniors share a division.

1. Participation is **FREE** and **OPEN** to the amateur level of the public.

2. **EXHIBITS** - Exhibits **MUST** be the work of the exhibitor, **MUST NOT be older than 2 years**, and **MUST** not have been submitted in a previous Sioux Empire Fair. Exhibits should be unworn and unsoiled. Judges have full discretion to disqualify exhibits based on the rules of the Premium Book.

3. **EXHIBITOR NUMBER** - Each exhibitor must have an exhibitor number. If you do not have an exhibitor number from 2020 - 2024 to reuse, one will be issued to you. To receive an exhibitor number before submission day, you can email your contact info (full name, mailing address, primary email address, primary phone number, and age if under 19 or list Senior if over 64) to [sef.artscenter@yahoo.com](mailto:sef.artscenter@yahoo.com) and note "New Exhibitor Number" in the subject line. If you cannot email us, please call 605-299-9744. If need be, we can also issue exhibitor numbers at time of submission.

4. **ENTRY TAGS** – If possible, prior to Submission Day, pick up entry tags from the fair office (M-Th 9AM-4PM or Friday 9AM-2PM). Exhibitors must complete an entry tag for each exhibit and securely attach it to their exhibit. It is preferable to have them done before coming, but they may be filled out on submission day as well. Turn to page 50 for how to fill out the entry tag.

5. Exhibitors submitting in the Junior Division **MUST** indicate their age on the submission form AND in the upper righthand corner of the Entry Tag. If you are a **Senior** (65+), please write an "S" in the upper righthand corner of the Entry Tag. All exhibitors aged 19 to 64 should write an



“A” in that corner. These Entry Tag indicators help the judges determine which exhibits may move on to the South Dakota State Fair.

**SUBMISSION** - Submission Day is **Wed. 7/30<sup>th</sup>** from **12-7PM SHARP!**

**6.** Exhibits are to be **submitted in-person**, in the Expo’s North Room (see map on pg. 2), with **completed entry tag/s and a properly completed and signed submission form/s.**

**7. No submission process may start after 7PM, and any submission in progress will be cut off at 7:30PM SHARP.** We greatly welcome large exhibit totals, and ask that you arrive early with your exhibits, entry tags, and forms in order. We want to make sure we can accept all the amazing exhibits in time, and in an orderly fashion!

**8.** Exhibitors may submit **up to 2 exhibits per lot** and participate in as many lots as desired.  
\*Note: If submitting 2 exhibits in one Baked Goods lot, they should be made with different recipes. **Recipes required.**

**9.** If submitting a chilled Baked Goods exhibit, as soon as you arrive, ask any Arts Center staff member to place your exhibit in our cooler with your completed Entry Tag. When it is your turn to process your submission/s, please remind us of this exhibit so we can properly process it.

**10.** Every precaution will be taken to ensure the safety of every exhibit submitted in competition, but the fair management cannot be held responsible for loss or damage that may occur. **Upon submission you hold the Sioux Empire Fair Association Inc., staff, & volunteers harmless.**  
**We value what the exhibits mean to you, so please help us by ensuring your exhibits are sturdy enough to be moved. Wall art MUST be structurally sound and capable of enduring 10 days of display, hung by the appropriately strong picture wire you provide.**

**11.** All floriculture and horticulture exhibits MUST be grown by the exhibitor. Decayed or injured specimens should not be submitted.

**12.** No artificial flowers are permitted in the floriculture class. Only natural foliage which grows on the stem is to be shown, including stems grown naturally without foliage.

**13.** Please be sure to have flowers conditioned. (Cut stems, in warm water, no leaves in water.) Wedging may be used. (Clear plastic wrap around the stem to anchor it.)

**14.** All potted plants MUST be submitted with a saucer.

**15.** All horticulture exhibits should come on a white paper or Styrofoam plate. On the Entry Tag, write the variety of plant on the line just above the half circle slit.

For how to properly exhibit horticulture exhibits, view the publication, “Preparing Horticulture Exhibits” from SDSU Extension, online at

<https://extension.sdstate.edu/sites/default/files/2019-06/P-00120.pdf>. ➡



## JUDGING

**16.** The decisions of the judges will be final. Awards will not be issued for unworthy exhibits, even if they're the only exhibits in the class. Exhibits not following the rules may be disqualified.

**17.** All creditable exhibits will be divided into three groups – blue, red, and white. The award premiums will be issued for exhibits denoted in the following manner: \$2 for blue, \$1 for red, no premium for white. The “Best in Lot” winner will be chosen from the blue group in each lot and denoted with a Triumph of Talent Ribbon, if the judge warrants the status.

**RELEASE DAY - Sunday, Aug. 10<sup>th</sup> from 10AM until 4PM SHARP.**

**18.** Exhibits, Premiums, and Special Awards will be released from the NORTHWEST entrance of the Arts Center at this time. (Please have your ID handy if needed.) **Exhibits not picked up during this time (or have no prior arrangements made for them) may be discarded and the exhibitor will forfeit their premium money and any Special Award/s.** We do not want this to happen!! So, if you are unable to pick up your property at this time, please make arrangements with the Arts Center Coordinator ASAP to have someone pick it up for you or arrange to pick it up from the fair office between August 18-22, 2025 during office hours.

**19.** To ensure order and the safety of the exhibits on Release Day, exhibitors are **prohibited** from entering the exhibit area to remove exhibits until waited on by the Arts Center staff. If an exhibit is removed without proper checkout with our staff, no premium payment will be awarded.

**\*\*Please note:** There is one submission form to be used for all Arts, Floriculture and Horticulture submissions. This form can be duplicated if you are submitting more than 20 exhibits. Turn to page 49 for the Submission Form.

**Arts Center Coordinator:**

**[sf.artscenter@yahoo.com](mailto:sf.artscenter@yahoo.com)** or 605-299-9744

**If you love the fair and would like to take a bigger part in it, you can fill out a Volunteer's Form (found on page 52) and come join our incredibly awesome Arts Center team. There is a limited number of volunteer slots, so please send in your form to the Fair Office a.s.a.p. or email it to the coordinator. Once your form is accepted, we will notify you with a great big THANK YOU and further info. We look forward to the chance to work with you.**

**Fair Office Address:  
W.H. Lyon Fairgrounds  
100 N. Lyon Blvd.  
Sioux Falls, SD 57107  
605-367-7178  
[www.siouxempirefair.com](http://www.siouxempirefair.com)  
M-Th 9AM-4PM  
Friday 9AM-2PM**



## FRESH PRODUCE



*is continuing their generous support of the Arts Center by sponsoring the exhibit ribbons again this year!*

*Visit their downtown gallery and discover how they can bring a unique advertising vision to life for you.*



*With so much creative talent in our community, we award ribbons by category instead of to just a few individuals. Here's what the colors mean:*

### ALL EXHIBITS

*White indicates work with honors*

*Red means excellent work*

*Blue means work of the highest quality*

### SPECIAL EXHIBITS

*Yellow 'Triumph of Talent' ribbons indicate a Best in Lot exhibit*

*Purple rosettes indicate Best of Show and are given alongside special awards*



Each team member from Fresh Produce's advertising agency will be awarding one Delight and one Danger ribbon to exhibits that stand out as something special to them.

**Exhibits that receive a DELIGHT ribbon elicited a high degree of joy.**

**Exhibits that receive a DANGER ribbon required a unique approach.**



**Fresh Produce  
400 N. Main Ave. Suite 100  
Sioux Falls, SD 57104  
[www.pickfresh.com](http://www.pickfresh.com)**



[www.pickfresh.com](http://www.pickfresh.com)

# ADULT DIVISION

## !!ATTENTION!!

The Sioux Empire Fair's Adult division includes all exhibitors from ages 19 and up. However, the South Dakota State Fair splits this age group into ages 19-64 for their Adult division and ages 65+ for their Senior division. This is why the "A" and "S" in the upper righthand corner of your Entry Tags is important for our judges.



### Class 1 QUILTS



#### Score Card

<b>Pattern</b> (Difficulty).....	1 - 8
<b>Fabric Selection</b> (Whether the fabric complements with each other) .....	1 - 5
<b>Piecing</b> (How well the general piecing of the quilt is done. Does the quilt have all points and do the seams match up. Is the quilt square and without waves on borders.) .....	1 - 8
<b>Quilting</b> (Make sure that if the quilt is tied there are enough ties (one every 5-6 inches). Threads used to tie are trimmed and have a pleasing appearance. When quilting, make sure the quilting fits the pattern and is not over or under quilted. Make sure the thread also is pleasing in appearance.) .....	1 - 5
<b>Binding</b> (Does the batting go all the way out to the edge and fill the binding area. Is the binding sewn on from the front and hand stitched down with hidden stitches and matching thread. Are the corners done well. If the binding is sewn down on the top, with a decorated stitch, does it have a pleasing appearance.).....	1 - 5
<b>Overall Appearance</b> (Are all the threads trimmed & does everything come together to make an enjoyable project) .....	1 - 15

*All quilting exhibits **MUST** be completed within the last two years,  
and never have been entered in the Sioux Empire Fair.*

*Quilting exhibits **MUST** also not be worn, or soiled, and they should be free of odor & pet hair.*

*Please bring quilts in plastic bags. Quilts will be removed from bags to be judged and  
hung up for display with plastic draped over them.*

***Maximum 2 exhibits per lot.** Refer to pages 4-6 for full submission information.*

#### **Bed Quilts Made & Quilted by Exhibitor (including lap size)**

Lot 100 Hand pieced, machine or hand quilted

Lot 101 Hand pieced, long arm quilted

Lot 102 Hand appliqued, hand quilted

Lot 103 Hand appliqued, machine quilted



Lot 104 Machine pieced, machine or hand quilted  
Lot 105 Machine pieced, long arm quilted  
Lot 106 Machine appliqued, hand or machine quilted  
Lot 107 Machine appliqued, long arm quilted  
Lot 108 Embroidered, hand quilted  
Lot 109 Embroidered, machine or long arm quilted

**Bed Quilts Made by Exhibitor & Quilted by Someone Else (including lap size)**

Lot 110 Hand pieced, long arm quilted  
Lot 111 Hand appliqued, long arm quilted  
Lot 112 Machine pieced, long arm quilted  
Lot 113 Machine appliqued, long arm quilted  
Lot 114 Embroidered, long arm quilted

**Wall Quilts**

Lot 115 Pieced, hand, machine or long arm quilted by exhibitor  
Lot 116 Appliqued, hand, machine or long arm quilted by exhibitor  
Lot 117 Appliqued by exhibitor, quilted by someone else  
Lot 118 Pieced by exhibitor, quilted by someone else

**Applique Focused Quilts** – Applique is the primary feature

Lot 119 Machine block assembly, needle turn by hand applique  
Lot 120 Machine block assembly, machine applique

**Baby Quilts**

Lot 122 Pieced or appliqued, hand, machine or long arm quilted by exhibitor  
Lot 123 Pieced or appliqued, quilted by someone else

**Other Quilted Items**

Lot 125 Quilted garment, any type  
Lot 126 Table runner, placemats (2) or tree skirt  
Lot 127 Purse or electronic cover  
Lot 128 Beginner quilt (quilter with less than 3 years of experience)  
Lot 129 Group quilt (quilt made by a group)  
Lot 130 Any other quilt not mentioned above



**Best of Show Rosette and Special Award**

Always Your Design  
[www.facebook.com/alwaysyourdesign](http://www.facebook.com/alwaysyourdesign)  
335 E. 4th St., Dell Rapids, SD 57022  
605-428-4545  
will award the Outstanding Exhibit in  
(Quilts - Adult) a **\$100 Gift Card.**

facebook.com/always  
yourdesign



# Class 2

---

## NEEDLEWORK

### Score Card

Workmanship.....	40%
Suitability of article to purpose.....	20%
Beauty & originality of design.....	20%
Harmony of color & material.....	20%
Total	100%

*Exhibits that are to be hung, should be submitted on hangers with dry-cleaning type garment bags. Remember exhibits MUST have been made 100% by the exhibitor within the last 2 years. Maximum 2 exhibits per lot. Refer to pages 4-6 for full submission information.*

### ----- FINE NEEDLEWORK Section 1 -----

#### Needlepoint

Lot 200 Any article

#### Counted Cross Stitch

Lot 205 Small pictures (smaller than 9"x12")

Lot 206 Large pictures (larger than 9"x12")

Lot 207 Ornaments

Lot 208 Any other counted cross stitch not mentioned above



#### Embroidery or Applique

Lot 210 Any hand embroidery or applique article

Lot 211 Any machine embroidery/computerized hoop machine embroidery article

Lot 212 Any wool applique up to 24" x 24"

#### Miscellaneous Needlework

Lot 220 Needlepoint, plastic mesh

Lot 221 Weaving, any article

Lot 222 Rugs

Lot 223 Doily

Lot 224 Potholders, made of cloth (2)

Lot 225 Coasters, set of 4

Lot 226 Pillowcase

Lot 227 Tatting

Lot 228 Hardanger

Lot 229 Any other needlework not mentioned above

### ARTS CENTER



[siouxempirefair.com/p/sioux-empirefair/arts-center](http://siouxempirefair.com/p/sioux-empirefair/arts-center)

The Fine Needlework (Adult) sponsor for the Best of Show award is in the final stages of confirmation. We look forward to announcing their support soon!

For the sponsorship updates please watch our webpage and Facebook page by scanning the QR Codes or visiting the provided links.



[www.facebook.com/sefartscenter](http://www.facebook.com/sefartscenter)

## ----- CROCHET & KNITTING Section 2 -----

### Crocheting

Lot 240 Sweater

Lot 241 Shawl, scarf

Lot 242 Slippers, socks

Lot 243 Doily

Lot 244 Potholders (2) (not acrylic or rayon)

Lot 245 Tablecloth (all crochet)

Lot 246 Crochet trim, any article

Lot 247 Pillowcase (pillow inside)

Lot 248 Doll garment

Lot 249 Hat

Lot 250 Wall hangings

Lot 251 Infant booties, cap or mittens

Lot 252 Bib

Lot 253 Crib quilt

Lot 254 Infant dress or infant top and bottom

Lot 255 Afghan of any size

Lot 256 Plushies of any size

Lot 257 Any other crocheted item not mentioned above



### Knitting

Lot 260 Sweater

Lot 261 Shawl, scarf

Lot 262 Slippers, socks

Lot 263 Potholders (2) (not acrylic or rayon)

Lot 264 Mittens

Lot 265 Doll garment

- Lot 266 Hat
- Lot 267 Infant sweater
- Lot 268 Infant booties, cap or mittens
- Lot 269 Bib
- Lot 270 Crib quilt
- Lot 271 Infant dress or infant top and bottom
- Lot 272 Afghan of any size
- Lot 273 Plushie of any size
- Lot 274 Any other knitted item not mentioned above



**Best of Show Rosette and Special Award**  
 Prairie Road Yarn • [www.prairieroadyarn.com](http://www.prairieroadyarn.com)  
 3101 W. 41st St., Suite 115, Sioux Falls, SD 57105  
 605-271-1577 • hello@prairieroadyarn.com  
 will award the Outstanding Exhibit in  
 (Crochet & Knitting - Adult) a **\$75 gift certificate.**

prairieroadyarn.com



## Class 3

### CLOTHING & CONSTRUCTED ARTICLES

#### Score Card

Design & color.....	20%
Material, including trimming.....	15%
Workmanship.....	35%
General Appearance.....	30%
Total 100%	

*Exhibits that are to be hung should be submitted on hangers with dry-cleaning type garment bags. Remember exhibits MUST have been made 100% by the exhibitor within the last 2 years. **Maximum 2 exhibits per lot.** Refer to pages 4-6 for full submission information.*



**\*\*NEW Hand-Sewn Repair lot available.\*\*** The exhibit can be a store-bought garment or item, but the repair must be hand-mended. Pictures of the before damage are required and a short description of the damage and how you tackled the repair is highly recommended.



### **Adult Garments**

Lot 300 Adult apron

Lot 301 Men's or Women's formal wear/dress

Lot 302 Men's or Women's tops (coat, blouse, blazer, button shirt, sweatshirt, T-shirt)

Lot 303 Men's or Women's bottoms (skirt, slacks, shorts)

Lot 304 Suit or pantsuit

Lot 305 Sleepwear or robe

Lot 306 Any other article not mentioned above

### **Children's Garments**

Lot 310 Child's apron

Lot 311 Boys' formal wear or Girls' dress

Lot 312 Boys' or Girls' tops (coat, blouse, button shirt, T-shirt, sweatshirt)

Lot 313 Boys' or Girls' bottoms (skirt, slacks, shorts)

Lot 314 Child's sleepwear

Lot 315 Any other article not mentioned above

### **Toys**

Lot 320 Doll clothes, not more than 6

Lot 321 Stuffed animal

Lot 322 Toy, any kind

Lot 323 Any other sewn toy not mentioned above

### **Miscellaneous**

Lot 325 Purse or tote

Lot 326 Decorative pillow

Lot 327 Banner or flag

Lot 328 Recycled article (include before photo if possible)

Lot 329 Pillowcase

Lot 330 Home accessory (i.e.: curtains, appliance covers, etc.)

Lot 331 Placemat (set of 2), Potholders (set of 2), Coasters (set of 4)

Lot 332 Any other sewn article not mentioned above

### **Hand-Mended**

Lot 340 Hand-Sewn Repair (Picture/s of the before damage required. Description note optional.)



#### **Best of Show Rosette and Special Award**

Fonder Sewing Machine Co. [www.fondersewing.com](http://www.fondersewing.com)

2130 W. 41st St., Sioux Falls, SD 57105

605-332-3821

will award the Outstanding Exhibit in

(Clothing & Constructed Articles - Adult) a **\$100 Gift Card.**

fondersewing.com



# **Class 4**

---

## **CRAFTS & HOBBIES**

*Remember exhibits MUST have been made 100% by the exhibitor within the last 2 years.*

***Maximum 2 exhibits per lot.***

*Refer to pages 4-6 for full submission information.*

### **Clay**

Lot 400 Any ceramic item

Lot 401 Any pottery item

### **Hand Painted China**

Lot 405 Double Roses/Flowers

Lot 406 Scenes

Lot 407 Animals

Lot 408 Fruit

Lot 409 Penwork/enamel/gold

Lot 410 Rosemaling

Lot 411 Any other hand painted China



### **Metals**

Lot 415 Plate or tray

Lot 416 Jewelry

Lot 417 Wall decoration

Lot 418 Any other metal item not mentioned above

### **Wood**

Lot 420 Any original functional piece

Lot 421 Toys

Lot 422 Doll house or doll furniture

Lot 423 Scroll sawing/fretwork

Lot 424 Abstract and ornamental

Lot 425 Refinished wood article (include before and after photos)

Lot 426 Any Woodcarving or sculpture item for novice

Lot 427 Any Woodcarving or sculpture item for advanced

Lot 428 Any other wood article not mentioned above

### **Jewelry**

Lot 430 Beaded

Lot 431 Kit/pattern

Lot 432 Any other item not mentioned above

**Scrapbook**

Lot 435 Free style

Lot 436 Mini book

Lot 437 Computer generated

Lot 438 Any other item not mentioned above

**Table Arrangements**

*Include complete place setting including dishes, silverware, centerpiece & table cover. Artificial flowers only – no fresh flowers. Menu may be included.*

Lot 440 America the Beautiful

Lot 441 Holiday

Lot 442 Special Occasion (occasion should be recognizable)

Lot 443 Any other theme not mentioned above

**Christmas Bazaar**

Lot 450 Tree skirt

Lot 451 Tree ornaments (no more than 6)

Lot 452 Wall or Door Christmas decoration (including Wreaths)

Lot 453 Christmas stocking

Lot 454 Candles

Lot 455 Centerpiece

Lot 456 Any other Christmas item not mentioned above

**Recycled**

*Before and after photos are encouraged.*

Lot 460 Made over garment

Lot 461 Jewelry

Lot 462 Purses & bags

Lot 463 Items made from old pallets or wood items

Lot 464 Items made from old metal

Lot 465 Refurbished old piece (furniture, toys, etc.)

Lot 466 Items made with mixed recycled material

Lot 467 Any other recycled item not mentioned above

**Miscellaneous Bazaar**

Lot 470 Stained glass article

Lot 471 Leather article

Lot 472 Beading

Lot 473 Diamond Art (example: Diamond Dotz, Paint with Diamonds, etc.)

Lot 474 Decoupage article

Lot 475 Stamping

Lot 476 Candles  
 Lot 477 Miniatures (room scene or diorama)  
 Lot 478 String art  
 Lot 479 Macrame  
 Lot 480 Stenciling  
 Lot 481 Garden decor  
 Lot 482 Centerpieces/table décor  
 Lot 483 Wall or Door decoration (including Wreaths with artificial material)  
 Lot 484 Greeting card  
 Lot 485 Model car/airplane  
 Lot 486 Decorated sweatshirt/T-shirt  
 Lot 487 Poem  
 Lot 488 Tie blanket (lap size)  
 Lot 489 Any other art, craft or hobby not mentioned above

### Computer Created

Lot 490 3D Printed Object (MUST be original design of exhibitor, NO downloads)  
 Lot 491 AI Artwork – **Subject: Lion holding a red balloon and sitting on a green chair** (MUST be framed, original work, & avoid copyright infringements.)

### Crafts for Disabled

Lot 495 Any craft item



**FirstNationalBank**  
The First National Bank in Sioux Falls®

fnbsf.com



### Best of Show Rosette and Special Award

First National Bank in Sioux Falls • [www.fnbsf.com](http://www.fnbsf.com)

100 S. Phillips Ave., Sioux Falls, SD 57104 • 605-335-5200

will award the Outstanding Exhibit in (Crafts & Hobbies Adult) a **\$100 Gift Card**.

**Not just for  
kids any more**

# BRICKS & MINIFIGS®

**GIFT  
CARD  
PRIZES**

1<sup>ST</sup> \$50  
2<sup>ND</sup> \$25  
3<sup>RD</sup> \$10

**ADULTS WELCOME!!**  
**WED. 8/ 6 /25**  
**15 AND UP 6:30PM**

**BUILD YOUR BRICKS CHALLENGE!**  
SEE THE CONTEST FORM AT THE END OF THE BOOK OR  
SCAN THIS QR CODE TO REGISTER ONLINE





4th Annual Taulelle Concessions  
French Fry Stacking Contest  
Adult contest Sat. 8/9/25 @ 2:30PM  
See the contest form at the end of the book or  
scan this QR code to register today



## Class 5



### PHOTOGRAPHY



*All photos **MUST** be 8"x10" or 8"x12" and mounted on 10"x14" plain black or white 1/4-inch foam core board. (A limited number of **White 10"x14" boards** are available at the fair office for \$2 (605-367-7178). Pickup: Mon–Thu 9–4, Fri 9–2.) Incorrect photo or board sizes will be disqualified. Loose mounting will be docked one ribbon placing. **No matting, frames, matte board, watermarks, or advertising.** Attach **Entry Tag** with Scotch tape to **upper left corner**; write lot description from Premium Book. No plastic covering needed; displays will be protected after judging. And all photos **MUST** be **taken within the last 2 years.***

***Maximum 2 exhibits per lot. Refer to pages 4-6 for full submission information.***

#### Score Card

Composition.....	45%
Photo Quality.....	45%
Followed Mounting Directions.....	10%
Total	100%

#### Color

- Lot 500 Landscape
- Lot 501 Skyscape
- Lot 502 Still life/abstract
- Lot 503 Macro (taken at less than 1 foot)
- Lot 504 People
- Lot 505 Action
- Lot 506 Architecture
- Lot 507 Flora
- Lot 508 Animals
- Lot 509 South Dakota
- Lot 510 Digitally Manipulated – attach original picture
- Lot 511 Film only – attach negative in envelope to back of board
- Lot 512 Comedic Moments – (i.e. *A cat sneezing, Baby's first sour food*)

haroldspphoto.com



# HAROLD'S

## Best of Show Rosette and Special Award

Harold's Photo Centers • [www.haroldspphoto.com](http://www.haroldspphoto.com)

912 W. 41st St., Sioux Falls, SD 57105 • 800-568-6619

will award the Outstanding Exhibit in (Color Photography Adult) a **\$50 gift certificate.**

### **Black & White**

Lot 515 Landscape

Lot 516 Skyscape

Lot 517 Still life/abstract

Lot 518 Macro (taken at less than 1 foot)

Lot 519 People

Lot 520 Action

Lot 521 Architecture

Lot 522 Flora

Lot 523 Animals

Lot 524 South Dakota

Lot 525 Digitally manipulated – attach original picture

Lot 526 Film only – attach negative in envelope to back of board

Lot 527 Positive Journalism – (*i.e. Ribbon cuttings, Animal rescue*)

haroldspphoto.com



# HAROLD'S

## Best of Show Rosette and Special Award

Harold's Photo Centers • [www.haroldspphoto.com](http://www.haroldspphoto.com)

912 W. 41st St., Sioux Falls, SD 57105 • 800-568-6619

will award the Outstanding Exhibit in (B&W Photography Adult) a **\$50 gift certificate.**

### **Sweeter Images Photo Contest**

Lot 530 Sweeter Images Photo Contest – (“Working Hands” Theme)



#### **Sweeter Images Photo Contest (\$25 Cash Prize)**

**Lot 530 “Working Hands”** Any photo taken in the last 2 years that focuses on hands at work.

**\*\*Themed category for the 2026 fair will be “Circles”\*\***

Sweeter Images & Words • 605-251-8497

Follow on Facebook under Sweeter Images & Words

47150 283rd St., Worthing, SD 57077



## Class 6

### ARTWORK

*All Artwork MUST be completed by non-professional artists and done within the last two years. Frames are optional. No advertising allowed.*

*Maximum 2 exhibits per lot.*

*Refer to pages 4-6 for full submission information.*



### **!!! NOTICE !!!**

*Due to issues in the past, **Wall art MUST be structurally sound and capable of enduring two weeks of display, secured with appropriately strong picture wire, attached by the exhibitor.***

*Submissions not ready to hang may be docked one group placement or disqualified.*

Lot 600 Oil (Wall Art must follow hanging instructions above)

Lot 601 Watercolor (Wall Art must follow hanging instructions above)

Lot 602 Prints and drawings (Wall Art must follow hanging instructions above)

Lot 603 Tempera, acrylic (Wall Art must follow hanging instructions above)

Lot 604 Sculpture

Lot 605 South Dakota Scene (any medium) (Wall Art must follow hanging instructions above)

Lot 606 Charcoal (Wall Art must follow hanging instructions above)

Lot 607 Oil pastel/chalk (Wall Art must follow hanging instructions above)

Lot 608 Mixed medium (Medium refers to paint or art material) (Wall Art must follow hanging instructions above)

Lot 609 Any other artwork not mentioned above (Wall Art must follow hanging instructions above)

#### ARTS CENTER



[siouxempirefair.com/p/sioux-empirefair/arts-center](http://siouxempirefair.com/p/sioux-empirefair/arts-center)

The Artwork (Adult) sponsor for the Best of Show award is in the final stages of confirmation. We look forward to announcing their support soon!

For the sponsorship updates please watch our webpage and Facebook page by scanning the QR Codes or visiting the provided links.



[www.facebook.com/sefartscenter](http://www.facebook.com/sefartscenter)

## Class 7

### ANTIQUES

*Antiques are 50 plus years old. Antiques will be judged on the following criteria:*

*Age, Condition, Collectability, Marks, Workmanship, and Beauty.*

*Due to reproductions, please include a history of the object, including dates, typed (if possible) on a 3x5 card. A description helps identify exhibits and is interesting to the public.  
**Maximum 2 exhibits per lot.** Refer to pages 4-6 for full submission information.*

- Lot 700 Book
- Lot 701 Brass or copper
- Lot 702 China
- Lot 703 Christmas
- Lot 704 Clock/watch/jewelry
- Lot 705 Clothing
- Lot 706 Cookie jar
- Lot 707 Coverlet or quilt/bedding
- Lot 708 Cut glass
- Lot 709 Depression glass
- Lot 710 Doll
- Lot 711 Earthenware (Crockery)
- Lot 712 Etched glass
- Lot 713 Graniteware
- Lot 714 Pictures
- Lot 715 Heirloom, small article
- Lot 716 Iron item
- Lot 717 Postcard
- Lot 718 Pressed glass
- Lot 719 Restored
- Lot 720 Silver or pewter
- Lot 721 Tin
- Lot 722 Tools
- Lot 723 Toy
- Lot 724 Valentines
- Lot 725 Wooden item
- Lot 726 4-H or county fair item
- Lot 727 Button or pin
- Lot 728 Any other antique not mentioned above



**Best of Show Rosette and Special Award**  
605 Antiques • [www.facebook.com/605antiques](http://www.facebook.com/605antiques)  
3201 S. Shirley Ave., Sioux Falls, SD 57106 •  
605-ANTIQUE (268-4783)  
will award the Outstanding Exhibit in  
(Antiques) a **\$150 gift certificate.**





# Class 8

## BAKED GOODS

*NO BAKED GOODS REQUIRING REFRIGERATION, **UNLESS OTHERWISE SPECIFIED.***

*All baked goods should be submitted on a white Styrofoam or paper plate, with the Entry Tag stapled to it, and placed in a plastic zip lock bag, unless otherwise specified.*

***This is not a rule, it is a request:***

***To keep this department from growing stale, we ask that previously used recipes be freshened up with new or swapped ingredients, or preparation techniques.***

***\*\*Note: If submitting two different exhibits in one lot, the submissions MUST be made with different recipes. Recipes MUST accompany exhibits as they are part of the judging.***

***Maximum 2 exhibits per lot. Refer to pages 4-6 for full submission information.***

### Bread

#### **Yeast Dough (Full loaf, any size above 5")**

- Lot 800 White bread
- Lot 801 Whole wheat bread
- Lot 802 Rolls, white (2)
- Lot 803 Rolls, dark (2)
- Lot 804 Fruit or raisin bread
- Lot 805 Coffee cake
- Lot 806 Cinnamon rolls (2)
- Lot 807 Caramel rolls (2)
- Lot 808 Tea ring
- Lot 809 Doughnuts, raised (2)
- Lot 810 Ethnic bread or rolls (2)
- Lot 811 Non-Wheat grain breads (identify)
- Lot 812 Non-Wheat grain rolls (identify)
- Lot 813 Any other yeast dough bread not mentioned above



#### **Quick Breads (Full loaf, any size above 5")**

- Lot 814 Muffins, any flavor (2)
- Lot 815 Banana bread
- Lot 816 Pumpkin bread
- Lot 817 Zucchini bread
- Lot 818 Fruit bread
- Lot 819 Any other quick bread not mentioned above

**Cake (Full cake – Any of the following: Single layer cakes need no frosting. Two-layer cakes should be frosted. Please aim for 8” or 9” round or square cakes, or an unfrosted bundt cake. If using frosting, it needs to be in the recipe. Cakes must be submitted on disposable cake boards and preferably delivered in a disposable box.)**

Lot 820 Any white cake

Lot 821 Any chocolate cake

Lot 822 Any other flavor cake

Lot 823 Any cake baked without shortening

Lot 824 Any cake baked without wheat flour

Lot 825 Any flavor decorated cupcakes (Set of 4, regular size)

Lot 826 Decorated Theme Cake **(This year’s theme “Fall or Harvest”)**

**Cookies & Miscellaneous (2 of each)**

Lot 830 Sugar cookies

Lot 831 Ginger/Molasses cookies

Lot 832 Filled/Sandwich cookies

Lot 833 Peanut butter cookies

Lot 834 Oatmeal cookies

Lot 835 Refrigerator cookies

Lot 836 Cereal cookies (baked)

Lot 837 Chocolate cookies

Lot 838 Party or tea cookies

Lot 839 Fruit & nut cookies

Lot 840 Chocolate chip cookies

Lot 841 Diabetic or sugar-free cookies

Lot 842 Any Gluten-Free cookie

Lot 843 Any other cookie not mentioned above

Lot 844 Unbaked cookies, drop

Lot 845 Unbaked cookie bar

Lot 846 Any baked bars

Lot 847 Cake doughnuts, plain

Lot 848 Any choux pastry (NO cream)

Lot 849 Brownies, plain or including nuts, caramel, candy etc.

Lot 850 Any flavor macaron with shelf stable filling

Lot 851 Any candy (2 pieces)

**Pies & Cheesecakes (An \* denotes refrigerated lots.)**

Lot 860 Any fruit pie, baked (Pies may be individual size or half a 9” pie.)

Lot 861 Any other pie, baked (Pies may be individual size or half a 9” pie.)

Lot 862 \*Any chilled pie (Pies may be individual size or half a 9" pie.)

Lot 863 \*Plain cheesecake (Whole or half 8" or 9" cheesecake.)

Lot 864 \*Fruit cheesecake (Whole or half 8" or 9" cheesecake.)

Lot 865 \*Any other cheesecake (Whole or half 8" or 9" cheesecake.)

**If submitting chilled exhibits, please keep in mind that there may be a lengthy submission line. As soon as you arrive, ask any Arts Center staff member to place your exhibit (with Entry Tag) in the cooler until it is your turn to process your submission/s. Remind us that it's here though.**

Hy-vee.com



**Best of Show Rosette and Special Award**

Hy-Vee • [www.hy-vee.com](http://www.hy-vee.com)  
customer@hy-vee.com • 515-267-2800  
will award the Outstanding Exhibit in  
(Baked Goods - Adult) a **\$100 gift card.**



**King Arthur Baking Co. Baking Contest**  
**Submission Date: Sat. 8/2/25 Time: 10AM - 11:50AM**

**Adult division will be submitting MUFFINS**

Prizes include 1st, 2nd, & 3rd place Gift Cards  
from King Arthur Baking Co. See the Contest Form  
at the end of the book or scan this QR code to  
register online



**More contests may be added. Keep an eye on our Facebook page and webpage.**

**Not just for  
kids any more**



GOURMET CUPCAKERY

**4th Annual Oh My Cupcakes!  
Cupcake Decorating Contest**

**Wed.  
8/6/25**

Winners will receive 12 "1 Free Regular Cupcake" Tokens  
from Oh My Cupcakes!

**Age Groups & Times**

**15-40 y/o 11:20AM - 40+ y/o 11:40AM**

See the contest form at the end of the book or scan this QR code to register today



[siouxempirefair.com/f/48](http://siouxempirefair.com/f/48)

# Class 9

## FOOD PRESERVATION

*Exhibits of canned goods must be in standard clear glass jars. Jelly must be in standard jelly glasses. See headings for each section. Attach label to each jar stating if it was processed by hot water bath or pressure canner, and for how long. Jars sealed with paraffin will not be accepted.*

*Jars must have rings. Refer to the Ball Blue Book for more canning information.*

*Remember exhibits MUST have been made 100% by the exhibitor within the last 2 years.*

*Maximum 2 exhibits per lot. Refer to pages 4-6 for full submission information.*

### Score Card

Jar (clean, clear glass, standard type, tightly sealed) .....	10%
Pack (proper headspace, uniform pieces, practical pack, product to liquid ratio)...	30%
Product (original product good quality and degree of maturity, free from indication of spoilage, standard color consistency) .....	40%
Liquid .....	20%
Total	100%

### **Canned Fruit**

Lot 900 Cherries

Lot 901 Peaches

Lot 902 Pears

Lot 903 Rhubarb

Lot 904 Strawberries

Lot 905 Applesauce

Lot 906 Pie filling

Lot 907 Any other canned fruit not mentioned above (identify contents)

### **Canned Vegetables**

Lot 910 Asparagus

Lot 911 Beans, yellow string

Lot 912 Beans, green string

Lot 913 Beets

Lot 914 Carrots

Lot 915 Mixed vegetables for soup

Lot 916 Tomatoes

Lot 917 Any other canned vegetable not mentioned above (identify contents)

### **Canned Meats**

Lot 920 Any canned meat (identify contents)

### **Preserves**



Lot 925 Cherry  
Lot 926 Peach  
Lot 927 Tomato  
Lot 928 Strawberry  
Lot 929 Any other preserves not mentioned above (identify contents)

**Jams**

Lot 930 Rhubarb  
Lot 931 Plum  
Lot 932 Raspberry  
Lot 933 Strawberry  
Lot 934 Sugar-free  
Lot 935 Any other jam not mentioned above (identify contents)

**Fruit Butter**

Lot 940 Apple  
Lot 941 Peach  
Lot 942 Any other fruit butter not mentioned above (identify contents)

**Jellies**

Lot 945 Any jelly (identify contents)

**Canned Fruit Juices**

Lot 950 Rhubarb  
Lot 951 Tomato  
Lot 952 Any other juice not mentioned above (identify contents)

**Pickles**

Lot 955 Bean  
Lot 956 Beet  
Lot 957 Bread & butter  
Lot 958 Cucumber, sweet (sliced)  
Lot 959 Cucumber, sour (sliced)  
Lot 960 Cucumber, dill (whole)  
Lot 961 Pickle relish  
Lot 962 Corn relish  
Lot 963 Spiced fruit  
Lot 964 Watermelon  
Lot 965 Salsa  
Lot 966 Any other pickles not mentioned above (identify contents)

**Hot Sauces**

Lot 968 Hot Sauce (submit in plain jar or bottle)



### **Dried Foods**

Lot 970 Meat

Lot 971 Vegetables

Lot 972 Fruits

Lot 973 Any other dried food not mentioned above (identify contents)

### **Freeze Dried**

Lot 977 Candy (identify)

Lot 978 Fruit (identify)

Lot 979 Vegetables (identify)

Lot 980 Soup or Meal (identify)

Lot 981 Any other freeze dried food not mentioned above (identify)

### **Wines/Beer**

Lot 985 Any wine (identify)

Lot 986 Any beer (identify)

fleetfarm.com



# **Fleet Farm**

**Best of Show Rosette and Special Award**

Fleet Farm • [www.fleetfarm.com](http://www.fleetfarm.com)

3035 W Fleet Street Sioux Falls, SD 57107 • (605) 444-7200

will award the Outstanding Exhibit in

(Food Preservation - Adult) a **\$100 gift card**.

## **FLORICULTURE**

*All specimens in the floriculture class must be grown by the exhibitor. Exhibitors must furnish a clear glass container for each specimen they show. No foliage in the water. Foliage/stem does not need to be attached. Specimens must be uniform.*

### **Class 10**

## **FLORICULTURE FOR AMATEURS**

***Maximum 2 exhibits per lot.***

*Refer to pages 4-6 for full submission information.*



## **ANNUALS**

### **Single bloom or stalk**

- Lot F001 Ageratum
- Lot F002 Amaranthus
- Lot F003 Begonia, any
- Lot F004 Bells of Ireland
- Lot F005 Celosia (Crested)
- Lot F006 Celosia (Plume)
- Lot F007 Dahlia
- Lot F008 Gerbera Daisy
- Lot F009 Salvia
- Lot F010 Sunflower
- Lot F011 Vinca

### **3 blooms or stalks**

- Lot F012 Asters (single or double but all three blooms or stalks need to be the same kind)
- Lot F013 Bachelor's buttons
- Lot F014 Calendulas
- Lot F015 Coreopsis
- Lot F016 Cosmos (single or double)
- Lot F017 Cleome
- Lot F018 Foxglove
- Lot F019 Marigolds, orange
- Lot F020 Marigolds, yellow
- Lot F021 Marigolds, bi-colors
- Lot F022 Petunias (single)
- Lot F023 Petunias (double)
- Lot F024 Lantana
- Lot F025 Snapdragons
- Lot F026 Zinnias, large (3" bloom or larger) (all blooms should be the same color)
- Lot F027 Zinnias, small (3" bloom or smaller) (all blooms should be the same color)
- Lot F028 Everlastings

### **5 blooms or stalks**

- Lot F029 Nasturtiums
- Lot F030 Pansies
- Lot F031 Pinks or Dianthus
- Lot F032 Sweet Peas
- Lot F033 Verbenas

Lot F034 Violas

Lot F035 Any other annual not mentioned above (identify)

**Annuals Collection (no less than 5, no more than 10 stems, no more than 1 stem of each variety)**

Lot F036 Mixed field variety of wildflowers

Lot F037 Collection of perennial garden flowers

Lot F038 Collection of annuals

Lot F039 Cultured wildflowers

**PERENNIALS**

**One bloom or stalk**

Lot F040 Aster

Lot F041 Balloon Flower

Lot F042 Bee Balm

Lot F043 Black Eyed Susan

Lot F044 Chrysanthemum

Lot F045 Coneflower

Lot F046 Coreopsis

Lot F047 Delphinium

Lot F048 Gaillardia (3 stems)

Lot F049 Hibiscus

Lot F050 Phlox

Lot F051 Salvia

Lot F052 Shasta Daisy

Lot F053 Violas

Lot F054 Rose

Lot F055 Any other perennial not mentioned above (identify)

**Gladiolus (One Stem)**

Lot F060 White

Lot F061 Green

Lot F062 Cream

Lot F063 Yellow

Lot F064 Orange

Lot F065 Salmon

Lot F066 Pink

Lot F067 Red

Lot F068 Purple/Lavender

Lot F069 Brown

Lot F070 Multi-color  
Lot F071 3 spikes, any color  
Lot F072 Miniature, any color  
Lot F073 Any other colored gladiolus not mentioned above (identify)

### **Dahlias**

Lot F075 Large decorative over 6"  
Lot F076 Medium under 6"  
Lot F077 Ball type over 6"  
Lot F078 Miniature 2-4"  
Lot F079 Any cactus type  
Lot F080 Pom or border  
Lot F081 3 Blooms, similar size of any variety

### **Other Corms, Bulbs, Tubers & Rhizomes**

#### **One Stem**

Lot F085 Canna  
Lot F086 Calla Lily  
Lot F087 Fairy Lily or Resurrection Lily  
Lot F088 Tiger Lily  
Lot F089 Oriental Lily  
Lot F090 Asiatic Lily  
Lot F091 Allium  
Lot F092 Any other corm, bulb, tuber or rhizome not mentioned above (identify)



#### **Best of Show Rosette and Special Award**

Oakridge Nursery & Landscaping Inc. • [www.oakridgenurseryinc.com](http://www.oakridgenurseryinc.com)

2217 S. Splitrock Blvd., Brandon, SD 57005

605-582-6565

will award the Outstanding Exhibit in  
(Adult Floriculture) a **\$40 Gift Card**.

[oakridgenurseryinc.com](http://oakridgenurseryinc.com)



## **Class 11**

### **OTHER PLANTS, VINES, CONTAINERS**

*Potted plants must not have been exhibited in any **previous** Sioux Empire Fair.  
All Potted plants **MUST** be submitted with a saucer. **Maximum 2 exhibits per lot.**  
Refer to pages 4-6 for full submission information.*

## **Vines or Shrubs**

Lot F200 Hydrangea, 3 stems with foliage

Lot F201 Trumpet Vine

Lot F202 Any other vine or shrub not mentioned above (identify)

## **Potted Plants**

Lot F205 African Violets

Lot F206 Begonias – single bloom, 1 plant

Lot F207 Begonias – double bloom, 1 plant

Lot F208 Begonias – Tuberous bloom, 1 plant

Lot F209 Cactus, any kind, 1 plant

Lot F210 Succulent, any kind, 1 plant

Lot F211 Any collection of 3 different cacti in 1 pot

Lot F212 Jade, 1 plant

Lot F213 Coleus

Lot F214 Geranium

Lot F215 Hibiscus

Lot F216 Ivy, Swedish

Lot F217 Ivy, grape

Lot F218 Ivy, English

Lot F219 Ivy, German

Lot F220 Ivy, variegated

Lot F221 Philodendron or Pothos, plain

Lot F222 Philodendron or Pothos, variegated

Lot F223 Sansevieria

Lot F224 Bromeliads, all varieties

Lot F225 House Plant, collection of 3 different plants in 1 pot

Lot F226 House Plant

Lot F227 House Plant, hanging plant

Lot F228 Table planter

Lot F229 Desert scene in a dish garden

Lot F230 Planter collection, 3 or more

Lot F231 Boston Fern

Lot F232 Asparagus Fern

Lot F233 Any other fern

Lot F234 Single impatiens, any color, 1 plant

Lot F235 Double impatiens, any color, 1 plant





### Container Grown

Lot F240 Mixture of plants in 1 container

Lot F241 Any outside lawn planter

Lot F242 Fairy Garden

Lot F243 Any other container grown plant not mentioned above (identify)

### Foliage Based Wreaths, Wall/Door Hangings, Topiaries (only 15% may be artificial)

Lot F245 Any wreath

Lot F246 Any wall/door hanging

Lot F247 Any topiary



#### **Best of Show Rosette and Special Award**

Oakridge Nursery & Landscaping Inc. • [www.oakridgenurseryinc.com](http://www.oakridgenurseryinc.com)

2217 S. Splitrock Blvd., Brandon, SD 57005

605-582-6565

will award the Outstanding Exhibit in  
(Other Plants, Vines & Containers) a **\$40 Gift Card**.

[oakridgenurseryinc.com](http://oakridgenurseryinc.com)



## Class 12

### FLORAL ARRANGEMENTS

*Flowers need not be grown by exhibitor, but the arrangement MUST be the original work of the exhibitor. **NO** artificial flowers allowed. Artificial fruit and accessories are permissible. Dyed, painted, gilded or otherwise treated material and accessories are allowed, but fresh plant material should be dominant. Doilies, placemats, etc. will be acceptable under arrangements if in proportion to arrangements. **Maximum 2 exhibits per lot.***

*Refer to pages 4-6 for full submission information.*



#### **Artistic Entries** (12" tall or taller)

Lot F300 Annuals (any color)

Lot F301 Perennials (any color)

Lot F302 Annuals & Perennials Mixed (any color)

#### **Miniature Artistic Design** (Size 5" x 5" x 5" including any container base or doily)

Lot F305 Radiant Red (predominately RED flowers)

Lot F306 Perfectly Purple (predominately flowers in the PURPLE spectrum)

Lot F307 South Dakota Grown (native flowers)



### **Best of Show Rosette and Special Award**

Oakridge Nursery & Landscaping Inc. • [www.oakridgenurseryinc.com](http://www.oakridgenurseryinc.com)

2217 S. Splitrock Blvd., Brandon, SD 57005

605-582-6565

will award the Outstanding Exhibit in  
(Floral Arrangement) a **\$30 Gift Card**.

[oakridgenurseryinc.com](http://oakridgenurseryinc.com)



## **HORTICULTURE**

*Include variety on Entry Tag. Submit on white Styrofoam or paper plate, with  
Entry Tag stapled to the right side of the plate.*

*Follow exhibiting guidelines found in the*

*“Preparing Horticultural Exhibits” from SDSU Extension.*

<https://extension.sdstate.edu/sites/default/files/2019-06/P-00120.pdf>

SDSU Extension link



## **Class 13**

### **VEGETABLES**

*Exhibits MUST be grown by the exhibitor.*

***Maximum 2 exhibits per lot. Refer to pages 4-6 for full submission information.***

Lot H001 Beans, Green (5) ¼-1/2 inch stem

Lot H002 Beans, Yellow (5) ¼-1/2 inch stem

Lot H003 Beans, Lima (baby or other) (5) ¼-1/2 inch stem

Lot H004 Beans, Purple (5) ¼-1/2 inch stem

Lot H005 Beets (3) Trim tops to 1” length

Lot H006 Broccoli (1 floweret, 1 head) trim leaves, stalk & head should be at least 6 inches

Lot H007 Cabbage, flat, round or red (1 head, trim, but keep leaves near head, stalk ¼-inch long)

Lot H008 Carrots (3) do not remove tip of root, trim tops to 1”

Lot H009 Cauliflower (1 head)

Lot H010 Corn (3 ears), any kind (wrapped loosely in plastic wrap)

Lot H011 Cucumbers, slicing, (1) (half inch stem attached)

Lot H012 Cucumbers, pickling, 2-3” (3) (half inch stem attached)

Lot H013 Cucumbers, long burpless type (1) (half inch stem attached)

Lot H014 Eggplant (1)

Lot H015 Gourds, large (1)

Lot H016 Gourds, small (3)

Lot H017 Gourds, dried

Lot H018 Kale (1), place roots in jar of water



Lot H019 Kohlrabi (3) (trim tops & roots)  
 Lot H020 Muskmelon (1) (with stem attached)  
 Lot H021 Onions, white (3)  
 Lot H022 Onions, yellow (3)  
 Lot H023 Onions, red globe (3)  
 Lot H024 Onions, green (3)  
 Lot H025 Onions, dried storage (3)  
 Lot H026 Sweet peppers, green or red (3 small or 1 large)  
 Lot H027 Hot peppers (3 small or 1 large)  
 Lot H028 Peppers, yellow (3 small or 1 large)  
 Lot H029 Peppers, ornamental (3 small or 1 large)  
 Lot H030 Potatoes, white (3)  
 Lot H031 Potatoes, red (3)  
 Lot H032 Potatoes, any other type (3)  
 Lot H033 Pumpkin (1 large or 3 miniature)  
 Lot H034 Rhubarb (3 stalks)  
 Lot H035 Zucchini, under 8" (3)  
 Lot H036 Summer squash, early straight neck, 6-8" (3)  
 Lot H037 Summer squash, any other variety not listed (1 large or 3 small)  
 Lot H038 Fall squash, any variety (1)  
 Lot H039 Tomatoes, red, large (1)  
 Lot H040 Tomatoes, yellow, small pear (3)  
 Lot H041 Tomatoes, red, cherry (3)  
 Lot H042 Tomatoes, yellow, large (1)  
 Lot H043 Tomatoes, any other (3)  
 Lot H044 Watermelon (1)  
 Lot H045 Any other vegetable not listed above  
 Lot H046 Vegetable tray/basket - 10 separate kinds of homegrown veggies artistically arranged  
 Lot H047 Vegetable figure – artistic figure made from homegrown vegetables  
 Lot H048 Novelty vegetable – Mother Nature's comic vegetable  
 Lot H049 Novelty vegetable – largest vegetable (1)  
 Lot H050 Novelty vegetable – smallest ripe vegetable (1)



**Best of Show Rosette and Special Award**  
 Cliff Avenue Greenhouse & Garden Center  
[www.cliffavegreenhouse.com](http://www.cliffavegreenhouse.com)  
 2101 E. 26th St., Sioux Falls, SD 57105  
 605-332-6641  
 will award the Outstanding Exhibit in  
 (Vegetables- Adult) a **\$50 gift certificate.**



## Class 14

### FRUITS

*Exhibits MUST be grown by the exhibitor.*

**Maximum 2 exhibits per lot. Refer to pages 4-6 for full submission information.**

- Lot H100 Apples, any variety (3)
- Lot H101 Grapes, any variety, 3 clusters
- Lot H102 Pears, any variety (3)
- Lot H103 Plums, any variety (6)
- Lot H104 Raspberries (10)
- Lot H105 Strawberries (10)
- Lot H106 Fruit collection – any collection of 6 homegrown fruits
- Lot H107 Any other fruit not listed above



cliffavegreenhouse.com



#### **Best of Show Rosette and Special Award**

Cliff Avenue Greenhouse & Garden Center

[www.cliffavegreenhouse.com](http://www.cliffavegreenhouse.com)

2101 E. 26th St., Sioux Falls, SD 57105

605-332-6641

will award the Outstanding Exhibit in  
(Fruit - Adult) a **\$50 gift certificate.**



## Class 15

### HERBS

*Exhibits MUST be grown by the exhibitor. Submit fresh herbs in small clear glass containers.*

**Maximum 2 exhibits per lot. Refer to pages 4-6 for full submission information.**

- Lot H200 Dill (1)
- Lot H201 Basil (3)
- Lot H202 Cilantro (3)
- Lot H203 Feverfew (3)
- Lot H204 Winter savory (3)
- Lot H205 Rosemary (3)
- Lot H206 Chives (5)
- Lot H207 Sage (3)
- Lot H208 Parsley (3)
- Lot H209 Oregano (3)



- Lot H210 Thyme (3)
- Lot H211 Mint (3)
- Lot H212 Lavender (3)
- Lot H213 Fennel (1)
- Lot H214 Garlic (1 bulb)
- Lot H215 Tarragon (3)
- Lot H216 Marjoram (3)
- Lot H217 Yarrow (3)
- Lot H218 Any other herb not mentioned above (identify)

cliffavegreenhouse.com



**Best of Show Rosette and Special Award**  
 Cliff Avenue Greenhouse & Garden Center  
[www.cliffavegreenhouse.com](http://www.cliffavegreenhouse.com)  
 2101 E. 26th St., Sioux Falls, SD 57105  
 605-332-6641  
 will award the Outstanding Exhibit in  
 (Herb - Adult) a **\$50 gift certificate.**



## **JUNIOR DIVISION**

### **!!ATTENTION!!**

**The Sioux Empire Fair's Junior division includes all exhibitors from ages 2-18.**

It is **REQUIRED** to include the exhibitor's age on their submission form and in the upper righthand corner of each Entry Tag. This helps our judges determine exhibits that may move on to compete for our area at the South Dakota State Fair, and it will help with our records. Junior exhibitors may receive guidance, but **85%** of the exhibit **MUST** be completed by them.

## **Class 16**

### **JUNIOR CRAFTS & HOBBIES**

*Remember exhibits **MUST** have been made within the last 2 years.*

***Maximum 2 exhibits per lot. Refer to pages 4-6 for full submission information.***

- Lot J100 Wood craft
- Lot J101 Ceramic
- Lot J102 Crayon art
- Lot J103 Clay, air dry or baked
- Lot J104 Decoupage
- Lot J105 Metals



- Lot J106 String craft
- Lot J107 Christmas
- Lot J108 Buttons
- Lot J109 Model car, plane, etc.
- Lot J110 Miniature (furnished room or house)
- Lot J111 Paper
- Lot J112 Collection of small items (secured on firm base)
- Lot J113 Flip Flop Art
- Lot J114 Jewelry
- Lot J115 Sun catchers
- Lot J116 Diamond Painting (Diamond Dotz, Paint with Diamonds, etc.)
- Lot J117 Fabric
- Lot J118 Recycled (include photo of original item(s) if possible)
- Lot J119 Beading
- Lot J120 Scrapbook
- Lot J121 Stamping
- Lot J122 Tie Blanket (lap size)
- Lot J123 LEGO, any theme (identify) *All LEGO items must be firmly attached to a solid base, which can be no larger than 15"x15."*
- Lot J124 LEGO, original creation (provide description on entry tag) *All LEGO items must be firmly attached to a solid base, which can be no larger than 15"x15."*
- Lot J125 3D printed object (MUST be original design of exhibitor and NOT downloaded)
- Lot J126 Any other craft or hobby not listed above



**FirstNationalBank**  
The First National Bank in Sioux Falls®

fnbsf.com



**Best of Show Rosette and Special Award**

First National Bank in Sioux Falls • [www.fnbsf.com](http://www.fnbsf.com)

100 S. Phillips Ave., Sioux Falls, SD 57104 • 605-335-5200

will award the Outstanding Exhibit in (Jr. Crafts & Hobbies) a **\$100 Gift Card**.

**FirstNationalBank**  
The First National Bank in Sioux Falls®

**For ages 8-12**

**Paint-A-Piggy-Bank Contest**

**Tuesday, August 5th 2025 10AM until 1:30PM**

All contestants will receive **\$2** in nickels, and the winner will receive **\$25** in cash. See contest form at the end of the book or scan this QR code to register online.

# BRICKS & MINIFIGS®



**GIFT CARD PRIZES PER CONTEST**

**1<sup>ST</sup> \$50**  
**2<sup>ND</sup> \$25**  
**3<sup>RD</sup> \$10**

**WED. 8/6/25**  
**6-9 AGE 12:30PM**  
**10-14 AGE 1:05PM**

**BUILD YOUR BRICKS CHALLENGE!**  
 SEE THE CONTEST FORM AT THE END OF THE BOOK OR  
 SCAN THIS QR CODE TO REGISTER ONLINE



4th Annual Taulelle Concessions  
 French Fry Stacking Contest  
 Junior contest Fri. 8/8/25 @ 2:30PM  
 See the contest form at the end of the book or  
 scan this QR code to register today



## Class 17

---

### JUNIOR NEEDLEWORK

*Remember exhibits MUST have been made within the last 2 years.  
 Maximum 2 exhibits per lot. Refer to pages 4-6 for full submission information.*

#### Fine Needlework

- Lot J200 Creative stitchery (original design)
- Lot J201 Embroidery
- Lot J202 Applique
- Lot J203 Counted cross stitch
- Lot J204 Needlepoint
- Lot J205 Latch hook
- Lot J206 Any other needlework not mentioned above



**ARTS CENTER**



[siouxempirefair.com/p/sioux-empirefair/arts-center](http://siouxempirefair.com/p/sioux-empirefair/arts-center)

The Fine Needlework (Junior) sponsor for the Best of Show award is in the final stages of confirmation. We look forward to announcing their support soon!

For the sponsorship updates please watch our webpage and Facebook page by scanning the QR Codes or visiting the provided links.



[www.facebook.com/sefartscenter](https://www.facebook.com/sefartscenter)

## ----- Jr. Needlework - Section 2 -----

*Exhibits that are to be hung should be submitted on hangers with dry-cleaning type garment bags. Remember exhibits MUST have been made within the last 2 years.*

**Maximum 2 exhibits per lot. Refer to pages 4-6 for full submission information.**

### Crochet & Knitting

Lot J210 Crochet, hat or scarf

Lot J211 Crochet, Plushie (any size)

Lot J212 Crochet, any other crocheted item

Lot J213 Knitting, hat or scarf

Lot J214 Knitting, Plushie (any size)

Lot J215 Knitting, any other knitted item



### **Best of Show Rosette and Special Award**

Prairie Road Yarn • [www.prairieroadyarn.com](http://www.prairieroadyarn.com)  
3101 W. 41st St., Suite 115, Sioux Falls, SD 57105  
605-271-1577 • [hello@prairieroadyarn.com](mailto:hello@prairieroadyarn.com)  
will award the Outstanding Exhibit in  
(Crochet & Knitting - Jr.) a **\$30 gift certificate.**

[prairieroadyarn.com](http://prairieroadyarn.com)



## Class 18

### JUNIOR SEWING BAZAAR

*Remember exhibits MUST have been made within the last 2 years.*

**Maximum 2 exhibits per lot. Refer to pages 4-6 for full submission information.**

### Junior Quilts (Follow quilting instructions from page 8)

Lot J300 Quilt, any size

Lot J301 Quilted wall hanging

Lot J302 Quilted pillow



### **Best of Show Rosette and Special Award**

Always Your Design  
[www.facebook.com/alwaysyourdesign](https://www.facebook.com/alwaysyourdesign)  
335 E. 4th St., Dell Rapids, SD 57022  
605-428-4545  
will award the Outstanding Exhibit in  
(Junior Quilts) a **Product Package worth \$75.**

[facebook.com/always  
yourdesign](https://facebook.com/alwaysyourdesign)



## ----- JUNIOR SEWING BAZAAR - Section 2 -----

### Junior Clothing & Constructed Articles

- Lot J320 Any sewn article of clothing
- Lot J321 Doll quilt or clothes
- Lot J322 Pillowcase
- Lot J323 Potholders, set of 2
- Lot J324 Fabric painting
- Lot J325 Stuffed toy
- Lot J326 Decorated sweatshirt/t-shirt
- Lot J327 Pillow
- Lot J328 Apron
- Lot J329 Any other sewn item not mentioned above



**Best of Show Rosette and Special Award**  
Fonder Sewing Machine Co. [www.fondersewing.com](http://www.fondersewing.com)  
2130 W. 41st St., Sioux Falls, SD 57105  
605-332-3821  
will award the Outstanding Exhibit in  
(Jr. Clothing & Constructed Articles) a **\$100 Gift Card.**

fondersewing.com



## Class 19

### JUNIOR ARTWORK

*All Artwork MUST be completed by non-professional artists and done within the last two years. Frames are optional. No advertising allowed.*

***Maximum 2 exhibits per lot. Refer to pages 4-6 for full submission information.***



### **!!! NOTICE !!!**

*Due to issues in the past, **Wall art MUST be structurally sound and capable of enduring two weeks of display, secured with appropriately strong picture wire, attached by the exhibitor.***

*Submissions not ready to hang may be docked one group placement or disqualified.*

- Lot J400 Watercolor (Wall Art must follow hanging instructions above)
- Lot J401 Oil or acrylic (Wall Art must follow hanging instructions above)
- Lot J402 Sketch, pencil or charcoal (Wall Art must follow hanging instructions above)
- Lot J403 Chalk (Wall Art must follow hanging instructions above)



Lot J404 Marker, ink (Wall Art must follow hanging instructions above)

Lot J405 Collage (Wall Art must follow hanging instructions above)

Lot J406 Mixed medium (Medium meaning paint or art material) (Wall Art must follow hanging instructions above)

Lot J407 Any other art not mentioned above (Wall Art must follow hanging instructions above)

### ARTS CENTER



siouxiempirefair.com/p/sioux  
empirefair/arts-center

The Artwork (Junior) sponsor for the  
Best of Show award is in the final stages of  
confirmation. We look forward to announcing  
their support soon!

For the sponsorship updates please watch our  
webpage and Facebook page by scanning the  
QR Codes or visiting the provided links.



www.facebook.com/sefartscenter

## Class 20

### JUNIOR PHOTOGRAPHY

*All photos MUST be 8"x10" or 8"x12" and mounted on 10"x14" plain black or white 1/4-inch foam core board. (A limited number of White 10"x14" boards are available at the fair office for \$2 (605-367-7178). Pickup: Mon–Thu 9–4, Fri 9–2.) Incorrect photo or board sizes will be disqualified. Loose mounting will be docked one ribbon placing. No matting, frames, matte board, watermarks, or advertising. Attach Entry Tag with Scotch tape to upper left corner; write lot description from Premium Book. No plastic covering needed; displays will be protected after judging. And all photos MUST be taken within the last 2 years.*

**Maximum 2 exhibits per lot. Refer to pages 3-5 for full submission information.**

#### Junior Color

Lot J500 Landscape

Lot J501 Skyscape

Lot J502 Still life/abstract

Lot J503 Macro (taken at less than 1 foot)

Lot J504 People

Lot J505 Action

Lot J506 Architecture

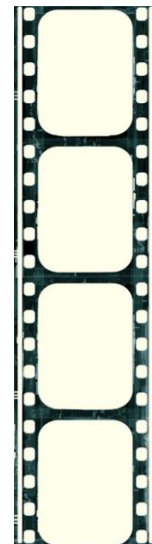
Lot J507 Flora

Lot J508 Animals

Lot J509 South Dakota

Lot J510 Digitally manipulated – attach original picture

Lot J511 Any other color photo not mentioned above





haroldspphoto.com



# HAROLD'S

## **Best of Show Rosette and Special Award**

Harold's Photo Centers • [www.haroldspphoto.com](http://www.haroldspphoto.com)

912 W. 41st St., Sioux Falls, SD 57105 • 800-568-6619

will award the Outstanding Exhibit in (Color Photography Jr.) a **\$50 gift certificate.**

### **Junior Black & White**

Lot J513 Landscape

Lot J514 Skyscape

Lot J515 Still life/abstract

Lot J516 Macro (taken at less than 1 foot)

Lot J517 People

Lot J518 Action

Lot J519 Architecture

Lot J520 Flora

Lot J521 Animals

Lot J522 South Dakota

Lot J523 Digitally manipulated – attach original picture

Lot J524 Any other black and white photo not mentioned above



haroldspphoto.com



# HAROLD'S

## **Best of Show Rosette and Special Award**

Harold's Photo Centers • [www.haroldspphoto.com](http://www.haroldspphoto.com)

912 W. 41st St., Sioux Falls, SD 57105 • 800-568-6619

will award the Outstanding Exhibit in (B&W Photography Jr.) a **\$50 gift certificate.**

## **Class 21**

### **JUNIOR BAKED GOODS**

***NO BAKED GOODS NEEDING REFRIGERATION ALLOWED EXCEPT FOR CHEESECAKE***

*All baked goods should be submitted on a Styrofoam or white paper plate, with the Entry Tag stapled to the right side and placed in a plastic zip lock bag, unless otherwise noted. \*Note: If submitting two different exhibits in one lot, the submissions must be made with different recipes.*

***Recipes must accompany exhibits as they are part of the judging.***

***Maximum 2 exhibits per lot. Refer to pages 4-6 for full submission information.***

## Cakes & Bread

Lot J600 Cake, any cake (Full cake)

Lot J601 Cupcakes (2)

Lot J602 White bread (Full loaf)

Lot J603 Dark bread (Full loaf)

Lot J604 Sweet rolls (2)

Lot J605 Buns or dinner rolls (2)

## Cookies & Bars

Lot J606 Oatmeal cookies (2)

Lot J607 Chocolate chip cookies (2)

Lot J608 Sugar cookies (2)

Lot J609 Bar cookies, unbaked (2)

Lot J610 Bar cookies, baked (2)



## Quick Breads & Misc.

Lot J611 Banana bread (Full loaf)

Lot J612 Muffins (2)

Lot J613 Any other quick bread (Full loaf)

Lot J614 Pie, any kind (Individual size pie)

Lot J615 Cheesecake (Any flavor, mini or personal sized)

Lot J616 Any other baked good not mentioned above

## Contest

J620 Junior Dessert Imposter – Theme “Nacho Average Contest”



## Fleet Farm. Jr. Dessert Imposter “Nacho Average Contest” LOT J620

1. For ages 18 and under
2. Exhibit must use dessert ingredients to create a Nacho-looking dish
3. No Whipped Cream or refrigerated components allowed
4. Exhibit must have an Entry Tag and be submitted under LOT J620 on the Submission Form, submitted on 7/30/25 (12PM-7PM)
5. Exhibits will be judged the next day and displayed in a case
6. The winner will receive a Baking Prize Package from Fleet Farm

Due to the nature of some ingredients, including fruit, they may start to attract pests. The Arts Center reserves the right to discard exhibit, or exhibit components, at anytime AFTER judging, if an issue arises.




### Best of Show Rosette and Special Award

Hy-Vee • [www.hy-vee.com](http://www.hy-vee.com)  
customer@hy-vee.com • 515-267-2800  
will award the Outstanding Exhibit in  
(Baked Goods - Jr.) a **\$50 gift card.**



**More contests may be added. Keep an eye on our Facebook page and webpage.**




**4th Annual Oh My Cupcakes! Cupcake Decorating Contest**  
**Wednesday, August 6th, 2025**

Winners will receive 12 "1 Free Regular Cupcake" Tokens from Oh My Cupcakes!

**Age Groups & Times**

6-9 y/o	10:30AM	-	10-14 y/o	11:00AM
15-40 y/o	11:20AM	-	40+ y/o	11:40AM

See the contest form at the end of the book or scan this QR code to register today



[siouxempirefair.com/f/48](http://siouxempirefair.com/f/48)

## **Class 22**

### **JUNIOR FOOD PRESERVATION**

*Exhibits of canned goods must be in standard clear glass jars. Jelly must be in standard jelly glasses. See headings for each department. Attach label to each jar stating if it was processed by hot water bath or pressure canner, and for how long. Jars sealed with paraffin will not be accepted. Jars must have rings. Refer to the Ball Blue Book for more canning information.*

*Remember, exhibits **MUST** be made within the last 2 years.*

***Maximum 2 exhibits per lot.** Refer to pages 4-6 for full submission information.*

**\*\*NEW LOT J724 Any Other Freeze Dried Item Not Mentioned\*\***

#### **Canned Goods**

Lot J700 Fruit (identify)

Lot J701 Beans

Lot J702 Tomatoes

Lot J703 Carrots

Lot J704 Pickles

Lot J705 Meats (identify)



Lot J706 Jelly or Jam (identify)

Lot J707 Applesauce

Lot J708 Salsa

Lot J709 Any other canned item not mentioned above (identify)

### **Dried Food**

Lot J720 Dehydrated foods

Lot J721 Freeze dried fruit (identify)

Lot J722 Freeze dried vegetable (identify)

Lot J723 Freeze dried candy or treat (identify)

Lot J724 Any other freeze dried item not mentioned above (identify)

fleetfarm.com



# **Fleet Farm®**

**Best of Show Rosette and Special Award**

Fleet Farm • [www.fleetfarm.com](http://www.fleetfarm.com)

3035 W Fleet Street Sioux Falls, SD 57107 • (605) 444-7200

will award the Outstanding Exhibit in

(Food Preservation - Jr.) a **\$100 gift card.**



## **Class 23**

### **JUNIOR FLORICULTURE**



*All specimens in the floriculture class MUST be grown by the exhibitor. Exhibitors must furnish a clear glass container for each specimen they show. No foliage in the water. Foliage/stem does not need to be attached.*

*Specimens must be uniform.*

***Maximum 2 exhibits per lot. Refer to pages 4-6 for full submission information.***

### **Annuals & Perennials**

Lot J800 Asters, single or double, 3 stems (don't mix)

Lot J801 Bachelor's buttons, 3 stems

Lot J802 Begonias, 1 plant

Lot J803 Bells of Ireland, 1 stem

Lot J804 Calendula, 3 stems

Lot J805 Cacti, 1 plant

Lot J806 Coleus, 1 potted plant

Lot J807 Cosmos, 3 stems  
Lot J808 Cockscomb, 1 stem  
Lot J809 Dahlias, 3 stems of small blooms or 1 stem of bloom over 4"  
Lot J810 Daisies, 3 stems  
Lot J811 Geraniums, 1 potted plant  
Lot J812 Gladiolus, 1 spike any color  
Lot J813 Sunflowers, 1 stem, large or small  
Lot J814 Impatiens, 1 plant  
Lot J815 Ivy, potted, any kind  
Lot J816 Larkspur, 3 stems  
Lot J817 Lilies, 1 stalk  
Lot J818 Marigolds, 3 blooms  
Lot J819 Pansies, 5 stems  
Lot J820 Petunias, single or double, 3 stems  
Lot J821 Roses, 1 bloom  
Lot J822 Snapdragons, 3 stems  
Lot J823 Zinnias, 3 stems  
Lot J824 Any other flower not mentioned above, 1 stem

### **Planters**

Lot J825 Wall planter  
Lot J826 Table planter  
Lot J827 Wildflowers in a collection  
Lot J828 Houseplant  
Lot J829 Succulent, 1 plant  
Lot J830 Hanging plant  
Lot J831 Fairy Garden  
Lot J832 Any other potted or houseplant not mentioned above



### **Best of Show Rosette and Special Award**

Oakridge Nursery & Landscaping Inc. • [www.oakridgenurseryinc.com](http://www.oakridgenurseryinc.com)

2217 S. Splitrock Blvd., Brandon, SD 57005

605-582-6565

will award the Outstanding Exhibit in  
(Junior Floriculture) a **\$40 Gift Card.**

[oakridgenurseryinc.com](http://oakridgenurseryinc.com)



## **Class 24**

---

## **JUNIOR HORTICULTURE**



*Include variety on Entry Tag. Submit on a white Styrofoam or paper plate, with the Entry Tag stapled to the right side. Follow exhibiting guidelines found in the “Preparing Horticultural Exhibits” from SDSU Extension.*

<https://extension.sdstate.edu/sites/default/files/2019-06/P-00120.pdf>

**Maximum 2 exhibits per lot.**

*Refer to pages 4-6 for full submission information.*



- Lot J900 Beans, green or yellow (5)
- Lot J901 Beets (3)
- Lot J902 Cabbage (1)
- Lot J903 Carrots (3)
- Lot J904 Corn (3 ears) lightly wrapped in plastic
- Lot J905 Cucumbers (1 large or 3 small)
- Lot J906 Gourds (1 large or 3 small)
- Lot J907 Muskmelon (1)
- Lot J908 Onions, any kind (3)
- Lot J909 Peppers (1 large or 3 small)
- Lot J910 Potatoes, any kind (3)
- Lot J911 Pumpkin, any size (1)
- Lot J912 Squash, any type (1)
- Lot J913 Tomatoes, red or yellow (1)
- Lot J914 Tomatoes, cherry or grape (3)
- Lot J915 Watermelon (1)
- Lot J916 Herbs, any (identify on entry tag) (1 of dill, 3 of all others)
- Lot J917 Any other vegetable not mentioned above (1 large or 3 small)
- Lot J918 Novelty vegetable – Mother Nature’s comic vegetable
- Lot J919 Novelty vegetable – Largest
- Lot J920 Novelty vegetable – Smallest (fully ripened)
- Lot J921 Collection, not less than 7 vegetables in a basket
- Lot J922 Mr. Potato Head (real potato, decorate with your own items)
- Lot J923 Apples, any variety (3) identify variety
- Lot J924 Grapes, 3 clusters
- Lot J925 Pears (3)
- Lot J926 Plums (6)
- Lot J927 Raspberries (10)
- Lot J928 Strawberries (10)
- Lot J929 Collection, not less than 7 fruits in a basket
- Lot J930 Any other fruit not mentioned above





cliffavegreenhouse.com



**Best of Show Rosette and Special Award**

Cliff Avenue Greenhouse & Garden Center

[www.cliffavegreenhouse.com](http://www.cliffavegreenhouse.com)

2101 E. 26th St., Sioux Falls, SD 57105

605-332-6641

will award the Outstanding Exhibit in  
(Junior Horticulture) a **\$50 gift certificate.**



## **End of Premium Book Lot List.**

If you ever have an idea of a lot that should be included, please email us with your suggestion. [sef.artscenter@yahoo.com](mailto:sef.artscenter@yahoo.com) We always want to know what our community is up to in order to widen our exhibit range.

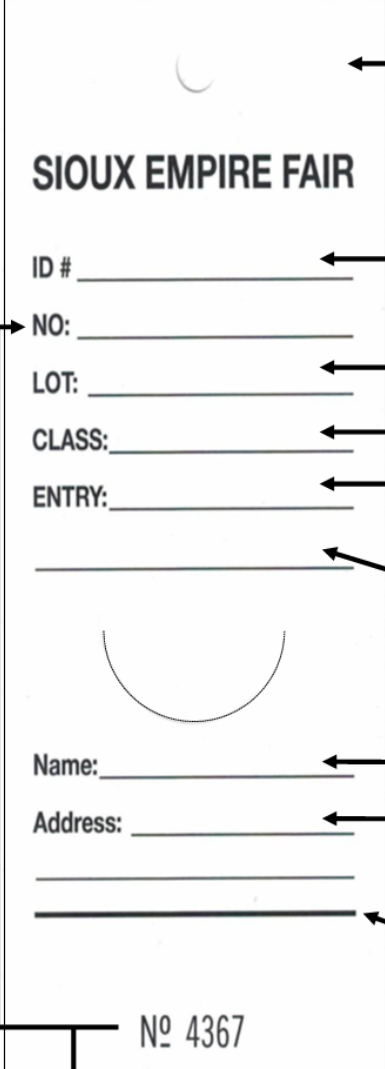
We would like to thank all our spectacular Special Award Sponsors for their participation in the 2025 Sioux Empire Fair Arts Center. Without them, we would not be able to offer Best of Show Awards for Outstanding Exhibits.

---





# How to fill out an Entry Tag

 <p><b>SIOUX EMPIRE FAIR</b></p> <p>ID # _____</p> <p>NO: _____</p> <p>LOT: _____</p> <p>CLASS: _____</p> <p>ENTRY: _____</p> <p>_____</p> <p>Name: _____</p> <p>Address: _____</p> <p>_____</p> <p>_____</p> <p>No 4367</p>	<p>← Juniors (18-), write your age in the top righthand corner. Seniors (65+), write an "S", and all others write an "A"</p>
	<p>← This is your Exhibitor Number. Reuse your ID# from 2020 and on if you have one. If not, you can be issued one</p>
	<p>← Write your exhibit's Lot Number</p>
	<p>← Write the Class <u>Number</u> the Lot is in</p>
	<p>← Write the Lot description as it is worded in the Premium Book</p>
	<p>← This line is for requested details only. For Horticulture, add the Variety of plant. For Photography, add the Headline for the Positive Journalism photo</p>
	<p>← Write in your name, and <b>CITY and STATE ONLY!</b> For exhibitor security, NO house numbers or street names</p>
	<p>← <b>Fold line</b></p>

Each Entry Tag has a different printed number. If it is not already duplicated on the No: line, please write it in.

**At submission, each Entry Tag must be completed as directed.**

The lower portion of the tag is to be folded toward you, along the thicker black line, and tucked into the half circle slit, to conceal the exhibitor's identity for impartial judging.

**Example of completed Entry Tag**

11

**SIOUX EMPIRE FAIR**

ID # 0001

NO: 4367

LOT: J900

CLASS: 24

ENTRY: Beans, Green (5)  
Bush Blue Lake 47

Name: Jane Doe

Address: Sioux Falls, SD

\_\_\_\_\_

\_\_\_\_\_

No 4367



## South Dakota State Fair County Best of Shows

While it is called “County Best of Shows,” the South Dakota State Fair categories & divisions vary from ours. They do not accept perishable or antique exhibits, but they have 3 age divisions to enter, compared to our 2.

Many of our Best of Show exhibits will qualify to move on to State Fair, but others may be too grand to fit in the State Fair’s Best of Show booth. When that happens, alternate qualifying exhibits from the list below will be selected to proudly represent the Sioux Empire community in Horizons Hall at the 2025 South Dakota State Fair.

Exhibitors with items up for consideration will be notified and can accept or decline the honor to show at the State Fair. A representative from the Sioux Empire Fair will deliver the exhibits to the State Fair and bring them back afterward. Exhibits must be picked up from the Sioux Empire Fair office upon return from State Fair. Participants will be given more info on pick up instructions.

Attention & care will be given in the transport of the exhibits, but the Sioux Empire Fair Association Inc. and staff cannot not be held responsible for loss or damage due to any unforeseen incidents.

### **The areas available for entry at State Fair include:**

#### **Division 1 – Adult Division**

1. Art, Any Medium
2. Canning, jellies/jams, pickles (one-half pint clear glass jar)
3. Child’s garment
4. Craft
5. Needlework – cross stitch, embroidery, knit, etc.
6. Quilted Wall hanging or pillow, any method
7. Photography

#### **Division 2 – Junior Division**

(18 years old & younger)

1. Art, Any Medium
2. Canning, jellies/jams, pickles (one-half pint clear glass jar)
3. Child’s garment
4. Craft
5. Needlework – cross stitch, embroidery, knit, etc.
6. Quilted Wall hanging or pillow, any method
7. Photography

#### **Division 3 – Work of Senior**

(Must be 65 years of age or older)

1. Art, Any Medium
2. Canning: jellies/jams, pickles (one-half pint clear glass jar)
3. Child’s garment
4. Craft
5. Needlework – cross stitch, embroidery, knit, etc.
6. Quilted Wall hanging or pillow, any method
7. Photography

#### **2025 Horizons Hall Exhibitor Handbook for the South Dakota State Fair**

See pages 34-35 for Department 379  
County Fairs Best of Show



**NOTE: THE WOMEN’S BUILDING AT THE STATE FAIR  
HAS BEEN RENAMED HORIZONS HALL**





# Arts Center Volunteer Form

Running an Arts Center is a BIG job and we can't do it alone. We're looking for fun volunteers who'd like to be a part of the magic. Volunteers should be likeminded in that we all aim to provide the best experience for the exhibitors and fairgoers.

**SIOUX EMPIRE FAIR**  
**W.H. LYON FAIRGROUNDS**  
**100 N. Lyon Blvd.**  
**SIOUX FALLS, SD 57107-0289**  
**Phone: 605-367-7178**  
**Fax: 605-367-7886**  
**M-Th 9AM-4PM**  
**Friday 9AM-2PM**

**Volunteer tasks will involve various: Standing, Walking and/or Sitting for a few hours at a time (Breaks included). Depending on the day, it may also require some reading, writing, counting, alphabetizing, lifting (up to 20 lbs), bending, assisting with contests, checking in contestants and general fairgoer questions.**

If you love the fair, have a heart for the community, and want to make a difference, please contact the Arts Center Coordinator for more details.

[sef.artscenter@yahoo.com](mailto:sef.artscenter@yahoo.com)

Oh, and volunteers can still enter their own exhibits.

*Volunteers must be 18 yrs or older, and on the day of judging cannot volunteer in an area they have submitted an exhibit.*

(For contact purposes, PLEASE PRINT NEATLY, IT IS IMPORTANT SO WE CAN READ IT!)

Name \_\_\_\_\_ Area/s of Interest \_\_\_\_\_  
Email \_\_\_\_\_ Phone (\_\_\_\_) \_\_\_\_\_  
Address \_\_\_\_\_ City \_\_\_\_\_ State \_\_\_\_ Zip \_\_\_\_\_

I would like to volunteer to help during the following times (Mark all that apply):

\_\_\_ **Wednesday, July 30th 11:30AM-3:30PM** Exhibit Submission Day

Duties: Check in exhibits and take them to their respective lot areas

\_\_\_ **Wednesday, July 30th 3:30PM-7:30PM** Exhibit Submission Day

Duties: Check in exhibits and take them to their respective lot areas

\_\_\_ **Thursday, July 31st 8:30AM-3PMish** Judging of exhibits

Duties: Clerk for judges by writing comments, and tracking placements



**Please also circle any day & time you are available during the fair to help**

Aug. 2nd	Aug. 3rd	Aug. 4th	Aug. 5th	Aug. 6th	Aug. 7th	Aug. 8th	Aug. 9th
10AM-3PM	10AM-3PM	10AM-3PM	10AM-3PM	10AM-3PM	10AM-3PM	10AM-3PM	10AM-3PM
3PM-8PM	3PM-8PM	3PM-8PM	3PM-8PM	3PM-8PM	3PM-8PM	3PM-8PM	3PM-8PM

**Return your volunteer form to the fair office or scan and email it to the Arts Center coordinator at [sef.artscenter@yahoo.com](mailto:sef.artscenter@yahoo.com) as soon as possible to snag the date and time that works best for you.**

**Once your application is approved, you will be contacted with further details.**

**Thank you and we look forward to working with you.**



**EXHIBITOR  
CONTRIBUTOR  
AWARD**

**TSC TRACTOR  
SUPPLY CO.**



**Tractor Supply Co. & the Arts Center  
are teaming up to provide  
Exhibitor Contributor Awards  
to the adult and junior exhibitors who  
earn the most Blue Ribbons.**



**\$100  
Gift Card**

**Note:** Exhibits must be submitted on 7/30/25 between 12PM and 7PM, and follow all the rules listed in the 2025 Premium Book. Exhibitors' blue ribbons will be tallied and the adult and junior exhibitors who earned the most blue ribbons in 2025 will be awarded a \$100 Gift Card to Tractor Supply Co. The winners will be notified by email (if an email is provided). The winners will be able to pick up their prize with their exhibits on 8/10/25 between 10AM and 4PM. Any prizes not retrieved will be forfeited.

# Space saved for another contest

We are confirming details with the sponsor.  
The contest will be announced shortly. Keep an eye  
on our Facebook Page and Webpage for updates.



[siouxempirefair.com/p/siouxempirefair/arts-center](http://siouxempirefair.com/p/siouxempirefair/arts-center)



OR



[www.facebook.com/sefartscenter](http://www.facebook.com/sefartscenter)

# SODALUG DISPLAY

At the 2025 Sioux Empire Fair Aug. 2nd-9th



The members of SODALUG are sharing their creations at the Sioux Empire Fair Arts Center this year. Come catch a glimpse of the wonderful light up displays the group creatively built for your enjoyment and amazement.

Scan for  
club  
details



sodalug.net

# GUESSING GAME CONTESTS

The Sioux Empire Fair Arts Center is hosting a fresh round of guessing games during the fair, thanks to our amazing local sponsors. Come give us your best guess at how many pieces are in each display for a chance to win gift cards from Tractor Supply Co.

or Bricks & Minifigs.

One guess per contest per day.







# KING ARTHUR BAKING CO.

## 2025 Baking Contest

Sat., August 2nd 2025 Submission 10AM – 11:50AM

The contest takes place in the Arts Center of the Sioux Empire Fair, and it is FREE for anyone to enter their age group.



### Youth Contest (ages 6-17) - Cut-Out Sugar Cookies

1st Place: \$40 King Arthur Baking Co. Gift Card  
2nd Place: \$25 King Arthur Baking Co. Gift Card  
3rd Place: King Arthur Baking Co. Tote Bag



### Adult Contest (ages 18+) - Any Flavor Muffin

1st Place: \$75 King Arthur Baking Co. Gift Card  
2nd Place: \$50 King Arthur Baking Co. Gift Card  
3rd Place: \$25 King Arthur Baking Co. Gift Card

Contestants will need to pre-register by August 1st 2025, so we can send you a confirmation email. Outside food is not allowed in the fair, so you may need the confirmation email at the gate to confirm your participation in our contest.

#### Submission Guidelines:

1. All baked goods **MUST** be the sole work of the contestant, submitted in a covered container and on a disposable dish or tray, along with **the UPC code from the bag of King Arthur Flour** that was used.

2. Be sure to submit your entry with your confirmation email **AND** the full, legible recipe. Do not include your name in the recipe or title.

**For Cut-Out Sugar Cookies:** Submit two Cookies closest in color and size (2").

**For Muffins:** Submit two regular sized muffins. (Any Flavor)

Judging will take place in the afternoon, and the winners will be emailed.

We will also announce the winners on Facebook and place the winning entries in the contest case with a sign announcing the placements.



If mailing your registration, print this form & assure it arrives by 7/29/25



To register online, visit our website or scan our QR code



### Submission Form for King Arthur Baking Co. Baking Contest

Contestant Name: \_\_\_\_\_

Address: \_\_\_\_\_

E-mail: \_\_\_\_\_ Phone: \_\_\_\_\_

Recipe Name: \_\_\_\_\_

Circle your contest: Adult / Junior

Please assure your **mailed** form arrives by 7/29/25, to the address below. We'll confirm by email.

**W.H. Lyon Fairgrounds, Attn: Arts Center, 100 N. Lyon Blvd., Sioux Falls, SD 57107**







Luminary Fiberworks

HANDMADE IN  
SOUTH DAKOTA

# Spin & Crochet Day

**Saturday 8/2nd from 2pm-5pm**

**In the Arts Center of the Sioux Empire Fair**

Because sheep don't come like this, wool has to be processed. Join us in the Arts Center to watch April, from Luminary Fiberworks, spin wool into gold... I mean yarn.

While you're there, catch a glimpse of Anna, from Knotty Flowers, at work crocheting the day away. Pay attention, cause once she gets going, there's no slowing her down.

**KNOTTY**  
FLOWERS

Active Generations' Line Dancers are returning to the Arts Center of the Sioux Empire Fair for another Active Event!

**Active**  
Generations



**Anyone can join in!**

**Active Generations' Active Event**

**August 5th, 2025 from 2PM-4PM**

Come join in on the fun, and try your hand at some of the fun games provided by Active Generations.

**Free Ice Water** at the ready too!



**First National Bank**  
The First National Bank in Sioux Falls®



# Paint-A-Piggy-Bank Contest!

**Tuesday, August 5th 2025 10AM until 1:30PM**

**For ages 8-12**

Courtesy of First National Bank, the winner will receive a **\$25** cash prize to start their savings in their Piggy Bank!!

All contestants will receive **\$2** in nickels to start their savings!



## How to Enter:

1. Open to ages 8–12 at no cost.
2. Pre-registration is highly recommended—banks are limited.
3. After registering, you'll receive an important confirmation email, if banks are still available.
4. Bring a printed copy of your confirmation to the Arts Center between 10AM–12PM on 8/5/25 to check in and claim your bank.
5. Banks will be held until 12PM sharp on 8/5/25. After that, unclaimed banks may go to walk-ins.

## Contest Rules:

- One piggy bank per contestant.
- After check-in, pick an open seat—we'll bring you your bank & painting supplies. (Remember, judges love a good clean effort!)
- When finished, notify a staff member to ensure your name stays with your bank.
- Finished banks will be displayed at the Arts Center for the duration of the fair. (Pick-up is on **8/10/25 from 10AM–3:30PM at the same location**. If unable to pick up at that time, make arrangements with the coordinator. Unclaimed banks will be discarded. We do not want that!)
- Banks will dry overnight and be judged on 8/6/25 by a First National Bank representative. The winner will be notified by email, announced on Facebook, and recognized in the display case.

Register online here



Or mail in this form

## Entry Form for First National Bank: Paint-A-Piggy-Bank Contest



Name: \_\_\_\_\_ E-mail: \_\_\_\_\_

Address: \_\_\_\_\_ Age: \_\_\_\_\_ Phone: \_\_\_\_\_

**PRINT CLEARLY** so we can process your registration. If mailing this form, it must arrive by 7/29/25 so we can email you a confirmation for check-in.

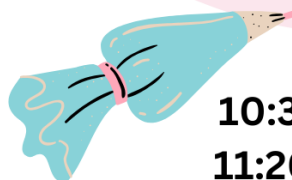
**W.H. Lyon Fairgrounds, Attn: Arts Center 100 N. Lyon Blvd., Sioux Falls, SD 57107**



# Oh My Cupcakes! 2025 Youth & Adult Cupcake Decorating Contest



GOURMET CUPCAKERY



**Wednesday, August 6th 2025**

**10:30AM** for 6-9 yrs. - **11AM** for 10-14 yrs.

**11:20AM** for 15-40 yrs. - **11:40AM** 41+ yrs.



**That's right, it's not just for kids anymore!**

**Oh My Cupcakes! has opened up two more contests for adults.**

The winners will receive **1 Dozen Free Cupcake Tokens** from Oh My Cupcakes!

It is **FREE** to enter. Pre-registering early online is highly recommended as contestant slots are limited. All registered contestants should check in 15 minutes before their contest at the Arts Center Contest Corner, located at the NW corner of the Expo's North Room. You will need to bring your confirmation email with you for check in. If there are registered contestants who do not show up, we will offer openings to the audience on a first-come first-serve basis.

#### **Contest Process:**

Contestant will be given a plain cupcake, a piping bag with icing in it, and their own sprinkles. They will have 8 (Eight) minutes, from the start of the clock, to decorate their cupcake. When time is up, they must stop decorating. The cupcakes will be judged immediately and the winner will be announced. All contestants may keep their own cupcake as a prize.

#### **Further Notes:**

1. **ABSOLUTELY NO EATING ICING FROM THE PIPING BAGS!**
2. Listen & follow all directions. (Any contestant not following the rules may be disqualified.)
3. Have fun and let your imagination run wild.
4. The Arts Center and Oh My Cupcakes! reserve the right to adjust any contests if needed.

Scan our  
QR code  
to register  
today



siouxempirefair.com/t/48



Or fill out  
this form &  
mail it to the  
fair office

#### **Entry Form for 8/6/25 Oh My Cupcakes! Cupcake Decorating Contest**

Contestant Name: \_\_\_\_\_

Check One: ☐ 6-9 Age Group Contest ☐ 10-14 Age Group Contest  
☐ 15-40 Group Contest ☐ 41 & Above Group Contest

Address: \_\_\_\_\_

E-mail: \_\_\_\_\_ Phone: \_\_\_\_\_

**Please PRINT CLEARLY** so we can process your registration

If mailing registration, please assure it arrives by 7/29/25 so we can email you a confirmation.

**Sioux Empire Fair, Attn: Arts Center, 100 N. Lyon Blvd., Sioux Falls, SD 57107**



# BRICKS & MINIFIGS®



bricksandminifigs.com



sodolug.net

## BUILD YOUR BRICKS SURPRISE THEME CHALLENGE!

### WEDNESDAY 8/6/25

<b>12:30PM</b>	<b>AGE GROUP 6-9</b>	<b>1ST-\$50 2ND-\$25 3RD-\$10</b>
<b>1:05PM</b>	<b>AGE GROUP 10-14</b>	<b>1ST-\$50 2ND-\$25 3RD-\$10</b>
<b>6:30PM</b>	<b>AGE GROUP 15 &amp; UP</b>	<b>1ST-\$50 2ND-\$25 3RD-\$10</b>



**WHO CAN ENTER:** IT IS FREE FOR ANYONE TO ENTER THEIR AGE GROUP.

**WHEN TO BE THERE:** CHECK IN 15 MINUTES BEFORE YOUR CONTEST START TIME.

**WHERE IS IT:** CONTEST CORNER IN THE ARTS CENTER, LOCATED IN THE EXPO'S NORTH ROOM.

**WHY ENTER:** BECAUSE IT'S FUN, AND YOU COULD WIN ONE OF THE GIFT CARD PRIZES TO BRICKS & MINIFIGS.

#### WHAT YOU WILL NEED:

1. YOU WILL NEED TO PRE-REGISTER BY 7PM ON AUG. 5TH, SO WE CAN SEND YOU A CONFIRMATION EMAIL NEEDED FOR CHECK IN. WALK-INS MAY BE ACCEPTED IF THERE IS ROOM.
2. NO BRICKS NEEDED, JUST YOUR "ON THE SPOT" CREATIVITY.

#### CONTEST PROCESS:

AFTER CHECK-IN, CONTESTANTS WILL CHOOSE AN AVAILABLE STATION WHERE THEY WILL BE PROVIDED BRICKS TO USE FOR THE CONTEST.

CONTESTANTS WILL BE INFORMED OF THE CHALLENGE THEME AT THE SAME TIME.

CONTESTANTS WILL BE GIVEN 20 MINUTES (30 MINUTES FOR 15 & UP) TO CREATE A BUILD BASED ON THE SURPRISE THEME.

WHEN TIME'S UP, THE JUDGES WILL DELIBERATE AND THEN WE WILL ANNOUNCE THE WINNERS.

THE WINNERS WILL BE CHOSEN BASED ON CREATIVITY, INNOVATION, & ORIGINALITY.



SCAN OUR QR CODE  
AND REGISTER TODAY:



siouxempirefair.com/f746

OR REGISTER BY MAIL

#### Bricks & Minifigs: Build Your Bricks Surprise Theme Challenge!

Print Contestant Name: \_\_\_\_\_ Age: \_\_\_\_\_

Address: \_\_\_\_\_

E-mail: \_\_\_\_\_ Phone: \_\_\_\_\_

Please **PRINT CLEARLY** so we can read it

If mailing in this registration form, please make sure it arrives by 7/29/25 so we can email you a confirmation for check-in.

W.H. Lyon Fairgrounds, Attn: Arts Center, 100 N. Lyon Blvd., Sioux Falls, SD 57107





# FRENCH FRY STACKING CONTEST



Friday, August 8th 2025 @ 2:30PM Youth Contest (ages 8-15)

Saturday, August 9th 2025 @ 2:30PM Adult Contest (ages 16+)



It is **FREE** for anyone to enter their age group.

And the winner of each contest will receive a **\$40** voucher to  
Taulelle Concessions at the 2025 Sioux Empire Fair.

Contestants will need to pre-register by noon of the day of their contest, so we can send a confirmation email needed at check-in. Contest takes place in the Arts Center of the Sioux Empire Fair, and spots are limited, so register early to secure your place among the Spuds!

## Contest Process:

1. Contestants are to check in 15 minutes before their contest starts, and they will be able to choose an available station.
2. Contest will start after fries are delivered and run for 6 minutes.
3. At any time, a contestant can say, "Done" if they feel they cannot stack it any higher without it tipping.
4. The ruler will be handed to the contestant to carefully hold next to their stack as the staff takes a picture.
5. Towers are judged on height alone. How you build it is up to you.

## THE NUMBER ONE RULE: NO BUMPING THE TABLE!!

Whether on purpose or accident, it can disqualify you. So, be careful of your hips and waist, and try not to lean over the table too much.

If mailing your registration, assure  
that this form arrives by 7/29/25

To register online, visit our website  
or scan our QR code →



## Submission Form for Taulelle Concessions: French Fry Stacking Contest

Contestant Name: \_\_\_\_\_

Address: \_\_\_\_\_

E-mail: \_\_\_\_\_ Phone: \_\_\_\_\_

Choose one:      Adult Contest (16+) ☐      Junior Contest (8-15) ☐

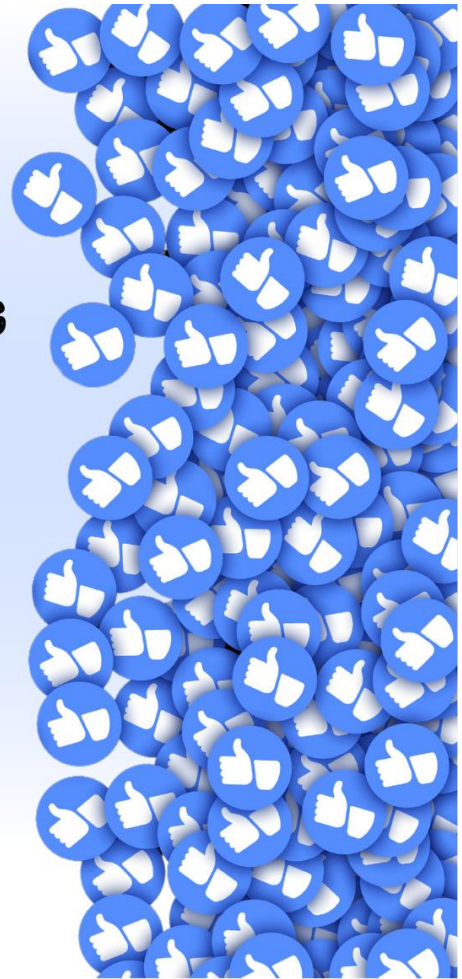
Please assure your form arrives by 7/29/25, to the address below. We will confirm by email.

**W.H. Lyon Fairgrounds, Attn: Arts Center, 100 N. Lyon Blvd., Sioux Falls, SD 57107**





Like and follow us on Facebook to stay up to date on all the exhibit, contest, activity and giveaway details. All of our contest winners will also be announced on Facebook. We look forward to seeing you there and at the fair.



## SIoux-EMPIRE-FAIR



## ARTS-CENTER

The Arts Center's goal is to honor and celebrate our fantastic community's creative talents. We know there's more out there, so please help us spread the word by encouraging your family and friends to submit their best exhibits for us to showcase for them at the Sioux Empire Fair!

You made it to the end. Thank you for reading through the 2025 Sioux Empire Fair Arts Center Premium Book. We'll see you on Submission Day (July 30th) with all your exhibits!