

Fiber Arts Competition Handbook

Knitting, Crochet, Needlework, Handspun Yarn, Rug Hooking, Felting, Weaving, Basket Weaving, Surface Design, Sewing and Quilting

For more information, contact
Lorie Stinson, CFE
Exhibits and Special Events Manager
Phone: (561) 790-5245
Email: lorie@southfloridafair.com

IMPORTANT DATES

Online or Paper Entry Form deadline

Friday, Dec. 30, 2022

Deliver items to Building 3 at the South Florida Fair (see Page 8)

Items exhibited

Jan. 13-29, 2023

Entry pick up

Monday, Jan. 30, 2023

9 a.m. – 5 p.m.

Competition Overview

Entry Fee: FREE

General Rules – Page 7

How to enter online – Page 8

Paper entry form - Page 9

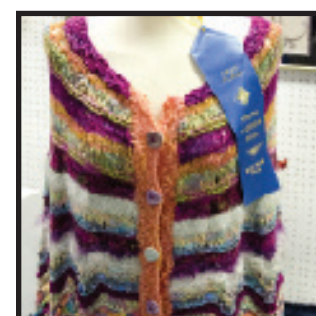
Exhibitors are encouraged to read this handbook in its entirety.

Eligibility

The Fiber Arts Adult Divisions are open to all Florida residents ages 18+ and youth First Grade and up.

Divisions – Fiber Arts, Sewing and Quilting Competition

- Fiber Arts – Page 3
- Sewing – Page 3
- Quilting – Page 4



Entry Rules

- Due to space limitations, no more than six (6) items per person in each division may be submitted for judging, however there is no limit to the number of pieces per class. **For example: An exhibitor can enter up to six (6) items in Knitting and up to six (6) items in Crochet.**
- Work must be of the artist exhibiting; no teacher assisted work.

GENERAL ENTRY RULES

- Entries previously exhibited in the South Florida Fair are not permitted for entry.
- Entries must have been prepared/made/processed by the exhibitor in whose name they are entered.
- In keeping with the South Florida Fair's family orientation, nudes or items of an offensive, controversial or objectionable nature or subject matter will not be accepted.
- Entries completed by two (2) or more individuals are permitted, but will be counted as one (1) exhibitor (the individual who entered online).

Judging and Awards

The Fair ensures that the judges we employ are knowledgeable in the division in which they are judging and will be impartial. Judges reserve the right to reassign entries to a more appropriate division or class. Judging will be done using a scorecard to assist in keeping decisions as objective as possible. ***The decision of the judge(s) is final.***

If, at the judge's discretion, an entry does not merit a placing, the judge shall give no award under any circumstance. This rule applies whether there is one or more exhibits in the class.

Awards Information

First Place – South Florida Fair Ribbon

Second Place – South Florida Fair Ribbon

Third Place – South Florida Fair Ribbon

Best of Show – South Florida Fair Ribbon and Premium Payment

Best of Show awards will be chosen from the first place winners in each division.

Judging Criteria

General Appearance

Construction

Workmanship

Design in relationship to yarn/ thread

Degree of Difficulty

Presentation

Fiber Arts - Divisions and Classes

Class Description

- **Handmade Lace – Class 1**
- **Embroidery – Class 2**
- **Counted Thread Embroidery – Class 3**
- **Needlepoint – Class 4**
- **Knitting – Class 5**
- **Crochet – Class 6**
- **Traditional Rug Hooking – Class 7**
- **Felting – Class 8**
- **Weaving – Class 9**
- **Basket Weaving – Class 10**

Sewing - Divisions and Classes

Class Description

- **Apparel (adults and children) – Class 1**
- **Home Décor (pillow, etc.) – Class 2**
- **Apparel Accessory (hat, scarf, etc.) – Class 3**
- **Costumes (of any kind) – Class 4**
- **Recycled Fashions – Class 5**

Quilts and Quilted Items – Divisions and Classes

A quilt information sheet must accompany your quilt when you deliver the quilt to the South Florida Fair.

Single Person: when your quilt is pieced, sewn and quilted by one person.

Appliqued: a quilt that at least 50 percent of quilt is appliqued

Art Quilt: a type of quilt that uses embellishments of any kind to enhance the quilt; this could include felting, painting, stenciling, thread art, etc.; at least 50 percent of quilt is quilted.

Embroidered: uses hand or machine embroidery stitches to decorate pieces; at least 50 percent of quilt is embroidered.

Quilted Household Items: include, table runners, Christmas tree skirts placemats, pillows, etc.

Sewing - Divisions

Adult Apparel - Division 1

Children's Apparel - Division 2

Special Occasion Apparel - Division 3

Home Décor and Accessories - Division 4

Cosplay Apparel - Division 5

Recycled Fashions - Division 6

Needlework - Divisions

All needlework must be complete and in a finished state, i.e. wall hangings must be ready to hang and framed pieces of needlework must be wire-strung and ready for hanging. Glass can be used to protect your piece. This is a competition and the finishing and presentation of your work is as equally important as the work itself.

Handmade Lace - Division 1

Embroidery - Division 2

Counted Thread Embroidery - Division 3

Needlepoint - Division 4

Materials

Acceptable Fibers:

Cotton, silk, rayon, wool, bamboo, metallics and blended fibers.

Acceptable Fabrics:

Cotton (for example, Aida, Hardanger, Muslin, etc.)

Evenweaves (for example Jobelan, Lugana, Tula, Jazlyn etc.)

Linen (for example Cashel, Belfast, Dublin, Edinburgh, etc.)

Custom or pre-made articles or garments (for example, doilies, banners, bibs, t-shirts, dish towels, table cloths etc.)

Knitting and Crochet - Divisions

Knitting - Division 5

Crochet - Division 6

Handspun Yarn - Divisions

Handspun Yarn - Division 7

Items Made from Handspun Yarn - Division 8

Other Fiber Arts - Divisions

Traditional Rug Hooking with Wool Fabric - Division 9

Felting - Division 10

Weaving - Division 11

Judging Criteria

Originality – 40 percent

Execution Quality – 40 percent

General Appearance – 10 percent

Degree of Difficulty – 10 percent

Basket Weaving – Divisions

Definitions

What is a basket? it's a functional container made of interwoven strips of pliable materials, either natural or manmade.

Basket Weaving - Division 12

Judging Criteria

General Appearance – 25 percent

Construction – 50 percent

Design – 25 percent

General Rules

Disclaimer

All competitive exhibits are entered at the exhibitor's risk. The South Florida Fair does not insure and is not responsible for any loss, damage, or theft of entries, even if the loss, damage, or theft occurs as the result of the handling of the exhibit by staff, volunteers, contractors and/or visitors. If the exhibitor desires insurance coverage, this coverage should be secured from a personal insurance agent prior to entry and the policy written to cover the period of exhibition and transportation. Reasonable care will be taken to prevent loss or damage to exhibits. Unauthorized persons are not permitted in the building after closing hours.

Division/Class Cancellation

The South Florida Fair reserves the right to return entries and cancel any division or class in which, in its judgment, the entries are insufficient to secure adequate competition.

Entry Errors

South Florida Fair is not responsible for finding errors in entries. Exhibitors are responsible for all errors which were submitted online or on entry and summary forms. No exhibitor shall be entitled to an award which has been disallowed as the result of his own error. The South Florida Fair shall withhold the payment of awards for exhibits that are ineligible and may recover awards that have been paid for ineligible entries that are disclosed during post audits of Fair records. However, exhibitors with cause are entitled to question the validity of any disallowance. Such exhibitors should inform the South Florida Fair immediately, in writing, giving their name, address, complete description of the entry and the reason for requesting reconsideration. Requests will not be considered later than 90 days after receiving notice of disallowance.

Premium Payments

Premium awards will be paid to the Best of Show. Best of Show awards will be chosen from the first-place winners in each Division. Amounts vary depending on Division.

Substitution

Substitutions may be made in still exhibits only in the same division of the original entry class of the original exhibitor and may be made only if completed by the entry delivery date. Substitutions must be made at time of delivery check in. The South Florida Fair or the judge may disqualify or transfer to the correct class any entry which is not a true representative of the division or class in which it is entered.

Previously Entered Entry

Any entry that has been exhibited at a previous South Florida Fair is not eligible for entry in this year's South Florida Fair, excluding Horticulture and Creative Aquarium entries.

Verification

Exhibitors wishing to verify that the South Florida Fair has received submitted entry forms must include a self-addressed/stamped envelope when submitting entry forms. Online submissions will receive a confirmation email.

Responsibility

The South Florida Fair shall not be responsible for exhibits remaining on the fairgrounds after designated release times. All still exhibits or display elements remaining on the Fairgrounds after the designated release time will be treated as abandoned property and will be disposed of on or before Feb. 3 of the current year.

Removal of Entries

Exhibitors may not remove their entry from the South Florida Fair once it has been accepted. Entries must be on exhibit at the official opening of the Fair or at any other time specified in the Competition Handbook and shall not be removed from the Fairgrounds prior to the release date printed in the handbook, except (at the discretion of the South Florida Fair) in cases of evidence of sickness, accident and/or death, or other circumstances that are in the best interests of the Fair.

Design

The South Florida Fair assumes total design control over the presentation of the exhibits. Entries designed for hanging and not so equipped will be hung in a manner deemed appropriate by the Fair. No exhibit changes will be made once the entries have been displayed. Once an entry has been received by the South Florida Fair, no further handling of entry by exhibitor shall be permitted. Relocation and final placement shall be accomplished by South Florida Fair personnel. Entries requiring assembly/disassembly must include detailed instructions and sketches for assembly/disassembly. Instructions should indicate lifting points, unsecured parts and any other information required for such handling. Where necessary, bank pins will be utilized to attach exhibits for display.

How to Enter Online

Exhibitors are encouraged to enter online at www.southfloridafair.com/TheCreationStation.

- Review this Competition Handbook to see which division and class your entry is eligible to compete in. Follow the easy steps listed below to enter.
- To enter online, go to www.southfloridafair.com/TheCreationStation and complete the form. Click the submit button and make sure you are brought to the thank you for registering page.
- Everyone must register as a new exhibitor each year.
- When registering, please verify all information is correct. Please pay special attention to capitalization, full names of cities/counties and use proper spelling (no abbreviations).

Mailing Paper Entry Forms

Entry Forms must be postmarked by Friday, Dec. 30, 2022.

Failure to complete any portion of entry form may result in disqualification.

Mail Entry Form to:

The Creation Station, Fiber Arts - Adult/Youth
P.O. Box 210367
West Palm Beach, FL 33421-0367

Delivery Entries

All entries must be delivered to the South Florida Fair on either:

Tuesday, Jan. 3
9 a.m. – 5 p.m.

Wednesday, Jan. 4
9 a.m. – 5 p.m.

Thursday, Jan. 5
9 a.m. – 5 p.m.

Friday, Jan. 6
9 a.m. – 5 p.m.

Saturday, Jan. 7
9 a.m. – 5 p.m.

Deliver entries to:

South Florida Fair
Building 3
Attn: Lorie Stinson

Enter Gate 10 off Fairgrounds Road.

Entries arriving at the Fairgrounds after delivery deadline may be disqualified.

Retrieving Entries

- See the calendar for pick up dates, times, and locations (Page 1)
- Entries not picked up on designated dates can be arranged for special pick up appointment by emailing lorie@southfloridafair.com
- All entries not claimed by Feb. 3 of the same year will be recycled, disposed, or donated.

Adult/Youth Fiber Arts, Sewing and Quilting Competition Entry Form

OFFICE USE ONLY

Exhibitor # _____

Entry Forms must be postmarked by Friday, Dec. 30, 2022.
Failure to complete any portion of entry form may result in disqualification.

Please print legibly

Exhibitors Name (First, Last)		If Youth wins prize money, who should the check be made payable to?	
Mailing Address		County	
City	State	Zip Code	
Phone		Email	

Competition Division: Youth Adult (ages 18+) Senior (ages 60+)

Exhibitors may enter up to three (3) entries per division for judging.

	DIVISION#	CLASS#	ITEM DESCRIPTION
1			
2			
3			
4			
5			
6			
7			
8			
9			

I hereby certify that I have read the South Florida Fair General Rules for The Creation Station, Crafts & Specialty Arts Program (Page 7) and the above item(s) is/are entered for exhibition strictly in accordance with these rules, by which I agree to be governed. I also agree that the South Florida Fair may use my name, likeness, or photograph (including, but not limited to photographs of my entry), in any manner relating to my participation in The Creation Station, Crafts & Specialty Arts Program, free of charge and without further notice or consultation.

Signature of exhibitor

Date

Signature of parent/guardian

Date

Mail Entry Form to:

The Creation Station, Fiber Arts – Adult/Youth
South Florida Fair
P.O. Box 210367
West Palm Beach, FL 33421-0367