

Fine Handcrafted Furniture Competition Handbook

For more information, contact
Lorie Stinson, CFE
Exhibits and Special Events Manager
Phone: (561) 790-5245
Email: lorie@southfloridafair.com

IMPORTANT DATES

Online or Paper Entry Form deadline
Friday, April 23, 2021

Deliver items to Building 3 at the South Florida Fair (see Page 5)

Items exhibited
May 7 - 23, 2021

Entry pick up
Monday, May 24, 2021
9 a.m. - 5 p.m.

Competition Overview

Entry Fee: FREE

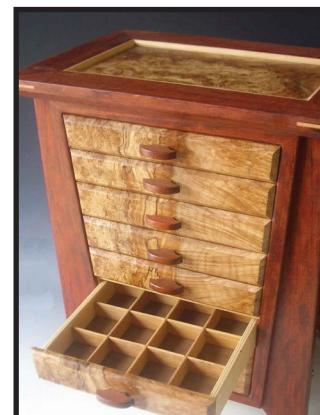
How to enter online – Page 5
General Rules – Page 6
Paper entry form - Page 7

Exhibitors are encouraged to read this handbook in its entirety.

Eligibility

- The Fine Handcrafted Furniture Basic Divisions are open to all Florida residents ages 18 and up.
- The Fine Handcrafted Furniture Advanced Divisions are open to all Florida residents ages 18 and up, who have previously won a first place or Best of Show in the Basic Division, receive a major portion of your income from the sale of your craft, or teach fine handcrafted furniture classes. You must compete in the Advanced Division.

NOTE: *If you have recently moved to Florida and feel that your skill level qualifies you to compete in the Advanced Division, you may do so.*



Entry Rules

Handcrafted furniture consists of furniture constructed of appropriate woods which, when finished, will enhance the natural beauty and construction. The choice of wood, glued joinery and finish give the furniture a lasting strength and appearance, which contribute to the overall aesthetics achieved only by such a craft.

NUMBER OF ENTRIES

Due to space limitations, only two (2) entries per class may be entered by any one individual.

PREPARATION GUIDELINES

- No kits or commercially assembled or computer generated (CNC) units accepted.
- No toys, miniature items, carvings, or woodturnings will be accepted.
- Entries with more than 25 percent scrollwork will not be permitted.
- Entered items must fit the classification of furniture and must be that of the crafter making the submission.
- Furniture sets may be exhibited separately.
- During the entry period, the assigned receivers will verify correctness of classification and adherence to rules. They will reclassify and/or disqualify fairly and to the best of their ability, and with oversight of the Exhibits and Special Events Manager (to avoid violating South Florida Fair policies).
- Entered items may be offered for sale at the option of the exhibitor, however, all entered items must remain on exhibition until 9 a.m. on Monday, May 24, 2021.

GENERAL ENTRY RULES

- Entries previously exhibited in the South Florida Fair may not be submitted for competition.
- Entries must have been prepared/made/processed by the exhibitor in whose name they are entered.
- In keeping with the South Florida Fair's family orientation, nudes or items of an offensive, controversial or objectionable nature or subject matter will not be accepted.
- Entries completed by two or more individuals are permitted, but will be considered as one exhibitor (the individual who entered online).

Judging and Awards

The Fair ensures the judges are knowledgeable in the division in which they are judging and will be impartial. Judges reserve the right to reassign entries to a more appropriate division or class. Judging will be done using a scorecard to assist in keeping decisions as objective as possible. *The decision of the judge(s) is final.*

If, at the judge's discretion, an entry does not merit a placing, the judge shall give no award under any circumstance. This rule applies whether there is one or more exhibits in the class.

Awards Information

Fine Handcrafted Furniture – Basic and Advanced Divisions

First Place – South Florida Fair Ribbon

Second Place – South Florida Fair Ribbon

Third Place – South Florida Fair Ribbon

Best of Show – South Florida Fair Ribbon and Premium Payment

Best of Show awards will be chosen from the first-place winners in each division.

Judging Criteria

Workmanship – 40 points

Material Selected – 10 points

Design – 20 points

Finish – 30 points

Complexity – 50 points

Divisions and Classes

Definitions

Fine wood furniture starts with hardwood (like cherry, maple, walnut and oak) as opposed to soft wood (like pine and other coniferous woods).

Furniture: An object that normally rests on the floor.

Accessory: An object that normally rests on a piece of furniture or is hung on a wall.

Furniture Basic – Adult - Division 1

Class Description

- 1 Bed, Cradle
- 2 Chair
- 3 Bench or Stool
- 4 Bookcase
- 5 Quilt Rack
- 6 Display Cabinet, Curio Cabinet
- 7 China Cabinet, Hutch
- 8 Buffet
- 9 Armoire
- 10 Entertainment Center
- 11 Chest
- 12 Chest of Drawers
- 13 Desk
- 14 Table
- 15 Dining Table
- 16 Clock
- 17 Jewelry Box
- 18 Furniture Set (related pieces to the whole set)
- 19 Other not listed

Furniture Advanced – Adult - Division 2

Class Description

- 1 Bed, Cradle
- 2 Chair
- 3 Bench or Stool
- 4 Bookcase
- 5 Quilt Rack
- 6 Display Cabinet, Curio Cabinet
- 7 China Cabinet, Hutch
- 8 Buffet
- 9 Armoire
- 10 Entertainment Center
- 11 Chest
- 12 Chest of Drawers
- 13 Desk
- 14 Table
- 15 Dining Table
- 16 Clock
- 17 Jewelry Box
- 18 Furniture Set (related pieces to the whole set)
- 19 Other not listed

Accessory Basic – Adult - Division 3

Class Description

- 1 Humidor
- 2 Jewelry Box
- 3 Clock (wall or table)
- 4 Box/Container
- 5 Table Lamp
- 6 Chest
- 7 Cabinet (wall or table)
- 8 Mirror/Picture Frame
- 9 Cutting Board
- 10 Other not listed

Accessory Advanced – Adult - Division 4

Class Description

- 1 Humidor
- 2 Jewelry Box
- 3 Clock (wall or table)
- 4 Box/Container
- 5 Table Lamp
- 6 Chest
- 7 Cabinet (wall or table)
- 8 Mirror/Picture Frame
- 9 Cutting Board
- 10 Other not listed

How to Enter Online

Exhibitors are encouraged to enter online at www.southfloridafair.com/TheCreationStation.

- Review this Competition Handbook to see which division and class your entry is eligible to compete in. Follow the easy steps listed below to enter.
- To enter online, go to www.southfloridafair.com/TheCreationStation and complete the form. Click the submit button and make sure you are brought to the thank you for registering page.
- Everyone must register as a new exhibitor each year.
- When registering, please verify all information is correct. Please pay special attention to capitalization, full names of cities/counties and use proper spelling (no abbreviations).

Mailing Paper Entry Forms

Entry Forms must be postmarked by Friday, April 23, 2021.

Failure to complete any portion of entry form may result in disqualification.

Mail Entry Form to:

The Creation Station, Crafts & Specialty Arts – Fine Handcrafted Furniture
South Florida Fair
P.O. Box 210367
West Palm Beach, FL 33421-0367

Delivery Entries

All entries must be delivered to the South Florida Fair on either:

Monday, April 26 9 a.m. – 5 p.m.	Tuesday, April 27 9 a.m. – 5 p.m.	Wednesday, April 28 9 a.m. – 5 p.m.	Thursday, April 29 9 a.m. – 5 p.m.	Friday, April 30 9 a.m. – 5 p.m.	Saturday, May 1 9 a.m. – 5 p.m.
-------------------------------------	--------------------------------------	--	---------------------------------------	-------------------------------------	------------------------------------

Deliver entries to:

South Florida Fair
Building 3
Attn: Lorie Stinson

Enter Gate 10 off Fairgrounds Road.

Entries arriving at the Fairgrounds after delivery deadline may be disqualified.

Retrieving Entries

- See the calendar for pick up dates, times and locations (Page 1)
- Entries not picked up on designated dates can be arranged for special pick up appointment by emailing lorie@southfloridafair.com
- All entries not claimed by May 24 of the same year will be recycled, disposed or donated.

General Rules

Disclaimer

All competitive exhibits are entered at the exhibitor's risk. The South Florida Fair does not insure and is not responsible for any loss, damage, or theft of entries, even if the loss, damage, or theft occurs as the result of the handling of the exhibit by staff, volunteers, contractors and/or visitors. If the exhibitor desires insurance coverage, this coverage should be secured from a personal insurance agent prior to entry and the policy written to cover the period of exhibition and transportation. Reasonable care will be taken to prevent loss or damage to exhibits. Unauthorized persons are not permitted in the building after closing hours.

Division/Class Cancellation

The South Florida Fair reserves the right to return entries and cancel any division or class in which, in its judgment, the entries are insufficient to secure adequate competition.

Entry Errors

South Florida Fair is not responsible for finding errors in entries. Exhibitors are responsible for any and all errors which were submitted online or on entry and summary forms. No exhibitor shall be entitled to an award which has been disallowed as the result of his own error. The South Florida Fair shall withhold the payment of awards for exhibits that are ineligible and may recover awards that have been paid for ineligible entries that are disclosed during post audits of Fair records. However, exhibitors with cause are entitled to question the validity of any disallowance. Such exhibitors should inform the South Florida Fair immediately, in writing, giving their name, address, complete description of the entry and the reason for requesting reconsideration. Requests will not be considered later than 90 days after receiving notice of disallowance.

Premium Payments

Premium awards will be paid to the Best of Show. Best of Show awards will be chosen from the first-place winners in each Division. Amounts vary depending on Division.

Substitution

Substitutions may be made in still exhibits only in the same division of the original entry class of the original exhibitor, and may be made only if completed by the entry delivery date. Substitutions must be made at time of delivery check in. The South Florida Fair or the judge may disqualify or transfer to the correct class any entry which is not a true representative of the division or class in which it is entered.

Previously Entered Entry

Any entry that has been exhibited at a previous South Florida Fair is not eligible for entry in this year's South Florida Fair, excluding Horticulture and Creative Aquarium entries.

Verification

Exhibitors wishing to verify that the South Florida Fair has received submitted entry forms must include a self-addressed/stamped envelope when submitting entry forms. Online submissions will receive a confirmation entries are submitted.

Responsibility

The South Florida Fair shall not be responsible for exhibits remaining on the fairgrounds after designated release times. All still exhibits or display elements remaining on the Fairgrounds after the designated release time will be treated as abandoned property and will be disposed of on or before May 24 of the current year.

Removal of Entries

Exhibitors may not remove their entry from the South Florida Fair once it has been accepted. Entries must be on exhibit at the official opening of the Fair or at any other time specified in the Competition Handbook and shall not be removed from the Fairgrounds prior to the release date printed in the handbook, except (at the discretion of the South Florida Fair) in cases of evidence of sickness, accident and/or death, or other circumstances that are in the best interests of the Fair.

Design

The South Florida Fair assumes total design control over the presentation of the exhibits. Entries designed for hanging and not so equipped will be hung in a manner deemed appropriate by the Fair. No exhibit changes will be made once the entries have been displayed. Once an entry has been received by the South Florida Fair, no further handling of entry by exhibitor shall be permitted. Relocation and final placement shall be accomplished by South Florida Fair personnel. Entries requiring assembly/disassembly must include detailed instructions and sketches for assembly/disassembly. Instructions should indicate lifting points, unsecured parts and any other information required for such handling. Where necessary, bank pins will be utilized to attach exhibits for display.

2021 South Florida Fair

Fine Handcrafted Furniture Competition Entry Form

OFFICE USE ONLY

Exhibitor # _____

Entry Forms must be postmarked by Friday, April 23, 2021.
Failure to complete any portion of entry form may result in disqualification.

Please print legibly

Exhibitors Name (First, Last)		
Mailing Address		County
City	State	Zip Code
Phone	Email	

Competition Division: Basic (ages 18+) Advanced (ages 18+)

Only two (2) entries per class may be entered by any one individual.

	DIVISION#	CLASS#	ITEM DESCRIPTION
1			
2			
3			
4			
5			
6			

I hereby certify that I have read the South Florida Fair General Rules for the The Creation Station, Crafts & Specialty Arts Program (Page 6) and the above item(s) is/are entered for exhibition strictly in accordance with these rules, by which I agree to be governed. I also agree that the South Florida Fair may use my name, likeness, or photograph (including, but not limited to photographs of my entry), in any manner relating to my participation in the The Creation Station, Crafts & Specialty Arts Program, free of charge and without further notice or consultation.

Signature of exhibitor

Date

Mail Entry Form to:

The Creation Station, Crafts & Specialty Arts – Woodturning
South Florida Fair
P.O. Box 210367
West Palm Beach, FL 33421-0367