

# HONEY SHOW

## Department 310

Lynda Rizzardi, Department Head (865) 323-0807

Shirley DeBusk, Assistant

**This Department has  
Tennessee State Fair  
Eligible Lots!  
Look for this symbol:**



**2022 JUDGE:** *Melissa Ross*

**Entry Deadline: Friday, August 26, 2022**

**Judging will be: Sunday, September 11, 2022 - 8:00 a.m.**

### IMPORTANT NOTICE

The Fair will open to the public at 4:00 p.m., Friday, September 9, and close at midnight, Sunday, September 18. In order to open at 4:00 p.m. on Friday, we must have as many exhibits as possible in place by this time. All exhibits must be brought to the Jacob Building Thursday, September 8 from 12:00 p.m. to 8:00 p.m., except bees, which must be in the building no later than noon on Saturday, September 10th. **Exhibitors bringing bees on Saturday, September 10th should enter at the Hilltop Gate.**

### RULES AND REGULATIONS

Individual **Extracted Honey** competition entries must be in a one pound queen line or classic jar, and **Comb Honey** competition entries must be in a cylindrical one pound honey jar or a pint mason jar. All jars must be unlabeled and only one entry per lot per exhibitor. **Only two entries per lot per family will be allowed.** **Beeswax** must weigh one pound or more. Please cover in plastic wrap. **Articles made of Beeswax** must be made by the exhibitor; please cover in plastic wrap. **Frames of Honey** must be placed in sanitary, bee-proof containers or securely wrapped in plastic wrap. **All Honey and Beeswax entries must be produced in the current year.** **All Entries** will be judged according to the official scorecard.

1. All entries should be made online at [www.tnvalleyfair.org](http://www.tnvalleyfair.org) or on the **Exhibitor Entry Form** located in the back of this book. The completed form can be faxed, e-mailed or mailed no later than August 26. Online entries will be accepted starting July 1, 2022.
2. **Entries will remain on display from the time of entry until 9pm, Sunday, September 18**, unless otherwise approved by the department head. Entries in Class 5 - BEES, that do not win a ribbon may be removed after judging. Entries may be removed between 9:00 p.m. and 10:00 p.m., Sunday, September, 18th only.
3. Leaking **Frames of Honey** will be disqualified.
4. **Observation Hives must have screen wire over air vents on the inside AND cannot be larger than two (2) deep frames.**
5. Sale of honey by the exhibitors **WILL NOT BE PERMITTED!**
6. Counties wishing to participate in Class 7 - County Displays should notify the department head of the Honey Show at least 30 days in advance of the opening day of the fair.

### OFFICIAL SCORE CARD FOR HONEY SHOW

#### Extracted Honey

Density (water content above 18.6% is disqualified, below 15.5% will be docked points).....	10 points
Absence of Crystals.....	10 points
Cleanliness.....	40 points
Flavor.....	10 points
Container Appearance.....	10 points
Accuracy of Filling.....	20 points
<b>Total</b> .....	<b>100 points</b>

#### Comb Honey

Neatness and Uniformity of Cut.....	20 points
Absence of Watery Cappings, Uncapped Cells and Pollen.....	20 points
Cleanliness.....	20 points
Uniformity of Appearance/Absence of Floating Cappings.....	20 points
Density and Flavor of Liquid.....	20 points
<b>Total</b> .....	<b>100 points</b>

**Official Score Card For Honey Show (continued)**  
**Frame of Honey**

Uniformity of Appearance.....	25 points
Absence of Uncapped Cells.....	20 points
Uniformity of Color.....	15 points
Absence of Watery Cappings.....	10 points
Cleanliness - Absence of Travel Stains.....	20 points
Freedom From Granulation and Pollen.....	10 points
<b>Total.....</b>	<b>100 points</b>

**Exhibit of Bees**

Comb Draw.....	15 points
Appearance.....	30 points
Pattern of Brood.....	20 points
Rate of Worker Cells.....	15 points
Conformity of Bees to Race.....	20 points
<b>Total.....</b>	<b>100 points</b>

**Beeswax Single Piece (Minimum 1 lb.)**

Cleanliness.....	35 points
Uniformity of Appearance.....	20 points
Color.....	15 points
Aroma.....	15 points
Absence of Cracks & Shrinkage.....	15 points
<b>Total.....</b>	<b>100 points</b>

**Beeswax Candle**

Cleanliness - Color Quality of Wax.....	30 points
Uniformity of Appearance & Shape.....	20 points
Quality & Color Appropriate to Product and Aroma.....	20 points
Finishing Details/ Wick Should be 1/2" in Length.....	30 points
<b>Total.....</b>	<b>100 points</b>

**Beeswax Product**

Cleanliness.....	30 points
Color Appropriate to Product.....	15 points
Quality and Appearance.....	30 points
Texture and Aroma.....	25 points
<b>Total.....</b>	<b>100 points</b>



**Individual Educational Exhibit & County Display (Class 7 & 8)**



Individual Education Exhibit:	
Attractiveness.....	20 points
Educational Value, Accurate Information & Correct Spelling.....	40 points
Adherence to and Inclusion of FAIR Theme.....	20 points
Quick and Easy Read - no larger than a standard 22"X8" poster.....	20 points
<b>Total.....</b>	<b>100 points</b>

County Display:	
Adherence to and Inclusion of FAIR Theme.....	20 points
Attractiveness.....	20 points
Educational Value, Accurate Information & Correct Spelling.....	40 points
Inclusion of Hive Products (Honey, Wax, Pollen, Propolis).....	20 points
<b>Total.....</b>	<b>100 points</b>

**Premiums for Class 1 - 4**  
**1st - \$15.00 2nd - \$10.00 3rd - \$5.00**  
**Credible Entries will receive a ribbon**

**CLASS 1—EXTRACTED HONEY**

Lot

- 01 - White
- 02 - Extra Light Amber 
- 03 - Light Amber
- 04 - Amber
- 05 - Dark Amber 

**CLASS 2—COMB HONEY**

Lot

- 01 - White
- 02 - Extra Light Amber
- 03 - Light Amber
- 04 - Amber
- 05 - Dark Amber

**CLASS 3—FRAME OF HONEY**


Lot

- 01 - Shallow frame light honey
  - 02 - Shallow frame dark honey
  - 03 - Deep frame of light honey
  - 04 - Deep frame of dark honey
- \* An Illinois frame may be entered into shallow or deep*

**CLASS 4—BEESWAX**

The desired color of beeswax is lemon.

Lot

- 01 - One entry of beeswax 
- 02 - Homemade products made of beeswax
- 03 - Candle

**Premiums for Class 5**  
**1st - \$45.00 2nd - \$40.00 3rd - \$30.00**  
**Credible Entries will receive a ribbon**



**CLASS 5—BEES**

**Exhibit of bees and marked queen on comb in an observation hive.**

Lot

- 01 - Italian
- 02 - Other

**Premiums for Class 6**  
**1st - \$20.00 2nd - \$15.00 3rd - \$10.00**  
**Credible Entries will receive a ribbon**

**CLASS 6—INDIVIDUAL EDUCATIONAL EXHIBIT RULES**

1. No larger than a standard 22"x28" poster exhibit on any phase of apiculture.
2. Lettering/wording must be legible from at least a 12-foot distance.
3. Must include Fair Theme.
4. Must fit in shelf space provided.

**CLASS 7 - COUNTY DISPLAY**

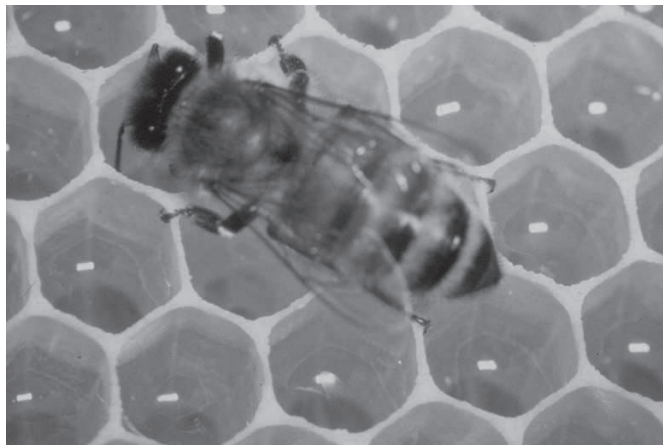
**Premiums for Class 7**  
**1st - 75.00 2nd - \$50.00 3rd - \$30.00**  
**Credible Entries will receive \$20.00**

Lot 01

Best display presenting an educational and promotional exhibit by a Tennessee County Beekeeping Association. Individuals may not enter this Class, only Beekeeping Associations. Please see Judging Criteria/Official Score Card on previous page.

**CLASS 8 - PHOTOGRAPHY**

**Premiums for Class 9**  
**1st - 12.00 2nd - \$8.00 3rd - \$6.00**  
**Credible Entries will receive a ribbon**



Competition is open to members of affiliated Associations of the Tennessee Beekeepers Association. Prints must be 8"x10" and mounted on a board (with a 1" border) on each side. No frames are permitted. Prints may be black and white or color. Photographs may only be entered once in any Tennessee Valley Fair show. Each photograph must be accompanied by a 3"x 5" card giving photo title, entrant's name, address, city, state, zip code, telephone number, and Tennessee Beekeeping Affiliated Association's name. (Cards will be taped to the back side of the photograph.)

Lot

- 01 - Close up print: Subject must relate to beekeeping; No person
- 02 - Scenic print: Apiary subject - hives, bees, flowers, etc.; No person
- 03 - Portrait print: A person involved in a beekeeping procedure in an appropriate apiary setting

**CLASS 9 - SWEEPSTAKES**

Lot 01

Plaques will be awarded to the two exhibitors earning the most points in Classes 1 through 6.

Points will be calculated as follows:

- Blue ribbon - 10 points
- Red ribbon - 8 points
- White ribbon - 6 points