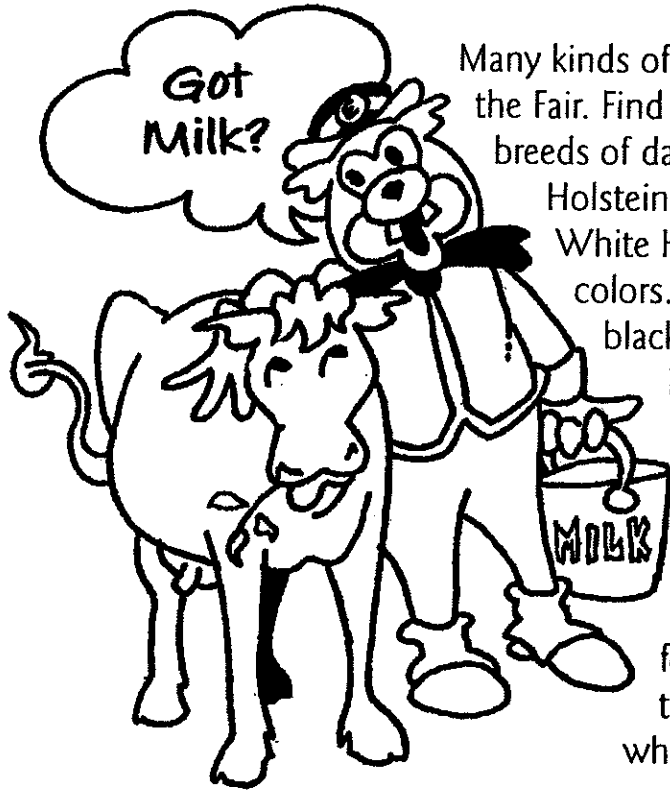


# BiggiE's BrainGame At The MALLARY COMPLEX

## The Big E BrainGain Number 11



Many kinds of animals live in the Mallery Complex during the Fair. Find the dairy cattle first. There are 7 different breeds of dairy cows; Ayrshires, Brown Swiss, Guernseys, Holsteins, Jerseys, Milking Shorthorns, and Red & White Holsteins. They are all different sizes and colors. Holsteins are the largest breed and are black and white, and Jerseys are the smallest breed and are light brown and black. Before a dairy cow has her first calf she is called a heifer, but after she has her first calf she is called a cow and begins producing milk. A cow's milk is produced and processed very carefully so it's always clean and safe for you to drink. Cows are milked at least two times every day and today one cow produces what once took 10 cows to produce!

**While you are in the Mallery Complex, go to The Big E Milking Parlor to play game #11. You may even see a cow being milked.**

### BiggiE's BrainGame Number 11

Imagine you have just bought a Holstein cow. The dairy farmer told you that she produces the average amount of milk for her breed. Use the signs above the milking parlor and write down her yearly milk production.

\_\_\_\_\_ pounds of milk per year from a Holstein cow

A gallon of milk weighs 8.6 pounds. How many pounds and gallons of milk will your cow produce in:

One year \_\_\_\_\_(pounds) \_\_\_\_\_(gallons)

One day \_\_\_\_\_(pounds) \_\_\_\_\_(gallons)

## BiggiE's BrainGame At The

# MALLARY COMPLEX

## The Big E BrainGain Number 12

Llamas and alpacas also call the Mallery Complex home during the last week of the Fair. Llamas and alpacas are members of the camelid family and like goats, sheep, and cows, llamas and alpacas are ruminants. A ruminant is an animal with multiple stomachs that can regurgitate their food in the form of cud to re-chew it. When a female llama or alpaca gives birth, their babies are called crias.

Llamas are much bigger than alpacas and were originally bred to be meat animals and to carry heavy loads through the mountains of Peru. Today, llamas are used for their fleece or fiber, and they are used as guard animals to protect flocks of sheep. Alpacas on the other hand are much smaller than llamas and unlike llamas, alpacas were originally bred for their fiber and are still bred for that today. Alpaca fiber is much softer and finer than llama fiber, but it's still just as warm.

**Go to the Fiber Nook to help you play Game #12.**

## BiggiE's BrainGame Number 12

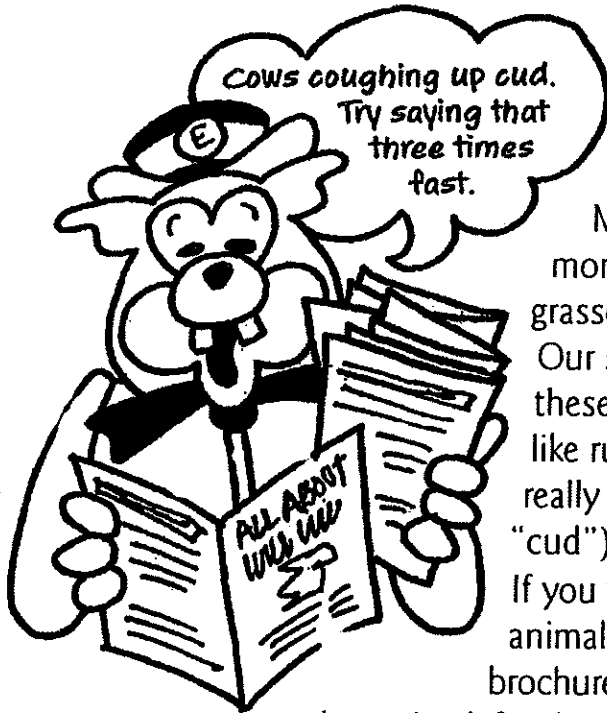
In the Fiber Nook, feel the fiber from a llama and the fiber from an alpaca. Can you tell the difference?

\_\_\_\_\_

Which is bigger, a llama or an alpaca? \_\_\_\_\_

# BiggiE's BrainGame At The **MALLARY COMPLEX**

## The Big E BrainGain Number 13



Production livestock provide us with food, clothing, and many other things we use every day. Dairy cows, beef cattle, sheep, swine (pigs), dairy goats, llamas, and alpacas are examples of production livestock.

Many of these animals are ruminants. They have more than one stomach. This is why they can eat grasses and other plants (forages) that we can't eat. Our single compartment stomachs can't change these forages into the food we need to stay healthy like ruminants. They swallow their food without really chewing it, then cough up the food (now called "cud"), chew and re-swallow it.

If you would like to know more about these remarkable animals, check out The Big E's ALL ABOUT... brochures. There's one for each of the animals named above. Look for them right here in the Mallary Complex.

## BiggiE's BrainGame Number 13

Fill in the blanks below with one or more animals that provide the products listed.

Purpose/Products:

Fiber

Milk

Meat

\_\_\_\_\_

\_\_\_\_\_

\_\_\_\_\_

\_\_\_\_\_

\_\_\_\_\_

\_\_\_\_\_

**BiggiE's BrainGame At The**  
**MALLARY COMPLEX**

**The Big E BrainGame Number 14**

Draw a line from the mother to the correct name of her baby (one will be used more than once)

Mare	Piglet	
	Kid	
		Alpaca
Doe	Chick	
	Lamb	
		Ewe
Llama	Calf	
	Cria	
		Cow
Sow	Foal	

**Did you know?**

- A newborn calf weighs 80 – 100 pounds
- A goat kid weighs 3 – 9 pounds
- A piglet weighs 3 pounds
- A lamb weighs 8 – 12 pounds
- A llama cria weighs 20 – 30 pounds
- A foal weighs 35 – 80 pounds (heavy breeds 80 -175 pounds)
- An alpaca cria weighs 15 – 19 pounds