



UPMC EVENTS CENTER



UPMC EVENTS CENTER AT ROBERT MORRIS UNIVERSITY

UPMC EVENTS CENTER

The premier venue in Pittsburgh's Parkway West/Airport Corridor, with corporate and meeting facilities customizable for any size group and catering on site.

Athletic facilities include a main arena floor that can be expanded for practice and a separate practice court. Locker rooms connect to a medical exam room, weight rooms with exercise equipment, and a treadmill pool and plunge tub. All three teams have their coaching and staff offices in the center.

PEOPLES COURT

Peoples Court is the home of three RMU Colonials NCAA Division I teams — men's and women's basketball and women's volleyball. The arena seats 4,000 for sports or concerts and can be configured to accommodate 100 booths for trade shows and expos. The Eat'n Park Club VIP seating section has a capacity of 150 people, and four further reception areas in the complex each hold between 150-250 guests.

The 3-ton LED video display over the court has four main 12' x 5' screens, plus four smaller screens at the corners and a ring display underneath 50' in circumference for scrolling messages and other content. An LED ribbon 2½' tall circles the arena for 502' on three sides. Twin screens at the far end are over 13' tall and can display speakers or concert performers.

UPMC HEALTH PLAN CONFERENCE CENTER

UPMC Health Plan Conference Center features a 5,000-square-foot conference hall that seats up to 525 or can be reconfigured into five separate rooms. The center also contains two boardrooms and a buffet and reception hall.

BY THE NUMBERS

525 tons of steel
18,200 square feet of glass
25,000 cubic yards of dirt excavated for foundation
4,400 gallons of paint
403 maple floor panels for court
4,400 square yards of carpeting (almost an acre)
3,700 square yards of polished concrete
8 stairways

EVENT BOOKING

Megan Orient
412-397-2014
morient@upmceventscenter.com

>FOR UPCOMING EVENTS, VISIT UPMCEVENTSCENTER.COM



Public Rental Rates - UPMC Events Center

UPMC Health Plan Conference Center Room Dimensions & Capacities

UPMC EVENTS CENTER



Room Name	Dimensions	Sq Ft	Ceiling Ht	Banquet 6' Round	Info Fair Board (30"x6')	Class Room	Recep- tion	Theater
INDIVIDUAL ROOMS								
Board Room 1	15 x 30	450	9' 9"	n/a	16+	n/a	n/a	n/a
Board Room 2	15 x 29	435	9' 9"	n/a	16+	n/a	n/a	n/a
Hall 1	33 x 21	693	9' 9"	40	35	10	45	100
Hall 2	21 x 26	546	9' 9"	30	25	7	30	75
Hall 3	33 x 21	693	9' 9"	40	35	10	45	100
Hall 4	21 x 26	546	9' 9"	30	25	7	30	75
Hall 5	48 x 59	2,832	9' 9"	160	60	35	170	300
COMBINED ROOMS								
Hall 1 & 2	21 x 60	1,260	9' 9"	90	55	15	90	125
Hall 3 & 4	21 x 60	1,260	9' 9"	90	55	15	90	125
Hall 1 & 3	33 x 42	1,386	9' 9"	90	45	15	100	125
Hall 2 & 4	42 x 26	1,092	9' 9"	70	40	12	70	125
Halls 1-4	42 x 60	2,520	9' 9"	150	60	30	160	300
Halls 1--5 (ALL)	60 x 91	5,460	9' 9"	300	n/a	60	200	450
PRE-FUNCTION SPACES								
Landing / Lobby	15 x 61	915	9' 11"	n/a	n/a	12	n/a	150
Gallery 1 / 3 / 5	12 x 125	1,500	9' 11"	n/a	n/a	15	n/a	225
Reception Hall	15 x 79	1,185	9' 11"	50	n/a	15	130	150

UPMC Events Center - Arena & Special Event Spaces Room Dimensions & Capacities

Room Name	Approx. Dimensions	Sq Ft	Ceiling Ht	Banquet 6' Round	Info Fair Board (30"x6')	Class Room	Recep- tion	Theater
SPECIAL EVENT SPACES								
Eat'n Park VIP Club	15 x 123	1,845	8' 10"	80	n/a	15	45	200
Hall of Colonials	16 x 168	2,688	15' 5"	130	n/a	45	84	275
Harshman Family Rotunda	38 x 42	1,596	22' 11"	100	n/a	25	60	200
		(31,752)	(25')			100 (10x10)		
People's Court (Arena)	109 x 162	17,658	33' 5"	600	n/a	270	800	1,500
South Concourse	16 x 168	2,688	20' 9"	150	n/a	25	75	275
West Curve Concourse	36 x 100	3,600	17' 7"	150	n/a	34	100	300

Notes:

- Rentals are available for half day (5 hours) or a full day.
- Parking is free, with nearly 350 spots adjacent to the building.
- Conference Center rental fees include basic room set up of house furnishings, and housekeeping during the event.
Also includes skirted registration tables, easels as available, and self-service coat racks as available.
- Arena and special event space rentals have varying inclusions with the space.
- Some room reservations may be limited to a 90-day window, depending on facility scheduling needs.
- Additional charges may apply for: Catering, AV technicians, post-event housekeeping, post-event re-set, security (required for alcohol), dance floors or stages, removal of existing furnishings, loading dock attendants, ushers, etc.

UPMC EVENTS CENTER



Hall 5

Hall 5

Hall 3

Hall 2

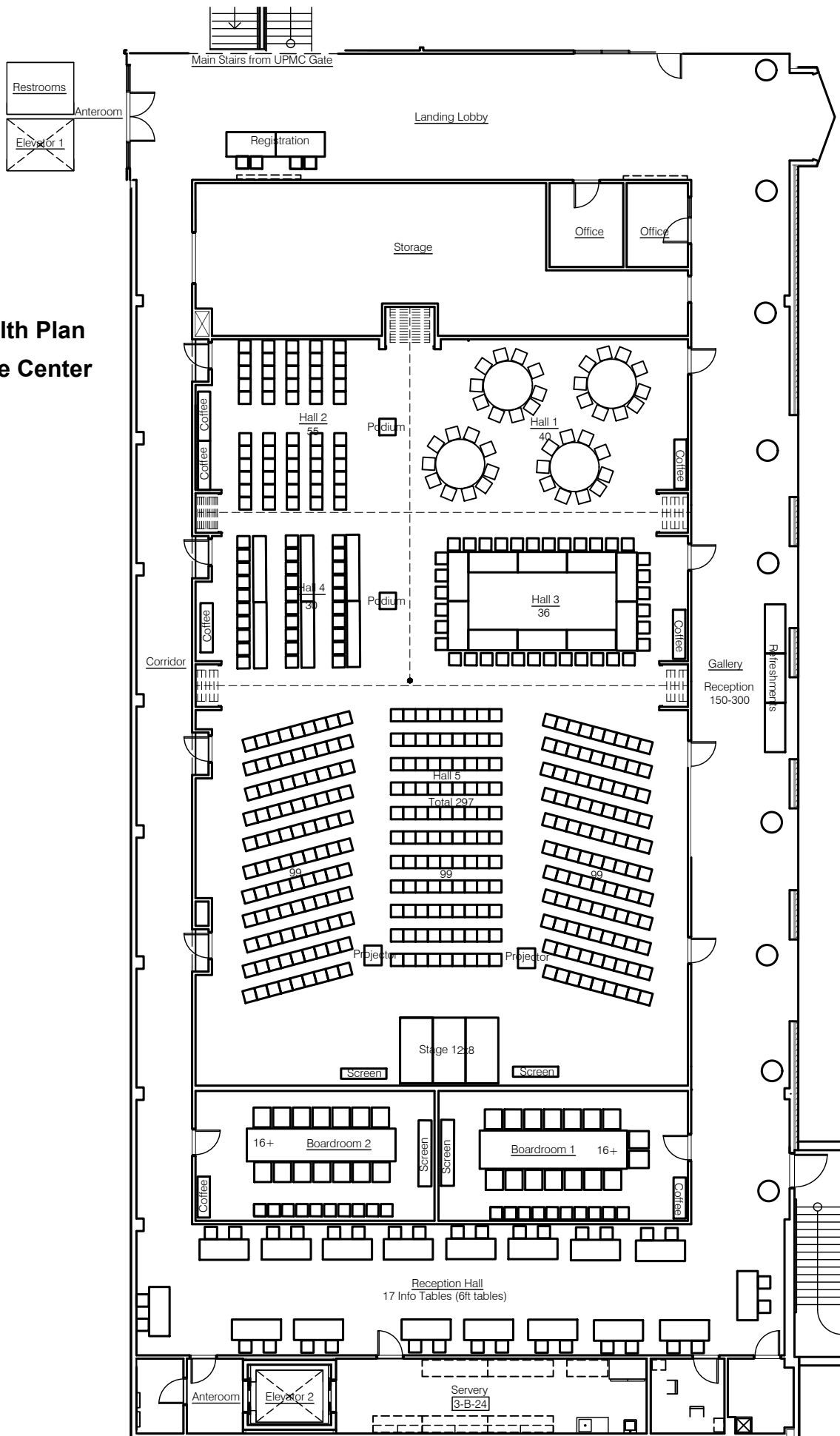
Hall 4

Hall 1

Reception Hall

Gallery

**UPMC Health Plan
Conference Center**





Peoples Court (arena floor)



Peoples Court (arena floor)



Peoples Court (arena floor)



Peoples Court

UPMC EVENTS CENTER



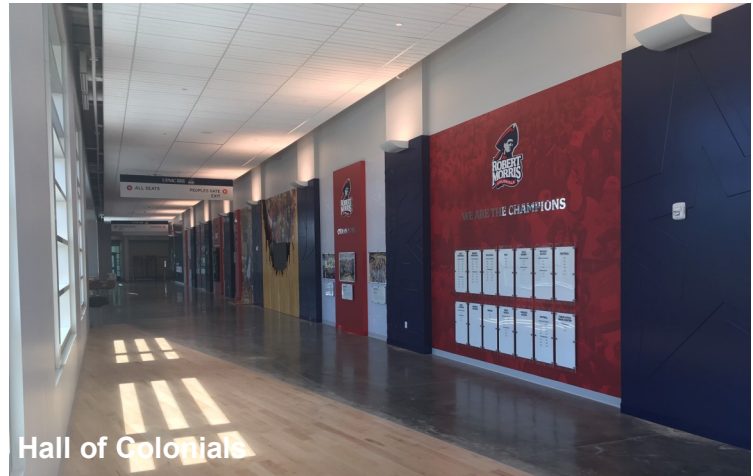
Arena Chairs for Banquet



Hall of Colonials

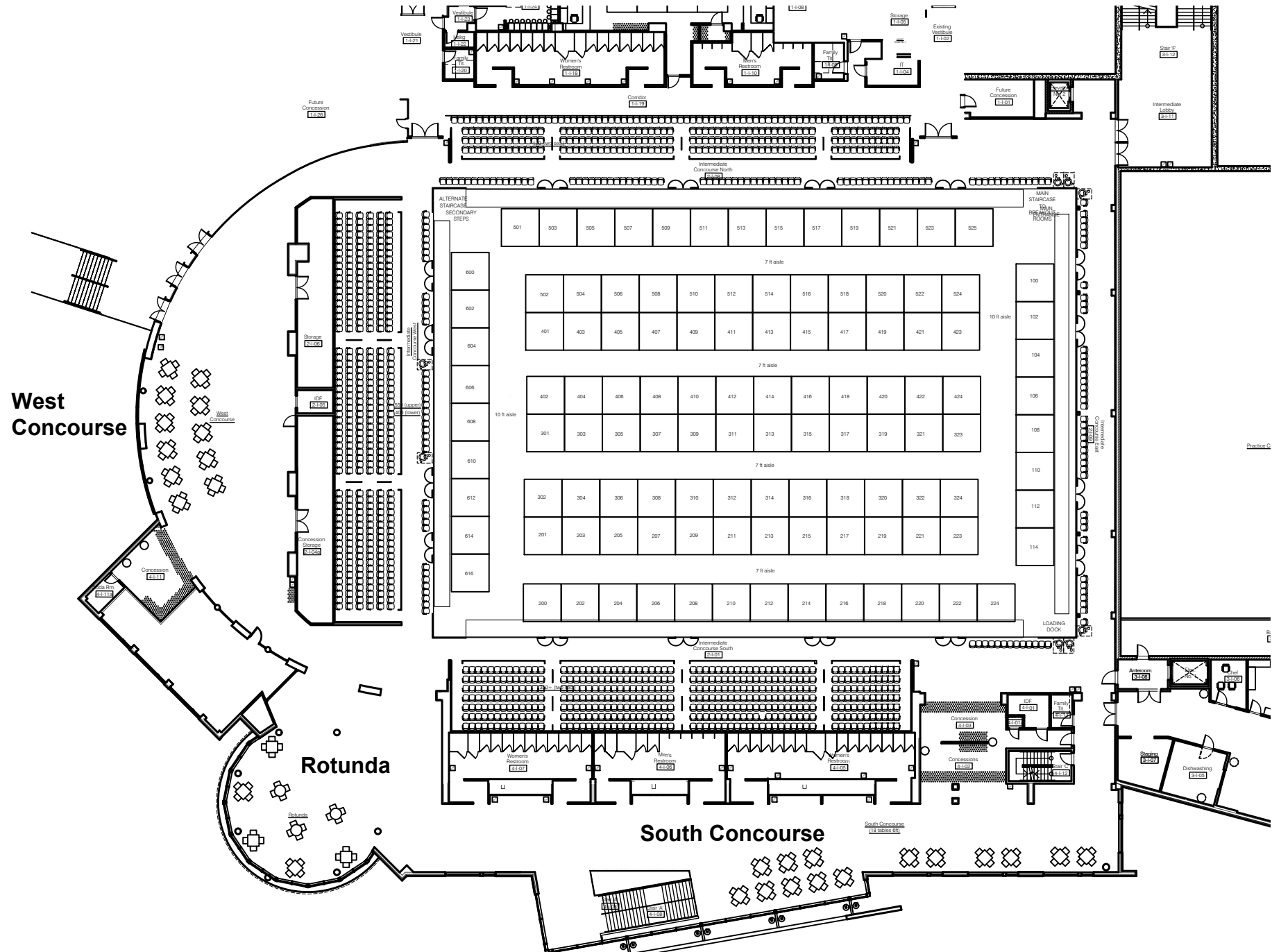


Hall of Colonials



Hall of Colonials

Peoples Court (arena)

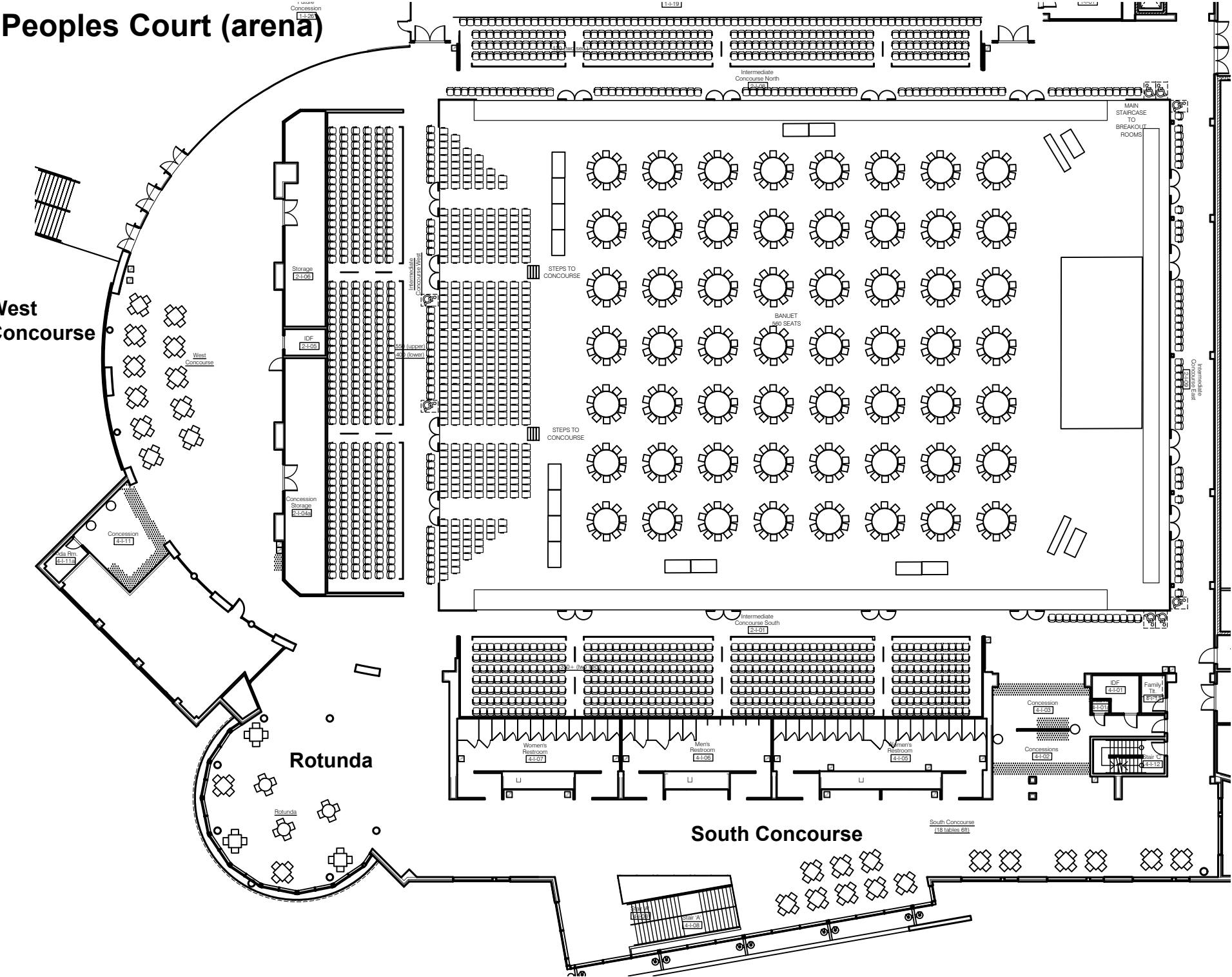


Peoples Court (arena)

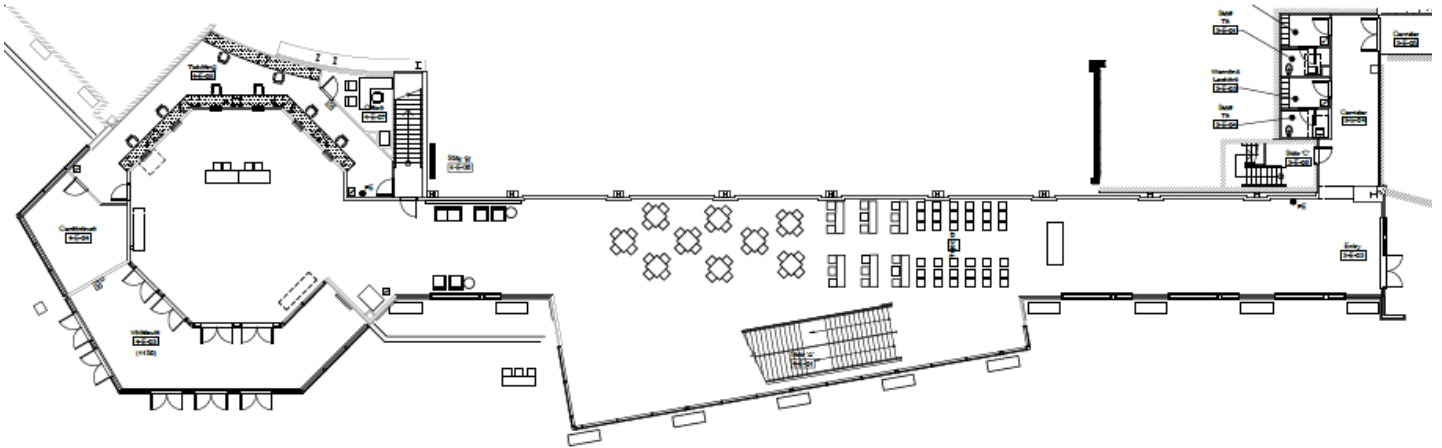
West
Concourse

Rotunda

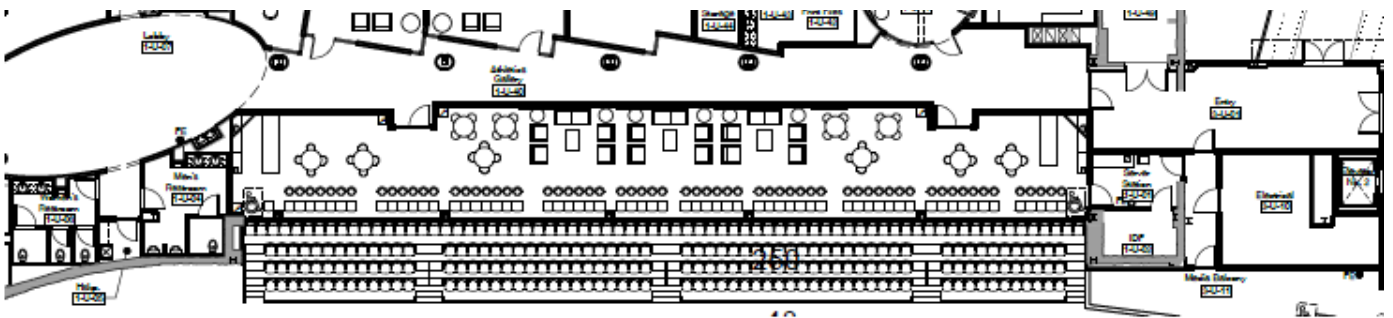
South Concourse



Hall of Colonials



Eat'n Park VIP Club





Harshman Family Rotunda



Harshman Family Rotunda

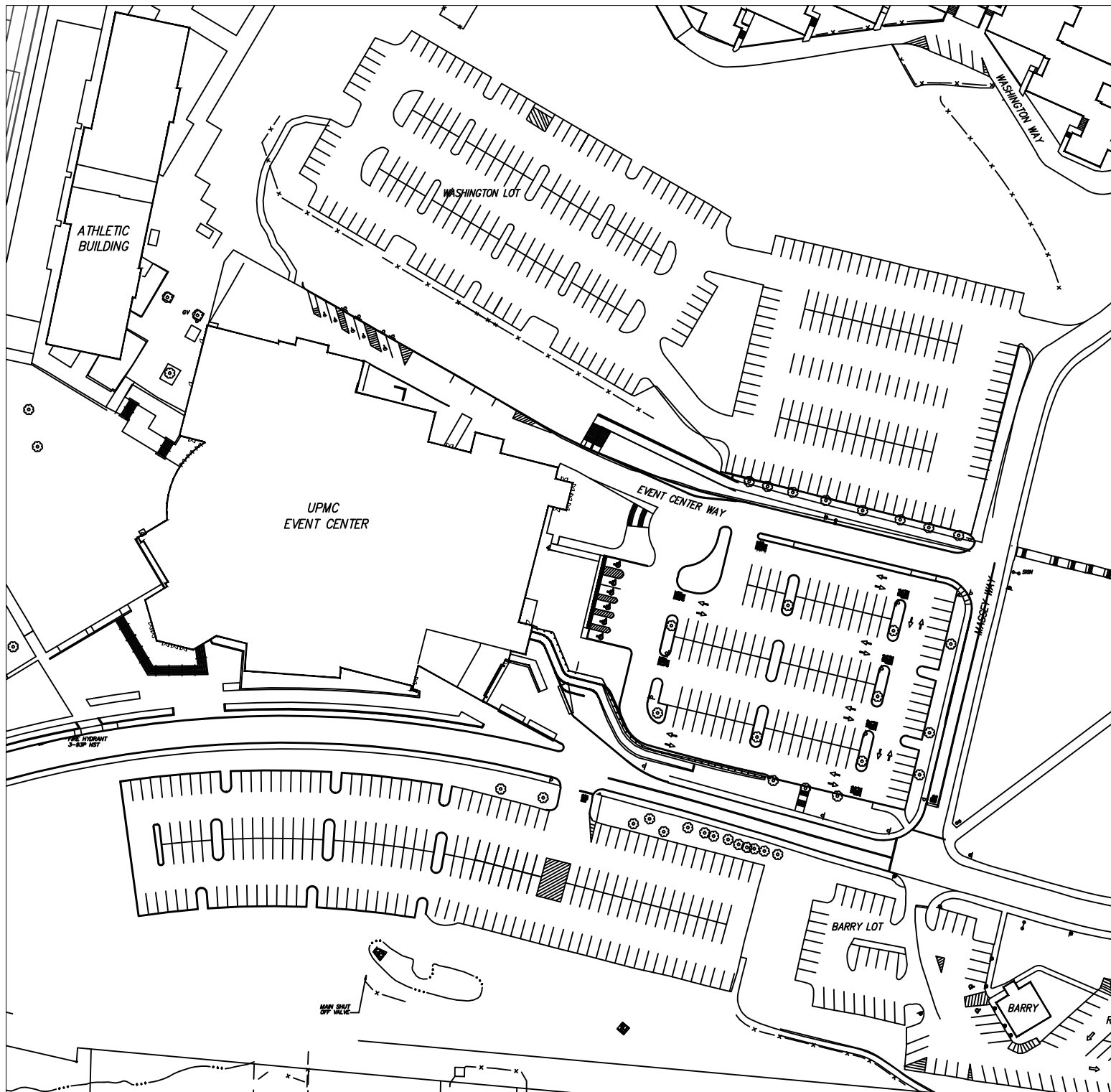


Eat'n Park VIP Club



West Concourse



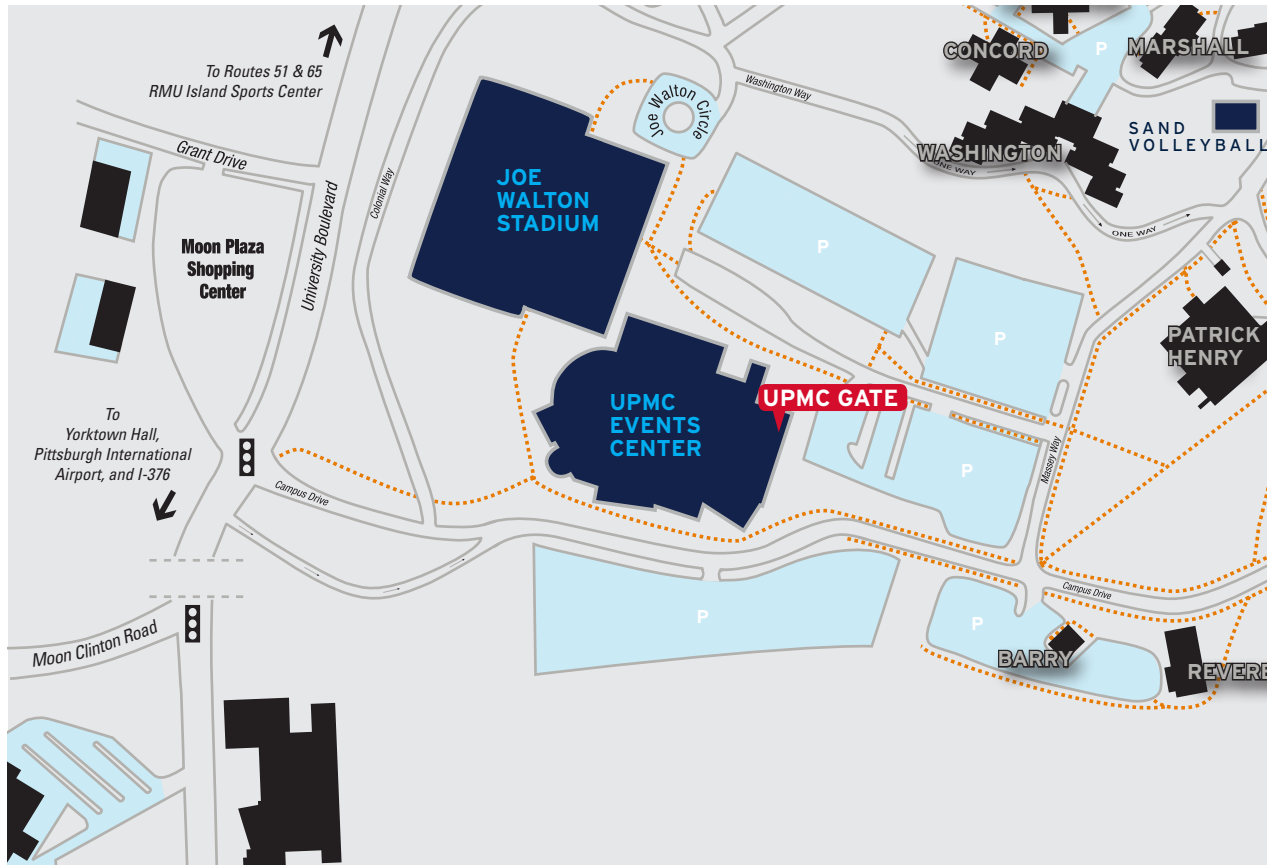


UPMC | HEALTH PLAN

Conference Center

DRIVING DIRECTIONS AND MAP

UPMC GATE - UPMC EVENTS CENTER AT ROBERT MORRIS UNIVERSITY



1. Enter campus from University Boulevard onto Campus Drive.
(The UPMC Events Center building will be directly in front of you.)
2. Continue on Campus Drive straight up the hill to the stop sign.
3. Turn left onto Massey Way.
4. Take the first left into the parking lot.
5. You'll see the "UPMC Events Center" sign and the RMU logo on the building.
6. Park your car, and proceed down the steps or sidewalk ramp to the "UPMC Gate."
7. Enter through two sets of glass doors.
8. The elevator is straight ahead; the staircase is on the right just behind the box office.
9. Proceed UP one level (floor 4 in elevator) to the UPMC Health Plan Conference Center.
10. After the event, proceed down one level (floor 3 in elevator) to depart.



UPMC EVENTS CENTER AT ROBERT MORRIS UNIVERSITY
6001 UNIVERSITY BOULEVARD, MOON TOWNSHIP, PA 15108