

FAIR

THE SHOW PLACE



VIEWS

OF AGRICULTURE

November 2011

Issue 34 | Number 4

Inside this issue . . .

President's Message

page 2

Legislative Update

page 3

Meet your NEW WSFA Directors

Page 4 & 5

Statewide Management Team Meeting & Super School

Page 6

Service Member Message

page 6

Convention contest Winners

Page 8 - 9

Photo's from Convention

page 10 - 13

Director Assignments

Back page



Meet Your 2011 – 2012 Washington State Fairs Association Board of Directors



(Left to Right)

John Morrison - Clark County Fair; Terry Atchison - Walla Walla County Fair; Dick Pulis - Grant County Fair; Penny Nelson, Service Member Director - Hazel's Diner; Kathi Mattinen - Cowlitz County Fair; Debbie Donk - Evergreen State Fair; Val Watson - 2010 - 2011 WSFA President and Adams County Fair; Rich Hartzell WSFA Vice President and Spokane Interstate Fair and Paul Nimmo, 2011 - 2012 WSFA President, Pierce County Fair and Washington State 4-H Fair



The Passing of the Gavel for 2011 – 2012
Paul Nimmo WSFA President receiving his Gavel
from Val Watson WSFA Immediate Past President
Thanks Val and Congratulations Paul!



Mark your Calendars for
WSFA Legislative Day Thursday,
January 12, 2012
Olympia, Washington
A great day to visit and share the
importance of your fair to your legislator!



PRESIDENT'S MESSAGE



The 2011 Convention was a great wrap up of what seems to have been a very positive 2011 Fair Season. A lot of folks deserve pats on the back for dedicating so much time and energy to Fairs.

The W.S.F.A. business meeting and board reorganization occurred on Friday, but it was not until Saturday, that it all hit. I read the program for what was the 100th

time and read the list of Past Presidents. What an assembly of dedicated individuals that have given so much to our industry. And now, after a year of tutelage from Val Watson, I only can hope that I am ready to represent something so dear to me... Washington Fairs.

This is where the President talks about planning for 2012 Fairs and Convention, if it only were that simple. Our industry is in crisis. For some reason, we are once again finding ourselves in a battle. The weapons are not made of steel or lead, but can cause deep wounds just the same.

In school, I learned about evolution and how the dinosaurs either adapted to the changing environment, or they simply faded away. Some began to walk upright; some grew feathers and took flight while others took to the oceans.

When I became involved with Fairs, another word I learned was "Tradition". I found that all Fairs are steeped in Tradition. As I have visited or come in contact with more and more Fairs, I have enjoyed learning about the history of each Fair's individual personalities and unique qualities.

Now I find myself seeing a relation between those two words, "Evolution" and "Tradition". For 2012, it is very evident that Fairs must continue to evolve and that may include the need to shed our traditional funding sources. While tradition is important, we must consider not always doing things in a traditional manner, but strive to find new and innovative ways to showcase tradition. Fairs will survive, even though we may look a little different afterwards, we are too important to too many people to simply fade away.

The Legislative Committee is already in full swing, and by the time you read this, you will already have been contacted by your W.S.F.A. representative. Please work with us to educate those who still do not understand the vital role Fairs play in our State's economy.

And finally, I would like to thank the W.S.F.A. Board, our Executive Secretary Gale, Legislative Liaison Heather Hansen and all those involved in this industry for allowing me to represent, work with, or even have a laugh with, during good and bad times. I look forward to the positives.

Paul Nimmo
WSFA President

2012 Washington State Fairs Association Board of Directors

PRESIDENT
Paul Nimmo 2007 - 2013
Position #3

Pierce County Fair and
Washington State 4-H Fair
5914 Gerlings Drive SW
Lakewood, WA 98499
Phone #: 253-584-3903
Cell #: 253-230-1502
Fax #: 253-572-3139
pauln@piercecountyfair.com

VICE PRESIDENT
Rich Hartzell 2009 - 2012
Position #6

Spokane Interstate Fair
404 N. Havana, Suite 1
Spokane Valley, WA 99202
Work #: 509-477-2770
Cell#: 425-327-7283
Home#: 509-276-1644
rhartzell@spokanecounty.org

IMMEDIATE PAST PRESIDENT
PRESIDENT

Val Watson 2004 - 2012
Position #7

Adams County Fair
996 East Yeisley Road
Lind, WA 99341
Home: 509-677-3536
Cell #: 509-750-6367
lavatson@lindwa.com

DIRECTORS
John Morrison 2011 - 2014
Position #1

Clark County Fair
17402 NE Delfel Road
Ridgefield, WA 98642
Phone: 360-397-6149
Fax: 360-397-6185
john.morrison@clark.wa.gov

Debbie Donk 2010 - 2013
Position #2

Evergreen State Fair
14405 179th Avenue SE
Monroe, WA 98272
Work #: 360-805-6705
Cell#: (425) 508-8603
Fax #: 360-794-8027
Debbie.Donk@snoco.org

Kathi Mattinen 2010 - 2013
Position #4

Cowlitz County Fair
1900 7th Avenue, Longview, WA 98632
Phone: 360-577-3121/Cell: 360-560-2109
Fax: 360-577-6254
mattinenk@co.cowlitz.wa.us
kathimattinen@hotmail.com

Terry Atchison 2011 - 2014
Position #5

Walla Walla Fair & Frontier Days
924 University St., Walla Walla, WA 99362
Phone: 509-529-8386
Cell #: 509-520-4276
terryatchison@msn.com

Dick Pulis 2010 - 2013
Position #8

Grant County Fair
4064 Cove West Drive
Moses Lake, WA 98837
Phone #: 509-764-2341
Fax#: 509-764-5213
Cell #: 509-760-2648
rhpulis@yahoo.com

WSFA SERVICE MEMBER DIRECTOR
Penny Nelson 2011 - 2013

Hazel's Diner
3305 Birchfield, Yakima, WA 98901
Phone: 509-961-9107
cornodoglad@netscape.com

WSFA Executive Secretary
Gale Sobolesky, CFE

Southwest Washington Fair
P.O. Box 914, 147 Kennicott Road
Chehalis, WA 98532
WSFA Office: 360-269-9971
Fax: 360-740-1478
Work #: 360-740-1495
Cell #: 360-219-6580
wastfair@comcast.net or
gale.sobolesky@lewiscountywa.gov

WSFA Legislative Lobbyist

Heather Hansen
120 Union Ave., Suite 201
Olympia, WA 98501
Day #: 360-705-2040
Fax #: 360-705-2018
heather@wafriends.org





LEGISLATIVE UPDATE from Heather Hansen

Governor Gregoire has released her budget proposal, which will be modified by the legislature when they convene for special session

on November 28. The proposal takes \$3 million out of the Fair Fund leaving almost nothing to be disbursed next spring.

The budget proposal states that her intent is to eliminate all funding for County fairs but preserve funding for community and youth fairs. Unfortunately, the remainder in the fund would be only about half of what is needed for community and youth fairs.

The legislature's only option during the special session is to cut spending. The current budget deficit is at least \$1.3 billion. The 2-year budget passed in May is no longer sustainable due to a continuing decline in revenue. Taxes can be only be raised with a two-thirds majority vote of the legislature or a vote of the people. Neither House of the legislature can get two-thirds of its members to vote for a tax increase. The soonest a proposal could be sent to a vote of the people would be February. So, further budget cuts must be made.

Once the special session begins, the legislature has 30 days to pass a balanced budget. When they convene for the regular session on January 9, 2012, they can, and most likely will, make further changes to the budget through both cuts in programs and increased taxes and fees.

Already some legislators are talking about the types of taxes they want to propose to increase revenue. Expect to see a proposal for an admissions tax that would be charged on gate admission, concert and rodeo tickets and events held year round.

It is going to take more than a phone call or an e-mail to save the Fair Fund this time. There are too many competing needs. To have hope for the future of the Fair Fund, each one of you will have to identify all three of your legislators

and meet with them. If fair staff and volunteers work together, you can meet with all three of your legislators. Talk about the impact on your community, the benefits to youth and to service organizations. The jobs provided and taxes paid by not only the fair itself, but by also all of your vendors. Reach out to suburban legislators through 4-H leaders and other volunteers.

Fairs have a great story to tell but it is going to take a major effort to be sure it is heard across the state. Legislators from urban areas are less likely to be familiar with fairs and how they benefit communities.

Reach out to Legislators before Thanksgiving:

1) Identify all three of your legislators. Your county may include more than one legislative district. In that case, you will have six or nine legislators to reach out to.

See: <http://apps.leg.wa.gov/DistrictFinder>

2) Make an appointment to meet with the legislator. It may help to gather a group together or to meet with the legislator during set hours. Their schedules are very busy.

3) Ask your fair manager for a list of community groups who participate in the fair. Ask some of them to come with you to meet the legislators and/or ask for stories about how they benefit from the fair. (For example, do they raise funds through a food booth that support other community programs?)

4) Ask your fair manager how many exhibitors and volunteers participate in your fair.

Remember that legislators have an incredibly difficult job to do. Be polite and understanding. Let legislators know how much you appreciate their efforts.

Heather Hansen
WSFA Lobbyist

Washington State Fairs Association Mission

"Washington State Fairs Association is dedicated to the success of Washington's Fairs through coordination, education, information, legislation and public support."

Meet Your NEW Washington State Fairs Association Directors



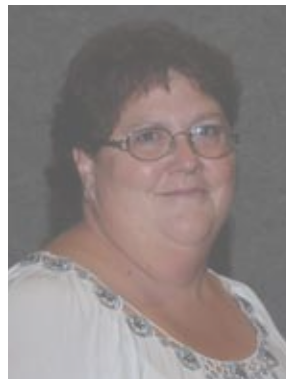
John R. Morrison, Jr.

West Side Position # 1

I was honored to be elected to the Board of Directors of the WSFA. I have been involved in the Clark County Fair continuously since 1992. After retiring in 1991 from a 28 year career flying in the United States Air Force, I became a volunteer at the Clark County

Fair and was elected to the Fair Board in 1993. I served 4 years as Vice Chairman and 6 years as Chairman and was named Volunteer of the Year in 2006. In 2008 I left the Fair Board to take the full time Fair Manager/CEO position. I was happy to do so as by then the Fair was deeply in my blood and the health and success of it was something I had long since committed myself to.

I solidly believe in Fairs and their enormous contribution to the communities they serve. Every WSFA member needs to constantly ensure that our elected representatives are aware of the value added aspect of the Fairs in this State. I want to work to preserve the agricultural core of our Fairs, keep them relevant and educate the public about how much more Fairs are than a day of entertainment.



Penny Nelson

Service Member Director

Penny Lynn Nelson, born Jan 9th 1962 to Hazel and Ray Nelson in Yakima Washington. I started in the food business at age 9. I washed dishes and bussed tables at the Horsemen's Kitchen located on the Central WA Fairgrounds. Mom and I

started in the fair industry Sept 1978, with a lil red barn my dad built into a concession. I was 14. Our first fair was Central WA State Fair, in 1979 Greg Stewart offered us the special events contract, if we got a mobile trailer. Spring of that year our house burned down and the banks were floored when mom asked for a loan for a food trailer, some wonderful friends gave us the loan, and that's how Hazel's Canadian Bacon Burgers were born. Working with the public was hard for me I was very shy. I often hid behind the scene, cooking and doing setup, mom and I made a great team, she was so social and out-going doing the promotional side and I made the food items she wanted to sell happen. Along with the concession business I have bartended, was food and beverage manager for Yakima Meadows race track and assistant food manager for the Sundome in Yakima. I have worked many wonderful places in this industry, Arizona, Nevada, Texas, Oregon, Idaho, Louisiana and Washington. On Labor Day 1985 coming out of the Kittitas Co. Fair my father got killed in a wreck. This tragedy had a real impact on my life. I realized the fair industry was more than a job, it was a family, and so many people came forward and offered their support and love. Hazel, passed 2 years ago and again life has changed drastically, the business is now mine and I have huge shoes to fill... Personally I enjoy black and white horror movies, Charlie Chan and Sherlock Holmes. My favorite flower is lilies and I love to sing. In my off season I work for a local caterer in Yakima and enjoy learning new ways to prepare food, which someday I hope to use all my knowledge and have my own diner, doing catering on the side.

ATTENTION - SERVICE MEMBERS

2012 WSFA DUES AND FAIRVIEWS ADS IF

YOU HAVEN'T PAID YOUR 2012 WSFA DUES, OR

FAIRVIEWS ADS INVOICE PLEASE DO SO TODAY.

PLEASE SEND \$125.00 FOR YOUR DUES AND \$100.00

FOR YOUR FAIRVIEWS Ad (WSFA, P.O. Box 914,

CHEHALIS, WA 98532.) WE WILL BE SENDING OUR

REMINDER INVOICES LATER THIS MONTH. IF YOU HAVE

QUESTIONS CALL GALE AT 360-269-9971.



Terry R. Atchison
Eastside Position #5

I am a lifetime resident of Walla Walla attending local schools in the area. After high school I served three years in the United States Army. When I returned home from my tour in Vietnam, I began working at the US Army

Corps of Engineers as a civilian, in the Information Management Office as a branch and project manager.

I retired in 2010 with 40 years from the US Army Corps of Engineers, as well as completed 28 years with the US Army and Army Reserves. Over the years, I have been active with several local non-profit organizations, which ultimately has given me working knowledge of different boards and how the people within the organizations function.

My history with the Walla Walla Fair started in 1960 when I followed my grandfather around and did odd jobs within the fair. In 1962, I became a seasonal employee working under my grandfather; cleaning the grandstands, picking up rocks on the track, mowing the lawn and cleaning out the barns. Over the years, I helped my grandfather with placement of the vendors and did some security. In 1974, I took over for my grandfather and continued to further my diversity within the fair, working with the vendors and carnival directly.

In 1999, I was elected to the Walla Walla Fair and Frontier Days fair board. I served the board as secretary for three years and president for two years. Over the nine years that I served on the board we brought in strategic planning, encouraged the board members to take an active role in the fair events upgraded the fair grounds to present capacity. In 2008, after serving my term on the fair board, I joined the Walla Walla Frontier Days Foundation board. I not only have served on these boards but continue to take an active role in the fair each year.

I look forward to serving on the Washington State Fair Association and using my experiences to help and enhance the fairs across the state.



ATTENTION - FAIRS

Please send us your Fair Dates for 2012

To help us prepare for the creation of the 2012 Washington State Fair Dates brochure, our website and membership Roster we would like to gather your 2012 and 2013 Fair Dates. We want to have this posted on our website as soon as possible. Please help us obtain this information by emailing your information to wastfair@comcast.net or send to WSFA 2012 Fair Dates, P.O. Box 914, Chehalis, WA 98532. Thank you for your attention to this important detail. Thank you if you have already supplied this information to us! We will also be emailing your Roster Listing to you for updating please return this as soon as possible.

WSFA Board of Directors wishes to Thank our:

Sponsors for their Support of the 2011 WSFA Convention

- Butler Amusements, Inc.
- Davis Amusements Cascadia
- Davis Shows NW
- Indiana Ticket Company
- Jeff Fulks Photography
- Paradise Amusements
- Regalia Manufacturing
- Romeo Entertainment Group
- Rocky Mullen – Got Bull Entertainment

Host Fairs who provided the Table Decorations for our Meals

- Evergreen State Fair
- Pierce County Fair
- Okanogan County Fair
- Thurston County Fair
- Adams County Fair
- Cowlitz County Fair
- Castle Rock Fair

Convention Registration Desk Volunteers

- LeRoy Watson
- Billie Clary

Thank you, Thank you, Thank you!



Service Member Message . . .

Hello fellow service members,

I am very honored and proud to be the new service director. I hope to work side by side with as many as I can to bring our needs to the table. The last day

of convention I had the pleasure of talking to a few of you, your ideas were great, please keep them coming. I feel we're a team and I speak for you. My first meeting went well, I listened more than talked to get a feel of where we are right now. I'm playing catch up with the legislative end, but am excited to learn how it works, because without the fairs we have no business. I have big shoes to fill; we have had some great directors through the years. Tammy has offered her support where needed, and is truly appreciated, just hope my endless questions don't send her running. After meeting the rest of the board, I'm confident great strides will be made in 2012.

Thank You

Penny Nelson



New Service Member

Staff Pro. Inc.

Bill Parsons

2727 East "D" Street
Tacoma, WA 98421

Phone: 253-274-8320

Fax: 253-274-8321

Email: bparsons@staffpro.com

Website: staffpro.com

Provides crowd management, parking, traffic, ushers, ticket takers, guest services for fairs, festivals, trade shows, facilities and special events.

STATEWIDE MANAGEMENT TEAM MEETING AND SUPER SCHOOL

Friday, March 16, 2012 (1:00pm)

WSFA Management Team Meeting

Indian Longhouse

Evergreen State Fairgrounds, Monroe, WA

Saturday, March 17, 2012 (8:30am-4:00pm)

WSFA Statewide Super School

4H Building

Evergreen State Fairgrounds, Monroe, WA

Get these dates on your calendar! We had a great workshop at the convention - thank you to those who attended. Got an idea for a speaker, classes, workshops or training? Let us know as soon as possible! Look for more information in the

January newsletter.

Thanks,

WSFA West Side Team Board Members

Debbie Donk, WSFA Director

Paul Nimmo, WSFA President

Kathi Mattinen, WSFA Director

Special Thanks to **Romeo Entertainment Group**

for Sponsoring the
Trade Show Breaks
during the
2011 WSFA Convention.

We thank you for your Support!

WSFA CONVENTION - CONTEST WINNERS

Poster, Hat, T-Shirt, Website and Scrapbook

Information Poster

Category

A	1st	Pend Oreille County Fair
	2nd	Wahkiakum County Fair
	3rd	Castle Rock Fair
B	1st	Island County Fair
	2nd	Jefferson County Fair
C		No entries
D	1st	Southwest Washington Fair
E	1st	Clark County Fair
	2nd	Evergreen State Fair
	2nd	Northwest Washington Fair
	3rd	Benton Franklin Fair
	3rd	NW WA Fair
	3rd	Puyallup Fair

Artistic Poster

A	1st	Castle Rock Fair
	2nd	Columbia County Fair
	3rd	Wahkiakum County Fair
B	1st	Clallam County Fair
	2nd	Okanogan County Fair
	3rd	King County Fair
C	1st	Grays Harbor Fair
D	1st	Kittitas County Fair
	2nd	Southwest Washington Fair
E	1st	Benton Franklin Fair
	2nd	Spokane Interstate Fair
	3rd	Evergreen State Fair

Service Member Entry

C	1st	Main Street Cowboys
---	-----	---------------------

Hat Contest

A		No Entries
B	1st	Island County Fair
C		No Entries
D	1st	Kittitas County Fair
	2nd	Walla Walla Fair & Frontier Days
E	1st	Puyallup Fair
	2nd	Benton Franklin Fair

Best of Show - Hat Contest

Puyallup Fair

T-Shirt Contest

A	1st	Castle Rock Fair
	2nd	Pend Oreille County Fair
	3rd	Columbia County Fair
	3rd	Wahkiakum County Fair
B	1st	Okanogan County Fair
	2nd	Clallam County Fair
	3rd	Island County Fair
C		No Entries
D	1st	Southwest Washington Fair
	2nd	Kittitas County Fair
E	1st	Clark County Fair
	2nd	Spokane Co Interstate Fair
	3rd	Evergreen State Fair

Best of Show - T-Shirt Contest

Clark County Fair

Website

A		No entries
B	1st	Pierce County Fair
	2nd	Clallam County Fair
	3rd	Okanogan County Fair

Honorable Mention – Jefferson County Fair

C		No Entries
D	1st	SW WA Fair
	2nd	Kittitas County Fair
E	1st	Evergreen State Fair - Amateur
	1st	Central WA State Fair - Professional
	2nd	Northwest Washington Fair - Professional
	3rd	Clark County Fair – Professional

Scrapbook Contest

A	1st	Castle Rock Fair
B	1st	Pierce County Fair
	2nd	King County Fair
	3rd	Clallam County Fair
C, D and E		No Entries

Sweepstakes Award

Castle Rock Fair

Washington State Fairs Association Vision

“Leading Washington Fairs in successfully meeting the changes and challenges of the 21st Century.

THANK YOU!

THANK YOU! THANK YOU!



To all of my WSFA Directors, Adams County Fair Board, and to all of the WSFA Membership, I could not have gotten to do what I did without all of you people supporting me. I have learned a lot throughout my time spent on the state board and feel more confident about myself. I have had some great mentors along the

way as well and a special thank you to all of you who have helped me. Of course, to LeRoy, always a very special thanks for all of your support. I definitely could not have done this without you by my side.

I really had a great time at convention this year and hearing feedback from some of you, it sounds like you did as well. We have some new directors at the helm now and I feel very confident that they will do a great job. I'm still looking forward to next year to come up with a few more ideas to help make this convention better.

We will be heading down to Las Vegas in December again for the IAFE Convention. If you have not gone yet, you surely should. They have great workshops, lots of networking with others and a huge tradeshow. Speaking of tradeshows please be sure that we support our own tradeshow WSFA members at our fairs. We need to support them.

Coming up in the future for our WSFA Association, we will be keeping you posted on where our legislative actions are going and what we want all of you to do.

Here is a quote from the Dalai Lama for something to think about.

"The Dalai Lama, when asked what surprised him most about humanity, answered "Man. Because he sacrifices his health in order to make money. Then he sacrifices money to recuperate his health. And then he is so anxious about the future that he does not enjoy the present; the result being that he does not live in the present or the future; he lives as if he is never going to die, and then dies having never really lived."

So think about this and enjoy life along the way and enjoy your family. Treat life good and know your family always comes first, enjoy your life and make your fair the best darn fair there is. Thanks again for all of your support this past year. I have learned a lot throughout this time spent and am always ready to learn and do some more.

Love to All,

Val Watson

WSFA Immediate Past President



*We wish you a Happy Thanksgiving
with your family and friends. Enjoy!*



The Amazing World of Brad Byers
NBC's America's Got Talent
Guinness World Record Holder
Ripley's Believe It or Not

**EXTREME SIDE SHOW, CIRCUS ACTS,
SKILL TOYS: YO-YO "GRANDMASTER"**

Moscow, Idaho
(208) 596-5011
bradbyers@bradbyers.com

A photograph of Brad Byers, a man with short dark hair, looking upwards and holding a yo-yo in his mouth. The yo-yo is a long, thin, multi-colored object.

www.bradbyers.com

WASHINGTON STATE FAIRS ASSOCIATION CONVENTION

PHOTO CONTEST WINNERS

October 20 – 22, 2011 – Yakima Convention Center, Yakima, WA

A – CARNIVALS – COLOR

1ST PLACE EVERGREEN STATE FAIR -- ROBERT KASH
2ND PLACE PUYALLUP FAIR -- PATRICK HAGGERTY
3RD PLACE CLALLAM COUNTY FAIR -- LAURIE DAVIES

A – CARNIVALS – BLACK & WHITE

1ST PLACE KITSAP COUNTY FAIR -- MIKE BAY
2ND PLACE CLALLAM COUNTY FAIR -- NANCY ORTOWSKI
3RD PLACE BENTON FRANKLIN FAIR -- MARGARET FULKS

B – CONTESTS & GAMES COLOR

1ST PLACE EVERGREEN STATE FAIR --
ROBERT KASH -- RU SWEEPSTAKES
2ND PLACE EVERGREEN STATE FAIR -- ROBERT KASH
3RD PLACE THURSTON COUNTY FAIR -- PAUL HENDERSON

B – CONTEST & GAMES BLACK & WHITE

1ST PLACE CLALLAM COUNTY FAIR -- LAURIE DAVIES
2ND PLACE KITSAP COUNTY FAIR -- JIM HANEY
3RD PLACE CLALLAM COUNTY FAIR -- NANCY ORTOWSKI

C - ANIMALS -- COLOR

1ST PLACE KING COUNTY FAIR -- JUDITH FELKER
2ND PLACE NORTHWEST WA FAIR --
DAVID WILLOUGHBY
3RD PLACE CLARK COUNTY FAIR -- ZACHARY KAUFMAN

C – ANIMALS -- BLACK & WHITE

1ST PLACE BENTON FRANKLIN FAIR --
M. FULKS - RU SWEEPSTAKES
2ND PLACE BENTON FRANKLIN FAIR -- MARGARET FULKS
3RD PLACE BENTON FRANKLIN FAIR -- MARGARET FULKS

D -- KIDS -- COLOR

1ST PLACE PUYALLUP FAIR -- PATRICK HAGGERTY
2ND PLACE KING COUNTY FAIR -- JUDITH FELKER
3RD PLACE EVERGREEN STATE FAIR -- ROBERT KASH

D - KIDS --BLACK & WHITE

1ST PLACE BENTON FRANKLIN FAIR -- MARGARET FULKS-
SWEEPSTAKES
2ND PLACE CLALLAM COUNTY FAIR --
NANCY ORTOWSKI
3RD PLACE KITSAP COUNTY FAIR -- JIM HANEY

E – SENIOR CITIZENS -- COLOR

1ST PLACE BENTON FRANKLIN FAIR --
MARGARET FULKS
2ND PLACE PUYALLUP FAIR -- KRISTIN WEEKS
3RD PLACE CLALLAM COUNTY FAIR --
NANCY ORTOWSKI

E – SENIOR CITIZENS -- BLACK & WHITE

1ST PLACE KITSAP COUNTY FAIR -- JIM HANEY
2ND PLACE BENTON FRANKLIN FAIR -- JEFF FULKS
3RD PLACE CLALLAM COUNTY FAIR -- LAURIE DAVIES

F – ENTERTAINMENT -- COLOR

1ST PLACE JEFFERSON COUNTY FAIR -- JUDY SIMONS
2ND PLACE NORTHWEST WA FAIR --
DAVID WILLOUGHBY
3RD PLACE NORTHWEST WA FAIR -- BERNIE VOS

F – ENTERTAINMENT -- BLACK & WHITE

1ST PLACE CLALLAM COUNTY FAIR -- LAURIE DAVIES
2ND PLACE CLALLAM COUNTY FAIR -- LAURIE DAVIES
3RD PLACE EVERGREEN STATE FAIR -- ROBERT KASH

G - RODEOS --COLOR

1ST PLACE KITSAP COUNTY FAIR -- RON RODGERS -
SWEEPSTAKES
2ND PLACE KITSAP COUNTY FAIR -- MIKE BAY
3RD PLACE NORTHWEST WA FAIR --
DAVID WILLOUGHBY

G - RODEOS --BLACK & WHITE

1ST PLACE KITSAP COUNTY FAIR -- MIKE BAY
2ND PLACE NCW DISTRICT FAIR -- ASHLEE PREY
3RD PLACE CLALLAM COUNTY FAIR -- NANCY ORTOWSKI

H – GENERAL INTEREST -- COLOR

1ST PLACE ISLAND COUNTY FAIR -- MOLLY KAY
2ND PLACE THURSTON COUNTY FAIR --
PAUL HENDERSON
3RD PLACE ISLAND COUNTY FAIR -- JUDI SLEPYAN

H – GENERAL INTEREST -- BLACK & WHITE

1ST PLACE NORTHWEST WA FAIR --
DAVID WILLOUGHBY
2ND PLACE CLALLAM COUNTY FAIR -
NANCY ORTOWSKI
3RD PLACE KITSAP COUNTY FAIR -- JIM HANEY

BEST CAPTION:

Island County Fair “And what do you want?”

THE 248 PHOTOS ENTERED ARE FROM:

BENTON FRANKLIN FAIR, CLALLAM COUNTY FAIR
CLARK COUNTY FAIR, EVERGREEN STATE FAIR
ISLAND COUNTY FAIR, JEFFERSON COUNTY FAIR
KING COUNTY FAIR, KITSAP COUNTY FAIR
NCW DISTRICT FAIR, NORTHWEST WASHINGTON FAIR
PUYALLUP FAIR, SOUTHWEST WA FAIR
THURSTON COUNTY FAIR

PHOTOS WERE JUDGED BY: JIM JOHNSON,

JIM'S IMAGES - TACOMA, WA

PHOTO CONTEST CHAIR:

Betty Backstrom, Pierce County Fair

THANKS TO ALL WHO HELPED PUT UP
THE PHOTO DISPLAY!!

***THANK YOU TO ALL THE FAIRS WHO
ENTERED OUTSTANDING PHOTOS!!***

Glimpses from the 71st Washington State Fair Association Convention October 20 – 22, 2011

*Photos by Jeff Fulks Photography
Benton Franklin Fair & Rodeo*



*Ann Shipley and Beth Sartain from the
Thurston County Fair*



Travl'n Opry - Bruce and Betsy Mullen



Attendance Awards

*Youth Shows - Washington State 4-H Fair – Anita Mastin
County Fairs – Northwest Washington Fair – Jim Baron
Community Fairs – Kalama Community Fair – Not Pictured*



*President Val awarding the Northwest Washington Fair
(Jim Baron accepting) the Best Corn Dog Award*



Service Members of the Year

Pat and Geraldine Davis, Davis Shows NW

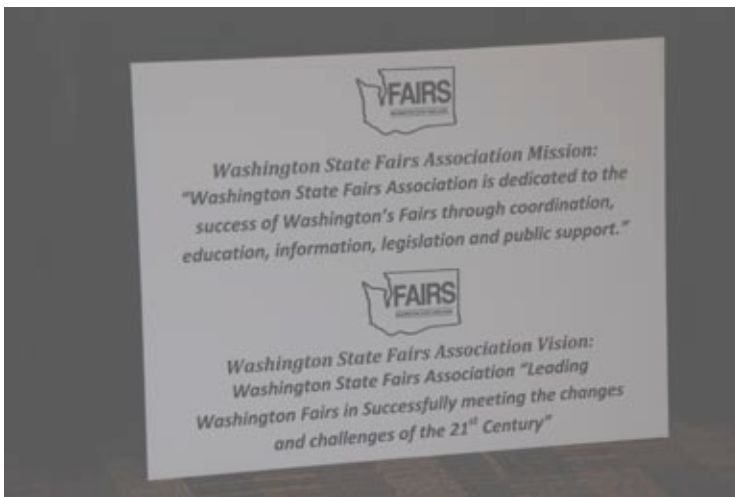
Awarded by Deni Hermann

Mike and Cathy Davis, Davis Amusement Cascadia



New Service Member

Creagle Concessions - Faith Haney and Ed Hancock



WSFA Mission and Vision Statements



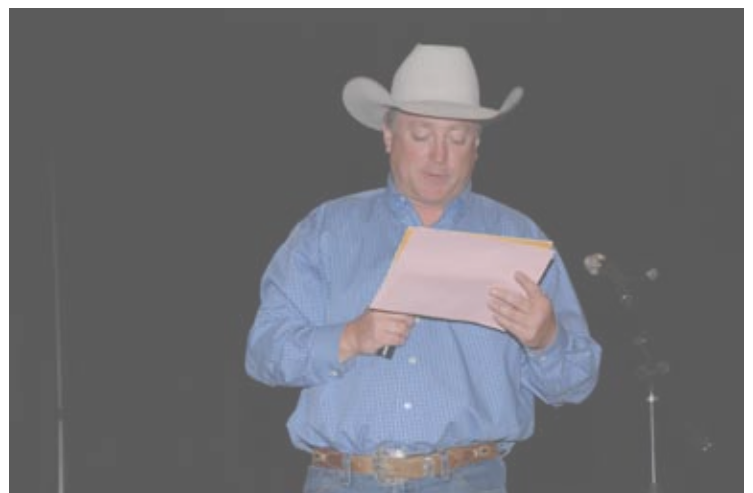
Past President Mark Campbell visiting with

Ron Burback, President Funtastic Shows



New Service Member

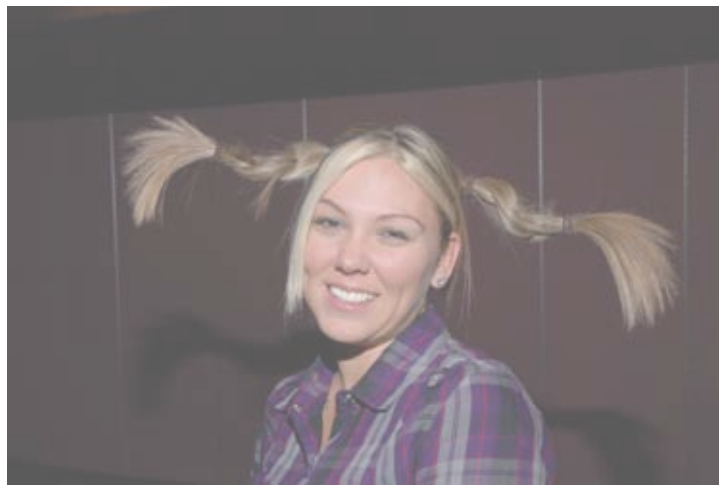
Wool Busters – Frank and Brenda Rendon



Our Auctioneer – Rocky Mullen – Thank you Rocky!



*Davis Amusements Cascadia and
Davis Shows Northwest
WSFA Service Members of the Year*



Sara Renee from the Benton Franklin Fair and Rodeo



*Greg Stewart Central WA State Fair sharing a hug with
President Val Watson while visiting with
Karen Quest of Cowgirl Tricks.*



2011 Scrapbook Judges and Winners



*John Dunnigan and Rob Stuverud
LeapFrog Entertainment*



Sound Engineering Audio - Susan Holderman



*Incoming President Paul Nimmo presenting the
President's Award to Val Watson*



The Colorful Booth of Professor Bamboozle



New Service Member

Jerry Breeden Ventriloquist and Friend



*WOW! The Magic, Skill and Talents of
Paul Isaak*



Val and LeRoy Watson

Thank you both for a great WSFA year!



Michael Mezmer
Comedy Hypnotist
(951) 315-1942

Pat & Geraldine Davis



DAVIS SHOWS N.W.

(503) 631-3093 or 631-7853
Cell (503) 310-1403 or 539-4526
Shop (541) 483-2247
Fax (888) 847-8512

A TRUE NORTHWEST
CARNIVAL EXPERIENCE

P.O. Box 1670 • Clackamas, OR 97015
E: davisshowsnw@aol.com Web: davisshowsnw.com

Hazel's Diner
Home of the
Famous Canadian
Bacon Burger

Penny Nelson
Owner - Chef

Phone: 509-961-9107
Email: comdoglady@netscape.com



ALL EVENTS
CATERING

Fair Concessions, Catering, Private Parties, Kid's Parties, Birthdays, Anniversaries, Luau's, Wine Tastings, Christmas, New Year's.

You name it - We'll cook it



Davis Amusement Cascadia

P.O. BOX 1585
CLACKAMAS, OREGON, 97015
PHONE: (503) 807-2154
888-201-9304
www.davisamusement.com

Mike & Cathy Davis

CARICATURES
TOM "HUF" HOFSTEDT



FASTEST PEN in the WORLD!

2819 Claremont Dr. N., Tacoma, WA 98407
(253) 752-8389 E-mail: tomhuf@tomhuf.com

Cascade Amusements

A Full Service Carnival
"Your Commitment to Excellence"

1521 N. Jantzen Ave., #413
Portland, OR 97217
Phone: 503-927-4657
cascadeamusements@comcast.net

FUNTASTIC




RON BURBACK
President

Traveling Shows
Just possibly... The world's finest Carnival.

3407 S.E. 108th Ave.
Portland, OR 97266
(503) 761-0989 7:00a.m. - 3:45 p.m. daily

MAURICE A. HAWORTH



HAWORTH FAMILY SHOWS

3104 NE Glisan St.
Portland, OR 97232 (503) 522-6055
Email: hfscarnival@aol.com Cell: (360) 253-0343

RENTALS • BIG TOPS • CANOPIES • DECORATING

Rowan FULL SERVICE
Event Services FAIR DECORATING SPECIALISTS



www.rowaneventservices.com
3637 Thorndyke Ave W Phone (206) 367-1800
Seattle, Washington 98119 Fax (206) 367-1890

ERIC HAINES



COMEDIAN
ONE MAN BAND
STILT WALKER
COMEDY JUGGLER

COMEDYROCKET.COM
eric@comedyrocket.com

MOTOROLA RADIO RENTALS

From two to hundreds of units.
Matched to your frequencies or ours.

EVENT RENTAL COMMUNICATIONS, INC.

1024 NE Davis Street
Portland, OR 97232
1-503-232-9031



Marsalee's Thai Foods

Serving Great Food at Fairs & Festivals Since 1979

Marvin Marion & Family
P.O. Box 560 360 / 484-7702
Naselle, WA 98638-0560 Fax 360 / 484-3753
Email: mmarion@wwest.net Mobile 503 / 791-7601

ABBEY
PARTY RENTS

A Decoration & Service Contractor
For Fairs, Festivals & Special Events

Tents • Canopies • Flags & Bunting
• Fabric Booths • Electrical

Adam Puente

Phone: (206) 362-3222
(800) 89 Abbey
1310 North 131st Street
Seattle, WA 98133 Fax: (206) 362-1322
Email: adamp@abbeypartyrents.com

STAGES NORTHWEST, INC.

ROBERT ZAVADA
President

PO Box 22229
Milwaukie, OR 97269
TEL - 971-212-0284
FAX - 503-342-6029
E-mail - zbob@stagesnorthwest.com




COSMO
THE BALLOON WIZARD

(360) 735-7186
www.cosmo.balloonhq.com
cosmo@balloonhq.com

World Class
Balloon Entertainment

KID TESTED - PENTAGON APPROVED!



Zack Krupp
RENTAL COORDINATOR

206.624.6332 ext. 213
206.682.0211 (FAX)
206.510.2181 (CELLULAR)
zkrupp@daywireless.com

430 Dexter Avenue North
Seattle, WA 98109-4703
www.daywireless.com

THE HOT SHOT TAP DANCERS

Carl
Lloyd
Kyle

503-364-3447

tapslap@hotmail.com

www.hotshottapdancers.com

Young professionals providing great entertainment for your event!



Joe Black

Magician and Hypnotist

(425) 516-1391

JosephBlack1@hotmail.com

Myspace.com/josephblackentertainment



RUSS PEAK
COMEDY HYPNOTIST
& MAGICIAN

800.381.5858
www.HypnotizeMe.com



ALLIED
SPECIALTY INSURANCE

800.237.3355 www.alliedspecialty.com

The **CUTE** Show on Earth!

Let's Pretend
Entertainment

ELISA HAYS
Managing Director
elisa@cutestshow.com
(253) 278-6410

www.cutestshow.com
2720 23rd Avenue SE • Puyallup, WA 98372



HAAS & WILKERSON
INSURANCE

Insuring Your Success
800.821.7703 or 913.432.4400
www.hwins.com



HARLAN FAIRBANKS CO. LLC
Concession Equipment and Supplies
Terry Stewart

20119 59th Place S. #102 Tel. (253) 872-4941
Kent, Washington 98032 1-800-848-0150
email: terry@harlanfairbanks.com Fax (253) 872-4926



NW
GOLF CARTS, INC.
Sales • Service • Rentals

Phone: 360-757-2233
Fax: 360-424-7649
info@NWgolfcarts.com
www.NWgolfcarts.com

4128 Cedardale Road, Suite 101
Mount Vernon, WA 98274

LIZ GREGORY TALENT
& PRODUCTIONS

9 Music SQ. SO. STE. 357
Nashville, TN 37203
1-888-455-7549
615.885.9513
615.885.9552 FAX
615.414.3498 CEL
Email: GregoryTalent2@aol.com
www.LizGregoryTalent.com



Liz Gregory
Agent/Producer



Brad's
WORLD REPTILES

Brad Tylman
541-745-7626
service@bradsworldreptiles.com
www.bradsworldreptiles.com
Corvallis, Oregon



Zoo-quality, live animal
Educational Exhibits
Captivating exotic animal
Stage Shows
Interactive, entertaining
Corporate Events



John
Dunnigan

P.O. Box 1353
Whitefish, MT 59937
(406) 862-0809
music@johndunnigan.com
www.johndunnigan.com

ACTUAL SIZE

"From Rockability to Rhinestones"
The Illusion of Elvis Tribute
Starring Danny Vernon



P.O. Box 197
Milton, WA 98354-0197
Phone: 253.691.5450
www.dannyvernon.com
dannyvernon@hotmail.com

Paradise
Amusements

Sherry McKay
Owner

888-699-7052 (toll free)
206-660-6829 Cell
206-691-9955 Fax
PO Box 1129
Cove of Alsea, OR 97106
ParadiseAmusements@gmail.com
www.paradisemusements.com



Mark your Calendars for
WSFA Legislative Day Thursday,
January 12, 2012
Olympia, Washington
A great day to visit and share the
importance of your fair to your legislator!



Know what's below.
Call before you dig.

Please support these Service Members!

2012 Directors Assignments

WESTSIDE

John Morrison Position 1

Camas-Washougal Community Fair*
Clark County Fair ~ Island County Fair
Lewis County Youth Fair ~ Mason County Fair
Southwest Washington Fair ~ Thurston County Fair
Washington Junior Poultry Expo ~ Western Washington Fair

Debbie Donk Position 2

Enumclaw Jr. Dairy Show ~ Evergreen State Fair
Northwest Washington Fair ~ Puget Sound Junior Livestock Show
San Juan County Fair ~ Silvana Community Fair
Skagit County Fair Stanwood ~ Camano Community Fair
Whatcom County Youth Show

Paul Nimmo Position 3

Castle Rock Fair ~ King County Fair
Lacamas Community Fair ~ Northwest Junior Livestock Show
Pacific County Fair Pierce County Fair
Puyallup Spring Fair ~ Rose Valley Community Fair*
Washington State 4-H Fair Washington State FFA Exhibition
Washington State FFA Spring Fair

Kathi Mattinen Position 4

Clallam County Fair ~ Cowlitz County Fair
Grays Harbor County Fair ~ Jefferson County Fair
Kalama Community Fair ~ Kitsap County Fair
Skamania County Fair ~ Wahkiakum County Fair

EASTSIDE

Terry Atchison Position 5

Chelan County Fair ~ Ferry County Fair ~ Grant County Fair
Kittitas County Fair ~ North Central Washington District Fair
North Central Washington Junior Livestock Show
Northwest Junior Sheep Exposition ~ Northeast Washington Fair
Okanogan County Fair

Rich Hartzell Position 6

Clayton Community Fair ~ Ferry County Fair
Garfield County Fair ~ Hunters Community & 4-H Fair
Palouse Empire Fair ~ Pend Oreille County Fair
Southeast Spokane County Fair ~ St. John Community Fair
Spokane Interstate Fair ~ Spokane Junior Livestock Show
Valley Community Fair ~ West Plains Community Fair

Val Watson Position 7

Adams County Fair ~ Asotin County Fair
Central Washington State Fair ~ Colton Community Fair
Columbia County Fair ~ Klickitat County Fair
Lincoln County Fair ~ Wheatland Communities Fair

Dick Pulis Position 8

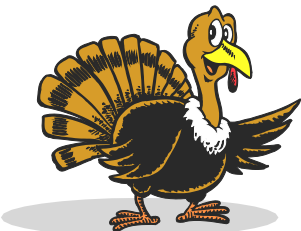
Benton-Franklin Fair & Rodeo
Central Washington Junior Livestock Show
Central Washington State Fair
Columbia Basin Junior Livestock Show ~ Kittitas County Fair
Waitsburg Junior Livestock Show ~ Walla Walla Frontier Days
West Valley Community Fair ~ Yakima Valley Fair & Rodeo

*currently not holding a fair event

FAIR VIEWS



Washington State Fairs Newsletter
P.O. Box 914
Chehalis, WA 98532



We wish you a Happy Thanksgiving!

