



# RECREATION CONNECTION

**Wasatch Recreation Center**  
**345 West 600 South, Heber**  
**(435) 657-3240**  
**www.wasatchparksandrec.com**

**Summer Hours**  
**Monday- Friday 5:30 a.m.—8:00 p.m.**  
**Saturday 7:00 a.m.—5:00 p.m.**  
**CLOSED SUNDAYS**

**2022**

## SUMMER BASKETBALL CAMP

Reach Higher Athletics is a high level basketball training program based out of St. George, UT. We focus on advanced skill development, while also teaching kids how to be successful off the court. Camp will be held at Rec. Center.

### Schedule (July 5,6,7 )

		<b>Cost</b>
<b>K-2<sup>nd</sup> Grade</b>	9:00 am- 10:00 am	\$55
<b>3<sup>rd</sup>- 5<sup>th</sup> Grade</b>	10:15 am- 11:45 am	\$69
<b>6<sup>th</sup>- 8<sup>th</sup> Grade</b>	12:00 pm- 1:30 pm	\$69

Spots are limited!! Sign up today at  
[www.wasatchparksandrec.com](http://www.wasatchparksandrec.com)

## SOCCER CAMP

This soccer camp is meant for all levels of play and is going to focus on helping your child have fun! Coached and led by experienced soccer players that have played from high school to college. Camp will be held at Rec. Center.

**Camp Dates:** Session 1: June 6– 9 Session 2: July 11– 14

Ages 4-5.....	\$40	4-5 yrs. Old:	8:00- 8:45am
Ages 6-7.....	\$40	6-7 yrs. Old:	9:00- 10:00am
Ages 8-10....	\$50	8-10 yrs. Old:	10:00- 11:00am
Ages 11-13...	\$50	11-13 yrs. Old:	11:00am- 12:00pm

## JEWELRY CLASS

Come make your own Jewelry! The class will be held at the Wasatch Rec. Center and will teach basic jewelry making techniques in using beads, charms, and clasps.

Spots are limited, register at the Rec. Center or Online.

Cost is \$15 for the class and includes all supplies.

Ages 6 years old and up

Spots are limited!

Tuesday, June 14<sup>th</sup> 10:00-11:00 am

Wednesday, June 15<sup>th</sup> 10:00-11:00 am

## GYMNASTICS

Session 1: June 1– 23  
Session 2: July 6– 28  
Session 3: August 3– 25  
All classes begin on their respective days in the session

Age	Level	Days, Times & Cost
Mommy or Daddy & Me- Boys and girls 2-3 years old	Introductory	<b>Wednesday</b> 9:00- 9:35am, 9:45- 10:20am <b>Thursday</b> 9:00- 9:35am, 9:45- 10:20am <b>COST: \$48</b>
Preschool- Boys and girls 3-5 years old	Introductory	<b>Wednesday</b> 10:30- 11:20am, 4:00- 4:50pm or <b>Thursday</b> 10:30- 11:20am, 5:10- 6:00pm <b>COST: \$63</b>
Kindergarten- Boys and girls 5-6 years old	Introductory	<b>Wednesday</b> 11:30am- 12:30pm, 4:00- 5:00pm, 5:00- 6:00pm, or <b>Thursday</b> 11:30am- 12:30pm, 4:00- 5:00pm, 5:00- 6:00pm <b>COST: \$72</b>
Girls- 6-8 yrs. old	Beginning	<b>Wednesday</b> 4:00- 5:00pm, 5:00- 6:00pm or <b>Thursday</b> 4:00- 5:00pm, 5:00- 6:00pm <b>COST: \$72</b>
Girls- 8-12+ yrs. old	Intermediate	<b>Wednesday</b> 5:00- 6:00pm, or <b>Thursday</b> 4:00- 5:00pm <b>COST: \$72</b>
Boys- 6-12+ yrs. old	Beginning	<b>Wednesday</b> 6:00- 7:00pm <b>COST: \$72</b>
Girls Bonze/ Silver- 6- 12 yrs. old	Required for those previously enrolled in class	<b>Wednesday</b> 6:00- 7:30 or <b>Thursday</b> 6:00- 7:30pm <b>COST: \$85</b>
Girls Gold/ Platinum- 7-14 yrs. old	For those previously enrolled in class	<b>Thursday</b> 6:00- 8:00pm <b>COST: \$117</b>
Boys Intermediate/Gold- 7-14 yrs. old	For those previously enrolled in class	<b>Wednesday</b> 7:00- 8:00pm <b>COST: \$72</b>



## MEMORIAL DAY REMEMBER AND HONOR

MONDAY, MAY 30, 2022  
8:00 A.M.— 8:00 P.M.  
VETERAN'S MEMORIAL PARK  
415 S 600 W  
DRIVE-BY TRIBUTE ALONG VETERANS MEMORIAL PARK ROAD (600 W)

## FALL MEN'S SOFTBALL

Parks and Recreation will be offering a Fall Men's Softball league this year. Games will be played on Thursday nights August 25th– End of September. Games will most likely be 6:30,7:30, 8:30, or 9:30pm. Season will be followed by a tournament. Space is limited to the first 12 teams. Teams can **register online or at the Rec Center** and must pay the full \$350 (**non refundable**) to enter the league. **Registration** for the league will start **Monday, June 6th and run thru August 14th.** **Free Agents–** Anyone who is interested in playing men's softball, but does not have a team, call Taylor at 657-3240 and get your name on the "Free Agent" list which will be given to team managers!

## SUMMER TENNIS CAMP

**CAMP DATES:**  
**Session 1:** June 13th - 16th, **Session 2:** June 20th - 23rd  
**Session 3:** June 27th - June 30

All camps taught at the Rec. Center. Camps are meant to give an introduction to beginning tennis players. Campers bring a tennis racquet.

**1st-3rd Grade 11:30am-12:30pm Cost: \$60**  
**4th-9th Grade 10:00am-11:30am Cost: \$92**

## SUMMER LACROSSE CLINIC

Come and learn or better your skills in the game of Lacrosse. Clinic will be coached by college Lacrosse players and former Wasatch High Players.

**Session 1 is for 11-14 Year olds** will run for two weeks. June 14 -15 – 16 and June 21 -22- 23, form 8:00-9:30am. Cost \$75.

This group of players will need to have full gear and pads. Please bring your own.

**Session 2 is for 6 – 10 year olds** will run from June 14 -15 – 16, from 9:30 – 10:30 am. Cost \$30.

This group of players will need a stick, helmet, and gloves

Clinic will be held at 520 South 300 West Veterans Memorial Park East side.



## SUMMER SCIENCE CAMP

It's time to blast off with Mr. Welling, the Wasatch High school physics teacher. Every day of the camp the kids will be building and launching different types of rockets (paper, bottle, and straw rockets). Rocket science has never been so much fun. This program allows young minds to be rocket engineers and expand their creativity in a fun and safe environment.

Camp will be held at the Rec. Center. Spots are limited!

**Ages: 7- 12 \$38**

Session 1: June 21-23

Session 2: June 27-29



**Register online at [www.wasatchparksandrec.com](http://www.wasatchparksandrec.com) or call the Rec Center at 435-657-3240. S**

## WHS FOOTBALL CAMP

This is a great opportunity for the beginner or experienced player. This camp is designed to fine tune fundamental skills. All sessions will offer specialized football instruction in both offensive and defensive techniques. Campers will be grouped according to age and ability. **Pick up registration forms at Wasatch High School or Wasatch County Rec. Center. Register online [www.myschoolfees.com](http://www.myschoolfees.com)**

Cost is \$55 until May 27<sup>th</sup> and \$60 day of. Includes T-Shirt

Grades: 6<sup>th</sup>, 7<sup>th</sup>, 8<sup>th</sup> (Next school year 2022/2023)

Grades: 2<sup>nd</sup>, 3<sup>rd</sup>, 4<sup>th</sup>, 5<sup>th</sup>, (Next school year 2022/2023)

June 2<sup>nd</sup> & 3<sup>rd</sup> 10:00am- 12:00pm

May 31<sup>st</sup> & June 1<sup>st</sup> 10:00am- 12:00pm

Camp Check-In will be at 9:45am  
Day of camp at Wright-Tree Stadium, West Entrance.

## FAIR DAYS PARADE

Enter your business, organization or family in the Wasatch County Fair Days parade! Entries are due Monday August 1, 2022. Registration is only available online so that each registrant can write their own entry description. The description is strictly limited to 50 words or less. The parade will be held at 4pm on Saturday Aug 6. Line-up information will be available on Thursday Aug 4 after 1pm at the Wasatch Rec. Center. See the link on our website for the parade route.

## BIRDHOUSE PAINTING

Come enjoy a fun hands on activity for the afternoon and create a one of a kind birdhouse painted by you! For kids 5 –14 years old, younger kids welcome if accompanied by an adult. Cost: \$10 which includes all supplies necessary. Thursday June 30th at 10:30– 11:15am at the Rec. Center

Register on-line or at the Rec. Center. Spots are limited so sign up today!

## MINI CHEER

Registration for Mini Cheer is open May 2– June 18!! Open to everyone in grades 2nd– 6th (**register for the grade you will be in next school year 2022/2023**). Do you want to cheer in this years Fair Days and Swiss Days Parade? Join our program today! Girls will practice twice a week throughout the summer learning cheers to perform in our local parades. Registration includes t-shirt, pom-poms, and hair bow. Participants are responsible for getting their own black shorts or spanx. Program Dates: June 28– September 3.

Cost: \$75.00

Spots are limited! Sign-up today at  
[www.wasatchparksandrec.com](http://www.wasatchparksandrec.com).

## TIE DYE

Come to Southfield Park and create your own tie-dye t-shirt! For kids 6-12 years old, younger kids welcome if accompanied by an adult. **Cost: \$15 includes all supplies.**

Thursday July 14 1:30 pm

Southfield Park Large Pavilion  
100 S. Southfield Rd. (1200 West) Heber  
Register on-line or at the Rec. Center.



## \*FAIR DAYS TALENT FIND\*

AGE DIVISIONS FROM 3-30 YRS. OLD

REGISTRATION OPENS:

MONDAY, JUNE 1ST

QUESTIONS CALL KYLEE

435-657-3240

## CERAMICS PAINTING CLASSES



The Rec Center is offering ceramic painting classes for ages 5 and older. Classes are one hour and are offered on **June 16, July 7** from 4:30-5:15 p.m. **Cost is \$11** for the class and includes all materials for your project. These classes will fill quickly so call 435-657-3240 to get registered or register online at [www.wasatchparksandrec.com](http://www.wasatchparksandrec.com) to reserve your spot.

## WOMEN'S SOFTBALL



Time to get your team registered for the upcoming Women's softball season. Games will be on Tuesday's beginning June 28th— August. Games will be 6:30-9:30pm on the hour depending on how many teams register to play, with a single elimination tournament to follow the season. Team fee: \$425 (non-refundable) due at registration. Space is limited, Sign ups end June 20th. \*Anyone who is interested in playing Women's but doesn't have a team call Kylee at 657-3240 to get your name on the "Free Agent" list which will be given to team managers.

## FALL CO-ED SOFTBALL

Parks & Recreation will be offering a Fall Coed softball league this year. Games will be played on Wednesdays August 24<sup>th</sup>-September from 6:30-9:30 depending on the number of teams that sign up. Season will be followed by a tournament. Space is limited to the first 8 teams to sign up, so sign up today! Sign ups end August 14th Team Fee: \$350 (non-refundable) due at registration. Anyone who is interested in playing but does not have a team call Erik at 657-3240 to get your name on the "Free Agent" list which will be given to team managers.

## LITTLE MISS WASATCH



Little Miss Wasatch Day Camp will be held Saturday June 18th for all Wasatch County girls between the ages of 5-9 years old. The Camp will be held at the Wasatch Recreation Center from 10-11:30am. The girls will learn a dance that they will all perform at the Miss Wasatch Competition on July 25th at Wasatch High School. During the Camp, they will also have an individual interview and perform a one minute talent demonstration.

The Little Miss Program is affiliated with the Miss Wasatch Scholarship Program and grants the opportunity for the chosen girl/girls to work alongside Miss Wasatch 2022. The duties will include participation in this year's Miss Wasatch Competition, Fair Days week and giving service throughout the year.

Little Miss Wasatch will be part of the week long Miss Utah Scholarship Competition held in June 2023 with Miss Wasatch 2022. Registration is available online at [www.wasatchparksandrec.com](http://www.wasatchparksandrec.com), the fee is \$10. In addition to the online registration, a 5x7 or 4x6 photograph must be turned in on the day of the Little Miss Camp. Online registration must be completed by Thursday June 16th 2022. For questions you may reach Aja Phillips at 435-654-8461 or [misswasatchcounty@gmail.com](mailto:misswasatchcounty@gmail.com)

## Come be part of this years Fair Days!

Registration for our Country Market is going on now. We have 10 x 10 spots available for \$50 and for an additional \$25 you can have power. The country market opens Wednesday night August 4th and will go until Saturday night August 6th. The country market welcomes anyone who is interested in having a food booth, craft booth, non-profit booth, and any merchandise booth. You can register online at [wasatchcountyfair.com](http://wasatchcountyfair.com) or by phone at 435-657-3240. If you have any questions contact Steve North at 435-657-3240.

## ROLLER FITNESS WITH ELISE JONES

Ready...Set...Roll for some fitness fun every Thursday at 9am at the Wasatch Rec Center. Elise has created this unique class to share her passions for yoga & rollerskating. The class combines strengthening movements, balance skills, yoga & breath work, all on skates! No need to pre-register, just pay as you go, \$8/class. Come have a sweaty blast with great music and good friends.

**NamaSkate!**

## FAIR DAYS EXHIBITS

SHOW OFF YOUR TALENTS AT THE 2022 FAIR DAYS EXHIBITS! ALL EXHIBITS WILL BE ENTERED ONLINE BY THE PARTICIPANT TO HELP SIMPLIFY THE PROCESS. ON-LINE ENTRY BEGINS JULY 11, 2022. SEE OUR WEBSITE TO REGISTER AND FOR THE 2022 EXHIBIT INFORMATION BOOK.

## HUNTER SAFETY

A Hunter Safety class will be offered on Mondays starting August 8, and will run through September 19, 2022 from 6:00 – 8:00 pm. Class will be held at the Wasatch Co. Rec Center. East Class Room. Shoot day will be Saturday September 17. Please keep these days open.

To register for the class you must:

**1st** - You must register at the Rec Center (\$25)

**2nd** - You will need to Register online at Utah division of wildlife Recourses, Hunter Safety course in person class, Wasatch Rec Center with Ed Masson, you will need class number and customer ID number from your Voucher to register for the class on line at the DWR web site.

**3rd** - Must purchase a Hunter Education Voucher from Sportsman's Warehouse or Timberline or a licensed agent (\$10).

We prefer you do not buy online.

## INTRO TO SPORTS CAMP

Let's be honest, your kids just want to have fun and make friends. Many don't know what sports they enjoy or even know what they are good at! This camp is to give an introduction to multiple sports such as soccer, kickball, handball and flag football. We strive to create an environment where your kids can learn to try and become comfortable at failing, learn skills to make new friends, and find out what really interests them! This is for girls and boys ages 5-10! Camp will be held at the Rec. Center

**Days:** Monday– Thursday

**Session 1:** June 20– 23

**Session 2:** July 18– 21

**Price:** \$45.00

**5–6 year olds** 9:00 am– 10:00 am

**7–8 year olds** 10:00 am– 11:00 am

**9-10 year olds** 11:00 am– 12:00 pm

## GAME ON! SPORTS 4 GIRLS CAMP

At Game On! Sports 4 Girls, girls of all skill levels will learn and play multiple sports daily in an empowering warm, and FUN environment. We will offer campers daily exposure to a wide range of sports including but not limited to lacrosse, field hockey, soccer, volleyball, basketball, softball, tennis. Whether you feel your daughter is athletically inclined or not, she will thrive. Through our Healthier4Me program, we integrate discussion and lessons that focus on self-esteem, respect, nutrition, teamwork, leadership, and so much more. Our passion and mission is to ensure every Game On! Sports girl develops a deep sense of what it means to feel empowered, confident, proud, and GIRLSTRONG!

**Ages:** Girls 4– 14

**Camp Dates:** Session 1 June 13– 17, Session 2 June 20– 24, Session 3 June 27– July 1

**Cost:** \$300

For additional information and to register go to [www.wasatchparksandrec.com](http://www.wasatchparksandrec.com) or by phone at 435-657-3240!

Spots are limited!

## SUMMER ART CAMP

Summer Art Camp classes taught by Bailey Tillotson with [theartroom.com](http://theartroom.com) are available to anyone ages 3-18. For class and age specific information go to [www.wasatchparksandrec.com](http://www.wasatchparksandrec.com) today. Spots are limited!

Camp dates: June 21-23, July 12-14

### Pre School- Elementary

In this Program you'll learn to create 3 different fun paintings. We will experiment with watercolor, crayons, bubbles and straws to unleash your kids' creative side. Each painting comes with a pre-printed outline and I'll be there every step of the way to guide your kids from start to finish. The Camp will be held at the Rec Center.

### Pre Teen- Teen

This program will be separated into 3 sessions. Day one: We will get familiar with our paints by doing a fun basic techniques exercise. Day 2: We will do a fun and simple Mountain cottage painting to practice the techniques we have learned. Day 3: You'll be able to choose what you paint (I'll have pre-printed outlines for those that want one) and I'll be there every step of the way to guide your kids from start to finish. The Camp will be held at the Rec Center.

## Mountain Valley Stampede Rodeo

Tickets go on sale June 1st at 9:00 am for the Mountain Valley Stampede Rodeo at the Wasatch County Fair.

We've had so much fun doing 2 rodeo's we decided to add a 3rd night! It will run Thursday Aug. 4th - Aug. 6th at 7:30 pm! You can purchase single day passes or a 3 day pass to these events. We hope to see you there!

## GUITAR CLASS

This is a beginning guitar class to learn basic chords and finger placement. Taught by Russ Lee of "Lee Music". Ages 8 & older. Bring your own guitar. Class held at Rec. Center.

Cost: \$55

Date: June 6th– 9th Monday– Thursday

Time: 1:00– 1:45pm



## SUMMER GYMNASTICS CAMPS

### June 29<sup>th</sup> & 30<sup>th</sup> - Open Gym!

1:00 – 3:00 pm, Age 6 and up, cost \$40

This is an opportunity for your gymnast to work on their gymnastics at their own pace as well as the chance to explore all the apparatuses! Coaches will be helping gymnasts with skills outside their ability by offering safe progression as well as spotting.

### July 6<sup>th</sup> & 7<sup>th</sup> – "3, 4 & 5 "year olds Gymnastics Camp!

1:00 – 3:00 pm – Ages 3, 4, 5 year olds. Cost \$63

This is an opportunity for your little one to get all their wiggles out through the fun and play of gymnastics! Activities designed to keep your child engaged and exited from start to finish.

### July 13<sup>th</sup> & 14<sup>th</sup> - Beginning Girls Gymnastics Camp!

1:00 – 3:00 pm – Ages 6 and up. Cost \$72

This is an opportunity for your gymnast to gain a deeper understanding of the fundamentals of gymnastics! Coaches will go more in depth into each apparatus than is possible for a standard class. Allowing your child to finish this camp with the knowledge & understanding they'll need to progress their skill to the next level!

### July 20<sup>th</sup> & 21<sup>st</sup> - Intermediate Girls Gymnastics Camp!

1:00 – 3:00 pm – Ages 6 and up. Cost \$72

This is an opportunity for your gymnast to work on the skills and drills needed to acquire more advanced skills! Progression needed for skills to do back handsprings on floor Exercise! Back hip circles on the Bars and Cart Wheels on the Beam!

### July 27<sup>th</sup> & 28 – Advanced Girls Gymnastics Camp!

1:00 – 3:00 pm – Ages 6 and up. Cost \$72

This is an opportunity for your gymnast to work on the advanced skills that we only briefly touch on in regular class! Skills such as Ariel's, Back tucks and Round offs, Back Hand Springs on the floor Exercise.

Front Hand Springs on the Vault! Back walkovers and Cartwheels on the Beam! Kip's, ¾ giants or Free hip Circles on Bars!

### August 3<sup>rd</sup> & 4<sup>th</sup> – Beginning Boys Gymnastics Camp!

1:00 – 3:00 pm – Ages 6 and up. Cost 72

Does your son love to run and jump and climb on anything and everything? Then this is the perfect camp for him! This camp is designed for your gymnast to be able to channel his energy in a fun, exciting and safe way! Skills taught can be used the rest of their lives!

### August 10<sup>th</sup> & 11<sup>th</sup> – Intermediate/Advanced boys Gymnastics Camp!

1:00 – 3:00 pm – Ages 6 and up. Cost \$72

This camp is designed for young men wanting to advance their skills in the sport of gymnastics! Strength, flexibility and discipline will be focused on to help aid in the progression to the next level.

## FAIR DAYS BIKE PARADE

Children of all ages (and their parents) are invited to decorate their bike and ride at the front of the County

Fair Days Parade on Aug 6th! No cost or pre-registration necessary, just show up at 3:30 to the parade information booth near the parade route starting line. The parade will begin at 4:00pm. Each child will receive a dollar coin for their participation. Don't miss out! For information on submitting an entry or float in the 2022 Fair Days Parade, please see our website.

## Charley Jenkins in Concert

Join us for the free  
Fair Days Concert on  
Thursday, Aug 4, 9:30pm  
Outdoor Event Center  
following the Fair Days  
MVS Rodeo

Rodeo ticket not required

## WASATCH COUNTY FAIR DAYS

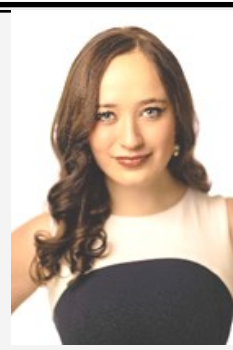
### *Miss Wasatch Scholarship Pageant*

*Saturday, June 25 7:00 pm*

*Wasatch High School*

*Who will be the next Miss Wasatch?*

*Tickets available on-line and at the door*



Miss Wasatch 2021  
Chanelle Smith

### **Want to be a part of the county fair? Volunteer!**

Consider volunteering  
for Fair Days!!  
There are many ways  
to help.

Call Amaria at  
435-657-3240 for  
information.

## SUMMER ART CLASSES

Summer art classes taught by Chelsea Remund.  
Come practice your art skills and make some  
beautiful crafts! For kids ages 5– 10. Class will be  
held at the Rec. Center.

**Dates:** July 18-21

**Time:** 10:30– 11:30am

**Cost:** \$50.00

Spots are limited, sign up today at  
[www.wasatchparksandrec.com](http://www.wasatchparksandrec.com).

## 2022 FALL SOCCER

**Fall Soccer registration** will be May 23-Aug 21. The cost is \$45 and is open to all children ages 3 -12 years old. Registration may not be available after August 21 if teams are full, so sign-up early! If late registration is available, there is an additional \$5 late fee. Please register your child according to their grade as of Fall 2022.

**Requests** (read carefully!) Requests will be taken for siblings in all age groups, and for children in Tiny Tots, U6, and U8 divisions according to these stipulations: For Tiny Tots, U6, and U8, you may make ONE request per child NOTE: the requested player must also request to be with your child. The request must be for a child and not a coach. Please realize we cannot guarantee that all requests can be accommodated and no requests will be taken after Aug 21.

**Registration includes:** 2 player clinics (Sept 14 & 21, 5pm at WHS Soccer Field), and 8 League games.

**Games:** Fall soccer games will be played on Tuesdays and Saturdays, Sept 10 – Oct 4. Game times are 5 or 6 pm on Tuesdays, and 9 or 10 am on Saturdays. (U6 game times are slightly different, with 45 min between games) Game locations will be determined after registration closes.

**Uniform:** Reversible soccer shirts are available to purchase at The Rec Center for \$15. The only uniform requirement is that players wear shin guards during the games and a black or yellow shirt depending on the schedule. Cleats are not required.

**Volunteer Coaches** are needed to make this program a success. The registration fee will be reimbursed at the end of the season for all coaches who return their equipment. During the registration process, please mark "yes" to the question "would you like to coach?" if you are interested in coaching your child's team.

**Soccer Referees:** Sign up at the Rec Center to be a soccer referee. Referee certification or previous competitive soccer play is highly recommended. To be a referee or for any additional information, call Kylee at 435-657-3240.

## WHS BOYS BASKETBALL CAMP

**WASATCH HIGH SCHOOL**  
**BOYS YOUTH BASKETBALL CAMP**

**JUNE 20-22, 2022 | GRADES 1-8**  
**WASATCH HIGH SCHOOL**  
GRADES 1-4: 9 AM-11:30 AM  
GRADES 5-8: 1 PM-3:30 PM  
COST: \$100  
Register at [ballcitybasketball.com](http://ballcitybasketball.com)

## 2022 FAIR CARNIVAL VOUCHERS

On sale Monday, July 11, 2022 at the  
Wasatch Recreation Center

\$25 per voucher. Vouchers can be used for ONE of the  
following options:  
--40 tickets that are good Aug 3-6  
--1 unlimited ride wristband on Aug 3  
--1 unlimited ride wristband on Aug 4

Carnival hours will be Aug 3, 4pm-10pm, Aug 4&5, 12-10pm, and Aug 6, 10am-10pm

## FLAG FOOTBALL



For youth in grades 2-6 for the 2022/2023 school year. This league will give participants an exciting opportunity to play 7 on 7, non-contact flag football. Register June 1st – August 29th at the Rec Center or Online. League starts on September 10<sup>th</sup> and will run through October 4th. Games will be played on Tuesday evenings at 5 or 6 pm and Saturday mornings at 9 or 10 am. Registration cost is \$45. Players will wear the reversible black or gold jersey that is also used for soccer. Volunteer coaches are always needed and appreciated. Jerseys are sold at the Rec. Center for \$15.00.