



Event Center Project Newsletter

April 2019

Vol. 8

Spring has sprung....

by Washington County Project Manager, Geoffrey Kavulya

In the spring, a lot of dirt will have been moved to create a facility, which is the Washington County Event Center. Thus far, we have issued a Notice to Proceed (NTP) and on boarded at least 97% of the key sub-contractors, in accordance with the schedule of procurement for execution of contracts. We have excavated, laid form work, installed tons of rebar and poured yards of concrete into solid foundations for a strong superstructure (see image).

On the Building Information Modeling (BIM) front, the team is busy with 3D modeling, detailing, review and integration for Cross Laminated Timber/Mass Timber, structural steel, mechanical electrical plumbing & fire protection (MEPF), and other building systems. BIM coordination is an ongoing audit check to identify, inspect and report on potential project conflicts in a 3D model as needed. We can report that a many efficiencies continue to emerge from team coordination of the various building systems. Moreover, we have received a Portland General Electric (PGE)-issued right of way to facilitate electrical tie-in to the PGE vault and trenching for light poles. PGE inspections will follow soon after this scope of work is completed.

continued on page 3



-A close-up of rebar in place, before concrete pour.

In this issue...

Spotlight on...

Project Schedule

Project Updates

Contact Information



Welcome
Spring
WE ARE CRUISING RIGHT ALONG....

Spotlight on...

Project News:

By John Ciepiela
Project Manager, Swinerton Builders



The Swinerton team leads Event Center project leadership on the first site walk.

Along with spring flowers, we have sprouting steel and utilities all over the site. The structural team has done a great job this past month with support from Coffman Excavation. Whitaker Ellis has poured the concrete foundations at the north side of the building and will finish all foundations by the end of the month. As the structural team progresses, our electrical, mechanical, plumbing and fire protection subcontractors will begin all their underground work before we start with the concrete floors. Lastly, as our design finalizes, the project's coordinated 3D model is nearly complete which will allow our fabrication for steel and mass timber to begin! As the summer approaches, so does the growing excitement for the project to go vertical, and as always, the construction team is proud to work with LRS Architects and Washington County to deliver this beautiful public building.



-Foundation work at the site during the spring dry weather

LRS Architects - Alex Karel

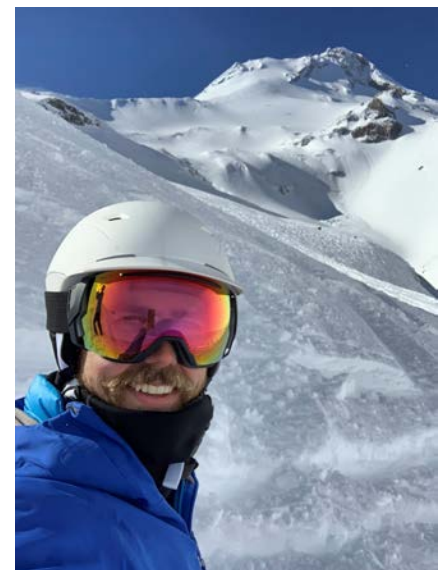
By Alex Karel
Associate, Architect NCARB LRS Architects



Alex Karel is a Project Architect with LRS Architects and has been working on the Event Center since Design Development began in October 2017. He is now working closely with Swinerton and the County Project Team on construction administration as building activity progresses.

As an architect, Alex is keenly interested in the use of advanced technologies such as Building Information Modeling (BIM) and virtual reality with real time rendering as a way to communicate and coordinate building design across disciplines. He has enjoyed seeing how both Washington County and Swinerton are embracing BIM to enhance construction coordination and documentation, avoiding field coordination issues now, and giving the facility management team better data for the future.

In his downtime, he enjoys spending time with his family, cooking and getting outdoors. One of his favorite winter activities is skiing and you can find him on the slopes of Mt. Hood when time and weather conditions align.



Enjoying Mt. Hood in his free time...
Alex Karel
Associate, Architect NCARB
LRS Architects

Spotlight on...



continued from page 1:

Spring has sprung.....

Laying out framework-

All the major permits have been issued. We are working with the City of Hillsboro on a timeline for deferred submittals. The signage permit is one of those on the deferred path, until we are ready for signage scope. After working with the City to establish parameters such as sign placement, type and size and final text requirements, we have submitted the Event Center Comprehensive Sign Permit application for review and approval. The signage effort dovetails with the ongoing Event Center branding, an effort with key project stakeholders to identify opportunities to promote the facility.

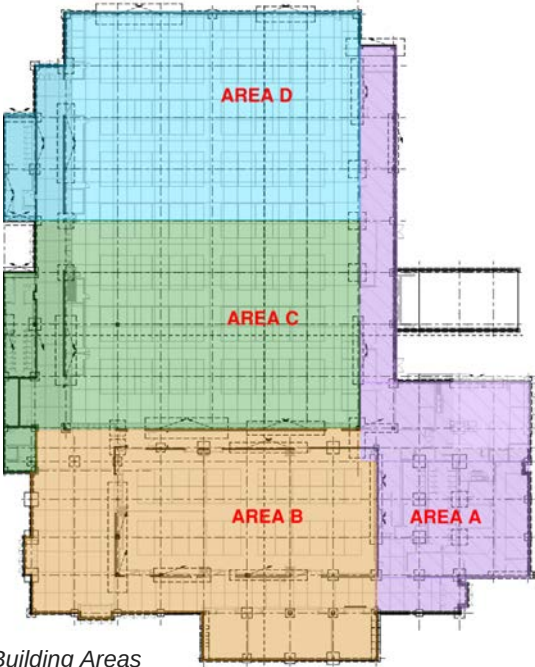
On the sustainability front, we are enrolled with New Buildings, a program run by Energy Trust of Oregon, to assist with energy modeling to achieve energy efficiencies and savings. We are tracking to receive an incentive funding for demonstrating energy saving strategies on the project. Moreover, we are cued to submit a grant application for solar energy funding through Portland General Electric Renewable Development Fund.



-Concrete pour in progress



-Completed footing



Building Areas



-Footings poured and building footprint takes shape. Area A shown to right, Area B adjacent to NE 34th Ave.



Contact us:

Washington County
Facilities & Parks Services
169 N 1st Ave
Hillsboro, OR 97124
503-846-8715

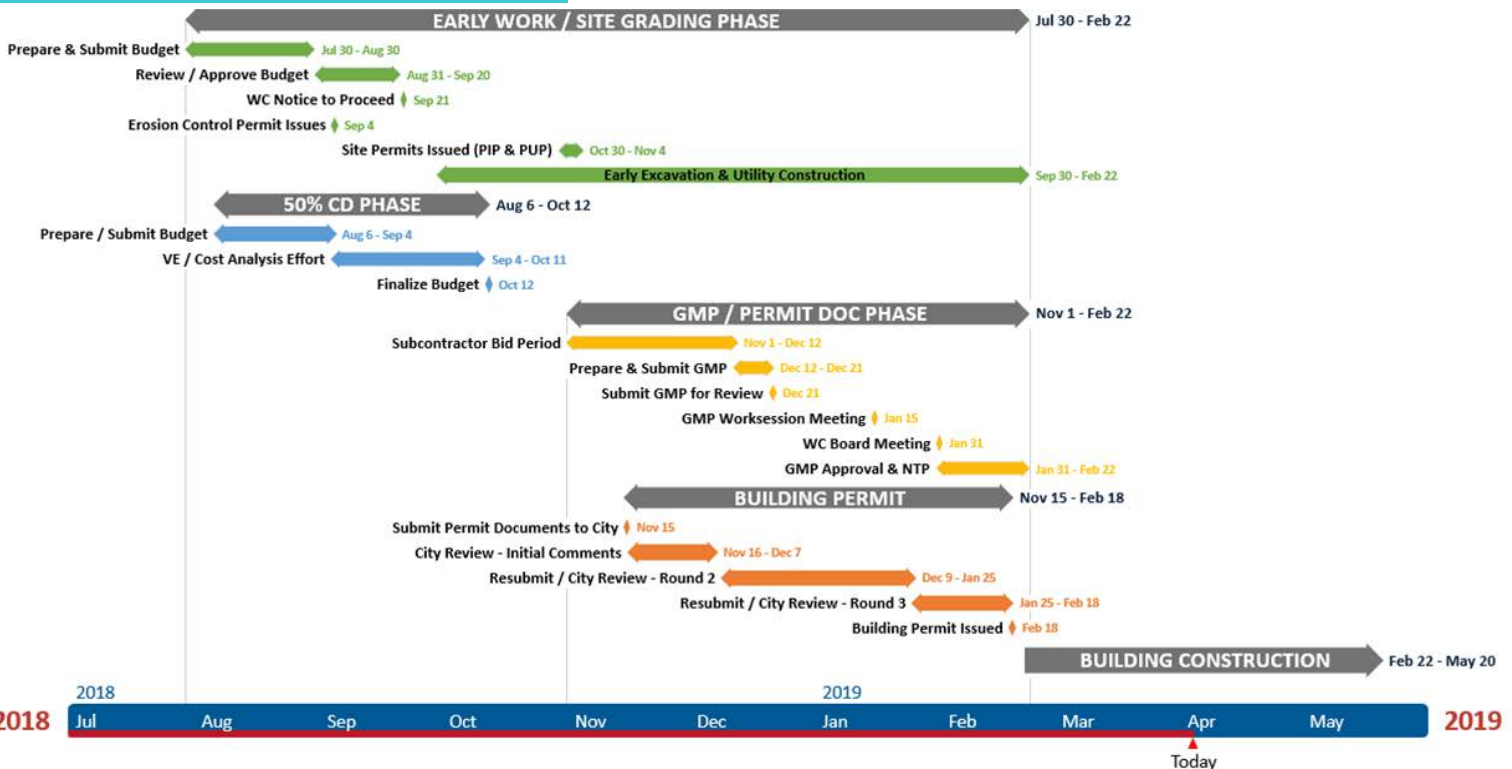
Project Manager:
Geoffrey_Kavulya@co.washington.or.us



Archive Issues:

www.co.washington.or.us/Fair/washington-county-event-center.cfm

Project Schedule



Watch the project:

<https://app.oxblue.com/open/washingtonco/eventcenter>