



**Making
Attractions Out
Of Mole Hills**

Plumas-Sierra County Fair

Employee Of The Month
Maintenance

Oran Morrison
January

Oran Morrison
July

Oran Morrison
February

Oran Morrison
August

Oran Morrison
March

Oran Morrison
September

Oran Morrison
April

Oran Morrison
October

Oran Morrison
May

Oran Morrison
November

Oran Morrison
June

Oran Morrison
December

A graphic of six colorful flags (yellow, green, purple, blue, orange, and red) on poles, arranged in a cluster and partially overlapping the text.

SIX **Flags**®

MAGIC MOUNTAIN







PLUMAS-SIERRA

The Last Best Little

COUNTY FAIR

QUINCY, CALIFORNIA



WILLIAMS / CIMINI
Artist Personal Management
816 NORTH LA CIENEGA BOULEVARD
LOS ANGELES CA 90045 (213) 657-4521

REBA McENTIRE



Exclusive Management
WILLIAM MORRIS AGENCY
NEW YORK BEVERLY HILLS CHICAGO LONDON

PLUMAS COUNTY

ME





AUTHENTIC MOLE HILL

This mole hill was constructed by resident fair moles. Known for creating dozens throughout the fairgrounds, this hill was constructed on our new gravel project despite specific directions to not do so. We don't mean to make a mountain out of this mole hill, we just wanted everyone to know we didn't leave this random pile of dirt here for no reason.







THE STRENGTH OF ANY NATION
DEPENDS UPON ITS CONSERVATION
AND WISE USE OF
NATURAL RESOURCES

THIS AREA PROVIDED FOR YOUR
USE BY THE
PLUMAS NATIONAL FOREST

VISITOR
INFORMATION CENTER
PLUMAS
National
Forest
U.S. DEPARTMENT OF AGRICULTURE



PLUMAS-SIERRA

The Last Best Little

COUNTY FAIR

QUINCY, CALIFORNIA





**Wednesday
August 10, 2016
Plumas Sierra County Fair**

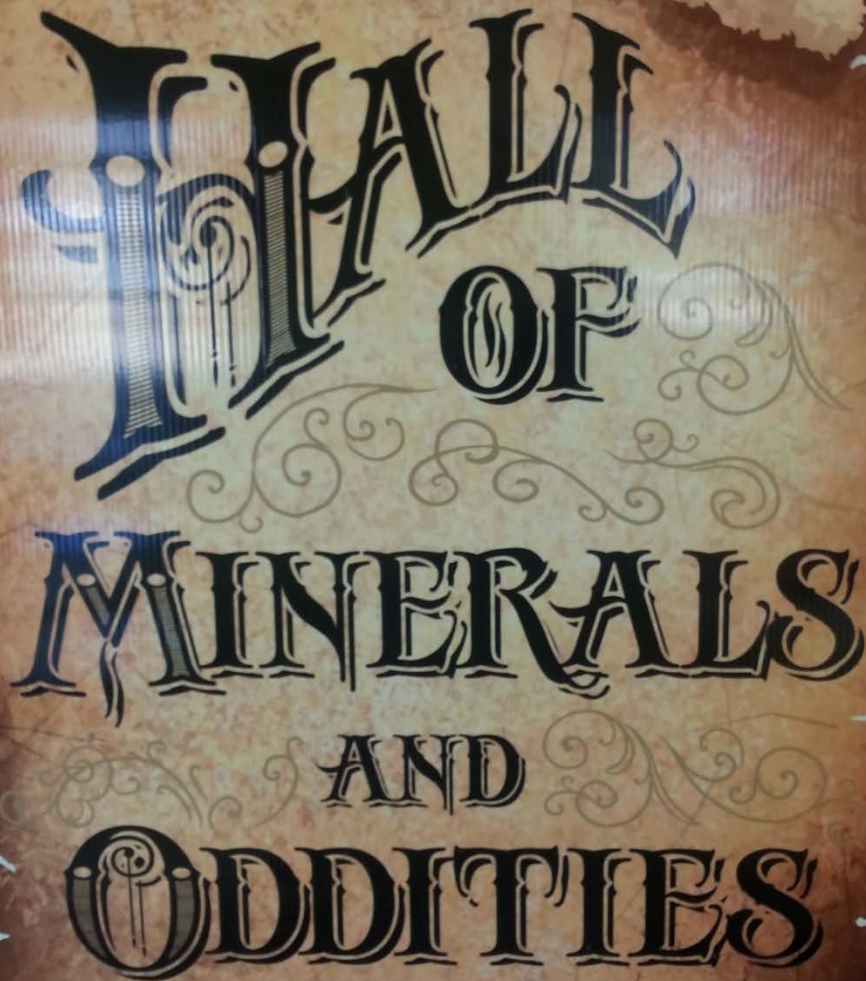
Some organizations have food drives, others have blood drives. We completely support those efforts, and hope you will also support our effort to raise an enormous "Pile of Smiles" for those who could really use a smile.

It's truly simple, just bring an extra smile to the first day of the 2016 Plumas Sierra County Fair, let us take a picture of it, and we will add it to our "Pile of Smiles" by the front gate. They will be shared with those most in need of a smile.

You will also receive a receipt of your donation that you can use for "tax purposes." Start saving those extra smiles now for the 2016 Plumas Sierra County Fair in Quincy.

Check out our video at www.plumas-sierracountyfair.net.

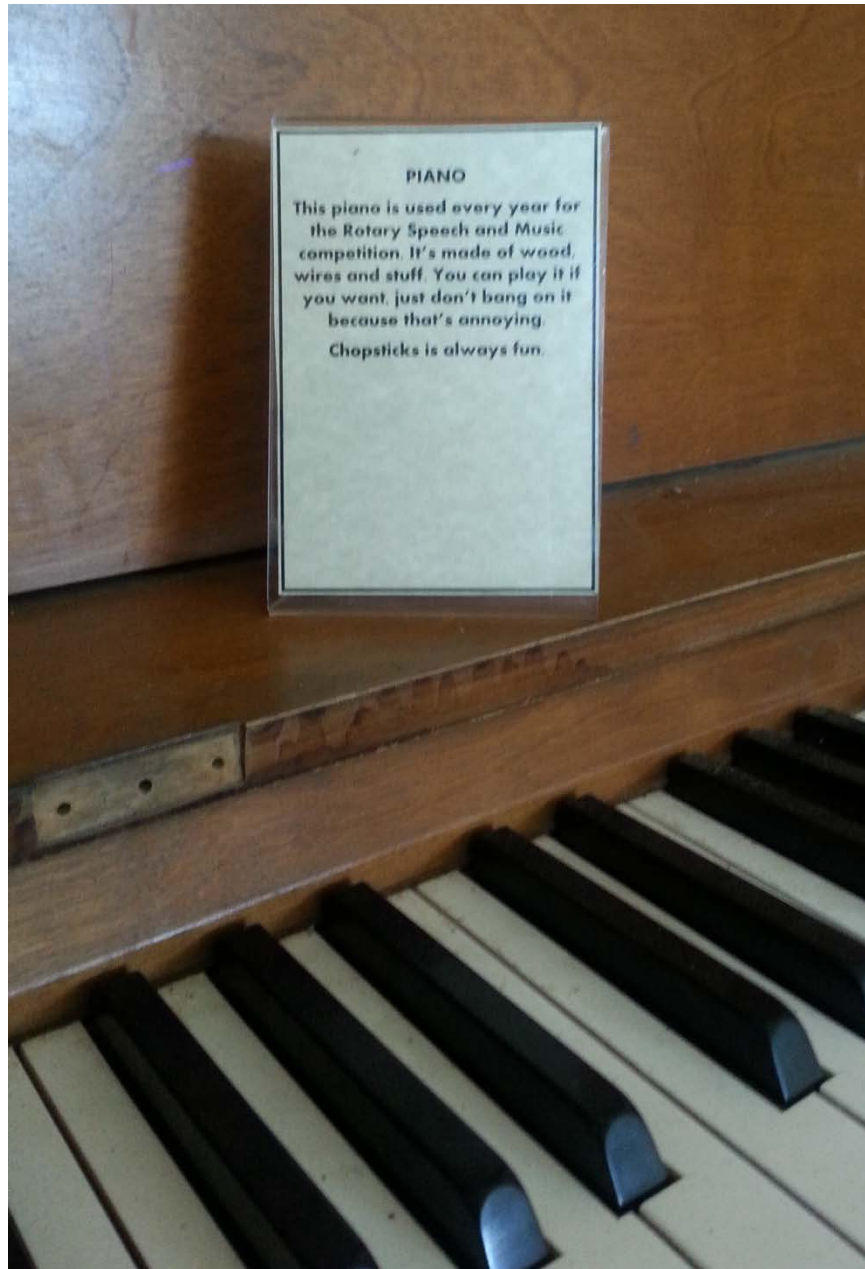




HALL
OF
MINERALS
AND
ODDITIES

PIANO

This piano is used every year for the Rotary Speech and Music competition. It's made of wood, wires and stuff. You can play it if you want, just don't bang on it because that's annoying. Chopsticks is always fun.





You are standing
at the exact center
of the Earth!



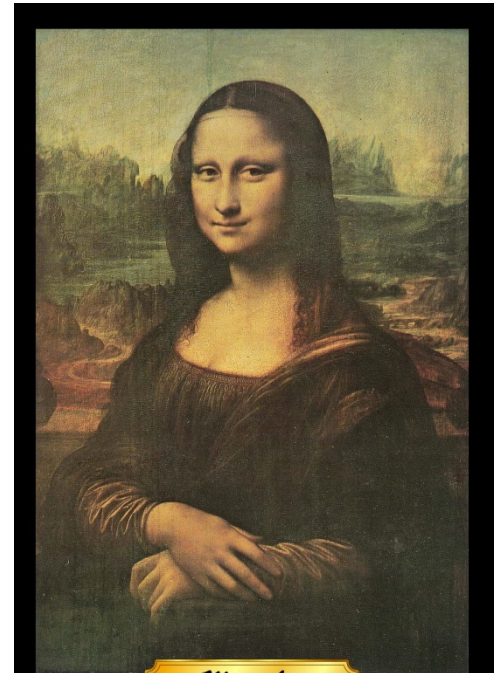
It was noted on February 3, 2011,
that this location on the Plumas Sierra
County Fairgrounds is the exact center
of the Earth. If you were to begin
walking due north and continued
around the world, you would arrive
at this very location after 24,859.82
miles. If you were to begin walking due
south and continued around the world, you
would arrive at this very location after
24,859.82 miles. That proves absolutely
that where you are standing is
the exact center of the Earth!

Peppard LOG CABIN MUSEUM





*Girl With A Pearl Earring
Johannes Vermeer*



*Mona Lisa
Leonardo da Vinci*



Tallest Person – 6' 4"

Oldest Person – 89

Most miles traveled to get to the Fair – 2939

How many times you attended The Plumas Sierra County Fair – 32

Smartest Person at the Fair

- 1) Me
- 2) John Steffanic
- 3) Oran Morrison
- Last) Your mom's butt



ARTOPOLIS



**THRILL-CRAZED SPACE
KIDS BLASTING THE
FLESH OFF HUMANS!**



**"TEENAGERS
FROM
OUTER
SPACE"**



STARRING DAVID LOVE · DAWN ANDERSON · HARVEY B. DUNN · BRYAN GRANT · TOM LOCKYEAR
WRITTEN, PRODUCED AND DIRECTED BY TOM GRAEFF DISTRIBUTED BY WARNER BROS.



**DRIVE IN MOVIE SHOW AT THE FAIRGROUNDS
SATURDAY, JUNE 11, 2016**

Starts 30 minutes after sundown

**Bring your car or a blanket. It's Magic under the Stars!
It's all FREE - Concession stand will be open.**





PLUMAS-SIERRA

The Last Best Little

COUNTY FAIR

QUINCY, CALIFORNIA