

Yolo County Fair 2025

COMPETITION GUIDEBOOK

YOLO COUNTY FAIR

AUG. 13-17, 2025



Welcome to the 2025 Yolo County Fair!

Dear Friends, Exhibitors, and Fairgoers,

It is my great pleasure to welcome you to the Yolo County Fair, a beloved tradition that has been bringing our community together since 1893. As California's longest-running free-gate fair, we take pride in keeping this event truly accessible to all Yolo County residents - a place where everyone can gather, celebrate, and enjoy the best our region has to offer.

From August 13-17, 2025, we invite you to experience everything that makes the Yolo County Fair special. Whether you're here to enjoy thrilling rides, delicious fair food, lively entertainment, or the incredible agricultural and livestock exhibits, there's something for everyone. Most importantly, the fair is a place to showcase the incredible talents of Yolo County! We encourage all residents to take part - whether through arts, crafts, baking, horticulture, gardening, photography, livestock, or performing arts - there's a place for your talent here. Be sure to enter and share your skills with our community!

This year's fair will feature exciting entertainment, interactive exhibits, and the return of our fan-favorite showcases, including the Opening Night Gala, 2 Nights of Derby, Yolo Vocal Showcase, artisan displays, and more. A heartfelt thank you goes out to our hardworking staff, volunteers, sponsors, and exhibitors who make this fair possible year after year.

We look forward to welcoming you to another incredible year at the 2025 Yolo County Fair! We are **Totally Ag-Cited** to see you soon!

See you at the fair!

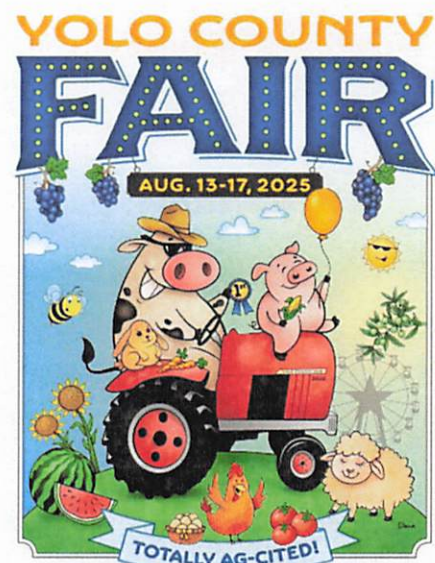
Sarah Pelle,

Chief Executive Officer
Yolo County Fairgrounds

40th District Agriculture Association

Yolo County Fairgrounds

Woodland, CA 95776





CALIFORNIA DEPARTMENT OF
FOOD & AGRICULTURE

Karen Ross, Secretary

January 8, 2025

On behalf of the California Department of Food and Agriculture, a warm welcome to you as we all prepare for the exciting 2025 fair season! We are thrilled you are joining us this year and sincerely thank you for your continued involvement in showcasing your products, livestock, and expertise. Your contributions help make our fairs successful and provide an invaluable experience for our communities.

Fairs play an essential role in connecting food and agriculture with the public. They are not only a time for us to celebrate the fruits of our labor, but also serve as a critical platform for educating future generations about the importance of farming and food production, livestock management, and sustainable practices. Through your participation, you directly contribute to the appreciation of the vital role agriculture plays in our lives and foster an understanding of the tremendous diversity, innovation and new technology that create new opportunities in agriculture and our rural communities.

The fairgrounds are not just a venue for the annual events. Throughout the year, they serve as a hub for various interim activities that support local economies, offer educational programming, and foster community engagement. From hosting agricultural workshops and livestock sales to providing facilities for regional competitions and cultural festivals, the fairgrounds contribute to the vibrancy and resilience of our agricultural community. Additionally, they play an important role in emergency preparedness, providing a space for disaster response and recovery efforts during critical situations, such as flooding or extreme weather events.

We understand the dedication and hard work that goes into preparing for the fair, and we want to express our deep gratitude for your commitment to making each fair season a success. Your participation ensures the continued relevance of our fairs and strengthens the agricultural ties that bind us all together as a community.

We look forward to this fair season and its great success!

Yours truly,

Karen Ross
Secretary



OFFICE OF THE GOVERNOR

California Agriculture Fair Season



It is my pleasure to welcome you to the 2025 California fair season!

From the first fair of the season in February to the last in late October, fairgrounds across the state are busy planning for one of the largest events of the year. These annual fair events have so much to offer.

At the fair, you can expect to find the traditional corn dogs, cotton candy, and carnival rides. In addition to these delicious treats and fun entertainment, you can also enjoy competitions, exhibitions, and educational activities. Your participation as exhibitors helps promote the importance of agriculture and food production throughout our state.

Aside from the annual fair, California fairgrounds remain busy hosting a variety of other events throughout the year. Most of these events are fun and festive celebrations that represent the culture and diversity of the communities that surround the fairgrounds. However, our fairgrounds are also amongst the first to serve in times of despair during emergencies and evacuations.

As resiliency centers, our fairgrounds provide safe shelter and build community preparedness as hazards like wildfires, floods and extreme heat become longer lasting and more frequent in California. During disasters, the fairgrounds offer a place to stay with kitchen and sanitation facilities, showers, and other resources.

Our fairgrounds are so important for our communities and so are exhibitors and advocates like you! Thank you for your many contributions to the continued success of the fairgrounds.

Sincerely,

A handwritten signature in black ink, appearing to read "Gavin Newsom", is written over a horizontal line.

GAVIN NEWSOM

Local Rules

General Rules

1. All State and Local Rules apply.
2. Entries are open to Yolo County residents and neighboring counties: Sutter, Sacramento, Colusa, & Solano
3. All entries must be made online @ <https://yolocountyfair.fairentry.com/>
4. **No** late entries will be accepted.
5. For assistance, we are here to help Monday-Friday 9 am – 4 pm. 530-402-2222 or email us at entries@yolocountyfair.net
6. No refunds of entry fees.
7. The California Fairs State Scorecards apply to all exhibits and entries, unless otherwise specified.
8. All information contained in the Yolo County Fair Competition Exhibit Book is subject to be amended and/or changed.
9. The owner or authorized agent(s) must present exhibits in person. Exhibits will not be accepted by mail. Please note the days and hours that exhibits will be received and judged in your division, as major changes may have been made in that area.
10. Fair Management is not responsible for finding errors on your entry form. Management may refuse entries but will do so without prejudice or discrimination.
11. Failure of any exhibitor to maintain his/her exhibit to the satisfaction of the Fair Management may result in removal of the exhibit, the cancellation of awards, premiums and Auction proceeds.
12. All judges are provided by the Yolo County Fair Management and, in every instance, the decision made by the Judge is final.
13. Cash awards will be paid only as recorded on signed Judging Sheet and only to the exhibitor.
14. Placing ribbons does not guarantee a correct judging placement. Only the official placing stated on the judging sheet(s) constitutes the final placement.
15. No Exhibitor or spectator is allowed in the building while judging takes place.
16. Exhibits will remain in place for the duration of the Fair.
17. NO motorized scooters, razor scooters, bicycles, skateboards or hover boards are allowed on the fairgrounds or in the livestock area.

Exhibitor Responsibility

18. By submitting an application for entry, participants agree to comply with all rules and regulations governing the Yolo County Fair as published in the Competition Exhibit Book.
19. The fair will not be responsible for exhibits after the close of pickup times following the fair. All exhibits and equipment MUST be claimed and removed within 5 days. After 5 days the items become property of the fair.

20. Premium checks must be cashed by **December 31, 2025**. No check will be reissued or the time extended. Questions on discrepancies in check amounts must be made prior to **October 1, 2025**. No premium adjustment will be made after that date.
21. Each exhibitor is responsible for any loss, consequential or otherwise, injury or damage done to or occasioned by, or arising from, any animal or article exhibited by him/her. Exhibitors shall indemnify the 40th District Agricultural Association and the County of Yolo against all legal proceedings in regard thereto.
22. A Junior Exhibitor, who in the opinion of Fair Management, 4-H Leaders or FFA Advisor, fails to conform to or accept the set standards of conduct as designated by his/her organization or by the 40th DAA Rules, may be disqualified from competition and removed from the fairgrounds along with his/her entries. This decision may be made at the discretion of his/her leader, advisor or Fair Management.
23. The Yolo County Fair has the right to refuse entry forms signed by unauthorized leaders and/or advisors. Before the entry deadline, Fair management also may ask that the community leader and/or County 4-H advisor to sign/authorize entries if proof and/or suspicion of wrong-doing has occurred.
24. Vehicles belonging to participants/volunteers are requested to park in the parking lot and walk onto the grounds to their assigned building.
25. Glass containers are not allowed on the grounds.
26. Animals are not permitted on the grounds unless they are part of an authorized show or exhibit. Service Animals are the only exception. Guide Dog puppies may be on the grounds and must comply with Fair Board Policy.

Exhibitor Divisions

27. Adult Divisions: For exhibitors eighteen (18) years and older.
28. Junior Divisions: For youth up to eighteen (18) years old prior to the first day of fair (except livestock – see livestock competition book for age rules)



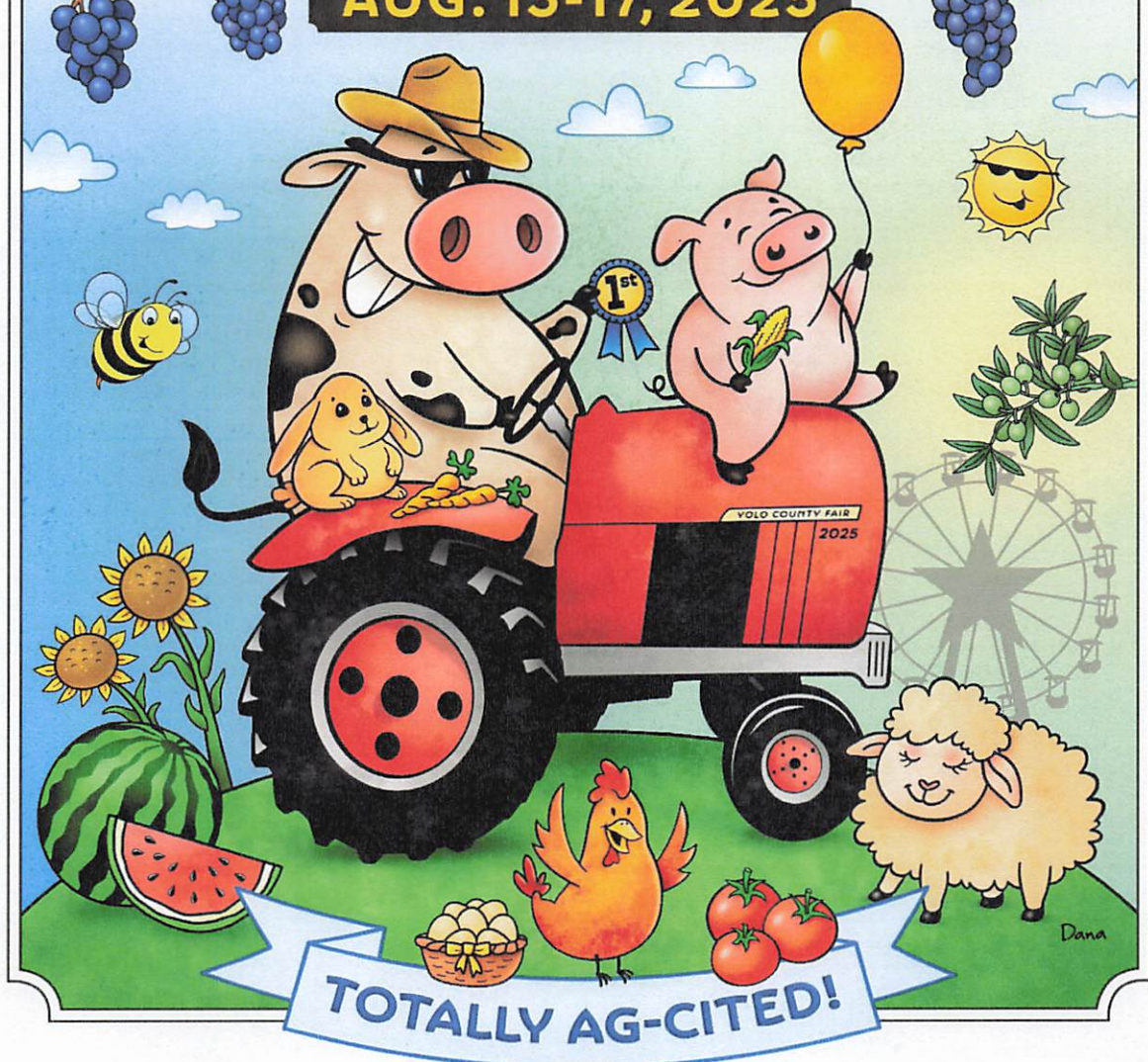
Exhibit Key Dates & Deadlines

May 5, 2025 9 am PST	Online Entry Registration Available ADULT and JUNIOR STILL EXHIBITS
July 21, 2025 10 pm PST	ALL ENTRIES DEADLINE For all Adult and Junior Still Exhibits, Trades & Technologies
August 4, 2025 1 pm - 8 pm PST Waite Hall	DELIVERY OF EXHIBITS (ADULT ONLY) Adult Fine Arts, Adult Crafts, & Hobbies. Adult Photography, & Adult Special Friends – Special Projects
August 6, 2025 1 pm - 8 pm PST John Roger Hall	DELIVERY OF EXHIBITS (JUNIOR) Art, Preserved Foods, Clothing & Textiles, Crafts & Hobbies. Photography, STEM Projects, and Special Friends – Special Projects
August 6, 2025 1 pm - 8 pm PST Home Arts Hall Main Office	DELIVERY OF EXHIBITS (ADULT) Home Arts -Clothing & Textiles, Preserved Foods, & Quilts Office - Garbage Can Art, Barn Door Mural, and Photo Cut Outs
Aug 11 & 12, 2025 9 am – 8 pm PST	EXHIBIT SETUP (ADULT) – The Plaza Flowering Wagon, Flowering Wheelbarrows, Flowering Wine Barrels
Aug 11, 2025 1pm - 8 pm PST John Rogers Hall & Dairy Barn	DELIVERY OF EXHIBITS (JUNIOR) Baked Goods, Agriculture (fruits & vegetables), Flowers & Plants, Ag Mechanics/Industrial & Vocational Skill Projects
Aug 11, 2025 1 pm - 8 pm PST Home Arts Hall & The Plaza	DELIVERY OF EXHIBITS (ADULTS) Home Arts – Baked Goods Plaza – Agriculture (fruits & vegetables) and Faux Floral Arrangements
August 11, 2025 1 pm to 8 pm PST John Rogers Hall	DELIVERY OF EXHIBITS (JUNIOR) Junior Fair Fun Specialty Contests – Flower Wagon/Wheelbarrow, Seeds of Fashion, Garbage Can Art, & Painted Hay Bale
August 13, 2025 11 am - 1 pm PST The Plaza	DELIVERY OF EXHIBITS (ADULT) Cut Flowers & Wednesday Arrangements
August 14, 2025 9 am - 11 am PST The Plaza	DELIVERY OF EXHIBITS (ADULT) Thursday Arrangement
August 15, 2025 9 am – 11 am PST The Plaza	DELIVERY OF EXHIBITS (ADULT) Friday Arrangements
August 16, 2025 9 am - 11 am PST The Plaza	DELIVERY OF EXHIBITS (ADULT) Saturday Arrangements

ADULT STILL EXHIBITS
2025 COMPETITION GUIDE

YOLO COUNTY
FAIR

AUG. 13-17, 2025



How To Enter an Adult Exhibit for the Yolo County Fair 2025

A STEP-BY-STEP GUIDE

STEP 1: Download/View or Pick-up a Competition Guidebook:

- The Competition Guidebook is located on the fair's website @ www.yolocountyfair.net or you can pick up a copy at your local library or the Yolo County Fair office.

STEP 2: Review the Competition Guidebook: Review the Guidebook to see all the different types of exhibits and classes that are available for Adult Exhibits.

STEP 3: Determine the correct Classification. Some categories have Novice/Amateur, Intermediate, and Advanced classifications, which are separate divisions or classes in the competition guidebook. Be sure to select the correct one.

STEP 4: Entry Options: You have two available options to enter your Still Exhibits.

1. Online @ www.yolocountyfair.net or
2. Turn in your completed entry form to the fair office by the entry deadline date.

STEP 5: Entry Information: Whichever way you decide to enter, you will need to provide your full contact information and enter the division, class, and subclass numbers for each of the exhibits that you wish to enter. (This information is detailed in the Competition Guidebook for each entry)

STEP 6: Turn in the Entry Form by the Entry Deadline: All Still Exhibit Entries must be entered by **July 21, 2025**, by 10:00 pm PST for online entries or delivered to the fair office by **5:00 pm PST on July 21, 2025**.

STEP 7: Deliver the Exhibits: You will need to bring your exhibits to the fairgrounds on the "Entry Delivery" dates which are specified in the Competition Guidebook. There will be signs at the fairgrounds directing you to the correct location to deliver your exhibits to.

STEP 8: Visit the Fair: Come to the fair and see your exhibits being displayed & all the awards you may have earned. You are welcome to take pictures of your exhibits on display and share them online using your favorite tag lines or this year's fair hashtags; #agcitedtohere, #myfairmemories, #yolocountyfair.

***** Need Help? *** We are here to assist. ☐**

If you have any questions or are confused on how to complete the online entry or entry form, we are more than happy to help you with the entry process. Just call or bring your entry form into the office. The sooner you get our help, the sooner we can make sure you're entered correctly. Many first-time exhibitors find entering the fair to be confusing, so don't be afraid to ask for help! ☐



**Entry Forms Due:
July 21, 2025**

[illegible]

The undersigned has read, understands, and agrees to abide by the rules as so stated in the Exhibit Guidebook and the California State rules governing competition at California fairs. The Exhibitor and his/her agents agree to defend, indemnify, and hold harmless the 40th DAA (Yolo County Fair) and the State of CA from and against any liability, claim, loss or expense (including reasonable attorney fees) arising out of any injury or damage which is caused by, arises from, or is in any way connected with participation in the program or event. The Association shall not be responsible for any accidents or losses that may occur to any of the exhibitors or exhibits at the fair. The exhibitor (or parent or guardian of a minor) is responsible for any injury or damage resulting from the exhibitor's participation in the program or event. This includes any injury to others or to the exhibitor or the exhibitor's property. By signing this form, you agree that any photographic or video images or likeness of you can be used by the Association for promotional purposes.

Total Due:

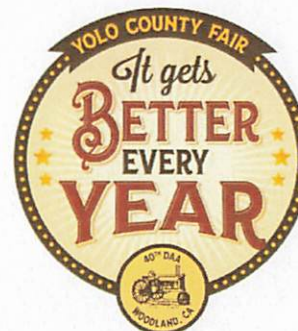
Printed name of Exhibitor

Signature of Parent /Guardian

Mailing Address: _____

City: _____ State: _____ Zip: _____

Phone: _____ Email: _____



Mail or Hand Deliver
form(s) to:

Yolo County Fair
1125 East Street
Woodland, Ca 95776

After Hours Drop Box Available

Entries due 07/21/2025
by 5:00 pm PST

ADULT STILL EXHIBITS DEPARTMENT

Rules:

- Eligibility: Open to Yolo County & Neighboring County's residents, ages 18 or older.
- Judging: Unless otherwise noted, all divisions in the Adult Still Exhibits Department will be judged using the American Judging System. Each entry in a class is judged in comparison to other entries in the class. Awards are given according to relative merit with the potential for no more than one first, one second and one third place.
- Enter exhibits online at yolocountyfair.net
- **Entry Deadline: July 21, 2025**
- **No late** entries will be accepted.
- All Local & State Rules apply.
- Entries must have been prepared by the exhibitor.
- The Judge has the authority to transfer any entry from one Division/Class to another. The Judge's decision is final.
- Any Other Classes are for those items that do not fit into the classes described in the Division and Class listing. Items entered in the Any Other Class must not fit into any other class available in the Division and Class listings.

ADULT AGRICULTURE / HORTICULTURE DEPARTMENT

Yolo County – A Community Rich in Agriculture!

Yolo County is known for its natural beauty, agricultural heritage, and wine country. Yolo County has led the state in agricultural preservation for decades. Our county has many organic farms and a multitude of places to get farm-fresh food that embraces the Farm to Table standards.

Awards Offered:

- **BEST OF SHOW:** \$25 & Rosette
- **RESERVE BEST OF SHOW:** \$20 & Rosette
- **BEST OF DIVISION:** Rosette



Entry Information:

- **Maximum** of **5** entries per **DIVISION**
- Only **1** entry per **class** will be permitted
- Entries are to be delivered to the **PLAZA** building on August 11, 2025. Display plates will be provided at check in.
- Deliver on: **August 11, 2025, from 1 pm to 8 pm PST.**

Rules:

- Eligibility: Open to Yolo County residents and neighboring counties, ages 18 or older.
- The quality desired in agricultural and horticultural exhibits is the same quality that brings the best financial return in the commercial market. Such exhibits must be at least equal in maturity to that state of ripeness required by Section 42513 of the California Agricultural Code.
- Items may not be entered in "Any Other" classes if there is a class offered for that item.
- **Mature** means having reached the stage of ripeness which ensures the completion of the ripening process after the removal of the product from the tree, plant or vine.
- **Overripe** means having an advanced state of maturity, which causes the product to be undesirable for human consumption in a fresh state

Requirements:

- The exhibitor must have grown products entered in these divisions.
- The Fair will not be responsible for the return of exhibits in this department.

- It is the exhibitor's responsibility to provide replacement perishable produce in the quantity entered.
- Spoiled fruits and vegetables will be removed from the exhibit.
- The number of required products to be submitted as an entry follows the class name.

Fruits and Vegetables



DIVISION 1 – FRUIT & POD VEGETABLES

Class

- 1 Beans, Any (specify) (12 Pods)
- 2 Peas, Any (specify) (12 Pods)
- 3 Peppers, Bell – Any Color (3)
- 4 Peppers, Any Other (specify) (3)
- 5 Tomatoes, Cherry (3)

Class

- 6 Tomatoes, Heirloom (3)
- 7 Tomatoes, Beefsteak/Big Boy (3)
- 8 Tomatoes, Any Other (specify) (3)
- 9 Tomatillos (3)
- 10 Any Other (specify) (3)

DIVISION 2 – ROOT, BULB & TUBER VEGETABLES

Class

- 1 Beets, Any (specify) (3)
- 2 Carrots, Any (specify) (3)
- 3 Garlic, Any (specify) (3)
- 4 Jicama, (3)
- 5 Onions, White (3)
- 6 Onions, Red/Yellow (3)

Class

- 7 Potatoes, White (3)
- 8 Potatoes, Red (3)
- 9 Radishes, Any (specify) (5)
- 10 Any Other (specify) (3)

DIVISION 3 – LEAFY & STEM VEGETABLES

Class

- 1 Broccoli (1 bunch)
- 2 Brussel Sprouts (1 bunch)
- 3 Cabbage (1 head)
- 4 Cauliflower (1 bunch)
- 5 Corn, Sweet (3) Leave husks on
- 6 Corn, Other (3) Leave husks on

Class

- 7 Green Onions (1 bunch)
- 8 Kale (2)
- 9 Lettuce (2)
- 10 Spinach (1 bunch)
- 11 Any Other (specify) (2)

DIVISION 4 – FRESH HERBS

Class

- 1 Basil
- 2 Chives
- 3 Lavender
- 4 Mint - Specify Variety
- 5 Oregano

Class

- 6 Parsley - Specify Variety
- 7 Rosemary
- 8 Sage
- 9 Any Other (Specify)

DIVISION 5 – VINE CROPS

Class

- 1 Melon – Cantaloupe or Honeydew (1)
- 2 Cucumbers, Slicing (3)
- 3 Cucumbers, Pickling (3)
- 4 Watermelons (1)
- 5 Squash, Zucchini (2)

Class

- 6 Squash, Crook Neck (1)
- 7 Squash, Yellow (1)
- 8 Squash, Any other (specify) (1)
- 9 Gourds, Ornamental (3)
- 10 Pumpkin, Under 10 pounds (1)
- 11 Pumpkin, Over 10 pounds (1)

DIVISION 6 – STONE FRUITS

Class

- 1 Peaches, Cling (3)
- 2 Peaches, Freestone (3)
- 3 Apricots (3)
- 4 Nectarines (3)

Class

- 5 Cherry (12)
- 6 Dates (12)
- 7 Plums (3)
- 8 Mangoes (3)
- 9 Any Other (specify) (3)

DIVISION 7 – CITRUS FRUITS

Class

- 1 Oranges (3)
- 2 Lemons (3)
- 3 Limes (3)
- 4 Grapefruit (1)

DIVISION 8 – TABLE FRUITS & BERRIES

Class

- 1 Apples – Specify Variety (3)
- 2 Figs (3)
- 3 Grapes – (1 Large Bunch)
- 4 Pears – Specify Variety (3)
- 5 Papaya (3)

Class

- 6 Blueberries (12)
- 7 Blackberries (12)
- 8 Strawberries (12)
- 9 Raspberries (12)
- 10 Avocado (3)
- 11 Other (specify)

DIVISION 9 – MONSTROSITIES & ODDITIES

Class

- 1 Fruit or Vegetable – Oddity (1)
- 2 Fruit or Vegetable – Monstrosity (1)



NUTS & SEEDS



shutterstock.com • 2466495301

DIVISION 10 – NUTS & SEEDS – IN SHELL

In Shell Nuts - Minimum of eight (8) ounces, Maximum of one (1) pound. Last year's crop is permitted.

Class

- 1 Almonds, Any Variety (specify)
- 2 Walnuts, Any Variety (specify)
- 3 Any Other Type of Nut (specify)
- 4 Sunflower Seeds
- 5 Pumpkin Seeds/Pepitas

DIVISION 11 – NUTS & SEEDS – SHELLED NUTS

Shelled Nuts - Minimum of four (4) ounces, Maximum of eight (8) ounces.

Class

- 1 Almonds, Any Variety (specify)
- 2 Walnuts, Any Variety (specify)
- 3 Any Other Type of Nut (specify)
- 4 Sunflower Seeds
- 5 Pumpkin/Pepitas

EGGS

DIVISION 12 – EGGS

Class

- 1 White (6 Eggs – ½ Dozen in Carton)
- 2 Brown (6 Eggs – ½ Dozen in Carton)
- 3 Blue/Green (6 Eggs – ½ Dozen in Carton)
- 4 Any Other Color (specify) (6 Eggs – ½ Dozen in Carton)



BOUNTY OF THE COUNTY

DIVISION 13 – SPECIALTIES

Class

- 1 Fair-Themed (Ag-Cited) Display – Mixed Display of Fresh & Packaged Yolo County Commodities.
Maximum Size Container 20"L x 16"W x 8" H



- 2 Nuts About Yolo County – Picture or Display Of Painted Nut Shells



ADULT BAKING & CONFECTIONS



Awards Offered:

- **BEST OF SHOW:** \$25.00 (One awarded for Overall Baking & Confections)
- **RESERVE BEST OF SHOW:** \$15.00 (One awarded for Overall Baking & Confections)
- **BEST OF DIVISION:** Rosette

Entry Information:

- Entry Limit: Limit **2 entries per Division**
- Entries are to be delivered to the **Home Arts** Building August 11, 2025
- Deliver on: **August 11, 2025, from 1 pm to 8 pm PST.**

Rules:

- Eligibility: Open to Yolo County and Neighboring County residents, age 18 or older.
- Entries must have been home prepared by the exhibitor.
- Commercial mixes will be disqualified.
- Entries that spoil during the Fair will be removed.

Amounts:

- Muffins 1/4 dozen (3) plus 1 for tasting = 4 Total
- Cookies 1/4 dozen (3) plus 1 for tasting = 4 Total
- Cupcakes 1/4 dozen (3) plus 1 for tasting = 4 Total
- Cake-pops 1/4 dozen (3) plus 1 for tasting = 4 Total
- Cakes ½ cake plus 1 slice for tasting
- Breads ½ loaf plus 1 slice for tasting
- Pie One whole pie no larger than 9"
- Biscotti 4 pieces plus 2 for tasting
- Confections 4 pieces plus 2 for tasting

Wrapping Instructions:

- Bread - Must be exhibited in a self-sealing/Ziploc bag. No plate or cardboard.
- Biscuits & Rolls - Must be on a paper plate no larger than 8" in size and placed in the smallest self-sealing/Ziploc bag as possible.
- Cookies, Brownies, Confections and Candies must be on a 5- or 6-inch paper plate placed in one self-sealing/Ziploc sealed bag.
- Cakes: Loaf - Wrap in clear plastic on a cardboard base, base should not extend more than 1" beyond cake.
- Cakes: Round/Rectangular - Wrap in clear plastic on a cardboard base, base should not extend more than 1" beyond cake.
- Pies - Must be smoothly wrapped in clear plastic.
- Samples for judging (other than pie slices) must be in small self-sealing bags and securely attached to the outside of the entry.

DIVISION 100 – BREADS – Yeast

Class

- 1 White
- 2 Wheat
- 3 Rye
- 4 Sourdough
- 5 Any other not listed (specify)

DIVISION 101 – BREADS – Quick

Class

- 1 Banana Bread
- 2 Zucchini Bread
- 3 Pumpkin Bread
- 4 Corn Bread
- 5 Any other not listed (specify)

DIVISION 102 – BISCUITS & ROLLS

Class

- 1 Biscuits
- 2 Muffins – Any (specify)
- 3 Cinnamon Rolls
- 4 Any Other not listed (specify)



DIVISION 103 – FROSTED LAYER OR ROLLED CAKES

HOW TO EXHIBIT:

- Layer Cakes must be two (2) layers minimum
- Filling may be same as frosting or different
- One-minute frosting discouraged

Class

- 1 Layer Cake – Any (specify)
- 2 Rolled Cake – Any (specify)

DIVISION 104 – SINGLE LAYER & CUPCAKES

Class

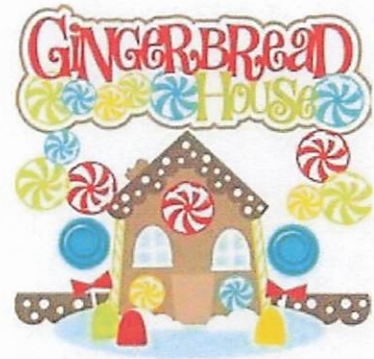
- 1 Coffee Cake
- 2 Bundt Cake – Any (specify)
- 3 Single Layer – Any Flavor (specify)
- 4 Upside Down Cake
- 5 Cupcakes – Any (specify)
- 6 Cheesecake – Any (specify)
- 7 Any Other not listed (specify)

DIVISION 105 – DECORATED FOODS

(Styrofoam or plastic base acceptable)

Class

- 1 Any Holiday
- 2 Gingerbread or Graham Cracker House
- 3 Wedding Cake
- 4 Any Other (specify)



DIVISION 106 – COOKIES

Class

- 1 Bar – Any (specify)
- 2 Brownies
- 3 Snicker Doodle Cookie
- 4 Peanut Butter Cookie
- 5 Chocolate Chip Cookie (with or without nuts)
- 6 Oatmeal Cookie (with or without nuts)
- 7 Fruit – Any (specify)
- 8 Shaped/Cut-Out
- 9 Any Other Cookie not listed (specify)

DIVISION 107 - CONFECTIONS

Class

- 1 Chocolate Fudge
- 2 Fudge – Other (specify)
- 3 Toffee
- 4 Popcorn
- 5 Candied Nuts
- 6 Truffles – Any (specify)
- 7 Any Other (specify)

DIVISION 108 - Pastries

Class

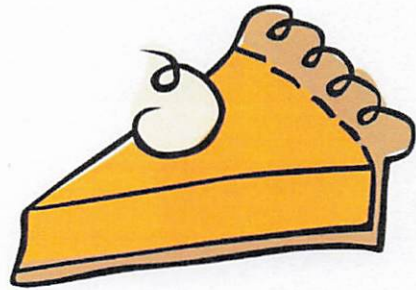
- 1 Fruit – Any (specify)
- 2 Cream
- 3 Cinnamon/Streusel

DIVISION 109 - PIES

(Pies – One crust or Two Crust)

Class

- 1 Apple
- 2 Cherry
- 3 Lemon
- 4 Pumpkin
- 5 Berry – Any (specify)
- 6 Cream
- 7 Any Other not listed (specify)



ADULT CLOTHING & TEXTILES



Awards Offered:

- **BEST OF SHOW:** \$25.00 (One awarded overall Clothing & Textiles)
- **RESERVE BEST OF SHOW:** \$15.00 (One awarded overall Clothing & Textiles)
- **BEST OF DIVISION:** Rosette

Entry Information:

- Entry Limit: Limit 2 entries per Division
- Entries are to be delivered to the **Home Arts** Building on August 6, 2025.
- Deliver on: **August 6, 2025, from 1 pm to 8 pm PST.**

Rules:

- Eligibility: Open to Yolo County and Neighboring County residents, age 18 or older.
- All entries must have been produced by the exhibitor within one (1) year of August 13, 2025, to be eligible for entry, judging and exhibit.
- Sweater sets, placemat sets, etc. must be pinned together to guard against loss.
- Functional toys and dolls must be child safe.
- Please have your name, address, and telephone number sewn in an unobtrusive seam in the garments and on the quilt-hanging strip.
- If you do not find a class for your entry in those listed under the Division where it should be entered, enter the item under Any Other.

DIVISION 201 - KNITTED ARTICLES

Class

- 1 Afghan – Any Size
- 2 Baby Item – Not Afghan
- 3 Shawl or scarf
- 4 Wearable's – Hats, tops, sweater, socks, vest, Etc.
- 5 Household item – Placemats, washcloths, tablecloths, etc.
- 6 Any Other not listed (specify)

DIVISION 202 - CROCHETED ARTICLES

Class

- 1 Afghans – Any Size
- 2 Baby Item – Not Afghan
- 3 Household Item -Doily, Runner, Dresser Scarf, Etc.
- 4 Shawl or scarf
- 5 Wearable's – Hats, Socks, Tops, Vests, Sweaters, Etc.
- 6 Any other (specify)

DIVISION 203 – HOUSEHOLD TEXTILES

Class

- 1 Cross-stitched
- 2 Embroidered
- 3 Appliqué
- 4 Tatted
- 5 Any Other (specify)

DIVISION 204 – TOYS AND HOUSEHOLD ITEMS

(Enter dolls only in Crafts and Hobbies section)

Class

- 1 Stuffed Animal
- 2 Any Other (specify)

DIVISION 205 – SEWN HOLIDAY TEXTILES

Class

- 1 Ornaments
- 2 Table Decoration
- 3 Any Other (specify)

DIVISION 206 – SEWN BABY OR CHILDREN

Class

- 1 Baby Apparel – Any
- 2 Children's Apparel – Sizes 2T and larger
- 3 Baby or Child Costume
- 4 Any Other (specify)

DIVISION 207 – SEWN ADULT WEAR

Class

- 1 Dress
- 2 Costume
- 3 Shirt or Blouse
- 4 Pants or Shorts
- 5 Any Other (specify)

DIVISION 208 – SEWN ACCESSORIES

Class

- 1 Purses / Bags
- 2 Any Other (specify)



ADULT CRAFTS & HOBBIES

Awards Offered:

- **BEST OF SHOW:** \$25.00
- **RESERVE BEST OF SHOW:** \$15.00
- **BEST OF DIVISION:** Rosette

Entry Information:

- Entry Limit: Limit 2 Entries per Division
- Entries are to be delivered to the **Waite Hall** on August 4, 2025.
- Deliver on: **August 4, 2025, from 1 pm to 8 pm PST.**

Rules:

- Eligibility: Open to Yolo County residents and neighboring counties, ages 18 or older.
- All entries must have been produced by the exhibitor within one (1) year of August 13, 2025 to be eligible for entry, judging and exhibit.
- If you do not find a class for your entry in those listed under the Division where it should be entered, enter the item under Any Other.

DIVISION 301 – CERAMICS & CLAY

MOLDED (Clay & Fired), Hydrocal (Gypsum Cement, Plaster, Non-Fired)

Class

- 1 Bird or Animal (specify)
- 2 Figurine (specify)
- 3 Plate, Bowl, Planter or Vase
- 4 Holiday Items (specify)
- 5 Any Other Ceramic (specify)

DIVISION 302 - WOODWORKING

Class

- 1 Small Furniture (No larger than 24"x 24" x 24")
- 2 Birdhouse
- 3 Wooden Signs
- 4 Jewelry Box



- 5 Barnwood Projects (specify)
- 6 Wood Pallet Projects (specify)
- 7 Large Furniture (Larger than 24" x 24" x 24")
- 8 Any Other (specify)

DIVISION 303 – METAL WORK

Class

- 1 Metal Sculpture
- 2 Metal Wall Hanging
- 3 Horseshoe Projects
- 4 Wind Chimes
- 5 Any Other (specify)



DIVISION 304 – EVERYDAY & HOLIDAY CRAFTS

Class

- 1 Diamond Dots – Any (no larger than 16" x 16" x 16")
- 2 Cricut – Any item (specify)
- 3 Paper Mache'
- 4 Diorama (no larger than 16' x16' x 16")
- 5 Candle making
- 6 Seashell Art
- 7 Stained Glass
- 8 Model or Kit
- 9 LEGO
- 10 Trash to Treasure (Made with recycled products)
- 11 Homemade Soaps
- 12 Tye Dye Items (specify)
- 13 Any Other (specify)

DIVISION 305- BEADING

Class

- 1 Jewelry
- 2 Purse
- 3 Any Other (specify)

DIVISION 306 - JEWELRY MAKING

Class

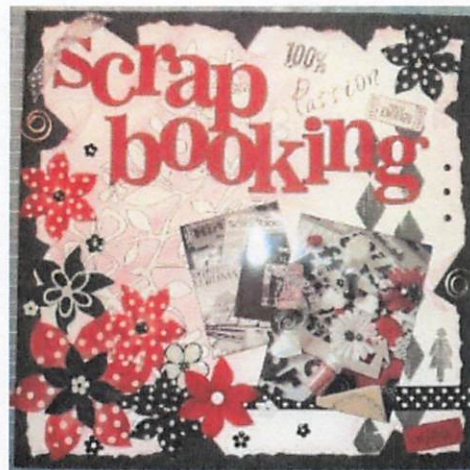
- 1 Individual Item
- 2 2 Piece Set
- 3 Any Other (specify)

DIVISION 307 – SCRAPBOOKING

Exhibitors may submit one or two-page theme spread in a protective sleeve from a scrapbook for judging and layout. DO NOT SUBMIT the whole book. Provide name and address on back of exhibit.

Class

- 1 People
- 2 Holiday
- 3 Sports
- 4 Vacation/Travel
- 5 Any Other (specify)



ADULT

FINE ART DEPT - PAINTING OR DRAWING



Rules:

- Eligibility: Open to Yolo County residents and neighboring counties, ages 18 or older.
- Entry Limit: Limit 2 Entries per Division
- Exhibits must not have been shown previously at the Yolo County Fair in any category.
- Work must have been completed within (24) twenty-four months of August 13, 2025, and was not entered in the 2024 Yolo County Fair.
- Every entry will be hung unless entries exceed hanging space. If this should occur, selection will be unbiased and based on judged results.
- Only original 2 dimensional artwork will be accepted.
- **No 3 Dimensional wall hangings, water or motor driven features allowed.**
- In determining the proper division to enter your painting, use the main subject of the painting.
- Use the medium to determine the correct class number.
- Select Sub Class Category
- You may only enter in one of the following three (3) Classifications:
 1. **PROFESSIONAL/ADVANCED:** A person who has painted or drawn for over 5 years with any medium, or you have won a Best Overall, First, Second, or Third place in the previous year in the Intermediate Classification or engages in the activity for monetary profit, i.e. someone who derives income from Fine Arts such as a Paid Instructor (not a volunteer), Teacher or Professor of Fine Arts, or an artist who exhibits his/her work for sale, from which a commission is paid.
 2. **SEMI-PROFESSIONAL/INTERMEDIATE:** Open to those who have painted or drawn for 3-4 years with any medium, or you have won a Best Overall, First, Second, or Third place in the previous year. Does not sell their Artwork for profit.
 3. **NOVICE/AMATEUR:** Open to those who have painted or drawn for less than 3 years with any medium, has never won a Best Overall in this category in the previous year.
- All entries will be judged but will be displayed at the discretion of Management.
- The Yolo County Fair reserves the right to reject any work that does not comply with the rules and/or definitions of questionable taste for a family event.
- Paintings of nude figures will not be accepted for judging or display.

- Fair Management shall not be responsible for any accidental loss that may occur to exhibitors or exhibits at any showing. Exhibitors shall hold Management harmless and indemnify it against any legal proceeding arising from such an accident or loss.

How to Prepare Painting Exhibits:

1. Paintings and drawings must be framed. Size cannot exceed 48" x 36". This measurement includes the frame.
2. Each painting must be securely wired for hanging. Measure to be sure the screw eyes are evenly spaced so that the wire will be even, and the painting will hang straight. See below for acceptable hangers.
3. Paintings with painted sides and all staples in the rear are considered framed. The following will disqualify your entry:
 - Metal hanging brackets
 - Paper or glass frame
 - Tape or string from which to hang painting
 - Bracketed frames
 - Any copies of original work done by any process.



NOVICE/AMATEUR

Awards Offered:

- **BEST OF SHOW:** \$25.00
- **RESERVE BEST OF SHOW:** \$15.00
- **BEST OF DIVISION:** Rosette

Entry Information:

- Entries are to be delivered to the **Waite Hall** on August 4, 2025
- Deliver on: **August 4, 2025, from 1 pm to 8 pm PST**

DIVISION 401 – NOVICE/AMATEUR ARTS

Paintings & Drawings

Class

- 1 Oil /Acrylic
- 2 Watercolor
- 3 Pen/Pencil/Charcoal/Pastel
- 4 Mixed Media
- 5 Encaustic
- 6 Any Other (specify)

Sub Class Categories

- A. Abstract/Non-Objective
- B. Landscape Without Water
- C. Landscape With Water
- D. Ocean/Seascape
- E. Still Life (ex: Lamp on a table)
- F. Bridges or Structures (Not Barns)
- G. Cityscape
- H. Domestic Animals
- I. Wild Animals
- J. People
- K. Portrait
- L. Floral/Flowers
- M. Tractors of Yolo County
- N. Barns of Yolo County
- O. ***2025 Fair Theme*** "Totally Ag-Cited) (Artist Interpretation)
- P. Any other not listed (specify)

SEMI-PROFESSIONAL

Awards Offered:

- **BEST OF SHOW:** \$25.00
- **RESERVE BEST OF SHOW:** \$15.00
- **BEST OF DIVISION:** Rosette

Entry Information:

- Entries are to be delivered to the Waite Hall.
- See Still Exhibit Schedule for receiving of entry, judging and pick-up dates/times.

DIVISION 402 – SEMI-PROFESSIONAL/INTERMEDIATE ARTS

Paintings & Drawings

Class

- 1 Oil /Acrylic
- 2 Watercolor
- 3 Pen/Pencil/Charcoal/Pastel
- 4 Mixed Media
- 5 Encaustic
- 6 Any Other (specify)

Sub Class Categories

- A. Abstract/Non-Objective
- B. Landscape Without Water
- C. Landscape With Water
- D. Ocean/Seascape
- E. Still Life (ex: Lamp on a table)
- F. Bridges or Structures (Not Barns)
- G. Cityscape



- H. Domestic Animals
- I. Wild Animals
- J. People
- K. Portrait
- L. Floral/Flowers
- M. Tractors of Yolo County
- N. Barns of Yolo County
- O. ***2025 Fair Theme*** "Totally Ag-Cited) (Artist Interpretation)
- P. Any other not listed (specify)

PROFESSIONAL SCULPTURES

Awards Offered:

- **BEST OF SHOW:** \$25.00
- **RESERVE BEST OF SHOW:** \$15.00
- **BEST OF DIVISION:** Rosette

Entry Information:

- Entries are to be delivered to the **Waite Hall**.
- See Still Exhibit Schedule for receiving of entry, judging and pick-up dates/times.

DIVISION 403 – PROFESSIONAL/ADVANCED ARTS

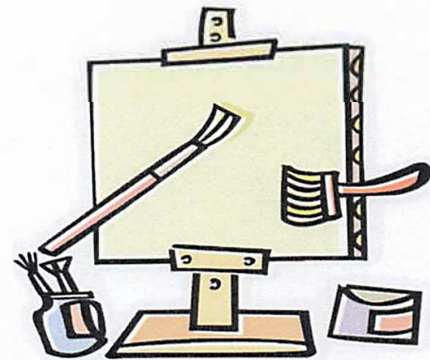
Paintings & Drawings

Class

- 1 Oil /Acrylic
- 2 Watercolor
- 3 Pen/Pencil/Charcoal/Pastel
- 4 Mixed Media
- 5 Any Other (specify)

Sub Class Categories

- A. Abstract/Non-Objective
- B. Landscape Without Water
- C. Landscape With Water
- D. Ocean/Seascape
- E. Still Life (ex: Lamp on a table)
- F. Bridges or Structures (Not Barns)
- G. Cityscape
- H. Domestic Animals
- I. Wild Animals
- J. People
- K. Portrait
- L. Floral/Flowers
- M. Tractors of Yolo County
- N. Barns of Yolo County
- O. ***2025 Fair Theme*** "Totally Ag-Cited) (Artist Interpretation)
- P. Any other not listed (specify)



ART AUCTION INFORMATION

Friends of Art will be hosting the ART auctions again for the
2025 Yolo County Fair!

Benefit Auction

Friends of Art sells donated artworks; the entire purchase price goes to fund the art programs in the local Yolo County high schools. If you are an artist who would like to donate a piece of artwork, please bring it to Waite Hall on August 4, 2025, between 1 pm and 8 pm PST. If you entered your item as an exhibit for the fair and then to be donated, please specify this on your online entry as well as when you are checking your exhibit in. One of our Friends of Art volunteers will check the item in and give you a receipt for it. Items will then be tagged and displayed for fairgoers and art lovers to bid during the 2025 Yolo County Fair! The winning bidder will pay the auction clerk at the end of the auction.

Artist Auction

Artists who enter this Auction pay a fee to Friends of Art upon submission of the artwork. Friends of Art will display and promote bidding during the 2025 Yolo County Fair. The winning bidder will be contacted directly by the Artist following the close of the fair. It is up to the Artist and the buyer to coordinate payment and delivery art piece.

If you are an artist who would like to submit items to this auction, please bring it to Waite Hall on August 4, 2025, between 1 pm and 8 pm PST. If you entered your item as an exhibit for the fair and then to be donated, please specify this on your online entry as well as when you are checking your exhibit in.

ADULT FLORICULTURE DEPARTMENT



POTTED PLANTS – HANGING & STATIONARY

Awards Offered:

- **BEST OF SHOW:** \$25.00 & Rosette
- **RESERVE BEST OF SHOW:** \$15.00 & Rosette
- **BEST OF DIVISION:** Rosette

Entry Information:

- Entry Limit: Limit 1 Entry per Class
- Entries are to be delivered to **the Plaza** (formerly the flower house) on August 11, 2025.
- Deliver on: **August 11, 2025, from 1 pm to 8 pm PST.**

Rules:

- Eligibility: Open to Yolo County residents and neighboring counties, ages 18 or older.
- Open to Yolo County Residents.
- If a hanging plant, specify on the entry form.
- Each entry must be labeled with Exhibitor's name on bottom of containers.
- Each container may have only one variety unless otherwise specified.
- The exhibitor must have planted & cared for plants for the past four months.
- Exhibitors must provide non-leaking drainage saucers for potted plants.
- Exhibitor provides all potting containers unless otherwise specified.
- Potted Plants must be clean and insect/disease free or entries will be disqualified from the show and asked to be removed from the fairgrounds immediately.
- Floriculture staff will water and maintain potted plants and garden exhibits, excluding bonsais, succulents and cacti.
- Exhibitors with plants requiring special care in watering may leave written instructions with Floriculture staff.
- If a plant qualifies for a specific class, it must be entered in that class rather than in "Other potted plant display".

DIVISION 501 – POTTED - STATIONARY or HANGING PLANTS

Class

- 1 African Violets
- 2 Begonia
- 3 Flowering or Blooming Plant – Any (specify)
- 4 Herbs – Any (specify)
- 5 Cactus – Single
- 6 Cactus - Multiple
- 7 Jade
- 8 Lavender
- 9 "Asparagus" Plant
- 10 Fern
- 11 Fuchsia
- 12 Geranium
- 13 Creeping Charlie

Class

- 14 Impatiens
- 15 Orchid
- 16 Philodendron
- 17 Petunias
- 18 Miniature Roses
- 19 Roses
- 20 Spider Plant
- 21 Succulents
- 22 Tropical
- 23 Mixed Plants in same container
- 24 Wandering Jew
- 25 Foliage Plant
- 26 Any Other (specify)

DIVISION 502 – PLANTS IN UNUSUAL CONTAINERS

Class

- 1 Shoe or Boot
- 2 Surprise Us! (specify)

DIVISION 503 – DISH GARDEN

Class

- 1 Fairy Garden
- 2 Succulent Dish Garden
- 3 Terrarium
- 4 Any Other (specify)



FLORAL ARRANGEMENTS

Awards Offered:

- **BEST OF SHOW:** \$25.00 & Rosette
- **RESERVE BEST OF SHOW:** \$15.00 & Rosette
- **BEST OF DIVISION:** Rosette

Entry Information:

- Entry Limit: Limit **1 Entry per Division**
- Entries are to be delivered to **the Plaza** (formerly the flower house) **on varying dates.**
- See **Exhibit Key Date and Deadlines for Detailed Receiving Times for these entries.**

Rules:

- Eligibility: Open to Yolo County residents and neighboring counties, ages 18 or older.
- The Plaza will be open at 10 am daily. Arrangements are to be completed and in place by 11am. Judging to be completed 11:15 am each day.
- Use of accessories, to scale (figurines, shells, etc.) is limited to a max of 10% of the total arrangement.
- The exhibitor will furnish his/her own container. Please check to see that the container holds water and has no leaks. If your container does not hold water, it will be removed from the flower show.
- Exhibitors are to use primarily fresh plant material but may include up to 10% dried material
- Exhibitors may not use: artificial fruits, artificial vegetables, or artificial flowers.
- Exhibitors are to place arrangements in the designated area the way the exhibitor wants the judge to view the arrangement. Arrangements **MAY NOT BE MOVED** until after judging.
- You may only enter into one of following two Classifications:
 1. **NOVICE:** Open to amateurs who have not entered more than four judged competitions.
 2. **INTERMEDIATE:** Open to amateurs who have entered between five and ten previous judged competitions.
 3. **ADVANCED:** Open to non-professionals who have entered ten or more previously judged competitions

FLORAL ARRANGEMENTS

DIVISION 504 – WEDNESDAY - Arrangements are made off site & **Delivered on Wednesday.**

Class

- | | | |
|---|--------------|---|
| 1 | Novice | 2025 Fair Theme: Totally Ag-Cited! |
| 2 | Intermediate | 2025 Fair Theme: Totally Ag-Cited! |
| 3 | Advanced | 2025 Fair Theme: Totally Ag-Cited! |

DIVISION 505 – THURSDAY – Arrangements are made off site & **Delivered on Thursday.**

Class

- | | | |
|---|--------------|-----------------------------|
| 1 | Novice | Theme: Red, White, and Blue |
| 2 | Intermediate | Theme: Citrus Burst |

3 Advanced Theme: Meet me at the Winery

DIVISION 506 – FRIDAY – Arrangements are made off site & **Delivered on Friday.**

Class

- | | | |
|---|--------------|-----------------------------|
| 1 | Novice | Theme: Enchanted Garden |
| 2 | Intermediate | Theme: Woodland Whimsy |
| 3 | Advanced | Theme: How the West was Won |

DIVISION 507 – SATURDAY– Arrangements are made off site & **Delivered on Saturday**

Class

- | | | |
|---|--------------|--------------------------|
| 1 | Novice | Theme: Time to Play Ball |
| 2 | Intermediate | Theme: Vintage Elegance |
| 3 | Advanced | Theme: Kentucky Derby |

CUT FLOWER SHOW

Awards Offered:

- **BEST OF DIVISION:** Rosette

Entry Information:

- Entry Limit: Limit **2 Entries per Class**
- Entries are to be delivered to **the Plaza** (the flower house) on August 13, 2025
- Deliver on: **August 13, 2025, from 11 am to 1 pm PST.**



Rules:

- Eligibility: Open to Yolo County residents, ages 18 or older.
- Cut Flowers will be placed in containers supplied by the Fair.
- Enter the exact number of stems or blooms specified in each class. Inaccurate count will be disqualified.
- A bloom must be at least ¼ open (a bud is not a bloom).
- Management reserves the right to dispose of cut flowers that wilt.
- DO NOT pull petals off any entry.
- Cut flowers will remain on display for the duration of the Fair.
- No cut flower entry may be used for competition in any other division. Cut flower entries may not come from any other Division in the Floricultural Department.

DIVISION 508 – CUT FLOWERS

Class

- | | |
|---|-------------------------------|
| 1 | Dahlias- (one stem) |
| 2 | Rose - (bloom(s) on one stem) |
| 3 | Delphinium - (three stems) |
| 4 | Hibiscus – (three stems) |
| 5 | Tea Roses (one stem) |
| 6 | Hydrangea (one stem) |
| 7 | Clematis (three stems) |
| 8 | Cone Flower (one stem) |
| 9 | Amaryllis (one stem) |

- 10 Lily (one stem)
- 11 Marigold (one stem)
- 12 Sunflower (one stem)
- 13 Any other single stem not listed (specify)

FAUX FLORAL ARRANGEMENTS

Awards Offered:

- **BEST OF DIVISION:** \$10.00 & Rosette
- **BEST OF CLASS:** Rosette

Entry Information:

- Entry Limit: Limit **1 Entry per Division**
- Entries are to be delivered to **the Plaza** (the flower house) on August 11, 2025.
- Deliver on: **August 11, 2025, from 1 pm to 8 pm PST**

DIVISION 509 – Faux Floral Arrangements

Class

- 1 Wreath – Novice
- 2 Wreath – Intermediate
- 3 Wreath – Advanced
- 4 Paris Hilton Pink & Sparkly – Novice
- 5 Paris Hilton Pink & Sparkly – Intermediate
- 6 Paris Hilton Pink & Sparkly – Advanced
- 7 2025 Fair Theme: **Totally Ag-Cited!** – Novice
- 8 2025 Fair Theme: **Totally Ag-Cited!** – Intermediate
- 9 2025 Fair Theme: **Totally Ag-Cited!** – Advanced



ADULT PHOTOGRAPHY DEPARTMENT

Entry Information:

- Entry Limit: **5 Entries per division**
- Entries are to be delivered to the **Waite Hall** on August 4, 2025.
- Deliver on: **August 4, 2025, from 1 pm to 8 pm PST.**

Rules:

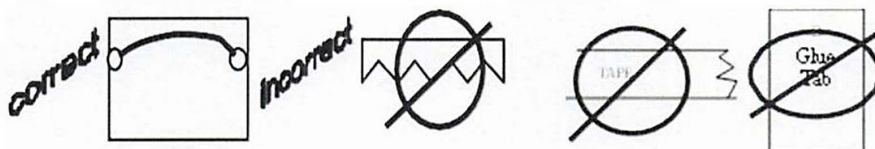
- Eligibility: Open to Yolo County residents and neighboring counties, ages 18 or older.

Requirements:

- Photographs must have been taken after August 1, 2024, and not entered in the 2024 Yolo County Fair
- Every entry will be judged and displayed at the discretion of the Fair Management.

How to prepare photographs for exhibit:

- **No entry may be less than 8" X 10" and no more than 36" x 24" including frame.**
- **All photographs must be framed properly with the correct wired hanger. No clamp, sawtooth, tape, or glued hangers will be accepted.**



- The exhibitor's name and phone number must show clearly on the back of each entry.
- Loose photos will not be accepted.
- **No** name or title shall be shown on the front of the print or frame.
- General class definition: Those entries that do not fit into existing classes
- You may enter in only **one** of the following three Classifications:
 1. **ADVANCED/PROFESSIONAL:** Open to those who have been photographing for over 5 years, or have won a Best Overall, First, Second, or Third place in the intermediate category previously, or a person who engages in Photography for monetary profit, i.e. someone who derives income from Photography such as a Paid Instructor (not a volunteer), Teacher or Professor of Photography, or a photographer who exhibits his/her work for sale, from which a commission is paid.
 2. **INTERMEDIATE/SEMI-PRO:** **Open** to those who have been photographing for 3-4 years, or you have won a Best Overall, first, second, or third place in the Novice category/division in previous years.
 3. **NOVICE/AMATEUR:** Open to those who engage in Art as a hobby, have photographed for less than 3 years, and whose returns from sales, if any, do not exceed the cost of the materials for the articles sold.

Disqualifications:

- Using wood, metal or glass as a mount will disqualify the entry.
- Incorrect hangers on frame.
- Photographs containing nude figures or inappropriate exposure. Disqualification is at the discretion of Fair Management.

NOVICE PHOTOGRAPHY

Awards Offered:

- **BEST OF SHOW:** \$25.00
- **RESERVE BEST OF SHOW:** \$15.00
- **BEST OF DIVISION:** Rosette



DIVISION 600 – NOVICE - BLACK & WHITE PHOTOGRAPHY

Class

- 1 Domestic Animals
- 2 Wildlife Animals
- 3 Farm Equipment (any type)
- 4 Landscape with water
- 5 Cityscape
- 6 Landscape without water
- 7 Ocean/Seascape
- 8 People
- 9 Portraits
- 10 Babies/Children

Class

- 11 Bridges or Structures (No Barns)
- 12 Floral/Flowers
- 13 Trees
- 14 Sports
- 15 Sunrise/Sunset/Sky
- 16 Barns of Yolo County
- 17 ***Fair Theme*** "Totally Ag-Cited" (Your Interpretation)
- 18 Any Other (Specify)

DIVISION 601 – NOVICE -COLOR PHOTOGRAPHY

Class

- 1 Domestic Animals
- 2 Wildlife Animals
- 3 Farm Equipment (any)
- 4 Landscape with Water
- 5 Cityscape
- 6 Landscape without Water
- 7 Ocean/Seascape
- 8 People

Class

- 9 Portraits
- 10 Babies/Children
- 11 Bridges or Structures (No Barns)
- 12 Floral/Flowers
- 13 Trees
- 14 Sports
- 15 Sunrise/Sunset/Sky
- 16 Barns of Yolo County
17. *** Fair Theme*** "Totally Ag-Cited"(Your interpretation)
18. Any other (Specify)

INTERMEDIATE PHOTOGRAPHY

Awards Offered:

- **BEST OF SHOW:** \$25.00
- **RESERVE BEST OF SHOW:** \$15.00
- **BEST OF DIVISION:** Rosette



DIVISION 602 – INTERMEDIATE - BLACK & WHITE PHOTOGRAPHY

Class

- 1 Domestic Animals
- 2 Wildlife Animals
- 3 Farm Equipment (any type)
- 4 Landscape with water
- 5 Cityscape
- 6 Landscape without water
- 7 Ocean/Seascape
- 8 People
- 9 Portraits
- 10 Babies/Children

Class

- 11 Bridges or Structures (No Barns)
- 12 Floral/Flowers
- 13 Trees
- 14 Sports
- 15 Sunrise/Sunset/Sky
- 16 Barns of Yolo County
- 17 ***Fair Theme*** "Totally Ag-Cited" (Your Interpretation)
- 18 Any Other (Specify)

DIVISION 603 – INTERMEDIATE -COLOR PHOTOGRAPHY

Class

- 1 Domestic Animals
- 2 Wildlife Animals
- 3 Farm Equipment (any)
- 4 Landscape with Water
- 5 Cityscape
- 6 Landscape without Water
- 7 Ocean/Seascape
- 8 People

Class

- 9 Portraits
- 10 Babies/Children
- 11 Bridges or Structures (No Barns)
- 12 Floral/Flowers
- 13 Trees
- 14 Sports
- 15 Sunrise/Sunset/Sky
- 16 Barns of Yolo County
17. *** Fair Theme*** "Totally Ag-Cited"(Your interpretation)
18. Any other (Specify)

ADVANCED PHOTOGRAPHY

Awards Offered:

- **BEST OF SHOW:** \$25.00
- **RESERVE BEST OF SHOW:** \$15.00
- **BEST OF DIVISION:** Rosette



DIVISION 604 – ADVANCED/PROFESSIONAL - BLACK & WHITE PHOTOGRAPHY

Class

- 1 Domestic Animals
- 2 Wildlife Animals
- 3 Farm Equipment (any type)
- 4 Landscape with water
- 5 Cityscape
- 6 Landscape without water
- 7 Ocean/Seascape
- 8 People
- 9 Portraits
- 10 Babies/Children

Class

- 11 Bridges or Structures (No Barns)
- 12 Floral/Flowers
- 13 Trees
- 14 Sports
- 15 Sunrise/Sunset/Sky
- 16 Barns of Yolo County
- 17 ***Fair Theme*** "Totally Ag-Cited" (Your Interpretation)
- 18 Any Other (Specify)

DIVISION 605 – ADVANCED/PROFESSIONAL - COLOR

PHOTOGRAPHY Class

Class

- | | |
|---------------------------|---|
| 1 Domestic Animals | 9 Portraits |
| 2 Wildlife Animals | 10 Babies/Children |
| 3 Farm Equipment (any) | 11 Bridges or Structures (No Barns) |
| 4 Landscape with Water | 12 Floral/Flowers |
| 5 Cityscape | 13 Trees |
| 6 Landscape without Water | 14 Sports |
| 7 Ocean/Seascape | 15 Sunrise/Sunset/Sky |
| 8 People | 16 Barns of Yolo County |
| | 17. *** Fair Theme*** "Totally Ag-Cited"(Your interpretation) |
| | 18. Any other (Specify) |

ADULT PRESERVED FOODS



Awards Offered:

- **BEST OF SHOW:** \$25.00 (One awarded for all Divisions)
- **RESERVE BEST OF SHOW:** \$15.00 (One awarded for all Divisions)
- **BEST OF DIVISION:** Rosette (One awarded per Division)

Entry Information:

- Entry Limit: **1** Entries per **Class**
- Entries are to be delivered to the **Home Arts** building on **August 6, 2025**
- Deliver on: **August 6, 2025, from 1 pm to 8 pm PST.**

Rules:

- Eligibility: Open to Yolo County and Neighboring County residents, ages 18 or older.
- All entries in this Adult Category must be home prepared and processed by the exhibitor within one (1) year of the opening date of the Fair.
- Items which have been shown at any previous Yolo County Fair are NOT eligible.
- Standard Jar: A container specifically or specially designed for canning purposes. Paraffin seals will not be accepted. All canning must be sealed in jars.
- Containers to use:
 - Fruits and Vegetables- For display 1 **Pint** (16 oz) or larger, clear glass, narrow or wide mouth Mason jar. For tasting sample – clear glass jar can be as small as 4 oz.
 - Jams, Jellies, and Preserves- For display 1 **Pint** (16 oz) or larger clear glass jelly jars (sealed with a lid), or clear mason jars.
 - Dried Foods: For display 1 **Pint** (16 oz) or larger, clear glass, narrow or wide mouthed Mason jar. For tasting sample – can be as small as 4 oz sealed glass jar or vacuum sealed bag.
- Non-Acid Foods- All vegetables must be canned under pressure. Low acid fruit, such as figs, should be made with more acid by adding lemon juice as directed in the University Agricultural Extension Service leaflet, USDA Complete Guide to Home Canning (2015).
- Tomatoes and fruits (not including their juices) must be processed in a boiling water bath.

- Exhibits must be accurately labeled on the bottom of the jar with the exhibitor's name and name of item.
- Exhibitors are required to bring two (2) jars of each entry.
- One will be used for the actual judging process; the other will be used for display.
- Any Other classes are for those items that do not fit into the classes described in the Division and Class listing.

DIVISION 700 – CANNED FRUIT

Class

- 1 Applesauce
- 2 Peaches
- 3 Plums
- 4 Strawberries
- 5 Pears
- 6 Any Other (specify)

DIVISION 701 - CANNED VEGETABLES

Class

- 1 Asparagus
- 2 Beans, green or waxed
- 3 Corn
- 4 Carrots
- 5 Squash (any variety)
- 6 Tomatoes, whole pack
- 7 Any Other (specify)

DIVISION 702 - JAMS

Class

- 1 Fig
- 2 Peach
- 3 Plum
- 4 Grape
- 5 Strawberry
- 6 Raspberry
- 7 Blackberry
- 8 Any Combination of Class 1-7
- 9 Any Other (specify)

DIVISION 703 – JELLIES

Class

- 1 Grape
- 2 Blackberry
- 3 Raspberry
- 4 Strawberry
- 5 Pomegranate
- 6 Any Combination of Class 1-5
- 7 Pepper (any)
- 8 Mint
- 9 Any Other (specify)



DIVISION 704 - MARMALADES / BUTTER

Class

- 1 Marmalade, Orange
- 2 Marmalade, Any Other (specify)
- 3 Apple Butter
- 4 Pumpkin Butter
- 5 Butter, Any Other (specify)



DIVISION 705 - PICKLES, VINEGAR, & DRIED FOOD PRODUCTS

Vegetable Pickles

Class

- 1 Dill Pickles
- 2 Bread & Butter pickles
- 3 Any Other (specify)
- 4 Vinegar, Any (Specify)

Dried Food Products

Class

- 5 Fruit - Any (Specify)
- 6 Jerky - Domestic (specify)
- 7 Vegetables
- 8 Herbs

Homemade Salsa

Class

- 9 Salsa Red or Green - Hot
- 10 Salsa Red or Green- Mild
- 11 Fruit Salsa
- 12 Any Other (specify)

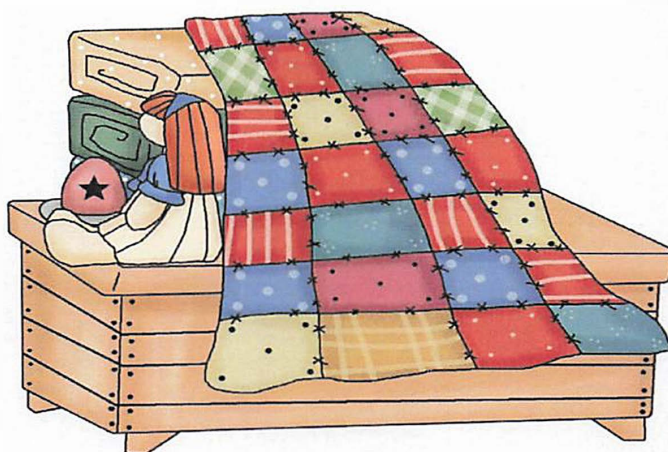


DIVISION 706 - SYRUPS & SAUCES

Class

- 1 Fruit Sauce, Any (Specify)
- 2 Fruit Syrup, Any (Specify)
- 3 Any Other Sauce (Specify)
- 4 Any Other Syrup (Specify)

ADULT QUILT SHOW



Awards Offered

- **BEST OF SHOW:** \$25.00
- **RESERVE BEST OF SHOW:** \$15.00
- **BEST OF DIVISION:** Rosette

Entry Information:

- Entry Limit: **5 Entries**
- Entries are to be delivered to the **Home Arts** hall on August 6, 2025
- Deliver on: **August 6, 2025, from 1 pm to 8 pm PST**

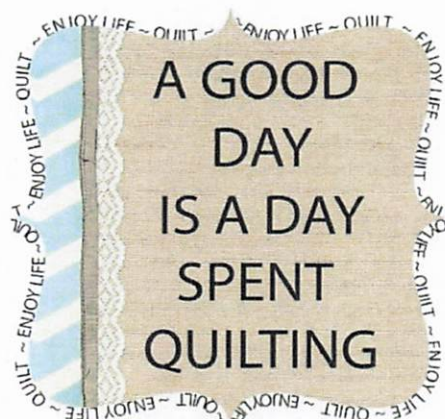
Rules:

- Eligibility: Open to Yolo County residents and neighboring counties, ages 18 or older.
- All entries must have been home produced by the exhibitor within the two (2) years prior to the opening day of the fair (August 12, 2025) to be eligible for entry, judging and exhibit.
- Please have your name, address and telephone number sewn in the lower left-hand corner on back of quilt.
- Quilts must have hanging sleeve or loops sewn to the top edge to be eligible for exhibit and competition.
- If you do not find a class for your entry in those listed under the Division where it should be entered, enter the item under Any Other.

DIVISION 800 – QUILTS

Class

- 1 Large – Hand Quilted
 - Measures 71" or more on the longest side. Hand or machine pieced, and **hand quilted** by the maker.
- 2 Medium – Hand Quilted
 - Measure 48" to 70" on the longest side. Hand or machine pieced, and **hand quilted** by the maker.
- 3 Wall – Hand Quilted
 - Measures less than 48" on the longest side. Hand or machine pieced, and **hand quilted** by the maker.
- 4 Large - Machine Quilted
 - Measures 71" or more on the longest side. Machine pieced and **machine quilted** by the maker.
- 5 Medium - Machine Quilted
 - Measures 48" to 70" on the longest side. Machine pieced and **machine quilted** by the maker.
- 6 Wall – Machine Quilted
 - Measures less than 48" on the longest side. Machine pieced and **machine quilted** by the maker.
- 7 Group Quilted - Large
 - Measures 71" or more on the longest side. **Group quilted**
- 8 Group Quilted -Medium
 - Measures 48" to 70" on the longest side. **Group quilted.**
- 9 Group Quilted - Wall
 - Measures less than 48" on the longest side. **Group quilted.**
- 10 Infant – Hand Quilted
 - Measures 46" or less on the longest side. Hand or machine pieced, and **hand quilted** by the maker.
- 11 Infant - Machine Quilted
 - Measures 46" or less on the longest side. Machine pieced and **machine quilted** by the maker.
- 12 Applique – Any Size
 - Specialty Techniques, Embellished, Embroidered, 3D, etc.



ADULT SPECIAL FRIENDS – SPECIAL PROJECTS

Awards Offered

- **BEST OF SHOW:** \$25.00
- **RESERVE BEST OF SHOW:** \$15.00
- **BEST OF DIVISION:** Rosette

Entry Information:

- Entry Limit: **2 Entries per Class**
- Entries are to be delivered to the **Waite Hall** on August 4, 2025.
- Deliver on: **August 4, 2025, from 1 pm to 8 pm PST**

Rules:

- **Division is only for Senior/Disabled Care Groups, Senior Citizens, & Disabled Adults**
- Residents may reside in a private home, rest home, or convalescent/care facility.
- Open for Individual and Group Projects
- Exhibitors entering this category are not eligible to enter any other Adult category.
- All classes will be judged Danish
- Every entry must be clearly marked on back or bottom with Exhibitor Name, Address, & Phone number

DIVISION 850 – Special Friends

Class

- 1 Any Drawing – Pen, pencil, or crayon
- 2 Any Holiday Craft
- 3 Any Painting – Watercolor, Acrylic/Oil, Mixed Media
- 4 Any Ceramic Item
- 5 Photograph – Colored or Black & White
- 6 Wreath
- 7 Any Group Project
- 8 Any other not listed (specify)



FAIR SPECIALTY CONTESTS

FLOWERING WINE BARREL COMPETITION

Awards and Premiums Offered:

- **BEST OF SHOW:** Rosette and \$25.00
- **RESERVE BEST OF SHOW:** Rosette and \$20.00

Entry Information:

- Entry Fee: \$10.00
- Entry Limit: Limited to the **first 5 entries**
- Danish System of Judging
- See **Exhibit Key Dates and Deadlines for Delivery & Receiving Dates and Times.**



Rules:

- Eligibility: Open to all Yolo County Residents and neighboring counties, ages 18 or older, organizations, churches, lodges, clubs, etc.
- Fair will provide an empty wine barrel.
- Season to taste with flowers, color foliage and other plants.
- Do not use articles of value.
- No dyed, artificial or painted flowers.
- The following are not permitted in flower shows: natural bird nests, "stuffed birds", insects, live fish, birds or other animals.
- Any accessories must be secured and shall remain for the duration of the fair.
- Setup will be in **the Plaza**, Monday, August 11, 2025, 8 am – 8 pm and Tuesday, August 12, 2025, 8 am – 8 pm and must be completed and in place by Tuesday August 12, 2025, 8:00 pm.
- All Wine Barrels must meet the following requirements:
 - ♦ A minimum of 50% color
 - ♦ 40% of other living plant material
 - ♦ 10% for other materials and accessories
 - ♦ Refurbishing and watering during the Fair will take place between 9 am and 11 am.

DIVISION 901 – WINE BARREL COMPETITION

Class

- 1 Flowering Wine Barrel Competition

FLOWERING WHEELBARROW/WAGON COMPETITION

Awards Offered:

- **BEST OF SHOW:** Rosette and \$50.00
- **RESERVE BEST OF SHOW:** Rosette and \$25.00

Ribbons: 1st-5th Place

Entry Information:

- Entry Fee: \$20.00
- Entry Limit: Limited to the **first 5 entries per class**
- Danish System of Judging
- See **Exhibit Key Dates and Deadlines for Delivery & Receiving Dates and Times.**



Rules:

- Eligibility: Open to all Yolo County Residents and neighboring counties, ages 18 or older, organizations, churches, lodges, clubs, etc.
- You provide the wheel barrel, new or old.
- Season to taste with flowers, color foliage and other plants.
- Do not use articles of value.
- No dyed, artificial or painted flowers.
- The following are not permitted in flower shows: natural bird nests, "stuffed birds", insects, live fish, birds or other animals.
- Any accessories must be secured and shall remain for the duration of the fair.
- Setup will be in **the Plaza**, Monday, August 11, 2025, 8 am – 8 pm and Tuesday, August 12, 2025, 8 am – 8 pm and must be completed and in place by Tuesday August 12, 2025, 8:00 pm.
- All Wheel Barrels must meet the following requirements:
 - ◆ A minimum of 50% color
 - ◆ 40% of other living plant material
 - ◆ 10% for other materials and accessories
 - ◆ Refurbishing and watering during the Fair shall take place between 10 am and 12 Noon.
 - ◆ If you use any display material that shows a label, the label must be a Yolo, Sutter, Colusa, Solano, Sacramento product.

DIVISION 902 – WHEELBARROW/WAGON COMPETITION

Class

- 1 Flowering Wheelbarrow Competition
- 2 Flowering Wagon Competition



Garbage Can Art

Awards Offered:

- **BEST OF SHOW:** \$15.00
- **RESERVE BEST OF SHOW:** \$10.00
- **BEST OF DIVISION:** Rosette

Entry Information:

- Entry Fee: \$5.00
- Entry Limit: **1** Entry per exhibitor. Limited to first the **first 5 entries** per class.
- Entries are to be delivered to the **Fair Office**.
- Danish System of Judging
- Entry drop off **August 6, 2025, from 1 pm to 8 pm PST**

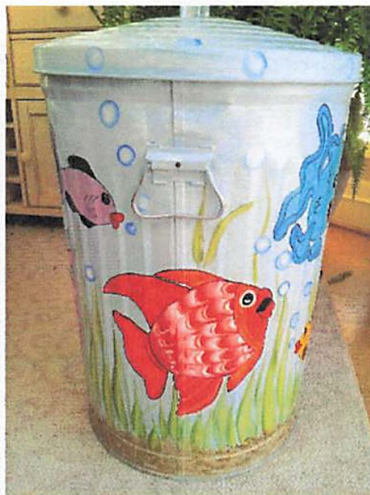
Rules:

- Eligibility: Open to Yolo County residents and neighboring counties, ages 18 or older.
- 35- or 50-gallon garbage cans may be picked up from the fairgrounds for painting. Designs may be funny, agricultural, fair-themed or pretty. Use your imagination!
- Entries must be prepared by the exhibitor.
- The entries will not be returned, they will be used throughout the fairgrounds.
- All entries will be judged but will be displayed at the discretion of Management.

DIVISION 903 - GARBAGE CAN ART

Class

- 1 Garbage Can Art



Barn Door Murals

Awards Offered:

- **BEST OF SHOW:** \$25.00
- **RESERVE BEST OF SHOW:** \$15.00
- **BEST OF DIVISION:** Rosette

Entry Information:

- Entry Fee: \$5.00
- Entry Limit: **1** Entry per exhibitor. Limited to first the **first 10 entries** per class.
- Entries are to be delivered to the **Fair Office**.
- Danish System of Judging.
- Entry drop off: **August 6, 2025, from 1 pm to 8 pm PST.**

Rules:

- Eligibility: Open to Yolo County residents and neighboring counties, ages 18 or older.
- Exhibitors can pick up the Historical Half Stall Door from the old Horse Barn from the fairgrounds, to paint a mural of the 2025 Fair Theme, Livestock, Agriculture, or Carnival themed mural on it. Murals will be affixed in various places around the fairgrounds to be enjoyed by all.
- Judging will be 33% originality, 33% workmanship and neatness, 34% overall appeal to fairgoers.
- Entries must be prepared by the exhibitor.
- All entries will be judged and displayed at the discretion of Management.

DIVISION 904 – Barn Door Murals

Class

- 1 Barn Door Murals

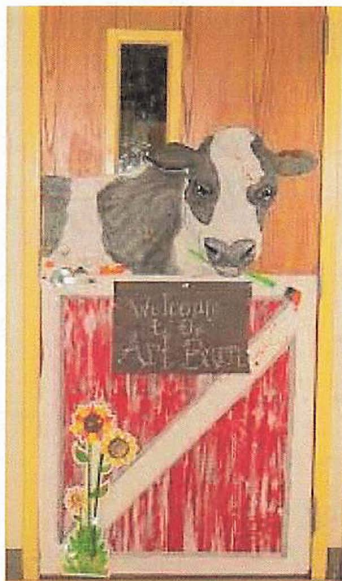


Photo Cut-Out Props

Awards Offered:

- **BEST OF SHOW:** \$25.00
- **RESERVE BEST OF SHOW:** \$15.00
- **BEST OF DIVISION:** Rosette

Entry Information:

- Entry Fee: \$5.00
- Entry Limit: **1** Entry per exhibitor. Limited to first the **first 10 entries** per class.
- Entries are to be delivered to the **Fair Office**
- Danish System of Judging.
- Entry drop off: **August 6, 2025, from 1 pm to 8 pm PST**

Rules:

- Eligibility: Open to Yolo County residents and neighboring counties, ages 18 or older.
- Exhibitors may use plywood or heavy weight cardboard for the photo cutout prop. The Photo Cut-Out Props will remain in the fair's possession after the entry is judged and be used and displayed throughout the fairgrounds.
- Designs may be funny, agricultural, fair-themed or farm animals. Use your imagination!
- Judging will be 33% originality, 33% workmanship and neatness, 34% overall appeal to fairgoers.
- Entries must be prepared by the exhibitor.
- All entries will be judged and displayed at the discretion of Management.

DIVISION 905 - PHOTO CUT-OUT PROPS

Class

- 1 Photo-Cut-Out Prop

