

2024 Long-Term Irrigated Lands Program

Annual Meetings

January 22, 2024 Clarksburg

January 23, 2024 Winters

January 24, 2024 Yolo County Fairgrounds

January 24, 2024 YCFB, evening



Irrigated Lands Program Coordinator **Semran Bajaj**

Semran was hired in mid-December as the Irrigated Lands Coordinator and is quickly learning the program.

Please welcome her to our organization.

You can reach her at:

semran@yolofarmbureau.org

(530) 662-6316



Who Has To Comply?

Landowners with Irrigated Lands

Growers must also enroll

Rice

- Has a separate program (California Rice Commission)
- We track rice acres in our system so please report them to us. There is no charge.

Cannabis

Parcels planted to cannabis are required to enroll directly with the Regional Board in the Cannabis Program



Reporting

Participant Report - Due July 1

We are required to report the names of landowners and growers enrolled in the program and include whether or not they are in “Good Standing”.

In 2023 The Regional Board asked for names of landowners who did not complete their 2022 Reporting Requirements (i.e. Irrigation and Nitrogen Management Plan).

Regional Board contacted the landowners to let them know there are fines for not completing the reports and urged them to contact our office to provide the information.

Subwatershed Reporting

Dashboard Crop Year 2023 ▾

<p>Field Information ?</p> <p>Completed</p> <p>Please completed by Friday, December 1, 2023.</p> <p>View/Edit Approve</p>	<p>Management Practices ?</p> <p>Completed</p> <p>Please completed by Friday, December 1, 2023.</p> <p>View/Edit Approve</p>	<p>Farm Information ?</p> <p>Completed</p> <p>Please completed by Friday, December 1, 2023.</p> <p>View/Edit Approve</p>
<p>Well Identification ?</p> <p>Completed</p> <p>Please completed by Friday, December 1, 2023.</p> <p>View/Edit Approve</p>	<p>Evaluation Surveys ?</p> <p>Completed</p> <p>Please completed by Friday, December 1, 2023.</p> <p>Print</p>	<p>INMP Estimates ?</p> <p>Completed</p> <p>Please completed by Friday, December 1, 2023.</p> <p>View/Edit Approve</p>
<p>INMP Actuals ?</p> <p>Completed</p> <p>Please completed by Friday, December 1, 2023.</p> <p>View/Edit Approve</p>	<p>Annual Meetings ?</p> <p>Completed</p> <p>Please completed by Friday, December 1, 2023.</p> <p>View/Edit Approve</p>	<p>MPIR Questionnaire ?</p> <p>Completed</p> <p>Please completed by Friday, December 1, 2023.</p> <p>View/Edit Approve</p>

[Print Nitrogen Summary](#)

[Print Field Nitrogen Plans](#)



Responding to Notices

If you receive a notice from the Regional Board please know that you are **REQUIRED** to respond.

Failure to respond can result in **hefty fines.**

Please call our office if you receive **any** correspondence from the Regional Board.



Fees

Invoices are first mailed to landowners.

It often results in owners remembering to report changes, such as:

- Parcel splits
- Change in ownership
- Change in grower
- Land sold, etc.

If the landowner thinks the acreage shown on the invoice is incorrect, they need to **contact their grower**. We make changes reported by the grower.

If the grower has agreed to pay the fees, **please forward the invoice to your grower for payment**.



Fees

2022 and 2023 fees were \$4.40/irrigated acre

2024 fees increased to \$5.00/irrigated acre

State Water Board fees increased to \$1.42/irrigated acre.

In addition, Yolo County estimated costs increased \$75,000 to cover costs for complying with the CV-SALTS Nitrate Control Program

(more will be discussed later in the program)



Members

The grower is the “MEMBER”

The landowner is the “MEMBER” only if he/she owns and farms the property

Members complete required crop reports and farming practices

Only members have access to www.subwatershed.com

Landowners do not.



Crop Reports

Members are responsible for entering information into the online program

Growers print and sign the reports, attach required maps of irrigation wells and file in their office

These reports are reviewed if the property is chosen for a site inspection





On-Site Inspections

The Regional Board started on-site inspections of enrolled parcels to prove the current program is working and is successful. Inspections are planned for 2024

2017 - Four growers fields were inspected

2018 - No inspections

2019 - Five growers fields were inspected

2020 - Inspections were waived due to COVID

2021 - Inspections were waived due to COVID

2022 - No inspections have been done in Yolo County since 2019



On-Site Inspections

Regional Board staff will review records and complete a visual inspection of the parcel

- * To see if farming practices are the same as reported
- * To inspect wells, pumps and water movement across the property
- * If violations are found, they must be corrected

You will receive a letter from the Regional Board with details about the inspection for your file

Generally, the Regional Board lets us know in advance about planned inspections. We will contact you to see if you would like us to review your records



Surface Water Quality Monitoring

The program started in the early 2000s. Surface water is monitored at one “Representative Site” at Willow Slough

The “Representative Site” is the monitoring site for all of Yolo County. This was done to reduce monitoring costs. However, if there is an exceedance it will be considered to be throughout the County

Monitoring is done:

6 times during the irrigation season

2 times during the storm season



Surface Water Quality Monitoring

Capay Dam and the Tule Canal were original monitoring sites. Because of exceedances at these sites occasional monitoring continues to be required at both sites

Parameters in the following categories are monitored:

Microbiological Nutrients

Physical

Pesticides

Trace metals

Toxicity



On-Farm Drinking Water Well Testing

- If nitrate + nitrite as nitrogen levels are **equal to or less than 10 mg/L**, sample again the next year.
- If nitrate + nitrite as nitrogen levels are **greater than 10 mg/L**, use the Notification Template to notify drinking water users **within 10 days** of learning of the exceedance and also send a signed copy to the Central Valley Water Board. No further testing required.

The Notification Template is included with your outreach materials or located on our webpage:

https://www.waterboards.ca.gov/centralvalley/water_issues/irrigated_lands/drinking_water



On-Farm Drinking Water Well Testing

If your test results are below 8 mg/L for 3 years in a row, testing is required every 5 years.

If results are greater than 8 mg/L but less than 10 mg/L testing is required annually.

If test results are above the target number the grower has the option to start providing bottled water immediately.

Must keep receipts for purchases of water as proof.



On-Farm Drinking Water Well Testing

In last fall's newsletter, I reported you do not have to test your domestic well for nitrates if you own the property. **This is incorrect.**

All domestic wells located on land enrolled in the Irrigated Lands Program are required to test the water for nitrates

It is the landowner's responsibility to make sure the testing is done

It is recommended that if you give the information to the landowner to document the date and who you gave it to

Results are sent to the Geo Tracker, the State groundwater database. A copy is sent to the landowner



On-Farm Drinking Water Well Testing

You may have misunderstood that if a sample result exceeds the drinking water standard (10 mg/L nitrate + nitrite as nitrogen) AND the owner /family are the only users, then no notification is required to the users.

This is indicated by checking Yes on box 1J. on the Drinking Water Member Information Form.

This completes the notification process, so the owner does not have to send us a signed copy of the Notification Template.



PROGRAMS

The reports listed below are specialized reports generated from the information you provide in your year end Irrigation Nitrogen Management Plan

Groundwater is a source of drinking water and the INMP helps determine if nitrate/nitrite is leaching past root zone at a rate that impacts groundwater quality

The INMP is used for Groundwater Quality Protection Targets, Management Practices Effectiveness Program, Outlier (over application) and Acceptable Ranges work



PROGRAMS

Groundwater Quality Trend Monitoring verifies where ambient (existing) groundwater conditions are high in nitrate.

The Groundwater Quality Assessment Report shows where hydrologic and soil conditions **have higher possibility of nitrates leaching to groundwater.**

It does not mean that nitrate is leaching AND impacting groundwater. Irrigated pasture, alfalfa, wine grapes that apply little to no nitrogen could be farmed in High Vulnerability Areas.



PROGRAMS

Groundwater Quality Trend Monitoring

Annually for the past 5 years a Groundwater Trend Monitoring program has been conducted . This year the Coalition will request reducing the frequency to every 5 years – groundwater quality doesn't change rapidly AND the On-Farm Drinking Water Sampling program has shown where groundwater is impacted by Nitrogen – and/or the geographic footprint of where trend monitoring takes place.

Luhdorff Scalmani completed the 5 Year Trend Analysis in 2023. It has been submitted to the Regional Board for review and comment



Programs

Groundwater Management Practices Implement Report (Strategy and Template)

Submitted and approved 2021





PROGRAMS

Targets were generated for townships with more than 10% High Vulnerability Areas to determine if surface N-loading rates that are meant to serve as a basis for growers to use achieve Receiving Water Limitations and are expressed as acre-weighted pounds of nitrogen per township

GWP Targets are built upon the GWP Values, and the assessment framework considers hydrologic conditions and recharge, other potential N-0 contributors and post-root zone attenuation (i.e. denitrification)



PROGRAMS

In April 2023 Regional Board held information presentation on Targets

In June 2023 Regional Board issued Conditional Approval of Targets. The conditions are:

By April 1, 2024 a proposed methodology to conduct a detailed uncertainty analysis and work to further validate model outputs and key components; the results of which will be used to inform further improvements to future iterations of the GWP targets (i.e. 5-Year Reviews).

By July 1, 2024 the Coalitions must submit GAMP updated that incorporate the approved GWP Targets

Environmental Justice Organizations opposed the Targets and are likely to petition the Conditional Approval to the State Water Board



PROGRAMS

In 2021 the Central Valley Regional Water Quality Control Board exempted managed wetlands from the requirements of the Irrigated Lands Program after seven years of review

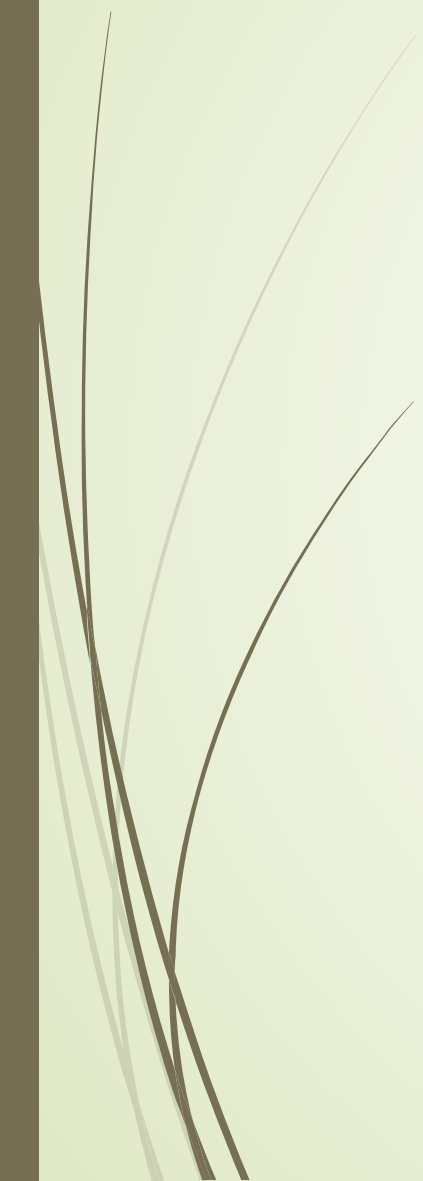
The Regional Board approved the 2021-22 GAR in November 2022. The next GAR update in 2026 will be informed by the GW Trending Monitoring and GW Quality Targets



PROGRAMS

Groundwater Management Practices Implementation Report

The Coalition will revise the Groundwater Quality Management plan by July 1, 2024 based on information from GW Quality Targets information





A/R and A/Y

Information from Irrigation Nitrogen Management Plans is used to compare nitrogen used by different growers for the same crop within a township.

Information for 2020, 2021 and 2022 crop reports will be used to generate an average for comparison by crop within a township.

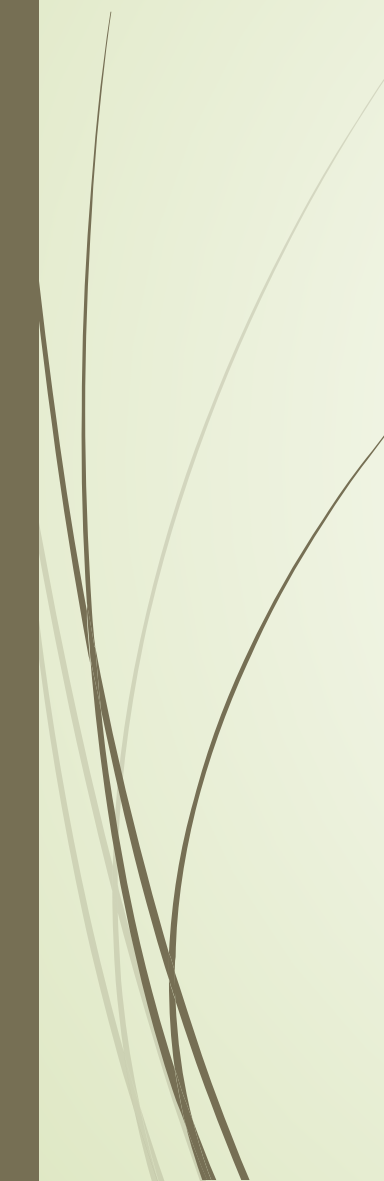
Growers who are identified to have above-average nitrogen use are considered outliers.

Growers will be contacted to share information from Management Practices Effectiveness Program (MPEP) to determine if and how they might be able to adjust nitrogen applications. Acceptable ranges based on crop type are being developed



A/R and A/Y

The reason could be as simple as:

- One grower doesn't use fertilizer
 - One grower's field was just planted to a permanent crop which uses less fertilizer.
 - One grower only uses a little fertilizer (for whatever reason)
- 

A/R and A/Y Reports

A/R Value =

- ▶ Total Applied Nitrogen divided by Nitrogen Removed.
- ▶ The Nitrogen Removed Value was calculated using published N removal values (Geisseler, 2016).
- ▶ Values have not been published for all crops.
- ▶ Values are expected to be updated and modified as new information becomes available.

A/Y =

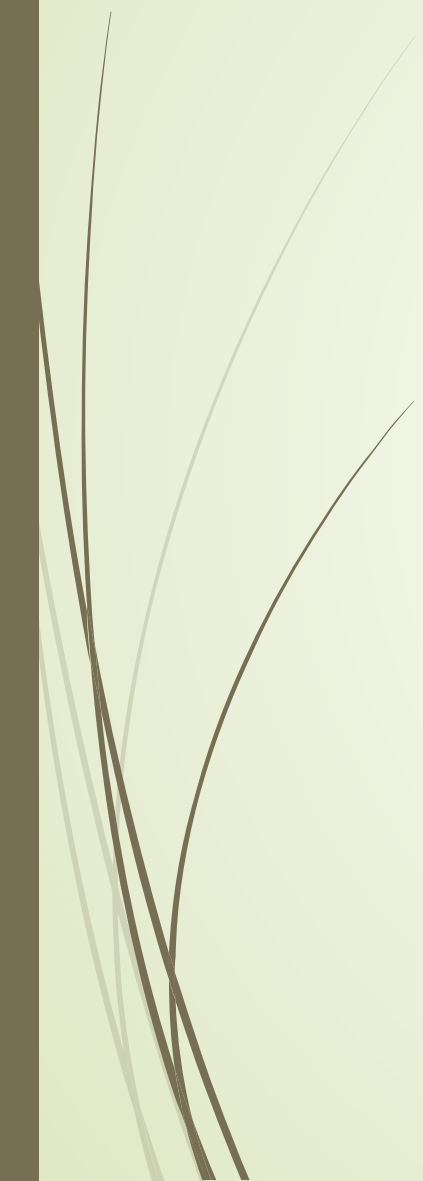
- ▶ Total applied Nitrogen over Yield Value.



A/R and A/Y

**Only report the amount of
Nitrogen used...**

**not the total pounds of
fertilizer applied**





Programs

CV-SALTS Program For Sacramento Valley

Yolo County is the only subwatershed in the Sacramento Valley Water Quality Basin designated as a Priority 2 area. The rest of the Sacramento Valley subwatersheds do not have to comply.

All Yolo County Waste Discharge Permit holders were notified in late December of the requirement to enroll in either a Path A or Path B plan to comply with the CV Salts program.

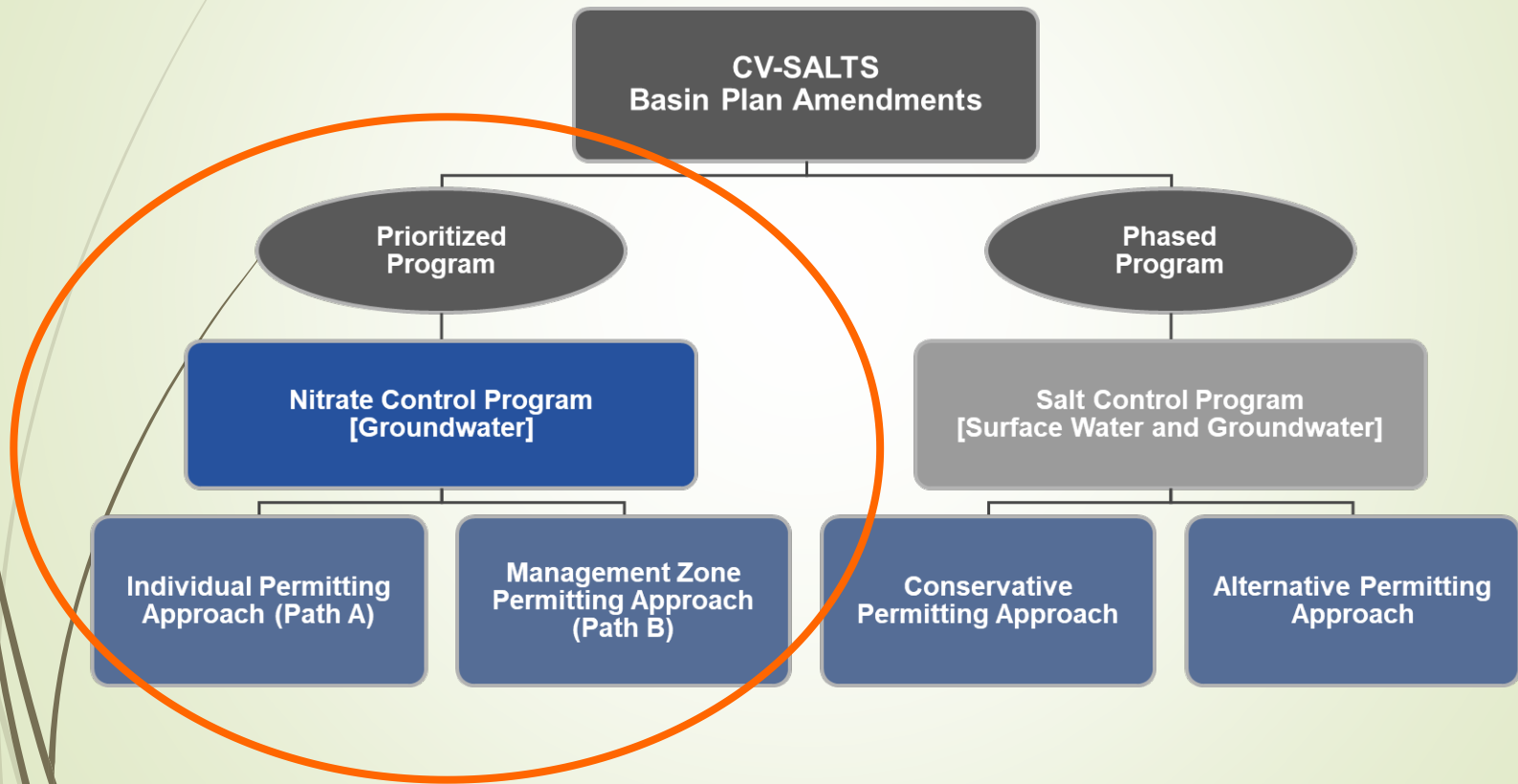
*The California Rice Commission already completed their application under Path A.

Nitrate Control Program Implementation in Yolo Basin



14 November 2023
Central Valley Regional Water Quality Control Board

Salt and Nitrate Control Program – Overview



CV-SALTS Goals



Provide safe drinking water supplies



Reduce salt and nitrate loading so that ongoing discharges neither threaten to degrade high quality waters nor cause or contribute to exceedances of water quality objectives



Implement long-term, managed restoration of impaired water bodies

Prioritized Nitrate Control Program

Priority 1 Area (Red)

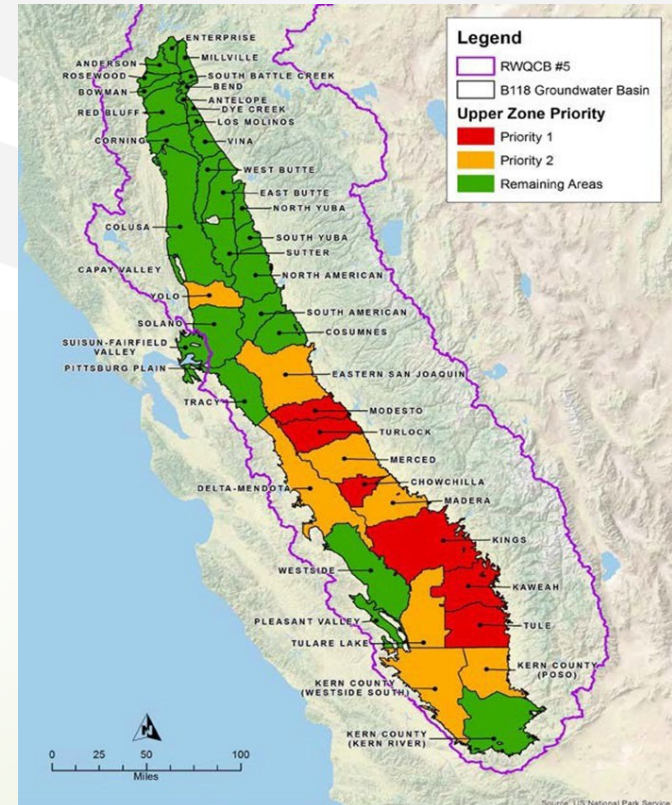
Notice to Comply sent May 2020

Priority 2 Area (Orange)

Implementation anticipated to begin December 2023

Non-Prioritized Areas (Green)

Implementation to be phased in after priority areas



Permitting Pathways

← Pathway A – Individual Permit

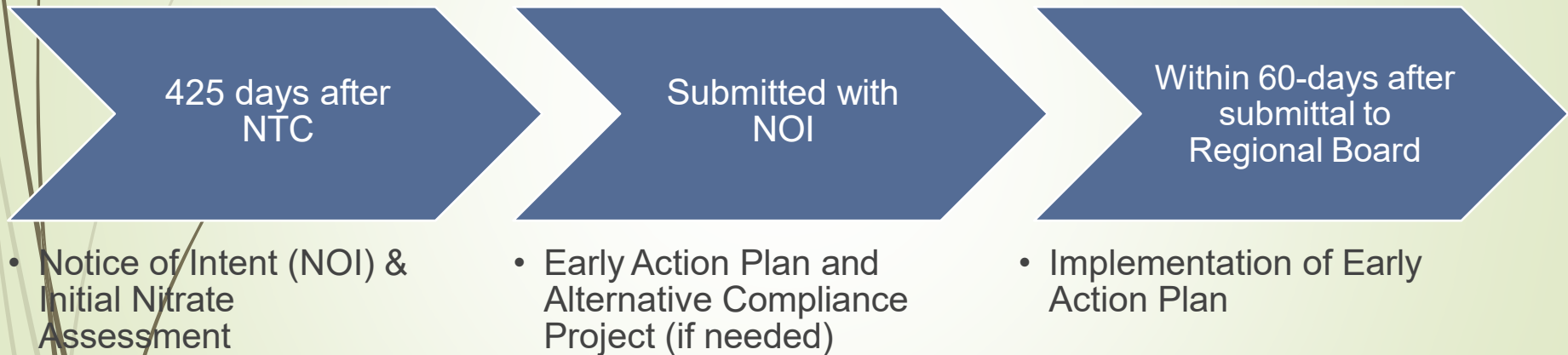
- ← Option for permittees that have discharges that meet nitrate standards or who have resources to address localized nitrate issues on their own.
- ← Compliance may be difficult and expensive if:
 - ← Drinking water wells near facility are high in nitrate
 - ← Discharge is high in nitrate
 - ← Local shallow groundwater exceeds 75% of nitrate drinking water standard

← Pathway B – Management Zone

- ← Collaborative approach for compliance. Cooperative effort among dischargers to marshal resources to address nitrate impacts
- ← 35-year exception from nitrate water quality objective
- ← Must ensure safe drinking water is provided

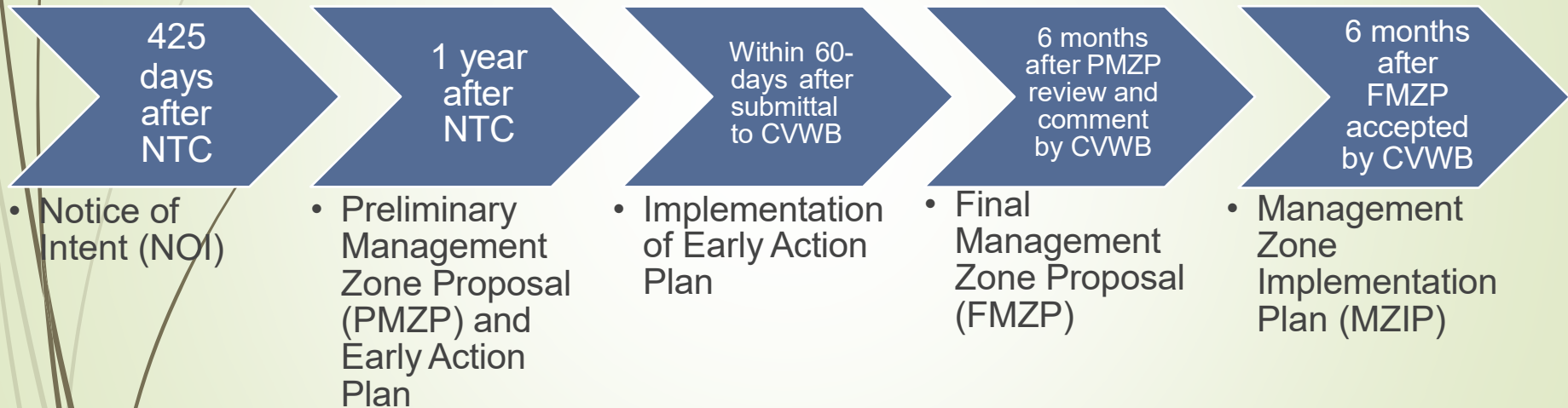
Path A: Individual Permittee Deliverables

Deliverables after Notice to Comply (NTC):

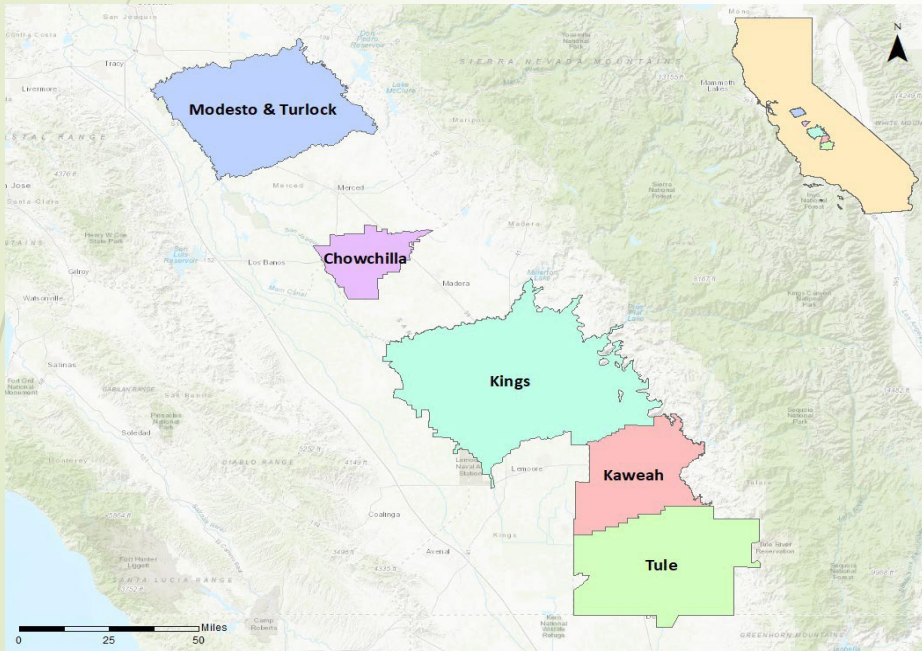


Path B: Management Zone Deliverables

Deliverables after Notice to Comply (NTC):



Priority 1 Groundwater Basins



Management Zones:

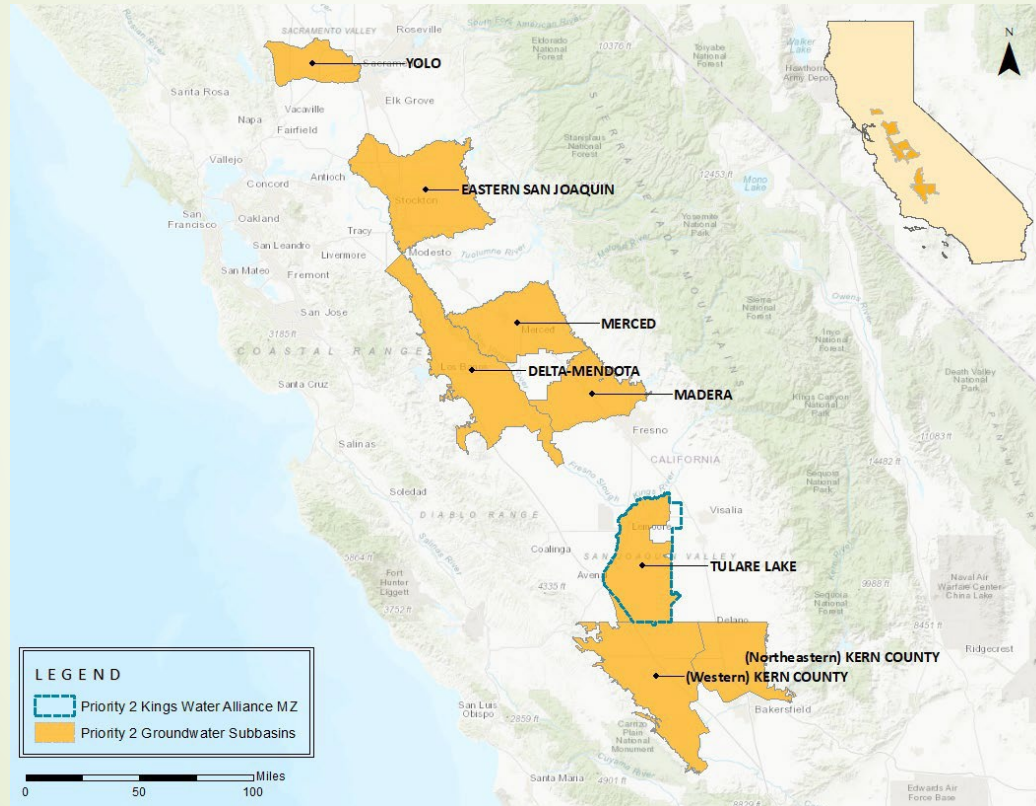
- Valley Water Collaborative
- Chowchilla Management Zone
- Kings Water Alliance
- Kaweah Water Foundation
- Tule Basin Management Zone

Priority 1 Management Zone Deliverables

Deliverables following Notice to Comply (May 29, 2020):



Priority 2 Groundwater Basins





Questions??

Contact: Semran Bajaj

Phone: (530) 662-6316

Email: semran@yolofarmbureau.org