

Irrigated Lands Regulatory Program (ILRP)

Drinking Water Well Monitoring:

Collecting Baseline Samples in the Sacramento Valley

Annie Burkholder

anne@dellavallelab.com

530-400-1346

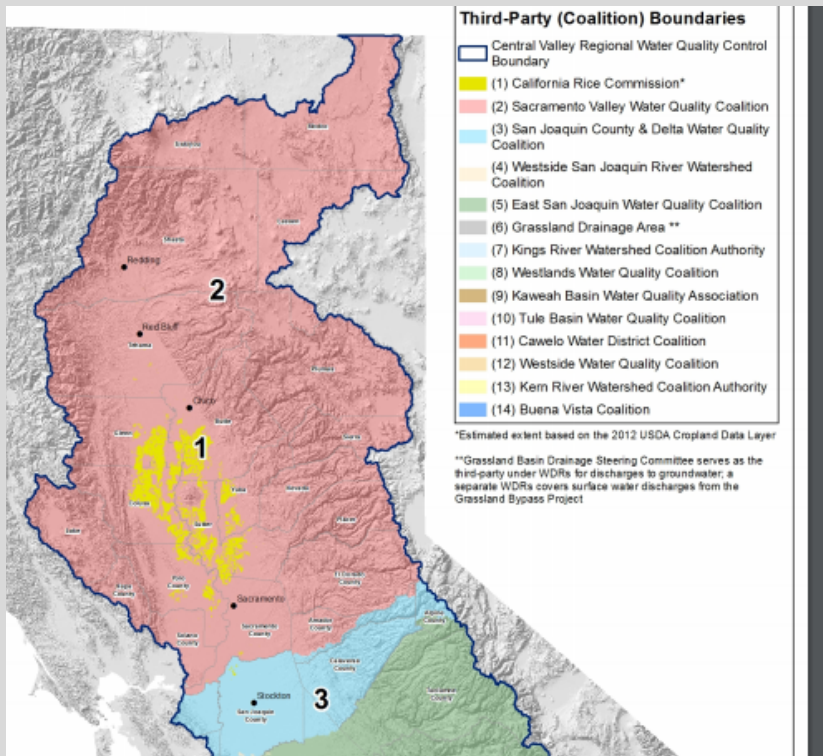


For more information please visit: www.dellavallelab.com/drinkingwaterILRP



Why sample?

- **To ensure that drinking water is safe**
 - Drinking water with nitrate + nitrite levels above the drinking water standard of 10 mg/L (1 mg/L = 1 ppm) may not be safe to drink
 - Drinking water with high levels of nitrate + nitrite is particularly harmful to infants and pregnant women
 - Nitrate + nitrite above 10 mg/L can inhibit the ability of red blood cells to transport oxygen
- **Because it's required**
 - Started in the East San Joaquin River Watershed in 2019, Tulare Lake Basin in 2020
 - Will be implemented in the Sacramento Valley Water Quality Coalition in 2022



What is required?

Sample all active drinking water wells on parcels that are enrolled in the Irrigated Lands Regulatory Program (ILRP) starting in 2022*

“Active” drinking water wells as indicated on the Farm Evaluations

- If nitrate + nitrite is:
 - Below 8 mg/L: Sample for three consecutive years. If nitrate + nitrite is below 8mg/L for all three years, sample once every 5 years.
 - Between 8 mg/L and 10 mg/L: Sample ever year.
 - Above 10 mg/L: Notify the user and no additional sampling is required.

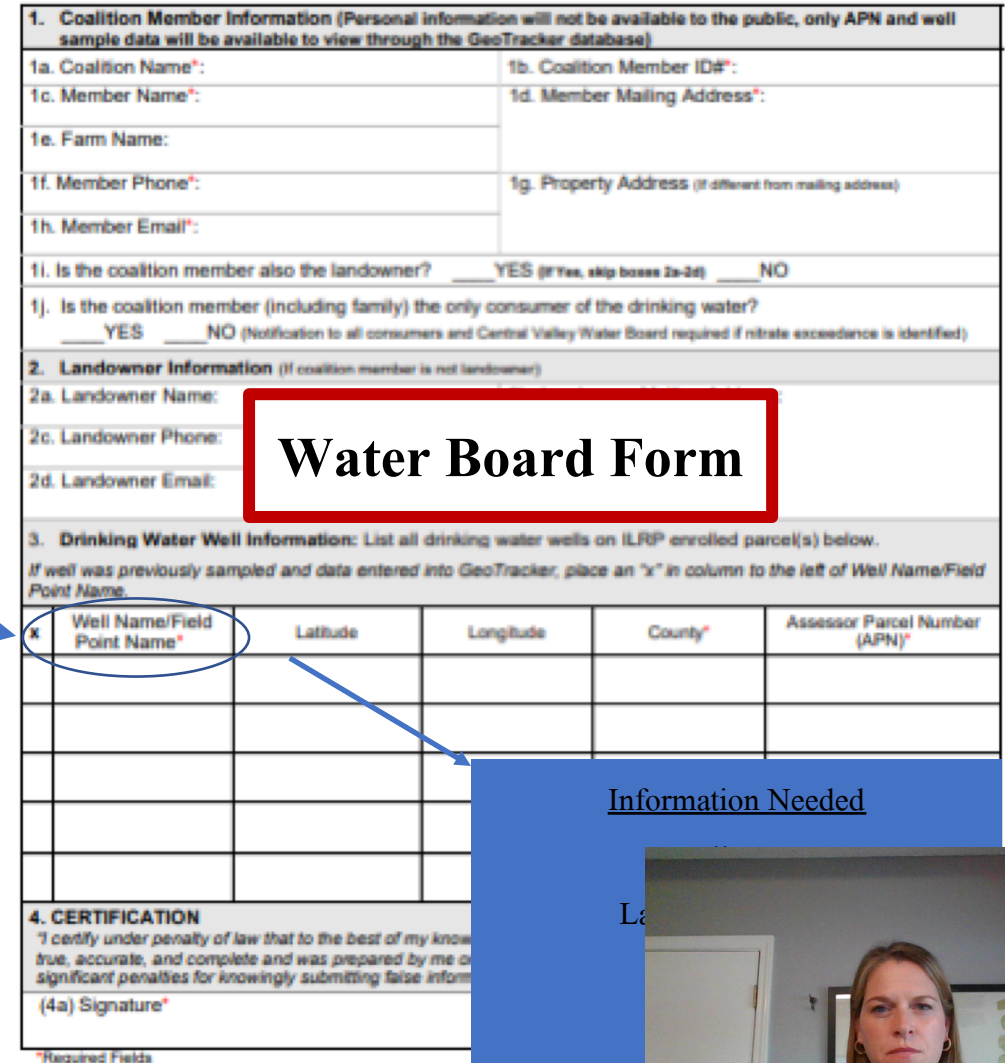
*Results from the previous 5 years ((2017 to 2021) may be used if the analysis was completed by a certified lab such as Dellavalle Laboratory and the proper sample collection procedures below were



How to Sample

- If the well is not frequently used, run water for 15 minutes prior to sampling.
- Sample as close to the wellhead as possible, and prior to any treatment or filtration.
- Collect the sample into a labeled, unpreserved 250 mL plastic bottle.
- Label the sampling bottle with an indelible marker. Include the well ID, the samplers name, and the date and time the sample was collected.
- Keep samples on ice in a cooler. Samples must arrive to the laboratory at a temperature of 39.2° F or less.
- *Complete the Water Board Drinking Water Well Member Information form (**not needed if collecting samples prior to 2022**).*
- Complete the Dellavalle Laboratory work request.
- Request NO₃-N and NO₂-N analysis.
- Fill out the chain of custody on the work request form.
- Submit the samples the same day they are collected.



[illegible]

Water Board Form

Information Needed

If submitting samples prior to 2022 only the lab form will be needed

SAME

Using Baseline Results for the Drinking Water Requirement

Samples collected prior to 2022 can be used to satisfy the drinking water requirement if the following conditions are met:

- Lab work is completed by an ELAP (Environmental Laboratory Accreditation Program) certified laboratory such as Dellavalle Laboratory.
- Samples are collected properly and meet hold times.
- Nitrate ($\text{NO}_3\text{-N}$) and nitrite are analyzed ($\text{NO}_2\text{-N}$) .

In 2022 you may request to have your results uploaded to the State's GeoTraker database by attaching the Water Board Drinking Water Well Member Information form to the laboratory results. This action will satisfy the drinking water testing requirement for 2022.

- Upload to GeoTracker is an additional cost.



Irrigated Lands Regulatory Program (ILRP)

Drinking Water Well Monitoring:

Collecting Baseline Samples in the Sacramento Valley

Annie Burkholder

anne@dellavallelab.com

530-400-1346

For more information please visit:

www.dellavallelab.com/drinkingwaterILRP

