

LAMB

ACTIVITY BOOK

Junior
Intermediate
Senior



Activities

It is recommended that you complete the six activities provided in this Skill-a-thon book to help prepare you for the skill-a-thon. The activities are very similar to what to expect during the skill-a-thon and can be used for practice.

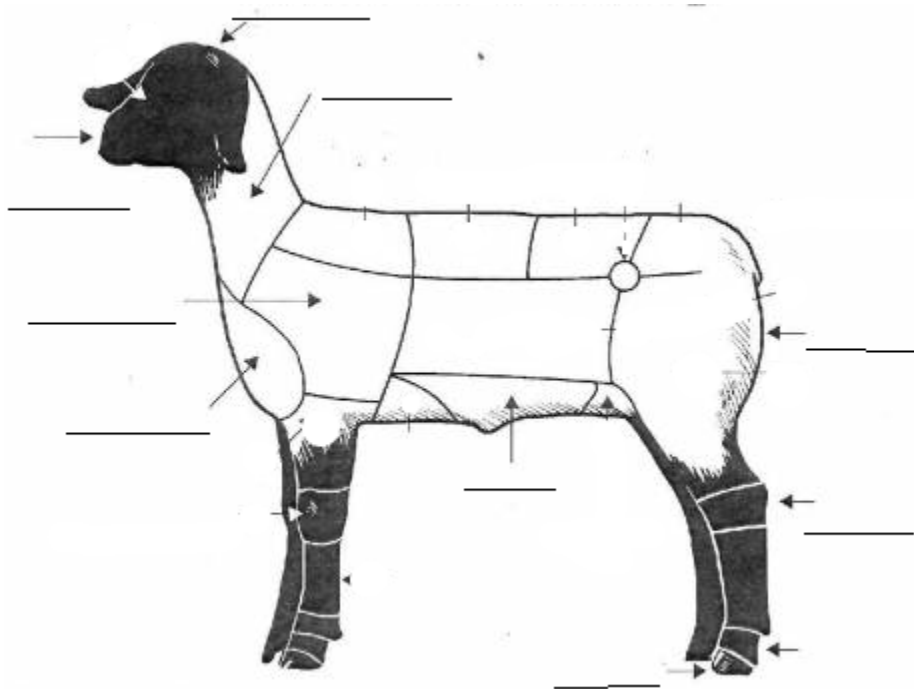
4-H Members Only: After you have completed an activity you should record it in your record book using the table on the 4-H Project Book/Activities page. You do not need to attach the activity page you have completed in the record book. Before turning into 4-H in May, have your leader sign the Activity Page showing they have seen your six (6) completed Activities.

JUNIOR LAMB BODY PARTS

ACTIVITY #1

Poll
Muzzle
Shoulder
Brisket
Dock

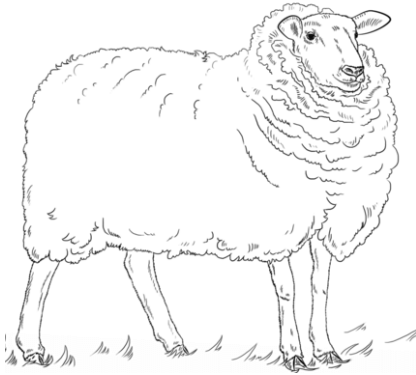
Hock
Neck
Belly
Leg
Knee



JUNIOR LAMB ACTIVITY #2

BREEDS

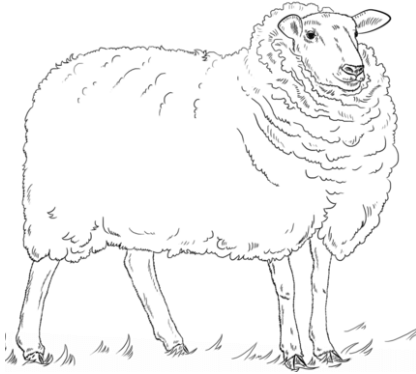
Use the breed pictures in the skill-a-thon book to color in each animal.
List two interesting facts about each breed.



Breed: Shropshire

*

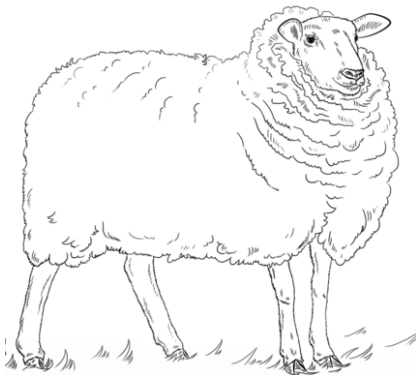
*



Breed: Dorset

*

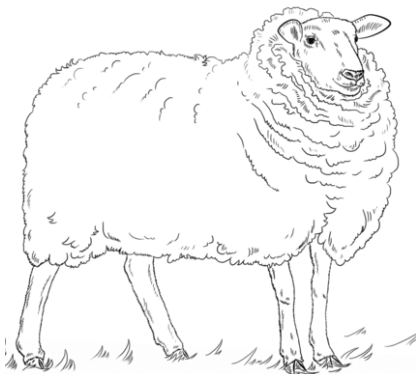
*



Breed: Southdown

*

*



Breed: Suffolk

*

*

JUNIOR LAMB ACTIVITY #3

LEG STRUCTURE

Fill in the blank with the correct LEG STRUCTURE

CORRECT

BUCK-KNEED

WEAK PASTERNS

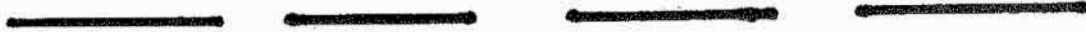
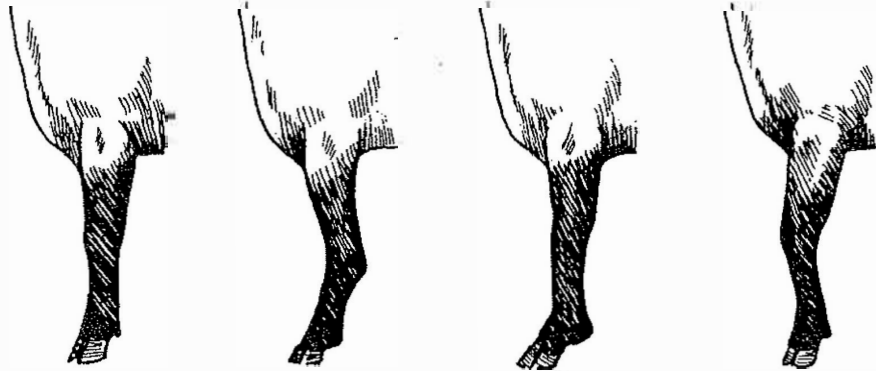
SICKLE-HOCKED

POST-LEGGED

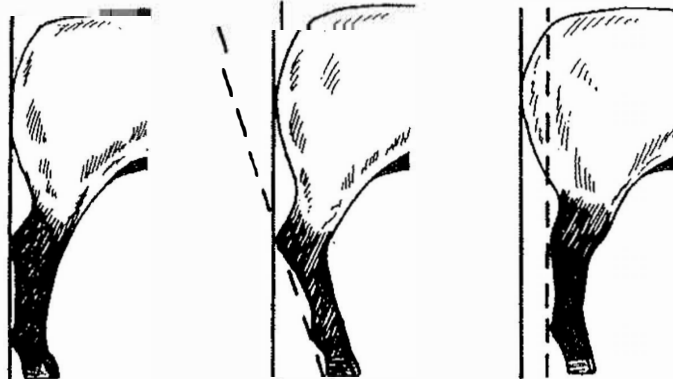
CALF-KNEED

CORRECT

Side View Front Legs



Side View Rear Legs



JUNIOR LAMB ACTIVITY #3 (Con't)

LEG STRUCTURE

Fill in the blank with the correct LEG STRUCTURE

CORRECT

KNOCK-KNEED

BOWLEGGED

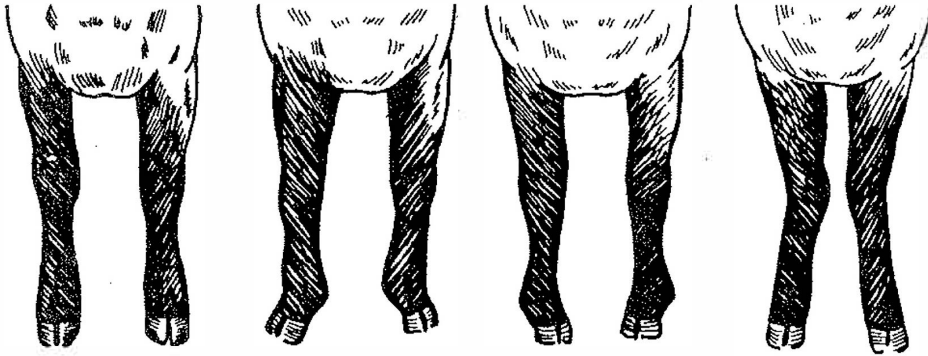
COW-HOCKED

SPLAY-FOOTED

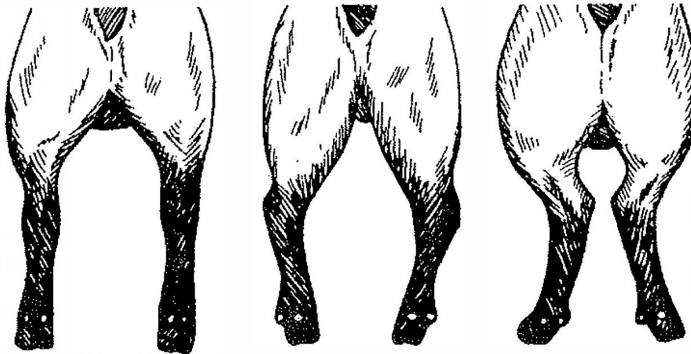
PIGEON-TOED

CORRECT

Front View



Rear View



JUNIOR LAMB ANIMAL IDENTIFICATION

ACTIVITY #4

(Please draw a line to match the correct method of animal identification.)

A. Paint Branding



B. Ear Tattooing



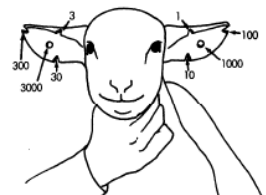
C. Ear Tagging (plastic)



D. Ear Tagging (metal)



E. Ear Notches



JUNIOR MARKET LAMB ANIMAL HEALTH

ACTIVITY # 5

Please circle correct answers below and fill in the blank

1. True or False: First you need to recognize normal characteristics of your animal before you can recognize what is abnormal.
2. True or False: Keeping records can help recognize a health problem in your flock.
3. True or False: It is important to make sure my lamb is eating normally.
4. True or False: You should always purchase healthy animals.
5. Please list 6 characteristics of a healthy lamb.

1. _____
2. _____
3. _____
4. _____
5. _____
6. _____

JUNIOR MARKET LAMB RESTRAINTS

ACTIVITY # 6

Match the word to the definition by drawing a line.

- | | |
|------------|--|
| 1. Knots | a. are used to attach rope to a post or rail |
| 2. Hitches | b. are used to permanently join ropes to one another |
| 3. Splices | c. join ropes together, attach ropes to a post or rail, or attach ropes to an animal |

INTERMEDIATE LAMB BREED IDENTIFICATION ACTIVITY #1

1. White-faced breed developed in New Zealand from Lincoln and Leicester x Merino crosses. These medium-sized sheep are prolific, good mothers that produce good market lambs and yield heavy, medium-wool fleeces with good staple length.
2. This breed, highly adaptable to a variety of climates, was developed in Scotland. These small-sized, white-faced sheep with bare heads and legs are moderately prolific, easy lambers, good milkers, and possess excellent lamb vigor.
3. This polled breed with black head and legs has the most number of purebred registrations in the U.S. It is known for its meatiness and high carcass quality. Lambs grow rapidly and produce high cutability carcasses.
4. Originating in Southern England, these sheep can be polled, scurred, or horned and are known for breeding out of season, being heavy milkers and producing more than one lamb crop per year. Hardy lambs yield heavy-muscled carcasses.
5. The oldest breed from England, this sheep is small to medium in size and known for producing meaty carcasses. It is polled, with a gray to mouse brown face and wool on its legs. Fleece from this breed are of medium-wool.
6. Developed in the United States from a Lincoln ram x Rambouillet ewe cross and known for its size, wool-producing ability, and productivity under range conditions. This breed is large, white-faced, polled and has wool on the legs.
7. Originating in England, this medium-sized, dark-faced, polled breed has wool on its head and face. It is prolific, matures early, milks well, and is heavily muscled. Lambs are hardy, fast-growing and produce lean, well-muscled carcasses.
8. Developed in France, this long-lived rugged breed will breed out of season and has wool that is fine in fiber diameter. These sheep are large, white-faced, with wool on the head and legs, and can be polled or horned.
9. Developed in Finland, this small to medium-sized, fine boned breed is open faced and produces medium grade, good staple length wool. Reaching sexual maturity early, ewes have strong maternal instincts and are very prolific—producing two or four lambs each lambing.

MATCH:

_____ Suffolk	_____ Southdown	_____ Cheviot	_____ Rambouillet
_____ Shorpsire	_____ Finnsheep	_____ Columbia	_____ Dorset
_____ Corriedale			

INTERMEDIATE LAMB ACTIVITY #2

Fill in the blank with the correct LEG STRUCTURE

CORRECT

BUCK-KNEED

WEAK PASTERNS

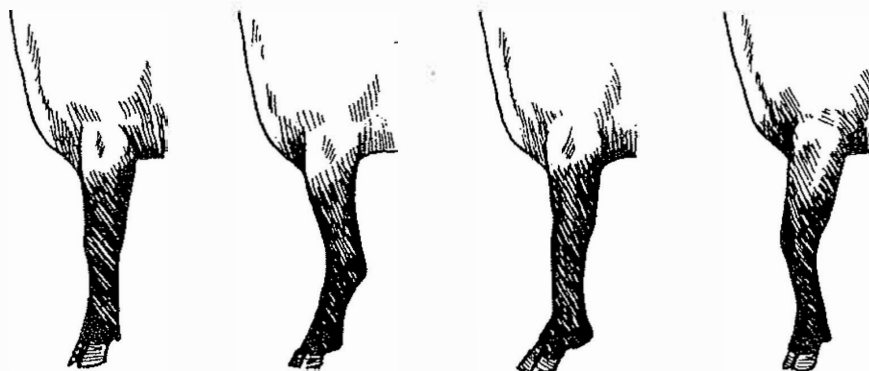
SICKLE-HOCKED

POST-LEGGED

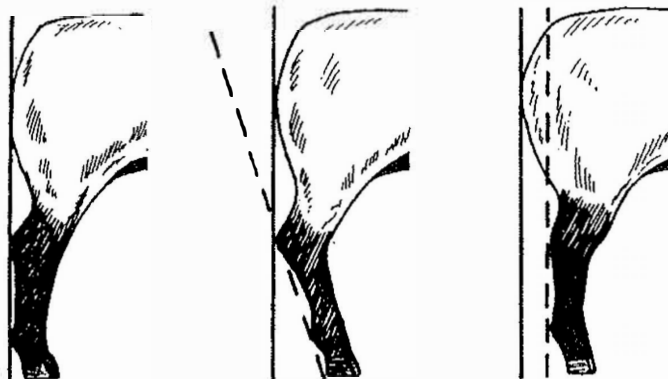
CALF-KNEED

CORRECT

Side View Front Legs



Side View Rear Legs



INTERMEDIATE LAMB ACTIVITY #2

Fill in the blank with the correct LEG STRUCTURE

CORRECT

KNOCK-KNEED

BOWLEGGED

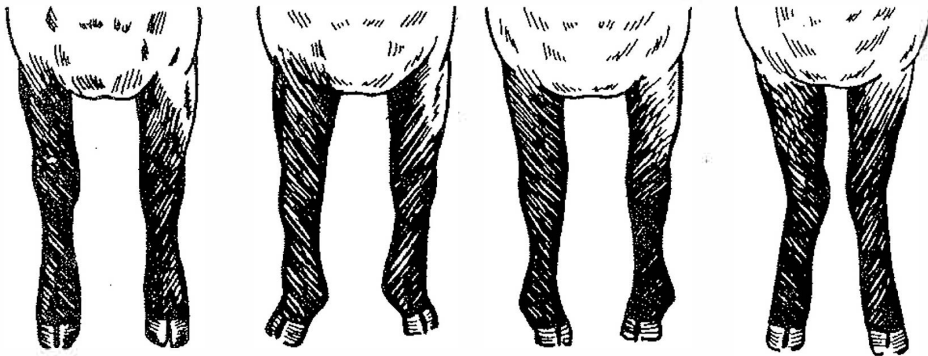
COW-HOCKED

SPLAY-FOOTED

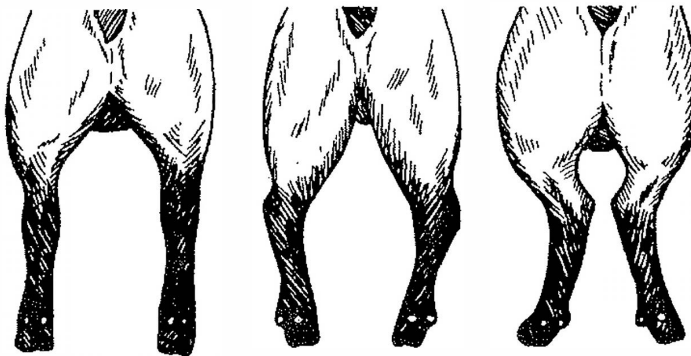
PIGEON-TOED

CORRECT

Front View



Rear View



INTERMEDIATE LAMB INTERNAL/EXTERNAL PARASITES ACTIVITY #3

1. What are internal parasites?

2. Circle the common internal parasites for sheep:

Ringworms

Barber pole worms

Roundworms

Lungworms

Whipworms

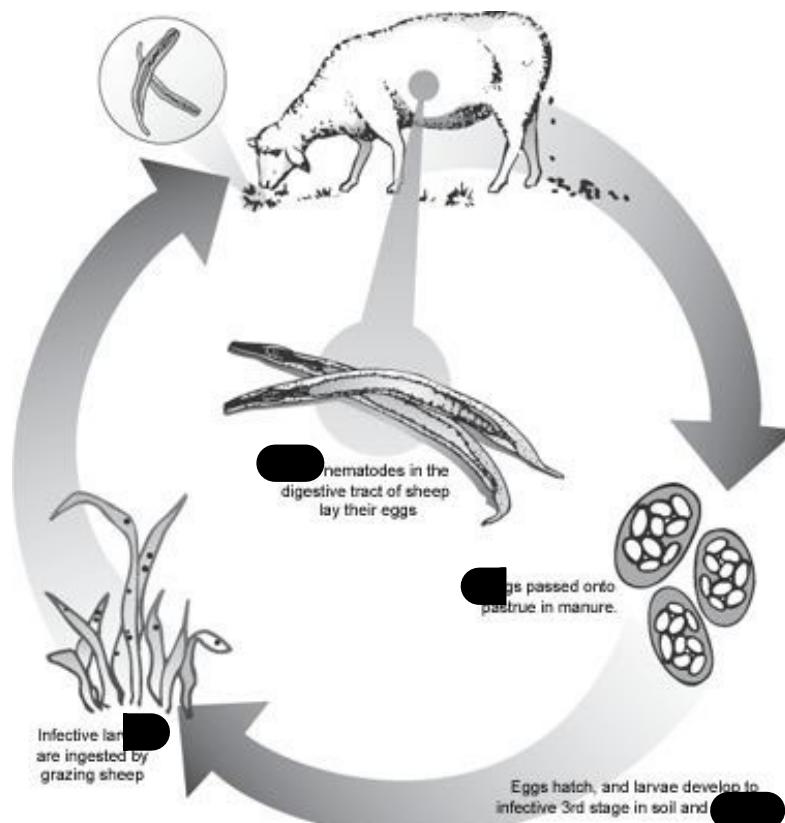
Nodular worms

Heartworms

3. What are the symptoms of internal parasite infestation in sheep?

Weight loss	Listlessness
Diarrhea	Fast breathing
Increased appetite	Weight gain
Depression	Bottle jaw
Hair growth	

4. Fill in the blanks of the internal parasites life cycle:



INTERMEDIATE LAMB INTERNAL/EXTERNAL PARASITES
ACTIVITY #3 Cont.

5. Circle the most common external parasites for sheep:

Lice (both biting and sucking lice)
Hookworms
Nose bot flies
Keds (or louse flies)

Mites
Fleas
Fly maggot larvae
Roundworms

INTERMEDIATE LAMB ANIMAL IDENTIFICATION ACTIVITY #4

(Please draw a line to match the correct method of animal identification to its advantages and disadvantages.)

A. Paint Branding



1. Advantages-Permanent and doesn't disfigure the animal
Disadvantages-Animal must be confined in order to read

B. Ear Tattooing



2. Advantages-Economical, can be read from a distance
Disadvantages-Tend to become brittle.

C. Ear Tagging (plastic)



3. Advantages-Durable
Disadvantages-Difficult to read at a distance

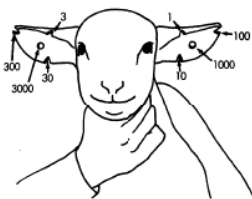
4. Advantages-Permanent, economical
Disadvantages-Detracts from appearance for show animals, not an approved official form of identification

D. Ear Tagging (metal)



5. Advantages-Easy to read
Disadvantages-Temporary, not an approved official form of identification

E. Ear Notches



INTERMEDIATE MARKET LAMB HEALTH

ACTIVITY # 5

Answer the questions below by circling the correct answer.

1. What can cause diseases?
 - a. Bacteria
 - b. Viruses
 - c. Fungi
 - d. Prions
 - e. Protozoas
 - f. Parasites
 - g. All of the above

2. Transmission occurs through direct or indirect contact. True or False

3. This type of contact happens when the diseased animal physically touches or is very close to another animal.
 - a. Indirect contact
 - b. Direct contact
 - c. Airborne contact
 - d. Water contact

4. This type of contact occurs when transmission is through a third party or mechanically.
 - a. Indirect contact
 - b. Direct contact
 - c. Vector-borne contact

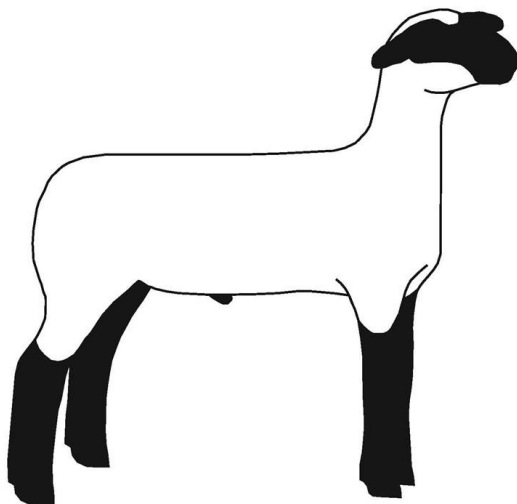
5. Health diseases may also occur from non-infectious causes. Some examples are:
 - a. Malnutrition
 - b. Trauma/Injury
 - c. Cancer
 - d. Genetic defects
 - e. Environmental Toxins
 - f. All of the above

INTERMEDIATE LAMB INJECTION SITE ACTIVITY #6

(Multiple Choice and Fill-in-the-Line)

1. What is meant by the term subcutaneous injection?
 - a. Under the skin
 - b. Deep in the muscle
 - c. In the nasal passages (nose)
2. What is meant by the term intramuscular (I.M.) injection?
 - a. Under the skin
 - b. Deep into the muscle
 - c. In the nasal passages (nose)
3. Where on an animal is the most preferred site to give an I.M. injection? _____
4. When administering an I.M. injection what amount should you never exceed?
 - a. 7 cc per injection site
 - b. 4 cc per injection site
 - c. 5 cc per injection site
5. Intra-nasal vaccines are administered where?
 - a. Under the skin
 - b. Deep in the muscle
 - c. In the nasal passages (nose)

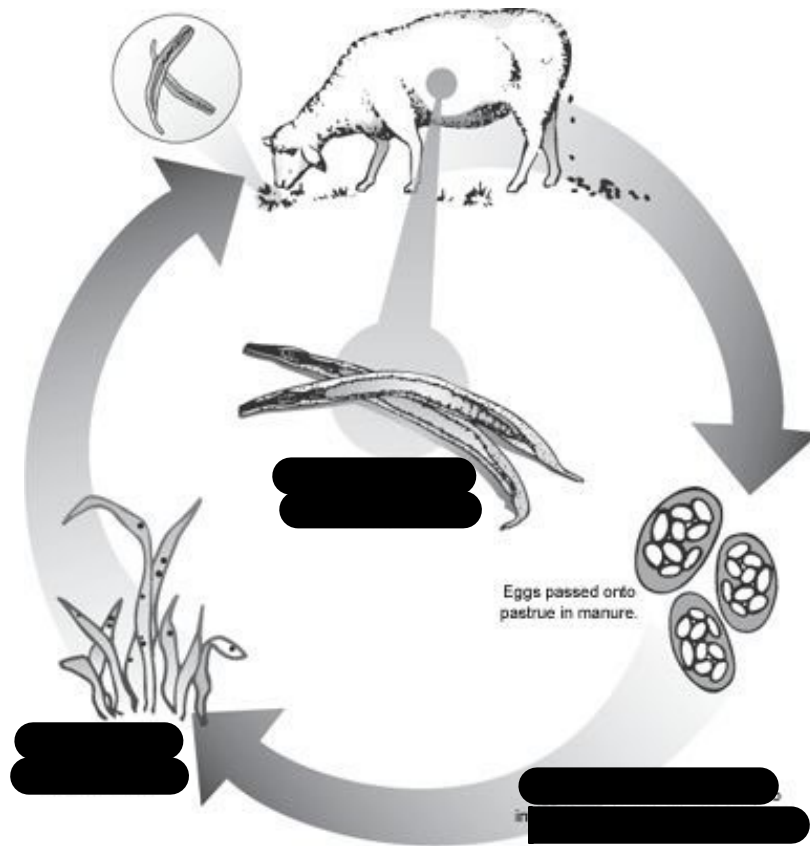
(Draw circles on the lamb to select the appropriate injection site locations for a subcutaneous injection.)



SENIOR LAMB INTERNAL AND EXTERNAL PARASITES

ACTIVITY #1

1. What are the common internal parasites for sheep?
2. What are the symptoms of internal parasite infestation in sheep?
3. Fill in the blanks of the internal parasites life cycle:



4. What are the most common external parasites for sheep?

SENIOR LAMB INTERNAL AND EXTERNAL PARASITES
ACTIVITY #1 Cont.

5. Match the species of sucking lice to their description:

- | | |
|--|---|
| <p>1) African blue louse</p> <p>2) Foot louse</p> <p>3) The face and body louse and the long-nosed cattle louse</p> <p>4) Goat-sucking louse</p> | <p>a) This louse prefers the feet and legs of goats and sheep. Populations peak in the spring, and at that time the lice may affect the belly area as well. Scrotum infestations on bucks are common. Lambs seem to have the highest infestations. Egg hatch for this species of louse takes longer than the other species. Therefore, retreatment should be applied after 3 weeks for most insecticides.</p> <p>b) Found in semi-tropical climates in the United States, India, and Puerto Rico. They are found on the body, head, and neck. Heavy populations have caused the death of the host.</p> <p>c) These are minor pests.</p> <p>d) Populations are dispersed over the animal's body. These lice are also found on sheep.</p> |
|--|---|

SENIOR LAMB ANIMAL IDENTIFICATION ACTIVITY #2

Please write in the advantages and disadvantages for each method listed below.

A. Paint Branding

Advantages:

Disadvantages:

B. Tattooing

Advantages:

Disadvantages:

C. Ear Tagging (Plastic)

Advantages:

Disadvantages:

D. Ear Tagging (Metal)

Advantages:

Disadvantages:

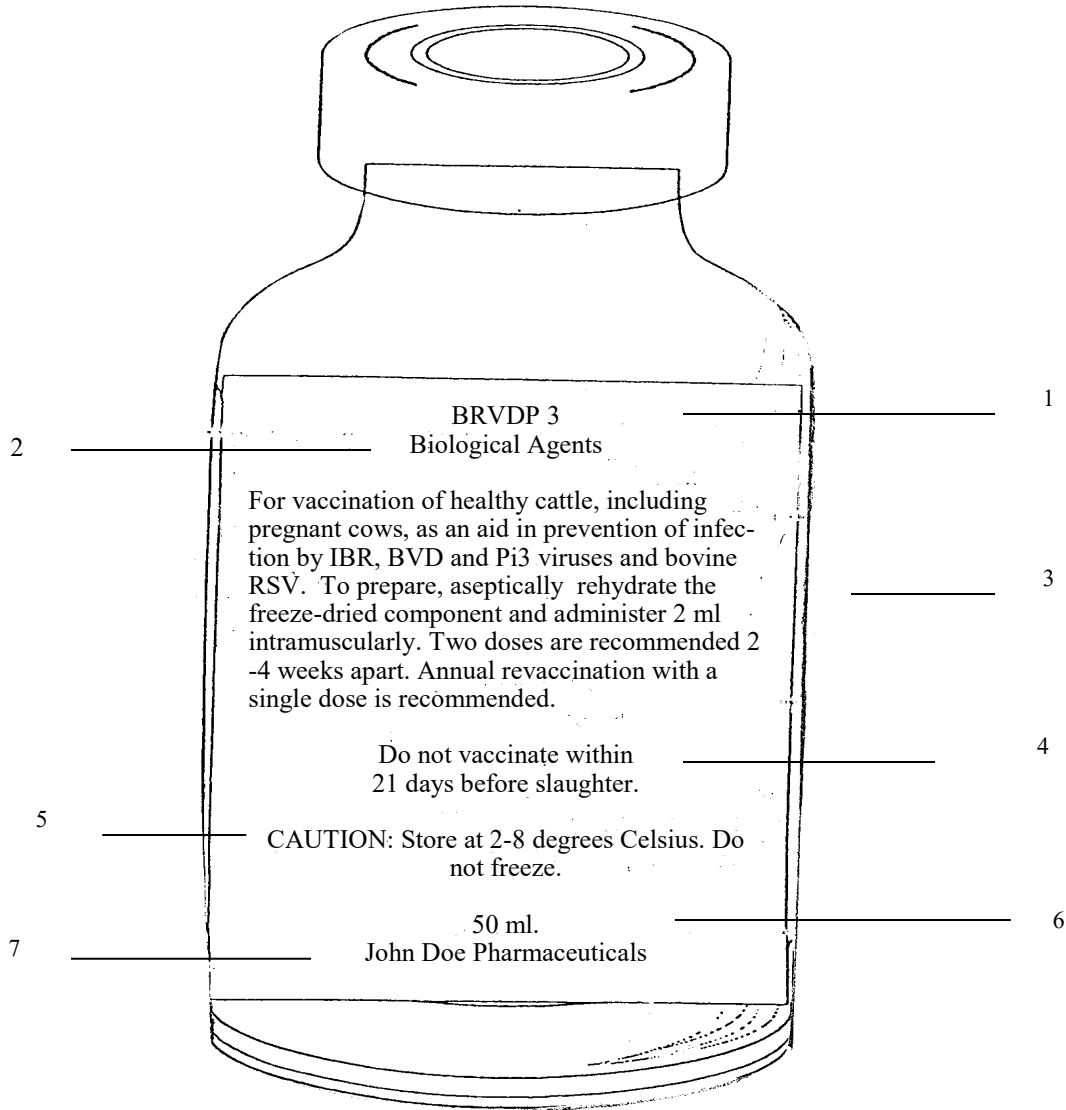
E. Ear Notching

Advantages:

Disadvantages:

SENIOR LAMB MEDICATION LABEL ACTIVITY #3

Identify all of the important parts of the medication label and describe what they tell us about the medicine.



Parts

- _____ Withholding Times/Cautions and Warnings
- _____ Distributor Name
- _____ Directions
- _____ Amount of Contents
- _____ Name of Medication
- _____ Storage
- _____ Active Ingredients

Descriptions

- _____ Tells how much is in the container. Usually in metric units, (i.e.) ml. or milliliters
- _____ Tells how hot or cold to keep the medications or whether or not to expose to light.
- _____ Tells the time it takes for the drug/chemical to be used up by the animal's body after it has been administered (or the time it takes a drug/chemical to wear off)
- _____ Chemical name(s) of what is in the drug

SENIOR MEDICATION INSERT

Activity #4

Use this image to answer the questions below.

Medication Insert

OMNIBIOTIC is an effective antimicrobial preparation containing hydrocillin hydrochloride. Each ml of this suspension contains 200,000 units of hydrocillin hydrochloride in an aqueous base.

Indications: Cattle – bronchitis, foot rot, leptospirosis, mastitis, metritis, pneumonia, wound infections. **Swine** – erysipelas, pneumonia. **Sheep** – foot rot, pneumonia, mastitis and other infections in these species caused by or associated with hydrocillin-susceptible organisms.

Recommended Daily Dosage
The usual dose is 2 ml per 100 lb of body weight given once daily.
Maximum dose is 15 ml/day.

Body Weight	Dosage
100 lb	2 ml
300 lb	6 ml
500 lb	10 ml
750 lb or more	15 ml

Continue treatment for 1 to 2 days after symptoms disappear.

Caution: 1. Omnibiotic should be injected deep within the fleshy muscle of the neck. Do not inject this material into the hip or rump, subcutaneously, into a blood vessel, or near a major nerve because it may cause tissue damage. 2. If improvement does not occur within 48 hours, the diagnosis should be reconsidered and appropriate treatment initiated. 3. Treated animals should be closely observed for at least 30 minutes. Should a reaction occur, discontinue treatment and immediately administer epinephrine and antihistamines. 4. Omnibiotic must be stored between 2° and 8°C (36° to 46°F). Warm to room temperature and shake well before using. Keep refrigerated when not in use.

Warning: Milk that has been taken from animals during treatment and for 48 hours after the last treatment must not be used for food. The use of this drug must be discontinued for 30 days before treated animals are slaughtered for food.

How Supplied: Omnibiotic is available in vials of 100 ml.

OMNIBIOTIC

(Hydrocillin in Aqueous Suspension)

Name of Drug

Active Ingredient(s)

Species and Animal Class

For use in Beef Cattle, Lactating and Non-Lactating Dairy Cattle, Swine and Sheep

Read Entire Brochure Carefully Before Using This Product

For Intramuscular Use Only

Active Ingredient(s): Omnibiotic is an effective antimicrobial preparation containing hydrocillin hydrochloride. Each ml of this suspension contains 200,000 units of hydrocillin hydrochloride in an aqueous base.

Indications: Cattle – bronchitis, foot rot, leptospirosis, mastitis, metritis, pneumonia, wound infections. **Swine** – erysipelas, pneumonia. **Sheep** – foot rot, pneumonia, mastitis and other infections in these species caused by or associated with hydrocillin-susceptible organisms.

Recommended Daily Dosage
The usual dose is 2 ml per 100 lb of body weight given once daily.
Maximum dose is 15 ml/day.

Body Weight	Dosage
100 lb	2 ml
300 lb	6 ml
500 lb	10 ml
750 lb or more	15 ml

Continue treatment for 1 to 2 days after symptoms disappear.

Caution: 1. Omnibiotic should be injected deep within the fleshy muscle of the neck. Do not inject this material into the hip or rump, subcutaneously, into a blood vessel, or near a major nerve because it may cause tissue damage. 2. If improvement does not occur within 48 hours, the diagnosis should be reconsidered and appropriate treatment initiated. 3. Treated animals should be closely observed for at least 30 minutes. Should a reaction occur, discontinue treatment and immediately administer epinephrine and antihistamines. 4. Omnibiotic must be stored between 2° and 8°C (36° to 46°F). Warm to room temperature and shake well before using. Keep refrigerated when not in use.

Warning: Milk that has been taken from animals during treatment and for 48 hours after the last treatment must not be used for food. The use of this drug must be discontinued for 30 days before treated animals are slaughtered for food.

How Supplied: Omnibiotic is available in vials of 100 ml.

Approved Uses

Route of Administration

Storage Requirements

Withholding Time

Cautions and Warnings

Route of Administration

Storage Requirements

Withholding Time

Cautions and Warnings

Route of Administration

Storage Requirements

Withholding Time

Cautions and Warnings

Route of Administration

Storage Requirements

Withholding Time

Cautions and Warnings

Route of Administration

Storage Requirements

Withholding Time

Cautions and Warnings

Route of Administration

Storage Requirements

Withholding Time

Cautions and Warnings

Route of Administration

Storage Requirements

Withholding Time

Cautions and Warnings

Route of Administration

Storage Requirements

Withholding Time

Cautions and Warnings

Route of Administration

Storage Requirements

Withholding Time

Cautions and Warnings

Route of Administration

Storage Requirements

Withholding Time

Cautions and Warnings

Route of Administration

Storage Requirements

Withholding Time

Cautions and Warnings

Route of Administration

Storage Requirements

Withholding Time

Cautions and Warnings

Route of Administration

Storage Requirements

Withholding Time

Cautions and Warnings

Route of Administration

Storage Requirements

Withholding Time

Cautions and Warnings

Route of Administration

Storage Requirements

Withholding Time

Cautions and Warnings

Route of Administration

Storage Requirements

Withholding Time

Cautions and Warnings

Route of Administration

Storage Requirements

Withholding Time

Cautions and Warnings

Route of Administration

Storage Requirements

Withholding Time

Cautions and Warnings

Route of Administration

Storage Requirements

Withholding Time

Cautions and Warnings

Route of Administration

Storage Requirements

Withholding Time

Cautions and Warnings

Route of Administration

Storage Requirements

Withholding Time

Cautions and Warnings

Route of Administration

Storage Requirements

Withholding Time

Cautions and Warnings

Route of Administration

Storage Requirements

Withholding Time

Cautions and Warnings

Route of Administration

Storage Requirements

Withholding Time

Cautions and Warnings

Route of Administration

Storage Requirements

Withholding Time

Cautions and Warnings

Route of Administration

Storage Requirements

Withholding Time

Cautions and Warnings

Route of Administration

Storage Requirements

Withholding Time

Cautions and Warnings

Route of Administration

Storage Requirements

Withholding Time

Cautions and Warnings

Route of Administration

Storage Requirements

Withholding Time

Cautions and Warnings

Route of Administration

Storage Requirements

Withholding Time

Cautions and Warnings

Route of Administration

Storage Requirements

Withholding Time

Cautions and Warnings

Route of Administration

Storage Requirements

Withholding Time

Cautions and Warnings

Route of Administration

Storage Requirements

Withholding Time

Cautions and Warnings

Route of Administration

Storage Requirements

Withholding Time

Cautions and Warnings

Route of Administration

Storage Requirements

Withholding Time

Cautions and Warnings

Route of Administration

Storage Requirements

Withholding Time

Cautions and Warnings

Route of Administration

Storage Requirements

Withholding Time

Cautions and Warnings

Route of Administration

Storage Requirements

Withholding Time

Cautions and Warnings

Route of Administration

Storage Requirements

Withholding Time

Cautions and Warnings

Route of Administration

Storage Requirements

Withholding Time

Cautions and Warnings

Route of Administration

Storage Requirements

Withholding Time

Cautions and Warnings

Route of Administration

Storage Requirements

Withholding Time

Cautions and Warnings

Route of Administration

Storage Requirements

Withholding Time

Cautions and Warnings

Route of Administration

Storage Requirements

Withholding Time

Cautions and Warnings

Route of Administration

Storage Requirements

Withholding Time

Cautions and Warnings

Route of Administration

Storage Requirements

Withholding Time

Cautions and Warnings

Route of Administration

Storage Requirements

Withholding Time

Cautions and Warnings

Route of Administration

Storage Requirements

Withholding Time

Cautions and Warnings

Route of Administration

Storage Requirements

Withholding Time

Cautions and Warnings

Route of Administration

Storage Requirements

Withholding Time

Cautions and Warnings

Route of Administration

Storage Requirements

Withholding Time

Cautions and Warnings

Route of Administration

Storage Requirements

Withholding Time

Cautions and Warnings

Route of Administration

Storage Requirements

Withholding Time

Cautions and Warnings

Route of Administration

Storage Requirements

Withholding Time

Cautions and Warnings

Route of Administration

Storage Requirements

Withholding Time

Cautions and Warnings

Route of Administration

Storage Requirements

Withholding Time

Cautions and Warnings

Route of Administration

Storage Requirements

Withholding Time

Cautions and Warnings

Route of Administration

Storage Requirements

Withholding Time

Cautions and Warnings

Route of Administration

Storage Requirements

Withholding Time

Cautions and Warnings

Route of Administration

Storage Requirements

Withholding Time

Cautions and Warnings

Route of Administration

Storage Requirements

Withholding Time

Cautions and Warnings

Route of Administration

Storage Requirements

Withholding Time

Cautions and Warnings

Route of Administration

Storage Requirements

Withholding Time

Cautions and Warnings

Route of Administration

Storage Requirements

Withholding Time

Cautions and Warnings

Route of Administration

Storage Requirements

Withholding Time

Cautions and Warnings

Route of Administration

Storage Requirements

Withholding Time

Cautions and Warnings

Route of Administration

Storage Requirements

Withholding Time

Cautions and Warnings

Route of Administration

Storage Requirements

Withholding Time

Cautions and Warnings

Route of Administration

Storage Requirements

Withholding Time

Cautions and Warnings

Route of Administration

Storage Requirements

Withholding Time

Cautions and Warnings

Route of Administration

Storage Requirements

Withholding Time

Cautions and Warnings

Route of Administration

Storage Requirements

Withholding Time

Cautions and Warnings

Route of Administration

Storage Requirements

Withholding Time

Cautions and Warnings

SENIOR MEDICATION INSERT
Activity #4 Cont.

1. What is the name of the drug? _____
2. For what uses is this product approved? _____
3. What is the expiration date? _____
4. What are the active ingredients? _____
5. Where should this medication be injected? _____
6. What is the withdraw period for this medication? _____
7. If you have a 100-pound lamb what would the dosage be? _____
8. If you have 100-pound lamb how many doses are there be in a vial?

9. What temperature should this medication be kept at? _____
10. What kind of environment should this medication be kept in? _____
11. How long after injection should the animal be monitored? _____
12. What medication can be administered if a reaction is observed?

INJECTION SITE SENIOR LAMB ACTIVITY #5

(Multiple Choice and Fill-in-the-Line)

1. What is meant by the term subcutaneous injection?
 - a. Under the skin
 - b. Deep in the muscle
 - c. In the nasal passages (nose)

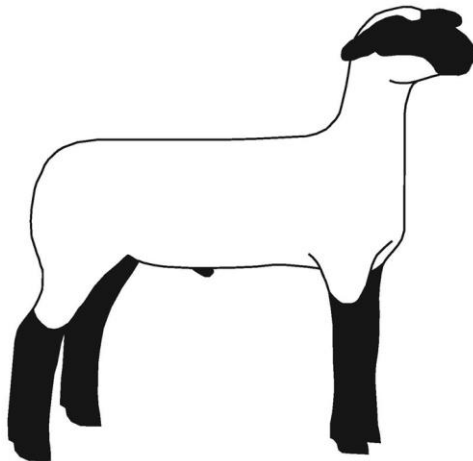
 2. What is meant by the term intramuscular (I.M.) injection?
 - a. Under the skin
 - b. Deep into the muscle
 - c. In the nasal passages (nose)

 3. Where on an animal is the most preferred site to give an I.M. injection? _____

 4. When administering an I.M. injection what amount should you never exceed?
 - a. 7 cc per injection site
 - b. 4 cc per injection site
 - c. 5 cc per injection site

 5. Intra-nasal vaccines are administered where?
 - a. Under the skin
 - b. Deep in the muscle
 - c. In the nasal passages (nose)

 6. Draw circles on the lamb to select the appropriate injection site locations for a subcutaneous injection. Draw an **X** on the lamb where you should never give injections and state why?
-
-



SENIOR LAMB DISEASES ACTIVITY #6

Write in the Name and Common Name that corresponds with the cause, major symptoms and prevention of the

Name:	
Common Name:	
Cause:	Virus
Major Symptoms:	With an infection of contagious ecthyma, goat will show signs of formation of vesicles, pustules and thick scabs on the lips, nostrils, face, eyelids, teats, udder, feet and occasionally inside the mouth
Prevention:	Vaccination of the whole flock, the disease must run its whole course, so vaccination should happen before an out break

Name:	
Common Name:	
Cause:	Bacteria
Major Symptoms:	Periodic muscular tremors and convulsion foaming at the mouth, grinding of the teeth, and oscillations of the eyes are all signs of Enterotoxemia.
Prevention:	Death usually occurs within two hours of signs. Properly timed and well balanced rations along with vaccinations and booster will help with any outbreaks. Likewise gradual transition between roughage feed to a highly concentrated ration, about 2 to 3 weeks.

Name:	
Common Name:	XXXXXX
Cause:	Prion like Factor
Major Symptoms:	Sheep infected with Scrapie will show signs of, weight loss without a loss in appetite, itching, biting at the legs, motor abnormalities, bunny hopping in rear legs, increased sensitivity to noise and sudden movements, tremors, wool pulling, lip smacking, high stepping with front legs, blindness, and swaying of back end.
Prevention:	Flock certification and testing, and not moving high risk or infected animals are two forms of prevention.

Name:	
Common Name:	
Cause:	Virus
Major Symptoms:	Weight loss, labored breathing, paralysis, swollen joints, and hard unproductive udders are some signs that may appear with an infection.
Prevention:	To test for the infection a lamb must be bleed and have their blood examined. All positive cases need to be culled from the flock. Continue testing every 6 and 12 months culling all positive sheep till all test negative. Once a flock has tested negative 3 consecutive times then it is determined to be pneumonia free. Another method would be to remove all lambs from infected ewes before any contact, nursing or licking, has occurred and raise them artificially, to start a new pneumonia free flock.

Name:	
Common Name:	
Cause:	Bacteria
Major Symptoms:	Sheep infected with E. Coli Scours will show signs of diarrhea, dehydration, depression, going off their feed, a decrease in gut mobility resulting in a painful slightly bloated appearance to the abdomen, they will salivate from the mouth, and the mouth will be cool to the touch
Prevention:	Good sanitation is the most important prevention tool for this disease. Re-hydrating the lamb, giving antibiotics prescribed by a vet, and making sure adequate amounts of colostrum are obtained in the lamb, are measures that should be taken when symptoms are observed.

Name:	
Common Name:	
Cause:	Fungus
Major Symptoms:	Presence of thick scaly, usually round-appearing, pustules on the skin, typically found on the ears and face, but can be found all over the body.
Prevention:	Use rubber surgical gloves when handling infected sheep, avoid nicking or cutting sheep while shearing. Keeping the sheep's area sanitary, as well as the sheep. If an outbreak occurs quarantine the infected sheep to control any further spreading.